



CLIMATOLOGICAL DATA

MARYLAND AND DELAWARE



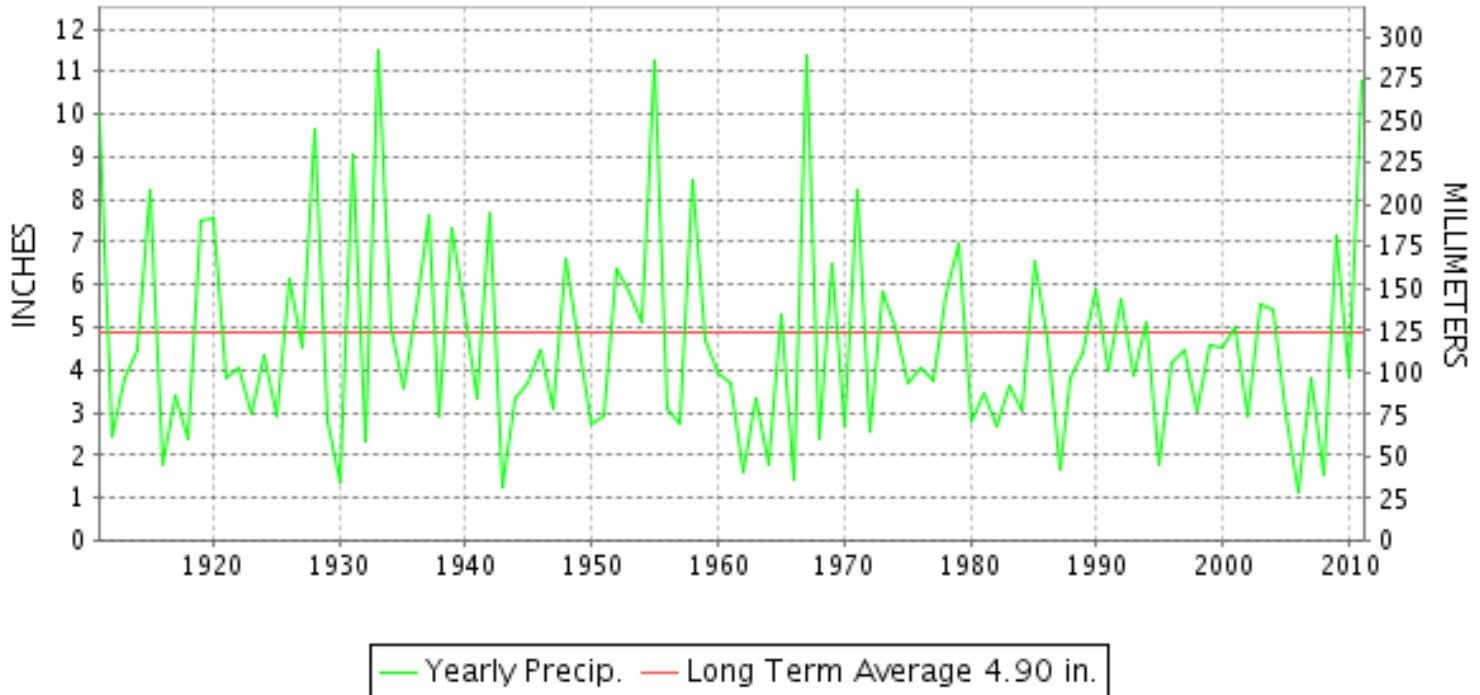
AUGUST 2011

VOLUME 115 NUMBER 08

ISSN 0145-0549

GHCND Ver: 2.91-upd-2012021008

AUGUST PRECIPITATION BY YEAR



TEMPERATURE AND PRECIPITATION EXTREMES

MARYLAND

HIGHEST TEMPERATURE	101	AUGUST 01	MD SCI CTR BALTIMORE
LOWEST TEMPERATURE	46	AUGUST 30+	OAKLAND 1 SE
GREATEST TOTAL PRECIPITATION	12.55		MECHANICSVILLE 5 NE
LEAST TOTAL PRECIPITATION	3.26		SAVAGE RIVER DAM
GREATEST 1 DAY PRECIPITATION	8.73	AUGUST 28	PRINCESS ANNE

"I certify that this is an official publication of the National Oceanic and Atmospheric Administration (NOAA) It is compiled using information from weather observing sites supervised by NOAA/National Weather Service and received at the National Climatic Data Center(NCDC), Asheville, North Carolina 28801."

Director
National Climatic Data Center

noaa

National
Oceanic and
Atmospheric Administration

National
Environmental Satellite, Data
and Information Service

National
Climatic Data Center
Asheville, North Carolina

DELAWARE

HIGHEST TEMPERATURE	97	AUGUST 01	WILMINGTON NEW CASTLE
LOWEST TEMPERATURE	54	AUGUST 30+	BEAR 2 SW
GREATEST TOTAL PRECIPITATION	15.02		BEAR 2 SW
LEAST TOTAL PRECIPITATION	14.70		WILMINGTON NEW CASTLE
GREATEST 1 DAY PRECIPITATION	5.38	AUGUST 27	WILMINGTON NEW CASTLE

MONTHLY STATION AND DIVISION SUMMARY

STATION	TEMPERATURE (°F)											PRECIPITATION (IN)												
	AVERAGE MAXIMUM	AVERAGE MINIMUM	AVERAGE	DEPARTURE FROM NORMAL	HIGHEST	DATE	LOWEST	DATE	HEATING DEG. DAYS	COOLING DEG. DAYS	NO. OF DAYS				TOTAL	DEPARTURE FROM NORMAL	GREATEST 24 HOURS	DATE	ICE PELLETS, SNOW			NO OF DAYS		
											MAX		MIN						TOTAL	MAX DEPTH ON GROUND	DATE	10 OR MORE	50 OR MORE	1 00 OR MORE
											>=90	<=32	<=32	<=0										
EMMITSBURG 2 SE	83.3	61.8	72.6	-0.7	95	02	51	31+	2	242	3	0	0	0	4.30	0.70	1.51	28	0.0	0		8	2	2
FREDERICK 2 NNE	86.9	64.5	75.7		98	02	53	31+	0	337	9	0	0	0	3.72		1.16	28	0.0	0		9	2	1
MILLERS 4 NE	83.3	63.0	73.2	0.7	94	01	50	30	0	259	2	0	0	0	9.86	6.15	4.12	28	0.0	0		12	6	3
SMITHSBURG 2NW	83.7	60.4	72.1		95	02	48	23	3	227	3	0	0	0	7.19		1.80	16	0.0	0		11	6	2
WESTMINSTER	84.7	63.6	74.2	0.2	95	02	53	31+	1	290	4	0	0	0	4.99	1.35	2.53	28	0.0	0		10	2	1
--DIVISIONAL DATA-----> APPALACHIAN MOUNTAIN 07			73.6	0.1											6.99	3.15								
CUMBERLAND 2	87.6M	61.6M	74.6M		97	03	51	31+	0	281	6	0	0	0	M 3.51		1.39	15	0.0	0		7	1	1
FROSTBURG 2	79.3	58.2	68.8	1.6	89	05	49	23	17	139	0	0	0	0	M 4.10		1.72	20	N 0.0	0		9	1	1
SHARPSBURG 5 S	86.0	60.7	73.4		96	02	49	24+	1	269	5	0	0	0	4.03		1.84	15	0.0	0		6	2	1
WILLIAMSPORT	85.6M	62.5M	74.1M		96	03+	52	24	0	277	5	0	0	0	M 3.87		0.80	28	N 0.0	0		9	2	0
--DIVISIONAL DATA-----> ALLEGHENY PLATEAU 08			72.7	1.5											3.88	0.43								
OAKLAND 1 SE	79.1	56.8	68.0	0.9	86	01	46	30+	24	125	0	0	0	0	4.00	-0.15	0.94	26	0.0	0		11	3	0
SAVAGE RIVER DAM	80.1	59.5	69.8	1.5	90	01	50	31+	13	169	1	0	0	0	3.26	-0.11	0.70	20	0.0	0		9	3	0
--DIVISIONAL DATA-----> DELAWARE NORTHERN 01			68.9	1.8											3.63	-0.28								
BEAR 2 SW	83.5	64.4	74.0		93	01	54	30+	0	282	2	0	0	0	15.02		5.12	14	0.0	0		9	6	4
WILMINGTON NEW CASTLE	84.1M	66.2M	75.2M		97	01	56	23	0	314	4	0	0	0	14.70	11.19	5.38	27	N 0.0	0		11	7	5
WILMINGTON PORTER RES	82.4	66.4	74.4		94	01	60	30+	0	298	2	0	0	0	14.75		3.98	27	0.0	0		12	6	5
--DIVISIONAL DATA-----> SOUTHERN 02			74.5	0.0											14.82	11.10								
DOVER	85.7	66.7	76.2	0.0	93	02	58	31+	0	355	6	0	0	0	F 8.63		4.62	15	0.0	0		6	3	2
LEWES	M	M	M												M				N 0.0	0				
--DIVISIONAL DATA----->			76.2	1.4											8.63	3.74								

DAILY PRECIPITATION (INCHES)

STATION	TOTAL	DAY OF MONTH																															
		01	02	03	04	05	06	07	08	09	10	11	12	13	14	15	16	17	18	19	20	21	22	23	24	25	26	27	28	29	30	31	
MARYLAND																																	
SOUTHERN																																	
EASTERN SHORE 01																																	
ASSATEAGUE	9.67	0.72	0.01	0.15	0.01			1.03						0.01	0.03							0.34				0.01	0.04	6.72	0.60				
PRINCESS ANNE	M 10.42			0.05			-	0.17						-	1.04						-	0.21					0.22	-	8.73				
SALISBURY 2N	M	-	-	-	-	-	-	-	-	-	-	-	-	-	-	-	-	-	-	-	-	-	-	-	-	-	-	-	-	-	-	-	-
SALISBURY FAA AP	11.75	0.56		0.20	T			0.18					0.73	2.66	0.12					0.94	0.02	0.18				0.02	0.06	5.58	0.50				
SNOW HILL 4 N	11.52		1.02	0.30	0.22				0.09				0.35	0.82	0.20	0.02				T			0.30				0.20	4.50	3.50				
CENTRAL																																	
EASTERN SHORE 02																																	
FEDERALSBURG R	M	-	-	-	-	-	-	-	-	-	-	-	-	-	-	-	-	-	-	-	-	-	-	-	-	-	-	-	-	-	-	-	-
ROYAL OAK 2 SSW	M	-	-	-	-	-	-	-	-	-	-	-	-	-	-	-	-	-	-	-	-	-	-	-	-	-	-	-	-	-	-	-	-
LOWER SOUTHERN 03																																	
MECHANICSVILLE 5 NE	12.55		T		0.02	T		0.02	0.48		0.08			0.51	1.62	0.33	0.04				0.03		T				0.75	T	8.67	T			
SOLOMONS	FM 11.16				0.19	0.01			0.38					0.17	0.48	0.38					-	0.01 ^L	0.02				1.78	0.94	6.81				
UPPER SOUTHERN 04																																	
BALTIMORE WASH INTL AP	10.38	T		0.43	0.01		0.36	0.02		0.04			0.82	0.65	0.17	0.08			1.72	0.01		0.99	T			0.38	0.01	3.59	1.10				
BELTSVILLE	12.45		0.67		0.06			0.88	0.17					0.51	2.91	T					0.39			1.78			0.53	T	4.47	0.08			
DALECARLIA RSVR	7.49				0.33			0.65	0.07		0.09			0.39	0.85						0.43	0.29		0.71			0.53		3.05	0.10			
LAUREL 3 W	11.43	0.40		0.04	0.17		1.00	0.25					0.41	0.84	1.38				0.78	0.02		1.05			0.57		2.60	1.92					
MD SCI CTR BALTIMORE R	11.97	0.62	0.09	0.48	0.03	0.36	0.10	0.02		0.01			1.40	1.34	0.93		0.75			0.09	0.09		1.83		0.31		2.62	1.01					
NATL ARBORETUM DC	8.76		0.02		0.12			0.20	0.02					0.55	1.22	0.05					0.11	0.37		1.14			0.41	0.02	4.43	0.10			
OXON HILL	9.86		T	T	0.21			0.28	1.22		0.06			0.87	0.96	0.02					0.06	0.44		0.26			0.27	T	5.08	0.13			
UPPER MARLBORO 3 NNW	M 12.62		0.17		0.19	0.01		-	0.50		0.01			-	2.22	0.28	0.06				0.05	2.10		1.19			0.39		5.27	0.18			
NORTHERN																																	
EASTERN SHORE 05																																	
CHESTERTOWN	M	-	-	-	-	-	-	-	-	-	-	-	-	-	-	-	-	-	-	-	-	-	-	-	-	-	-	-	-	-	-	-	-
NORTHERN CENTRAL 06																																	
ABERDEEN PHILLIPS FLD	FM 5.45		0.69	0.33	0.12	T		-	0.22 ^L		0.24			-	4.09 ^L	1.23			0.15	0.08				1.33			1.28	-	4.65 ^L				
BRIGHTON DAM	10.15	0.85		0.40	0.10		0.02	0.28		0.20			0.50	0.30	0.40						0.05		2.60			0.15		0.75	3.55				
CATOCTIN MTN PARK	4.47			0.20	0.14		0.12	0.01		0.59			0.04	0.19	1.13						0.13	0.01		0.09		0.47	0.10	1.25					
CONOWINGO DAM	11.69		0.04		0.12			0.37	1.80		0.33			1.05	1.83	0.07				0.13	0.32			0.22			0.47	4.80	0.14				
CYLBURN	M	-	-	-	0.74 ^L			-	-	0.96 ^L	0.07			-	-	-	6.56 ^L				0.16	T		-	1.16 ^L			-	-	-	-	-	-
DAMASCUS 3 SSW	8.04	T		0.14		0.08	1.49			0.37			0.17	2.15	0.64				0.08	0.32	T	0.15			0.14		0.71	1.60					
EMMITSBURG 2 SE	4.30		0.08	0.06	0.11		0.09	0.04		0.40				0.11	1.19	0.04					0.10	0.01		0.44				1.51	0.12				
FREDERICK 2 NNE	3.72		0.03		0.27		0.07	0.43		0.13				0.28	0.45	0.14					0.55	0.04					0.12		1.16	0.05			
MILLERS 4 NE	9.86		0.10	0.04	0.24		0.03	0.39		0.53			1.46	0.53	0.19					0.02	1.11		0.03	0.64		0.11	0.02	0.30	4.12				
SMITHSBURG 2NW	7.19				0.70			0.27			0.72			0.20	0.30	1.80					1.25	0.10					0.67		0.90	0.28			
WESTMINSTER	4.99				0.18			0.26	0.06	0.03	0.15			0.25	0.70						0.11			0.27			0.35		2.53	0.10			
APPALACHIAN																																	
MOUNTAIN 07																																	
CUMBERLAND 2	M 3.51	-	-	0.03	0.02		0.03	0.40	0.02	0.04	0.06			0.36	1.39	0.16			0.08			0.18		0.02			0.25		0.47				

DAILY PRECIPITATION (INCHES)

STATION	TOTAL	DAY OF MONTH																															
		01	02	03	04	05	06	07	08	09	10	11	12	13	14	15	16	17	18	19	20	21	22	23	24	25	26	27	28	29	30	31	
FROSTBURG 2	M 4.10		0.03	0.04	0.12		0.03	0.47	0.10	0.04	0.24	T			0.02	0.38	0.15			-	1.72		0.04				0.34		0.38				
SHARPSBURG 5 S	4.03			0.02	0.30			0.03	0.04		0.05				0.06	1.84	0.37			0.06		0.02					0.10		0.90	0.24			
WILLIAMSPORT	M 3.87				0.38			0.20	-		0.40				0.05	0.41	0.03			0.67	0.22			0.02			0.40		0.80	0.29			
ALLEGHENY PLATEAU 08																																	
OAKLAND 1 SE	4.00			0.25		0.17	0.05	0.90	0.10	0.10	0.21				0.20	0.16	0.05					0.65		0.22			0.94						
SAVAGE RIVER DAM R	3.26		T	T	0.18	T	T	0.56	0.13	T	0.38				0.06	0.24	T					0.70		0.25			0.66		0.10				
DELAWARE																																	
NORTHERN 01																																	
BEAR 2 SW	15.02			0.03	0.04		0.02	0.01		0.72				1.20	5.12	0.33			0.02	0.48		0.32				0.50	T	4.37	1.86				
NEWARK UNIV FARM R	M	-	-	-	-	-	-	-	-	-	-	-	-	-	-	-	-	-	-	-	-	-	-	-	-	-	-	-	-	-	-	-	-
WILMINGTON NEW CASTLE R	14.70			0.17	0.08		T	T		1.55				0.37	2.80	0.30	T		0.59	1.10		0.10				0.70		5.38	1.56				
WILMINGTON PORTER RES	14.75	T		0.20	0.13		0.09	T		2.45				0.15	2.54	0.35			0.47	1.94		0.33				0.60		3.98	1.52				
SOUTHERN 02																																	
DOVER	F 8.63	0.21		0.46	0.03			0.06								4.62	0.06			0.78		2.18	0.23			0.00 ^L	0.00 ^L	0.00 ^L	9.06 ^L				
LEWES	M	0.00 ^L	0.01 ^L	0.06	0.01			0.04			0.90			-	-	0.80	-	-	-	-	-	-	-	-	-	-	-	-	-	-	-	-	-

DAILY TEMPERATURES (°F)

STATION	OB. TIME	MAX/MIN	DAY OF MONTH																															AVERAGE
			01	02	03	04	05	06	07	08	09	10	11	12	13	14	15	16	17	18	19	20	21	22	23	24	25	26	27	28	29	30	31	
NORTHERN CENTRAL 06		MIN																																M
ABERDEEN PHILLIPS FLD	07	MAX	97	94	93	81	77	86	91	92	88	87	87	84	87	80	79	80	85	87	88	88	86	88	80	80	84	79	86	79	83	79	83	85.1
		MIN	71	68	69	72	66	66	73	74	71	67	68	65	60	64	72	66	64	64	65	63	64	70	59	59	61	68	68	70	60	60	58	66.0
CATOCTIN MTN PARK	17	MAX	91	90	85	80	83	79	86	83	82	80	78	82	76	80	75	78	86	82	82	85	84	78	77	79	80	84	76	76	72	80	80	80.9
		MIN	64	66	69	68	62	68	72	70	64	67	58	52	62	67	63	62	59	60	60	59	68	61	50	56	67	62	68	64	54	51	55	62.2
CONOWINGO DAM	07	MAX	97	99	95	82	82	86	89	91	92	89	89	85	86	82	78	83	85	89	86	89	87	85	84	81	85	79	88	79	84	79	84	86.1
		MIN	69	68	69	70	63	64	69	70	68	64	64	58	59	59	69	63	62	65	65	61	62	65	55	55	58	65	66	69	58	57	55	63.4
CYLBURN	08	MAX	90	91	85	80	75	81	84	85	83	84	82	79	79	78	76	74	77	84	84	82	83	78	74	75	80	82	83	73	78	72	77	80.3
		MIN	70	68	70	71	65	66	72	74	69	68	63	62	61	63	67	65	64	65	64	63	64	65	56	57	59	65	72	67	60	55	56	64.7
DAMASCUS 3 SSW	22	MAX	94	92	79	87	88	87	87	87	87	85	82	83	80	82	78	81	86	87	83	83	85	78	78	81	78	78	74	80	74	80	80	82.7
		MIN	69	70	70	68	64	73	74	71	67	69	61	59	65	65	65	65	63	68	63	62	71	62	53	58	70	65	70	66	61	54	56	65.1
EMMITSBURG 2 SE	07	MAX	92	95	93	77	82	85	82	89	89	85	85	82	83	81	81	77	83	85	85	84	85	86	78	78	83	81	86	79	79	74	79	83.3
		MIN	65	65	70	70	65	64	72	73	64	67	64	54	55	61	65	65	61	61	63	60	60	64	51	51	52	63	63	68	57	52	51	61.8
FREDERICK 2 NNE	07	MAX	96	98	96	80	87	88	87	91	91	89	89	85	87	84	86	80	87	90	91	89	90	87	81	83	85	85	91	80	83	76	83	86.9
		MIN	68	70	72	72	67	68	73	75	69	70	64	59	59	62	66	67	63	63	64	61	62	70	54	55	57	66	66	70	61	53	53	64.5
MILLERS 4 NE	18	MAX	94	91	88	80	84	82	89	88	86	84	83	82	80	81	79	82	86	87	84	86	83	78	78	81	80	86	83	79	77	80	81	83.3
		MIN	67	64	71	68	62	68	73	71	64	67	63	54	57	69	68	63	59	66	59	59	67	62	52	56	67	64	69	66	55	50	53	63.0
SMITHSBURG 2NW	08	MAX	93	95	93	78	86	86	81	87	87	87	84	84	84	81	85	76	84	86	86	84	85	84	84	78	82	82	85	77	77	74	80	83.7
		MIN	62	62	63	70	64	64	71	72	66	66	56	51	51	64	63	61	57	59	60	57	58	62	48	56	62	62	67	55	50	50	60.4	
WESTMINSTER	07	MAX	92	95	93	79	81	85	84	92	89	89	87	84	83	80	82	79	83	88	88	88	89	87	79	81	85	81	88	78	81	75	81	84.7
		MIN	68	67	69	70	65	67	71	73	68	69	63	57	58	67	66	64	63	63	63	61	61	65	53	55	63	65	66	67	59	53	53	63.6
APPALACHIAN MOUNTAIN 07																																		
CUMBERLAND 2	18	MAX			97	89	94	88	85	91	92	89	87	86	89	89	86	77	88	91	91	87	87	88	83	84	89	88	89	88	83	80	84	87.6
		MIN			68	73	72	72	72	71	69	67	61	54	54	61	63	63	56	58	61	59	59	60	51	51	55	63	63	70	57	51	51	61.6
FROSTBURG 2	07	MAX	87	87	86	77	89	82	76	80	81	81	78	76	81	78	81	70	78	85	82	80	82	81	71	76	82	78	81	72	73	69	78	79.3
		MIN	60	65	67	68	67	67	67	65	64	59	54	50	50	60	59	59	55	56	59	54	55	57	49	50	55	58	58	65	53	50	50	58.2
SHARPSBURG 5 S	07	MAX	94	96	95	77	86	86	86	91	91	89	89	85	86	84	87	79	85	89	89	87	89	86	80	81	85	85	89	80	82	76	81	86.0
		MIN	62	63	64	71	67	69	71	67	66	64	57	52	53	65	62	60	58	58	61	59	59	61	49	49	60	64	63	68	57	52	52	60.7
WILLIAMSPORT	06	MAX	95	96	96	84	87	84	81	90	87	87	85	86	86	87	79	87	89	90	87	87	74	81	81	86	86	88	79	84	77	83	85.6	
		MIN	64	66	70	73	69	69	72		70	69	61	56	56	56	66	65	61	61	62	61	62	62	53	52	55	62	65	70	59	54	53	62.5
ALLEGHENY PLATEAU 08																																		
OAKLAND 1 SE	07	MAX	86	85	85	85	76	83	79	79	81	78	78	76	77	81	79	75	78	83	81	81	82	82	71	75	79	76	79	78	73	73	78	79.1
		MIN	57	59	67	68	68	68	65	64	63	53	46	48	62	60	61	49	52	53	52	54	54	46	48	53	56	58	61	53	46	49	56.8	
SAVAGE RIVER DAM	08	MAX	90	89	88	79	88	84	78	83	82	80	78	76	79	83	82	75	80	81	83	72	82	80	73	75	82	78	80	79	77	71	76	80.1
		MIN	61	63	66	69	71	70	69	67	66	63	57	50	50	59	62	63	54	55	58	57	57	59	50	50	53	61	61	67	56	50	50	59.5
DELAWARE NORTHERN 01																																		
BEAR 2 SW	24	MAX	93	89	81	79	84	87	89	91	88	86	83	85	85	77	78	82	87	87	85	85	85	79	78	83	78	85	77	81	77	81	83	83.5
		MIN	70	70	72	67	62	69	75	73	70	66	61	57	57	69	67	66	61	70	65	61	67	59	54	55	71	65	72	60	56	54	55	64.4

DAILY TEMPERATURES (°F)

STATION	OB. TIME	MAX/MIN	DAY OF MONTH																															AVERAGE
			01	02	03	04	05	06	07	08	09	10	11	12	13	14	15	16	17	18	19	20	21	22	23	24	25	26	27	28	29	30	31	
WILMINGTON NEW CASTLE	24	MAX	97	92	81	79	84	86	91	93	87	87	84	86	84	76	79	83	88	87	85	85	83	79	79	84	78	86	77	80	79		83	
		MIN	72	69	70	68	65	72	76	74	70	68	63	60	62	69	69	66	64	69	65	63	70	62	56	59	71	67	71	61	58		57	
WILMINGTON PORTER RES	24	MAX	94	89	83	78	85	87	88	90	83	84	81	81	83	74	78	79	86	85	85	84	84	76	78	81	78	84	84	76	75	79	82	
		MIN	73	71	68	68	66	71	74	76	70	67	67	63	64	67	67	65	67	67	64	63	69	66	60	61	69	63	66	64	60	60	61	
SOUTHERN 02																																		
DOVER	16	MAX	92	93	89	81	82	86	92	91	91	91	89	85	86	81	81	82	85	89	89	84	87	86	80	85	85	83	83	83	82	80	83	
		MIN	73	72	68	74	63	68	76	75	71	72	67	62	63	68	69	66	66	70	62	62	70	62	58	60	70	68	73	64	59	58	58	
LEWES	08	MAX	96	93	90	84	78	83	88	96	90	95	91	83			85																	
		MIN	72	72	72	73	66	69	77	77	73	70	71	63			63																	

SNOWFALL AND SNOW ON GROUND (INCHES)

STATION	DAY OF MONTH																															
	01	02	03	04	05	06	07	08	09	10	11	12	13	14	15	16	17	18	19	20	21	22	23	24	25	26	27	28	29	30	31	
MARYLAND SOUTHERN EASTERN SHORE 01 DELAWARE NORTHERN 01																																

Snowfall: Includes snow and ice Values for NWS stations (J index note) are Mid-Mid (LST)

Snow on ground: Includes snow, sleet, ice, and hail Values for NWS stations (J index note) are observed at 12 UTC (GMT)

Water Equivalent: Given for NWS stations (J index note) only, when snow depth is 2 inches or more, and is measured at 18 UTC (GMT)

PAN EVAPORATION AND WIND

STATION		DAY OF MONTH																															TOTAL OR AVERAGE	
		01	02	03	04	05	06	07	08	09	10	11	12	13	14	15	16	17	18	19	20	21	22	23	24	25	26	27	28	29	30	31		
MARYLAND UPPER SOUTHERN 04 BELTSVILLE	WIND	47	41	43	-	37	-	97	20	48	42	54	42	25	30	42	56	53	14	23	21	17	33	56	22	61	19	38	191	64	29	27	1292	
	EVAP	0.52	0.43	0.28	-	0.21	-	0.47	0.16	0.29	0.24	0.31	0.28	0.24	0.06	-	0.11	0.23	0.18	0.19	0.16	0.18	0.41	0.30	0.21	0.21	0.08	0.13	-	0.18	0.19	0.20	6.45	
	MAX	96	96	95	-	88	-	90	98	95	94	89	88	92	82	89	83	89	94	92	93	95	90	86	89	88	80	92	78	84	84	87	89.6	
	MIN	71	70	72	-	70	-	70	75	73	70	66	63	65	68	66	65	65	67	68	66	66	69	59	59	63	67	67	67	63	59	60	66.5	
UPPER MARLBORO 3 NNW	WIND	-	-	-	-	-	-	-	-	-	-	-	-	-	-	-	-	-	-	-	-	-	-	-	-	-	-	-	-	-	-	-	M	
	EVAP	-	0.26	0.27	0.04	-	-	-	0.44	0.34	0.18	-	-	-	-	0.51	0.08	0.19	0.21	0.18	-	-	-	-	-	0.16	0.20	0.07	-	-	-	-	3.13	
	MAX	100	100	98	83	92	93	93	95	98	98	94	91	96	85	90	83	90	95	94	95	95	93	90	91	91	83	95	76	84	83	89	91.4	
	MIN	73	69	70	74	68	68	69	72	72	69	66	63	64	66	69	66	67	69	70	67	67	73	61	61	63	68	68	68	68	61	61	67.4	
ALLEGHENY PLATEAU 08 SAVAGE RIVER DAM	WIND	-	-	-	-	-	-	-	-	-	-	-	-	-	-	-	-	-	-	-	-	-	-	-	-	-	-	-	-	-	-	-	M	
	EVAP	-	-	-	-	-	-	-	-	-	-	-	-	-	-	-	-	-	-	-	-	-	-	-	-	-	-	-	-	-	-	-	M	
	MAX	-	-	-	-	-	-	-	-	-	-	-	-	-	-	-	-	-	-	-	-	-	-	-	-	-	-	-	-	-	-	-	-	M
	MIN	-	-	-	-	-	-	-	-	-	-	-	-	-	-	-	-	-	-	-	-	-	-	-	-	-	-	-	-	-	-	-	-	M

Evaporation: Is measured in hundredths of inches.

Wind: Is measured in miles.

Max and Min: The maximum and minimum temperatures (Fahrenheit) of the water in the evaporation pan.

STATION INDEX

STATION	INDEX NO.	DIVISION	COUNTY	LATITUDE	LONGITUDE	ELEVATION (IN FEET)	OBSERVATION TIME AND TABLES			
							LOCAL STD TIME			
							TEMP	PRECIP	EVAP	SPECIAL SEE (NOTES)
MARYLAND										
ABERDEEN PHILLIPS FLD R	0015	06	HARFORD	39 28	76 10W	57	07	07		CH
ASSATEAGUE	0335	01	WORCESTER	38 4	75 13W	10	24	24		H
BALTIMORE WASH INTL AP R	0465	04	ANNE ARUNDEL	39 10	76 41W	156	24	24		CHJ
BELTSVILLE R	0700	04	PRINCE GEORGE'S	39 2	76 56W	145	08	08	EV	CH
BRIGHTON DAM	1125	06	MONTGOMERY	39 11	77 0W	330		07		H
CATOCTIN MTN PARK	1530	06	FREDERICK	39 39	77 29W	1610	17	17		H
CHESTERTOWN	1750	05	KENT	39 13	76 3W	40	23	23		H
CONOWINGO DAM	2060	06	HARFORD	39 39	76 11W	40	07	07		H
CUMBERLAND 2	2282	07	ALLEGANY	39 39	78 45W	730	18	18		H
CYLBURN	2308	06	BALTIMORE	39 21	76 39W	235	08	08		H
DALECARLIA RSVR	2325	04	PRINCE GEORGE'S	38 56	77 6W	150	08	08		H
DAMASCUS 3 SSW	2336	06	MONTGOMERY	39 15	77 13W	700	22	22		H
EMMITSBURG 2 SE	2906	06	FREDERICK	39 41	77 17W	403	07	07		H
FREDERICK 2 NNE	3353	06	FREDERICK	39 26	77 24W	280	07	07		H
FROSTBURG 2	3415	07	ALLEGANY	39 40	78 56W	2170	07	07		H
LAUREL 3 W	5111	04	PRINCE GEORGE'S	39 5	76 54W	400	24	07		H
MD SCI CTR BALTIMORE R	5718	04	BALTIMORE (CITY)	39 17	76 37W	20	24	24		CH
MECHANICSVILLE 5 NE	5865	03	ST MARY'S	38 28	76 42W	100	07	07		H
MILLERS 4 NE R	5934	06	CARROLL	39 43	76 48W	860	18	18		CH
NATL ARBORETUM DC	6350	04	DISTRICT OF COLUMBIA	38 55	76 58W	50	07	07		H
OAKLAND 1 SE	6620	08	GARRETT	39 25	79 24W	2420	07	07		H
OXON HILL	6800	04	PRINCE GEORGE'S	38 47	76 60W	120	08	08		H
PRINCESS ANNE	7330	01	SOMERSET	38 13	75 41W	20	17	17		H
ROYAL OAK 2 SSW	7806	02	TALBOT	38 43	76 11W	10	17	17		H
SALISBURY 2N	8004	01	WICOMICO	38 24	75 36W	20	17	17		H
SALISBURY FAA AP	8005	01	WICOMICO	38 20	75 31W	48	24	24		H
SAVAGE RIVER DAM R	8065	08	GARRETT	39 31	79 8W	1495	08	08	EV	CH
SHARPSBURG 5 S	8207	07	WASHINGTON	39 24	77 43W	500	07	07		H
SMITHSBURG 2NW	8371	06	WASHINGTON	39 40	77 35W	670	08	08		H
SNOW HILL 4 N	8380	01	WORCESTER	38 14	75 23W	30	17	17		H
SOLOMONS	8405	03	CALVERT	38 19	76 27W	12	08	08		H
UPPER MARLBORO 3 NNW	9070	04	PRINCE GEORGE'S	38 51	76 46W	130	08	08	EV	H
WESTMINSTER	9440	06	CARROLL	39 34	76 59W	765	07	07		H
WILLIAMSPORT	9570	07	WASHINGTON	39 36	77 50W	360	06	06		H
DELAWARE										
BEAR 2 SW	1200	01	NEW CASTLE	39 36	75 44W	80	24	24		H
DOVER	2730	02	KENT	39 15	75 31W	30	16	16		H
LEWES	5320	02	SUSSEX	38 47	75 8W	15	08	08		CH
WILMINGTON NEW CASTLE R	9595	01	NEW CASTLE	39 40	75 36W	79	24	24		CHJ
WILMINGTON PORTER RES	9605	01	NEW CASTLE	39 46	75 32W	270	24	24		H

REFERENCE NOTES

STATION NAMES: Name of the city, town or locality. Figures and letters following the station names indicate the distance in miles and direction from the post office or town community center.

DIVISIONS: Areas within a state of similar climatological characteristics. Division averages are calculated using data from stations that record both temperature and precipitation (i.e. not precipitation alone).

NORMALS: The average value of the meteorological element over a time period. Effective 1 January 2002, the averaging period is 1971 to 2000. The normals for National Weather Service localities have been adjusted so as to be representative for the current observation site.

MONTHLY DEGREE DAY TOTALS: One heating (cooling) degree day is accumulated for each whole degree that the daily mean temperature is below (above) 65 degrees Fahrenheit.

PRECIPITATION: Values shown in hundredths of inches are water equivalent totals, i.e., total of liquid and melted frozen precipitation. In the "Monthly Summarized Data" table the total snow and sleet values shown in tenths of inches are unmelted amounts. The max depth on ground values of snow and sleet shown in whole inches are cumulative unmelted amounts. The number of days with .10, .50, 1.00 or more refers to water equivalents.

PRECIPITATION QUALITY CONTROL: The NCDC quality control process may flag precipitation data that are spatially inconsistent, exceed climatological limits, or are inconsistent with prevailing weather patterns.

TEMPERATURE: Original temperature values are given in the "Daily Temperature" table. Summary temperature information (averages, departures, extremes, monthly degree day totals) is based on the values labeled MAX/MIN.

WIND: (As shown in the "Evaporation and Wind" table) the total wind movement in miles over the evaporation pan as determined by an anemometer recorder located 6-8 inches above the pan.

SYMBOLS AND LETTERS USED IN THE STATION INDEX TABLE

- C Station is equipped with recording rain gage (R) but values in this bulletin are from a non-recording rain gage unless indicated by an R.
- G Observations appear in the "Soil Temperatures" table.
- H Observations appear in the "Snowfall and Snow on the Ground" table.
- J Station also published as a Local Climatological Data publication.
- VAR Observation time varies.
- SR Observation time near sunrise.
- SS Observation time near sunset.

SYMBOLS AND LETTERS USED IN THE DATA TABLES

(DAILY DATA ARE FOR THE 24 HOURS IMMEDIATELY PRECEDING OBSERVATION TIME.)

BLANK Entries in the "Monthly Summarized Data" table indicate no record.

BLANK Entries in the "Daily Precipitation" and "Snowfall and Snow on the Ground" tables indicate zero.

BLANK Entries in the "Daily Temperature" table indicate a missing record

- No record. Data not recorded or not received in time for publication.

+ Precipitation or temperature extremes occurred on one or more previous dates during the month.

* Rain gage not read. Precipitation is included in the amount following the asterisks. Time distribution may not be known. A * preceding the monthly total indicates precipitation amount is being carried forward to next month's total, and may include amounts from the previous month(s).
a As a subscript, indicates accumulated total.

A Amount of precipitation is the total of observer's entries for the current month. It may include precipitation that occurred during the previous month. Refer to earlier bulletin to determine date of last reading. (Hawaii stations)

F Monthly calculation flagged value. F is appended to average and/or total values computed which exclude one or more daily data values that have been flagged by the GHCN-Daily Dataset

M Insufficient or partial data. M is appended to average and/or total values computed with 1-9 daily values missing. M appears alone if 10 or more daily values are missing, (8 or more for wind and evaporation).

N Indicates snow fall or Snowdepth totals are computed with one or more missing days.

R Amounts from recording rain gage.

T Trace. An amount too small to measure.

SEASONAL TABLES: Monthly and seasonal snowfall and heating degree days for the 12 months ending with the June data are published in the July issue of this bulletin. Cooling degree days for the calendar year are published in the "Climatological Data Annual Summary."

Information concerning the history of changes in locations, exposure, etc. of substations is kept on file at the National Climatic Data Center. Historical information of regular National Weather Service Offices may be obtained from the "Local Climatological Data" annual publication. The contents of this publication may be reprinted or otherwise used freely, with proper credit to the National Climatic Data Center. The data are also available digitally.

Effective with the January 2011 Data-Month, COOP Observer Names are no longer included in the Monthly and Annual Climatological Data Publications. This information is not published to ensure the privacy of personal information pursuant to Section 208 of the E-Government Act of 2002 (44 USC 3601).

The GHCN-Daily Quality Control Flags shown below are displayed as superscripts with the data. For more Information on Global Historical Climatology Network - Daily and flags, see:
<http://www.ncdc.noaa.gov/oa/climate/ghcn-daily/>
and

Comprehensive Automated Quality Assurance of Daily Surface Observations.

Durre, Imke, Matthew J. Menne, Byron E. Gleason, Tamara G. Houston,

Russell S. Vose, 2010: J. Appl. Meteor. Climatol., 49, 16151633.

doi: 10.1175/2010JAMC2375.1

Blank = Passed All checks

D = failed duplicate check

G = failed gap check

I = failed internal consistency check

K = failed streak/frequent-value check

L = failed check on length of multiday period

M = failed megaconsistency check

N = failed naught check

O = failed climatological outlier check

R = failed lagged range check

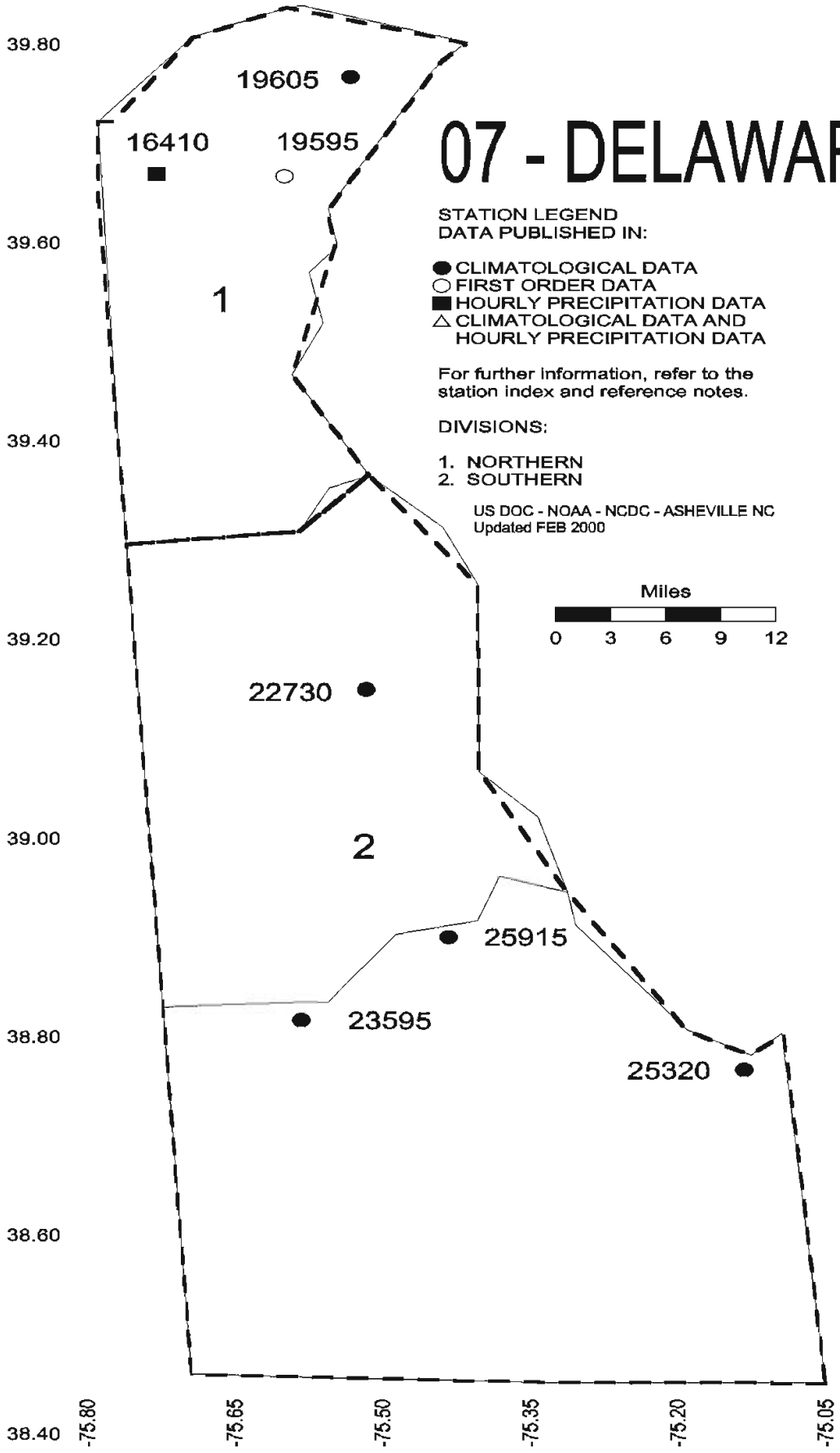
S = failed spatial consistency check

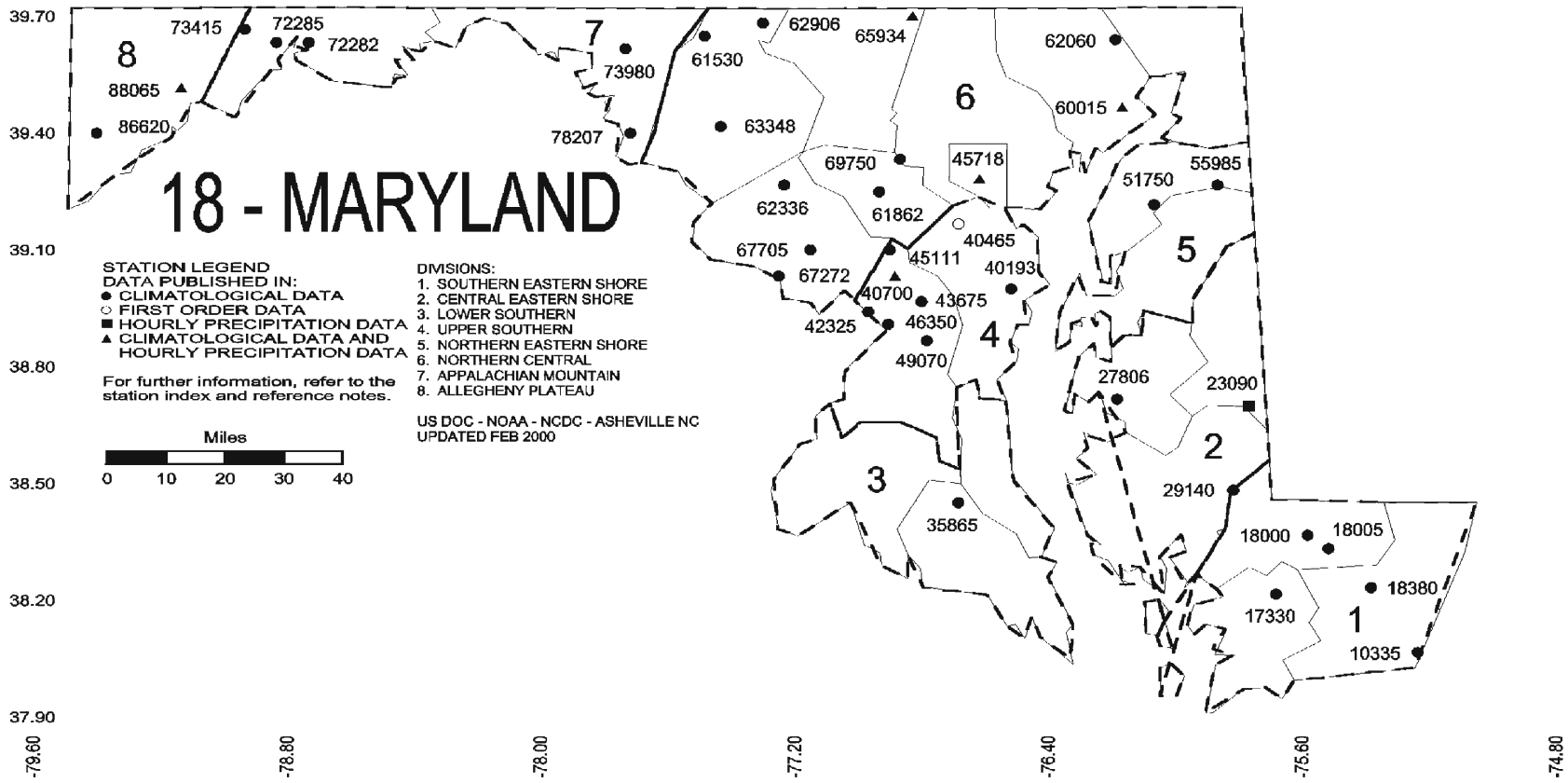
T = failed temporal consistency check

W = temperature too warm for snow

X = failed bounds check

07 - DELAWARE





These and other publications are available from the National Climatic Data Center

Hourly Precipitation Data

This publication contains hourly precipitation amounts obtained from recording rain gages located at National Weather Service, Federal Aviation Administration, and cooperative observer stations. Published data are displayed in inches and tenths or inches and hundredths at local standard time. HPD includes maximum precipitation for nine (9) time periods from 15 minutes to 24 hours, for selected stations.

Climatological Data

Monthly editions contain station daily maximum and minimum temperatures and precipitation. Some Stations provide daily snowfall, snow depth, evaporation, and soil temperature data. Each edition also contains monthly summaries for heating and cooling degree days (65 degree F base). The July issue contains a recap of monthly heating degree days and snow data for the preceding July through June.

The Annual issue contains monthly and annual averages of temperature, precipitation, temperature extremes, freeze data, soil temperatures, evaporation, and a recap of monthly cooling degree days.

Storm Data

Monthly issues contain a chronological listing, by states, of occurrences of storms and unusual weather phenomena. Reports contain information on storm paths, deaths, injuries, and property damage. An "Outstanding storms of the month" section highlights severe weather events with photographs, illustrations, and narratives. The December issue includes annual tornado, lightning, flash flood, and tropical cyclone summaries.

Monthly Climatic Data for the World

This publication contains monthly means for temperature, pressure, precipitation, vapor pressure, and sunshine for approximately 2,000 surface data collection stations worldwide and monthly mean upper air temperatures, dew point depressions, and wind velocities for approximately 500 observing sites.

Local Climatological Data

LCD publications summarize temperature, relative humidity, precipitation, cloudiness, wind speed and direction observations for several hundred cities in the U.S. and its territories. Each monthly publication also contains 3 hourly weather observations for that month and a hourly summary of precipitation. Annual LCD publications contain a summary of the past calendar year as well as historical averages and extremes.

For Information Call:

(828) 271-4800 Option 2

(828) 271-4010 (TDD)

(828) 271-4876 (Fax)

NOAA\National Climatic Data Center
Attn: User Engagement & Services Branch
151 Patton Avenue
Asheville, NC 28801-5001

PRSRT STD
POSTAGE & FEES PAID
United States Department of Commerce
NOAA Permit No. G-19

OFFICIAL BUSINESS
PENALTY FOR PRIVATE USE \$300
ADDRESS CORRECTION REQUESTED

To change your address, please return a copy of the mailing label along with your new address to:

NOAA\National Climatic Data Center
Attn: User Engagement & Services Branch
151 Patton Avenue
Asheville, NC 28801-5001

Customer Services Number: (828) 271-4800, option 2
TDD : (828) 271-4010
Fax number: (828) 271-4876

NCDC now offers an annual online subscription for the *Climatological Data* publication. When you purchase this subscription service, you will have **immediate online access** to all previous Climatological Data publications. Your subscription is valid for one year after purchase.

The total cost is \$42 for online delivery (including back issues).

To order this and other subscriptions online with your credit card, go to:

<http://www.ncdc.noaa.gov/oa/mpp/> and choose subscription.