



# CLIMATOLOGICAL DATA

## MARYLAND AND DELAWARE

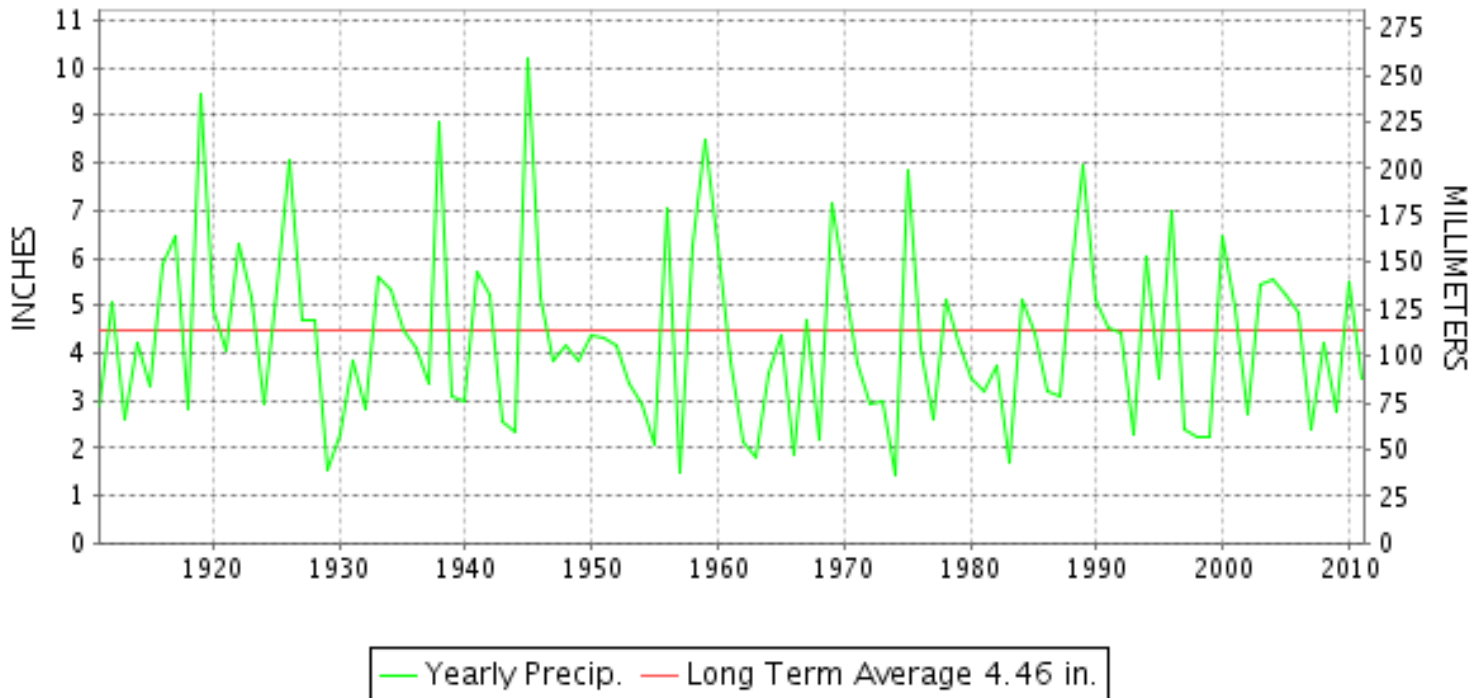
JULY 2011

VOLUME 115 NUMBER 07

ISSN 0145-0549

GHCND Ver: 2.91-upd-2012021008

### JULY PRECIPITATION BY YEAR



#### TEMPERATURE AND PRECIPITATION EXTREMES

##### MARYLAND

HIGHEST TEMPERATURE	108	JULY 22	MD SCI CTR BALTIMORE
LOWEST TEMPERATURE	48	JULY 01	OAKLAND 1 SE
GREATEST TOTAL PRECIPITATION	5.08		ASSATEAGUE
LEAST TOTAL PRECIPITATION	0.81		CUMBERLAND 2
GREATEST 1 DAY PRECIPITATION	2.23	JULY 25	SOLOMONS

"I certify that this is an official publication of the National Oceanic and Atmospheric Administration (NOAA) It is compiled using information from weather observing sites supervised by NOAA/National Weather Service and received at the National Climatic Data Center(NCDC), Asheville, North Carolina 28801."

Director  
National Climatic Data Center

noaa

National  
Oceanic and  
Atmospheric Administration

National  
Environmental Satellite, Data  
and Information Service

National  
Climatic Data Center  
Asheville, North Carolina

**DELAWARE**

HIGHEST TEMPERATURE	102	JULY 22	WILMINGTON NEW CASTLE
LOWEST TEMPERATURE	57	JULY 01	BEAR 2 SW
GREATEST TOTAL PRECIPITATION	5.48		BEAR 2 SW
LEAST TOTAL PRECIPITATION	0.88		WILMINGTON PORTER RES
GREATEST 1 DAY PRECIPITATION	2.95	JULY 08	BEAR 2 SW



# MONTHLY STATION AND DIVISION SUMMARY

STATION	TEMPERATURE (°F)											PRECIPITATION (IN)												
	AVERAGE MAXIMUM	AVERAGE MINIMUM	AVERAGE	DEPARTURE FROM NORMAL	HIGHEST	DATE	LOWEST	DATE	HEATING DEG. DAYS	COOLING DEG. DAYS	NO. OF DAYS				TOTAL	DEPARTURE FROM NORMAL	GREATEST 24 HOURS	DATE	ICE PELLETS, SNOW			NO OF DAYS		
											MAX		MIN						TOTAL	MAX DEPTH ON GROUND	DATE	10 OR MORE	50 OR MORE	1 00 OR MORE
											>=90	<=32	<=32	<=0										
EMMITSBURG 2 SE	88.0	66.1	77.1	2.1	99	23	55	01	0	380	12	0	0	0	3.98	0.34	1.75	03	0.0	0		5	3	1
FREDERICK 2 NNE	M	M	M												M				0.0	0				
MILLERS 4 NE	90.0	66.5	78.3	4.4	102	22	55	02	0	417	15	0	0	0	1.99	-1.58	0.74	08	0.0	0		4	2	0
SMITHSBURG 2NW	89.4M	63.8MF	76.6MF		98	30+	52	02+	0	341	12	0	0	0	1.83	0.95	03	0.0	0		5	1	0	
WESTMINSTER	90.5	68.3	79.4	3.6	102	23	57	01	0	451	19	0	0	0	3.81	0.10	1.37	09	0.0	0		6	2	2
--DIVISIONAL DATA----->			78.6	3.3											2.95	-1.01								
<b>APPALACHIAN MOUNTAIN 07</b>																								
CUMBERLAND 2	94.3	67.5	80.9	6.4	105	22	54	02	0	498	27	0	0	0	0.81	-2.61	0.62	09	0.0	0		1	1	0
FROSTBURG 2	84.2	62.0	73.1	4.6	95	23	54	02+	1	260	5	0	0	0	0.96	-2.95	0.43	09	0.0	0		2	0	0
SHARPSBURG 5 S	90.7	63.4	77.1		101	30	54	02	0	380	19	0	0	0	M				0.0	0				
WILLIAMSPORT	90.7M	65.8M	78.3M		102	30	56	02	0	361	16	0	0	0	M 2.39		1.42	08	N 0.0	0		4	1	1
--DIVISIONAL DATA----->			77.4	4.6											1.39	-2.25								
<b>ALLEGHENY PLATEAU 08</b>																								
OAKLAND 1 SE	83.2	59.0	71.1	2.7	93	23	48	01	7	202	2	0	0	0	3.50	-1.73	0.90	25	0.0	0		7	4	0
SAVAGE RIVER DAM	84.5	62.0F	73.3F	3.6	95	23	53	02	0	266	5	0	0	0	2.17	-2.02	0.49	25	0.0	0		7	0	0
--DIVISIONAL DATA----->			72.2	3.6											2.84	-2.03								
<b>DELAWARE NORTHERN 01</b>																								
BEAR 2 SW	90.4	68.4	79.4		100	23+	57	01	0	452	15	0	0	0	5.48		2.95	08	0.0	0		4	3	2
WILMINGTON NEW CASTLE	91.2	70.4	80.8	4.2	102	22	59	01	0	496	18	0	0	0	3.73	-0.55	2.48	08	N 0.0	0		4	2	1
WILMINGTON PORTER RES	89.7	71.0	80.4		101	22	61	17	0	481	16	0	0	0	0.88	0.78	08	0.0	0		2	1	0	
--DIVISIONAL DATA----->			80.2	4.0											3.36	-1.14								
<b>SOUTHERN 02</b>																								
DOVER	92.4M	71.5M	82.0M		101	22	62	15	0	515	23	0	0	0	M 4.22		1.32	19	N 0.0	0		6	3	3
LEWES	M	M	M												FM 2.46	0.58	07	0.0	0		4	1	0	
--DIVISIONAL DATA----->			82.0	5.5											3.34	-0.58								

DAILY PRECIPITATION (INCHES)

STATION	TOTAL	DAY OF MONTH																														
		01	02	03	04	05	06	07	08	09	10	11	12	13	14	15	16	17	18	19	20	21	22	23	24	25	26	27	28	29	30	31
<b>MARYLAND</b>																																
<b>SOUTHERN</b>																																
<b>EASTERN SHORE 01</b>																																
ASSATEAGUE	5.08			0.83	0.03	0.16		1.62	0.23			0.06							0.40					1.72	0.03							
PRINCESS ANNE	M	-	-	-	-	-	0.20	0.92	-	-	-	0.09	-	-	-	-	-	-	0.24	-	0.07	-	-	-	-	1.58	0.18	-	-	-	-	
SALISBURY 2N	M	-	-	-	-	-	-	-	-	-	-	-	-	-	-	-	-	-	-	-	-	-	-	-	-	-	-	-	-	-	-	
SALISBURY FAA AP	3.77			0.17		0.01	0.18	1.08	0.05		T	0.08							0.52					0.73	0.95							
SNOW HILL 4 N	3.78			0.10		0.88			1.65					0.08					0.57					0.17		0.12	0.18				0.03	
<b>CENTRAL</b>																																
<b>EASTERN SHORE 02</b>																																
FEDERALSBURG R	M	-	-	-	-	-	-	-	-	-	-	-	-	-	-	-	-	-	-	-	-	-	-	-	-	-	-	-	-	-	-	
ROYAL OAK 2 SSW	3.13			0.10	0.09	0.03	0.02		0.66			T	0.38						0.40							1.13					0.32	
<b>LOWER SOUTHERN 03</b>																																
MECHANICSVILLE 5 NE	4.11			0.13	0.14	0.01			1.16			0.80		0.16						0.19					0.11	1.41						
SOLOMONS	4.02			0.04	0.08	T		0.15	0.71			0.01		0.07					0.65						2.23	0.08						
<b>UPPER SOUTHERN 04</b>																																
BALTIMORE WASH INTL AP	2.77			0.55	T		T	0.10	0.83			0.17		0.26					0.16				0.06		0.64			T				
BELTSVILLE	2.78			0.47	0.47				1.18			0.24		0.19					T							0.23						
DALECARLIA RSVR	2.58			1.45	0.20			0.06	0.15			0.20		0.42												0.10						
LAUREL 3 W	M	-	-	-	-	-	-	-	-	-	-	-	-	-	-	-	-	-	-	-	-	-	-	-	-	-	-	-	-	-	-	
MD SCI CTR BALTIMORE R	4.06			0.23				1.52	0.29			0.06		0.28					1.30						0.38							
NATL ARBORETUM DC	2.16			0.38	0.66				0.02	0.45			0.27		0.18											0.20						
OXON HILL	3.50			0.46	0.32	0.01		0.04		1.14			T		0.98									0.41		0.14						
UPPER MARLBORO 3 NNW	3.31				0.38	0.51				1.27			0.68		0.29											0.18						
<b>NORTHERN</b>																																
<b>EASTERN SHORE 05</b>																																
CHESTERTOWN	M	-	-	-	-	-	-	-	-	-	-	-	-	-	-	-	-	-	-	-	-	-	-	-	-	-	-	-	-	-	-	
<b>NORTHERN CENTRAL 06</b>																																
ABERDEEN PHILLIPS FLD	2.57			0.31					0.21	1.13			0.53													0.21			0.18			
BRIGHTON DAM	M 4.08	-	-	0.80			0.10		0.70			0.51		0.19					0.05						1.73							
CATOCTIN MTN PARK	M			0.47					0.79				0.21	0.02																		
CONOWINGO DAM	2.82			0.05					0.05	0.80			0.82								0.02				0.04		0.99		0.03	0.02		
CYLBURN	M	-	-	-	-	0.20 <sup>L</sup>			0.76	0.43	-	-	0.48 <sup>L</sup>		0.03					0.05 <sup>L</sup>						-	1.75 <sup>L</sup>		T	-		
DAMASCUS 3 SSW	2.49		T	1.03	0.01	0.02			0.84			0.29		0.25					T							0.05						
EMMITSBURG 2 SE	3.98			1.75					0.23	0.52			0.43													0.96			0.09			
FREDERICK 2 NNE	M	-	-	-	-	-	-	-	-	-	-	-	-	-	-	-	-	-	-	-	-	-	-	-	-	-	-	-	-	-	-	
MILLERS 4 NE	1.99			0.21			0.06	0.74				0.19	T							T			T	0.07	0.66				0.06			
SMITHSBURG 2NW	1.83			0.95	0.05	0.13			0.15												0.40									0.15		
WESTMINSTER	3.81			0.41					0.16	1.37			0.18							0.33						1.30			0.06			
<b>APPALACHIAN</b>																																
<b>MOUNTAIN 07</b>																																
CUMBERLAND 2	0.81				T	0.01			0.01	0.62			0.02							0.08				0.03	0.02				0.01	0.01		

DAILY PRECIPITATION (INCHES)

STATION	TOTAL	DAY OF MONTH																															
		01	02	03	04	05	06	07	08	09	10	11	12	13	14	15	16	17	18	19	20	21	22	23	24	25	26	27	28	29	30	31	
FROSTBURG 2	0.96			0.03	T	0.02			0.02	0.43			0.03							0.07	0.01			0.35		T						T	
SHARPSBURG 5 S	M		-	-	-	-		0.38 <sup>L</sup>	0.58	0.96				0.47						0.43				-	-	-							
WILLIAMSPORT	M 2.39								1.42	0.30			-	0.05						0.18	0.01		0.37			0.09 <sup>L</sup>				0.02	0.01		
<b>ALLEGHENY PLATEAU 08</b>																																	
OAKLAND 1 SE	3.50			0.06	0.70	0.01			0.04	0.50		0.36								0.20				0.10	0.90		0.03				0.60		
SAVAGE RIVER DAM R	2.17			0.07	0.13	0.03			0.20	0.48		0.38								0.10	0.05				0.49	0.04					0.20		
<b>DELAWARE</b>																																	
<b>NORTHERN 01</b>																																	
BEAR 2 SW	5.48			0.02				0.01	2.95			T		T						0.06				T		1.74			0.52	0.18			
NEWARK UNIV FARM R	M	-	-	-	-	-	-	-	-	-	-	-	-	-	-	-	-	-	-	-	-	-	-	-	-	-	-	-	-	-	-	-	
WILMINGTON NEW CASTLE R	3.73			0.02				T	2.48			T		T						0.35				T		0.63			0.25	T			
WILMINGTON PORTER RES	0.88								0.78											T					0.10			T					
<b>SOUTHERN 02</b>																																	
DOVER	M 4.22						0.12	0.32		1.23			0.02							1.32					1.02	0.14						0.05	
LEWES	FM 2.46		*	*	*	0.02 <sub>a</sub>	0.16	0.58		*	*	1.15 <sub>a</sub>		0.05		*	*	0.00 <sub>a</sub>		0.19			*	*	0.20 <sub>a</sub>	0.11		0.01 <sup>L</sup>	0.00 <sup>L</sup>	0.00 <sub>a</sub> <sup>L</sup>	-		

### DAILY TEMPERATURES (°F)

STATION	OB. TIME	MAX/MIN	DAY OF MONTH																															AVERAGE	
			01	02	03	04	05	06	07	08	09	10	11	12	13	14	15	16	17	18	19	20	21	22	23	24	25	26	27	28	29	30	31		
<b>MARYLAND SOUTHERN EASTERN SHORE 01</b>																																			
ASSATEAGUE	24	MAX MIN	86 64	89 63	87 73	87 74	88 71	84 71	90 71	84 71	85 71	88 66	84 69	95 71	94 71	81 68	82 53	83 59	83 64	84 70	88 71	86 71	85 72	98 72	102 72	97 72	88 71	95 75	90 75	88 70	93 77	93 79	89 69	88.6 69.7	
PRINCESS ANNE	17	MAX MIN						90 68	95 70	92 72		91 71	93 79	94 73	92 63	84 59			93 68	93 70	94 67	93 72	100 81				89 74	92 65	92 63	93 61	97 76			M M	
SALISBURY 2N	17	MAX MIN																																	M M
SALISBURY FAA AP	24	MAX MIN	90 59	93 61	92 71	92 72	90 73	89 70	95 71	91 72	90 70	91 66	92 67	95 77	94 73	83 62	84 57	87 58	91 65	93 69	94 73	91 75	97 80	102 82	103 82	98 76	90 75	92 74	90 71	92 67	98 79	95 74	95 70	92.5 70.4	
SNOW HILL 4 N	17	MAX MIN	89 56	91 56	92 70	93 70	93 71	91 69	94 71	92 73	90 73	92 64	91 66	94 78	93 72	89 62	87 54	88 54	91 58	95 66	93 71	94 70	102 73	101 80	100 77	91 74	94 72	94 72	93 64	101 73	100 75	97 61	93.2 68.3		
<b>CENTRAL EASTERN SHORE 02</b>																																			
ROYAL OAK 2 SSW	17	MAX MIN	85 63	89 64	89 71	88 70	91 74	90 73	93 70	89 73	86 72	89 67	90 75	92 78	90 73	83 64	81 65	85 63	88 69	91 73	93 75	92 72	95 77	100 79	99 81	97 80	90 74	87 72	85 74	91 67	97 78	92 80	89 71	90.2 72.2	
<b>LOWER SOUTHERN 03</b>																																			
MECHANICSVILLE 5 NE	07	MAX MIN	83 61	85 59	87 59	88 69	85 71	86 70	86 70	90 72	87 68	85 65	85 69	90 69	90 71	88 60	79 61	77 58	83 65	85 67	88 72	89 71	89 72	93 78	97 78	97 77	92 73	88 72	88 70	88 67	88 67	95 73	91 71	87.8 68.5	
SOLOMONS	08	MAX MIN	84 69	86 71	86 72	89 72	86 73	87 75	84 71	89 73	88 71	88 72	90 74	91 78	93 78	90 71	82 69	83 69	83 71	89 72	91 76	93 73	89 78	92 81	99 83	98 79	94 74	87 75	90 75	88 76	95 78	98 81	91 79	89.5 74.5	
<b>UPPER SOUTHERN 04</b>																																			
BALTIMORE WASH INTL AP	24	MAX MIN	89 60	93 58	93 69	89 70	93 69	89 71	95 70	87 71	90 68	90 72	93 74	93 74	92 66	83 64	83 60	87 68	91 70	95 74	95 72	93 77	100 81	106 78	102 78	98 78	91 73	95 72	90 71	91 68	101 77	96 73	98 68	92.9 70.4	
BELTSVILLE	08	MAX MIN	85 60	87 59	91 69	92 68	88 70	91 70	87 70	94 71	85 67	88 66	89 69	92 72	92 71	89 62	84 64	81 59	85 66	88 67	92 74	92 72	94 75	97 79	102 77	98 77	94 75	88 71	93 68	90 67	92 75	99 77	94 69	90.7 69.6	
DALECARLIA RSVR	08	MAX MIN	87 63	88 62	94 68	92 69	85 69	91 72	91 72	94 72	76 69	90 68	92 68	94 74	93 73	85 62	83 66	87 68	90 71	95 75	94 75	97 79	99 78	91 79	99 78	94 79	94 77	95 73	95 73	95 72	103 77	95 73	95 73	92.0 71.2	
LAUREL 3 W	24	MAX MIN																																	M M
MD SCI CTR BALTIMORE	24	MAX MIN	92 74	94 73	98 73	94 76	96 77	95 79	98 73	90 76	93 75	96 78	98 78	98 81	96 78	88 72	90 72	91 74	95 77	99 80	97 78	95 83	103 88	108 86	103 86	100 86	93 78	98 79	93 79	94 79	104 82	97 83	99 79	96.3 78.0	
NATL ARBORETUM DC	07	MAX MIN	90 66	92 62	98 70	94 70	86 72	92 73	90 72	95 72	90 70	92 74	93 74	95 76	96 63	93 67	93 64	96 69	96 72	96 75	93 74	96 77	100 82	105 79	102 82	102 79	97 77	96 74	95 74	93 70	96 74	96 80	97 75	94.3 72.5	
OXON HILL	08	MAX MIN	86 63	89 63	93 68	91 68	88 70	90 72	86 71	94 73	86 70	90 67	91 71	93 73	89 63	82 63	81 62	86 63	89 65	92 69	94 74	94 73	97 76	101 79	100 80	94 76	90 73	93 74	91 72	93 76	93 76	101 74	96 74	91.5 70.6	
UPPER MARLBORO 3 NNW	08	MAX MIN	86 59	90 59	92 68	92 67	88 69	92 70	87 70	94 70	88 67	89 66	89 69	92 72	93 71	91 59	82 62	81 59	84 65	88 68	91 73	95 72	93 75	97 78	102 77	101 76	96 75	92 71	93 71	92 67	93 75	102 78	96 71	91.6 69.3	
<b>NORTHERN EASTERN SHORE 05</b>																																			
CHESTERTOWN	23	MAX																																	M

DAILY TEMPERATURES (°F)

STATION	OB. TIME	MAX/MIN	DAY OF MONTH																															AVERAGE
			01	02	03	04	05	06	07	08	09	10	11	12	13	14	15	16	17	18	19	20	21	22	23	24	25	26	27	28	29	30	31	
<b>NORTHERN CENTRAL 06</b> ABERDEEN PHILLIPS FLD		MIN																																M
	07	MAX	85	86	88	86	87	92	90	92	88	88	89	92	94	90	85	85	87	90	92	94	94	97	103	102	98	90	92	90	90	100	97	91.4
CATOCTIN MTN PARK		MIN	64	60	64	69	70	71	72	71	69	64	68	74	75	63	63	62	66	73	73	72	73	78	78	82	77	73	69	68	68	76	68	70.1
	17	MAX	83	96	101	95	100	86	89	84	84	87	89	87	84	80	79																	M
CONOWINGO DAM		MIN	55	75	62	76	66	64	70	65	65	60	67	70	66	57	59																M	
	07	MAX	76	77	89	92	80	90	90	95	89	92	92	93	94	88	89	89	92	94	98	93	99	104	101	99	91	94	92	89	98	96	91.7	
CYLBURN		MIN	60	63	68	68	68	70	70	68	69	64	65	70	66	67	62	60	64	66	68	68	70	75	73	75	77	72	67	67	70	74	67	68.1
	08	MAX	81	86	87	86	82	86	87	90	83	85	89	90	86	85	79	81	83	87	90	90	87	95	98	94	90	87	88	82	86	94	87	87.1
DAMASCUS 3 SSW		MIN	59	59	68	69	69	71	71	67	66	66	71	70	71	63	64	60	64	69	75	70	72	78	78	80	75	70	67	66	67	75	67	68.9
	22	MAX	85	90	89	83	87	87	92	81	85	89	93	90	87	81	80	84	87	91	90	92	96	100	95	91	87	93	88	89	98	93	93	89.2
EMMITSBURG 2 SE		MIN	58	70	68	66	65	68	68	68	66	66	69	70	68	61	63	61	66	68	73	72	76	78	75	77	72	68	66	68	72	73	69	68.6
	07	MAX	83	85	90	87	84	86	86	89	82	86	87	90	88	84	81	81	83	87	91	90	91	96	99	96	91	85	90	86	86	97	92	88.0
FREDERICK 2 NNE		MIN	55	56	68	67	65	65	67	67	66	63	67	70	69	62	59	59	60	65	66	71	71	73	73	77	72	69	66	63	64	71	63	66.1
	07	MAX																																M
MILLERS 4 NE		MIN																															M	
	18	MAX	84	89	89	87	89	88	91	85	86	88	92	89	88	83	83	85	89	91	94	93	96	102	98	93	91	90	90	84	97	94	93	90.0
SMITHSBURG 2NW		MIN	56	55	67	67	65	66	67	66	65	64	68	70	68	59	59	58	61	65	72	68	73	78	75	76	71	69	63	63	72	73	62	66.5
	08	MAX	82	85			89	86	89	89	87	82	88	92	88	88	88	81	85	88	91	91	93	96	98	94	94	87	93	88	90	98	92	89.4
WESTMINSTER		MIN	52	52			61	62	65	66	64	68	65	70	66	58	58	58	60	61	69	69	72	72	70	74	71	63	59	60	64	64	60	63.8
	07	MAX	84	86	91	90	87	89	90	93	86	87	91	94	90	88	83	83	86	90	93	92	94	98	102	98	93	90	92	87	88	98	92	90.5
<b>APPALACHIAN MOUNTAIN 07</b> CUMBERLAND 2		MIN	57	58	63	68	67	70	70	69	66	66	71	72	71	62	63	59	64	69	72	71	72	78	77	78	75	70	67	66	67	74	66	68.3
	18	MAX	91	92	95	85	92	95	94	85	92	93	98	93	91	87	86	90	94	97	96	97	104	105	101	97	93	96	95	94	100	97	98	94.3
FROSTBURG 2		MIN	57	54	72	65	64	62	67	67	63	61	67	72	70	60	60	58	65	67	75	72	72	80	75	76	73	66	65	71	70	74	72	67.5
	07	MAX	74	81	84	84	78	82	84	85	72	81	85	88	84	81	79	80	83	87	87	83	90	93	95	89	85	82	86	83	90	91	85	84.2
SHARPSBURG 5 S		MIN	54	54	55	63	61	59	60	63	62	58	60	65	65	58	58	57	59	62	67	68	67	67	67	72	68	64	61	60	60	69	60	62.0
	07	MAX	84	87	90	93	86	89	91	93	83	89	91	94	91	89	83	81	85	89	92	93	94	98	100	96	91	89	95	90	91	101	94	90.7
WILLIAMSPORT		MIN	55	54	55	65	61	62	67	68	64	62	63	67	66	55	55	57	57	61	66	68	69	73	70	71	71	67	61	61	62	69	62	63.4
	06	MAX	85	88			89	91	91	78	89	90		91	87	84	82	85	90	93	94	95	99	101	96	92	87	95	92	88	102	94	90.7	
<b>ALLEGHENY PLATEAU 08</b> OAKLAND 1 SE		MIN	58	56			65	65	67	67	63	62		70	61	61	59	59	63	68	71	70	74	73	72	74	69	67	64	64	68	66	65.8	
	07	MAX	76	81	82	85	78	81	83	86	73	83	86	87	85	80	73	76	79	81	85	85	88	90	93	88	84	83	84	82	87	89	85	83.2
SAVAGE RIVER DAM		MIN	48	50	55	61	59	55	55	61	59	54	56	65	64	50	51	52	58	58	66	68	63	63	68	68	67	65	58	57	61	61	52	59.0
	08	MAX	78	83	84	86	80	82	86	87	72	84	83	88	86	84	76	78	81	84	86	83	90	93	95	90	85	80	87	84	87	91	88	84.5
DELAWARE NORTHERN 01 BEAR 2 SW		MIN	54	53	55	64	61	59	59	63	62	57	59	65	65	55	55	55	55	63	65	71	67	67	71	73	69	67	62	60	66 <sup>1</sup>	69	60	62.0
	24	MAX	84	87	87	88	91	89	94	86	89	89	91	92	88	85	85	86	88	92	92	90	97	100	100	98	87	90	88	88	95	92	93	90.4
		MIN	57	59	71	69	68	69	70	71	67	63	69	74	72	60	59	60	65	70	71	68	73	79	77	76	73	71	64	66	73	71	66	68.4



## DAILY TEMPERATURES (°F)

STATION	OB. TIME	MAX/MIN	DAY OF MONTH																															AVERAGE
			01	02	03	04	05	06	07	08	09	10	11	12	13	14	15	16	17	18	19	20	21	22	23	24	25	26	27	28	29	30	31	
WILMINGTON NEW CASTLE	24	MAX	86	89	88	91	93	92	94	88	90	90	91	92	88	87	86	87	89	93	92	89	97	102	100	98	86	91	89	87	95	93	94	91.2
		MIN	59	61	72	70	70	71	72	71	68	64	71	75	72	62	63	64	67	72	72	70	76	82	80	77	74	73	67	69	75	73	69	70.4
WILMINGTON PORTER RES	24	MAX	82	87	87	87	90	91	94	85	87	88	91	90	85	83	85	87	89	93	93	90	97	101	99	95	85	90	85	88	94	91	93	89.7
		MIN	65	65	71	71	72	73	72	70	68	68	72	74	73	64	65	67	61	70	71	70	75	80	80	76	73	72	71	71	72	75	73	71.0
<b>SOUTHERN 02</b>																																		
DOVER	16	MAX	87	88	92	92	91	89	93	93	92	89	92	94	93	93	85	86		94	94	93	98	101	100	99	92	91	90	89	96	95	92	92.4
		MIN	69	65	73	72	74	72	72	71	70	67	72	76	72	63	62	64		71	72	70	75	82	82	75	71	73	72	70	76	74	67	71.5
LEWES	08	MAX	83				90	90	91	92		92	93	93	92	79			88	94	94	85	96			101	86	93	86	89	96		M	
		MIN	62				66	72	71	72		69	74	77	70	62			62	64	64	72	77			74	75	75	70	73	72		M	

# TOTAL SNOWFALL AND NUMBER OF DAYS WITH ONE INCH OR MORE ON GROUND

MARYLAND AND DELAWARE

201107

STATION	JUL		AUG		SEP		OCT		NOV		DEC		JAN		FEB		MAR		APR		MAY		JUN		TOTAL		TOTAL PRECIPITATION			
	SNOWFALL	1 IN ON GD	SNOWFALL	1 IN ON GD	SNOWFALL	1 IN ON GD	SNOWFALL	1 IN ON GD	SNOWFALL	1 IN ON GD	SNOWFALL	1 IN ON GD	SNOWFALL	1 IN ON GD	SNOWFALL	1 IN ON GD	SNOWFALL	1 IN ON GD	SNOWFALL	1 IN ON GD	SNOWFALL	1 IN ON GD	SNOWFALL	1 IN ON GD	SNOWFALL	1 IN ON GD				
<b>MARYLAND</b>																														
<b>SOUTHERN EASTERN SHORE 01</b>																														
ASSATEAGUE																											N 1.0	N 1	25.77	
PRINCESS ANNE													N 0.5															N 0.5	0	16.24
SALISBURY												12.4	7	N 2.5	3	N 1.0		N 2.6										N 18.5	N 10	35.20
SALISBURY FAA AP																												0.0	0	32.50
SNOW HILL 4 N												14.0	11	N 0.5	1	N 1.3		N 1.8									N 17.6	N 12	29.29	
<b>CENTRAL EASTERN SHORE 02</b>																														
ROYAL OAK 2 SSW												5.5	8	N 4.0	5	N 2.1	1	N 0.8										N 12.4	N 14	M 40.58
VIENNA																												0.0	0	0.00
<b>LOWER SOUTHERN 03</b>																														
MECHANICSVILLE 5 NE												N 5.0	7	2.7	4	N 0.8	1	N 0.7	1									N 9.2	N 13	42.97
SOLOMONS												6.0	6	0.4		0.7	1	1.9	1									N 9.0	N 8	43.57
<b>UPPER SOUTHERN 04</b>																														
BALTIMORE WASH INTL AP												1.2	2	10.7	8	2.5	4		T									14.4	14	44.10
BELTSVILLE												2.3	2	7.6	7	1.0	4											10.9	13	41.31
DALECARLIA RSVR												1.1	1	6.9	2		1											8.0	4	42.45
LAUREL 3 W												N 1.5	2	N 7.0														N 8.5	N 2	20.16
MD SCI CTR BALTIMORE																												0.0	0	M 42.19
NATL ARBORETUM DC												1.7	1	FN 5.1	3	N 0.5	3		NT									N 2.2	N 7	M 38.51
OXON HILL										T		2.4	4	10.6	6	1.0	5		0.3									N 14.3	N 15	44.68
UPPER MARLBORO 3 NNW												1.8	3	N 5.3	6	N 1.0	3		N 0.2		T							N 8.3	N 12	41.40
<b>NORTHERN EASTERN SHORE 05</b>																														
CHESTERTOWN												2.0	2	11.0	10	4.6	2		T									N 17.6	N 14	M 47.84
<b>NORTHERN CENTRAL 06</b>																														
ABERDEEN PHILLIPS FLD												0.9		16.9	9	4.5	8											N 22.3	N 17	27.46
CATOCTIN MTN PARK												2.0	2	N 3.5	3													N 5.5	N 5	13.02
CONOWINGO DAM												-	2	14.1	18	N 8.0	18											N 22.1	N 38	49.96
CYLBURN												N 1.0	1	N 14.0	6	N 3.3	14											N 18.3	N 21	19.22
DAMASCUS 3 SSW												3.6	4	N 18.5	12	3.4	15		0.9									N 26.5	N 31	M 46.50
EMMITSBURG 2 SE										T		2.0		17.0	7	N 4.5			N 0.5									N 24.0	N 7	43.75
FREDERICK 2 NNE												1.6	1	N 17.7	9	N 4.3	14		NT									N 23.6	N 24	M 38.65
MILLERS 4 NE												2.3	3	22.9	18	6.8	17		1.5									35.5	38	51.39
SMITHSBURG 2NW												-		N 11.5	1	N 5.0	1											N 16.5	N 2	M 29.09
WESTMINSTER												N 0.5		16.4	11				0.3									N 17.5	N 11	M 19.36
<b>APPALACHIAN MOUNTAIN 07</b>																														
CUMBERLAND 2												1.5	1	N 13.9	14	N 4.0	17		N 1.0									N 20.4	N 32	40.77
FROSTBURG 2												14.0	30	N 23.6	26	N 5.6	23		N 6.4		4							N 50.2	N 83	48.63
SHARPSBURG 5 S												2.8	2	14.4	12	3.7	12		N 1.4		1							N 22.3	N 27	39.56
WILLIAMSPORT														11.7	4	4.0	1		N 0.6									N 16.3	N 5	M 40.85
<b>ALLEGHENY PLATEAU 08</b>																														
OAKLAND 1 SE												0.5		74.5	30	58.8	25	12.3	19		9.1	2						161.7	77	53.67
SAVAGE RIVER DAM												-		-	13	N 10.0	25		19									N 10.0	N 58	M 42.93
<b>DELAWARE</b>																														
<b>NORTHERN 01</b>																														
BEAR 2 SW														4.0	2	18.0	15	5.0	10		T							27.0	27	44.62
WILMINGTON NEW CASTLE														4.0	2	18.0	17	5.0	10		T							N 27.0	N 29	44.22

# TOTAL SNOWFALL AND NUMBER OF DAYS WITH ONE INCH OR MORE ON GROUND

MARYLAND AND DELAWARE

201107

STATION	JUL		AUG		SEP		OCT		NOV		DEC		JAN		FEB		MAR		APR		MAY		JUN		TOTAL		TOTAL PRECIPITATION	
	SNOWFALL	1 IN ON GD	SNOWFALL	1 IN ON GD	SNOWFALL	1 IN ON GD	SNOWFALL	1 IN ON GD	SNOWFALL	1 IN ON GD	SNOWFALL	1 IN ON GD	SNOWFALL	1 IN ON GD	SNOWFALL	1 IN ON GD	SNOWFALL	1 IN ON GD	SNOWFALL	1 IN ON GD	SNOWFALL	1 IN ON GD	SNOWFALL	1 IN ON GD	SNOWFALL	1 IN ON GD		
WILMINGTON PORTER RES											N 3.0	2	27.6	10	N 0.6	10									N 31.2	N 22	M 45.63	
<b>SOUTHERN 02</b>																												
DOVER											9.5	7	N 9.8	16	N 4.7	2									N 24.0	N 25	40.16	
LEWES																									N 0.0	N 0	M 1.75	

MONTHLY AND SEASONAL HEATING DEGREE DAYS

STATION	JUL	AUG	SEP	OCT	NOV	DEC	JAN	FEB	MAR	APR	MAY	JUN	TOTAL	SEASONAL NORM
<b>MARYLAND</b>														
<b>SOUTHERN EASTERN SHORE 01</b>														
ASSATEAGUE		0	0	105	413	926		660	567	255		0	M 2926	
PRINCESS ANNE	0		5					465			47		M 517	
SALISBURY	0	0	0	142	445	1001	976	605	559	198	61	0	3987	
SALISBURY FAA AP	0	0	8	218	507	1017	1027	685	616	226	74	0	4378	
SNOW HILL 4 N	0	0	3	173	477	998	963	616	569	204	66	0	4069	
<b>CENTRAL EASTERN SHORE 02</b>														
ROYAL OAK 2 SSW	0	0	1	175	466	970	1001	662	560				M 3835	
<b>LOWER SOUTHERN 03</b>														
MECHANICSVILLE 5 NE	0	0	22	272	571	1050	1059	742	636	291	101	2	4746	
SOLOMONS	0	0	0	113	438	962	973	642	587	228	39	0	3982	
<b>UPPER SOUTHERN 04</b>														
BALTIMORE WASH INTL AP	0	0	10	245	526	1003	1070	735	637	257	65	0	4548	
BELTSVILLE	0	0	13	218	542	1009	1070	763	632	276	75	0	4598	
DALECARLIA RSVR	0	0	5	226	566	1022	1057	768	593	224	42	2	4505	
LAUREL 3 W	0	0	4		500	1021	1066	721	624	230	41	0	M 4207	
MD SCI CTR BALTIMORE	0	0	0	147	425	937	981	661	550	179	17	0	3897	
NATL ARBORETUM DC	0	0	4	163	379	973	937	664	552	230	33	0	3935	
OXON HILL	0	0	2	196	514	993	1020	717	582	246	54	0	4324	
UPPER MARLBORO 3 NNW	0	0	10	221	555	1013	1058	757	632	274	68	1	4589	
<b>NORTHERN EASTERN SHORE 05</b>														
CHESTERTOWN	0	0	10	234	513	985	1085	772	615	273	68		M 4555	
<b>NORTHERN CENTRAL 06</b>														
ABERDEEN PHILLIPS FLD	0	0	15	213	553	1008	1100	763	670	298	78	0	4698	
CATOCTIN MTN PARK	3		42			1119	820	826			112	15	M 2937	
CONOWINGO DAM	0	0	6	246	568	1032	1133	853	681	309	83	0	4911	
CYLBURN	0	0	36	233	604	1061	1137	845	700		112	2	M 4730	
DAMASCUS 3 SSW	0	4	26	257	574	1088	1114	795	689	288	92	5	4932	
EMMITSBURG 2 SE	1	0	42	301	640	1074	1167	894	714	349	114	5	5301	
FREDERICK 2 NNE	0	0	14	238	615	1048	1114	837	667	314	72		M 4919	
MILLERS 4 NE	2	0	23	257	601	1101	1162	832	710	297	98	5	5088	
SMITHSBURG 2NW	8	0	60	303	706	917	1229	938	748	381	133	15	5438	
WESTMINSTER							1146		731	351	104	3	M 2335	
<b>APPALACHIAN MOUNTAIN 07</b>														
CUMBERLAND 2	0	0	18	222		1047	1101	759	655	214	60	2	M 4078	
FROSTBURG 2	19	12	116	397	766	1335	1331	986	884	468	183	49	6546	
SHARPSBURG 5 S	4	0	35	302	676	1119	1167	850	720	359	113	12	5357	
WILLIAMSPORT	0	0	15	227	585	1043	1205	899	729	339	83	2	5127	
<b>ALLEGHENY PLATEAU 08</b>														
OAKLAND 1 SE	21	16	148	476	802	1369	1321	961	881	456	191	53	6695	
SAVAGE RIVER DAM	14	3	112	390	744	1243	1275	926	793	446	167	26	6139	
<b>DELAWARE</b>														
<b>NORTHERN 01</b>														
BEAR 2 SW	0	0	11	275	564	1025	1121	802	690	276	83	2	4849	
WILMINGTON NEW CASTLE	0	0	5	247	549	1031	1132	808	698	291	76	0	4837	4888
WILMINGTON PORTER RES	0	0	6	260	551	1056	1149	810	720	323	82	0	4957	
<b>SOUTHERN 02</b>														
DOVER	0	0	2	177	514	1004	1044	670	601	215	57	0	4284	4212

## SNOWFALL AND SNOW ON GROUND (INCHES)

STATION	DAY OF MONTH																															
	01	02	03	04	05	06	07	08	09	10	11	12	13	14	15	16	17	18	19	20	21	22	23	24	25	26	27	28	29	30	31	
MARYLAND SOUTHERN EASTERN SHORE 01																																
DELAWARE NORTHERN 01																																

Snowfall: Includes snow and ice Values for NWS stations (J index note) are Mid-Mid (LST)

Snow on ground: Includes snow, sleet, ice, and hail Values for NWS stations (J index note) are observed at 12 UTC (GMT)

Water Equivalent: Given for NWS stations (J index note) only, when snow depth is 2 inches or more, and is measured at 18 UTC (GMT)

PAN EVAPORATION AND WIND

STATION		DAY OF MONTH																														TOTAL OR AVERAGE		
		01	02	03	04	05	06	07	08	09	10	11	12	13	14	15	16	17	18	19	20	21	22	23	24	25	26	27	28	29	30		31	
MARYLAND UPPER SOUTHERN 04 BELTSVILLE	WIND	35	28	28	21	14	16	20	21	-	72	20	36	53	26	34	20	27	23	22	22	22	21	38	30	40	23	34	38	27	67	-	878	
	EVAP	-	0.35	0.22	0.27	0.15	0.24	0.17	0.25	-	0.57	0.27	0.26	0.31	0.20	0.25	0.20	0.23	0.22	0.23	0.17	0.21	0.15	0.29	0.30	0.27	0.09	0.30	0.32	0.17	0.38	-	7.04	
	MAX	93	93	96	98	92	99	94	101	-	95	99	97	93	95	93	90	92	97	102	100	103	99	104	102	98	89	97	94	95	100	-	96.5	
	MIN	65	65	66	71	71	74	73	73	-	69	72	74	72	65	65	63	63	69	70	74	74	72	78	79	76	72	70	69	69	94	-	71.3	
UPPER MARLBORO 3 NNW	WIND	-	-	-	-	-	-	-	-	-	-	-	-	-	-	-	-	-	-	-	-	-	-	-	-	-	-	-	-	-	-	-	M	
	EVAP	0.25	-	-	-	0.82	0.25	0.15	0.28	-	-	0.79	0.25	0.29	0.19	0.24	-	-	0.70	0.24	0.19	0.22	0.27	-	-	0.73	0.12	0.33	0.27	-	-	-	6.58	
	MAX	96	96	98	100	95	100	94	102	93	98	98	98	100	96	95	89	95	98	101	100	104	104	106	105	100	98	101	98	96	103	100	98.6	
	MIN	63	65	66	70	72	74	71	72	70	71	71	72	74	67	67	64	65	69	71	74	75	77	79	78	77	73	70	69	70	75	73	71.1	
ALLEGHENY PLATEAU 08 SAVAGE RIVER DAM	WIND	-	-	-	-	-	-	-	-	-	-	-	-	-	-	-	-	-	-	-	-	-	-	-	-	-	-	-	-	-	-	-	M	
	EVAP	-	-	-	-	-	-	-	-	-	-	-	-	-	-	-	-	-	-	-	-	-	-	-	-	-	-	-	-	-	-	-	-	M
	MAX	-	-	-	-	-	-	-	-	-	-	-	-	-	-	-	-	-	-	-	-	-	-	-	-	-	-	-	-	-	-	-	-	-
	MIN	-	-	-	-	-	-	-	-	-	-	-	-	-	-	-	-	-	-	-	-	-	-	-	-	-	-	-	-	-	-	-	-	M

Evaporation: Is measured in hundreths of inches.

Wind: Is measured in miles.

Max and Min: The maximum and minimum temperatures (Fahrenheit) of the water in the evaporation pan.

STATION INDEX

STATION	INDEX NO.	DIVISION	COUNTY	LATITUDE	LONGITUDE	ELEVATION (IN FEET)	OBSERVATION TIME AND TABLES			
							LOCAL STD TIME			
							TEMP	PRECIP	EVAP	SPECIAL SEE (NOTES)
MARYLAND										
ABERDEEN PHILLIPS FLD R	0015	06	HARFORD	39 28	76 10W	57	07	07		CH
ASSATEAGUE	0335	01	WORCESTER	38 4	75 13W	10	24	24		H
BALTIMORE WASH INTL AP R	0465	04	ANNE ARUNDEL	39 10	76 41W	156	24	24		CHJ
BELTSVILLE R	0700	04	PRINCE GEORGE'S	39 2	76 56W	145	08	08	EV	CH
BRIGHTON DAM	1125	06	MONTGOMERY	39 11	77 0W	330		07		H
CATOCTIN MTN PARK	1530	06	FREDERICK	39 39	77 29W	1610	17	17		H
CHESTERTOWN	1750	05	KENT	39 13	76 3W	40	23	23		H
CONOWINGO DAM	2060	06	HARFORD	39 39	76 11W	40	07	07		H
CUMBERLAND 2	2282	07	ALLEGANY	39 39	78 45W	730	18	18		H
CYLBURN	2308	06	BALTIMORE	39 21	76 39W	235	08	08		H
DALECARLIA RSVR	2325	04	PRINCE GEORGE'S	38 56	77 6W	150	08	08		H
DAMASCUS 3 SSW	2336	06	MONTGOMERY	39 15	77 13W	700	22	22		H
EMMITSBURG 2 SE	2906	06	FREDERICK	39 41	77 17W	403	07	07		H
FREDERICK 2 NNE	3353	06	FREDERICK	39 26	77 24W	280	07	07		H
FROSTBURG 2	3415	07	ALLEGANY	39 40	78 56W	2170	07	07		H
LAUREL 3 W	5111	04	PRINCE GEORGE'S	39 5	76 54W	400	24	07		H
MD SCI CTR BALTIMORE R	5718	04	BALTIMORE (CITY)	39 17	76 37W	20	24	24		CH
MECHANICSVILLE 5 NE	5865	03	ST MARY'S	38 28	76 42W	100	07	07		H
MILLERS 4 NE R	5934	06	CARROLL	39 43	76 48W	860	18	18		CH
NATL ARBORETUM DC	6350	04	DISTRICT OF COLUMBIA	38 55	76 58W	50	07	07		H
OAKLAND 1 SE	6620	08	GARRETT	39 25	79 24W	2420	07	07		H
OXON HILL	6800	04	PRINCE GEORGE'S	38 47	76 60W	120	08	08		H
PRINCESS ANNE	7330	01	SOMERSET	38 13	75 41W	20	17	17		H
ROYAL OAK 2 SSW	7806	02	TALBOT	38 43	76 11W	10	17	17		H
SALISBURY 2N	8004	01	WICOMICO	38 24	75 36W	20	17	17		H
SALISBURY FAA AP	8005	01	WICOMICO	38 20	75 31W	48	24	24		H
SAVAGE RIVER DAM R	8065	08	GARRETT	39 31	79 8W	1495	08	08	EV	CH
SHARPSBURG 5 S	8207	07	WASHINGTON	39 24	77 43W	500	07	07		H
SMITHSBURG 2NW	8371	06	WASHINGTON	39 40	77 35W	670	08	08		H
SNOW HILL 4 N	8380	01	WORCESTER	38 14	75 23W	30	17	17		H
SOLOMONS	8405	03	CALVERT	38 19	76 27W	12	08	08		H
UPPER MARLBORO 3 NNW	9070	04	PRINCE GEORGE'S	38 51	76 46W	130	08	08	EV	H
WESTMINSTER	9440	06	CARROLL	39 34	76 59W	765	07	07		H
WILLIAMSPORT	9570	07	WASHINGTON	39 36	77 50W	360	06	06		H
DELAWARE										
BEAR 2 SW	1200	01	NEW CASTLE	39 36	75 44W	80	24	24		H
DOVER	2730	02	KENT	39 15	75 31W	30	16	16		H
LEWES	5320	02	SUSSEX	38 47	75 8W	15	08	08		CH
WILMINGTON NEW CASTLE R	9595	01	NEW CASTLE	39 40	75 36W	79	24	24		CHJ
WILMINGTON PORTER RES	9605	01	NEW CASTLE	39 46	75 32W	270	24	24		H

# REFERENCE NOTES

**STATION NAMES:** Name of the city, town or locality. Figures and letters following the station names indicate the distance in miles and direction from the post office or town community center.

**DIVISIONS:** Areas within a state of similar climatological characteristics. Division averages are calculated using data from stations that record both temperature and precipitation (i.e. not precipitation alone).

**NORMALS:** The average value of the meteorological element over a time period. Effective 1 January 2002, the averaging period is 1971 to 2000. The normals for National Weather Service localities have been adjusted so as to be representative for the current observation site.

**MONTHLY DEGREE DAY TOTALS:** One heating (cooling) degree day is accumulated for each whole degree that the daily mean temperature is below (above) 65 degrees Fahrenheit.

**PRECIPITATION:** Values shown in hundredths of inches are water equivalent totals, i.e., total of liquid and melted frozen precipitation. In the "Monthly Summarized Data" table the total snow and sleet values shown in tenths of inches are unmelted amounts. The max depth on ground values of snow and sleet shown in whole inches are cumulative unmelted amounts. The number of days with .10, .50, 1.00 or more refers to water equivalents.

**PRECIPITATION QUALITY CONTROL:** The NCDC quality control process may flag precipitation data that are spatially inconsistent, exceed climatological limits, or are inconsistent with prevailing weather patterns.

**TEMPERATURE:** Original temperature values are given in the "Daily Temperature" table. Summary temperature information (averages, departures, extremes, monthly degree day totals) is based on the values labeled MAX/MIN.

**WIND:** (As shown in the "Evaporation and Wind" table) the total wind movement in miles over the evaporation pan as determined by an anemometer recorder located 6-8 inches above the pan.

## SYMBOLS AND LETTERS USED IN THE STATION INDEX TABLE

- C Station is equipped with recording rain gage (R) but values in this bulletin are from a non-recording rain gage unless indicated by an R.
- G Observations appear in the "Soil Temperatures" table.
- H Observations appear in the "Snowfall and Snow on the Ground" table.
- J Station also published as a Local Climatological Data publication.
- VAR Observation time varies.
- SR Observation time near sunrise.
- SS Observation time near sunset.

## SYMBOLS AND LETTERS USED IN THE DATA TABLES

(DAILY DATA ARE FOR THE 24 HOURS IMMEDIATELY PRECEDING OBSERVATION TIME.)

**BLANK** Entries in the "Monthly Summarized Data" table indicate no record.

**BLANK** Entries in the "Daily Precipitation" and "Snowfall and Snow on the Ground" tables indicate zero.

**BLANK** Entries in the "Daily Temperature" table indicate a missing record

- No record. Data not recorded or not received in time for publication.

+ Precipitation or temperature extremes occurred on one or more previous dates during the month.

\* Rain gage not read. Precipitation is included in the amount following the asterisks. Time distribution may not be known. A \* preceding the monthly total indicates precipitation amount is being carried forward to next month's total, and may include amounts from the previous month(s).  
a As a subscript, indicates accumulated total.

A Amount of precipitation is the total of observer's entries for the current month. It may include precipitation that occurred during the previous month. Refer to earlier bulletin to determine date of last reading. (Hawaii stations)

F Monthly calculation flagged value. F is appended to average and/or total values computed which exclude one or more daily data values that have been flagged by the GHCN-Daily Dataset

M Insufficient or partial data. M is appended to average and/or total values computed with 1-9 daily values missing. M appears alone if 10 or more daily values are missing, (8 or more for wind and evaporation).

N Indicates snow fall or Snowdepth totals are computed with one or more missing days.

R Amounts from recording rain gage.

T Trace. An amount too small to measure.

**SEASONAL TABLES:** Monthly and seasonal snowfall and heating degree days for the 12 months ending with the June data are published in the July issue of this bulletin. Cooling degree days for the calendar year are published in the "Climatological Data Annual Summary."

Information concerning the history of changes in locations, exposure, etc. of substations is kept on file at the National Climatic Data Center. Historical information of regular National Weather Service Offices may be obtained from the "Local Climatological Data" annual publication. The contents of this publication may be reprinted or otherwise used freely, with proper credit to the National Climatic Data Center. The data are also available digitally.

Effective with the January 2011 Data-Month, COOP Observer Names are no longer included in the Monthly and Annual Climatological Data Publications. This information is not published to ensure the privacy of personal information pursuant to Section 208 of the E-Government Act of 2002 (44 USC 3601).

The GHCN-Daily Quality Control Flags shown below are displayed as superscripts with the data. For more Information on Global Historical Climatology Network - Daily and flags, see:  
<http://www.ncdc.noaa.gov/oa/climate/ghcn-daily/>  
and

Comprehensive Automated Quality Assurance of Daily Surface Observations.  
Durre, Imke, Matthew J. Menne, Byron E. Gleason, Tamara G. Houston, Russell S. Vose, 2010: J. Appl. Meteor. Climatol., 49, 16151633.  
doi: 10.1175/2010JAMC2375.1

Blank = Passed All checks

D = failed duplicate check

G = failed gap check

I = failed internal consistency check

K = failed streak/frequent-value check

L = failed check on length of multiday period

M = failed megaconsistency check

N = failed naught check

O = failed climatological outlier check

R = failed lagged range check

S = failed spatial consistency check

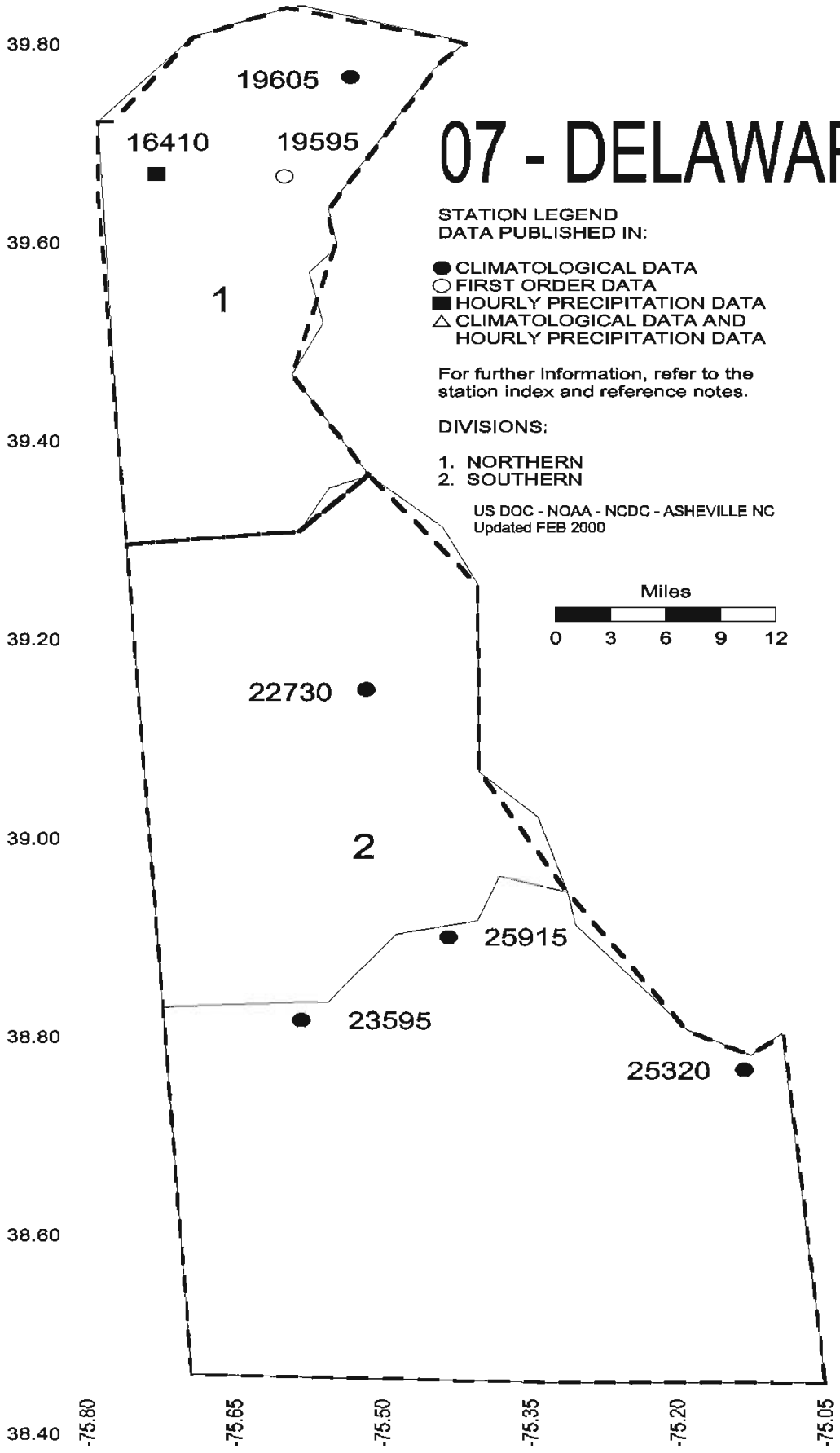
T = failed temporal consistency check

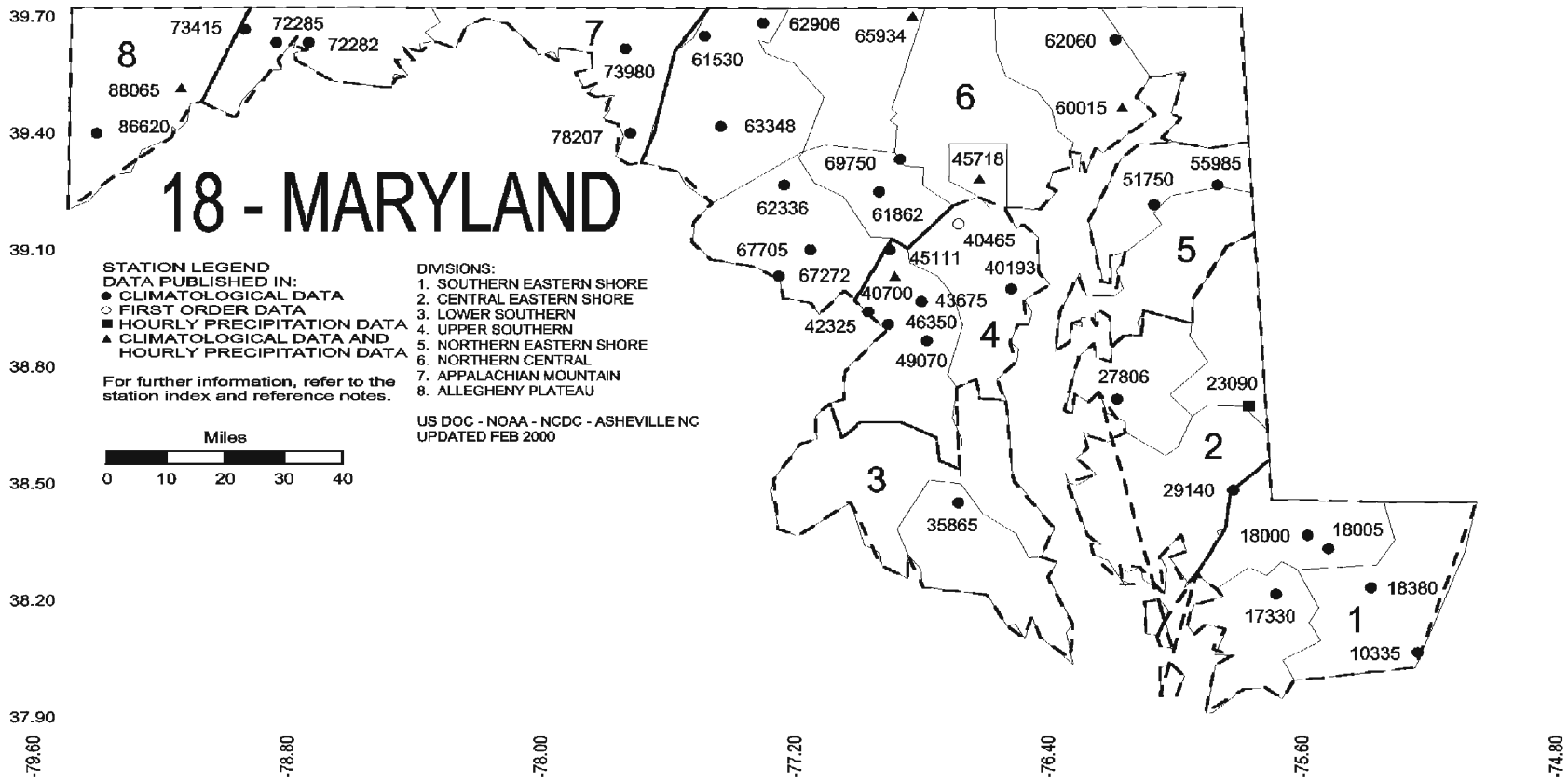
W = temperature too warm for snow

X = failed bounds check



# 07 - DELAWARE





NOAA\National Climatic Data Center  
Attn: User Engagement & Services Branch  
151 Patton Avenue  
Asheville, NC 28801-5001

PRSRT STD  
POSTAGE & FEES PAID  
United States Department of Commerce  
NOAA Permit No. G-19

**OFFICIAL BUSINESS**  
**PENALTY FOR PRIVATE USE \$300**  
**ADDRESS CORRECTION REQUESTED**

To change your address, please return a copy of the mailing label along with your new address to:

NOAA\National Climatic Data Center  
Attn: User Engagement & Services Branch  
151 Patton Avenue  
Asheville, NC 28801-5001

Customer Services Number: (828) 271-4800, option 2  
TDD : (828) 271-4010  
Fax number: (828) 271-4876

NCDC now offers an annual online subscription for the *Climatological Data* publication. When you purchase this subscription service, you will have **immediate online access** to all previous Climatological Data publications. Your subscription is valid for one year after purchase.

**The total cost is \$42 for online delivery (including back issues).**

To order this and other subscriptions online with your credit card, go to:

**<http://www.ncdc.noaa.gov/oa/mpp/>** and choose subscription.