



CLIMATOLOGICAL DATA MARYLAND AND DELAWARE



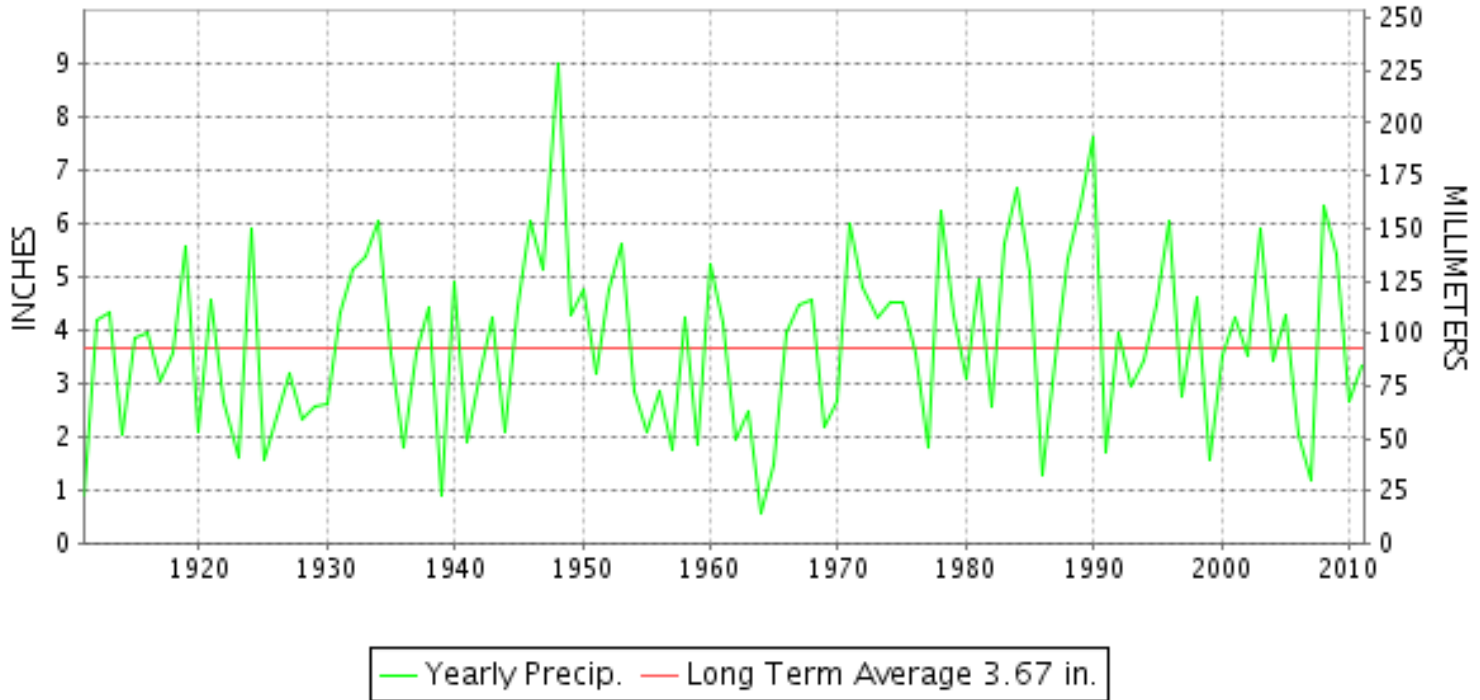
MAY 2011

VOLUME 115 NUMBER 05

ISSN 0145-0549

GHCND Ver: 2.91-upd-2012021008

MAY PRECIPITATION BY YEAR



TEMPERATURE AND PRECIPITATION EXTREMES

MARYLAND

HIGHEST TEMPERATURE	99	MAY 30	MD SCI CTR BALTIMORE
LOWEST TEMPERATURE	33	MAY 06+	OAKLAND 1 SE
GREATEST TOTAL PRECIPITATION	8.32		FROSTBURG 2
LEAST TOTAL PRECIPITATION	1.47		SNOW HILL 4 N
GREATEST 1 DAY PRECIPITATION	2.16	MAY 18	FROSTBURG 2

"I certify that this is an official publication of the National Oceanic and Atmospheric Administration (NOAA) It is compiled using information from weather observing sites supervised by NOAA/National Weather Service and received at the National Climatic Data Center(NCDC), Asheville, North Carolina 28801."

Director
National Climatic Data Center

noaa

National
Oceanic and
Atmospheric Administration

National
Environmental Satellite, Data
and Information Service

National
Climatic Data Center
Asheville, North Carolina

DELAWARE

HIGHEST TEMPERATURE	96	MAY 31	WILMINGTON NEW CASTLE
LOWEST TEMPERATURE	38	MAY 06	BEAR 2 SW
GREATEST TOTAL PRECIPITATION	4.58		WILMINGTON PORTER RES
LEAST TOTAL PRECIPITATION	3.23		WILMINGTON NEW CASTLE
GREATEST 1 DAY PRECIPITATION	1.42	MAY 19	DOVER

MONTHLY STATION AND DIVISION SUMMARY

STATION	TEMPERATURE (°F)										PRECIPITATION (IN)													
	AVERAGE MAXIMUM	AVERAGE MINIMUM	AVERAGE	DEPARTURE FROM NORMAL	HIGHEST	DATE	LOWEST	DATE	HEATING DEG. DAYS	COOLING DEG. DAYS	NO. OF DAYS				TOTAL	DEPARTURE FROM NORMAL	GREATEST 24 HOURS	DATE	ICE PELLETS, SNOW			NO OF DAYS		
											MAX		MIN						TOTAL	MAX DEPTH ON GROUND	DATE	10 OR MORE	50 OR MORE	1 00 OR MORE
											>=90	<=32	<=32	<=0										
MARYLAND SOUTHERN EASTERN SHORE 01																								
ASSATEAGUE	M	M	M											M					0.0	0				
PRINCESS ANNE	80.3M	54.7M	67.5M		94	30	40	05	47	107	4	0	0	0	M			0.0	0					
SALISBURY 2N	M	M	M											M				0.0	0					
SALISBURY FAA AP	78.5	56.2	67.4	4.0	95	31+	39	01	74	151	4	0	0	0	1.68	-2.19	0.70	04	0.0	0		5	1	0
SNOW HILL 4 N	79.9	56.3	68.1	3.3	97	30	39	01	66	167	7	0	0	0	1.47	-2.17	0.65	04	0.0	0		4	1	0
--DIVISIONAL DATA----->			67.7	4.5											1.58	-2.04								
CENTRAL EASTERN SHORE 02																								
ROYAL OAK 2 SSW	M	M	M											M				0.0	0					
--DIVISIONAL DATA----->			M											M										
LOWER SOUTHERN 03																								
MECHANICSVILLE 5 NE	74.5	54.3	64.4	0.5	92	31	42	06+	101	87	1	0	0	0	2.87	-1.35	0.83	14	N 0.0	0		6	3	0
SOLOMONS	74.8	61.0M	67.9M		92	31	46	05	39	126	2	0	0	0	3.41		1.54	16	0.0	0		7	3	1
--DIVISIONAL DATA----->			66.2	2.8											3.14	-1.00								
UPPER SOUTHERN 04																								
BALTIMORE WASH INTL AP	77.4	57.0	67.2	4.3	98	30	40	06	65	141	3	0	0	0	2.42	-1.47	0.62	04	0.0	0		7	1	0
BELTSVILLE	76.1	57.0	66.6	3.6	95	31	40	06	75	126	2	0	0	0	2.52	-2.02	0.50	17	0.0	0		9	1	0
DALECARLIA RSVR	77.6	58.4	68.0	3.1	93	31	42	05	42	143	3	0	0	0	2.61	-1.81	0.86	16	0.0	0		9	1	0
LAUREL 3 W	78.2	58.6	68.4	3.8	98	31	45	05+	41	152	3	0	0	0	M				0.0	0				
MD SCI CTR BALTIMORE	80.1	63.5	71.8		99	30	48	05	17	235	3	0	0	0	2.06		0.60	04	0.0	0		5	1	0
NATL ARBORETUM DC	79.5	57.7	68.6	4.5	94	31	44	06	33	152	2	0	0	0	2.15	-2.14	0.69	15	0.0	0		5	1	0
OXON HILL	77.2	57.4	67.3		96	31	43	06	54	133	2	0	0	0	1.98		0.57	15	N 0.0	0		6	1	0
UPPER MARLBORO 3 NNW	77.0	56.7	66.9	4.2	96	31	40	06	68	130	2	0	0	0	2.58	-1.73	0.72	15	0.0	0		7	2	0
--DIVISIONAL DATA----->			68.1	4.5											2.33	-2.11								
NORTHERN EASTERN SHORE 05																								
CHESTERTOWN	75.9	57.4F	66.7F	2.8	94	30	39	03	68	129	2	0	0	0	2.67	-1.42	1.37	15	0.0	0		6	2	1
--DIVISIONAL DATA----->			66.7	3.7											2.67	-1.48								
NORTHERN CENTRAL 06																								
ABERDEEN PHILLIPS FLD	75.3	56.7	66.0	2.1	94	31	43	06	78	113	2	0	0	0	FM 1.69		0.53	20	0.0	0		5	2	0
BRIGHTON DAM	M	M	M												2.96	-1.68	0.64	15	0.0	0		8	2	0
CATOCTIN MTN PARK	71.7M	52.7M	62.2M		87	26	40	05	112	40	0	0	0	0	FM 2.72		0.55	18	0.0	0		8	1	0
CONOWINGO DAM	76.4	54.9	65.7	3.1	94	31	40	06	83	109	2	0	0	0	3.15	-1.43	0.54	04	0.0	0		10	1	0
CYLBURN	72.2	55.6	63.9		88	31	41	06	112	86	0	0	0	0	FM 2.63		0.74	16	0.0	0		6	3	0
DAMASCUS 3 SSW	74.6	55.9	65.3		91	31	41	06	92	108	2	0	0	0	3.87		1.39	15	0.0	0		11	2	1

MONTHLY STATION AND DIVISION SUMMARY

STATION	TEMPERATURE (°F)											PRECIPITATION (IN)												
	AVERAGE MAXIMUM	AVERAGE MINIMUM	AVERAGE	DEPARTURE FROM NORMAL	HIGHEST	DATE	LOWEST	DATE	HEATING DEG. DAYS	COOLING DEG. DAYS	NO. OF DAYS				TOTAL	DEPARTURE FROM NORMAL	GREATEST 24 HOURS	DATE	ICE PELLETS, SNOW			NO OF DAYS		
											MAX		MIN						TOTAL	MAX DEPTH ON GROUND	DATE	10 OR MORE	50 OR MORE	1 00 OR MORE
											>=90	<=32	<=32	<=0										
EMMITSBURG 2 SE	73.1	54.2	63.7	1.5	91	31	39	06	114	79	1	0	0	0	3.73	-0.79	0.75	15	0.0	0		10	2	0
FREDERICK 2 NNE	76.4	55.8F	66.1F		95	31	41	06	72	122	2	0	0	0	2.54		0.59	15	0.0	0		10	1	0
MILLERS 4 NE	75.6	54.2	64.9	3.6	92	31	39	06	98	100	2	0	0	0	4.65	0.37	2.14	19	0.0	0		8	3	1
SMITHSBURG 2NW	74.1F	52.7F	63.4F		91	31	35	04	133	75	1	0	0	0	3.67		0.70	20	0.0	0		12	2	0
WESTMINSTER	74.7	55.0	64.9	1.8	93	31	40	06	104	105	2	0	0	0	3.38	-1.19	0.64	15	0.0	0		7	4	0
--DIVISIONAL DATA-----> APPALACHIAN MOUNTAIN 07			64.6	2.3											3.18	-1.44								
CUMBERLAND 2	78.8	55.0	66.9	4.7	95	31+	40	06	60	124	3	0	0	0	7.10	3.13	1.47	28	0.0	0		11	6	3
FROSTBURG 2	70.1	50.2	60.2	4.0	86	30	35	06	183	38	0	0	0	0	8.32	3.56	2.16	18	0.0	0		9	6	2
SHARPSBURG 5 S	75.0	52.5	63.8		93	31	36	06+	113	82	2	0	0	0	5.45		1.26	17	0.0	0		8	3	2
WILLIAMSPORT	75.6	53.8	64.7		95	31	40	07	83	83	2	0	0	0	5.74		1.20	16	N 0.0	0		12	5	2
--DIVISIONAL DATA-----> ALLEGHENY PLATEAU 08			63.9	3.6											6.65	2.44								
OAKLAND 1 SE	70.5	49.0	59.8	3.1	87	31	33	06+	191	35	0	0	0	0	5.58	0.74	1.75	18	0.0	0		11	3	1
SAVAGE RIVER DAM	70.4	51.2F	60.8F		87	31	36	05	167	43	0	0	0	0	7.26	3.02	1.59	18	0.0	0		10	6	4
--DIVISIONAL DATA-----> DELAWARE NORTHERN 01			60.3	3.8											6.42	1.88								
BEAR 2 SW	76.3	55.5	65.9		94	31	38	06	83	117	3	0	0	0	3.63		1.28	19	0.0	0		7	3	1
WILMINGTON NEW CASTLE	76.0	56.5	66.3	3.8	96	31	42	06	76	122	2	0	0	0	3.23	-0.92	0.97	15	0.0	0		8	3	0
WILMINGTON PORTER RES	74.8	56.5	65.7		92	31	45	05	82	107	2	0	0	0	4.58		1.39	15	0.0	0		10	4	1
--DIVISIONAL DATA-----> SOUTHERN 02			66.0	3.4											3.81	-0.61								
DOVER	78.5	57.6	68.1	3.8	93	30	46	06+	57	159	5	0	0	0	3.37	-0.92	1.42	19	0.0	0		7	2	1
LEWES	M	M	M												M				N 0.0	0				
--DIVISIONAL DATA----->			68.1	5.2											3.37	-0.75								

DAILY PRECIPITATION (INCHES)

STATION	TOTAL	DAY OF MONTH																															
		01	02	03	04	05	06	07	08	09	10	11	12	13	14	15	16	17	18	19	20	21	22	23	24	25	26	27	28	29	30	31	
MARYLAND																																	
SOUTHERN																																	
EASTERN SHORE 01																																	
ASSATEAGUE	M	-	-	-	-	-	-	-	-	-	-	-	-	-	-	-	-	-	-	-	-	-	-	-	-	-	-	-	-	-	-	-	
PRINCESS ANNE	M	-	-	-	0.85	-	-	-	-	-	-	-	-	-	-	-	0.41	0.05	-	-	-	-	-	0.42 ^L	-	-	-	-	-	-	-	-	
SALISBURY 2N	M	-	-	-	-	-	-	-	-	-	-	-	-	-	-	-	-	-	-	-	-	-	-	-	-	-	-	-	-	-	-	-	
SALISBURY FAA AP	1.68	T	-	-	0.70	-	T	-	-	-	-	-	-	0.44	0.01	-	0.27	0.10	T	0.01	-	-	-	0.11	-	0.02	-	-	0.02	-	-		
SNOW HILL 4 N	1.47	-	T	-	0.65	0.02	-	T	-	-	-	-	-	T	0.19	-	0.40	0.15	-	-	-	-	0.04	0.02	-	-	-	-	-	-	-		
CENTRAL																																	
EASTERN SHORE 02																																	
FEDERALSBURG R	M	-	-	-	-	-	-	-	-	-	-	-	-	-	-	-	-	-	-	-	-	-	-	-	-	-	-	-	-	-	-	-	
ROYAL OAK 2 SSW	M	-	-	-	-	-	-	-	-	-	-	-	-	-	-	-	-	-	-	-	-	-	-	-	-	-	-	-	-	-	-	-	
LOWER SOUTHERN 03																																	
MECHANICSVILLE 5 NE	2.87	-	T	-	0.56	0.28	-	T	T	0.02	-	-	0.21	0.83	0.03	0.08	0.65	0.03	-	-	-	-	T	0.01	0.17	-	-	-	-	-	-		
SOLOMONS	3.41	-	-	-	0.55	0.19	-	-	T	-	-	-	0.01	0.04	0.57	1.54	0.13	0.17	0.17	0.02	-	-	0.02	-	-	-	-	-	-	-	-		
UPPER SOUTHERN 04																																	
BALTIMORE WASH INTL AP	2.42	0.06	-	0.02	0.62	-	0.13	T	-	-	-	-	T	0.38	0.39	-	0.37	0.25	0.11	T	-	-	0.02	0.02	-	-	0.05	-	-	-	-		
BELTSVILLE	2.52	-	0.04	-	0.37	0.13	-	0.10	-	-	-	-	T	T	0.31	0.36	0.50	0.11	0.36	0.16	-	-	0.03	-	0.03	-	0.02	-	-	-	-		
DALECARLIA RSVR	2.61	-	0.02	-	0.36	0.15	-	-	-	-	-	-	-	-	0.39	0.86	0.23	0.12	0.22	0.12	-	-	0.10	-	0.03	-	0.01	-	-	-	-		
LAUREL 3 W	M	0.06	-	-	0.51	-	0.08	-	-	0.02	-	-	-	-	0.14	0.53	0.05	0.08	0.28	0.23	0.10	-	-	-	0.06	-	0.04	-	-	-	-		
MD SCI CTR BALTIMORE R	2.06	0.08	-	-	0.60	-	0.05	-	-	-	-	-	-	0.47	0.44	-	0.07	0.16	0.10	-	-	-	0.01	-	-	-	0.07	0.01	-	-	-		
NATL ARBORETUM DC	2.15	-	0.02	-	0.42	0.17	-	-	-	-	-	-	-	T	0.02	0.69	0.07	0.37	0.09	0.17	0.08	T	-	0.03	T	0.01	-	-	-	-	-		
OXON HILL	1.98	-	0.03	-	0.47	0.29	-	-	-	0.01	-	T	-	T	T	0.57	-	0.01	0.05	0.12	0.17	T	-	0.07	T	0.17	-	-	-	-	-		
UPPER MARLBORO 3 NNW	2.58	-	0.03	-	0.52	0.35	-	-	-	-	-	-	-	-	0.10	0.72	-	0.16	0.25	0.30	0.08	-	-	0.02	-	-	-	-	-	-	-		
NORTHERN																																	
EASTERN SHORE 05																																	
CHESTERTOWN	2.67	0.06	-	-	0.68	-	0.15	-	-	-	-	-	-	-	0.11	1.37	-	T	0.10	0.06	0.14	-	-	-	T	-	-	-	-	-	-		
NORTHERN CENTRAL 06																																	
ABERDEEN PHILLIPS FLD	FM 1.69	-	0.01	-	0.52	0.23	-	-	0.29 ^L	-	-	-	-	-	0.00 ^L	0.56 ^L	0.05	0.12	0.08	0.53	0.11	-	T	-	T	-	0.04	-	-	-	-		
BRIGHTON DAM	2.96	0.08	-	-	0.55	-	0.05	-	-	-	-	-	-	0.01	0.64	0.13	0.12	0.45	0.40	0.20	-	-	0.07	0.07	-	0.04	0.15	-	-	-	-		
CATOCTIN MTN PARK	FM 2.72	0.01	-	0.01	0.01	-	0.01	-	0.01	-	0.01	-	0.01	0.28	0.31	0.36	0.31	0.55	0.27	0.02	-	0.06	0.04 ^L	0.00 ^L	0.01	0.32	0.16	-	-	-	-		
CONOWINGO DAM	3.15	-	-	-	0.54	0.32	-	0.26	-	-	-	-	-	-	0.34	0.23	0.12	0.33	0.43	0.38	0.20	-	-	-	-	-	-	-	-	-	-		
CYLBURN	FM 2.63	-	-	0.14	-	0.61	-	0.08	-	-	-	-	-	-	T	-	0.74	0.02	0.37	0.15	0.52	-	-	-	0.01 ^L	-	-	-	-	-	-		
DAMASCUS 3 SSW	3.87	0.11	-	T	0.64	-	0.22	-	T	-	-	-	T	0.12	1.39	0.01	0.27	0.26	0.13	T	-	-	0.22	0.33	-	0.17	T	-	-	-	-		
EMMITSBURG 2 SE	3.73	-	0.11	-	0.50	0.17	-	0.01	-	-	-	-	-	0.03	0.75	0.40	0.39	0.43	0.42	0.21	0.01	-	0.02	0.04	-	T	0.01	0.23	-	-	-		
FREDERICK 2 NNE	2.54	-	0.10	-	0.43	0.16	-	0.03	-	-	-	-	T	0.02	0.59	0.26	0.07	0.15	0.26	0.18	0.03	-	0.11	0.11	-	T	0.03	0.01	-	-	-		
MILLERS 4 NE	4.65	0.15	0.01	0.02	0.51	-	-	0.14	0.02	-	-	-	T	0.02	0.21	0.02	0.32	0.68	2.14	0.03	-	-	0.32	-	-	T	0.06	T	-	-	-		
SMITHSBURG 2NW	3.67	0.15	-	0.45	0.11	-	-	-	-	-	-	-	-	0.15	0.20	0.26	0.14	0.35	0.30	0.70	-	-	0.07	-	-	0.54	0.05	0.20	-	-	-		
WESTMINSTER	3.38	-	0.08	-	0.33	0.11	0.02	-	-	-	-	-	T	0.05	0.64	0.53	0.34	0.57	0.55	0.07	T	-	0.06	-	-	-	0.03	-	-	-	-		
APPALACHIAN																																	
MOUNTAIN 07																																	
CUMBERLAND 2	7.10	0.04	0.04	-	0.60	T	-	-	T	-	-	-	0.17	0.52	0.21	0.15	0.88	1.05	0.49	0.02	-	-	0.36	-	-	-	1.10	1.47	-	-	-		

DAILY PRECIPITATION (INCHES)

STATION	TOTAL	DAY OF MONTH																															
		01	02	03	04	05	06	07	08	09	10	11	12	13	14	15	16	17	18	19	20	21	22	23	24	25	26	27	28	29	30	31	
FROSTBURG 2	8.32	0.03	0.09		0.36	0.05							0.31	0.06	0.93	0.03	0.75	2.16	0.93	0.06			0.22	0.01			0.55	1.78					
SHARPSBURG 5 S	5.45		0.12		0.49	0.14	0.04						0.03	0.01	*	1.23 _a	1.26	1.10	0.67	0.03			0.02	0.11			0.01	0.19					
WILLIAMSPORT	5.74		0.15		0.53	0.14			0.10				0.07	0.10	0.42	1.20	0.68	1.02	0.40	0.03			0.11	0.04			0.73	0.02					
ALLEGHENY PLATEAU 08																																	
OAKLAND 1 SE	5.58	0.02	0.05		0.32	0.06			0.12		0.06		0.31	0.80	0.40	0.10	0.22	1.75	0.50	0.03				0.05			0.48	0.31					
SAVAGE RIVER DAM R	7.26	0.05	T		0.25			T					0.13	0.69	1.06	T	0.46	1.59	1.05				0.15	T			0.65	1.18					
DELAWARE																																	
NORTHERN 01																																	
BEAR 2 SW	3.63	T		T	0.58		0.32	0.01						0.33	0.32	T	0.57	0.05	1.28	0.16			T	0.01					T				
NEWARK UNIV FARM R	M	-	-	-	-	-	-	-	-	-	-	-	-	-	-	-	-	-	-	-	-	-	-	-	-	-	-	-	-	-	-	-	
WILMINGTON NEW CASTLE R	3.23	T		T	0.46		0.22	T						0.67	0.97	0.10	0.52	T	0.12	0.16		T	0.01	T									
WILMINGTON PORTER RES	4.58				0.51		0.10							0.14	1.39	0.45	0.74	0.10	0.20	0.82				0.13									
SOUTHERN 02																																	
DOVER	3.37				0.66		0.01	0.02								0.23	0.14	0.02	1.42	0.14				0.31	0.03	0.02			0.37				
LEWES	M	-	-	-	-	-	-	-	-	-	-	-	-	-	-	-	-	-	-	-	-	-	-	-	-	-	-	-	-	-	-	-	-

DAILY TEMPERATURES (°F)

STATION	OB. TIME	MAX/MIN	DAY OF MONTH																															AVERAGE	
			01	02	03	04	05	06	07	08	09	10	11	12	13	14	15	16	17	18	19	20	21	22	23	24	25	26	27	28	29	30	31		
MARYLAND SOUTHERN EASTERN SHORE 01 ASSATEAGUE	24	MAX MIN																																	M M
PRINCESS ANNE	17	MAX MIN		78 50	81 55	82 45	66 40	70 46		73 46	75 48	73 45	75 43	73 48		80 60	81 55	77 57	77 48	75 55		85 65	89 66	90 63	91 62	89 68				94 68	93 70	80.3 54.7			
SALISBURY 2N	17	MAX MIN																																M M	
SALISBURY FAA AP	24	MAX MIN	66 39	78 50	83 61	68 48	67 47	71 43	73 51	73 46	75 45	72 44	75 44	70 49	67 56	80 64	80 60	74 62	73 59	76 54	74 55	81 56	78 57	84 64	90 72	87 66	92 66	86 67	85 64	89 67	95 69	95 70	78.5 56.2		
SNOW HILL 4 N	17	MAX MIN	69 39	78 52	84 58	79 52	67 44	73 45	75 51	74 45	76 45	73 43	74 42	71 48	69 55	80 64	80 63	73 62	73 61	77 54	78 52	80 57	79 57	84 65	92 71	90 67	94 63	92 70	86 68	90 69	97 71	96 70	79.9 56.3		
CENTRAL EASTERN SHORE 02 ROYAL OAK 2 SSW	17	MAX MIN																																M M	
LOWER SOUTHERN 03 MECHANICSVILLE 5 NE	07	MAX MIN	68 43	68 43	79 58	81 47	58 42	66 42	70 46	72 46	71 49	71 46	71 45	72 48	73 47	64 58	66 58	73 57	75 57	70 61	69 55	72 54	70 53	78 53	80 56	82 67	85 63	83 63	84 66	84 62	84 62	84 66	79 66	92 69	74.5 54.3
SOLOMONS	08	MAX MIN	64 52	68 58	79 64	83 49	59 46	66 51	71 52	70 55	71 56	71 54	71 55	70 61	69 61	68 64	78 60	75 63	71 64	69 60	76 60	71 61	76 64	77 67	84 69	87 69	80 72	91 68	84 71	80 73	83 75	92 75	74.8 61.0		
UPPER SOUTHERN 04 BALTIMORE WASH INTL AP	24	MAX MIN	62 47	74 54	82 57	62 46	68 43	72 40	72 47	75 47	74 49	74 55	79 51	68 58	65 59	77 62	77 58	73 63	71 63	73 55	72 51	82 53	76 59	84 64	86 71	85 63	91 66	85 66	84 64	85 68	85 68	98 70	97 72	77.4 57.0	
BELTSVILLE	08	MAX MIN	67 46	61 51	78 57	80 48	59 46	68 40	70 46	71 48	73 48	72 55	75 50	76 60	65 60	66 58	78 63	76 63	74 63	72 56	72 52	71 53	81 58	81 65	84 68	87 63	86 66	92 69	85 63	84 66	85 66	95 68	95 71	76.1 57.0	
DALECARLIA RSVR	08	MAX MIN	68 50	62 53	80 62	82 47	82 42	68 51	71 49	72 51	73 50	74 48	75 53	76 53	77 61	68 60	78 60	77 62	70 63	73 56	74 54	70 59	82 54	80 54	85 69	84 63	87 68	92 71	85 68	84 70	92 69	85 69	86 70	93 70	77.6 58.4
LAUREL 3 W	24	MAX MIN	60 50	78 53	81 61	81 45	68 45	71 47	72 50	75 52	74 56	77 55	77 51	76 57	67 57	64 61	78 59	77 61	74 61	71 57	73 55	72 57	81 62	80 63	84 70	85 67	86 67	92 67	85 63	84 68	85 68	97 72	98 76	78.2 58.6	
MD SCI CTR BALTIMORE	24	MAX MIN	65 57	75 59	86 64	67 50	71 48	75 51	76 55	77 57	75 60	75 58	77 58	79 58	77 61	80 62	80 64	76 65	74 66	77 60	75 58	84 63	78 67	88 75	89 72	87 75	96 72	89 70	88 73	89 76	99 81	97 81	80.1 63.5		
NATL ARBORETUM DC	07	MAX MIN	73 49	65 51	81 57	82 47	65 46	72 44	75 51	77 49	79 50	78 47	79 55	80 53	80 58	68 61	69 59	81 60	82 63	77 57	77 54	75 55	87 60	86 66	83 66	84 65	86 67	86 60	84 66	89 68	84 63	89 67	94 72	79.5 57.7	
OXON HILL	08	MAX MIN	68 47	62 52	81 55	83 48	61 46	69 43	74 45	73 52	74 53	75 51	77 54	77 51	64 58	67 59	78 60	79 61	74 62	74 56	72 55	72 59	82 58	82 65	84 64	86 68	86 68	92 63	86 63	86 67	84 67	85 70	96 72	77.2 57.4	
UPPER MARLBORO 3 NNW	08	MAX MIN	67 44	62 51	80 58	82 47	59 44	68 40	72 46	73 49	75 48	73 53	76 49	75 56	67 60	78 58	78 62	74 62	72 59	75 53	73 55	81 58	83 65	85 67	88 65	86 68	91 67	87 63	85 67	84 69	96 70	97 70	77.0 56.7		
NORTHERN EASTERN SHORE 05 CHESTERTOWN	23	MAX	62	73	80	71	62	70	71	73	76	69	72	72	63	76	77	71	70	74	72	79	72	81	86	84	88	84	84	83	94	93	75.9		

DAILY TEMPERATURES (°F)

STATION	OB. TIME	MAX/MIN	DAY OF MONTH																															AVERAGE
			01	02	03	04	05	06	07	08	09	10	11	12	13	14	15	16	17	18	19	20	21	22	23	24	25	26	27	28	29	30	31	
NORTHERN CENTRAL 06 ABERDEEN PHILLIPS FLD		MIN	45	63 ¹	39	53	46	44	49	48	50	47	49	55	55	56	61	61	62	62	57	57	55	60	62	69	67	68	68	66	68	71	71	57.4
	07	MAX	65	62	73	82	58	68	70	72	73	72	76	74	74	71	62	76	77	72	72	72	70	81	71	83	85	85	90	86	84	84	94	75.3
CATOCTIN MTN PARK		MIN	46	47	56	49	46	43	44	46	49	52	51	50	51	57	58	60	63	63	62	54	55	58	63	65	65	67	67	64	66	70	72	56.7
	17	MAX	61	73	79	75	63	66	66	71	69	73	72	73	69	59	73	70	69	67	66	64	78	76	77	78	83	87	80					71.7
CONOWINGO DAM		MIN	47	49	57	41	40	41	47	46	47	43	52	51	57	56	58	55	57	57	50	50	53	58	61	66	59	65	59					52.7
	07	MAX	66	66	71	81	59	67	70	73	74	74	77	77	75	70	64	76	77	77	77	77	77	71	81	73	80	87	87	90	85	85	86	94
CYLBURN		MIN	43	44	55	48	44	40	42	48	48	46	48	48	47	58	58	60	61	61	59	54	56	60	60	63	63	63	65	65	55	70	71	54.9
	08	MAX	69	61	63	80	54	65	70	69	71	69	71	71	73	65	63	74	74	67	66	67	67	75	73	81	81	81	87	82	80	82	88	72.2
DAMASCUS 3 SSW		MIN	47	52	47	45	43	41	43	46	50	48	51	51	55	55	57	58	60	60	59	53	54	59	62	64	64	67	65	63	66	69	71	55.6
	22	MAX	58	74	80	67	66	71	71	72	71	71	72	75	62	62	76	76	73	68	66	68	78	75	81	80	84	89	82	81	84	90	91	74.6
EMMITSBURG 2 SE		MIN	49	51	60	44	43	41	46	48	49	47	47	56	58	57	60	57	57	61	50	50	55	59	63	66	61	66	66	62	66	69	70	55.9
	07	MAX	66	58	73	80	58	66	69	69	71	71	73	73	62	63	73	74	70	69	66	68	80	78	79	81	81	87	81	80	84	91	73.1	
FREDERICK 2 NNE		MIN	47	48	51	45	44	39	41	41	47	44	48	53	54	57	58	57	57	61	54	52	54	57	59	63	64	63	61	61	64	68	69	54.2
	07	MAX	68	61	77	83	60	68	72	72	74	74	76	77	78	63	65	78	77	71	72	71	71	82	82	82	84	86	92	85	84	88	95	76.4
MILLERS 4 NE		MIN	47	49	52	46	45	41	43	47	48	46	56 ¹	54	55	59	59	59	60	60	55	54	54	58	65 ¹	67	64	65	64	64	65	69	70	55.8
	18	MAX	64	72	80	77	66	70	69	70	69	73	74	76	73	63	77	74	70	65	68	68	79	77	82	82	83	87	86	82	84	91	92	75.6
SMITHSBURG 2NW		MIN	45	50	57	43	42	39	42	43	49	46	47	49	53	55	58	56	58	58	53	51	55	57	60	65	60	65	62	61	65	69	68	54.2
	08	MAX	64	74	81	56 ¹	64	69	65	62	69	70	73	75	75	64	65	71	74	74	69	69	67	79	79	80	80	82	88	84	85	81	91	74.1
WESTMINSTER		MIN	42	52	43	35	36	40 ¹	42 ¹	46	46	37	54 ¹	50	50	58	58	55	56	56	53	49	49	55	55	64	58	61	60	60	68 ¹	73	65	52.7
	07	MAX	64	60	75	81	56	66	71	70	71	69	74	78	79	64	61	77	76	70	68	71	70	80	77	83	85	85	91	84	83	85	93	74.7
APPALACHIAN MOUNTAIN 07 CUMBERLAND 2		MIN	45	48	53	45	42	40	43	45	47	44	49	52	55	55	58	58	59	60	57	51	54	59	62	63	63	67	65	64	65	69	69	55.0
	18	MAX	68	75	85	80	68	72	71	72	79	77	81	81	79	70	72	73	64	72	69	73	84	84	85	85	86	89	81	85	92	95	95	78.8
FROSTBURG 2		MIN	49	51	58	44	42	40	50	47	45	45	52	53	63	62	62	55	58	53	52	50	53	56	64	64	60	60	61	61	64	65	66	55.0
	07	MAX	66	55	76	78	50	60	66	65	63	69	70	75	75	67	66	68	63	58	65	64	66	76	74	78	72	80	84	73	79	86	85	70.1
SHARPSBURG 5 S		MIN	39	46	50	38	36	35	39	44	41	42	44	49	56	58	56	51	53	53	48	48	48	54	58	58	58	59	57	55	56	61	65	50.2
	07	MAX	66	61	75	83	59	67	70	71	72	72	74	76	76	64	65	75	77	67	68	71	69	81	80	82	82	85	90	83	83	87	93	75.0
WILLIAMSPORT		MIN	45	48	53	44	36	36	40	44	43	40	42	53	54	59	59	58	58	59	55	49	50	51	56	63	58	60	60	61	62	66	66	52.5
	06	MAX	68	60	74	82	59	68	78	76	72	74	75	78	70	65	65	74	77	68	72	73	71	81	79	82	82	84	90	82	82	87	95	75.6
ALLEGHENY PLATEAU 08 OAKLAND 1 SE		MIN	51	51	51	45	45	41	40	46	46	44	44	51	53	61	60	58	58	58	55	53	51	51	56	64	61	61	61	61	62	64	66	53.8
	07	MAX	66	59	76	78	50	60	63	62	62	71	73	74	79	71	71	64	62	59	66	60	66	76	80	76	73	82	83	70	80	85	87	70.5
SAVAGE RIVER DAM		MIN	38	50	54	39	33	33	37	41	34	38	48	49	51	55	57	50	50	51	49	49	47	50	54	57	58	60	57	57	57	59	58	49.0
	08	MAX	67	56	77	78	52	60	64	63	65	72	69	74	75	66	69	67	66	59	66	54	69	79	80	77	74	80	83	72	77	84	87	70.4
DELAWARE NORTHERN 01 BEAR 2 SW		MIN	43	47	52	42	36	37	38	44	40	41	44	50	55 ¹	59	59	54	55	54	50	52	51	52	55	59	59	60	59	59	60	61	63	51.2
	24	MAX	66	71	82	67	67	71	72	73	72	76	73	74	69	62	78	76	70	72	72	69	80	71	80	85	84	90	86	84	86	93	94	76.3
		MIN	43	52	55	48	43	38	47	47	47	45	46	47	53	58	61	60	60	62	57	53	52	59	62	69	63	64	65	64	64	69	69	55.5

DAILY TEMPERATURES (°F)

STATION	OB. TIME	MAX/MIN	DAY OF MONTH																															AVERAGE
			01	02	03	04	05	06	07	08	09	10	11	12	13	14	15	16	17	18	19	20	21	22	23	24	25	26	27	28	29	30	31	
WILMINGTON NEW CASTLE	24	MAX	68	70	82	66	67	70	71	73	73	76	75	74	68	62	74	75	70	70	72	67	81	69	80	86	84	89	85	82	86	95	96	76.0
		MIN	44	55	57	47	43	42	46	46	49	48	49	51	52	59	62	59	59	61	56	54	54	60	60	67	63	66	66	67	68	70	70	56.5
WILMINGTON PORTER RES	24	MAX	69	71	81	66	65	71	71	71	70	72	72	74	69	61	74	73	67	68	74	65	77	67	78	84	84	88	85	83	86	90	92	74.8
		MIN	46	54	56	46	45	47	47	49	54	52	48	52	51	57	59	60	57	59	57	53	53	58	58	67	64	63	67	66	67	67	56.5	
SOUTHERN 02																																		
DOVER	16	MAX	66	73	82	82	69	71	72	72	72	74	73	73	65	81	80	75	71	71	71	79	79	84	89	88	92	92	90	88	93	92	78.5	
		MIN	46	53	61	49	46	46	50	47	49	48	50	48	54	58	62	60	62	59	54	56	54	59	63	71	67	70	69	66	68	72	57.6	
LEWES	08	MAX																								90	80	94				92	M	
		MIN																								72	67	70				68	M	

SNOWFALL AND SNOW ON GROUND (INCHES)

STATION	DAY OF MONTH																															
	01	02	03	04	05	06	07	08	09	10	11	12	13	14	15	16	17	18	19	20	21	22	23	24	25	26	27	28	29	30	31	
MARYLAND SOUTHERN EASTERN SHORE 01																																
DELAWARE NORTHERN 01																																

Snowfall: Includes snow and ice Values for NWS stations (J index note) are Mid-Mid (LST)

Snow on ground: Includes snow, sleet, ice, and hail Values for NWS stations (J index note) are observed at 12 UTC (GMT)

Water Equivalent: Given for NWS stations (J index note) only, when snow depth is 2 inches or more, and is measured at 18 UTC (GMT)

PAN EVAPORATION AND WIND

STATION		DAY OF MONTH																															TOTAL OR AVERAGE
		01	02	03	04	05	06	07	08	09	10	11	12	13	14	15	16	17	18	19	20	21	22	23	24	25	26	27	28	29	30	31	
MARYLAND UPPER SOUTHERN 04 BELTSVILLE	WIND	46	13	36	116	88	72	59	36	34	62	33	41	41	52	35	43	37	80	33	34	48	42	53	68	45	42	92	46	-	118	36	1581
	EVAP	-	0.02	0.10	0.28	0.12	0.26	0.17	0.17	0.16	0.25	0.19	0.22	0.17	0.04	0.00	0.27	0.14	0.12	0.09	0.12	0.13	0.24	0.17	0.21	0.21	0.24	0.32	0.24	-	0.43	0.23	5.31
	MAX	63	63	82	86	65	75	78	75	80	80	83	87	85	65	79	88	85	78	77	76	76	88	85	91	89	94	95	90	-	94	97	82.2
	MIN	48	51	53	52	42	43	44	54	54	51	52	55	56	59	59	61	62	63	61	57	58	59	64	67	68	68	69	64	-	64	64	57.4
UPPER MARLBORO 3 NNW	WIND	-	-	-	-	-	-	-	-	-	-	-	-	-	-	-	-	-	-	-	-	-	-	-	-	-	-	-	-	-	-	-	M
	EVAP	-	0.03	0.14	-	0.37	0.21	-	-	0.53	0.20	0.18	0.21	0.18	-	-	0.18	0.02	0.32	0.09	0.12	-	0.30	0.15	0.18	0.16	0.22	0.24	-	-	0.56	-	4.59
	MAX	62	62	84	85	62	74	77	80	83	84	84	90	88	69	69	88	92	78	79	82	81	92	88	92	91	98	97	94	94	96	102	84.4
	MIN	41	54	55	54	44	45	49	53	56	52	53	55	56	59	60	64	64	63	64	59	59	60	66	67	69	68	68	65	66	70	72	59.0
ALLEGHENY PLATEAU 08 SAVAGE RIVER DAM	WIND	-	-	-	-	-	-	-	-	-	-	-	-	-	-	-	-	-	-	-	-	-	-	-	-	-	-	-	-	-	-	-	M
	EVAP	-	-	-	-	-	-	-	-	-	-	-	-	-	-	-	-	-	-	-	-	-	-	-	-	-	-	-	-	-	-	-	M
	MAX	-	-	-	-	-	-	-	-	-	-	-	-	-	-	-	-	-	-	-	-	-	-	-	-	-	-	-	-	-	-	-	-
	MIN	-	-	-	-	-	-	-	-	-	-	-	-	-	-	-	-	-	-	-	-	-	-	-	-	-	-	-	-	-	-	-	-

Evaporation: Is measured in hundredths of inches.

Wind: Is measured in miles.

Max and Min: The maximum and minimum temperatures (Fahrenheit) of the water in the evaporation pan.

STATION INDEX

STATION	INDEX NO.	DIVISION	COUNTY	LATITUDE	LONGITUDE	ELEVATION (IN FEET)	OBSERVATION TIME AND TABLES			
							LOCAL STD TIME			
							TEMP	PRECIP	EVAP	SPECIAL SEE (NOTES)
MARYLAND										
ABERDEEN PHILLIPS FLD R	0015	06	HARFORD	39 28	76 10W	57	07	07		CH
ASSATEAGUE	0335	01	WORCESTER	38 4	75 13W	10	24	24		H
BALTIMORE WASH INTL AP R	0465	04	ANNE ARUNDEL	39 10	76 41W	156	24	24		CHJ
BELTSVILLE R	0700	04	PRINCE GEORGE'S	39 2	76 56W	145	08	08	EV	CH
BRIGHTON DAM	1125	06	MONTGOMERY	39 11	77 0W	330		07		H
CATOCTIN MTN PARK	1530	06	FREDERICK	39 39	77 29W	1610	17	17		H
CHESTERTOWN	1750	05	KENT	39 13	76 3W	40	23	23		H
CONOWINGO DAM	2060	06	HARFORD	39 39	76 11W	40	07	07		H
CUMBERLAND 2	2282	07	ALLEGANY	39 39	78 45W	730	18	18		H
CYLBURN	2308	06	BALTIMORE	39 21	76 39W	235	08	08		H
DALECARLIA RSVR	2325	04	PRINCE GEORGE'S	38 56	77 6W	150	08	08		H
DAMASCUS 3 SSW	2336	06	MONTGOMERY	39 15	77 13W	700	22	22		H
EMMITSBURG 2 SE	2906	06	FREDERICK	39 41	77 17W	403	07	07		H
FREDERICK 2 NNE	3353	06	FREDERICK	39 26	77 24W	280	07	07		H
FROSTBURG 2	3415	07	ALLEGANY	39 40	78 56W	2170	07	07		H
LAUREL 3 W	5111	04	PRINCE GEORGE'S	39 5	76 54W	400	24	07		H
MD SCI CTR BALTIMORE R	5718	04	BALTIMORE (CITY)	39 17	76 37W	20	24	24		CH
MECHANICSVILLE 5 NE	5865	03	ST MARY'S	38 28	76 42W	100	07	07		H
MILLERS 4 NE R	5934	06	CARROLL	39 43	76 48W	860	18	18		CH
NATL ARBORETUM DC	6350	04	DISTRICT OF COLUMBIA	38 55	76 58W	50	07	07		H
OAKLAND 1 SE	6620	08	GARRETT	39 25	79 24W	2420	07	07		H
OXON HILL	6800	04	PRINCE GEORGE'S	38 48	76 60W	120	08	08		H
PRINCESS ANNE	7330	01	SOMERSET	38 13	75 41W	20	17	17		H
ROYAL OAK 2 SSW	7806	02	TALBOT	38 43	76 11W	10	17	17		H
SALISBURY 2N	8004	01	WICOMICO	38 24	75 36W	20	17	17		H
SALISBURY FAA AP	8005	01	WICOMICO	38 20	75 31W	48	24	24		H
SAVAGE RIVER DAM R	8065	08	GARRETT	39 31	79 8W	1495	08	08	EV	CH
SHARPSBURG 5 S	8207	07	WASHINGTON	39 24	77 43W	500	07	07		H
SMITHSBURG 2NW	8371	06	WASHINGTON	39 40	77 35W	670	08	08		H
SNOW HILL 4 N	8380	01	WORCESTER	38 14	75 23W	30	17	17		H
SOLOMONS	8405	03	CALVERT	38 19	76 27W	12	08	08		H
UPPER MARLBORO 3 NNW	9070	04	PRINCE GEORGE'S	38 51	76 46W	130	08	08	EV	H
WESTMINSTER	9440	06	CARROLL	39 34	76 59W	765	07	07		H
WILLIAMSPORT	9570	07	WASHINGTON	39 36	77 50W	360	06	06		H
DELAWARE										
BEAR 2 SW	1200	01	NEW CASTLE	39 36	75 44W	80	24	24		H
DOVER	2730	02	KENT	39 15	75 31W	30	16	16		H
LEWES	5320	02	SUSSEX	38 47	75 8W	15	08	08		CH
WILMINGTON NEW CASTLE R	9595	01	NEW CASTLE	39 40	75 36W	79	24	24		CHJ
WILMINGTON PORTER RES	9605	01	NEW CASTLE	39 46	75 32W	270	24	24		H

REFERENCE NOTES

STATION NAMES: Name of the city, town or locality. Figures and letters following the station names indicate the distance in miles and direction from the post office or town community center.

DIVISIONS: Areas within a state of similar climatological characteristics. Division averages are calculated using data from stations that record both temperature and precipitation (i.e. not precipitation alone).

NORMALS: The average value of the meteorological element over a time period. Effective 1 January 2002, the averaging period is 1971 to 2000. The normals for National Weather Service localities have been adjusted so as to be representative for the current observation site.

MONTHLY DEGREE DAY TOTALS: One heating (cooling) degree day is accumulated for each whole degree that the daily mean temperature is below (above) 65 degrees Fahrenheit.

PRECIPITATION: Values shown in hundredths of inches are water equivalent totals, i.e., total of liquid and melted frozen precipitation. In the "Monthly Summarized Data" table the total snow and sleet values shown in tenths of inches are unmelted amounts. The max depth on ground values of snow and sleet shown in whole inches are cumulative unmelted amounts. The number of days with .10, .50, 1.00 or more refers to water equivalents.

PRECIPITATION QUALITY CONTROL: The NCDC quality control process may flag precipitation data that are spatially inconsistent, exceed climatological limits, or are inconsistent with prevailing weather patterns.

TEMPERATURE: Original temperature values are given in the "Daily Temperature" table. Summary temperature information (averages, departures, extremes, monthly degree day totals) is based on the values labeled MAX/MIN.

WIND: (As shown in the "Evaporation and Wind" table) the total wind movement in miles over the evaporation pan as determined by an anemometer recorder located 6-8 inches above the pan.

SYMBOLS AND LETTERS USED IN THE STATION INDEX TABLE

- C Station is equipped with recording rain gage (R) but values in this bulletin are from a non-recording rain gage unless indicated by an R.
- G Observations appear in the "Soil Temperatures" table.
- H Observations appear in the "Snowfall and Snow on the Ground" table.
- J Station also published as a Local Climatological Data publication.
- VAR Observation time varies.
- SR Observation time near sunrise.
- SS Observation time near sunset.

SYMBOLS AND LETTERS USED IN THE DATA TABLES

(DAILY DATA ARE FOR THE 24 HOURS IMMEDIATELY PRECEDING OBSERVATION TIME.)

BLANK Entries in the "Monthly Summarized Data" table indicate no record.

BLANK Entries in the "Daily Precipitation" and "Snowfall and Snow on the Ground" tables indicate zero.

BLANK Entries in the "Daily Temperature" table indicate a missing record

- No record. Data not recorded or not received in time for publication.

+ Precipitation or temperature extremes occurred on one or more previous dates during the month.

* Rain gage not read. Precipitation is included in the amount following the asterisks. Time distribution may not be known. A * preceding the monthly total indicates precipitation amount is being carried forward to next month's total, and may include amounts from the previous month(s).
a As a subscript, indicates accumulated total.

A Amount of precipitation is the total of observer's entries for the current month. It may include precipitation that occurred during the previous month. Refer to earlier bulletin to determine date of last reading. (Hawaii stations)

F Monthly calculation flagged value. F is appended to average and/or total values computed which exclude one or more daily data values that have been flagged by the GHCN-Daily Dataset

M Insufficient or partial data. M is appended to average and/or total values computed with 1-9 daily values missing. M appears alone if 10 or more daily values are missing, (8 or more for wind and evaporation).

N Indicates snow fall or Snowdepth totals are computed with one or more missing days.

R Amounts from recording rain gage.

T Trace. An amount too small to measure.

SEASONAL TABLES: Monthly and seasonal snowfall and heating degree days for the 12 months ending with the June data are published in the July issue of this bulletin. Cooling degree days for the calendar year are published in the "Climatological Data Annual Summary."

Information concerning the history of changes in locations, exposure, etc. of substations is kept on file at the National Climatic Data Center. Historical information of regular National Weather Service Offices may be obtained from the "Local Climatological Data" annual publication. The contents of this publication may be reprinted or otherwise used freely, with proper credit to the National Climatic Data Center. The data are also available digitally.

Effective with the January 2011 Data-Month, COOP Observer Names are no longer included in the Monthly and Annual Climatological Data Publications. This information is not published to ensure the privacy of personal information pursuant to Section 208 of the E-Government Act of 2002 (44 USC 3601).

The GHCN-Daily Quality Control Flags shown below are displayed as superscripts with the data. For more Information on Global Historical Climatology Network - Daily and flags, see:
<http://www.ncdc.noaa.gov/oa/climate/ghcn-daily/>
and

Comprehensive Automated Quality Assurance of Daily Surface Observations.
Durre, Imke, Matthew J. Menne, Byron E. Gleason, Tamara G. Houston, Russell S. Vose, 2010: J. Appl. Meteor. Climatol., 49, 16151633.
doi: 10.1175/2010JAMC2375.1

Blank = Passed All checks

D = failed duplicate check

G = failed gap check

I = failed internal consistency check

K = failed streak/frequent-value check

L = failed check on length of multiday period

M = failed megaconsistency check

N = failed naught check

O = failed climatological outlier check

R = failed lagged range check

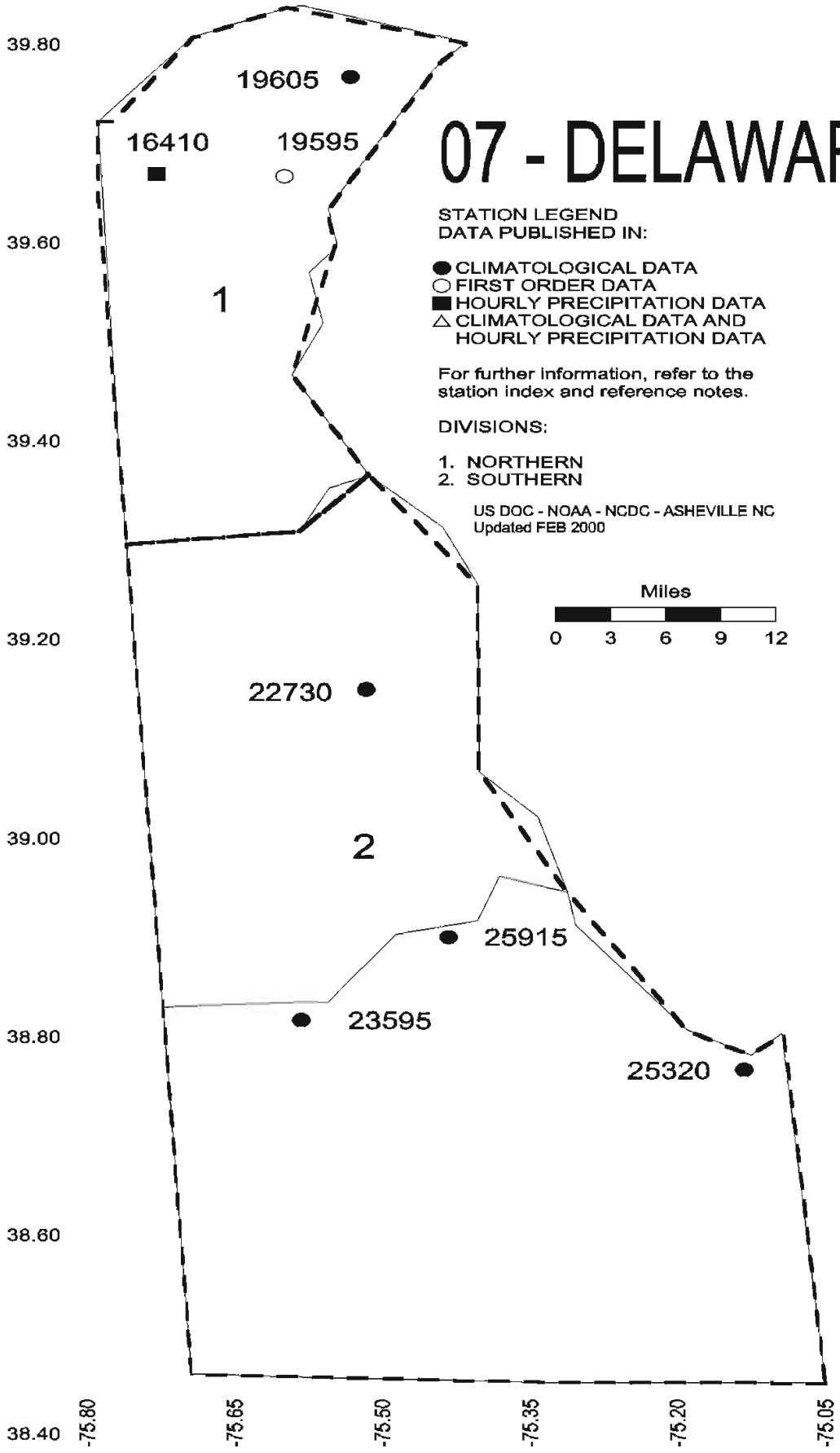
S = failed spatial consistency check

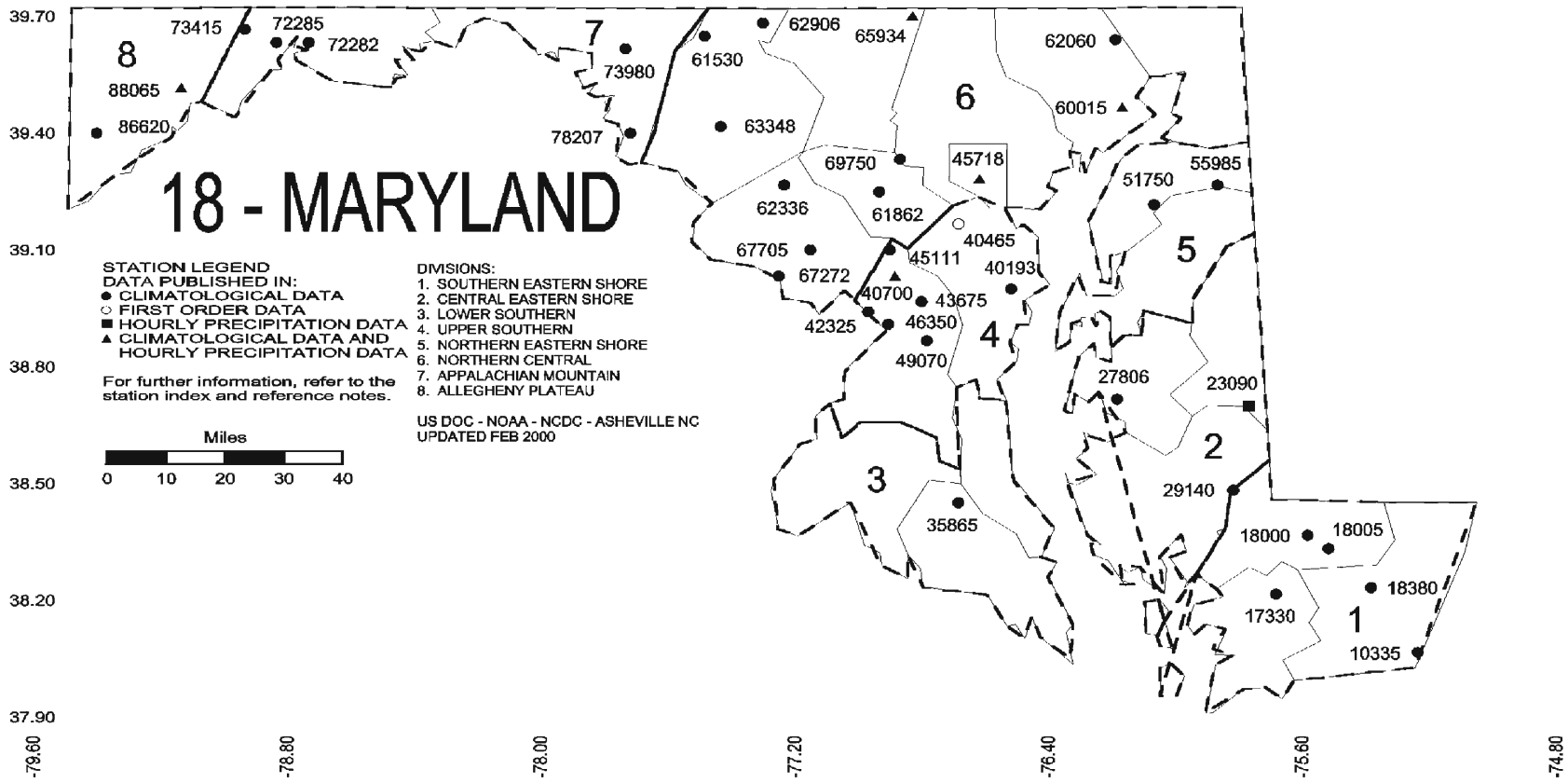
T = failed temporal consistency check

W = temperature too warm for snow

X = failed bounds check

07 - DELAWARE





These and other publications are available from the National Climatic Data Center

Hourly Precipitation Data

This publication contains hourly precipitation amounts obtained from recording rain gages located at National Weather Service, Federal Aviation Administration, and cooperative observer stations. Published data are displayed in inches and tenths or inches and hundredths at local standard time. HPD includes maximum precipitation for nine (9) time periods from 15 minutes to 24 hours, for selected stations.

Climatological Data

Monthly editions contain station daily maximum and minimum temperatures and precipitation. Some Stations provide daily snowfall, snow depth, evaporation, and soil temperature data. Each edition also contains monthly summaries for heating and cooling degree days (65 degree F base). The July issue contains a recap of monthly heating degree days and snow data for the preceding July through June.

The Annual issue contains monthly and annual averages of temperature, precipitation, temperature extremes, freeze data, soil temperatures, evaporation, and a recap of monthly cooling degree days.

Storm Data

Monthly issues contain a chronological listing, by states, of occurrences of storms and unusual weather phenomena. Reports contain information on storm paths, deaths, injuries, and property damage. An "Outstanding storms of the month" section highlights severe weather events with photographs, illustrations, and narratives. The December issue includes annual tornado, lightning, flash flood, and tropical cyclone summaries.

Monthly Climatic Data for the World

This publication contains monthly means for temperature, pressure, precipitation, vapor pressure, and sunshine for approximately 2,000 surface data collection stations worldwide and monthly mean upper air temperatures, dew point depressions, and wind velocities for approximately 500 observing sites.

Local Climatological Data

LCD publications summarize temperature, relative humidity, precipitation, cloudiness, wind speed and direction observations for several hundred cities in the U.S. and its territories. Each monthly publication also contains 3 hourly weather observations for that month and a hourly summary of precipitation. Annual LCD publications contain a summary of the past calendar year as well as historical averages and extremes.

For Information Call:

(828) 271-4800 Option 2

(828) 271-4010 (TDD)

(828) 271-4876 (Fax)

NOAA\National Climatic Data Center
Attn: User Engagement & Services Branch
151 Patton Avenue
Asheville, NC 28801-5001

PRSRT STD
POSTAGE & FEES PAID
United States Department of Commerce
NOAA Permit No. G-19

OFFICIAL BUSINESS
PENALTY FOR PRIVATE USE \$300
ADDRESS CORRECTION REQUESTED

To change your address, please return a copy of the mailing label along with your new address to:

NOAA\National Climatic Data Center
Attn: User Engagement & Services Branch
151 Patton Avenue
Asheville, NC 28801-5001

Customer Services Number: (828) 271-4800, option 2
TDD : (828) 271-4010
Fax number: (828) 271-4876

NCDC now offers an annual online subscription for the *Climatological Data* publication. When you purchase this subscription service, you will have **immediate online access** to all previous Climatological Data publications. Your subscription is valid for one year after purchase.

The total cost is \$42 for online delivery (including back issues).

To order this and other subscriptions online with your credit card, go to:

<http://www.ncdc.noaa.gov/oa/mpp/> and choose subscription.