



# CLIMATOLOGICAL DATA

## MARYLAND AND DELAWARE

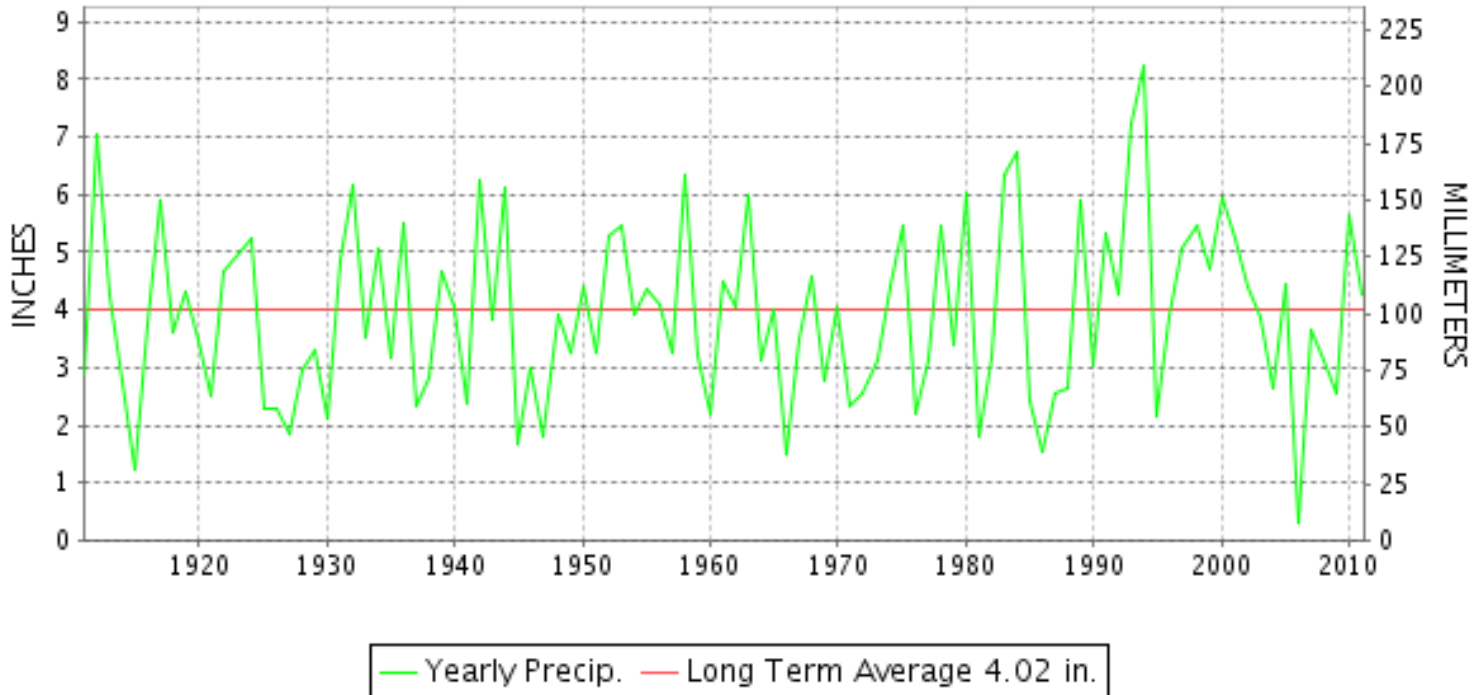
MARCH 2011

VOLUME 115 NUMBER 03

ISSN 0145-0549

GHCND Ver: 2.91-upd-2012021008

### MARCH PRECIPITATION BY YEAR



#### TEMPERATURE AND PRECIPITATION EXTREMES

##### MARYLAND

HIGHEST TEMPERATURE	82	MARCH 18+	2 STATIONS
LOWEST TEMPERATURE	13	MARCH 04++	2 STATIONS
GREATEST TOTAL PRECIPITATION	7.09		CONOWINGO DAM
LEAST TOTAL PRECIPITATION	3.53		SALISBURY FAA AP
GREATEST 1 DAY PRECIPITATION	2.90	MARCH 11	CYLBURN
GREATEST TOTAL SNOWFALL	9.1		OAKLAND 1 SE
GREATEST DEPTH OF SNOW OR ICE	5		OAKLAND 1 SE

"I certify that this is an official publication of the National Oceanic and Atmospheric Administration (NOAA) It is compiled using information from weather observing sites supervised by NOAA/National Weather Service and received at the National Climatic Data Center(NCDC), Asheville, North Carolina 28801."

Director  
National Climatic Data Center

noaa

National  
Oceanic and  
Atmospheric Administration

National  
Environmental Satellite, Data  
and Information Service

National  
Climatic Data Center  
Asheville, North Carolina

**DELAWARE**

HIGHEST TEMPERATURE	76	MARCH 18+	3 STATIONS
LOWEST TEMPERATURE	21	MARCH 03	WILMINGTON PORTER RES
GREATEST TOTAL PRECIPITATION	4.88		WILMINGTON PORTER RES
LEAST TOTAL PRECIPITATION	3.16		DOVER
GREATEST 1 DAY PRECIPITATION	1.55	MARCH 10	WILMINGTON PORTER RES
GREATEST TOTAL SNOWFALL	T		2 STATIONS



# MONTHLY STATION AND DIVISION SUMMARY

STATION	TEMPERATURE (°F)											PRECIPITATION (IN)												
	AVERAGE MAXIMUM	AVERAGE MINIMUM	AVERAGE	DEPARTURE FROM NORMAL	HIGHEST	DATE	LOWEST	DATE	HEATING DEG. DAYS	COOLING DEG. DAYS	NO. OF DAYS				TOTAL	DEPARTURE FROM NORMAL	GREATEST 24 HOURS	DATE	ICE PELLETS, SNOW			NO OF DAYS		
											MAX		MIN						TOTAL	MAX DEPTH ON GROUND	DATE	10 OR MORE	50 OR MORE	1 00 OR MORE
											>=90	<=32	<=32	<=0										
EMMITSBURG 2 SE	52.2	31.3	41.8	-1.2	79	19	20	04+	714	0	0	0	19	0	6.33	2.38	2.00	07	N 0.5	0		10	4	2
FREDERICK 2 NNE	53.8F	32.6F	43.2F		80	19	19	04	667	0	0	0	15	0	5.36		2.43	07	N T	0		10	2	2
MILLERS 4 NE	52.1	31.8	42.0	0.3	77	18	17	03	710	0	0	0	17	0	6.31	2.54	2.39	10	1.5	0		9	3	2
POTOMAC FLTR PLT	M	M	M												M				0.0	0				
SMITHSBURG 2NW	52.2	28.3F	40.3F		75	21	15	07+	748	0	0	0	18	0	4.92		1.65	07	0.0	0		9	3	2
WESTMINSTER	50.8	31.4	41.1	-1.9	78	19	19	04+	731	0	0	0	18	0	5.54	1.98	1.77	11	0.3	T	31	9	2	2
--DIVISIONAL DATA-----> APPALACHIAN MOUNTAIN 07			42.1	-0.6											5.51	1.48								
CUMBERLAND 2	55.9	31.4	43.7	1.0	76	22+	19	04+	655	0	0	0	18	0	5.07	1.77	1.49	10	N 1.0	0		10	4	1
FROSTBURG 2	47.1	25.5	36.3	1.0	70	19	13	04+	884	0	0	0	25	0	6.80	2.96	2.10	10	N 6.4	N 3	27	10	4	2
SHARPSBURG 5 S	53.5	29.7	41.6		80	19	20	04+	720	0	0	0	19	0	5.78		1.97	07	N 1.4	N 1	27	9	3	2
WILLIAMSPORT	54.0	28.6	41.3		78	21	18	04+	729	0	0	0	21	0	5.67		1.55	07	N 0.6	0		10	4	1
--DIVISIONAL DATA-----> ALLEGHENY PLATEAU 08			40.7	0.0											5.83	2.41								
OAKLAND 1 SE	46.8	25.9	36.4	-1.5	67	24	13	03	881	0	0	0	24	0	5.19	1.24	1.23	06	9.1	5	11	11	4	1
SAVAGE RIVER DAM	48.6F	28.7	38.7F	1.6	69	19	18	04+	793	0	0	0	21	0	5.23	1.95	1.32	10	0.0	2	07	11	3	1
--DIVISIONAL DATA----->  DELAWARE NORTHERN 01			37.6	0.6											5.21	1.34								
BEAR 2 SW	52.1	32.8	42.5		76	18	22	29+	690	0	0	0	15	0	4.47		1.37	06	T	0		5	4	2
WILMINGTON NEW CASTLE	51.5	33.0	42.3	-0.4	76	18	22	03	698	0	0	0	16	0	4.05	0.08	1.29	10	T	0		6	4	2
WILMINGTON PORTER RES	49.7	33.4	41.6		73	18	21	03	720	0	0	0	15	0	4.88		1.55	10	0.0	0		7	4	2
--DIVISIONAL DATA-----> SOUTHERN 02			42.1	-0.6											4.47	0.36								
DOVER	55.7	35.1	45.4	0.0	76	19+	23	03	601	0	0	0	10	0	3.16	-1.24	1.04	06	0.0	0		7	3	1
LEWES	M	M	M												M				0.0	0				
--DIVISIONAL DATA----->			45.4	1.0											3.16	-1.24								

DAILY PRECIPITATION (INCHES)

STATION	TOTAL	DAY OF MONTH																														
		01	02	03	04	05	06	07	08	09	10	11	12	13	14	15	16	17	18	19	20	21	22	23	24	25	26	27	28	29	30	31
<b>MARYLAND</b>																																
<b>SOUTHERN</b>																																
<b>EASTERN SHORE 01</b>																																
ASSATEAGUE	3.95	0.03				0.53				1.33	0.23					0.49					0.37	0.03	0.13	0.06			0.26			0.13	0.36	
PRINCESS ANNE	M 0.62				-	-	1.00			0.80		-	-			0.43				-	-	-	-	-	-	-	-	-	-	-	-	
SALISBURY 2N	M -	-	-	-	-	-	-	-	-	-	-	-	-	-	-	-	-	-	-	-	-	-	-	-	-	-	-	-	-	-	-	
SALISBURY FAA AP	3.53	T				1.10	0.01		T	0.76	0.03					0.41						0.23	0.02	0.30	0.06			0.27		0.04	0.30	
SNOW HILL 4 N	3.58	0.57				0.17	0.51			0.32	0.58					0.45						0.20	0.01	0.06	0.34			0.17			0.20	
<b>CENTRAL</b>																																
<b>EASTERN SHORE 02</b>																																
FEDERALSBURG R	M -	-	-	-	-	-	-	-	-	-	-	-	-	-	-	-	-	-	-	-	-	-	-	-	-	-	-	-	-	-	-	
ROYAL OAK 2 SSW	5.72	0.27				1.38	0.47			1.09	0.42					0.85						0.33		0.07	0.70			0.04		T	0.10	
<b>LOWER SOUTHERN 03</b>																																
MECHANICSVILLE 5 NE	6.07	0.83				T	1.34			0.94	0.86					0.81						0.19	0.35	0.06	0.44	0.01		0.11			0.13	
SOLOMONS	5.94	0.60				0.01	1.80			0.37	0.95					0.92				0.01		0.26	0.12	0.10	0.35	0.11		0.24			0.10	
<b>UPPER SOUTHERN 04</b>																																
BALTIMORE WASH INTL AP R	4.99					1.05	0.01		0.02	2.61	T				0.13	0.47					T	0.21	0.03	0.28	0.02			T		0.13	0.03	
BELTSVILLE R	4.74	0.42				0.06	1.32			0.57	1.13	0.01				0.55						0.28		0.02	0.19	0.01					0.18	
DALECARLIA RSVR	6.62	0.57				0.22	2.00			0.79	1.60					0.60						0.30	0.02		0.25	0.05					0.22	
LAUREL 3 W	M -	-	-	-	-	1.51	0.08		-	3.69	-	-	-	-	0.15	0.50	-	-	-	-	-	0.30	-	0.35	0.04	-	-	-	-	-	0.11	
MD SCI CTR BALTIMORE R	5.26					1.00	0.01			2.83					0.12	0.52						0.23	0.04	0.35						0.12	0.04	
NATL ARBORETUM DC	M 4.22	0.54				0.12	1.30			0.85	-					0.70						0.26	T	T	0.28			0.01			0.16	
OXON HILL	5.81	0.58				T	0.20	1.41		0.59	1.33					0.67						0.01	0.24	0.01	0.48	0.09		0.03			0.17	
UPPER MARLBORO 3 NNW	5.33	0.45				0.10	1.09			0.82	1.28					0.68						0.02	0.25	0.01	0.43			0.02			0.18	
<b>NORTHERN</b>																																
<b>EASTERN SHORE 05</b>																																
CHESTERTOWN	4.22					1.38	0.26		T	0.95	0.15					0.72						0.25		0.28	0.20					T	0.03	
<b>NORTHERN CENTRAL 06</b>																																
ABERDEEN PHILLIPS FLD	FM 3.55	0.10				-	1.54 <sup>L</sup>			0.65	1.03					0.67						0.03	0.12	0.21	0.67	T					0.07	
BRIGHTON DAM	5.50	0.05				1.70	0.20			1.65	0.10				0.10	0.65						0.05		0.50	0.15					0.15	0.20	
CATOCTIN MTN PARK	M -	-	-	-	-	-	-	-	-	-	-	-	-	-	-	-	-	-	-	-	-	-	-	-	-	-	-	-	-	-	-	
CONOWINGO DAM	7.09	0.22				0.16	2.25			0.88	1.89					0.71						0.04	0.13	0.14	0.52						0.15	
CYLBURN	FM 5.28	0.37 <sup>L</sup>				-	-	1.05 <sup>L</sup>		0.78	2.90					0.64						0.26		0.20	0.28	-	0.02 <sup>L</sup>				0.22	
DAMASCUS 3 SSW	5.22					2.10	0.11		0.02	1.60	0.03				0.04	0.40						0.24		0.32	0.06			T		0.20	0.10	
EMMITSBURG 2 SE	6.33	0.22				0.40	2.00			0.62	1.53					0.12						0.02	0.11	0.28	0.74	0.06					0.23	
FREDERICK 2 NNE	5.36	0.23				0.12	2.43		0.26		1.12					0.10						0.20	0.03	0.18	0.38	0.03		T			0.28	
MILLERS 4 NE R	6.31	0.06				0.01	1.06	0.42		2.39	0.69	T			T	0.44						0.21		0.27	0.48					T	0.28	
POTOMAC FLTR PLT	M -	-	-	-	-	-	-	-	-	-	-	-	-	-	-	-	-	-	-	-	-	-	-	-	-	-	-	-	-	-	-	
SMITHSBURG 2NW	4.92					0.25	1.65			0.45	1.10					0.10						0.15		0.27	0.65	0.05					0.25	
WESTMINSTER	5.54	0.16					1.60	0.04		0.43	1.77					0.36						0.15	0.05	0.23	0.49	0.04					0.22	
<b>APPALACHIAN</b>																																
<b>MOUNTAIN 07</b>																																

DAILY PRECIPITATION (INCHES)

STATION	TOTAL	DAY OF MONTH																														
		01	02	03	04	05	06	07	08	09	10	11	12	13	14	15	16	17	18	19	20	21	22	23	24	25	26	27	28	29	30	31
CUMBERLAND 2	5.07	0.16				0.83	0.46			1.49	0.50				0.23				0.01		0.10	0.03	0.42	0.62								0.22
FROSTBURG 2	6.80	0.37				0.92	0.44		T	2.10	1.12	T			0.36	T		0.04		0.14	0.01	0.45	0.64	0.02			T				0.19	
SHARPSBURG 5 S	5.78	0.31				0.21	1.97			0.72	1.30	T			0.08			0.02		0.16	0.02	0.14	0.45	0.06			T	T			0.34	
WILLIAMSPORT	5.67	0.16				0.35	1.55			0.66	0.98				0.20					0.01	0.34	0.32	0.70	0.04							0.36	
<b>ALLEGHENY PLATEAU 08</b>																																
OAKLAND 1 SE	5.19	0.49				1.23	0.73		0.09		0.05	0.05			0.20	0.03		0.08		0.68	0.36	0.10	0.70	0.05	0.05	0.10			0.10	0.10		
SAVAGE RIVER DAM R	5.23	0.39				0.62	0.33		0.04	1.32	0.81				0.46	T		0.11		0.19	T	0.25	0.48	T		T				0.23		
<b>DELAWARE</b>																																
<b>NORTHERN 01</b>																																
BEAR 2 SW	4.47				T	1.37	0.01		T	1.08	0.08				0.07	0.61				0.21		0.96	0.03							T	0.05	
NEWARK UNIV FARM R	M	-	-	-	-	-	-	-	-	-	-	-	-	-	-	-	-	-	-	-	-	-	-	-	-	-	-	-	-	-	-	-
WILMINGTON NEW CASTLE R	4.05					1.09	0.02		T	1.29	0.17				0.06	0.54				0.30		0.50	0.02						0.01	0.05		
WILMINGTON PORTER RES	4.88					1.29				1.55	0.17				0.60					0.48		0.58	0.06						0.02	0.13		
<b>SOUTHERN 02</b>																																
DOVER	3.16					1.04				0.51	0.12				0.77					0.20		0.36	0.03								0.13	
LEWES	M	-	-	-	-	-	-	-	-	-	-	-	-	-	-	-	-	-	-	-	-	-	-	-	-	-	-	-	-	-	-	-



DAILY TEMPERATURES (°F)

STATION	OB. TIME	MAX/MIN	DAY OF MONTH																															AVERAGE
			01	02	03	04	05	06	07	08	09	10	11	12	13	14	15	16	17	18	19	20	21	22	23	24	25	26	27	28	29	30	31	
NORTHERN CENTRAL 06 ABERDEEN PHILLIPS FLD		MIN	32	30	23	25	34 <sup>1</sup>	41	34		31	45	41	38	40	32	31	41	39	51	45	33	46 <sup>1</sup>	43	39	35	39 <sup>1</sup>	27	31	28	31	31	36	35.3
	07	MAX	62	47	61	38	48	65	58	48	49	48	58	50	55	55	52	54	57	65	79	58	50	62	59	45	43	45	44	46	47	52	47	53.1
CATOCTIN MTN PARK		MIN	34	27	24	24	29	40	34	31	33	36	44	36	37	33	31	31	40	40	51	35	35	42	39	37	30	27	27	26	25	26	32	33.4
	17	MAX	51	54	44	44																												
CONOWINGO DAM		MIN	32	30	15	24																												M
	07	MAX	58	48	60	40	46	64	57	48	49	48	56	55	55	56	52	52	56	65	78	58	51	62	62	62 <sup>S</sup>	46	46	47	48	52	48	54.2	
CYLBURN		MIN	32	28	22	22	24	39	32	28	28	34	39	30	32	32	27	28	39	38	42	34	36	40	38	36	28	27	29	27	26	26	28	31.3
	08	MAX	64	45	58	36	44	60	55	45	47	47	60	49	56	53	50	48	55	63	78	57	47	67	59	43	39	43	43	44	47	50	44	51.5
DAMASCUS 3 SSW		MIN	30	30	21	21	29	41	32	28	30	35	40	34	40	35	29	30	41	41	48	32	35	42	38	36	27	26	26	27	28	30	33	32.7
	22	MAX	43	59	36	48	61	56	44	48	44	55	46	56	52	49	49	56	63	78	66	50	69	66	47	42	42	43	43	44	49	44	40	51.2
EMMITSBURG 2 SE		MIN	28	32	20	26	39	34	31	30	34	42	36	36	37	35	32	39	39	50	44	30	40	45	40	32	27	26	28	26	27	33	33	33.9
	07	MAX	59	45	58	35	48	62	58	47	47	49	56	47	57	52	51	50	56	64	79	58	50	69	59	44	41	42	44	46	47	51	46	52.2
FREDERICK 2 NNE		MIN	28	28	20	20	26	40	32	27	27	33	39	37	41	37	29	29	37	37	44	30	31	41	39	35	26	24	26	24	24	28	31	31.3
	07	MAX	58	48	59	38	51	63	58	50	50	47 <sup>1</sup>	56	46	60	54	51	51	59	66	80	59	54	73	61	46	43	42	44	46	48	52	47	53.8
MILLERS 4 NE		MIN	30	29	21	19	28	41	33	27	35	26	39 <sup>1</sup>	38	40	39	30	30	41	41	49	33	33	41	41	37	28	25	25	27	27	30	33	32.6
	18	MAX	51	55	44	45	61	54	43	49	42	55	56	56	52	50	50	54	61	77	74	54	68	67	50	41	41	41	43	45	49	47	40	52.1
SMITHSBURG 2NW		MIN	27	29	17	25	35	38	29	24	30	39	37	34	40	35	28	38	37	47	44	29	38	41	35	32	23	22	27	23	25	26	32	31.8
	08	MAX	45	43	54	49	50	55	60	48	44	47	56	41	61	48	48	49	53	73	71	62	75	71	58	55	39	39	41	44	45	48	46	52.2
WESTMINSTER		MIN	25	26	15	15	27	48 <sup>1</sup>	15	22	23	33 <sup>1</sup>	34	34	36	36	31	31	33	37	51	35	31	38	37	35	23	21	21	19	19	19	31	28.3
	07	MAX	59	44	57	36	45	62	55	43	49	48	56	47	57	51	48	48	56	62	78	55	50	69	57	42	38	41	41	44	45	49	44	50.8
APPALACHIAN MOUNTAIN 07		MIN	29	29	19	19	27	39	31	26	28	33	37	35	38	37	31	31	37	38	47	32	32	40	37	35	26	25	24	25	29	33	31.4	
	18	MAX	62	50	56	44	56	59	50	49	51	45	53	46	67	60	54	52	56	70	76	72	57	76	72	60	45	45	47	49	49	54	52	55.9
CUMBERLAND 2		MIN	27	25	19	19	28	36	28	25	33	37	37	37	39	31	31	38	39	45	32	32	44	41	40	25	25	26	24	24	27	34	31.4	
	07	MAX	57	45	48	36	49	53	46	38	43	40	46	33	57	38	44	43	45	62	70	51	50	68	61	61	36	37	39	41	41	45	38	47.1
FROSTBURG 2		MIN	19	19	13	13	21	35	19	19	22	28	29	29	31	30	28	28	32	36	36	28	27	38	36	36	19	19	18	17	17	19	29	25.5
	07	MAX	60	46	59	39	49	61	57	47	49	51	57	45	62	62	51	50	57	65	80	59	53	77	60	47	42	41	43	45	47	51	46	53.5
SHARPSBURG 5 S		MIN	26	25	20	20	28	43	29	23	23	36	34	33	33	32	35	34	31	32	44	29	29	41	39	38	23	23	22	22	21	21	33	29.7
	06	MAX	56	48	56	40	41	52	60	46	43	48	56	60	51	62	52	55	56	62	65	57	78	76	58	53	62	44	43	48	48	52	46	54.0
WILLIAMSPORT		MIN	26	22	18	18	28	23	28	22	22	37	38	38	31	31	28	28	33	28	36	34	34	40	35	39	26	26	22	22	22	30	28.6	
	07	MAX	64	44	47	39	52	55	55	38	42	45	47	36	37	41	45	46	41	61	66	51	54	64	57	67	35	34	38	38	39	36	36	46.8
OAKLAND 1 SE		MIN	19	20	13	14	27	22	19	19	25	28	27	27	31	28	28	34	36	36	37	25	30	40	40	33	20	20	21	17	17	18	31	25.9
	08	MAX	56	43	48	86 <sup>S</sup>	51	55	46	40	43	41	47	37	58	45	47	47	45	61	69	52	52	67	59	51	51	38	41	42	41	45	40	48.6
SAVAGE RIVER DAM		MIN	24	24	18	18	28	35	24	22	22	31	33	32	35	34	28	22	35	37	42	29	30	40	40	37	24	24	25	22	23	31	28.7	
	08	MAX	56	43	48	86 <sup>S</sup>	51	55	46	40	43	41	47	37	58	45	47	47	45	61	69	52	52	67	59	51	51	38	41	42	41	45	40	48.6
DELAWARE NORTHERN 01		MIN	24	24	18	18	28	35	24	22	22	31	33	32	35	34	28	22	35	37	42	29	30	40	40	37	24	24	25	22	23	31	28.7	
	24	MAX	48	59	38	45	64	60	48	50	47	55	52	56	55	49	51	58	64	76	68	51	60	56	45	42	44	43	45	46	50	47	43	52.1
BEAR 2 SW		MIN	27	27	23	24	35	40	31	26	29	44	41	37	36	28	26	41	42	45	41	33	41	38	39	35	23	22	29	28	22	26	38	32.8



## DAILY TEMPERATURES (°F)

STATION	OB. TIME	MAX/MIN	DAY OF MONTH																															AVERAGE	
			01	02	03	04	05	06	07	08	09	10	11	12	13	14	15	16	17	18	19	20	21	22	23	24	25	26	27	28	29	30	31		
WILMINGTON NEW CASTLE	24	MAX	47	59	36	45	60	56	49	49	46	56	52	56	55	49	49	59	64	76	67	49	60	56	43	42	44	42	46	46	50	47	42	51.5	
		MIN	31	30	22	27	38	39	33	27	32	43	40	37	34	32	29	40	39	46	38	31	41	39	38	30	24	24	29	23	24	27	37	33.0	
WILMINGTON PORTER RES	24	MAX	43	55	34	44	61	56	45	47	47	57	51	53	53	47	50	56	62	73	67	48	59	53	42	39	41	39	42	43	47	47	40	49.7	
		MIN	31	29	21	26	38	39	32	29	29	40	38	37	39	35	32	39	42	47	39	33	38	42	36	31	26	26	26	25	25	30	36	33.4	
<b>SOUTHERN 02</b>																																			
DOVER	16	MAX	57	58	57	44	64	63	62	50	47	57	57	59	59	59	52	58	64	76	76	56	63	62	59	43	45	44	46	45	51	50	45	55.7	
		MIN	31	27	23	25	39	42	34	27	35	45	42	37	38	34	32	44	43	49	40	33	41	42	40	33	26	25	33	27	29	33	38	35.1	
LEWES	17	MAX																																M	
		MIN																																	M

## SNOWFALL AND SNOW ON GROUND (INCHES)

STATION		DAY OF MONTH																																		
		01	02	03	04	05	06	07	08	09	10	11	12	13	14	15	16	17	18	19	20	21	22	23	24	25	26	27	28	29	30	31				
<b>MARYLAND SOUTHERN EASTERN SHORE 01</b> SNOW HILL 4 N	SNOWFALL	-	-	-	-	-	-	-	-	-	-	-	-	-	-	-	-	-	-	-	-	-	-	-	-	-	-	-	-	-	-	18	-	-	-	-
	SN ON GND	-	-	-	-	-	-	-	-	-	-	-	-	-	-	-	-	-	-	-	-	-	-	-	-	-	-	-	-	-	-	-	-	-	-	
<b>CENTRAL EASTERN SHORE 02</b> ROYAL OAK 2 SSW	SNOWFALL	-	-	-	-	-	-	-	-	-	-	-	-	-	-	-	-	-	-	-	-	-	-	-	-	-	-	-	-	-	-	08	-	-	-	-
	SN ON GND	-	-	-	-	-	-	-	-	-	-	-	-	-	-	-	-	-	-	-	-	-	-	-	-	-	-	-	-	-	-	-	-	-	-	
<b>LOWER SOUTHERN 03</b> MECHANICSVILLE 5 NE	SNOWFALL	-	-	-	-	-	-	-	-	-	-	-	-	-	-	-	-	-	-	-	-	-	-	-	-	-	-	-	-	-	-	-	07	-	-	
	SN ON GND	-	-	-	-	-	-	-	-	-	-	-	-	-	-	-	-	-	-	-	-	-	-	-	-	-	-	-	-	-	-	-	1	-	-	
SOLOMONS	SNOWFALL	-	-	-	-	-	-	-	-	-	-	-	-	-	-	-	-	-	-	-	-	-	-	-	-	-	-	-	-	-	-	-	19	-	-	
	SN ON GND	-	-	-	-	-	-	-	-	-	-	-	-	-	-	-	-	-	-	-	-	-	-	-	-	-	-	-	-	-	-	-	2	-	-	
<b>UPPER SOUTHERN 04</b> BALTIMORE WASH INTL AP R	SNOWFALL	-	-	-	-	-	-	-	-	-	-	-	-	-	-	-	-	-	-	-	-	-	-	-	-	-	-	-	-	-	-	-	-	T	-	
	SN ON GND	-	-	-	-	-	-	-	-	-	-	-	-	-	-	-	-	-	-	-	-	-	-	-	-	-	-	-	-	-	-	-	-	-	T	
NATL ARBORETUM DC	SNOWFALL	-	-	-	-	-	-	-	-	-	-	-	-	-	-	-	-	-	-	-	-	-	-	-	-	-	-	-	-	-	-	-	-	T	-	
	SN ON GND	-	-	-	-	-	-	-	-	-	-	-	-	-	-	-	-	-	-	-	-	-	-	-	-	-	-	-	-	-	-	-	-	-	T	
	WTR EQUIV	-	-	-	-	-	-	-	-	-	-	-	-	-	-	-	-	-	-	-	-	-	-	-	-	-	-	-	-	-	-	-	-	-	-	
OXON HILL	SNOWFALL	-	-	-	-	-	-	-	-	-	-	-	-	-	-	-	-	-	-	-	-	-	-	-	-	-	-	-	-	-	-	-	-	-	T	
	SN ON GND	-	-	-	-	-	-	-	-	-	-	-	-	-	-	-	-	-	-	-	-	-	-	-	-	-	-	-	-	-	-	-	-	-	03	
UPPER MARLBORO 3 NNW	SNOWFALL	-	-	-	-	-	-	-	-	-	-	-	-	-	-	-	-	-	-	-	-	-	-	-	-	-	-	-	-	-	-	-	-	-	T	
	SN ON GND	-	-	-	-	-	-	-	-	-	-	-	-	-	-	-	-	-	-	-	-	-	-	-	-	-	-	-	-	-	-	-	-	-	T	
<b>NORTHERN EASTERN SHORE 05</b> CHESTERTOWN	SNOWFALL	-	-	-	-	-	-	-	-	-	-	-	-	-	-	-	-	-	-	-	-	-	-	-	-	-	-	-	-	-	-	-	-	-	T	
	SN ON GND	-	-	-	-	-	-	-	-	-	-	-	-	-	-	-	-	-	-	-	-	-	-	-	-	-	-	-	-	-	-	-	-	-	-	
<b>NORTHERN CENTRAL 06</b> DAMASCUS 3 SSW	SNOWFALL	-	-	-	-	-	-	-	-	-	-	-	-	-	-	-	-	-	-	-	-	-	-	-	-	-	-	-	-	-	-	-	-	-	T	
	SN ON GND	-	-	-	-	-	-	-	-	-	-	-	-	-	-	-	-	-	-	-	-	-	-	-	-	-	-	-	-	-	-	-	-	-	T	
EMMITSBURG 2 SE	SNOWFALL	-	-	-	-	-	-	-	-	-	-	-	-	-	-	-	-	-	-	-	-	-	-	-	-	-	-	-	-	-	-	-	-	-	05	
	SN ON GND	-	-	-	-	-	-	-	-	-	-	-	-	-	-	-	-	-	-	-	-	-	-	-	-	-	-	-	-	-	-	-	-	-	-	
FREDERICK 2 NNE	SNOWFALL	-	-	-	-	-	-	-	-	-	-	-	-	-	-	-	-	-	-	-	-	-	-	-	-	-	-	-	-	-	-	-	-	-	T	
	SN ON GND	-	-	-	-	-	-	-	-	-	-	-	-	-	-	-	-	-	-	-	-	-	-	-	-	-	-	-	-	-	-	-	-	-	-	
MILLERS 4 NE R	SNOWFALL	-	-	-	-	-	-	-	-	-	-	-	-	-	-	-	-	-	-	-	-	-	-	-	-	-	-	-	-	-	-	-	-	-	T	
	SN ON GND	-	-	-	-	-	-	-	-	-	-	-	-	-	-	-	-	-	-	-	-	-	-	-	-	-	-	-	-	-	-	-	-	-	-	
WESTMINSTER	SNOWFALL	-	-	-	-	-	-	-	-	-	-	-	-	-	-	-	-	-	-	-	-	-	-	-	-	-	-	-	-	-	-	-	-	-	-	
	SN ON GND	-	-	-	-	-	-	-	-	-	-	-	-	-	-	-	-	-	-	-	-	-	-	-	-	-	-	-	-	-	-	-	-	-	-	
<b>APPALACHIAN MOUNTAIN 07</b> CUMBERLAND 2	SNOWFALL	-	-	-	-	-	-	-	-	-	-	-	-	-	-	-	-	-	-	-	-	-	-	-	-	-	-	-	-	-	-	-	-	-	-	
	SN ON GND	-	-	-	-	-	-	-	-	-	-	-	-	-	-	-	-	-	-	-	-	-	-	-	-	-	-	-	-	-	-	-	-	-	-	

Snowfall: Includes snow and ice Values for NWS stations (J index note) are Mid-Mid (LST)

Snow on ground: Includes snow, sleet, ice, and hail Values for NWS stations (J index note) are observed at 12 UTC (GMT)

Water Equivalent: Given for NWS stations (J index note) only, when snow depth is 2 inches or more, and is measured at 18 UTC (GMT)

## SNOWFALL AND SNOW ON GROUND (INCHES)

STATION		DAY OF MONTH																														
		01	02	03	04	05	06	07	08	09	10	11	12	13	14	15	16	17	18	19	20	21	22	23	24	25	26	27	28	29	30	31
FROSTBURG 2	SNOWFALL	-	-	-	-	-	-	17	-	T	26	02	T	-	-	-	09	-	-	-	-	-	-	-	-	-	-	T	-	-	10	
	SN ON GND	-	-	-	-	-	-	2	T	T	3	T	T	-	-	-	1	-	-	-	-	-	-	-	-	-	-	T	-	-	1	
SHARPSBURG 5 S	SNOWFALL	-	-	-	-	-	-	12	-	-	-	-	-	-	-	-	-	-	-	-	-	-	-	-	-	-	-	02	T	-	-	T
	SN ON GND	-	-	-	-	-	-	1	-	-	-	-	-	-	-	-	-	-	-	-	-	-	-	-	-	-	-	T	-	-	-	
WILLIAMSPORT	SNOWFALL	-	-	-	-	-	-	06	-	-	-	-	-	-	-	-	-	-	-	-	-	-	-	-	-	-	-	-	-	-	-	
	SN ON GND	-	-	-	-	-	-	-	-	-	-	-	-	-	-	-	-	-	-	-	-	-	-	-	-	-	-	-	-	-	-	
	WTR EQUIV	-	-	-	-	-	-	060	-	-	-	-	-	-	-	-	-	-	-	-	-	-	-	-	-	-	-	-	-	-	-	
<b>ALLEGHENY PLATEAU 08</b> OAKLAND 1 SE	SNOWFALL	-	-	-	-	-	-	54	-	04	-	05	10	-	-	-	-	-	-	-	-	-	-	-	-	-	03	-	10	-	05	
	SN ON GND	-	-	-	-	-	-	5	-	T	-	T	1	-	-	-	-	-	-	-	-	-	-	-	-	-	-	-	-	-	-	
DELAWARE <b>NORTHERN 01</b> BEAR 2 SW	SNOWFALL	-	-	-	-	-	-	-	-	-	-	-	-	-	-	-	-	-	-	-	-	-	-	-	-	-	-	-	-	-	-	
	SN ON GND	-	-	-	-	-	-	-	-	-	-	-	-	-	-	-	-	-	-	-	-	-	-	-	-	-	-	-	-	-	-	
WILMINGTON NEW CASTLE R	SNOWFALL	-	-	-	-	-	-	-	-	-	-	-	-	-	-	-	-	-	-	-	-	-	-	-	-	-	-	-	-	-	-	
	SN ON GND	-	-	-	-	-	-	-	-	-	-	-	-	-	-	-	-	-	-	-	-	-	-	-	-	-	-	-	-	-	-	

Snowfall: Includes snow and ice Values for NWS stations (J index note) are Mid-Mid (LST)

Snow on ground: Includes snow, sleet, ice, and hail Values for NWS stations (J index note) are observed at 12 UTC (GMT)

Water Equivalent: Given for NWS stations (J index note) only, when snow depth is 2 inches or more, and is measured at 18 UTC (GMT)

PAN EVAPORATION AND WIND

STATION		DAY OF MONTH																															TOTAL OR AVERAGE			
		01	02	03	04	05	06	07	08	09	10	11	12	13	14	15	16	17	18	19	20	21	22	23	24	25	26	27	28	29	30	31				
MARYLAND UPPER SOUTHERN 04 BELTSVILLE	WIND	-	-	-	-	-	-	-	-	-	-	-	-	-	-	-	-	-	-	-	-	-	-	-	-	-	-	-	-	-	-	-	-	-	M	
	EVAP	-	-	-	-	-	-	-	-	-	-	-	-	-	-	-	-	-	-	-	-	-	-	-	-	-	-	-	-	-	-	-	-	-	0.00	
	MAX	-	-	-	-	-	-	-	-	-	-	-	-	-	-	-	-	-	-	-	-	-	-	-	-	-	-	-	-	-	-	-	-	-	M	
	MIN	-	-	-	-	-	-	-	-	-	-	-	-	-	-	-	-	-	-	-	-	-	-	-	-	-	-	-	-	-	-	-	-	-	-	M
UPPER MARLBORO 3 NNW	WIND	-	-	-	-	-	-	-	-	-	-	-	-	-	-	-	-	-	-	-	-	-	-	-	-	-	-	-	-	-	-	-	-	-	M	
	EVAP	-	-	-	-	-	-	-	-	-	-	-	-	-	-	-	-	-	-	-	-	-	-	-	-	-	-	-	-	-	-	-	-	-	M	
	MAX	60	60	63	54	58	59	58	58	57	48	54	56	54	65	61	55	61	70	70	69	63	65	71	50	49	58	62	58	58	63	47	59.2	M		
	MIN	38	37	34	34	36	41	36	36	37	38	46	38	38	38	38	40	44	45	49	41	41	43	47	43	37	38	38	38	38	38	38	39	39.5	M	
ALLEGHENY PLATEAU 08 SAVAGE RIVER DAM	WIND	-	-	-	-	-	-	-	-	-	-	-	-	-	-	-	-	-	-	-	-	-	-	-	-	-	-	-	-	-	-	-	-	-	M	
	EVAP	-	-	-	-	-	-	-	-	-	-	-	-	-	-	-	-	-	-	-	-	-	-	-	-	-	-	-	-	-	-	-	-	-	M	
	MAX	-	-	-	-	-	-	-	-	-	-	-	-	-	-	-	-	-	-	-	-	-	-	-	-	-	-	-	-	-	-	-	-	-	-	M
	MIN	-	-	-	-	-	-	-	-	-	-	-	-	-	-	-	-	-	-	-	-	-	-	-	-	-	-	-	-	-	-	-	-	-	-	M

Evaporation: Is measured in hundredths of inches.

Wind: Is measured in miles.

Max and Min: The maximum and minimum temperatures (Fahrenheit) of the water in the evaporation pan.

STATION INDEX

STATION	INDEX NO.	DIVISION	COUNTY	LATITUDE	LONGITUDE	ELEVATION (IN FEET)	OBSERVATION TIME AND TABLES			
							LOCAL STD TIME			
							TEMP	PRECIP	EVAP	SPECIAL SEE (NOTES)
MARYLAND										
ABERDEEN PHILLIPS FLD R	0015	06	HARFORD	39 28	76 10W	57	07	07		CH
ASSATEAGUE	0335	01	WORCESTER	38 4	75 13W	10	24	24		H
BALTIMORE WASH INTL AP R	0465	04	ANNE ARUNDEL	39 10	76 41W	156	24	24		CHJ
BELTSVILLE R	0700	04	PRINCE GEORGE'S	39 2	76 56W	145	08	08	EV	CH
BRIGHTON DAM	1125	06	MONTGOMERY	39 11	77 0W	330		07		H
CATOCTIN MTN PARK	1530	06	FREDERICK	39 39	77 29W	1610	17	17		H
CHESTERTOWN	1750	05	KENT	39 13	76 3W	40	23	23		H
CONOWINGO DAM	2060	06	HARFORD	39 39	76 11W	40	07	07		H
CUMBERLAND 2	2282	07	ALLEGANY	39 39	78 45W	730	18	18		H
CYLBURN	2308	06	BALTIMORE	39 22	76 38W	400	08	08		H
DALECARLIA RSVR	2325	04	PRINCE GEORGE'S	38 56	77 7W	150	08	08		H
DAMASCUS 3 SSW	2336	06	MONTGOMERY	39 16	77 14W	697	22	22		H
EMMITSBURG 2 SE	2906	06	FREDERICK	39 41	77 17W	403	07	07		H
FREDERICK 2 NNE	3353	06	FREDERICK	39 26	77 24W	280	07	07		H
FROSTBURG 2	3415	07	ALLEGANY	39 40	78 56W	2170	07	07		H
LAUREL 3 W	5111	04	PRINCE GEORGE'S	39 5	76 54W	400	24	07		H
MD SCI CTR BALTIMORE R	5718	04	BALTIMORE (CITY)	39 17	76 37W	20	24	24		CH
MECHANICSVILLE 5 NE	5865	03	ST MARY'S	38 28	76 42W	100	07	07		H
MILLERS 4 NE R	5934	06	CARROLL	39 43	76 48W	860	18	18		CH
NATL ARBORETUM DC	6350	04	DISTRICT OF COLUMBIA	38 55	76 58W	50	07	07		H
OAKLAND 1 SE	6620	08	GARRETT	39 25	79 24W	2420	07	07		H
OXON HILL	6800	04	PRINCE GEORGE'S	38 48	76 60W	120	08	08		H
POTOMAC FLTR PLT	7272	06	MONTGOMERY	39 2	77 15W	270		08		H
PRINCESS ANNE	7330	01	SOMERSET	38 13	75 41W	20	17	17		H
ROYAL OAK 2 SSW	7806	02	TALBOT	38 43	76 11W	10	17	17		H
SALISBURY 2N	8004	01	WICOMICO	38 24	75 36W	20	17	17		H
SALISBURY FAA AP	8005	01	WICOMICO	38 20	75 31W	48	24	24		H
SAVAGE RIVER DAM R	8065	08	GARRETT	39 31	79 8W	1495	08	08	EV	CH
SHARPSBURG 5 S	8207	07	WASHINGTON	39 24	77 43W	500	07	07		H
SMITHSBURG 2NW	8371	06	WASHINGTON	39 40	77 35W	670	08	08		H
SNOW HILL 4 N	8380	01	WORCESTER	38 14	75 23W	30	17	17		H
SOLOMONS	8405	03	CALVERT	38 19	76 27W	12	08	08		H
UPPER MARLBORO 3 NNW	9070	04	PRINCE GEORGE'S	38 52	76 47W	100	08	08	EV	H
WESTMINSTER	9440	06	CARROLL	39 34	76 59W	765	07	07		H
WILLIAMSPORT	9570	07	WASHINGTON	39 36	77 50W	360	06	06		H
DELAWARE										
BEAR 2 SW	1200	01	NEW CASTLE	39 36	75 44W	80	24	24		H
DOVER	2730	02	KENT	39 15	75 31W	30	16	16		H
LEWES	5320	02	SUSSEX	38 47	75 8W	15	17	17		H
WILMINGTON NEW CASTLE R	9595	01	NEW CASTLE	39 40	75 36W	79	24	24		CHJ
WILMINGTON PORTER RES	9605	01	NEW CASTLE	39 46	75 32W	270	24	24		H

# REFERENCE NOTES

**STATION NAMES:** Name of the city, town or locality. Figures and letters following the station names indicate the distance in miles and direction from the post office or town community center.

**DIVISIONS:** Areas within a state of similar climatological characteristics. Division averages are calculated using data from stations that record both temperature and precipitation (i.e. not precipitation alone).

**NORMALS:** The average value of the meteorological element over a time period. Effective 1 January 2002, the averaging period is 1971 to 2000. The normals for National Weather Service localities have been adjusted so as to be representative for the current observation site.

**MONTHLY DEGREE DAY TOTALS:** One heating (cooling) degree day is accumulated for each whole degree that the daily mean temperature is below (above) 65 degrees Fahrenheit.

**PRECIPITATION:** Values shown in hundredths of inches are water equivalent totals, i.e., total of liquid and melted frozen precipitation. In the "Monthly Summarized Data" table the total snow and sleet values shown in tenths of inches are unmelted amounts. The max depth on ground values of snow and sleet shown in whole inches are cumulative unmelted amounts. The number of days with .10, .50, 1.00 or more refers to water equivalents.

**PRECIPITATION QUALITY CONTROL:** The NCDC quality control process may flag precipitation data that are spatially inconsistent, exceed climatological limits, or are inconsistent with prevailing weather patterns.

**TEMPERATURE:** Original temperature values are given in the "Daily Temperature" table. Summary temperature information (averages, departures, extremes, monthly degree day totals) is based on the values labeled MAX/MIN.

**WIND:** (As shown in the "Evaporation and Wind" table) the total wind movement in miles over the evaporation pan as determined by an anemometer recorder located 6-8 inches above the pan.

## SYMBOLS AND LETTERS USED IN THE STATION INDEX TABLE

- C Station is equipped with recording rain gage (R) but values in this bulletin are from a non-recording rain gage unless indicated by an R.
- G Observations appear in the "Soil Temperatures" table.
- H Observations appear in the "Snowfall and Snow on the Ground" table.
- J Station also published as a Local Climatological Data publication.
- VAR Observation time varies.
- SR Observation time near sunrise.
- SS Observation time near sunset.

## SYMBOLS AND LETTERS USED IN THE DATA TABLES

(DAILY DATA ARE FOR THE 24 HOURS IMMEDIATELY PRECEDING OBSERVATION TIME.)

**BLANK** Entries in the "Monthly Summarized Data" table indicate no record.

**BLANK** Entries in the "Daily Precipitation" and "Snowfall and Snow on the Ground" tables indicate zero.

**BLANK** Entries in the "Daily Temperature" table indicate a missing record

- No record. Data not recorded or not received in time for publication.

+ Precipitation or temperature extremes occurred on one or more previous dates during the month.

\* Rain gage not read. Precipitation is included in the amount following the asterisks. Time distribution may not be known. A \* preceding the monthly total indicates precipitation amount is being carried forward to next month's total, and may include amounts from the previous month(s).  
a As a subscript, indicates accumulated total.

A Amount of precipitation is the total of observer's entries for the current month. It may include precipitation that occurred during the previous month. Refer to earlier bulletin to determine date of last reading. (Hawaii stations)

F Monthly calculation flagged value. F is appended to average and/or total values computed which exclude one or more daily data values that have been flagged by the GHCN-Daily Dataset

M Insufficient or partial data. M is appended to average and/or total values computed with 1-9 daily values missing. M appears alone if 10 or more daily values are missing, (8 or more for wind and evaporation).

N Indicates snow fall or Snowdepth totals are computed with one or more missing days.

R Amounts from recording rain gage.

T Trace. An amount too small to measure.

**SEASONAL TABLES:** Monthly and seasonal snowfall and heating degree days for the 12 months ending with the June data are published in the July issue of this bulletin. Cooling degree days for the calendar year are published in the "Climatological Data Annual Summary."

Information concerning the history of changes in locations, exposure, etc. of substations is kept on file at the National Climatic Data Center. Historical information of regular National Weather Service Offices may be obtained from the "Local Climatological Data" annual publication. The contents of this publication may be reprinted or otherwise used freely, with proper credit to the National Climatic Data Center. The data are also available digitally.

Effective with the January 2011 Data-Month, COOP Observer Names are no longer included in the Monthly and Annual Climatological Data Publications. This information is not published to ensure the privacy of personal information pursuant to Section 208 of the E-Government Act of 2002 (44 USC 3601).

The GHCN-Daily Quality Control Flags shown below are displayed as superscripts with the data. For more Information on Global Historical Climatology Network - Daily and flags, see:  
<http://www.ncdc.noaa.gov/oa/climate/ghcn-daily/>  
and

Comprehensive Automated Quality Assurance of Daily Surface Observations.  
Durre, Imke, Matthew J. Menne, Byron E. Gleason, Tamara G. Houston,  
Russell S. Vose, 2010: J. Appl. Meteor. Climatol., 49, 16151633.  
doi: 10.1175/2010JAMC2375.1

Blank = Passed All checks

D = failed duplicate check

G = failed gap check

I = failed internal consistency check

K = failed streak/frequent-value check

L = failed check on length of multiday period

M = failed megaconsistency check

N = failed naught check

O = failed climatological outlier check

R = failed lagged range check

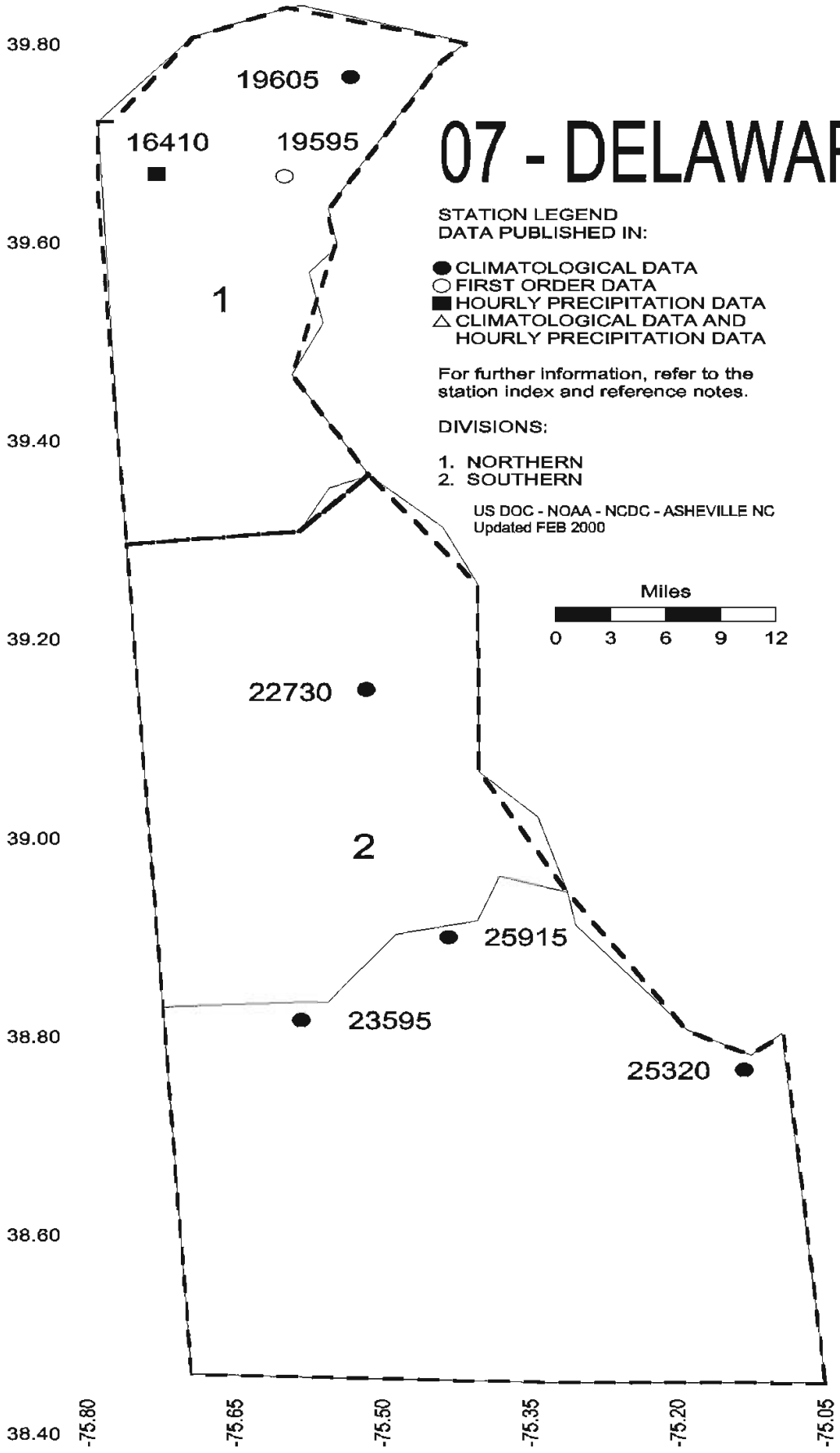
S = failed spatial consistency check

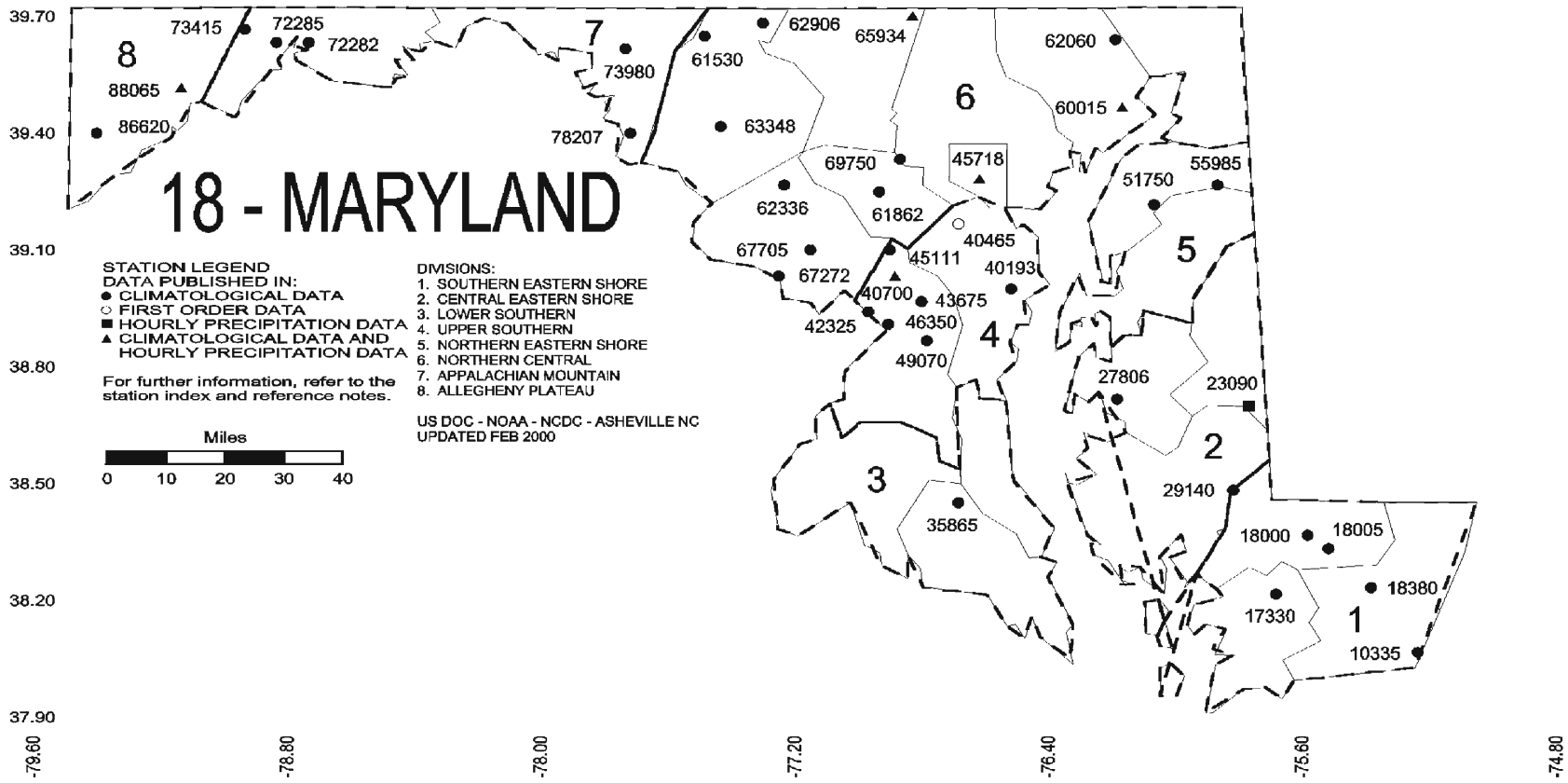
T = failed temporal consistency check

W = temperature too warm for snow

X = failed bounds check

# 07 - DELAWARE







NOAA\National Climatic Data Center  
Attn: User Engagement & Services Branch  
151 Patton Avenue  
Asheville, NC 28801-5001

PRSRT STD  
POSTAGE & FEES PAID  
United States Department of Commerce  
NOAA Permit No. G-19

**OFFICIAL BUSINESS**  
**PENALTY FOR PRIVATE USE \$300**  
**ADDRESS CORRECTION REQUESTED**

To change your address, please return a copy of the mailing label along with your new address to:

NOAA\National Climatic Data Center  
Attn: User Engagement & Services Branch  
151 Patton Avenue  
Asheville, NC 28801-5001

Customer Services Number: (828) 271-4800, option 2  
TDD : (828) 271-4010  
Fax number: (828) 271-4876

NCDC now offers an annual online subscription for the *Climatological Data* publication. When you purchase this subscription service, you will have **immediate online access** to all previous Climatological Data publications. Your subscription is valid for one year after purchase.

**The total cost is \$42 for online delivery (including back issues).**

To order this and other subscriptions online with your credit card, go to:

**<http://www.ncdc.noaa.gov/oa/mpp/>** and choose subscription.