



CLIMATOLOGICAL DATA

MARYLAND AND DELAWARE



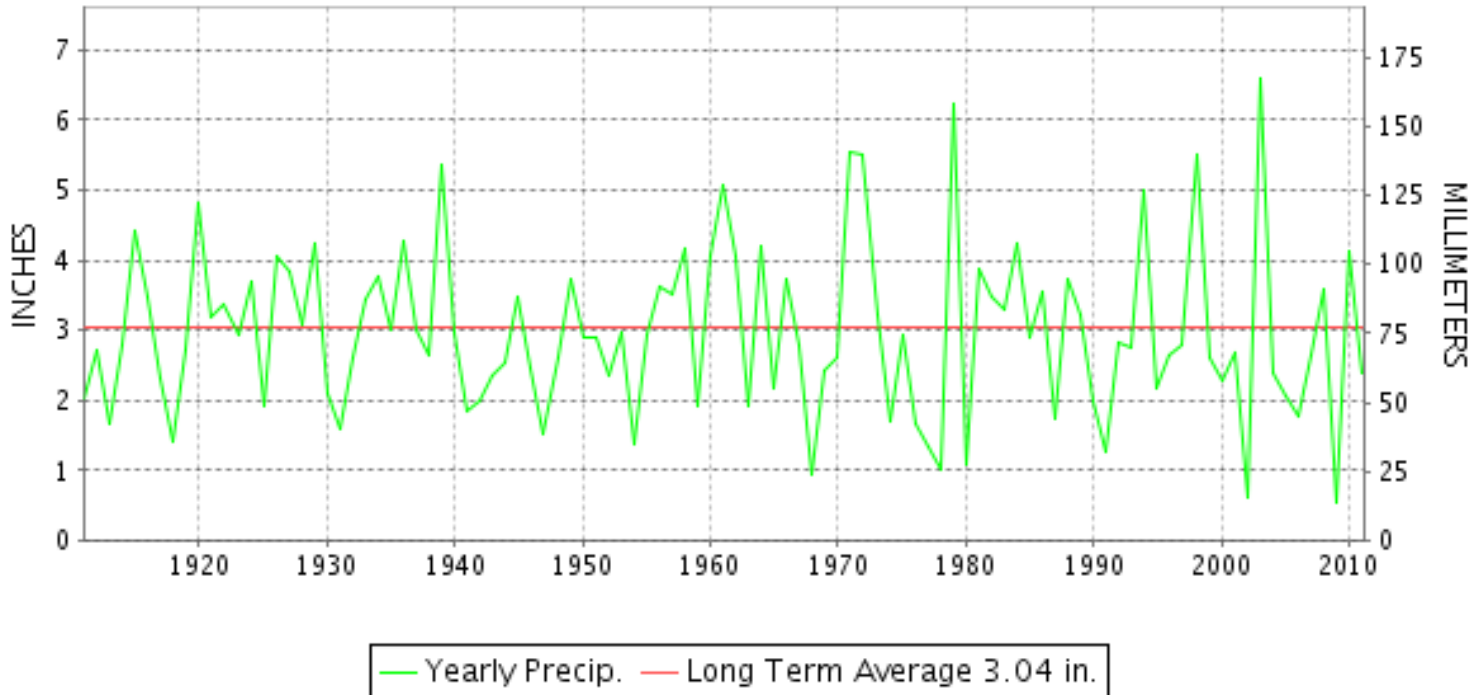
FEBRUARY 2011

VOLUME 115 NUMBER 02

ISSN 0145-0549

GHCND Ver: 2.91-upd-2012021008

FEBRUARY PRECIPITATION BY YEAR



TEMPERATURE AND PRECIPITATION EXTREMES

MARYLAND

HIGHEST TEMPERATURE	78	FEBRUARY 19	NATL ARBORETUM DC
LOWEST TEMPERATURE	-5	FEBRUARY 12+	OAKLAND 1 SE
GREATEST TOTAL PRECIPITATION	3.58		FROSTBURG 2
LEAST TOTAL PRECIPITATION	1.13		MECHANICSVILLE 5 NE
GREATEST 1 DAY PRECIPITATION	1.12	FEBRUARY 02	EMMITSBURG 2 SE
GREATEST TOTAL SNOWFALL	12.3		OAKLAND 1 SE
GREATEST DEPTH OF SNOW OR ICE	14		OAKLAND 1 SE

"I certify that this is an official publication of the National Oceanic and Atmospheric Administration (NOAA) It is compiled using information from weather observing sites supervised by NOAA/National Weather Service and received at the National Climatic Data Center(NCDC), Asheville, North Carolina 28801."

Director
National Climatic Data Center

noaa

National
Oceanic and
Atmospheric Administration

National
Environmental Satellite, Data
and Information Service

National
Climatic Data Center
Asheville, North Carolina

DELAWARE

HIGHEST TEMPERATURE	72
LOWEST TEMPERATURE	9
GREATEST TOTAL PRECIPITATION	2.90
LEAST TOTAL PRECIPITATION	2.04
GREATEST 1 DAY PRECIPITATION	1.00
GREATEST TOTAL SNOWFALL	5.0
GREATEST DEPTH OF SNOW OR ICE	8

FEBRUARY 18
FEBRUARY 23

FEBRUARY 25

DOVER
BEAR 2 SW
WILMINGTON NEW CASTLE
WILMINGTON PORTER RES
WILMINGTON PORTER RES
2 STATIONS
WILMINGTON PORTER RES

MONTHLY STATION AND DIVISION SUMMARY

STATION	TEMPERATURE (°F)														PRECIPITATION (IN)										
	AVERAGE MAXIMUM	AVERAGE MINIMUM	AVERAGE	DEPARTURE FROM NORMAL	HIGHEST	DATE	LOWEST	DATE	HEATING DEG. DAYS	COOLING DEG. DAYS	NO. OF DAYS				TOTAL	DEPARTURE FROM NORMAL	GREATEST 24 HOURS	DATE	ICE PELLETS, SNOW			NO OF DAYS			
											MAX		MIN						TOTAL	MAX DEPTH ON GROUND	DATE	10 OR MORE	50 OR MORE	1 00 OR MORE	
											>=90	<=32	<=32	<=0											
MARYLAND SOUTHERN EASTERN SHORE 01																									
ASSATEAGUE	51.1	31.4	41.3	3.3	72	18	10	11	660	0	0	0	15	0	1.73	-1.86	0.57	28	N 1.0	0			6	1	0
PRINCESS ANNE	55.9M	27.1M	41.5M		73	18	7	11	465	0	0	0	14	0	M				0.0	0					
SALISBURY 2N	M	M	M											M					0.0	0					
SALISBURY FAA AP	52.0	28.8	40.4	2.5	73	28	12	11	685	0	0	0	18	0	1.71	-1.85	0.67	28	0.0	0			3	1	0
SNOW HILL 4 N	55.8F	29.7	42.8F	3.8	74	28	11	11	616	0	0	0	17	0	1.17	-2.24	0.48	02	N 1.3	0			4	0	0
--DIVISIONAL DATA----->			41.5	3.7											1.54	-1.88									
CENTRAL EASTERN SHORE 02																									
ROYAL OAK 2 SSW	50.8	31.4	41.1	2.6	70	18	16	11	662	0	0	0	16	0	2.40	-0.95	0.75	28	N 2.1	N 1	23		5	3	0
--DIVISIONAL DATA----->			41.1	4.2											2.40	-0.91									
LOWER SOUTHERN 03																									
MECHANICSVILLE 5 NE	50.7	26.0	38.4	0.5	75	19	14	12+	742	0	0	1	25	0	1.13	-2.24	0.62	02	N 0.8	N 1	22		3	1	0
SOLOMONS	49.8	32.1M	41.0M		73	19	20	09	642	0	0	1	15	0	FM 0.92		0.68	02	0.7	1	22		2	1	0
--DIVISIONAL DATA----->			39.7	2.8											1.03	-1.99									
UPPER SOUTHERN 04																									
BALTIMORE WASH INTL AP	49.1	27.8	38.5	3.0	74	18	13	11	735	0	0	1	21	0	2.69	-0.33	0.69	02	2.5	3	22		7	3	0
BELTSVILLE	47.5	27.6	37.6	2.2	75	19	15	11	763	0	0	2	22	0	1.90	-0.79	0.81	02	1.0	2	04		5	1	0
DALECARLIA RSVR	46.4	28.3	37.4	0.0	73	19	16	11	768	0	0	2	20	0	1.80	-1.21	0.85	02	0.0	1	05		4	1	0
LAUREL 3 W	48.1	30.0	39.1	2.8	74	18	17	09	721	0	0	2	20	0	M				0.0	0					
MD SCI CTR BALTIMORE	49.5	32.7	41.1		75	18	20	09	661	0	0	1	13	0	2.58		0.74	02	0.0	0			7	2	0
NATL ARBORETUM DC	49.5M	28.5M	39.0M		78	19	14	11	664	0	0	0	18	0	M 1.63		0.81	02	N 0.5	N 2	23		4	1	0
OXON HILL	50.0	28.3	39.2		75	19	17	11	717	0	0	1	21	0	1.58		0.78	02	1.0	5	22		6	1	0
UPPER MARLBORO 3 NNW	49.4	26.0	37.7	2.3	75	19	12	11	757	0	0	1	25	0	1.64	-1.12	0.78	02	N 1.0	N 3	10		5	1	0
--DIVISIONAL DATA----->			38.7	2.4											1.97	-0.95									
NORTHERN EASTERN SHORE 05																									
CHESTERTOWN	46.2F	28.1	37.2F	1.3	70	18	15	23+	772	0	0	4	21	0	2.96	-0.07	0.74	25	4.6	N 4	22		5	4	0
--DIVISIONAL DATA----->			37.2	1.9											2.96	-0.06									
NORTHERN CENTRAL 06																									
ABERDEEN PHILLIPS FLD	45.2M	26.1M	35.7M		74	19	12	11	763	0	0	3	23	0	FM 2.25		0.72	02	4.5	4	22		4	3	0
BRIGHTON DAM	M	M	M												2.60	-0.58	0.80	02	N 2.0	0			5	3	0
CATOCTIN MTN PARK	44.0	26.5	35.3	3.1	68	18	10	09	826	0	0	2	21	0	2.88	-0.45	0.73	02	0.0	0			8	2	0
CONOWINGO DAM	44.9	23.9	34.4	0.7	72	19	8	11	853	0	0	1	26	0	2.49	-0.43	0.56	02	N 8.0	4	22		8	1	0
CYLBURN	43.8	25.6	34.7		72	19	11	11	845	0	0	4	25	0	FM 2.36		0.85	02	N 3.3	7	01		4	2	0
DAMASCUS 3 SSW	44.7	28.1	36.4		71	18	15	23	795	0	0	4	20	0	2.84		0.81	02	3.4	8	21		6	2	0

MONTHLY STATION AND DIVISION SUMMARY

STATION	TEMPERATURE (°F)											PRECIPITATION (IN)												
	AVERAGE MAXIMUM	AVERAGE MINIMUM	AVERAGE	DEPARTURE FROM NORMAL	HIGHEST	DATE	LOWEST	DATE	HEATING DEG. DAYS	COOLING DEG. DAYS	NO. OF DAYS				TOTAL	DEPARTURE FROM NORMAL	GREATEST 24 HOURS	DATE	ICE PELLETS, SNOW			NO OF DAYS		
											MAX		MIN						TOTAL	MAX DEPTH ON GROUND	DATE	10 OR MORE	50 OR MORE	1 00 OR MORE
											>=90	<=32	<=32	<=0										
EMMITSBURG 2 SE	43.1	22.6	32.9	-1.2	73	19	2	23	894	0	0	4	25	0	2.74	-0.23	1.12	02	N 4.5	0		8	1	1
FREDERICK 2 NNE	45.2	24.2F	34.7F		74	19	10	24+	837	0	0	4	22	0	2.31		0.87	02	N 4.3	5	02	7	1	0
MILLERS 4 NE	44.5	25.8	35.2	1.8	70	18	8	11	832	0	0	3	21	0	3.00	0.10	1.06	02	6.8	9	21	6	2	1
POTOMAC FLTR PLT	M	M	M												M				0.0	0				
SMITHSBURG 2NW	42.6	19.9	31.3		69	19	2	23	938	0	0	5	27	0	M 2.53		1.00	02	N 5.0	5	22	5	2	1
WESTMINSTER	M	M	M												M				0.0	0				
--DIVISIONAL DATA-----> APPALACHIAN MOUNTAIN 07			34.5	0.5											2.60	-0.32								
CUMBERLAND 2	47.4	28.2	37.8	3.9	72	18	14	11	759	0	0	2	20	0	2.85	0.42	0.89	22	N 4.0	6	01	5	3	0
FROSTBURG 2	39.1	20.0	29.6	2.3	63	19	7	11+	986	0	0	8	26	0	3.58	0.48	1.10	22	N 5.6	N 8	18	8	3	1
SHARPSBURG 5 S	45.9	23.1	34.5		74	19	9	12+	850	0	0	4	24	0	2.26		0.71	22+	3.7	N 5	25	5	2	0
WILLIAMSPORT	44.2	21.4	32.8		74	19	8	12+	899	0	0	4	27	0	3.32		0.86	02	4.0	4	22	7	3	0
--DIVISIONAL DATA-----> ALLEGHENY PLATEAU 08			33.7	1.6											3.00	0.38								
OAKLAND 1 SE	41.8	19.1	30.5	1.2	63	28+	-5	12+	961	0	0	9	26	2	3.16	-0.02	0.60	25	12.3	14	01	9	2	0
SAVAGE RIVER DAM	39.9M	21.3	30.6M		64	19	5	12+	926	0	0	6	27	0	M 2.99		0.97	22	0.0	8	02	6	3	0
--DIVISIONAL DATA-----> DELAWARE NORTHERN 01			30.6	2.1											3.08	-0.01								
BEAR 2 SW	46.5	25.9	36.2		70	18	9	23	802	0	0	2	21	0	2.83		0.90	25	5.0	5	11	6	2	0
WILMINGTON NEW CASTLE	45.5	26.3	35.9	1.7	70	18	11	11	808	0	0	4	21	0	2.90	0.09	0.89	25	5.0	6	11	6	2	0
WILMINGTON PORTER RES	44.4	27.4	35.9		67	18	13	09	810	0	0	4	22	0	2.04		1.00	25	N 0.6	8	01	4	2	1
--DIVISIONAL DATA-----> SOUTHERN 02			36.0	1.7											2.59	-0.25								
DOVER	52.1	28.9F	40.5F	2.8	72	18	14	09	670	0	0	1	21	0	2.53	-0.51	0.87	02	N 4.7	3	22	5	3	0
LEWES	M	M	M												M				0.0	0				
--DIVISIONAL DATA----->			40.5	4.1											2.53	-0.65								

DAILY PRECIPITATION (INCHES)

STATION	TOTAL	DAY OF MONTH																														
		01	02	03	04	05	06	07	08	09	10	11	12	13	14	15	16	17	18	19	20	21	22	23	24	25	26	27	28	29	30	31
MARYLAND																																
SOUTHERN																																
EASTERN SHORE 01																																
ASSATEAGUE	1.73	0.06	0.49		0.04		0.11	0.02		0.06											0.02	0.10		0.13	0.13						0.57	
PRINCESS ANNE	M 0.00 ^L	0.47 ^L			-	-		0.11		0.22		-	-							-	-	0.10			0.25	-	-		0.05			
SALISBURY 2N	M	-	-	-	-	-	-	-	-	-	-	-	-	-	-	-	-	-	-	-	-	-	-	-	-	-	-	-	-	-		
SALISBURY FAA AP	1.71	T	0.46		0.05		0.04			0.09											0.02	0.09		0.09	0.20				0.67			
SNOW HILL 4 N	1.17	0.03	0.48		0.05			0.12		0.08												0.12			0.29				T			
CENTRAL																																
EASTERN SHORE 02																																
FEDERALSBURG R	M	-	-	-	-	-	-	-	-	-	-	-	-	-	-	-	-	-	-	-	-	-	-	-	-	-	-	-	-	-		
ROYAL OAK 2 SSW	2.40	0.03	0.63		0.14		T	T		0.05												T	0.27			0.53			0.75			
LOWER SOUTHERN 03																																
MECHANICSVILLE 5 NE	1.13	T	0.62	T		0.02	0.09		T		0.05												0.13			0.22	T		T			
SOLOMONS	FM 0.92	T	0.68			-	0.10 ^L				0.03											-	0.10 ^L			0.20			0.01			
UPPER SOUTHERN 04																																
BALTIMORE WASH INTL AP R	2.69	0.12	0.69		0.23		T	T	T	T											0.03	0.27	0.32		0.02	0.51			0.50			
BELTSVILLE R	1.90	T	0.81	0.01	0.08	0.13														0.01		0.01	0.30			0.25	0.08		0.22			
DALECARLIA RSVR	1.80		0.85		0.09	0.16																				0.29			0.41			
LAUREL 3 W	M	-	-	-	0.28	-	-	-	-	0.02	-	-	-	-	-	-	-	-	-	-	0.05	0.13	0.28	-	0.01	0.50	-	-	0.61			
MD SCI CTR BALTIMORE R	2.58	0.10	0.74		0.26			0.01													0.01	0.27	0.24		0.01	0.51			0.43			
NATL ARBORETUM DC	M 1.63	T	0.81		0.04	0.12		T			T															0.28	0.05		-			
OXON HILL	1.58	T	0.78	0.01	0.02	0.12		0.02			0.04												T	0.13		0.18	0.16		0.12			
UPPER MARLBORO 3 NNW	1.64	T	0.78		0.07	0.04					0.03															0.22	0.13		0.10			
NORTHERN																																
EASTERN SHORE 05																																
CHESTERTOWN	2.96	0.01	0.71		0.23			T	T	0.02												T	0.07	0.51		T	0.74		0.67			
NORTHERN CENTRAL 06																																
ABERDEEN PHILLIPS FLD	FM 2.25	0.03	0.72	0.02		-	-	0.22 ^L	0.02		0.01																		0.42			
BRIGHTON DAM	2.60	T	0.80		0.20				T																	0.05	0.48		0.50			
CATOCTIN MTN PARK	2.88	0.17	0.73		0.28	0.10	0.04																	0.47	0.04	0.50			0.30			
CONOWINGO DAM	2.49	0.10	0.56		0.06	0.30		0.02																		0.32	0.42		0.28			
CYLBURN	FM 2.36	0.31 ^L	0.85	T	0.08																					0.49	0.20		-			
DAMASCUS 3 SSW	2.84	T	0.81		0.22		T	0.01	T													0.01			0.03	0.47		0.44				
EMMITSBURG 2 SE	2.74	0.10	1.12		0.12	0.25																				0.44	0.15		0.26			
FREDERICK 2 NNE	2.31	0.01	0.87		0.12																					0.38	0.10	0.02	0.22			
MILLERS 4 NE R	3.00	0.01	1.06		0.28	0.04		0.03																	T	0.46		0.38				
POTOMAC FLTR PLT	M	-	0.66	-	-	-	-	-	-	-	-	-	-	-	-	-	-	-	-	-	-	-	-	-	-	0.27	-	-	-			
SMITHSBURG 2NW	M 2.53	-	1.00		0.10			0.23																		0.40			-			
WESTMINSTER	M	-	-	-	-	-	-	-	-	-	-	-	-	-	-	-	-	-	-	-	-	-	-	-	-	-	-	-	-			
APPALACHIAN																																
MOUNTAIN 07																																

DAILY PRECIPITATION (INCHES)

STATION	TOTAL	DAY OF MONTH																																
		01	02	03	04	05	06	07	08	09	10	11	12	13	14	15	16	17	18	19	20	21	22	23	24	25	26	27	28	29	30	31		
CUMBERLAND 2	2.85	T	0.60	0.01			0.09		0.01	T					0.01		T					0.24	0.89	T		0.60	T		0.40					
FROSTBURG 2	3.58	0.11	0.69	T		T	0.17		0.04	T				T		0.04						0.44	1.10	T		0.55	0.15		0.29					
SHARPSBURG 5 S	2.26	T	0.71			0.15	0.09		T													0.03	0.71			0.30	0.08		0.19					
WILLIAMSPORT	3.32	0.09	0.86			0.13	0.22															0.06	0.70			0.46	0.60		0.20					
ALLEGHENY PLATEAU 08																																		
OAKLAND 1 SE	3.16	0.16	0.55	0.05			0.28		0.12	0.17	0.04		0.04	0.07		0.05		T				0.40	0.07	0.05		0.60	0.18		0.33					
SAVAGE RIVER DAM R	M 2.99	0.03	0.56	-			-		-	-			-	-		0.03						0.33	0.97	-		0.58	0.14		0.35					
DELAWARE																																		
NORTHERN 01																																		
BEAR 2 SW	2.83	0.03	0.77			0.20		0.01		0.02	T								T		T	0.18	0.24		0.02	0.90			0.46					
NEWARK UNIV FARM R	M	-	-	-	-	-	-	-	-	-	-	-	-	-	-	-	-	-	-	-	-	-	-	-	-	-	-	-	-	-	-	-	-	
WILMINGTON NEW CASTLE R	2.90	0.03	0.77			0.26		0.02	T	0.02		T							T		T	0.22	0.20		0.04	0.89	T		0.45					
WILMINGTON PORTER RES	2.04	0.01	0.18			0.25		T	0.02	T											0.01	0.01	0.01		T	1.00			0.55					
SOUTHERN 02																																		
DOVER	2.53	0.03	0.87			0.22			0.02		0.02																0.16		0.63		0.58			
LEWES	M	-	-	-	-	-	-	-	-	-	-	-	-	-	-	-	-	-	-	-	-	-	-	-	-	-	-	-	-	-	-	-	-	

DAILY TEMPERATURES (°F)

STATION	OB. TIME	MAX/MIN	DAY OF MONTH																															AVERAGE					
			01	02	03	04	05	06	07	08	09	10	11	12	13	14	15	16	17	18	19	20	21	22	23	24	25	26	27	28	29	30	31						
MARYLAND SOUTHERN EASTERN SHORE 01																																							
ASSATEAGUE	24	MAX	45	54	47	39	48	53	50	46	34	38	43	49	47	66	54	47	63	72	62	54	59	40	45	47	67	48	56	59							51.1		
		MIN	32	35	31	28	35	35	27	34	21	29	10	18	27	40	33	20	37	42	47	32	37	28	27	25	41	31	35	42							31.4		
PRINCESS ANNE	17	MAX	40	65	60	38			56	53	43	35	45			65	68	55	67	73			57	55	49	54	68										M		
		MIN	33	30	23	26			27	27	18	20	7			40	25	15	33	54			32	20	12	16	36										M		
SALISBURY 2N	17	MAX																																				M	
		MIN																																					M
SALISBURY FAA AP	24	MAX	40	64	36	40	56	48	53	43	34	33	44	48	53	67	45	54	68	72	62	49	58	38	48	55	69	49	58	73							52.0		
		MIN	33	34	28	24	36	29	25	27	17	15	12	19	25	39	22	20	38	53	36	30	32	24	20	21	37	26	37	47							28.8		
SNOW HILL 4 N	17	MAX	42	63	63	41	54	54	53	48	37	33	48	49	55	66	66	55	68	73	72	55	60	47	49	52	69	56 ¹	60	74							55.8		
		MIN	31	37	29	24	36	34	25	37	16	27	11	19	24	41	32	20	33	42	45	22	39	27	18	20	42	25	31	44							29.7		
CENTRAL EASTERN SHORE 02																																							
ROYAL OAK 2 SSW	17	MAX	35	60	47	40	42	49	52	46	34	33	45	47	52	67	55	54	68	70	61	49	49	39	44	50	63	47	56	68							50.8		
		MIN	30	33	29	25	34	35	26	33	18	26	16	22	30	44	32	23	37	45	47	32	39	25	21	24	43	31	35	45							31.4		
LOWER SOUTHERN 03																																							
MECHANICSVILLE 5 NE	07	MAX	30	42	64	36	40	44	48	49	40	34	33	44	48	54	69	46	56	70	75	59	59	59	36	46	57	69	48	64							50.7		
		MIN	27	27	28	23	25	30	25	25	17	16	14	14	20	26	31	24	24	40	48	29	29	27	20	20	24	28	28	38							26.0		
SOLOMONS	08	MAX	32	50	65	36	39	45	45	43	40	33	35	45	47	55	67	45	56	63	73	56	51	58	34	41	68	50	50	71							49.8		
		MIN	29	29	30	27	33		29	33	20	23	23	27	30	45	33	29	35	46	48	33	37	27	26	29	38	32	35	42							32.1		
UPPER SOUTHERN 04																																							
BALTIMORE WASH INTL AP	24	MAX	34	46	34	41	40	47	48	39	34	32	45	45	53	67	46	57	71	74	56	51	42	37	45	50	67	46	61	68							49.1		
		MIN	28	31	23	22	33	30	26	22	16	16	13	18	25	41	24	24	41	51	35	29	27	23	18	23	34	32	32	42							27.8		
BELTSVILLE	08	MAX	30	34	47	34	41	41	46	50	37	34	31	44	44	54	66	44	57	70	75	54	48	42	34	47	52	65	48	61							47.5		
		MIN	26	29	27	22	23	33	27	28	17	21	15	18	24	32	31	24	31	39	48	30	33	23	19	24	28	33	31	36							27.6		
DALECARLIA RSVR	08	MAX	29	36	48	33	41	41	43	48	36	35	32	43	45	54	67	43	57	69	73	51	47	43	33	45	52	48	47	61							46.4		
		MIN	26	27	27	23	25	34	27	27	18	22	16	19	25	33	32	27	33	39	47	31	32	24	22	22	34	33	32	34							28.3		
LAUREL 3 W	24	MAX	32	46	33	41	38	46	47	40	33	30	42	42	52	65	44	55	70	74	60	50	40	35	44	50	65	46	60	68							48.1		
		MIN	26	31	25	24	31	35	30	28	17	21	18	25	32	43	29	28	42	52	34	29	28	21	20	28	37	32	34	41							30.0		
MD SCI CTR BALTIMORE	24	MAX	35	49	36	43	42	48	47	43	36	32	43	44	54	67	45	58	67	75	58	50	43	37	44	49	67	46	58	69							49.5		
		MIN	30	34	29	28	34	37	34	24	20	26	24	27	34	42	33	32	42	48	37	34	28	24	25	31	39	36	40	44							32.7		
NATL ARBORETUM DC	07	MAX	33	37	52	37	43	44	49	53	40	36	37	46	48	56	69	49	60	73	78	58	50	45	38	50	54	52	50								49.5		
		MIN	26	27	27	23		23	26	30	19	21	14	20	27	34	30	25	35	46	48	30	40	24	20	25	33	35	34								28.5		
OXON HILL	08	MAX	32	35	56	36	40	42	50	51	42	33	33	46	47	54	68	47	59	72	75	61	52	52	36	48	52	67	51	62							50.0		
		MIN	27	28	27	24	25	33	27	27	19	21	17	18	23	33	31	29	30	42	48	31	31	25	22	23	30	33	34	34							28.3		
UPPER MARLBORO 3 NNW	08	MAX	30	36	52	36	42	43	49	51	39	35	33	46	46	54	67	46	58	71	75	55	53	53	37	48	52	66	48	62							49.4		
		MIN	26	28	27	22	22	32	25	24	17	17	12	13	19	33	31	23	30	44	48	29	29	24	19	18	23	32	31	31							26.0		
NORTHERN EASTERN SHORE 05																																							
CHESTERTOWN	23	MAX	32	46	34	37	39	44	48	40	31	30	41	43	50	65	41	52	66	70	55 ¹	45	42	31	39	47	65	45	57	67							46.2		

DAILY TEMPERATURES (°F)

STATION	OB. TIME	MAX/MIN	DAY OF MONTH																															AVERAGE					
			01	02	03	04	05	06	07	08	09	10	11	12	13	14	15	16	17	18	19	20	21	22	23	24	25	26	27	28	29	30	31						
NORTHERN CENTRAL 06 ABERDEEN PHILLIPS FLD		MIN	27	32	26	23	31	32	27	26	15	19	15	20	26	41	26	23	38	48	35	30	26	21	15	20	37	31	35	43							28.1		
	07	MAX	32	35	47	36	36	39	45	45	40	32	31	41			64	42	53	66	74	48	45	40	36	43	47	58	44	57							45.2		
CATOCTIN MTN PARK		MIN	24	30	29	21	23	31	26	27	15	17	12	13		36	32	23	23	41	47	30	30	22	15	17	23	30	32	35							26.1		
	17	MAX	36	43	33	38	33	40	47	38	26	27	38	37	46	56	41	52	65	68	64	43	38	33	44	41	49	42	56	57							44.0		
CONOWINGO DAM		MIN	21	28	22	19	29	30	27	23	10	14	12	22	28	39	23	25	45	50	36	25	28	15	14	24	34	27	33	40							26.5		
	07	MAX	34	36	45	36	36	34	46	46	40	34	31	42	44	48	60	38	52	63	72	47	48	40	37	45	44	59	43	58							44.9		
CYLBURN		MIN	17	25	25	18	18	30	25	28	13	18	8	10	20	25	32	30	30	35	42	32	22	10	12	20	29	30	32							23.9			
	08	MAX	29	33	45	32	38	38	42	43	35	31	27	40	40	49	62	41	54	66	72	48	44	38	33	41	44	60	43	59							43.8		
DAMASCUS 3 SSW		MIN	19	27	24	20	24	31	26	26	14	16	11	13	26	32	28	27	29	42	44	28	30	18	15	15	28	31	32	40							25.6		
	22	MAX	34	43	30	37	36	42	44	36	30	27	40	40	48	60	40	54	67	71	58	44	36	30	38	46	60	42	59	59							44.7		
EMMITSBURG 2 SE		MIN	24	30	23	21	32	33	28	20	16	18	16	23	29	39	27	28	40	52	35	28	27	17	15	26	34	29	35	42							28.1		
	07	MAX	29	33	44	33	36	40	41	42	35	30	28	39	39	48	60	42	54	68	73	47	46	37	30	37	41	53	45	58							43.1		
FREDERICK 2 NNE		MIN	11	26	24	18	24	31	26	25	16	17	9	10	26	30	26	23	26	39	42	27	29	15	2	3	11	29	31	36							22.6		
	07	MAX	29	33	47	35	39	41	43	44	36	31	31	42	42	52	62	44	57	70	74	50	45	38	30	39	44	57	48	63							45.2		
MILLERS 4 NE		MIN	15	26	25	23	29 ¹	32	26	25	18	19	12	12	22	30 ¹	29	24	25	40	42	30	30	18	10	10	18	32	33	34							24.2		
	18	MAX	33	44	36	36	34	41	45	37	27	27	37	37	47	57	43	53	67	70	66	45	40	30	41	42	56	44	55	57							44.5		
SMITHSBURG 2NW		MIN	23	30	21	16	28	31	25	24	11	17	8	17	23	41	26	24	39	48	35	27	29	14	10	21	36	26	33	39							25.8		
	08	MAX	29	36	43	31	35	37	40	40	32	31	28	41	37	47	55	40	56	67	69	50	41	37	37	38	45	53	45	53							42.6		
WESTMINSTER		MIN	6	27	22	14	21	17	23	24	10	14	8	9	24	36	24	23	31	31	30	24	25	12	2	4	20	20	29	26							19.9		
	07	MAX MIN																																				M M	
APPALACHIAN MOUNTAIN 07																																							
CUMBERLAND 2		MIN	35	45	35	38	40	39	42	37	30	32	42	40	56	57	48	63	71	72	65	46	44	34	44	41	52	48	68	62							47.4		
	18	MAX	26	30	21	18	29	31	29	29	15	16	14	23	26	37	26	25	37	44	40	25	34	20	27	25	34	28	36	45							28.2		
FROSTBURG 2		MIN	23	33	38	24	40	35	31	41	23	23	21	33	31	47	47	40	54	61	63	42	47	48	26	39	41	46	39	59							39.1		
	07	MAX	15	22	14	13	15	26	24	20	7	8	7	12	21	29	19	18	25	41	32	19	19	14	15	23	25	21	23	33							20.0		
SHARPSBURG 5 S		MIN	29	36	47	34	40	40	44	44	35	32	31	44	42	56	62	44	59	72	74	51	45	39	31	41	45	56	48	64							45.9		
	07	MAX	13	26	24	18	18	32	24	24	13	15	9	9	22	28	27	24	33	35	44	28	27	15	11	10	26	26	29	36							23.1		
WILLIAMSPORT		MIN	30	45	46	35	41	46	44	40	34	29	32	41	31	54	44	46	40	67	74	53	46	38	38	44	40	45	53	62							44.2		
	06	MAX	12	23	24	19	20	26	16	24	12	12	8	8	23	24	24	24	22	30	44	26	24	22	16	16	18	25	25	31							21.4		
ALLEGHENY PLATEAU 08																																							
OAKLAND 1 SE		MIN	30	49	50	26	42	43	31	41	23	22	21	31	30	47	48	39	55	60	63	43	53	53	26	36	49	53	42	63							41.8		
	07	MAX	19	30	13	9	12	26	22	19	6	7	-5	-5	20	29	18	18	32	33	32	16	20	17	18	23	24	23	24	34							19.1		
SAVAGE RIVER DAM		MIN	25	33	35	26	39	37	37	41	27	24	24	33	34	49	51	38	55	62	64	45	48	50	27	36	40	42	56								39.9		
	08	MAX	21	24	19	12	12	28	26	25	12	12	5	5	20	21	23	23	23	32	31	22	22	20	20	25	27	26	27	34							21.3		
MIN																																							
DELAWARE NORTHERN 01																																							
BEAR 2 SW		MIN	34	46	33	36	40	44	45	40	31	29	41	42	50	64	41	52	67	70	55	45	41	34	42	46	64	44	58	67							46.5		
	24	MAX	28	32	18	18	28	27	24	22	15	13	11	17	22	41	22	20	40	52	34	30	25	15	9	18	35	31	34	43							25.9		

DAILY TEMPERATURES (°F)

STATION	OB. TIME	MAX/MIN	DAY OF MONTH																															AVERAGE	
			01	02	03	04	05	06	07	08	09	10	11	12	13	14	15	16	17	18	19	20	21	22	23	24	25	26	27	28	29	30	31		
WILMINGTON NEW CASTLE	24	MAX MIN	32 27	43 30	32 22	35 19	39 29	41 29	43 26	39 20	30 14	28 16	40 11	42 17	50 25	62 40	40 24	52 23	66 42	70 44	54 33	45 25	41 24	34 21	42 14	43 20	64 33	43 32	58 35	66 42				45.5 26.3	
WILMINGTON PORTER RES	24	MAX MIN	31 26	41 28	41 23	35 20	38 28	40 31	43 29	38 20	28 13	27 18	38 16	39 23	47 26	59 39	48 27	64 41	67 47	53 32	42 26	39 23	32 20	39 21	42 25	61 34	60 31	53 34	58 40				44.4 27.4		
SOUTHERN 02																																			
DOVER	16	MAX MIN	35 26	57 31	47 26	40 22	42 32	50 33	51 28	43 34	34 14	31 25	45 19	46 24	53 25	64 42	63 29	54 19	70 43	72 49	68 48	48 28	46 28	43 22	41 15	50 25	71 50 ^s	67 31	58 31	71 32				52.1 28.9	
LEWES	17	MAX MIN																																	M M

SNOWFALL AND SNOW ON GROUND (INCHES)

STATION		DAY OF MONTH																														
		01	02	03	04	05	06	07	08	09	10	11	12	13	14	15	16	17	18	19	20	21	22	23	24	25	26	27	28	29	30	31
MARYLAND SOUTHERN EASTERN SHORE 01																																
ASSATEAGUE	SNOWFALL	-	-	-	-	-	-	-	-	-	09	-	-	-	-	-	-	-	-	-	-	-	01	-	-	-	-	-	-	-	-	-
SNOW HILL 4 N	SNOWFALL	-	-	-	-	-	-	-	-	-	10	-	-	-	-	-	-	-	-	-	-	-	03	-	-	-	-	-	-	-	-	-
	SN ON GND	-	-	-	-	-	-	-	-	-	-	-	-	-	-	-	-	-	-	-	-	-	-	-	-	-	-	-	-	-	-	-
CENTRAL EASTERN SHORE 02																																
ROYAL OAK 2 SSW	SNOWFALL	08	-	-	-	-	-	-	-	-	08	-	-	-	-	-	-	-	-	-	-	-	05	-	-	-	-	-	-	-	-	-
	SN ON GND	1	T	-	-	-	-	-	-	-	T	-	-	-	-	-	-	-	-	-	-	-	T	T	-	-	-	-	-	-	-	-
LOWER SOUTHERN 03																																
MECHANICSVILLE 5 NE	SNOWFALL	-	-	-	-	-	-	-	-	-	07	-	-	-	-	-	-	-	-	-	-	-	01	-	-	-	-	-	-	-	-	-
	SN ON GND	T	T	-	-	-	-	-	-	-	1	T	T	-	-	-	-	-	-	-	-	-	T	-	-	-	-	-	-	-	-	-
SOLOMONS	SNOWFALL	-	-	-	-	-	-	-	-	-	05	-	-	-	-	-	-	-	-	-	-	-	02	-	-	-	-	-	-	-	-	-
	SN ON GND	-	-	-	-	-	-	-	-	-	1	-	-	-	-	-	-	-	-	-	-	-	T	-	-	-	-	-	-	-	-	-
UPPER SOUTHERN 04																																
BALTIMORE WASH INTL AP R	SNOWFALL	-	-	-	-	-	-	-	-	-	T	-	-	-	-	-	-	-	-	-	-	T	07	18	-	-	-	-	-	-	-	-
	SN ON GND	3	3	T	-	-	-	-	-	-	T	-	-	-	-	-	-	-	-	-	-	-	3	2	-	-	-	-	-	-	-	-
	WTR EQUIV	-	-	-	-	-	-	-	-	-	-	-	-	-	-	-	-	-	-	-	-	-	-	-	-	-	-	-	-	-	-	-
BELTSVILLE R	SNOWFALL	T	-	-	-	-	-	-	-	-	-	-	-	-	-	-	-	-	-	-	-	-	10	-	-	-	-	-	-	-	-	-
	SN ON GND	2	1	1	T	-	-	-	-	-	-	-	-	-	-	-	-	-	-	-	-	-	1	-	-	-	-	-	-	-	-	-
DALECARLIA RSVR	SNOWFALL	-	-	-	-	-	-	-	-	-	-	-	-	-	-	-	-	-	-	-	-	-	-	-	-	-	-	-	-	-	-	-
	SN ON GND	-	-	-	-	1	-	-	-	-	-	-	-	-	-	-	-	-	-	-	-	-	-	-	-	-	-	-	-	-	-	-
	WTR EQUIV	-	-	-	-	-	-	-	-	-	-	-	-	-	-	-	-	-	-	-	-	-	-	-	-	-	-	-	-	-	-	-
NATL ARBORETUM DC	SNOWFALL	-	-	-	-	-	-	-	-	-	T	-	-	-	-	-	-	-	-	-	-	-	05	-	-	-	-	-	-	-	-	-
	SN ON GND	2	1	T	T	T	-	T	-	-	T	-	-	-	-	-	-	-	-	-	-	-	1	T	-	-	-	-	-	-	-	-
OXON HILL	SNOWFALL	T	-	-	-	-	-	-	-	-	05	-	-	-	-	-	-	-	-	-	-	-	05	-	-	-	-	-	-	-	-	-
	SN ON GND	5	4	2	1	1	T	-	-	-	T	-	-	-	-	-	-	-	-	-	-	-	T	-	-	-	-	-	-	-	-	-
UPPER MARLBORO 3 NNW	SNOWFALL	-	-	-	-	-	-	-	-	-	04	-	-	-	-	-	-	-	-	-	-	-	06	-	-	-	-	-	-	-	-	-
	SN ON GND	3	1	T	-	-	-	-	-	-	T	-	-	-	-	-	-	-	-	-	-	-	1	-	-	-	-	-	-	-	-	-
NORTHERN EASTERN SHORE 05																																
CHESTERTOWN	SNOWFALL	T	-	-	-	-	-	-	-	-	03	-	-	-	-	-	-	-	-	-	-	-	03	40	-	T	-	-	-	-	-	-
	SN ON GND	-	-	-	-	-	-	-	-	-	-	-	-	-	-	-	-	-	-	-	-	-	4	3	-	-	-	-	-	-	-	-
NORTHERN CENTRAL 06																																
ABERDEEN PHILLIPS FLD	SNOWFALL	-	-	-	-	-	-	-	-	-	T	-	-	-	-	-	-	-	-	-	-	-	45	-	-	-	-	-	-	-	-	-
	SN ON GND	4	4	2	2	1	T	-	-	-	T	-	-	-	-	-	-	-	-	-	-	-	4	3	2	-	-	-	-	-	-	-
BRIGHTON DAM	SNOWFALL	-	-	-	-	-	-	-	-	-	-	-	-	-	-	-	-	-	-	-	-	-	20	-	-	-	-	-	-	-	-	-
CONOWINGO DAM	SNOWFALL	40	-	-	-	-	-	-	-	-	-	-	-	-	-	-	-	-	-	-	-	-	40	-	-	-	-	-	-	-	-	-
	SN ON GND	4	3	3	3	3	3	3	2	2	1	1	1	1	1	1	-	-	-	-	-	-	4	3	1	-	-	-	-	-	-	-
CYLBURN	SNOWFALL	-	-	-	-	-	-	-	-	-	-	-	-	-	-	-	-	-	-	-	-	-	33	-	-	-	-	-	-	-	-	-
	SN ON GND	7	5	3	3	3	-	-	2	2	2	2	1	1	-	-	-	-	-	-	-	-	3	1	1	-	-	-	-	-	-	-

Snowfall: Includes snow and ice Values for NWS stations (J index note) are Mid-Mid (LST)

Snow on ground: Includes snow, sleet, ice, and hail Values for NWS stations (J index note) are observed at 12 UTC (GMT)

Water Equivalent: Given for NWS stations (J index note) only, when snow depth is 2 inches or more, and is measured at 18 UTC (GMT)

SNOWFALL AND SNOW ON GROUND (INCHES)

STATION		DAY OF MONTH																														
		01	02	03	04	05	06	07	08	09	10	11	12	13	14	15	16	17	18	19	20	21	22	23	24	25	26	27	28	29	30	31
DAMASCUS 3 SSW	SNOWFALL	T							T	T											T	04	30									
	SN ON GND	8	6	5	4	3	3	2	2	2	2	1	1	T	T	T	T	T	T	T	T	T	3	2	1							
EMMITSBURG 2 SE	SNOWFALL	-	-	-	-	-	-	-	-	-	-	-	-	-	-	-	-	-	-	-	-	-	45	-	-	-	-	-	-	-		
	SN ON GND	5	5	3	3	3	3	1	1	1	1	-	-	-	-	-	-	-	-	-	-	-	4	3	3	2						
FREDERICK 2 NNE	SNOWFALL	T																					43	-	-	-	-	-	-	-		
	SN ON GND	5	5	3	3	3	3	1	1	1	1	-	-	-	-	-	-	-	-	-	-	-	4	3	3	2						
MILLERS 4 NE R	SNOWFALL	T				T	T		T													10	58									
	SN ON GND	9	6	5	5	5	4	4	4	4	4	4	4	3	1	T	T					T	5	3	2							
SMITHSBURG 2NW	WTR EQUIV	160	200	150	130	150	150	150	140	140	140	130	130	120									040	050	050							
	SNOWFALL	-	-	-	-	-	-	-	-	-	-	-	-	-	-	-	-	-	-	-	-	-	50	-	-	-	-	-	-	-	-	
SN ON GND	SNOWFALL	-	-	-	-	-	-	-	-	-	-	-	-	-	-	-	-	-	-	-	-	-	5	-	-	-	-	-	-	-	-	
	SN ON GND	-	-	-	-	-	-	-	-	-	-	-	-	-	-	-	-	-	-	-	-	-	5	-	-	-	-	-	-	-	-	
APPALACHIAN MOUNTAIN 07																																
CUMBERLAND 2	SNOWFALL	T	-	-	-	-	-	-	-	T	-	-	-	-	-	-	-	-	-	-	-		40	T								
	SN ON GND	6	5	4	4	4	4	4	3	3	3	3	2	2									4	4	2	1						
FROSTBURG 2	SNOWFALL	02	-	T	-	-	03	-	05	03	-	-	-	T	-	02	-	-	-	-	-	T	41	T	-	-	T	-	-	-		
	SN ON GND	8	7	7	6	6	6	6	6	6	6	6	5	5	4	3	2	1	T				4	4	4	3	2	1				
SHARPSBURG 5 S	WTR EQUIV	140	-	-	160	-	-	-	150	-	-	160	-	-	-	-	-	-	-	-	-	-	110	-	-	-	-	-	-	-	-	
	SNOWFALL	T																					37									
WILLIAMSPORT	SN ON GND	5	4	3	2	2	2	1	1	1	T	T	T	T								4	3	2	T							
	SNOWFALL																						40									
SN ON GND	SNOWFALL																						4									
	SN ON GND																						400									
WTR EQUIV	SNOWFALL																															
	SN ON GND																															
ALLEGHENY PLATEAU 08																																
OAKLAND 1 SE	SNOWFALL			10					27	23	07		08	10		10							10	10			08					
	SN ON GND	14	10	9	9	7	6	6	8	9	9	9	9	10	6	5	4	3					1	2								
DELAWARE NORTHERN 01																																
BEAR 2 SW	SNOWFALL	T								03	T											T	21	26								
	SN ON GND	5	4	4	3	2	2	1	T	T	T	T											2	3	1							
WILMINGTON NEW CASTLE R	SNOWFALL									03	T											T	21	26								
	SN ON GND	6	5	4	4	3	2	2	T	T	T	T											5	3	1							
WILMINGTON PORTER RES	SNOWFALL	T	-							T													03	03								
	SN ON GND	8	-	4	4	3	2	2	-	2													2	-	2	2						
SOUTHERN 02																																
DOVER	SNOWFALL											01																				
	SN ON GND																															

Snowfall: Includes snow and ice Values for NWS stations (J index note) are Mid-Mid (LST)

Snow on ground: Includes snow, sleet, ice, and hail Values for NWS stations (J index note) are observed at 12 UTC (GMT)

Water Equivalent: Given for NWS stations (J index note) only, when snow depth is 2 inches or more, and is measured at 18 UTC (GMT)

PAN EVAPORATION AND WIND

STATION		DAY OF MONTH																															TOTAL OR AVERAGE			
		01	02	03	04	05	06	07	08	09	10	11	12	13	14	15	16	17	18	19	20	21	22	23	24	25	26	27	28	29	30	31				
MARYLAND UPPER SOUTHERN 04 BELTSVILLE	WIND	-	-	-	-	-	-	-	-	-	-	-	-	-	-	-	-	-	-	-	-	-	-	-	-	-	-	-	-	-	-	-	-	-	M	
	EVAP	-	-	-	-	-	-	-	-	-	-	-	-	-	-	-	-	-	-	-	-	-	-	-	-	-	-	-	-	-	-	-	-	-	M	
	MAX	-	-	-	-	-	-	-	-	-	-	-	-	-	-	-	-	-	-	-	-	-	-	-	-	-	-	-	-	-	-	-	-	-	M	
	MIN	-	-	-	-	-	-	-	-	-	-	-	-	-	-	-	-	-	-	-	-	-	-	-	-	-	-	-	-	-	-	-	-	-	-	M
UPPER MARLBORO 3 NNW	WIND	-	-	-	-	-	-	-	-	-	-	-	-	-	-	-	-	-	-	-	-	-	-	-	-	-	-	-	-	-	-	-	-	-	M	
	EVAP	-	-	-	-	-	-	-	-	-	-	-	-	-	-	-	-	-	-	-	-	-	-	-	-	-	-	-	-	-	-	-	-	-	M	
	MAX	38	38	50	51	49	39	57	56	50	49	52	54	53	52	64	53	55	65	69	58	53	44	47	56	49	62	52	59					52.5		
MIN	32	32	33	33	33	35	35	38	33	33	34	34	36	38	37	36	35	41	40	35	34	34	34	34	36	37	37	38						35.3		
ALLEGHENY PLATEAU 08 SAVAGE RIVER DAM	WIND	-	-	-	-	-	-	-	-	-	-	-	-	-	-	-	-	-	-	-	-	-	-	-	-	-	-	-	-	-	-	-	-	-	M	
	EVAP	-	-	-	-	-	-	-	-	-	-	-	-	-	-	-	-	-	-	-	-	-	-	-	-	-	-	-	-	-	-	-	-	-	-	M
	MAX	-	-	-	-	-	-	-	-	-	-	-	-	-	-	-	-	-	-	-	-	-	-	-	-	-	-	-	-	-	-	-	-	-	-	-
	MIN	-	-	-	-	-	-	-	-	-	-	-	-	-	-	-	-	-	-	-	-	-	-	-	-	-	-	-	-	-	-	-	-	-	-	-

Evaporation: Is measured in hundredths of inches.

Wind: Is measured in miles.

Max and Min: The maximum and minimum temperatures (Fahrenheit) of the water in the evaporation pan.

STATION INDEX

STATION	INDEX NO.	DIVISION	COUNTY	LATITUDE	LONGITUDE	ELEVATION (IN FEET)	OBSERVATION TIME AND TABLES			
							LOCAL STD TIME			
							TEMP	PRECIP	EVAP	SPECIAL SEE (NOTES)
MARYLAND										
ABERDEEN PHILLIPS FLD R	0015	06	HARFORD	39 28	76 10W	57	07	07		CH
ASSATEAGUE	0335	01	WORCESTER	38 4	75 13W	10	24	24		H
BALTIMORE WASH INTL AP R	0465	04	ANNE ARUNDEL	39 10	76 41W	156	24	24		CHJ
BELTSVILLE R	0700	04	PRINCE GEORGE'S	39 2	76 56W	145	08	08	EV	CH
BRIGHTON DAM	1125	06	MONTGOMERY	39 11	77 0W	330		07		H
CATOCTIN MTN PARK	1530	06	FREDERICK	39 39	77 29W	1610	17	17		H
CHESTERTOWN	1750	05	KENT	39 13	76 3W	40	23	23		H
CONOWINGO DAM	2060	06	HARFORD	39 39	76 11W	40	07	07		H
CUMBERLAND 2	2282	07	ALLEGANY	39 39	78 45W	730	18	18		H
CYLBURN	2308	06	BALTIMORE	39 22	76 38W	400	08	08		H
DALECARLIA RSVR	2325	04	PRINCE GEORGE'S	38 56	77 7W	150	08	08		H
DAMASCUS 3 SSW	2336	06	MONTGOMERY	39 16	77 14W	697	22	22		H
EMMITSBURG 2 SE	2906	06	FREDERICK	39 41	77 17W	403	07	07		H
FREDERICK 2 NNE	3353	06	FREDERICK	39 26	77 24W	280	07	07		H
FROSTBURG 2	3415	07	ALLEGANY	39 40	78 56W	2170	07	07		H
LAUREL 3 W	5111	04	PRINCE GEORGE'S	39 5	76 54W	400	24	07		H
MD SCI CTR BALTIMORE R	5718	04	BALTIMORE (CITY)	39 17	76 37W	20	24	24		CH
MECHANICSVILLE 5 NE	5865	03	ST MARY'S	38 28	76 42W	100	07	07		H
MILLERS 4 NE R	5934	06	CARROLL	39 43	76 48W	860	18	18		CH
NATL ARBORETUM DC	6350	04	DISTRICT OF COLUMBIA	38 55	76 58W	50	07	07		H
OAKLAND 1 SE	6620	08	GARRETT	39 25	79 24W	2420	07	07		H
OXON HILL	6800	04	PRINCE GEORGE'S	38 48	76 60W	120	08	08		H
POTOMAC FLTR PLT	7272	06	MONTGOMERY	39 2	77 15W	270		08		H
PRINCESS ANNE	7330	01	SOMERSET	38 13	75 41W	20	17	17		H
ROYAL OAK 2 SSW	7806	02	TALBOT	38 43	76 11W	10	17	17		H
SALISBURY 2N	8004	01	WICOMICO	38 24	75 36W	20	17	17		H
SALISBURY FAA AP	8005	01	WICOMICO	38 20	75 31W	48	24	24		H
SAVAGE RIVER DAM R	8065	08	GARRETT	39 31	79 8W	1495	08	08	EV	CH
SHARPSBURG 5 S	8207	07	WASHINGTON	39 24	77 43W	500	07	07		H
SMITHSBURG 2NW	8371	06	WASHINGTON	39 40	77 35W	670	08	08		H
SNOW HILL 4 N	8380	01	WORCESTER	38 14	75 23W	30	17	17		H
SOLOMONS	8405	03	CALVERT	38 19	76 27W	12	08	08		H
UPPER MARLBORO 3 NNW	9070	04	PRINCE GEORGE'S	38 52	76 47W	100	08	08	EV	H
WESTMINSTER	9440	06	CARROLL	39 34	76 59W	765	07	07		H
WILLIAMSPORT	9570	07	WASHINGTON	39 36	77 50W	360	06	06		H
DELAWARE										
BEAR 2 SW	1200	01	NEW CASTLE	39 36	75 44W	80	24	24		H
DOVER	2730	02	KENT	39 15	75 31W	30	16	16		H
LEWES	5320	02	SUSSEX	38 47	75 8W	15	17	17		H
WILMINGTON NEW CASTLE R	9595	01	NEW CASTLE	39 40	75 36W	79	24	24		CHJ
WILMINGTON PORTER RES	9605	01	NEW CASTLE	39 46	75 32W	270	24	24		H

REFERENCE NOTES

STATION NAMES: Name of the city, town or locality. Figures and letters following the station names indicate the distance in miles and direction from the post office or town community center.

DIVISIONS: Areas within a state of similar climatological characteristics. Division averages are calculated using data from stations that record both temperature and precipitation (i.e. not precipitation alone).

NORMALS: The average value of the meteorological element over a time period. Effective 1 January 2002, the averaging period is 1971 to 2000. The normals for National Weather Service localities have been adjusted so as to be representative for the current observation site.

MONTHLY DEGREE DAY TOTALS: One heating (cooling) degree day is accumulated for each whole degree that the daily mean temperature is below (above) 65 degrees Fahrenheit.

PRECIPITATION: Values shown in hundredths of inches are water equivalent totals, i.e., total of liquid and melted frozen precipitation. In the "Monthly Summarized Data" table the total snow and sleet values shown in tenths of inches are unmelted amounts. The max depth on ground values of snow and sleet shown in whole inches are cumulative unmelted amounts. The number of days with .10, .50, 1.00 or more refers to water equivalents.

PRECIPITATION QUALITY CONTROL: The NCDC quality control process may flag precipitation data that are spatially inconsistent, exceed climatological limits, or are inconsistent with prevailing weather patterns.

TEMPERATURE: Original temperature values are given in the "Daily Temperature" table. Summary temperature information (averages, departures, extremes, monthly degree day totals) is based on the values labeled MAX/MIN.

WIND: (As shown in the "Evaporation and Wind" table) the total wind movement in miles over the evaporation pan as determined by an anemometer recorder located 6-8 inches above the pan.

SYMBOLS AND LETTERS USED IN THE STATION INDEX TABLE

- C Station is equipped with recording rain gage (R) but values in this bulletin are from a non-recording rain gage unless indicated by an R.
- G Observations appear in the "Soil Temperatures" table.
- H Observations appear in the "Snowfall and Snow on the Ground" table.
- J Station also published as a Local Climatological Data publication.
- VAR Observation time varies.
- SR Observation time near sunrise.
- SS Observation time near sunset.

SYMBOLS AND LETTERS USED IN THE DATA TABLES

(DAILY DATA ARE FOR THE 24 HOURS IMMEDIATELY PRECEDING OBSERVATION TIME.)

BLANK Entries in the "Monthly Summarized Data" table indicate no record.

BLANK Entries in the "Daily Precipitation" and "Snowfall and Snow on the Ground" tables indicate zero.

BLANK Entries in the "Daily Temperature" table indicate a missing record

- No record. Data not recorded or not received in time for publication.

+ Precipitation or temperature extremes occurred on one or more previous dates during the month.

* Rain gage not read. Precipitation is included in the amount following the asterisks. Time distribution may not be known. A * preceding the monthly total indicates precipitation amount is being carried forward to next month's total, and may include amounts from the previous month(s).
a As a subscript, indicates accumulated total.

A Amount of precipitation is the total of observer's entries for the current month. It may include precipitation that occurred during the previous month. Refer to earlier bulletin to determine date of last reading. (Hawaii stations)

F Monthly calculation flagged value. F is appended to average and/or total values computed which exclude one or more daily data values that have been flagged by the GHCN-Daily Dataset

M Insufficient or partial data. M is appended to average and/or total values computed with 1-9 daily values missing. M appears alone if 10 or more daily values are missing, (8 or more for wind and evaporation).

N Indicates snow fall or Snowdepth totals are computed with one or more missing days.

R Amounts from recording rain gage.

T Trace. An amount too small to measure.

SEASONAL TABLES: Monthly and seasonal snowfall and heating degree days for the 12 months ending with the June data are published in the July issue of this bulletin. Cooling degree days for the calendar year are published in the "Climatological Data Annual Summary."

Information concerning the history of changes in locations, exposure, etc. of substations is kept on file at the National Climatic Data Center. Historical information of regular National Weather Service Offices may be obtained from the "Local Climatological Data" annual publication. The contents of this publication may be reprinted or otherwise used freely, with proper credit to the National Climatic Data Center. The data are also available digitally.

Effective with the January 2011 Data-Month, COOP Observer Names are no longer included in the Monthly and Annual Climatological Data Publications. This information is not published to ensure the privacy of personal information pursuant to Section 208 of the E-Government Act of 2002 (44 USC 3601).

The GHCN-Daily Quality Control Flags shown below are displayed as superscripts with the data. For more Information on Global Historical Climatology Network - Daily and flags, see:
<http://www.ncdc.noaa.gov/oa/climate/ghcn-daily/>
and

Comprehensive Automated Quality Assurance of Daily Surface Observations.
Durre, Imke, Matthew J. Menne, Byron E. Gleason, Tamara G. Houston, Russell S. Vose, 2010: J. Appl. Meteor. Climatol., 49, 16151633.
doi: 10.1175/2010JAMC2375.1

Blank = Passed All checks

D = failed duplicate check

G = failed gap check

I = failed internal consistency check

K = failed streak/frequent-value check

L = failed check on length of multiday period

M = failed megaconsistency check

N = failed naught check

O = failed climatological outlier check

R = failed lagged range check

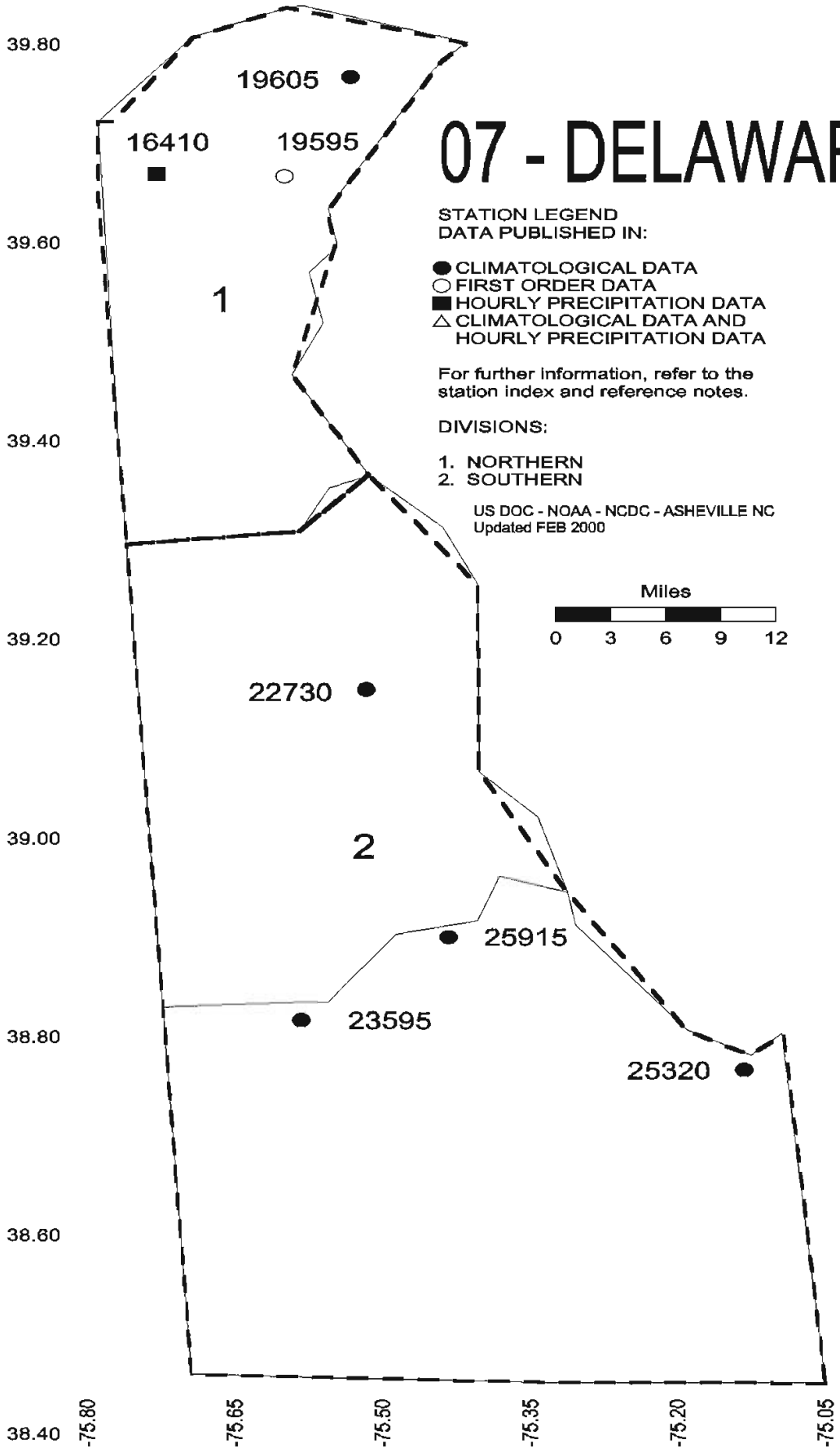
S = failed spatial consistency check

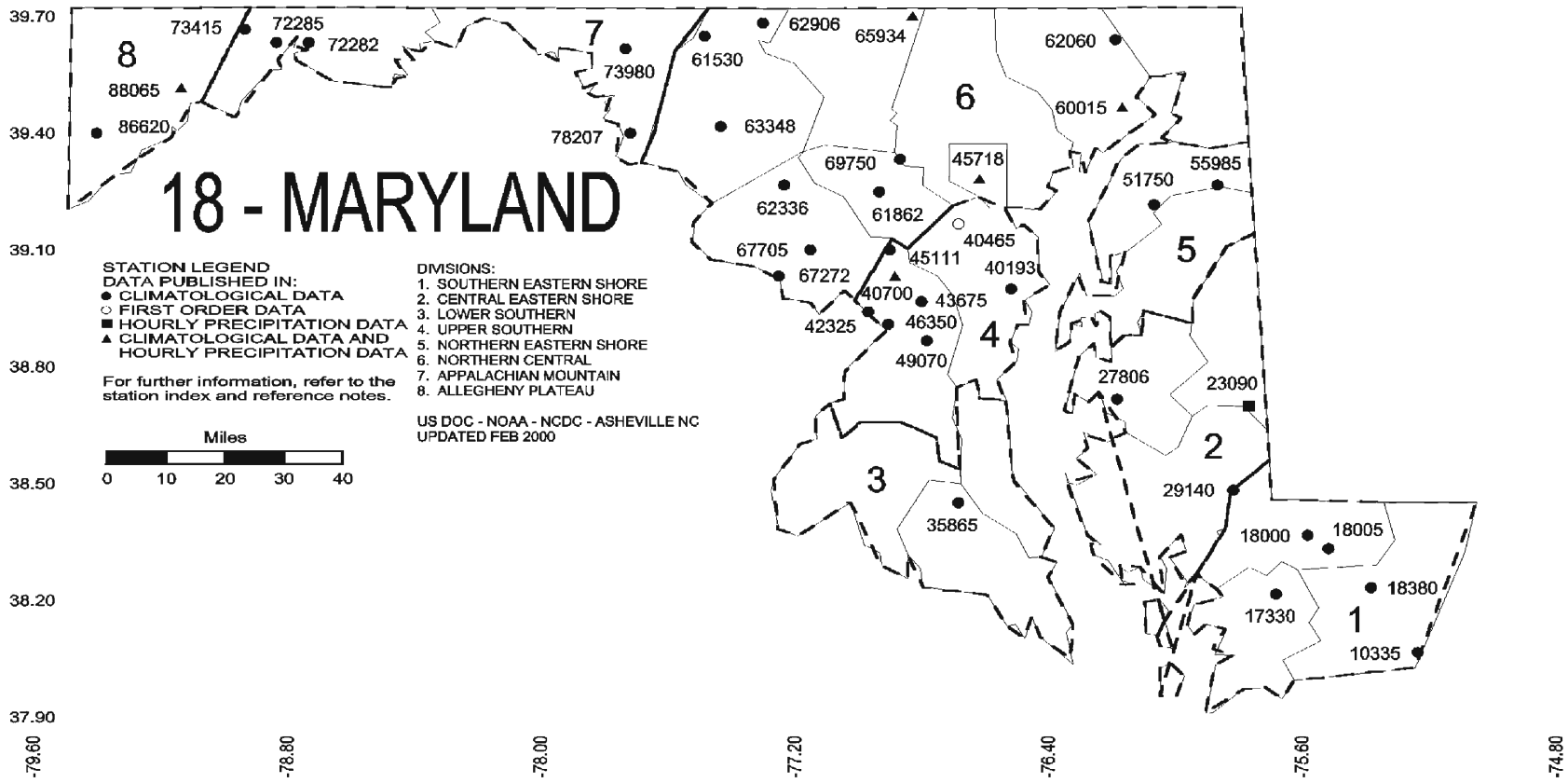
T = failed temporal consistency check

W = temperature too warm for snow

X = failed bounds check

07 - DELAWARE





NOAA\National Climatic Data Center
Attn: User Engagement & Services Branch
151 Patton Avenue
Asheville, NC 28801-5001

PRSRT STD
POSTAGE & FEES PAID
United States Department of Commerce
NOAA Permit No. G-19

OFFICIAL BUSINESS
PENALTY FOR PRIVATE USE \$300
ADDRESS CORRECTION REQUESTED

To change your address, please return a copy of the mailing label along with your new address to:

NOAA\National Climatic Data Center
Attn: User Engagement & Services Branch
151 Patton Avenue
Asheville, NC 28801-5001

Customer Services Number: (828) 271-4800, option 2
TDD : (828) 271-4010
Fax number: (828) 271-4876

NCDC now offers an annual online subscription for the *Climatological Data* publication. When you purchase this subscription service, you will have **immediate online access** to all previous Climatological Data publications. Your subscription is valid for one year after purchase.

The total cost is \$42 for online delivery (including back issues).

To order this and other subscriptions online with your credit card, go to:

<http://www.ncdc.noaa.gov/oa/mpp/> and choose subscription.