



# CLIMATOLOGICAL DATA MARYLAND AND DELAWARE



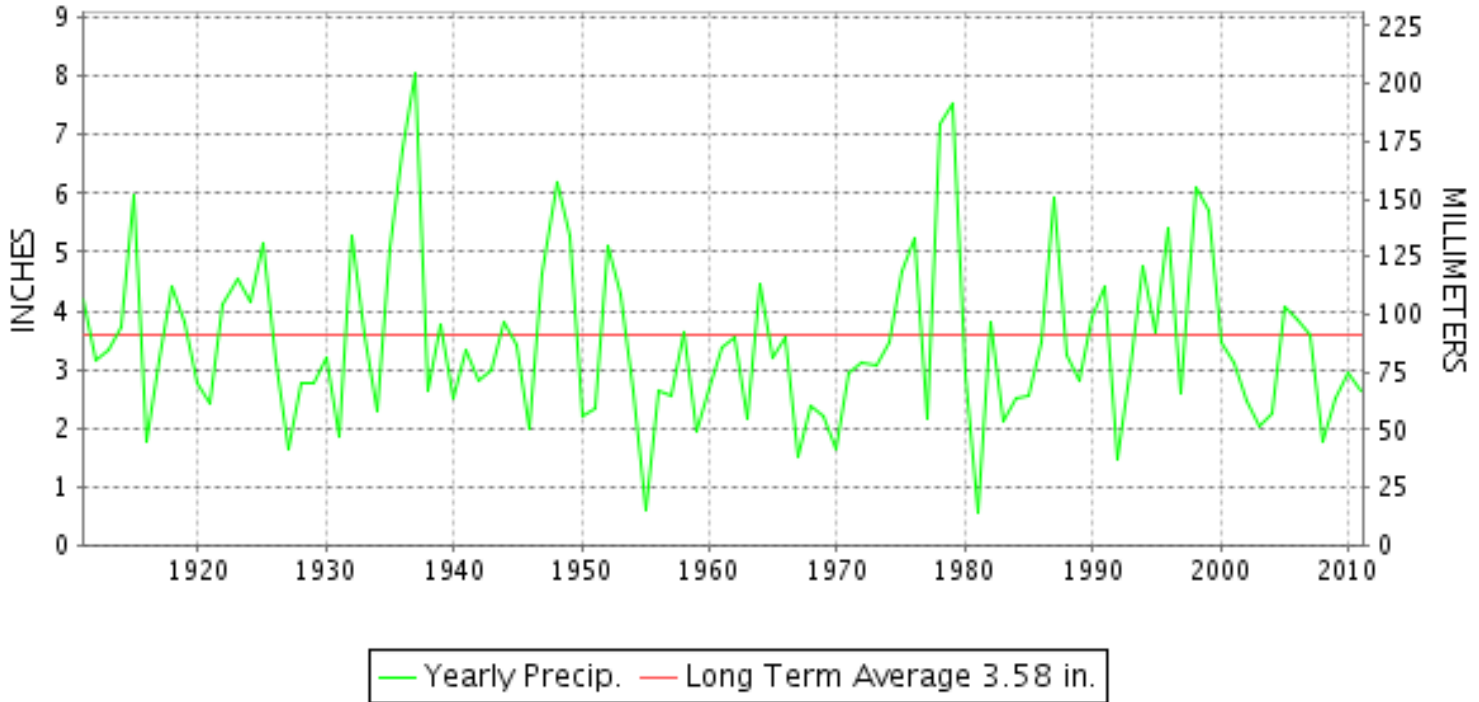
JANUARY 2011

VOLUME 115 NUMBER 01

ISSN 0145-0549

GHCND Ver: 2.91-upd-2012021008

## JANUARY PRECIPITATION BY YEAR



### TEMPERATURE AND PRECIPITATION EXTREMES

#### MARYLAND

HIGHEST TEMPERATURE	61	JANUARY 02	MD SCI CTR BALTIMORE
LOWEST TEMPERATURE	-9	JANUARY 25	OAKLAND 1 SE
GREATEST TOTAL PRECIPITATION	3.27		2 STATIONS
LEAST TOTAL PRECIPITATION	1.22		CUMBERLAND 2
GREATEST 1 DAY PRECIPITATION	1.82	JANUARY 26	BALTIMORE WASH INTL AP
GREATEST TOTAL SNOWFALL	58.8		OAKLAND 1 SE
GREATEST DEPTH OF SNOW OR ICE	23		OAKLAND 1 SE

"I certify that this is an official publication of the National Oceanic and Atmospheric Administration (NOAA) It is compiled using information from weather observing sites supervised by NOAA/National Weather Service and received at the National Climatic Data Center(NCDC), Asheville, North Carolina 28801."

Director  
National Climatic Data Center

noaa

National  
Oceanic and  
Atmospheric Administration

National  
Environmental Satellite, Data  
and Information Service

National  
Climatic Data Center  
Asheville, North Carolina

**DELAWARE**

HIGHEST TEMPERATURE	58	JANUARY 02++	2 STATIONS
LOWEST TEMPERATURE	7	JANUARY 24	WILMINGTON PORTER RES
GREATEST TOTAL PRECIPITATION	3.22		WILMINGTON NEW CASTLE
LEAST TOTAL PRECIPITATION	2.72		WILMINGTON PORTER RES
GREATEST 1 DAY PRECIPITATION	1.65	JANUARY 26	BEAR 2 SW
GREATEST TOTAL SNOWFALL	27.6		WILMINGTON PORTER RES
GREATEST DEPTH OF SNOW OR ICE	9		BEAR 2 SW

# MONTHLY STATION AND DIVISION SUMMARY

STATION	TEMPERATURE (°F)													PRECIPITATION (IN)										
	AVERAGE MAXIMUM	AVERAGE MINIMUM	AVERAGE	DEPARTURE FROM NORMAL	HIGHEST	DATE	LOWEST	DATE	HEATING DEG. DAYS	COOLING DEG. DAYS	NO. OF DAYS				TOTAL	DEPARTURE FROM NORMAL	GREATEST 24 HOURS	DATE	ICE PELLETS, SNOW			NO OF DAYS		
											MAX		MIN						TOTAL	MAX DEPTH ON GROUND	DATE	10 OR MORE	50 OR MORE	100 OR MORE
											>=90	<=32	<=32	<=0										
<b>MARYLAND SOUTHERN EASTERN SHORE 01</b>																								
ASSATEAGUE	M	M	M											M				0.0	0					
PRINCESS ANNE	M	M	M											M			N 0.5	0						
SALISBURY 2N	M	M	M											M			0.0	0						
SALISBURY FAA AP	39.6	23.7	31.7	-4.0	58	01	8	24	1027	0	0	3	28	0	3.01	-1.08	1.27	26	0.0	0		6	2	1
SNOW HILL 4 N	42.8	24.3F	33.6F	-3.4	59	01	7	24	963	0	0	2	27	0	3.14	-0.88	1.34	18	N 0.5	N 4	08	6	3	1
--DIVISIONAL DATA----->			32.7	-3.3										3.08	-0.92									
<b>CENTRAL EASTERN SHORE 02</b>																								
ROYAL OAK 2 SSW	39.4	25.5	32.5	-3.6	56	01	11	24+	1001	0	0	3	28	0	2.29	-1.82	0.90	26	N 4.0	N 3	27	4	1	0
--DIVISIONAL DATA----->			32.5	-2.3										2.29	-1.69									
<b>LOWER SOUTHERN 03</b>																								
MECHANICSVILLE 5 NE	38.5	22.9	30.7	-4.2	58	02	7	25+	1059	0	0	5	31	0	3.27	-0.72	1.02	27	2.7	N 2	31	6	2	1
SOLOMONS	38.9	27.9	33.4		59	02	17	24+	973	0	0	4	28	0	FM 1.99		0.70	27	0.4	N T	28	5	1	0
--DIVISIONAL DATA----->			32.1	-1.9										2.63	-1.09									
<b>UPPER SOUTHERN 04</b>																								
BALTIMORE WASH INTL AP	37.8	22.7	30.3	-2.0	60	02	8	24	1070	0	0	6	30	0	2.66	-0.81	1.82	26	10.7	5	31	4	1	1
BELTSVILLE	37.7	22.7	30.2	-2.4	58	02	10	24	1070	0	0	6	31	0	2.12	-1.31	1.09	27	7.6	5	29	4	1	1
DALECARLIA RSVR	37.7	23.6	30.7	-3.3	57	02	11	24	1057	0	0	7	30	0	1.44	-2.04	0.62	27	6.9	5	27	5	1	0
LAUREL 3 W	36.5	24.3	30.4	-2.7	57	02	11	24	1066	0	0	8	29	0	M				N 7.0	0				
MD SCI CTR BALTIMORE	38.4	27.8	33.1		61	02	16	24+	981	0	0	4	25	0	2.06		1.26	26	0.0	0		4	1	1
NATL ARBORETUM DC	39.5M	23.2M	31.4M		53	20	10	24	937	0	0	3	27	0	M 2.91		1.55	27	FN 5.1	FN 3	28	5	1	1
OXON HILL	38.8	25.0	31.9		58	02	11	25+	1020	0	0	5	29	0	2.72		1.66	27	10.6	7	27	5	1	1
UPPER MARLBORO 3 NNW	38.8	22.4	30.6	-1.9	59	02	7	25+	1058	0	0	5	31	0	2.04	-1.45	1.01	27	N 5.3	N 4	30	5	1	1
--DIVISIONAL DATA----->			31.1	-2.2										2.28	-1.27									
<b>NORTHERN EASTERN SHORE 05</b>																								
CHESTERTOWN	36.0F	23.6F	29.8F	-3.4	56	02+	12	24	1085	0	0	9	28	0	2.81	-0.75	1.42	26	11.0	5	26	8	1	1
--DIVISIONAL DATA----->			29.8	-2.9										2.81	-0.84									
<b>NORTHERN CENTRAL 06</b>																								
ABERDEEN PHILLIPS FLD	36.3	22.2	29.3	-4.3	54	02	9	24+	1100	0	0	6	31	0	FM 2.70		1.34	27	16.9	7	29	5	2	1
BRIGHTON DAM	M	M	M											M 2.19		0.85	27	N 11.0	8	27	5	2	0	
CATOCTIN MTN PARK	34.3M	20.7M	27.5M		50	01	10	22	820	0	0	10	22	0	M				N 3.5	2	18			
CONOWINGO DAM	36.8	19.7	28.3	-2.6	51	02	5	24	1133	0	0	6	31	0	2.08	-1.90	0.91	08	14.1	7	27	6	1	0
CYLBURN	34.6	21.5	28.1		57	02	7	25+	1137	0	0	14	31	0	M				N 14.0	N 10	28			
DAMASCUS 3 SSW	34.3M	20.8M	27.6M		55	03+	6	25+	1114	0	0	14	29	0	M 2.46		1.39	27	N 18.5	N 11	27	4	1	1

MONTHLY STATION AND DIVISION SUMMARY

STATION	TEMPERATURE (°F)											PRECIPITATION (IN)												
	AVERAGE MAXIMUM	AVERAGE MINIMUM	AVERAGE	DEPARTURE FROM NORMAL	HIGHEST	DATE	LOWEST	DATE	HEATING DEG. DAYS	COOLING DEG. DAYS	NO. OF DAYS				TOTAL	DEPARTURE FROM NORMAL	GREATEST 24 HOURS	DATE	ICE PELLETS, SNOW			NO OF DAYS		
											MAX		MIN						TOTAL	MAX DEPTH ON GROUND	DATE	10 OR MORE	50 OR MORE	1 00 OR MORE
											>=90	<=32	<=32	<=0										
EMMITSBURG 2 SE	34.6	19.9	27.3	-3.7	53	02	4	25+	1167	0	0	13	31	0	2.73	-0.93	1.25	18	17.0	9	29	3	3	1
FREDERICK 2 NNE	36.3	21.4	28.9		54	02	8	25+	1114	0	0	11	31	0	M 1.64		0.71	27	N 17.7	N 6	31	5	1	0
MILLERS 4 NE	34.3	20.4	27.4	-3.0	54	02	1	24	1162	0	0	16	30	0	2.77	-0.87	0.86	27	22.9	12	28	6	3	0
POTOMAC FLTR PLT	M	M	M												M 0.23		0.23	12	N 1.4	1	11	1	0	0
SMITHSBURG 2NW	33.1	17.1F	25.1F		56	02	2	24	1229	0	0	21	29	0	1.47		0.85	27	N 11.5	8	27	5	1	0
WESTMINSTER	35.1	20.5	27.8	-3.7	55	02	5	25+	1146	0	0	13	30	0	1.84	-1.31	0.78	27	16.4	8	27	4	2	0
--DIVISIONAL DATA-----> APPALACHIAN MOUNTAIN 07			27.7	-3.5											2.01	-1.59								
CUMBERLAND 2	36.1	22.2F	29.2F	-1.1	49	04	5	24	1101	0	0	9	28	0	1.22	-1.67	0.64	27	N 13.9	N 10	27	4	1	0
FROSTBURG 2	28.9	14.9	21.9	-2.6	52	01	-1	24+	1331	0	0	21	29	3	1.44	-2.13	0.64	27	N 23.6	9	30	4	1	0
SHARPSBURG 5 S	36.0	18.2	27.1		57	02	4	25+	1167	0	0	13	31	0	1.87		1.14	27	14.4	9	27	3	1	1
WILLIAMSPORT	35.6	16.4	26.0		50	01	2	25+	1205	0	0	11	31	0	1.33		0.84	27	11.7	2	18	3	1	0
--DIVISIONAL DATA-----> ALLEGHENY PLATEAU 08			26.1	-2.9											1.47	-1.63								
OAKLAND 1 SE	29.8	14.5	22.2	-4.6	56	01	-9	25	1321	0	0	20	30	1	3.27	-0.24	0.80	27	58.8	23	29	11	2	0
SAVAGE RIVER DAM	30.4	16.8	23.6	-2.6	44	01	-2	25+	1275	0	0	21	30	2	1.28	-1.61	0.75	27	N 10.0	12	27	3	1	0
--DIVISIONAL DATA----->  DELAWARE NORTHERN 01															2.28	-1.27								
BEAR 2 SW	36.2	21.0	28.6		58	02+	9	24	1121	0	0	8	29	0	3.05		1.65	26	18.0	9	26	6	1	1
WILMINGTON NEW CASTLE	35.3	21.6	28.5	-3.0	58	02	8	24	1132	0	0	11	30	0	3.22	-0.21	1.57	26	18.0	8	27	7	2	1
WILMINGTON PORTER RES	33.3	22.2	27.8		55	02	7	24	1149	0	0	17	31	0	2.72		0.85	26	27.6	N 8	31	9	1	0
--DIVISIONAL DATA-----> SOUTHERN 02			28.3	-3.4											3.00	-0.70								
DOVER	38.7	23.5	31.1	-4.2	57	02	10	24+	1044	0	0	6	28	0	3.10	-0.84	1.35	18	N 9.8	3	13	5	2	2
LEWES	M	M	M												M		0.0		0.0	0				
--DIVISIONAL DATA----->			31.1	-3.5											3.10	-0.89								

DAILY PRECIPITATION (INCHES)

STATION	TOTAL	DAY OF MONTH																															
		01	02	03	04	05	06	07	08	09	10	11	12	13	14	15	16	17	18	19	20	21	22	23	24	25	26	27	28	29	30	31	
<b>MARYLAND</b>																																	
<b>SOUTHERN</b>																																	
<b>EASTERN SHORE 01</b>																																	
ASSATEAGUE	M	-	-	-	-	-	-	-	-	-	-	-	-	-	-	-	-	-	-	-	-	-	-	-	-	-	-	-	-	-	-	-	-
PRINCESS ANNE	M	-	-	-	-	-	-	-	-	-	0.07	-	-	-	-	-	-	1.10 <sup>L</sup>	0.04	-	-	-	-	-	-	-	-	1.27	0.05	T	-	-	-
SALISBURY 2N	M	-	-	-	-	-	-	-	-	-	-	-	-	-	-	-	-	-	-	-	-	-	-	-	-	-	-	-	-	-	-	-	
SALISBURY FAA AP	3.01	0.11	0.22	-	-	-	T	0.04	-	-	0.15	T	-	-	-	-	0.33	0.67	0.03	-	0.09	-	-	-	-	-	1.27	0.01	0.07	-	-	0.02	
SNOW HILL 4 N	3.14	-	0.27	-	-	-	-	0.01	-	-	0.01	0.12	-	-	-	-	-	1.34	0.01	-	0.07	-	-	-	-	-	0.64	0.56	0.11	-	-	-	
<b>CENTRAL</b>																																	
<b>EASTERN SHORE 02</b>																																	
FEDERALSBURG R	M	-	-	-	-	-	-	-	-	-	-	-	-	-	-	-	-	-	-	-	-	-	-	-	-	-	-	-	-	-	-	-	
ROYAL OAK 2 SSW	2.29	-	0.25	0.03	-	-	0.02	0.05	-	-	T	0.07	-	-	-	-	-	0.43	T	-	T	-	-	-	-	-	0.90	0.46	0.08	-	-	T	
<b>LOWER SOUTHERN 03</b>																																	
MECHANICSVILLE 5 NE	3.27	-	0.14	0.21	-	-	T	T	0.01	-	-	0.09	-	-	-	-	0.42	T	-	T	-	-	-	-	-	0.48	1.02	-	0.90	-	T		
SOLOMONS	FM 1.99	-	0.25	0.22	-	-	-	-	-	T <sup>L</sup>	-	0.06	-	-	-	-	0.37	0.03	-	-	-	-	-	-	-	0.29	0.70	-	0.06	-	0.01		
<b>UPPER SOUTHERN 04</b>																																	
BALTIMORE WASH INTL AP R	2.66	T	0.05	-	-	-	T	0.01	-	-	0.16	-	-	-	-	0.18	0.27	0.05	T	0.06	-	-	-	-	-	1.82	T	0.06	T	-	T		
BELTSVILLE R	2.12	-	0.02	0.05	-	-	T	0.01	-	-	-	0.14	-	-	-	-	0.47	-	-	0.03	-	-	-	-	-	0.26	1.09	-	0.05	-	-		
DALECARLIA RSVR	1.44	-	0.03	-	-	-	-	0.01	-	-	-	0.10	-	-	-	-	0.46	0.02	-	-	-	-	-	-	-	0.10	0.62	-	0.10	-	-		
LAUREL 3 W	M	-	0.09	-	-	-	-	-	-	-	0.16	-	-	-	-	-	0.02	0.25	0.02	-	-	-	-	-	-	1.01	-	0.02	-	-	-		
MD SCI CTR BALTIMORE R	2.06	-	0.02	-	-	-	0.01	-	-	-	0.14	-	-	-	-	0.13	0.29	0.07	-	0.09	-	-	-	-	-	1.26	-	0.05	-	-	-		
NATL ARBORETUM DC	M 2.91	-	T	0.40	-	-	-	T	-	-	-	0.14	-	-	-	-	0.42	0.01	-	T	-	-	-	-	-	0.32	1.55	-	0.07	-	-		
OXON HILL	2.72	-	0.02	0.13	-	-	-	T	0.04	-	-	0.10	-	-	-	-	0.43	0.02	-	0.03	-	-	-	-	-	0.22	1.66	-	0.07	-	-		
UPPER MARLBORO 3 NNW	2.04	-	0.02	0.12	-	-	-	T	T	-	-	0.12	-	-	-	-	0.34	-	-	0.02	-	-	-	-	-	0.36	1.01	-	0.05	-	-		
<b>NORTHERN</b>																																	
<b>EASTERN SHORE 05</b>																																	
CHESTERTOWN	2.81	T	0.18	-	-	-	0.11	0.10	-	-	0.18	0.08	-	-	-	0.12	0.40	0.07	-	T	-	-	-	-	-	1.42	0.12	0.03	-	-	T		
<b>NORTHERN CENTRAL 06</b>																																	
ABERDEEN PHILLIPS FLD	FM 2.70	-	-	0.06 <sup>L</sup>	-	-	0.03	0.01	-	-	-	0.30	-	-	-	-	0.57	0.08	-	0.12	-	-	-	-	-	0.19	1.34	-	0.06	-	-		
BRIGHTON DAM	M 2.19	-	0.04	-	-	-	-	-	-	-	0.20	-	-	-	-	-	0.45	-	0.05	0.10	-	-	-	-	-	0.50	0.85	-	-	-	-		
CATOCTIN MTN PARK	M	0.01	0.04	-	-	0.08	0.07	0.04	-	-	0.28 <sup>L</sup>	0.00 <sup>L</sup>	0.00 <sup>L</sup>	0.00 <sup>L</sup>	-	0.21	0.28	-	-	-	-	-	-	-	-	-	-	-	-	-	-	-	
CONOWINGO DAM	2.08	-	0.05	-	-	-	-	0.91	-	-	0.10	-	-	-	-	-	0.22	0.30	-	0.15	-	-	-	-	-	0.03	0.32	-	-	-	-		
CYLBURN	M	-	-	T	-	-	0.01	0.01	-	-	0.20	-	-	-	-	-	-	-	-	-	0.61 <sup>L</sup>	-	-	-	0.31	-	1.50 <sup>L</sup>	-	-	-	-		
DAMASCUS 3 SSW	M 2.46	-	0.03	0.01	-	-	T	0.05	0.02	-	0.20	T	-	-	-	0.47	-	-	0.04	T	-	-	-	T	0.19	1.39	T	0.06	T	-	-		
EMMITSBURG 2 SE	2.73	-	T	0.01	-	-	0.01	0.02	-	-	0.60	-	-	-	-	1.25	0.02	-	0.01	-	-	-	-	-	0.05	0.75	-	0.01	-	-	-		
FREDERICK 2 NNE	M 1.64	-	-	0.01	-	-	-	0.03	-	-	-	0.25	-	-	-	0.29	0.10	-	T	T	T	-	-	-	0.17	0.71	-	0.08	-	-	-		
MILLERS 4 NE R	2.77	T	0.03	-	-	-	0.02	0.06	-	-	0.06	0.23	T	-	-	0.56	0.10	-	0.15	-	-	-	-	-	0.61	0.86	0.08	0.01	-	-	-		
POTOMAC FLTR PLT	M 0.23	-	-	-	-	-	-	-	-	-	-	0.23	-	-	-	-	-	-	-	-	-	-	-	-	-	-	-	-	-	-	-		
SMITHSBURG 2NW	1.47	-	0.05	-	-	-	0.05	0.10	-	-	0.22	-	-	-	-	0.10	-	-	-	-	-	-	-	-	-	0.10	0.85	-	-	-	-		
WESTMINSTER	1.84	T	T	-	-	-	0.02	0.03	-	-	0.21	-	-	-	-	0.58	0.02	-	0.06	-	-	-	-	-	-	0.13	0.78	T	0.01	-	-		
<b>APPALACHIAN</b>																																	
<b>MOUNTAIN 07</b>																																	

DAILY PRECIPITATION (INCHES)

STATION	TOTAL	DAY OF MONTH																														
		01	02	03	04	05	06	07	08	09	10	11	12	13	14	15	16	17	18	19	20	21	22	23	24	25	26	27	28	29	30	31
CUMBERLAND 2	1.22		0.01					T	0.06	T			0.12	T					0.14	0.07		T					0.18	0.64		T	T	
FROSTBURG 2	1.44		0.01				0.07	0.06	T			0.16	0.03	T					0.11	0.07	T	0.08	T	T		T	0.18	0.64	T	0.03		
SHARPSBURG 5 S	1.87		0.02					0.04	T			0.16							0.29	0.08							0.09	1.14	T	0.05	T	
WILLIAMSPORT	1.33							0.03				0.21							0.05	0.11							0.09	0.84				
<b>ALLEGHENY PLATEAU 08</b>																																
OAKLAND 1 SE	3.27	0.07					0.24	0.25	0.13	0.02		0.50	0.25	0.17	0.01		0.01	0.05	0.10		0.20	0.04	0.04	0.06	T	0.08	0.80	0.12	0.13			
SAVAGE RIVER DAM R	1.28		T				0.05	0.09	T			0.12		T				0.07	T	T	0.06	T	T		T	0.14	0.75		T			
<b>DELAWARE</b>																																
<b>NORTHERN 01</b>																																
BEAR 2 SW	3.05	T	0.12				0.07	0.04			0.37	0.03					0.10	0.49	0.04		0.10				T	1.65	0.01	0.03	T		T	
NEWARK UNIV FARM R	M	-	-	-	-	-	-	-	-	-	-	-	-	-	-	-	-	-	-	-	-	-	-	-	-	-	-	-	-	-	-	
WILMINGTON NEW CASTLE R	3.22	T	0.14				0.11	0.04			0.41	0.03					0.12	0.55	0.07		0.14					1.57	0.01	0.03	T		T	
WILMINGTON PORTER RES	2.72		0.13				0.16	0.25			0.13	0.40					0.07	0.48	0.12		0.10					0.85	0.03	T	T			
<b>SOUTHERN 02</b>																																
DOVER	3.10		0.10				0.08	0.14				0.21						1.35			0.06							1.15	0.01			
LEWES	M	-	-	-	-	-	-	-	-	-	-	-	-	-	-	-	-	-	-	-	-	-	-	-	-	-	-	-	-	-	-	

## DAILY TEMPERATURES (°F)

STATION	OB. TIME	MAX/MIN	DAY OF MONTH																															AVERAGE					
			01	02	03	04	05	06	07	08	09	10	11	12	13	14	15	16	17	18	19	20	21	22	23	24	25	26	27	28	29	30	31						
<b>MARYLAND SOUTHERN EASTERN SHORE 01</b> ASSATEAGUE	24	MAX MIN																																					M M
PRINCESS ANNE	17	MAX MIN			36	42	44	43	40		34	36	34	34	35				50	48	47				34	50	47	38	42					35	M M				
SALISBURY 2N	17	MAX MIN			24	15	15	14	18		19	18	28	25	20				34	28	20				8	27	32	29	28					30	M M				
SALISBURY FAA AP	24	MAX MIN	58	56	36	41	42	39	38	34	32	35	33	34	34	36	44	41	39	51	50	44	37	24	30	33	50	40	37	41	39	44	35	39.6	M M				
SNOW HILL 4 N	17	MAX MIN	59	56	48	45	44	41	41	36	34	37	34	36	37	47	43	39	52	53	50	45	32	32	34	52	49	40	42	42	48	44	42.8	M M					
<b>CENTRAL EASTERN SHORE 02</b> ROYAL OAK 2 SSW	17	MAX MIN	56	55	44	41	40	39	36	34	35	35	33	35	36	35	44	43	39	37	50	46	39	29	29	32	49	37	37	36	38	43	40	39.4	M M				
<b>LOWER SOUTHERN 03</b> MECHANICSVILLE 5 NE	07	MAX MIN	51	58	49	37	42	42	39	34	34	33	34	31	35	35	34	45	40	32	36	51	44	36	24	29	29	50	35	36	36	38	44	38.5	M M				
SOLOMONS	08	MAX MIN	53	59	49	37	44	41	38	35	33	33	34	31	35	35	34	47	39	35	41	50	42	36	27	29	32	47	36	37	35	40	42	38.9	M M				
<b>UPPER SOUTHERN 04</b> BALTIMORE WASH INTL AP	24	MAX MIN	59	60	39	45	40	39	34	33	35	36	31	33	35	34	41	40	30	36	50	43	36	25	29	29	45	35	36	35	34	42	32	37.8	M M				
BELTSVILLE	08	MAX MIN	51	58	51	38	44	39	39	32	32	33	34	32	33	34	34	43	38	33	35	50	42	33	26	28	30	45	35	34	36	36	42	37.7	M M				
DALECARLIA RSVR	08	MAX MIN	57	57	47	37	43	43	38	32	32	31	32	33	34	34	35	44	35	35	33	46	46	41	27	28	29	45	34	34	34	35	44	37.7	M M				
LAUREL 3 W	24	MAX MIN	56	57	38	44	38	37	32	34	32	34	32	31	33	33	41	41	30	33	49	41	34	23	27	28	44	33	34	33	33	42	33	36.5	M M				
MD SCI CTR BALTIMORE	24	MAX MIN	54	61	39	45	40	39	35	33	34	35	33	34	35	35	43	42	32	39	50	42	37	24	29	29	43	38	37	37	36	44	35	38.4	M M				
NATL ARBORETUM DC	07	MAX MIN	56	50	42	40	45	42		34	32		37	35	36		29	31	26	28	35	37	20	16	19	16	29	33	33	32	29	29	27	27.8	M M				
OXON HILL	08	MAX MIN	51	58	50	39	44	41	40	34	33	34	36	32	34	35	35	45	40	32	35	52	44	34	26	30	31	47	36	37	36	38	44	38.8	M M				
UPPER MARLBORO 3 NNW	08	MAX MIN	54	59	51	39	45	41	41	33	33	34	34	32	34	34	36	44	41	32	35	51	45	35	26	29	30	48	34	36	36	37	45	38.8	M M				
<b>NORTHERN EASTERN SHORE 05</b> CHESTERTOWN	23	MAX	56	56	36	40	37	36	33	30	32	33	32	32	33	32	39	38	38	36	48	40	32	20	22	29	41	34	36	34	36	40	30 <sup>1</sup>	36.0	M M				

DAILY TEMPERATURES (°F)

STATION	OB. TIME	MAX/MIN	DAY OF MONTH																															AVERAGE
			01	02	03	04	05	06	07	08	09	10	11	12	13	14	15	16	17	18	19	20	21	22	23	24	25	26	27	28	29	30	31	
<b>NORTHERN CENTRAL 06</b> ABERDEEN PHILLIPS FLD		MIN	29	34	25	22	26	22	25	23	22	20	20	22	22	20	20	23	25 <sup>1</sup>	34	32	29	19	15	16	12	26	31	29	25	26	19	21	23.6
	07	MAX	44	54	49	40	40	38	37	35	30	33	35	31	33	35	34	37	32	34	37	47	41	33	23	26	27	38	36	36	35	36	40	36.3
CATOCTIN MTN PARK		MIN	24	29	27	19	21	22	25	25	20	18	20	21	21	16	19	24	21	23	32	32	32	11	9	9	11	27	31	30	25	22	23	22.2
	17	MAX	50	48	35	45	36	35	34	26	28	30	28	30	30	29	41	37	29	34	43	35	32	20										34.3
CONOWINGO DAM		MIN	30	28	20	21	24	20	23	19	19	17	18	17	18	19	19	24	24	21	21	29	14	10										20.7
	07	MAX	45	51	47	40	40	38	38	36	32	35	35	32	34	35	36	38	40	36	37	43	38	28	26	29	27	38	35	38	35	36	42	36.8
CYLBURN		MIN	23	27	25	18	18	20	21	20	19	16	18	15	19	15	18	20	21	25	31	28	26	10	6	5	6	20	30	28	22	22	20	19.7
	08	MAX	46	57	49	35	42	35	35	31	29	30	31	30	31	31	30	39	34	30	35	44	37	30	20	24	26	41	33	35	33	32	38	34.6
DAMASCUS 3 SSW		MIN	27	29	24	20	21	20	21	25	19	19	21	21	20	19	19	25	24	23	30	31	27	11	11	7	7	26	28	28	24	21	18	21.5
	22	MAX	50	55	55	34	42	34	35	30	27	29	30	29	31	30	30	38	33	28		42	34	29	20	24	26	42	33	35	34	32	39	34.3
EMMITSBURG 2 SE		MIN	29	36	23	23	23	21	21	24	18	18	18	19	21	19	19	23	23	23		28	28	9	9	6	6	25	26	26	21	20	20	20.8
	07	MAX	46	53	48	37	44	35	36	33	28	31	33	30	31	31	41	34	29	36	41	34	28	22	25	29	39	34	32	33	31	38	34.6	
FREDERICK 2 NNE		MIN	23	29	25	17	17	18	20	24	19	19	15	20	21	20	23	23	22	27	30	28	9	9	4	4	26	28	26	17	22	12	19.9	
	07	MAX	50	54	49	37	45	36	38	38	30	30	33	30	31	32	32	42	35	31	37	45	37	30	25	27	31	41	35	35	36	33	40	36.3
MILLERS 4 NE		MIN	27	28	25	17	18	20	22	22	20	20	17	20	23	21	20	24	25	24	26	31	30	12	12	8	8	28	30	29	23	18	15	21.4
	18	MAX	52	54	39	43	37	35	31	28	31	32	30	31	32	30	36	38	27	32	41	38	31	20	24	26	42	34	33	34	30	39	32	34.3
SMITHSBURG 2NW		MIN	32	39	22	17	25	17	23	21	17	18	21	17	17	16	19	24	21	21	31	28	17	5	6	1	20	29	27	26	17	24	14	20.4
	08	MAX	49	56	51	38	45	31	24	29	24	26	28	28	28	31	28	39	27	29	31	40	35	27	28	22	27	41	32	31	31	30	39	33.1
WESTMINSTER		MIN	27	30	17	16	16	15	19	22	15	14	11	17	16	17	14	20	19	18	31 <sup>1</sup>	29	26	6	9 <sup>1</sup>	2	3	25	26	23	13	15	6	17.1
	07	MAX	52	55	48	36	46	34	36	30	30	30	32	29	31	33	32	39	34	29	33	43	36	30	22	25	27	41	34	36	35	31	40	35.1
<b>APPALACHIAN MOUNTAIN 07</b> CUMBERLAND 2		MIN	27	36	23	18	19	19	21	23	18	18	19	21	20	18	18	24	24	22	26	31	27	9	8	5	5	27	27	27	20	20	15	20.5
	18	MAX	46	48	39	49	40	38	35	30	28	33	30	30	32	32	44	38	33	39	44	37	33	30	28	30	42	34	34	34	33	40	35	36.1
FROSTBURG 2		MIN	31 <sup>1</sup>	34	21	16	25	19	23	20	18	18	20	22	22	21	23	27	24	25	33	28	19	10	18	5	26	32	26	25	20	29	17	22.2
	07	MAX	52	47	35	30	39	28	30	23	19	18	23	24	24	20	24	37	24	25	42	35	27	16	21	15	29	39	28	26	29	34	33	28.9
SHARPSBURG 5 S		MIN	33	35	15	15	18	16	16	12	10	10	11	16	13	13	15	16	16	17	22	21	16	-1	0	-1	2	27	20	20	13	16	11	14.9
	07	MAX	52	57	48	37	48	38	38	34	29	31	32	29	31	32	32	42	36	30	33	43	36	29	24	28	30	43	34	35	35	32	39	36.0
WILLIAMSPORT		MIN	27	28	18	17	17	18	20	25	14	12	14	16	24	16	14	21	22	23	23	25	24	8	8	4	4	25	27	24	17	15	14	18.2
	06	MAX	50	46	46	38	42	39	35	35	37	18	30	36	30	32	33	36	36	30	31	44	32	30	30	26	32	44	33	38	38	35	42	35.6
<b>ALLEGHENY PLATEAU 08</b> OAKLAND 1 SE		MIN	24	22	22	14	14	21	17	18	16	12	14	18	16	18	20	14	18	22	10	20	24	10	10	2	2	23	8	22	21	20	16	16.4
	07	MAX	56	53	37	29	37	30	26	22	18	18	25	27	20	18	22	34	24	28	48	34	28	15	23	17	37	38	31	24	27	39	39	29.8
SAVAGE RIVER DAM		MIN	30	36	15	11	14	11	15	13	9	5	6	15	12	12	15	18	13	18	22	18	15	6	2	11	-9	26	19	20	14	18	21	14.5
	08	MAX	44	43	38	31	39	30	31	25	22	21	26	26	25	24	26	38	27	29	38	36	30	20	22	18	26	41	28	30	31	38	38	30.4
DELAWARE NORTHERN 01 BEAR 2 SW		MIN	30	33	19	16	16	16	16	17	15	12	13	20	18	16	16	15	20	21	23	23	20	4	5	-2	-2	26	22	23	13	15	23	16.8
	24	MAX	58	58	37	41	38	36	35	32	33	34	31	33	31	33	38	37	28	37	45	39	34	23	27	27	39	35	37	36	36	41	32	36.2
		MIN	28	34	21	18	21	20	22	20	23	20	17	16	14	10	17	19	25	28	34	31	19	14	10	9	25	32	25	25	20	20	13	21.0



# DAILY TEMPERATURES (°F)

STATION	OB. TIME	MAX/MIN	DAY OF MONTH																															AVERAGE	
			01	02	03	04	05	06	07	08	09	10	11	12	13	14	15	16	17	18	19	20	21	22	23	24	25	26	27	28	29	30	31		
WILMINGTON NEW CASTLE	24	MAX	56	58	37	41	38	36	33	29	31	31	31	28	30	37	36	28	37	44	38	33	23	27	26	40	35	36	34	36	39	34	35.3		
		MIN	29	32	26	20	22	21	23	22	22	20	18	20	16	14	18	20	24	28	34	28	18	11	11	8	26	31	23	23	24	21	17	21.6	
WILMINGTON PORTER RES	24	MAX	52	55	34	39	35	34	31	31	30	30	29	29	27	29	36	36	27	35	42	37	32	20	23	24	38	35	31	32	32	37	30	33.3	
		MIN	32	31	24	22	24	25	23	22	21	21	20	21	17	15	21	25	23	27	27	30	17	11	13	7	24	30	24	23	23	23	21	22.2	
<b>SOUTHERN 02</b>																																			
DOVER	16	MAX	55	57	45	43	41	37	37	33	32	33	32	32	33	39	39	37	36	49	44	42	36	28	27	46	46	37	36	37	40	38	38.7		
		MIN	36	43	27	25	26	17	22	23	21	17	17	23	21	19	15	23	24	32	34	24	24	10	13	10	27	28	28	27	27	26	19	23.5	
LEWES	17	MAX																																M	
		MIN																																	M

SNOWFALL AND SNOW ON GROUND (INCHES)

STATION		DAY OF MONTH																																	
		01	02	03	04	05	06	07	08	09	10	11	12	13	14	15	16	17	18	19	20	21	22	23	24	25	26	27	28	29	30	31			
<b>MARYLAND</b>																																			
<b>SOUTHERN</b>																																			
<b>EASTERN SHORE 01</b>																																			
PRINCESS ANNE	SNOWFALL	-	-	-	-	-	-	-	-	-	-	-	-	-	-	-	-	-	-	-	-	-	-	-	-	-	-	-	05	T	-	-	-		
SNOW HILL 4 N	SNOWFALL								01	-	-	01	-	-	-	-	-	-	-	-	-	-	-	-	-	-	-	03	-	-	-	-	-		
	SN ON GND	4		-	-	-	-	T	-	-	-	-	-	-	-	-	-	-	-	-	-	-	-	-	-	-	-	-	-	-	-	-	-		
<b>CENTRAL</b>																																			
<b>EASTERN SHORE 02</b>																																			
ROYAL OAK 2 SSW	SNOWFALL	-	-	-	-	-	-	05	-	-	-	05	-	-	-	-	-	-	-	-	-	-	-	-	-	-	T	30	T	-	-	T			
	SN ON GND	T	T	T	T	T	T	T	T	T	T	T	T	T	T	T	-	T	T	-	-	-	-	-	-	-	-	3	2	2	1	1			
<b>LOWER SOUTHERN 03</b>																																			
MECHANICSVILLE 5 NE	SNOWFALL									T		02																20		05					
	SN ON GND	T	T						T	-	-	T	T	T	-	-	T	-	-	-	-	-	-	-	-	-	-	2	1	1	1	T			
SOLOMONS	SNOWFALL								T	T		02																02							
	SN ON GND	T	-					T			T	T															T	T							
<b>UPPER SOUTHERN 04</b>																																			
BALTIMORE WASH INTL AP R	SNOWFALL							T	03		20						06	T		T	02					76	T		T						
	SN ON GND										2	1							T						2	5	5	5	5	5	5				
BELTSVILLE R	SNOWFALL							T	T		16							05							10	40		05							
	SN ON GND							T	T		2							T							1	5	4	5	4	4	2				
DALECARLIA RSVR	SNOWFALL								03		11							05							05	45		05	45						
	SN ON GND								T		1							T							T	5									
	WTR EQUIV								010																		020								
LAUREL 3 W	SNOWFALL	-	-	-	-	-	-	-	-	-	-	-	-	-	-	-	-	-	-	-	-	-	-	-	-	-	70	-	-	-	-	-	-	-	
NATL ARBORETUM DC	SNOWFALL								01	-	-	13							03								T	34							
	SN ON GND							-	T	-	1	T	-					T								T	3	3	-	1	1	2			
OXON HILL	SNOWFALL								T	04		10						01								04	76		08						
	SN ON GND								T		1	T	T					T							T	7	6	6	6	6	5				
UPPER MARLBORO 3 NNW	SNOWFALL	-	-	-	-	-	-	01	01	-	-	11	-	-	-	-	-	01	-	-	-	-	-	-	-	-	-	02	36	-	01	-	-	-	
	SN ON GND	-	-	-	-	-	-	T		-	-	1	T	T	-	-	-	T	-	-	-	-	-	-	-	-	T	4	4	4	4	4	3		
<b>NORTHERN</b>																																			
<b>EASTERN SHORE 05</b>																																			
CHESTERTOWN	SNOWFALL							10	10		10	10						T									60	10	T						
	SN ON GND	-	-	-	-	-	-	-	-	-	1	2	2	1	-	-	-	-	-	-	-	-	-	-	-	-	5	4	3	2	2	2	2		
<b>NORTHERN CENTRAL 06</b>																																			
ABERDEEN PHILLIPS FLD	SNOWFALL							04	02		42							05								21	85		05						
	SN ON GND							T	T		4	1	1	T			T								2	7	6	7	6	6	5				
BRIGHTON DAM	SNOWFALL										20																80								
	SN ON GND										2	-	-	-	-	-	-	-	-	-	-	-	-	-	-	-	8	-	-	-	-	-	-	-	
CATOCTIN MTN PARK	SNOWFALL						T	T	T		15						10	10																	
	SN ON GND	-	-	-	-	-	-	-	-	-	2	-	-	-	-	-	1	2	-	-	-	-	-	-	-	-	-	-	-	-	-	-	-	-	-
CONOWINGO DAM	SNOWFALL										03																43	30							

Snowfall: Includes snow and ice Values for NWS stations (J index note) are Mid-Mid (LST)

Snow on ground: Includes snow, sleet, ice, and hail Values for NWS stations (J index note) are observed at 12 UTC (GMT)

Water Equivalent: Given for NWS stations (J index note) only, when snow depth is 2 inches or more, and is measured at 18 UTC (GMT)

SNOWFALL AND SNOW ON GROUND (INCHES)

STATION	DAY OF MONTH																														
	01	02	03	04	05	06	07	08	09	10	11	12	13	14	15	16	17	18	19	20	21	22	23	24	25	26	27	28	29	30	31
CYLBURN	SN ON GND						-	-	-	-	5	2	2	2	1	1	1	1	1	1	2	1	1	-	-	4	7	6	5	4	5
	SNOWFALL	-					01	01	T			20														23	-	95	-	-	-
DAMASCUS 3 SSW	SN ON GND								T			2	1	1	1	-	-	-	-	-	-	-	-	-	-	2	-	10	-	-	
	SNOWFALL			T			T	08	04			26	T					13	-		04	T		T	T	21	101	T	08	T	
EMMITSBURG 2 SE	SN ON GND						T	1	1	T	T	3	2	1	T	T	T	1	-	T	T	T	T	T	T	2	11	10	10	10	9
	SNOWFALL						05	15				30						30			T					10	80	T	T		
FREDERICK 2 NNE	SN ON GND						1	2	-	-	-	3	-	-	-	-	-	3	-	-	-	-	-	-	-	-	9	9	9	-	-
	SNOWFALL						01	03	05	-	-	30						28	-	-	T	T	T	T	T	-	60	50			
MILLERS 4 NE R	SN ON GND						-	-	-	-	-	3	1	-	-	-	-	3	2	T	T	T	-	1	-	-	6	-	6	6	6
	SNOWFALL						02	12			04	30	T					28				20				50	75	07	01		
POTOMAC FLTR PLT	SN ON GND						T	1	T	T	T	1	1	1	T	T	T	2	1	1	2	2	1	1	1	6	12	12	11	10	10
	WTR EQUIV																	0.50			0.20	0.20				0.60	1.50	1.60	1.60	1.60	1.60
SMITHSBURG 2NW	SNOWFALL										11	-						-	-	-	-	-	-	-	-	03	-	-	-	-	
	SN ON GND	-	-	-	-	-	10	15	-	-	-	30	-	-	-	-	-	15	-	-	-	-	-	-	-	-	05	40	-	-	-
WESTMINSTER	SN ON GND	-	-	-	-	-	-	-	-	-	-	-	-	-	-	-	-	-	-	-	-	-	-	-	-	-	8	-	-	-	-
	SNOWFALL						03	05				30						24			05					22	73	T	02		
APPALACHIAN MOUNTAIN 07	SN ON GND						T	T			3	1	T				2	1	T	1					2	8	7	7	7	7	
	SNOWFALL						T	10	T			12	T					17	-		T					20	80		T	T	
CUMBERLAND 2	SN ON GND						T	1	1	1	-	1	1	1			2	1	-	T					2	10	9	9	8	7	
	SNOWFALL		01				28	13	07			32	23	03				14	-	T	18	T	03	-	T	25	56	02	11		
FROSTBURG 2	SN ON GND	1	T	T			3	3	3	3	3	5	7	5	4	3	3	4	2	2	3	3	3	2	2	4	9	9	9	9	8
	WTR EQUIV	-	-	-	-	-	-	-	-	-	-	-	-	0.60	-	-	-	-	-	-	-	-	-	-	-	-	-	-	120	-	-
SHARPSBURG 5 S	SNOWFALL							08	T			18						16			T				10	90	T	02	T		
	SN ON GND						1	T				2	1	1	T			2	1	T	T				1	9	7	7	7	5	
WILLIAMSPORT	SNOWFALL						02					20						20								05	70				
	SN ON GND											2	-	-	1			2								1					
ALLEGHENY PLATEAU 08	WTR EQUIV																	2.00													
	SNOWFALL						46	60	35	10		90	60	38	04		01	04				50	06	08	02	01	15	117	21	20	
OAKLAND 1 SE	SN ON GND						4	10	13	14	12	18	20	23	22	18	15	12	8	8	11	11	11	11	9	10	21	22	23	18	16
	SNOWFALL	-	-	-	-	-	50	50	-	-	-	-	-	-	-	-	-	-	-	-	-	-	-	-	-	-	-	-	-	-	-
SAVAGE RIVER DAM R	SN ON GND	-	-	-	-	-	2	2	2	2	2	4	4	4	3	2	2	3	2	2	3	2	2	2	2	4	12	11	11	10	8
	SNOWFALL																														
DELAWARE NORTHERN 01	SN ON GND																														
	SNOWFALL						12	05			39	05					07					05				T	103	01	03	T	T
BEAR 2 SW	SN ON GND						T	1	T	T	4	4	3	3	2	1	2	1	T		T	T	T			9	7	6	6	6	6
	SNOWFALL						12	05			39	05					07					05				T	103	01	03	T	T
WILMINGTON NEW CASTLE R	SN ON GND						1	1	1	T	T	4	4	3	3	2	1	2	1	T		T	T	T		1	8	7	6	6	6
	SNOWFALL																														

Snowfall: Includes snow and ice Values for NWS stations (J index note) are Mid-Mid (LST)

Snow on ground: Includes snow, sleet, ice, and hail Values for NWS stations (J index note) are observed at 12 UTC (GMT)

Water Equivalent: Given for NWS stations (J index note) only, when snow depth is 2 inches or more, and is measured at 18 UTC (GMT)

## SNOWFALL AND SNOW ON GROUND (INCHES)

STATION		DAY OF MONTH																																	
		01	02	03	04	05	06	07	08	09	10	11	12	13	14	15	16	17	18	19	20	21	22	23	24	25	26	27	28	29	30	31			
WILMINGTON PORTER RES	SNOWFALL							16	25			20	50					07	60			10													
	SN ON GND	-	-	-	-	-	-	-	-	2	1	-	5	-	-	-		T	6	T	T	1	T	T	T	T	8	8	8	8	-	8			
SOUTHERN 02 DOVER	SNOWFALL							10	30	-	-	-	28	-	-	-	-	-	-	-	-	-	-	-	-	-	-	30	-	-	-	-			
	SN ON GND	-	-	-	-	-	-	-	3	2	1	1	3	3	2	2	1	1	1		-	-	-	-	-	-	-	2	1	1	1	1			

Snowfall: Includes snow and ice Values for NWS stations (J index note) are Mid-Mid (LST)

Snow on ground: Includes snow, sleet, ice, and hail Values for NWS stations (J index note) are observed at 12 UTC (GMT)

Water Equivalent: Given for NWS stations (J index note) only, when snow depth is 2 inches or more, and is measured at 18 UTC (GMT)

# PAN EVAPORATION AND WIND

STATION		DAY OF MONTH																															TOTAL OR AVERAGE		
		01	02	03	04	05	06	07	08	09	10	11	12	13	14	15	16	17	18	19	20	21	22	23	24	25	26	27	28	29	30	31			
MARYLAND UPPER SOUTHERN 04 BELTSVILLE	WIND	-	-	-	-	-	-	-	-	-	-	-	-	-	-	-	-	-	-	-	-	-	-	-	-	-	-	-	-	-	-	-	-	-	M
	EVAP	-	-	-	-	-	-	-	-	-	-	-	-	-	-	-	-	-	-	-	-	-	-	-	-	-	-	-	-	-	-	-	-	-	M
	MAX	-	-	-	-	-	-	-	-	-	-	-	-	-	-	-	-	-	-	-	-	-	-	-	-	-	-	-	-	-	-	-	-	-	M
	MIN	-	-	-	-	-	-	-	-	-	-	-	-	-	-	-	-	-	-	-	-	-	-	-	-	-	-	-	-	-	-	-	-	-	-
UPPER MARLBORO 3 NNW	WIND	-	-	-	-	-	-	-	-	-	-	-	-	-	-	-	-	-	-	-	-	-	-	-	-	-	-	-	-	-	-	-	-	-	M
	EVAP	-	-	-	-	-	-	-	-	-	-	-	-	-	-	-	-	-	-	-	-	-	-	-	-	-	-	-	-	-	-	-	-	-	M
	MAX	49 <sup>x</sup>	49	50	47	45	47	50	44	41	47 <sup>x</sup>	38 <sup>x</sup>	34 <sup>x</sup>	39 <sup>x</sup>	42 <sup>x</sup>	42 <sup>x</sup>	43	47	35	38	48	52	50	37 <sup>x</sup>	38 <sup>x</sup>	37 <sup>x</sup>	40 <sup>x</sup>	34 <sup>x</sup>	38 <sup>x</sup>	34 <sup>x</sup>	35 <sup>x</sup>	47 <sup>x</sup>	42.5		
	MIN	<sup>x</sup>	32	34	33	34	33	34	33	<sup>x</sup>	<sup>x</sup>	<sup>x</sup>	<sup>x</sup>	<sup>x</sup>	<sup>x</sup>	<sup>x</sup>	-	32	32	32	33	33	32	<sup>x</sup>	<sup>x</sup>	<sup>x</sup>	<sup>x</sup>	<sup>x</sup>	<sup>x</sup>	<sup>x</sup>	<sup>x</sup>	<sup>x</sup>	<sup>x</sup>	32.8	
ALLEGHENY PLATEAU 08 SAVAGE RIVER DAM	WIND	-	-	-	-	-	-	-	-	-	-	-	-	-	-	-	-	-	-	-	-	-	-	-	-	-	-	-	-	-	-	-	-	-	M
	EVAP	-	-	-	-	-	-	-	-	-	-	-	-	-	-	-	-	-	-	-	-	-	-	-	-	-	-	-	-	-	-	-	-	-	M
	MAX	-	-	-	-	-	-	-	-	-	-	-	-	-	-	-	-	-	-	-	-	-	-	-	-	-	-	-	-	-	-	-	-	-	-
	MIN	-	-	-	-	-	-	-	-	-	-	-	-	-	-	-	-	-	-	-	-	-	-	-	-	-	-	-	-	-	-	-	-	-	-

Evaporation: Is measured in hundredths of inches.

Wind: Is measured in miles.

Max and Min: The maximum and minimum temperatures (Fahrenheit) of the water in the evaporation pan.

STATION INDEX

STATION	INDEX NO.	DIVISION	COUNTY	LATITUDE	LONGITUDE	ELEVATION (IN FEET)	OBSERVATION TIME AND TABLES			
							LOCAL STD TIME			
							TEMP	PRECIP	EVAP	SPECIAL SEE (NOTES)
MARYLAND										
ABERDEEN PHILLIPS FLD R	0015	06	HARFORD	39 28	76 10W	57	07	07		CH
ASSATEAGUE	0335	01	WORCESTER	38 4	75 13W	10	24	24		H
BALTIMORE WASH INTL AP R	0465	04	ANNE ARUNDEL	39 10	76 41W	156	24	24		CHJ
BELTSVILLE R	0700	04	PRINCE GEORGE'S	39 2	76 56W	145	08	08	EV	CH
BRIGHTON DAM	1125	06	MONTGOMERY	39 11	77 0W	330		07		H
CATOCTIN MTN PARK	1530	06	FREDERICK	39 39	77 29W	1610	17	17		H
CHESTERTOWN	1750	05	KENT	39 13	76 3W	40	23	23		H
CONOWINGO DAM	2060	06	HARFORD	39 39	76 11W	40	07	07		H
CUMBERLAND 2	2282	07	ALLEGANY	39 39	78 45W	730	18	18		H
CYLBURN	2308	06	BALTIMORE	39 22	76 38W	400	08	08		H
DALECARLIA RSVR	2325	04	PRINCE GEORGE'S	38 56	77 7W	150	08	08		H
DAMASCUS 3 SSW	2336	06	MONTGOMERY	39 16	77 14W	697	22	22		H
EMMITSBURG 2 SE	2906	06	FREDERICK	39 41	77 17W	403	07	07		H
FREDERICK 2 NNE	3353	06	FREDERICK	39 26	77 24W	280	07	07		H
FROSTBURG 2	3415	07	ALLEGANY	39 40	78 56W	2170	07	07		H
LAUREL 3 W	5111	04	PRINCE GEORGE'S	39 5	76 54W	400	24	07		H
MD SCI CTR BALTIMORE R	5718	04	BALTIMORE (CITY)	39 17	76 37W	20	24	24		CH
MECHANICSVILLE 5 NE	5865	03	ST MARY'S	38 28	76 42W	100	07	07		H
MILLERS 4 NE R	5934	06	CARROLL	39 43	76 48W	860	18	18		CH
NATL ARBORETUM DC	6350	04	PRINCE GEORGE'S	38 55	76 58W	50	07	07		H
OAKLAND 1 SE	6620	08	GARRETT	39 25	79 24W	2420	07	07		H
OXON HILL	6800	04	PRINCE GEORGE'S	38 48	76 60W	120	08	08		H
POTOMAC FLTR PLT	7272	06	MONTGOMERY	39 2	77 15W	270		08		H
PRINCESS ANNE	7330	01	SOMERSET	38 13	75 41W	20	17	17		H
ROYAL OAK 2 SSW	7806	02	TALBOT	38 43	76 11W	10	17	17		H
SALISBURY 2N	8004	01	WICOMICO	38 24	75 36W	20	17	17		H
SALISBURY FAA AP	8005	01	WICOMICO	38 20	75 31W	48	24	24		H
SAVAGE RIVER DAM R	8065	08	GARRETT	39 31	79 8W	1495	08	08	EV	CH
SHARPSBURG 5 S	8207	07	WASHINGTON	39 24	77 43W	500	07	07		H
SMITHSBURG 2NW	8371	06	WASHINGTON	39 40	77 35W	670	08	08		H
SNOW HILL 4 N	8380	01	WORCESTER	38 14	75 23W	30	17	17		H
SOLOMONS	8405	03	CALVERT	38 19	76 27W	12	08	08		H
UPPER MARLBORO 3 NNW	9070	04	PRINCE GEORGE'S	38 52	76 47W	100	08	08	EV	H
WESTMINSTER	9440	06	CARROLL	39 34	76 59W	765	07	07		H
WILLIAMSPORT	9570	07	WASHINGTON	39 36	77 50W	360	06	06		H
DELAWARE										
BEAR 2 SW	1200	01	NEW CASTLE	39 36	75 44W	80	24	24		H
DOVER	2730	02	KENT	39 15	75 31W	30	16	16		H
LEWES	5320	02	SUSSEX	38 47	75 8W	15	17	17		H
WILMINGTON NEW CASTLE R	9595	01	NEW CASTLE	39 40	75 36W	79	24	24		CHJ
WILMINGTON PORTER RES	9605	01	NEW CASTLE	39 46	75 32W	270	24	24		H

# REFERENCE NOTES

**STATION NAMES:** Name of the city, town or locality. Figures and letters following the station names indicate the distance in miles and direction from the post office or town community center.

**DIVISIONS:** Areas within a state of similar climatological characteristics. Division averages are calculated using data from stations that record both temperature and precipitation (i.e. not precipitation alone).

**NORMALS:** The average value of the meteorological element over a time period. Effective 1 January 2002, the averaging period is 1971 to 2000. The normals for National Weather Service localities have been adjusted so as to be representative for the current observation site.

**MONTHLY DEGREE DAY TOTALS:** One heating (cooling) degree day is accumulated for each whole degree that the daily mean temperature is below (above) 65 degrees Fahrenheit.

**PRECIPITATION:** Values shown in hundredths of inches are water equivalent totals, i.e., total of liquid and melted frozen precipitation. In the "Monthly Summarized Data" table the total snow and sleet values shown in tenths of inches are unmelted amounts. The max depth on ground values of snow and sleet shown in whole inches are cumulative unmelted amounts. The number of days with .10, .50, 1.00 or more refers to water equivalents.

**PRECIPITATION QUALITY CONTROL:** The NCDC quality control process may flag precipitation data that are spatially inconsistent, exceed climatological limits, or are inconsistent with prevailing weather patterns.

**TEMPERATURE:** Original temperature values are given in the "Daily Temperature" table. Summary temperature information (averages, departures, extremes, monthly degree day totals) is based on the values labeled MAX/MIN.

**WIND:** (As shown in the "Evaporation and Wind" table) the total wind movement in miles over the evaporation pan as determined by an anemometer recorder located 6-8 inches above the pan.

## SYMBOLS AND LETTERS USED IN THE STATION INDEX TABLE

- C Station is equipped with recording rain gage (R) but values in this bulletin are from a non-recording rain gage unless indicated by an R.
- G Observations appear in the "Soil Temperatures" table.
- H Observations appear in the "Snowfall and Snow on the Ground" table.
- J Station also published as a Local Climatological Data publication.
- VAR Observation time varies.
- SR Observation time near sunrise.
- SS Observation time near sunset.

## SYMBOLS AND LETTERS USED IN THE DATA TABLES

(DAILY DATA ARE FOR THE 24 HOURS IMMEDIATELY PRECEDING OBSERVATION TIME.)

**BLANK** Entries in the "Monthly Summarized Data" table indicate no record.

**BLANK** Entries in the "Daily Precipitation" and "Snowfall and Snow on the Ground" tables indicate zero.

**BLANK** Entries in the "Daily Temperature" table indicate a missing record

- No record. Data not recorded or not received in time for publication.

+ Precipitation or temperature extremes occurred on one or more previous dates during the month.

\* Rain gage not read. Precipitation is included in the amount following the asterisks. Time distribution may not be known. A \* preceding the monthly total indicates precipitation amount is being carried forward to next month's total, and may include amounts from the previous month(s).  
a As a subscript, indicates accumulated total.

A Amount of precipitation is the total of observer's entries for the current month. It may include precipitation that occurred during the previous month. Refer to earlier bulletin to determine date of last reading. (Hawaii stations)

F Monthly calculation flagged value. F is appended to average and/or total values computed which exclude one or more daily data values that have been flagged by the GHCN-Daily Dataset

M Insufficient or partial data. M is appended to average and/or total values computed with 1-9 daily values missing. M appears alone if 10 or more daily values are missing, (8 or more for wind and evaporation).

N Indicates snow fall or Snowdepth totals are computed with one or more missing days.

R Amounts from recording rain gage.

T Trace. An amount too small to measure.

**SEASONAL TABLES:** Monthly and seasonal snowfall and heating degree days for the 12 months ending with the June data are published in the July issue of this bulletin. Cooling degree days for the calendar year are published in the "Climatological Data Annual Summary."

Information concerning the history of changes in locations, exposure, etc. of substations is kept on file at the National Climatic Data Center. Historical information of regular National Weather Service Offices may be obtained from the "Local Climatological Data" annual publication. The contents of this publication may be reprinted or otherwise used freely, with proper credit to the National Climatic Data Center. The data are also available digitally.

Effective with the January 2011 Data-Month, COOP Observer Names are no longer included in the Monthly and Annual Climatological Data Publications. This information is not published to ensure the privacy of personal information pursuant to Section 208 of the E-Government Act of 2002 (44 USC 3601).

The GHCN-Daily Quality Control Flags shown below are displayed as superscripts with the data. For more Information on Global Historical Climatology Network - Daily and flags, see:  
<http://www.ncdc.noaa.gov/oa/climate/ghcn-daily/>  
and

Comprehensive Automated Quality Assurance of Daily Surface Observations.

Durre, Imke, Matthew J. Menne, Byron E. Gleason, Tamara G. Houston,

Russell S. Vose, 2010: J. Appl. Meteor. Climatol., 49, 16151633.

doi: 10.1175/2010JAMC2375.1

Blank = Passed All checks

D = failed duplicate check

G = failed gap check

I = failed internal consistency check

K = failed streak/frequent-value check

L = failed check on length of multiday period

M = failed megaconsistency check

N = failed naught check

O = failed climatological outlier check

R = failed lagged range check

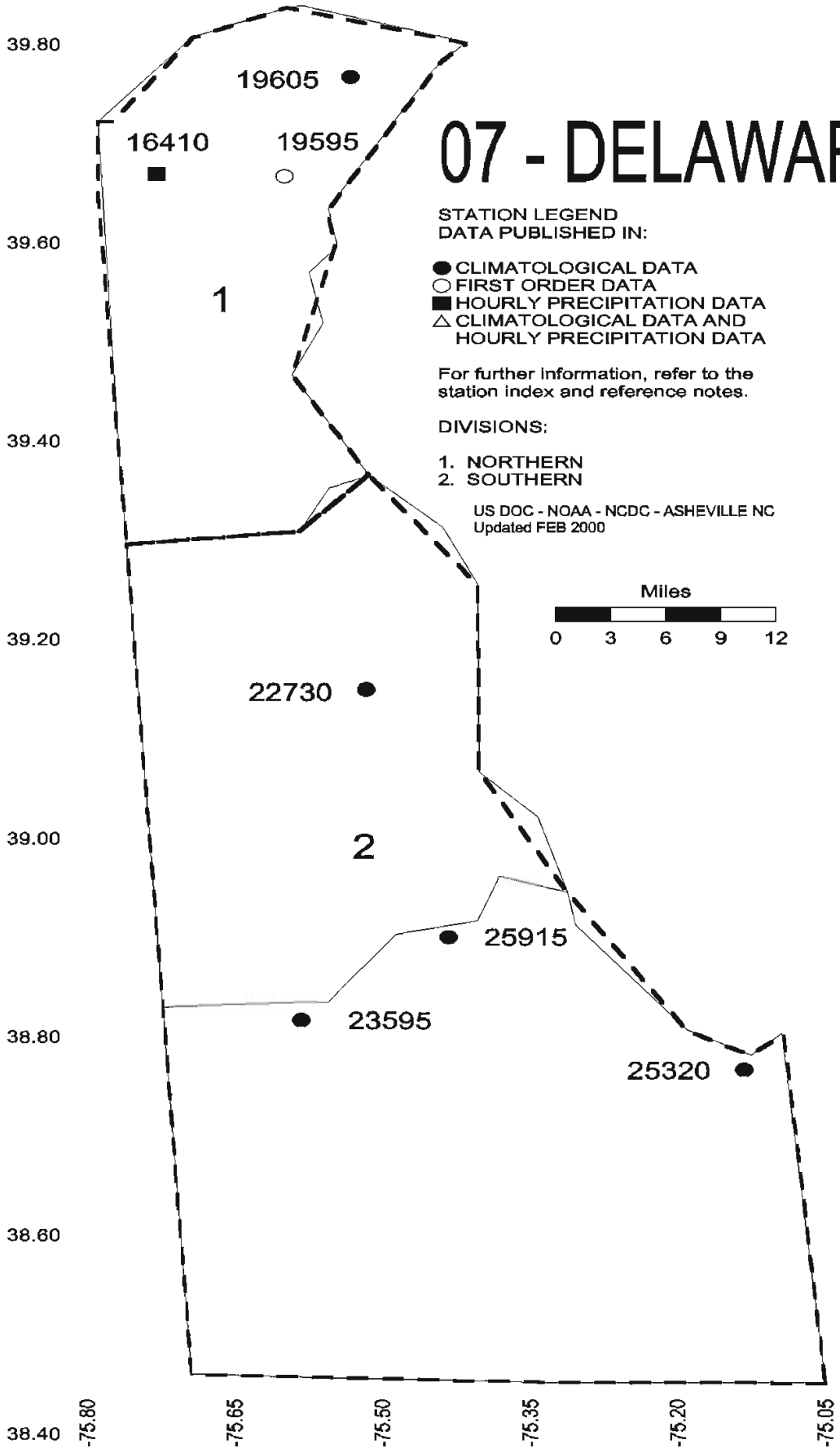
S = failed spatial consistency check

T = failed temporal consistency check

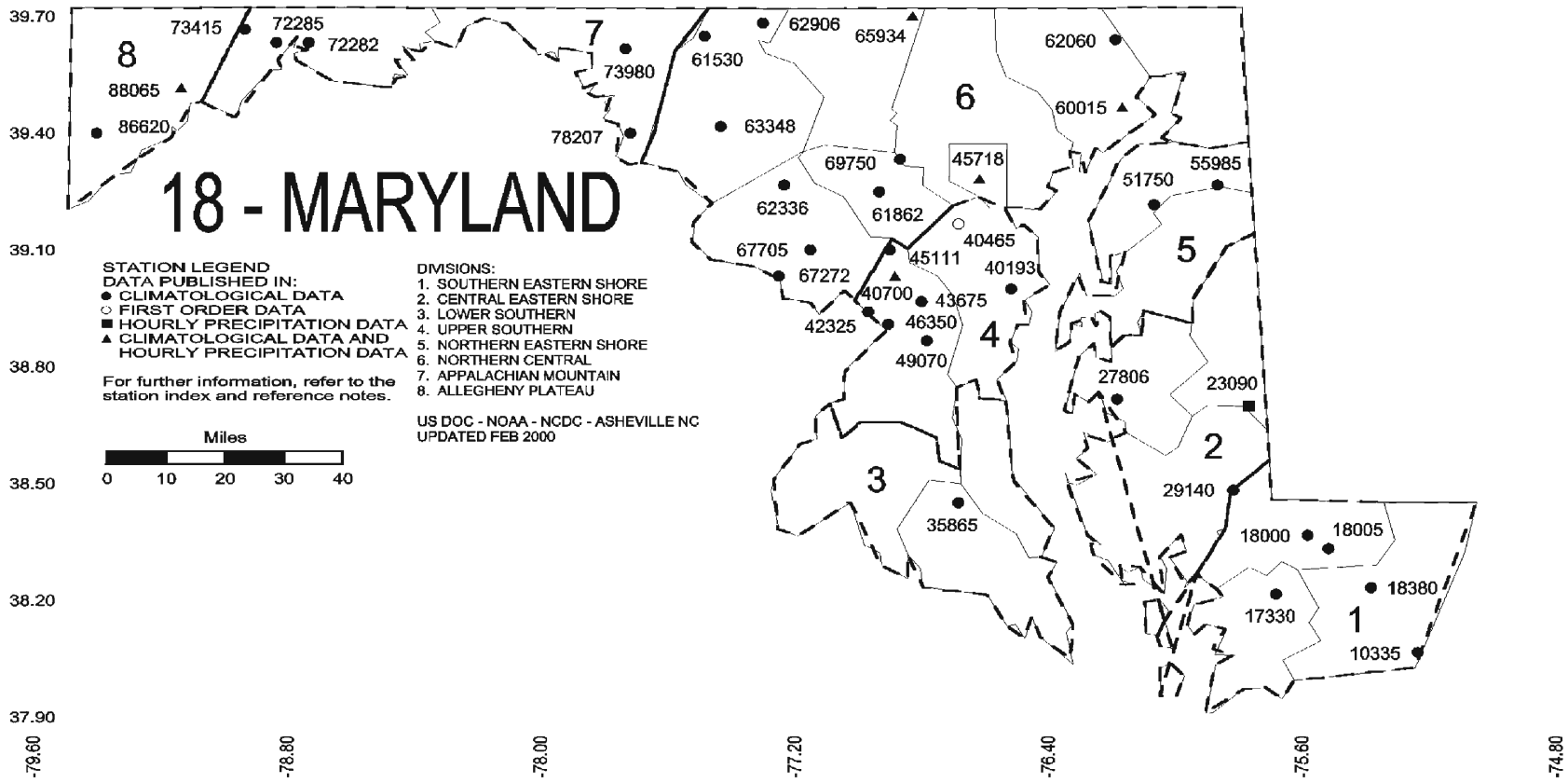
W = temperature too warm for snow

X = failed bounds check

# 07 - DELAWARE







## **These and other publications are available from the National Climatic Data Center**

### **Hourly Precipitation Data**

This publication contains hourly precipitation amounts obtained from recording rain gages located at National Weather Service, Federal Aviation Administration, and cooperative observer stations. Published data are displayed in inches and tenths or inches and hundredths at local standard time. HPD includes maximum precipitation for nine (9) time periods from 15 minutes to 24 hours, for selected stations.

### **Climatological Data**

Monthly editions contain station daily maximum and minimum temperatures and precipitation. Some Stations provide daily snowfall, snow depth, evaporation, and soil temperature data. Each edition also contains monthly summaries for heating and cooling degree days (65 degree F base). The July issue contains a recap of monthly heating degree days and snow data for the preceding July through June.

The Annual issue contains monthly and annual averages of temperature, precipitation, temperature extremes, freeze data, soil temperatures, evaporation, and a recap of monthly cooling degree days.

### **Storm Data**

Monthly issues contain a chronological listing, by states, of occurrences of storms and unusual weather phenomena. Reports contain information on storm paths, deaths, injuries, and property damage. An "Outstanding storms of the month" section highlights severe weather events with photographs, illustrations, and narratives. The December issue includes annual tornado, lightning, flash flood, and tropical cyclone summaries.

### **Monthly Climatic Data for the World**

This publication contains monthly means for temperature, pressure, precipitation, vapor pressure, and sunshine for approximately 2,000 surface data collection stations worldwide and monthly mean upper air temperatures, dew point depressions, and wind velocities for approximately 500 observing sites.

### **Local Climatological Data**

LCD publications summarize temperature, relative humidity, precipitation, cloudiness, wind speed and direction observations for several hundred cities in the U.S. and its territories. Each monthly publication also contains 3 hourly weather observations for that month and a hourly summary of precipitation. Annual LCD publications contain a summary of the past calendar year as well as historical averages and extremes.

For Information Call:

(828) 271-4800 Option 2

(828) 271-4010 (TDD)

(828) 271-4876 (Fax)

NOAA\National Climatic Data Center  
Attn: User Engagement & Services Branch  
151 Patton Avenue  
Asheville, NC 28801-5001

PRSRT STD  
POSTAGE & FEES PAID  
United States Department of Commerce  
NOAA Permit No. G-19

**OFFICIAL BUSINESS**  
**PENALTY FOR PRIVATE USE \$300**  
**ADDRESS CORRECTION REQUESTED**

To change your address, please return a copy of the mailing label along with your new address to:

NOAA\National Climatic Data Center  
Attn: User Engagement & Services Branch  
151 Patton Avenue  
Asheville, NC 28801-5001

Customer Services Number: (828) 271-4800, option 2  
TDD : (828) 271-4010  
Fax number: (828) 271-4876

NCDC now offers an annual online subscription for the *Climatological Data* publication. When you purchase this subscription service, you will have **immediate online access** to all previous Climatological Data publications. Your subscription is valid for one year after purchase.

**The total cost is \$42 for online delivery (including back issues).**

To order this and other subscriptions online with your credit card, go to:

**<http://www.ncdc.noaa.gov/oa/mpp/>** and choose subscription.