



CLIMATOLOGICAL DATA ANNUAL SUMMARY MARYLAND AND DELAWARE

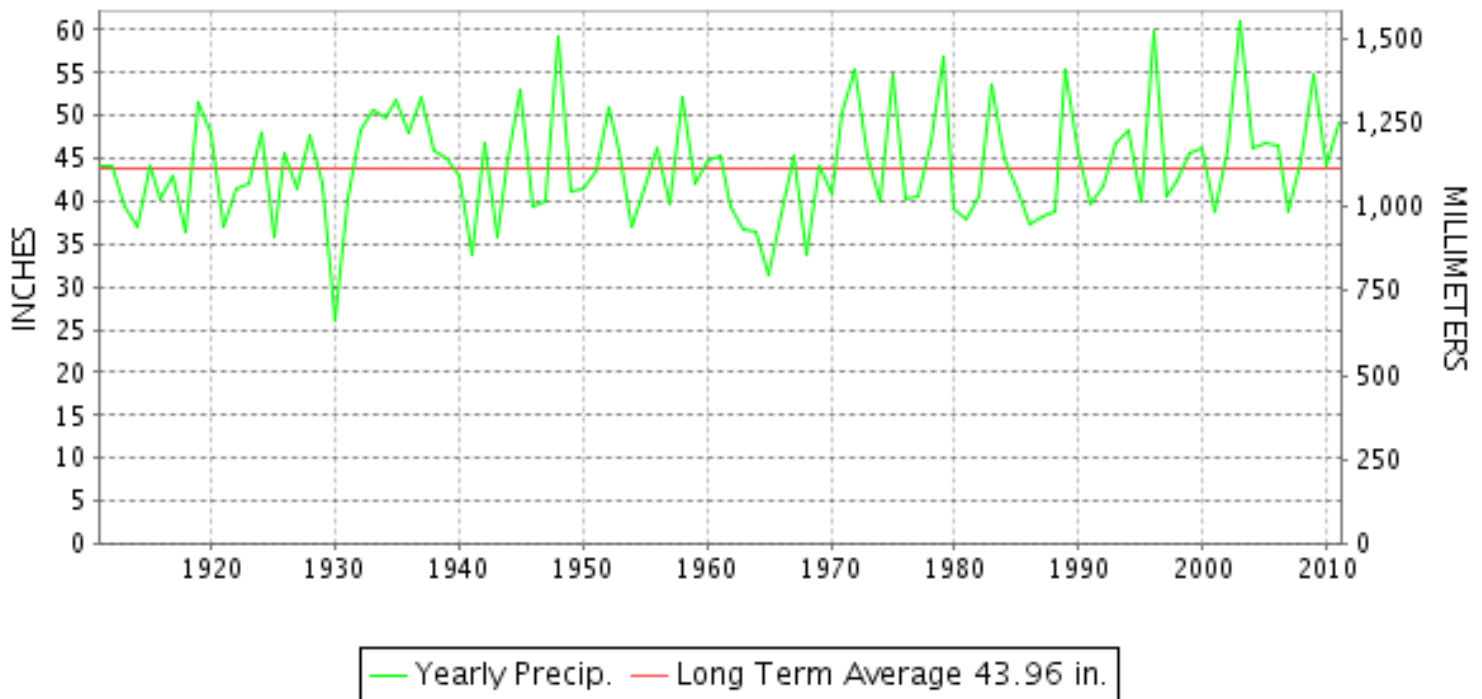
2011

VOLUME 115 NUMBER 13

ISSN 0145-0549

GHCND Ver: 2.93-upd-2012091905

YEARLY TOTAL PRECIPITATION



MARYLAND AND DELAWARE PRECIPITATION 1911-2011

"I certify that this is an official publication of the National Oceanic and Atmospheric Administration (NOAA) It is compiled using information from weather observing sites supervised by NOAA/National Weather Service and received at the National Climatic Data Center(NCDC), Asheville, North Carolina 28801."

DIRECTOR
NATIONAL CLIMATIC DATA CENTER

noaa

National
Oceanic and
Atmospheric Administration

National
Environmental Satellite, Data
and Information Service

National
Climatic Data Center
Asheville, North Carolina

TOTAL PRECIPITATION AND DEPARTURE FROM NORMAL (INCHES)

MARYLAND AND DELAWARE
2011

STATION	JAN		FEB		MAR		APR		MAY		JUN	
	PRECIP.	DEPART.	PRECIP.	DEPART.	PRECIP.	DEPART.	PRECIP.	DEPART.	PRECIP.	DEPART.	PRECIP.	DEPART.
MARYLAND												
SOUTHERN EASTERN SHORE 01												
ASSATEAGUE	M		1.73	-1.86	3.95	-0.31	2.03	-1.22	M		1.98	-0.87
PRINCESS ANNE	M		M		M		M		M		M	
SNOW HILL 4 N	3.14	-0.88	1.17	-2.24	3.58	-1.09	1.39	-1.85	1.47	-2.17	1.73	-1.70
SALISBURY FAA AP	3.01	-1.08	1.71	-1.85	3.53	-1.09	1.66	-1.75	1.68	-2.19	1.19	-2.38
SALISBURY 2N	M		M		M		M		M		M	
--DIVISIONAL DATA----->	3.08	-0.92	1.54	-1.88	3.69	-0.79	1.69	-1.57	1.58	-2.04	1.63	-1.75
CENTRAL EASTERN SHORE 02												
ROYAL OAK 2 SSW	2.29	-1.82	2.40	-0.95	5.72	1.28	M		M		M	
--DIVISIONAL DATA----->	2.29	-1.69	2.40	-0.91	5.72	1.43	M	M	M	M	M	M
LOWER SOUTHERN 03												
MECHANICVILLE 5 NE	3.27	-0.72	1.13	-2.24	6.07	1.44	3.74	0.25	2.87	-1.35	1.22	-3.05
SOLOMONS	FM 1.99		FM 0.92		5.94		FM 3.84		3.41		8.00	
--DIVISIONAL DATA----->	3.27	-0.45	1.13	-1.89	6.01	1.70	3.74	0.54	3.14	-1.00	4.61	0.83
UPPER SOUTHERN 04												
BALTIMORE WASH INTL AP	2.66	-0.81	2.69	-0.33	4.99	1.06	3.52	0.52	2.42	-1.47	3.51	0.08
BELTSVILLE	2.12	-1.31	1.90	-0.79	4.74	0.87	3.49	0.16	2.52	-2.02	2.79	-0.80
DALECARLIA RSVR	1.44	-2.04	1.80	-1.21	6.62	2.49	3.59	0.05	2.61	-1.81	1.19	-2.50
LAUREL 3 W	M		M		M		M		M		M	
MARYLAND SCIENCE CENTER	2.06		2.58		5.26		4.15		2.06		M 1.04	
OXON HILL	2.72		1.58		5.81		5.71		1.98		2.84	
NATL ARBORETUM DC	M 2.91		M 1.63		M 4.22		M 3.24		2.15	-2.14	1.43	-2.20
UPPER MARLBORO 3 NNW	2.04	-1.45	1.64	-1.12	5.33	1.43	3.95	0.67	2.58	-1.73	1.74	-2.09
--DIVISIONAL DATA----->	2.17	-1.38	2.03	-0.89	5.46	1.44	4.07	0.73	2.33	-2.11	2.25	-1.41
NORTHERN EASTERN SHORE 05												
CHESTERTOWN	2.81	-0.75	2.96	-0.07	4.22	0.06	4.95	1.61	2.67	-1.42	M	
--DIVISIONAL DATA----->	2.81	-0.84	2.96	-0.06	4.22	0.10	4.95	1.56	2.67	-1.48	M	M
NORTHERN CENTRAL 06												
ABERDEEN PHILLIPS FLD	FM 2.70		FM 2.25		FM 3.55		FM 2.82		FM 1.69		FM 3.23	
CATOCTIN MTN PARK	M		2.88	-0.45	M		M		FM 2.72		FA 1.43	-3.18
BRIGHTON DAM	M 2.19		2.60	-0.58	5.50	1.21	4.92	1.61	2.96	-1.68	1.20	-2.72
EMMITSBURG 2 SE	2.73	-0.93	2.74	-0.23	6.33	2.38	6.94	3.14	3.73	-0.79	1.08	-3.27
DAMASCUS 3 SSW	M 2.46		2.84		5.22		6.89		3.87		1.57	
CYLBURN	M		FM 2.36		FM 5.28		M		FM 2.63		FM 0.09	
CONOWINGO DAM	2.08	-1.90	2.49	-0.43	7.09	2.93	5.24	1.59	3.15	-1.43	3.19	-0.96
FREDERICK 2 NNE	M 1.64		2.31		5.36		7.14		2.54		M	
MILLERS 4 NE	2.77	-0.87	3.00	0.10	6.31	2.54	7.78	4.33	4.65	0.37	1.87	-1.75
POTOMAC FLTR PLT	M 0.23		M		M		M		M		M	
SMITHSBURG 2NW	1.47		M 2.53		4.92		15.27		3.67		M 1.31	
WESTMINSTER	1.84	-1.31	M		5.54	1.98	7.20	3.91	M 3.35		M 1.40	
--DIVISIONAL DATA----->	2.18	-1.42	2.69	-0.23	5.78	1.75	7.67	4.14	3.51	-1.11	1.78	-2.27
APPALACHIAN MOUNTAIN 07												

TOTAL PRECIPITATION AND DEPARTURE FROM NORMAL (INCHES)

MARYLAND AND DELAWARE
2011

STATION	JUL		AUG		SEP		OCT		NOV		DEC		ANNUAL	
	PRECIP.	DEPART.	PRECIP.	DEPART.	PRECIP.	DEPART.	PRECIP.	DEPART.	PRECIP.	DEPART.	PRECIP.	DEPART.	PRECIP.	DEPART.
MARYLAND														
SOUTHERN EASTERN SHORE 01														
ASSATEAGUE	5.08	1.46	9.67	5.49	3.99	0.29	2.01	-1.29	2.43	-0.73	1.18	-2.03		
PRINCESS ANNE	M		M 10.42		FM 3.51		M		M		M			
SNOW HILL 4 N	3.78	-0.70	11.52	6.12	3.12	-0.63	M 2.42		2.33	-0.98	1.49	-1.92	M 37.14	-9.04
SALISBURY FAA AP	3.77	-0.77	11.75	6.76	4.75	1.02	2.00	-1.64	2.31	-0.99	1.69	-2.03	39.05	-7.99
SALISBURY 2N	M		M		M		M		M		M			
--DIVISIONAL DATA----->	4.21	-0.10	10.98	6.24	3.95	0.19	2.01	-1.36	2.36	-0.82	1.45	-1.95	38.17	-6.75
CENTRAL EASTERN SHORE 02														
ROYAL OAK 2 SSW	3.13	-1.09	M		M		2.44	-1.02	3.95	0.52	4.17	0.50		
--DIVISIONAL DATA----->	3.13	-1.06	M	M	M	M	2.44	-0.80	3.95	0.66	4.17	0.68		-1.69
LOWER SOUTHERN 03														
MECHANICSVILLE 5 NE	4.11	-0.37	12.55	8.61	F 8.47		F 3.05		3.74	0.31	4.66	1.26	54.88	7.36
SOLOMONS	4.02		FM 11.16		MA 5.11		FMA 0.77		3.30		2.69		M 51.15	
--DIVISIONAL DATA----->	4.07	-0.15	12.55	8.42	M	M	M	M	3.52	0.25	3.68	0.37		8.62
UPPER SOUTHERN 04														
BALTIMORE WASH INTL AP	2.77	-1.08	10.38	6.64	13.32	9.34	3.31	0.15	2.45	-0.67	4.50	1.15	56.52	14.58
BELTSVILLE	2.78	-1.31	12.45	8.76	9.80	5.45	4.42	0.86	1.95	-1.37	4.75	1.45	53.71	9.95
DALECARLIA RSVR	2.58	-1.68	7.49	3.51	10.17	5.87	FA 3.89	0.41	2.05	-1.36	4.46	1.05	47.89	2.78
LAUREL 3 W	M		11.43	7.82	10.87	6.34	4.26	0.64	2.61	-1.37	3.87	0.21		
MARYLAND SCIENCE CENTER	4.06		11.97		10.73		2.67		3.09		4.39		M 54.06	
OXON HILL	3.50		9.86		11.23		3.80		2.38		5.23		56.64	
NATL ARBORETUM DC	2.16	-2.05	8.76	4.86	M 9.09		M 3.68		M 2.31		M 4.84		M 46.42	2.72
UPPER MARLBORO 3 NNW	3.31	-0.80	FM 9.90		13.89	9.89	3.58	-0.08	2.34	-0.91	5.01	1.81	M 55.31	11.62
--DIVISIONAL DATA----->	3.02	-1.12	10.33	6.38	11.43	7.25	3.67	0.19	2.41	-0.97	4.60	1.21	53.77	9.32
NORTHERN EASTERN SHORE 05														
CHESTERTOWN	M		M		M		M		M		M			
--DIVISIONAL DATA----->	M	M	M	M	M	M	M	M	M	M	M	M		-0.72
NORTHERN CENTRAL 06														
ABERDEEN PHILLIPS FLD	2.57	-1.64	FM 5.45		FA 6.03	1.55	3.37	-0.02	3.93	0.73	4.36	0.95	M 41.95	-2.27
CATOCTIN MTN PARK	M		4.47	0.55	9.23	4.32	6.53	2.64	FA 3.78	-0.09	3.50	0.06		
BRIGHTON DAM	M 4.08		10.15	6.79	9.14	5.25	4.28	0.67	M 3.10		4.30	0.79	M 54.42	9.74
EMMITSBURG 2 SE	3.98	0.34	4.30	0.70	16.46	12.20	5.04	1.56	4.90	1.10	3.54	0.23	61.77	16.43
DAMASCUS 3 SSW	2.49		8.04		11.12		5.74		3.73		4.22		M 58.19	
CYLBURN	M		M		10.99		3.83		M 3.76		4.52			
CONOWINGO DAM	2.82	-1.38	11.69	7.28	12.26	7.34	M 5.96		4.94	1.18	4.58	0.69	M 65.49	17.40
FREDERICK 2 NNE	M		3.72		10.25		4.51		M		3.41			
MILLERS 4 NE	1.99	-1.58	9.86	6.15	11.64	7.50	4.66	1.22	5.23	1.62	3.72	0.18	63.48	19.81
POTOMAC FLTR PLT	M		M		M		M		M		M			
SMITHSBURG 2NW	1.83		7.19		6.22		M 5.60		4.82		3.54		M 58.37	
WESTMINSTER	3.81	0.10	4.99	1.35	9.73	5.71	M		5.00	1.76	3.34	0.13		
--DIVISIONAL DATA----->	2.78	-1.18	7.16	3.32	10.70	6.37	4.75	1.24	4.65	1.03	3.91	0.41	57.56	12.05
APPALACHIAN MOUNTAIN 07														

TOTAL PRECIPITATION AND DEPARTURE FROM NORMAL (INCHES)

MARYLAND AND DELAWARE
2011

STATION	JAN		FEB		MAR		APR		MAY		JUN	
	PRECIP.	DEPART.	PRECIP.	DEPART.	PRECIP.	DEPART.	PRECIP.	DEPART.	PRECIP.	DEPART.	PRECIP.	DEPART.
CUMBERLAND 2	1.22	-1.67	2.85	0.42	5.07	1.77	6.00	2.84	7.10	3.13	2.14	-0.98
FROSTBURG 2	1.44	-2.13	3.58	0.48	6.80	2.96	8.04	4.07	8.32	3.56	2.09	-1.75
SHARPSBURG 5 S	1.87		2.26		5.78		8.33		5.45		M	
WILLIAMSPORT	1.33		3.32		5.67		M 8.75		5.74		M 2.64	
--DIVISIONAL DATA----->	1.47	-1.63	3.00	0.38	5.83	2.41	7.46	4.07	6.65	2.44	2.12	-1.40
ALLEGHENY PLATEAU 08												
OAKLAND 1 SE	3.27	-0.24	3.16	-0.02	5.19	1.24	7.90	3.83	5.58	0.74	4.58	-0.02
SAVAGE RIVER DAM	1.28	-1.61	M 2.99		5.23	1.95	8.47	5.09	7.26	3.02	4.12	0.45
SINES DEEP CREEK	M		M		M		M		M		M	
--DIVISIONAL DATA----->	2.28	-1.27	3.16	0.07	5.21	1.34	8.19	4.35	6.42	1.88	4.35	0.14
DELAWARE												
NORTHERN 01												
BEAR 2 SW	3.05		2.83		4.47		4.37		3.63		3.95	
WILMINGTON PORTER RES	2.72		2.04		4.88		4.58		4.58		3.11	
WILMINGTON NEW CASTLE CO AP	3.22	-0.21	2.90	0.09	4.05	0.08	4.71	1.32	3.23	-0.92	2.49	-1.10
--DIVISIONAL DATA----->	3.00	-0.70	2.59	-0.25	4.47	0.36	4.55	0.92	3.81	-0.61	3.18	-0.72
SOUTHERN 02												
DOVER	3.10	-0.84	2.53	-0.51	3.16	-1.24	FA 3.32	-0.15	3.37	-0.92	1.83	-1.94
LEWES	M		M		M		M		M		MA 1.75	-1.40
--DIVISIONAL DATA----->	3.10	-0.89	2.53	-0.65	3.16	-1.24	M	M	3.37	-0.75	1.83	-1.58

TOTAL PRECIPITATION AND DEPARTURE FROM NORMAL (INCHES)

MARYLAND AND DELAWARE
2011

STATION	JUL		AUG		SEP		OCT		NOV		DEC		ANNUAL	
	PRECIP.	DEPART.	PRECIP.	DEPART.	PRECIP.	DEPART.	PRECIP.	DEPART.	PRECIP.	DEPART.	PRECIP.	DEPART.	PRECIP.	DEPART.
CUMBERLAND 2	0.81	-2.61	M 3.51		9.68	6.50	3.84	1.15	3.09	0.18	2.89	0.28	M 48.20	10.99
FROSTBURG 2	0.96	-2.95	M 4.10		7.78	4.16	6.12	2.91	3.28	-0.48	3.14	-0.02	M 55.65	11.09
SHARPSBURG 5 S	M		4.03		6.18		5.53		3.82		M			
WILLIAMSPORT	M 2.39		M 3.87		M 7.39		4.98		M 4.05		M 3.53		M 53.66	
--DIVISIONAL DATA----->	0.89	-2.75	4.03	0.58	7.88	4.39	5.12	2.04	3.40	0.13	3.02	0.15	50.87	10.81
ALLEGHENY PLATEAU 08														
OAKLAND 1 SE	3.50	-1.73	4.00	-0.15	6.24	2.68	6.73	3.61	3.99	0.31	3.16	-0.51	57.30	9.74
SAVAGE RIVER DAM	2.17	-2.02	3.26	-0.11	6.46	2.98	4.47	1.66	3.39	0.39	3.00	0.26	M 52.10	12.58
SINES DEEP CREEK	M		M		6.34		M 7.58		M 4.44		4.39			
--DIVISIONAL DATA----->	2.84	-2.03	3.63	-0.28	6.35	2.75	5.60	2.57	3.69	0.13	3.52	-0.06	55.24	9.59
DELAWARE														
NORTHERN 01														
BEAR 2 SW	5.48		15.02		6.41		3.51		4.01		4.48		61.21	
WILMINGTON PORTER RES	0.88		14.75		5.96		3.75		4.48		5.61		57.34	
WILMINGTON NEW CASTLE CO AP	3.73	-0.55	14.70	11.19	5.93	1.92	3.05	-0.03	4.13	0.94	4.44	1.04	56.58	13.77
--DIVISIONAL DATA----->	3.36	-1.14	14.82	11.10	6.10	1.78	3.44	0.08	4.21	0.83	4.84	1.22	58.37	12.87
SOUTHERN 02														
DOVER	M 4.22		FA 8.63	3.90	3.84	-0.72	3.17	-0.09	FA 0.55	-2.61	4.37	0.87	M 42.09	-4.19
LEWES	FMA 2.46	-1.73	M		MA 1.82	-1.95	M		M		M			
--DIVISIONAL DATA----->	M	M	M	M	3.84	-0.31	3.17	-0.21	M	M	4.37	0.83		-4.80

AVERAGE TEMPERATURES AND DEPARTURES FROM NORMAL(°F)

MARYLAND AND DELAWARE
2011

STATION	JAN		FEB		MAR		APR		MAY		JUN		JUL		AUG		SEP		OCT		NOV		DEC		ANNUAL			
	TEMPERATURE	DEPARTURE.	TEMPERATURE	DEPARTURE.	TEMPERATURE	DEPARTURE.	TEMPERATURE	DEPARTURE.	TEMPERATURE	DEPARTURE.	TEMPERATURE	DEPARTURE.	TEMPERATURE	DEPARTURE.	TEMPERATURE	DEPARTURE.	TEMPERATURE	DEPARTURE.	TEMPERATURE	DEPARTURE.	TEMPERATURE	DEPARTURE.	TEMPERATURE	DEPARTURE.	TEMPERATURE	DEPARTURE.		
MARYLAND																												
SOUTHERN EASTERN SHORE 01																												
ASSATEAGUE	M		41.3	1.7	46.6	1.8	56.4	3.1	M		74.8	3.1	79.2	2.6	78.0	1.8	72.9	1.4	61.4	0.2	53.7	2.1	48.3F	6.7	M			
PRINCESS ANNE	M		41.5M	3.0	M		M		67.5M	3.9	M		M		76.3M	1.9	72.6M	4.7	M		M		M		M		M	
SNOW HILL 4 N	33.6F	-3.7	42.8F	3.3	46.5	0.1	60.1	4.3	68.1	3.4	76.8	3.2	80.8	3.4	77.3	1.6	72.4F	2.6	59.2	0.1	52.7MF	2.7	45.8	5.1	M	59.7	2.5	
SALISBURY 2N	M		M		M		M		M		M		M		M		M		M		M		M		M		M	
SALISBURY FAA AP	31.7	-3.7	40.4	2.7	44.8	0.1	59.2	5.2	67.4	4.8	76.0	4.0	81.5	4.7	76.9	2.0	72.6	4.4	58.8	1.6	52.9	4.7	45.4	6.4	59.0	2.6		
--DIVISIONAL DATA----->	20.3	-15.7	25.7	-12.1	33.8	-11.5	47.6	-6.5	60.6	-2.6	67.3	-4.5	73.2	-3.5	70.9	-4.4	66.0	-3.3	52.4	-5.9	44.5	-4.3	35.3	-5.0	49.8	-79.3		
CENTRAL EASTERN SHORE 02																												
ROYAL OAK 2 SSW	32.5	-3.6	41.1	2.6	47.1F	0.4	M		M		M		81.2	2.6	M		M		59.2	-0.6	52.2	2.1	45.2	4.4	M			
--DIVISIONAL DATA----->	32.5	-2.3	41.1	4.2	47.1	1.8	M	M	M	M	M	M	81.2	3.5	M	M	M	M	59.2	1.0	52.2	4.1	45.2	5.9	M	18.2		
LOWER SOUTHERN 03																												
MECHANICSVILLE 5 NE	30.7	-4.2	38.4	0.5	44.3	-1.9	57.1	1.8	64.4	0.5	73.2	1.2	78.2	1.6	73.8	-1.0	68.4	0.1	55.4	-1.3	49.6	1.7	41.7	2.2	56.3	0.1		
SOLOMONS	33.4	-3.9	41.0M	1.7	46.0	-0.2	58.9	2.5	67.9M	2.3	76.9	1.4	82.0	2.4	78.6	0.1	73.1	1.1	60.9	-0.5	53.7	2.0	46.4	5.2	M	59.9		
--DIVISIONAL DATA----->	32.1	-1.9	39.7	2.8	45.2	0.0	58.0	3.8	66.2	2.8	75.1	3.4	80.1	3.8	76.2	1.5	70.8	2.7	58.2	1.3	51.7	4.4	44.1	5.3	58.1	29.9		
UPPER SOUTHERN 04																												
BALTIMORE WASH INTL AP	30.3	-2.0	38.5	3.0	44.4	0.7	57.7	4.5	67.2	4.3	75.7	3.9	81.7	5.2	75.9	1.4	69.3	1.9	56.7	1.3	50.6	5.1	42.3	5.6	57.5	2.9		
BELTSVILLE	30.2	-2.7	37.6	1.9	44.4	0.7	57.3	3.6	66.6	3.2	75.4	2.5	80.2	2.9	76.4	0.6	70.3	1.9	56.5	0.1	50.1	3.3	41.4	4.5	57.2	2.1		
DALECARLIA RSVR	30.7	-3.5	37.4	-0.4	45.7	0.2	59.4	3.2	68.0	2.9	75.9	1.8	81.6	3.3	77.0	0.2	69.9	0.2	55.3	-2.5	50.0	2.4	41.9F	4.3	57.7	1.3		
MARYLAND SCIENCE CENTER	33.1	-2.7	41.1	2.5	47.1	0.8	61.1	4.5	71.8	5.7	80.8M	4.7	87.2	6.5	80.6	1.6	73.9	1.9	61.0	0.9	54.8	4.5	47.1	7.7	M	61.6		
LAUREL 3 W	30.4	-3.2	39.1	2.8	44.7	0.1	58.9	3.8	68.4	3.4	76.9F	3.1	M		76.9	-0.2	70.3	0.9	56.8	-1.3	51.6	3.8	42.9	5.1	56.1	0.0		
OXON HILL	31.9	-3.2	39.2	1.3	46.0	0.6	58.6	2.1	67.3	2.3	76.0	1.6	81.1	2.8	77.2	0.3	70.7	1.0	57.2	-0.7	50.9	2.5	43.0	4.4	58.3			
NATL ARBORETUM DC	31.4M	-4.1	39.0M	0.6	46.4M	0.2	58.4M	2.0	68.6	2.7	78.1	3.0	83.4	3.8	79.0M	1.0	73.5M	3.2	58.3M	-0.2	51.9M	3.1	42.6M	3.4	M	59.2	3.4	
UPPER MARLBORO 3 NNW	30.6	-2.9	37.7	1.5	44.4	0.2	57.6	3.3	66.9	3.4	75.6	2.9	80.5	3.5	76.1	1.0	70.2	2.4	56.3	-0.1	49.9	2.8	41.6	4.2	57.3	2.7		
--DIVISIONAL DATA----->	31.1	-2.2	38.7	2.4	45.4	0.9	58.6	4.5	68.1	4.5	76.8	4.5	82.2	5.1	77.4	2.0	71.0	2.7	57.3	0.9	51.2	4.5	42.9	5.3	58.4	35.1		
NORTHERN EASTERN SHORE 05																												
CHESTERTOWN	29.8F	-3.4	37.2F	1.3	43.7MF	-0.7	56.8F	2.7	66.7F	2.8	M		M		M		M		M		M		M		M		M	
--DIVISIONAL DATA----->	29.8	-2.9	37.2	1.9	43.7	-0.1	56.8	3.5	66.7	3.7	M	M	M	M	M	M	M	M	M	M	M	M	M	M	M	M	6.1	
NORTHERN CENTRAL 06																												
ABERDEEN PHILLIPS FLD	29.3	-4.3	35.7M	-1.1	43.3	-1.5	55.9M	1.3	66.0	2.1	74.4	2.2	80.8	3.8	75.6	0.2	70.0	1.1	56.0	-1.3	49.1	1.5	41.9	3.6	M	56.5	0.6	
CATOCTIN MTN PARK	27.5M	-2.5	35.3	2.5	M		M		62.2M	0.7	70.8	1.4	M		71.6	0.0	65.8	1.0	52.6	-2.1	48.5	4.1	39.2	5.5	M			
CONOWINGO DAM	28.3	-3.6	34.4	-0.3	42.8F	0.0	55.2	1.7	65.7	1.9	75.2	1.5	79.9	1.7	74.8	-1.7	68.8	-0.2	56.3M	-0.6	47.7	1.5	39.7	3.1	M	55.7	1.7	
DAMASCUS 3 SSW	27.6M	-3.8	36.4	2.1	42.6	0.4	56.5	3.4	65.3	3.6	72.3	1.9	78.9	4.6	73.9	0.9	66.9	1.2	54.1	-0.7	49.1	3.9	41.2	5.9	M	55.4		
EMMITSBURG 2 SE	27.3	-2.9	32.9	0.5	41.8	0.9	54.3	3.2	63.7	3.0	71.8	2.0	77.1	2.6	72.6	-0.1	66.7	1.6	53.1	-0.9	46.4	2.5	38.6	4.3	53.9	0.2		
CYLBURN	28.1	-4.5	34.7	-1.0	42.1	-0.7	M		63.9	1.8	72.9M	2.8	78.0	3.7	72.5	-0.4	67.6	2.0	54.5	-1.0	50.2	4.5	41.0	5.2	M	55.0		
FREDERICK 2 NNE	28.9	-2.6	34.7F	0.5	43.2F	1.5	55.8	3.1	66.1F	3.6	M		M		75.7	0.8	68.1	1.0	54.7	-1.1	M		40.1	4.8	M			
MILLERS 4 NE	27.4	-2.7	35.2	2.0	42.0	1.1	56.1	4.4	64.9	4.1	72.0	2.6	78.3	4.9	73.2	1.2	67.7	2.8	53.9	-0.3	48.8	4.4	40.4	6.2	55.0	2.0		
SMITHSBURG 2NW	25.1F	-4.9	31.3	-1.3	40.3F	0.1	52.7F	1.2	63.4F	3.1	70.6MF	0.1	76.6MF	2.1	72.1	-1.0	66.7M	1.4	52.6M	-1.1	46.3	2.3	37.9	4.4	M	53.0		
WESTMINSTER	27.8	-3.8	M		41.1	-1.2	54.6	1.3	63.2M	0.9	73.8M	2.4	79.4	3.9	74.2	0.9	68.2	1.6	M		48.3	3.0	40.1	5.0	M			
--DIVISIONAL DATA----->	27.7	-3.5	34.5	0.5	42.1	-0.6	55.1	2.8	64.4	2.1	72.6	1.9	78.6	3.3	73.6	0.1	67.7	1.1	54.2	-1.1	48.3	3.4	40.0	4.2	54.9	14.2		
APPALACHIAN MOUNTAIN 07																												

AVERAGE TEMPERATURES AND DEPARTURES FROM NORMAL(°F)

MARYLAND AND DELAWARE
2011

STATION	JAN		FEB		MAR		APR		MAY		JUN		JUL		AUG		SEP		OCT		NOV		DEC		ANNUAL		
	TEMPERATURE	DEPARTURE.	TEMPERATURE	DEPARTURE.	TEMPERATURE	DEPARTURE.	TEMPERATURE	DEPARTURE.	TEMPERATURE	DEPARTURE.	TEMPERATURE	DEPARTURE.	TEMPERATURE	DEPARTURE.	TEMPERATURE	DEPARTURE.	TEMPERATURE	DEPARTURE.	TEMPERATURE	DEPARTURE.	TEMPERATURE	DEPARTURE.	TEMPERATURE	DEPARTURE.	TEMPERATURE	DEPARTURE.	
CUMBERLAND 2	29.2F	-1.1	37.8	3.9	43.7	1.0	58.9	6.0	66.9	4.7	72.8	2.6	80.9	6.4	74.6M	1.7	68.0	2.2	53.7	-0.2	47.6	4.0	38.1	3.9	M 56.0	2.9	
FROSTBURG 2	21.9	-4.1	29.6	1.0	36.3	0.2	49.7	2.2	60.2	3.6	66.1	1.0	73.1	4.1	68.8	1.0	62.4	1.4	49.3	-0.7	44.5	4.0	34.1	4.2	M 49.7	2.4	
SHARPSBURG 5 S	27.1	-3.7	34.5	1.2	41.6	0.4	54.0	2.7	63.8	2.7	71.2	1.0	77.1	3.0	73.4	0.6	67.2	1.6	52.6	-2.0	46.7	2.2	M		55.4		
WILLIAMSPORT	26.0	-4.9	32.8	-0.9	41.3	-0.4	54.0M	1.9	64.7	3.2	73.0M	2.5	78.3M	3.1	74.1M	0.0	68.9M	2.3	54.3	-0.3	46.9M	2.2	39.2M	4.8	M 54.5		
--DIVISIONAL DATA----->	26.1	-2.9	33.7	1.6	40.7	0.0	54.2	3.5	63.9	3.6	70.8	2.3	77.4	4.6	72.7	1.5	66.6	2.5	52.5	-0.2	46.4	3.7	37.1	3.6	53.5	23.8	
ALLEGHENY PLATEAU 08																											
OAKLAND 1 SE	22.2	-4.6	30.5	1.2	36.4	-1.5	49.9	2.4	59.8	3.1	66.0	1.7	71.1	2.7	68.0	0.9	62.0	1.2	48.3	-1.7	43.5	3.5	33.8	2.5	49.3	1.0	
SAVAGE RIVER DAM	23.6	-3.7	30.6M	0.7	38.7F	0.9	50.0F	1.3	60.8F	3.1	67.7	1.5	73.3F	3.1	69.8	0.7	63.6MF	1.6	50.2	-0.6	44.3	3.1	35.4	4.1	M 50.7	2.1	
SINES DEEP CREEK	M		M		M		M		M		M		M		M		60.9		47.1M		42.5M		32.5		M		
DELAWARE																											
NORTHERN 01																											
BEAR 2 SW	28.6	-2.8	36.2	1.8	42.5	0.4	56.6	4.1	65.9	4.1	73.1	1.6	79.4	3.4	74.0	-0.5	69.5	3.0	55.5	0.6	49.1	3.8	41.1	5.3	56.0		
WILMINGTON PORTER RES	27.8	-4.0	35.9	1.3	41.6	-0.7	55.0F	2.3	65.7	3.3	73.6	1.9	80.4	4.2	74.4	-0.2	68.8	1.6	55.7	-0.1	49.6	3.4	41.5	5.3	55.8		
WILMINGTON NEW CASTLE CO AP	28.5	-3.9	35.9	0.8	42.3	-0.7	56.0	2.7	66.3	3.5	74.0	1.8	80.8	4.0	75.0	-0.2	69.8	2.0	56.1	-0.1	49.6	3.0	41.4	4.7	56.3	1.9	
--DIVISIONAL DATA----->	26.1	-5.6	33.8	-0.5	40.3	-2.4	53.5	1.1	63.7	1.1	70.9	-0.5	77.0	0.8	72.2	-2.3	65.8	-1.6	52.2	-3.6	46.4	0.6	37.6	1.0	53.3	-11.9	
SOUTHERN 02																											
DOVER	31.1	-4.2	40.5F	2.8	45.4	0.0	59.4	4.8	68.1	3.8	76.3	3.4	82.0M	4.2	76.2	0.0	71.7	1.8	58.3	-0.5	51.9	2.7	45.0	5.1	M 58.8	2.0	
LEWES	M		M		M		M		M		M		M		M		M		M		M		M		M		M
--DIVISIONAL DATA----->	31.1	27.6	40.5	36.9	45.4	41.0	59.4	54.1	68.1	61.8	76.3	69.1	82.0	74.4	76.2	68.7	71.7	64.9	58.3	52.6	51.9	47.1	45.0	41.1	58.8	639.3	

TEMPERATURE EXTREMES AND FREEZE DATA (°F)

MARYLAND AND DELAWARE
2011

STATION	HIGHEST	DATE	LOWEST	DATE	LAST SPRING MINIMUM OF										FIRST FALL MINIMUM OF										NUMBER OF DAYS BETWEEN DATES				
					16° OR BELOW		20° OR BELOW		24° OR BELOW		28° OR BELOW		32° OR BELOW		32° OR BELOW		28° OR BELOW		24° OR BELOW		20° OR BELOW		16° OR BELOW		16° OR BELOW	20° OR BELOW	24° OR BELOW	28° OR BELOW	32° OR BELOW
					DATE	TEMP.	DATE	TEMP.	DATE	TEMP.	DATE	TEMP.	DATE	TEMP.	DATE	TEMP.	DATE	TEMP.	DATE	TEMP.	DATE	TEMP.	DATE	TEMP.					
OAKLAND 1 SE	93	07/23	-9	01/25	03/04	14	03/30	18	03/30	18	04/06	28	04/15	29	10/23	27	10/23	27	11/18	21	12/02	18	12/09	11	280	247	233	200	191
SAVAGE RIVER DAM	95	07/23	-2	01/25	02/12	5	03/03	18	03/30	23	03/30	23	04/07	29	10/23	32	11/05	28	11/19	24	12/11	15	12/11	15	302	283	234	220	199
DELAWARE																													
NORTHERN 01																													
BEAR 2 SW	100	07/23	9	02/23	02/23	9	02/24	18	03/29	22	03/30	26	03/30	26	10/30	31	10/31	27	12/11	22	12/12	20	NONE	NONE		291	257	215	214
WILMINGTON NEW CASTLE	102	07/22	8	01/24	02/23	14	02/24	20	03/29	24	03/30	27	03/30	27	NONE		NONE		NONE		NONE		NONE	NONE					
WILMINGTON PORTER RES	101	07/22	7	01/24	02/11	16	02/22	20	03/03	21	03/29	25	04/06	32	10/30	32	12/11	26	NONE		NONE		NONE	NONE				257	207
SOUTHERN 02																													
DOVER	101	07/22	10	01/24	02/23	15	02/23	15	03/03	23	03/28	27	03/29	29	10/31	32	12/11	25	12/12	22	NONE	NONE	NONE	NONE			284	258	216
LEWES	101	07/25	43	10/03	MSG		MSG		MSG		MSG		MSG		NONE		NONE		NONE		NONE	NONE	NONE	NONE					

MONTHLY AND SEASONAL COOLING DEGREE DAYS

BASE = 65 DEGREES FAHENHEIT

MARYLAND AND DELAWARE
2011

STATION	JAN	FEB	MAR	APR	MAY	JUN	JUL	AUG	SEP	OCT	NOV	DEC	TOTAL	SEASONAL NORM
MARYLAND														
SOUTHERN EASTERN SHORE 01														
ASSATEAGUE	-	0	0	1	-	302	446	411	253	37	0	0	-	
PRINCESS ANNE	-	0	-	-	151E	-	-	356E	240E	-	-	-	-	
SNOW HILL 4 N	0	0	0	63	169	362	498	388	238	32	5E	1	1756E	1194
SALISBURY 2N	-	-	-	-	-	-	-	-	-	-	-	-	-	
SALISBURY FAA AP	0	0	0	57	151	336	520	375	249	28	3	0	1719	1155
CENTRAL EASTERN SHORE 02														
ROYAL OAK 2 SSW	0	0	0	-	-	-	508	-	-	16	1	0	-	
LOWER SOUTHERN 03														
MECHANICSVILLE 5 NE	0	0	1	60	87	256	414	280	139	4	0	0	1241	1093
SOLOMONS	0	0	2	50	130E	366	535	427	256	32	4	0	1802E	
UPPER SOUTHERN 04														
BALTIMORE WASH INTL AP	0	0	0	44	141	328	526	346	164	9	0	0	1558	1147
BELTSVILLE	0	0	0	54	128	317	478	360	167	11	0	0	1535	1109
DALECARLIA RSVR	0	0	0	65	143	335	521	376	185	6	0	0	1631	1258
MARYLAND SCIENCE CENTER	0	0	2	69	236	479E	693	488	280	46	3	0	2296E	
LAUREL 3 W	0	0	0	54	153	368	-	374	191	15	0	0	-	
OXON HILL	0	0	1	63	133	336	506	387	198	10	0	0	1634	
NATL ARBORETUM DC	0	0	2E	48E	152	399	575	443E	258E	27E	0	0	1904E	1243
UPPER MARLBORO 3 NNW	0	0	0	61	131	324	488	352	189	7	0	0	1552	1002
NORTHERN EASTERN SHORE 05														
CHESTERTOWN	0	0	0	38	129	-	-	-	-	-	-	-	-	
NORTHERN CENTRAL 06														
ABERDEEN PHILLIPS FLD	0	0	0	41E	115	290	498	336	190	4	0	0	1474E	1153
CATOCTIN MTN PARK	0	0	-	-	46E	194	-	213	94	0	0	0	-	
CONOWINGO DAM	0	0	0	25	109	314	470	309	152	1E	0	0	1380E	1068
DAMASCUS 3 SSW	0	0	0	42	108	234	440	283	118	0	0	0	1225	
EMMITSBURG 2 SE	0	0	0	36	79	216	381	243	111	0	0	0	1066	918
CYLBURN	0	0	0	-	86	249E	414	243	122	1	0	0	-	
FREDERICK 2 NNE	0	0	0	46	122	-	-	337	137	0	-	0	-	
MILLERS 4 NE	0	0	0	35	100	220	418	260	128	0	0	0	1161	790
SMITHSBURG 2NW	0	0	0	21	75	198E	366E	228	108E	0	0	0	996E	
WESTMINSTER	0	-	0	42	68E	278E	452	291	143	-	0	0	-	
APPALACHIAN MOUNTAIN 07														
CUMBERLAND 2	0	0	0	39	125	243	500	301E	152	0	0	0	1360E	877
FROSTBURG 2	0	0	0	11	38	87	263	142	44	0	0	0	585	344
SHARPSBURG 5 S	0	0	0	35	82	202	381	270	125	0	0	0	-	
WILLIAMSPORT	0	0	0	23E	83	249E	416E	287E	157E	0	0	0	1215E	
ALLEGHENY PLATEAU 08														
OAKLAND 1 SE	0	0	0	9	35	87	203	125	46	0	0	0	505	316
SAVAGE RIVER DAM	0	0	0	12	43	113	267	170	58E	0	0	0	663E	414
SINES DEEP CREEK	-	-	-	-	-	-	-	-	30	0	0	0	-	
DELAWARE														
NORTHERN 01														
BEAR 2 SW	0	0	0	34	117	254	452	282	171	1	0	0	1311	

MARYLAND AND DELAWARE
2011

MONTHLY AND SEASONAL COOLING DEGREE DAYS BASE = 65 DEGREES FAHENHEIT

STATION	JAN	FEB	MAR	APR	MAY	JUN	JUL	AUG	SEP	OCT	NOV	DEC	TOTAL	SEASONAL NORM
WILMINGTON PORTER RES	0	0	0	31	108	264	481	299	160	12	0	0	1355	
WILMINGTON NEW CASTLE CO AP	0	0	0	30	122	278	496	319	183	8	0	0	1436	1125
SOUTHERN 02														
DOVER	0	0	0	54	159	343	533E	356	223	13	0	0	1681E	1262
LEWES	-	-	-	-	-	-	-	-	-	-	-	-	-	

MARYLAND AND DELAWARE
2011

TOTAL PAN EVAPORATION AND WIND MOVEMENT

STATION		JAN	FEB	MAR	APR	MAY	JUN	JUL	AUG	SEP	OCT	NOV	DEC	ANNUAL
MARYLAND														
UPPER SOUTHERN 04														
BELTSVILLE	WIND	-	-	-	2971E	1634E	1443E	939E	1381E	868E	1459	-	-	-
	EVAP	-	-	-	5.71E	5.68E	7.97E	7.79E	7.41E	3.08E	3.09	-	-	-
	MAX TEMP	-	-	-	72.8	82.2	90.3	96.5	89.6	80.7	67.0	57.0	-	-
	MIN TEMP	-	-	-	47.4	57.4	64.7	71.3	66.5	62.7	47.3	37.0	-	-
UPPER MARLBORO 3 NNW														
	WIND	-	-	-	-	-	-	-	-	-	-	-	-	-
	EVAP	-	-	-	-	-	9.00E	-	-	-	-	-	-	-
	MAX TEMP	42.5	52.5	59.2	71.3	84.4	92.9	98.6	91.4	82.2	67.7	59.5	-	-
	MIN TEMP	32.8	35.3	39.5	47.5	59.0	65.3	71.1	67.4	64.2	49.0	41.5	-	-
ALLEGHENY PLATEAU 08														
SAVAGE RIVER DAM														
	WIND	-	-	-	-	-	-	-	-	-	-	-	-	-
	EVAP	-	-	-	-	-	-	-	-	-	-	-	-	-
	MAX TEMP	-	-	-	-	-	-	-	-	-	-	-	-	-
	MIN TEMP	-	-	-	-	-	-	-	-	-	-	-	-	-

STATION INDEX

STATION	INDEX NO.	DIVISION NO.	COUNTY	LATITUDE	LONGITUDE	ELEVATION FEET	YEARS OF RECORD			OPENED OR CLOSED DURING YR		SEE REFERENCE NOTES
							TEMP.	PRECIP.	EVAP.	MONTH OPENED	MONTH CLOSED	
MARYLAND												
ABERDEEN PHILLIPS FLD	0015	06	HARFORD	39 28	76 10W	57	85	85	0			CH
ASSATEAGUE	0335	01	WORCESTER	38 4	75 13W	10	44	44	0			H
BALTIMORE WASH INTL AP R	0465	04	ANNE ARUNDEL	39 10	76 41W	156	73	73	0			HJ
BELTSVILLE	0700	04	PRINCE GEORGE'S	39 2	76 56W	145	71	71	70			CH
BRIGHTON DAM	1125	06	MONTGOMERY	39 11	77 0W	330	11	48	0			H
CATOCTIN MTN PARK	1530	06	FREDERICK	39 39	77 29W	1610	44	44	0			H
CHESTERTOWN	1750	05	KENT	39 13	76 3W	40	97	97	0			H
CONOWINGO DAM	2060	06	HARFORD	39 39	76 11W	40	76	76	0			H
CUMBERLAND 2	2282	07	ALLEGANY	39 39	78 45W	730	38	38	0			H
CYLBURN	2308	06	BALTIMORE	39 21	76 39W	235	9	9	0			H
DALECARLIA RSVR	2325	04	PRINCE GEORGE'S	38 56	77 6W	150	64	64	0			H
DAMASCUS 3 SSW	2336	06	MONTGOMERY	39 15	77 13W	700	19	19	0			H
EMMITSBURG 2 SE	2906	06	FREDERICK	39 41	77 17W	403	56	56	0			H
FREDERICK 2 NNE	3353	06	FREDERICK	39 26	77 24W	280	8	8	0			H
FROSTBURG 2	3415	07	ALLEGANY	39 40	78 56W	2170	40	40	0			H
LAUREL 3 W	5111	04	PRINCE GEORGE'S	39 5	76 54W	400	111	114	0			H
MARYLAND SCIENCE CENTER R R	5718	04	BALTIMORE (CITY)	39 17	76 37W	20	14	13	0			H
MECHANICSVILLE 5 NE	5865	03	ST. MARY'S	38 28	76 42W	100	38	47	0			H
MILLERS 4 NE	5934	06	CARROLL	39 43	76 48W	860	24	24	0			CH
NATL ARBORETUM DC	6350	04	DISTRICT OF COLUMBIA	38 55	76 58W	50	64	64	0			H
OAKLAND 1 SE	6620	08	GARRETT	39 25	79 24W	2420	113	113	0			H
OXON HILL	6800	04	PRINCE GEORGE'S	38 47	76 60W	120	10	10	0			H
POTOMAC FLTR PLT	7272	06	MONTGOMERY	39 2	77 15W	270	7	50	0			H
PRINCESS ANNE	7330	01	SOMERSET	38 13	75 41W	20	116	116	0			H
ROYAL OAK 2 SSW	7806	02	TALBOT	38 43	76 11W	10	64	64	0			H
SALISBURY 2N	8004	01	WICOMICO	38 24	75 36W	20	0	0	0	JAN		H
SALISBURY FAA AP	8005	01	WICOMICO	38 20	75 31W	48	64	64	0			H
SAVAGE RIVER DAM	8065	08	GARRETT	39 31	79 8W	1495	61	67	43			CH
SHARPSBURG 5 S	8207	07	WASHINGTON	39 24	77 43W	500	14	14	0			H
SINES DEEP CREEK	8315	08	GARRETT	39 31	79 25W	2040	37	37	0			H
SMITHSBURG 2NW	8371	06	WASHINGTON	39 40	77 35W	670	11	11	0			H
SNOW HILL 4 N	8380	01	WORCESTER	38 14	75 23W	30	96	96	0			H
SOLOMONS	8405	03	CALVERT	38 19	76 27W	12	101	101	0			H
UPPER MARLBORO 3 NNW	9070	04	PRINCE GEORGE'S	38 51	76 46W	130	55	55	55			H
WESTMINSTER	9440	06	CARROLL	39 34	76 59W	750	29	29	0			H
WILLIAMSPORT	9570	07	WASHINGTON	39 36	77 50W	360	14	46	0			H
DELAWARE												
BEAR 2 SW	1200	01	NEW CASTLE	39 36	75 44W	80	9	9	0			H
DOVER	2730	02	KENT	39 15	75 31W	30	109	109	0			H
LEWES	5320	02	SUSSEX	38 47	75 8W	15	66	66	0			H
WILMINGTON NEW CASTLE CO AP R R	9595	01	NEW CASTLE	39 40	75 36W	79	64	64	0			HJ
WILMINGTON PORTER RES	9605	01	NEW CASTLE	39 46	75 32W	270	80	81	0			H

REFERENCE NOTES

STATION NAMES: Name of the city, town or locality. Figures and letters following the station names indicate the distance in miles and direction from the post office or town community center.

DIVISIONS: Areas within a state of similar climatological characteristics. Division averages are calculated using data from stations that record temperature and/or precipitation. Station Precipitation totals flagged with an 'F' or 'M' are excluded from the Divisional Average calculations of precipitation. Stations with monthly Temperature averages flagged with an 'F' or 'M' are included in the Divisional Average if there are no more than 9 flagged or missing daily values in the month, else they are excluded from the divisional average for temperature.

NORMALS: The average value of the meteorological element over a time period. Effective 1 January 2002, the averaging period is 1971 to 2000. The normals for National Weather Service localities have been adjusted so as to be representative for the current observation site.

TEMPERATURE EXTREMES AND FREEZE DATA: Spring minimum dates are obtained from data for January through June; Fall dates are from July through December data. "NONE" indicates temperature threshold not reached. "MSG" indicates available data insufficient to determine date.

MONTHLY DEGREE DAY TOTALS: One heating (cooling) degree day is accumulated for each whole degree that the daily mean temperature is below (above) 65 degrees Fahrenheit.

SOIL TEMPERATURE EXTREMES: The highest and lowest Max and Min temperature for each month and the year.

WIND: (As shown in the "Evaporation and Wind" table) the total wind movement in miles over the evaporation pan as determined by an anemometer recorder located 6-8 inches above the pan.

SYMBOLS AND LETTERS USED IN THE DATA TABLES

- No record. Data not recorded, determined unreliable by quality control checks, or not received in time for publication.
- * Equipment gage not read. Precipitation is included in the amount following asterisks. Time distribution not known.
- // Equipment gage equipped with a windshield.
- A Amount of precipitation is the total of observer's entries for the current month. It may include precipitation that occurred during the previous month. Refer to monthly bulletins to determine date of last reading.
- E Normalized HDD/CDD Calculation. E is appended to the HDD/CDD Calculation when 1-9 individual daily TMAX and/or TMIN values are missing and a Normalized HDD/CDD Calculation is provided. M appears alone if 10 or more are missing or flagged.
- F Monthly Calculation Flagged Value. F is appended to the average of the monthly station values when 1-9 daily observations were determined to be invalid during the Quality Control process.
- M Insufficient or partial data. M is appended to average and/or total values computed with 1-9 daily values missing. M appears alone if 10 or more daily values are missing or flagged.
- R Amounts from recording rain gage.
- T Trace. An amount too small to measure.

SYMBOLS AND LETTERS USED IN THE STATION INDEX TABLE

- # Thermometers located in rooftop shelter.
- C Station is equipped with a recording rain gage (R), but values in this bulletin are from a non-recording rain gage unless indicated by an R.
- G Observations appear in "Soil Temperatures" table.
- H Observations appear in "Snowfall and Snow on the Ground" table in monthly "Climatological Data" publication.
- J Station also published as a "Local Climatological Data" bulletin.

Seasonal Tables: Monthly and seasonal snowfall and heating degree days for the 12 months ending with the June data are published in the July issue of "Climatological Data".

Cooling degree days for the calendar year are published in the "Climatological Data Annual Summary".

Additional precipitation data are contained in the "Hourly Precipitation Data" bulletin for each state.

Information concerning the history of changes in locations, exposure, etc. of substations is kept on file at the National Climatic Data Center. Historical information of regular National Weather Service Offices may be obtained from the "Local Climatological Data" annual publication. The contents of this publication may be reprinted or otherwise used freely, with proper credit to the National Climatic Data Center. The data are also available digitally.

ERRATA

Beginning in January of 2011, CD Publications are produced from the Global Historical Climatology Network data set. (<http://www.ncdc.noaa.gov/oa/climate/ghcn-daily/>) The GHCND data Version is printed on first page of the publication.

New flags were added to indicate:

- E Normalized HDD/CDD, Evap, and Wind Movement Calculations in 2011, previously was B.
- F Monthly calculation flagged value.

Station metadata is provided by NCDC's Product Development Branch from the Historical Observing Metadata Repository: <http://www.ncdc.noaa.gov/homr>

As of the 2011 Data-Year, Station and Climate Division Maps are no longer being included in the CD Publications. NCDC's Product Development Branch provides updated Station Maps for various data networks via the Historical Observing Metadata Repository: <http://www.ncdc.noaa.gov/homr>.

These and other publications are available from the National Climatic Data Center

Hourly Precipitation Data

This publication contains hourly precipitation amounts obtained from recording rain gages located at National Weather Service, Federal Aviation Administration, and cooperative observer stations. Published data are displayed in inches and tenths or inches and hundredths at local standard time. HPD includes maximum precipitation for nine (9) time periods from 15 minutes to 24 hours, for selected stations.

Climatological Data

Monthly editions contain station daily maximum and minimum temperatures and precipitation. Some Stations provide daily snowfall, snow depth, evaporation, and soil temperature data. Each edition also contains monthly summaries for heating and cooling degree days (65 degree F base). The July issue contains a recap of monthly heating degree days and snow data for the preceding July through June.

The Annual issue contains monthly and annual averages of temperature, precipitation, temperature extremes, freeze data, soil temperatures, evaporation, and a recap of monthly cooling degree days.

Storm Data

Monthly issues contain a chronological listing, by states, of occurrences of storms and unusual weather phenomena. Reports contain information on storm paths, deaths, injuries, and property damage. An "Outstanding storms of the month" section highlights severe weather events with photographs, illustrations, and narratives. The December issue includes annual tornado, lightning, flash flood, and tropical cyclone summaries.

Monthly Climatic Data for the World

This publication contains monthly means for temperature, pressure, precipitation, vapor pressure, and sunshine for approximately 2,000 surface data collection stations worldwide and monthly mean upper air temperatures, dew point depressions, and wind velocities for approximately 500 observing sites.

Local Climatological Data

LCD publications summarize temperature, relative humidity, precipitation, cloudiness, wind speed and direction observations for several hundred cities in the U.S. and its territories. Each monthly publication also contains 3 hourly weather observations for that month and a hourly summary of precipitation. Annual LCD publications contain a summary of the past calendar year as well as historical averages and extremes.

For Information Call:

(828) 271-4800 Option 2

(828) 271-4010 (TDD)

(828) 271-4876 (Fax)

NOAA\National Climatic Data Center
Attn: User Engagement & Services Branch
151 Patton Avenue
Asheville, NC 28801-5001

Customer Services Number: (828) 271-4800, option 2
TDD : (828) 271-4010
Fax number: (828) 271-4876

NCDC now offers free online access to the *Climatological Data* publication.
Go to : www.ncdc.noaa.gov and choose Most Popular.