



CLIMATOLOGICAL DATA

MARYLAND AND DELAWARE

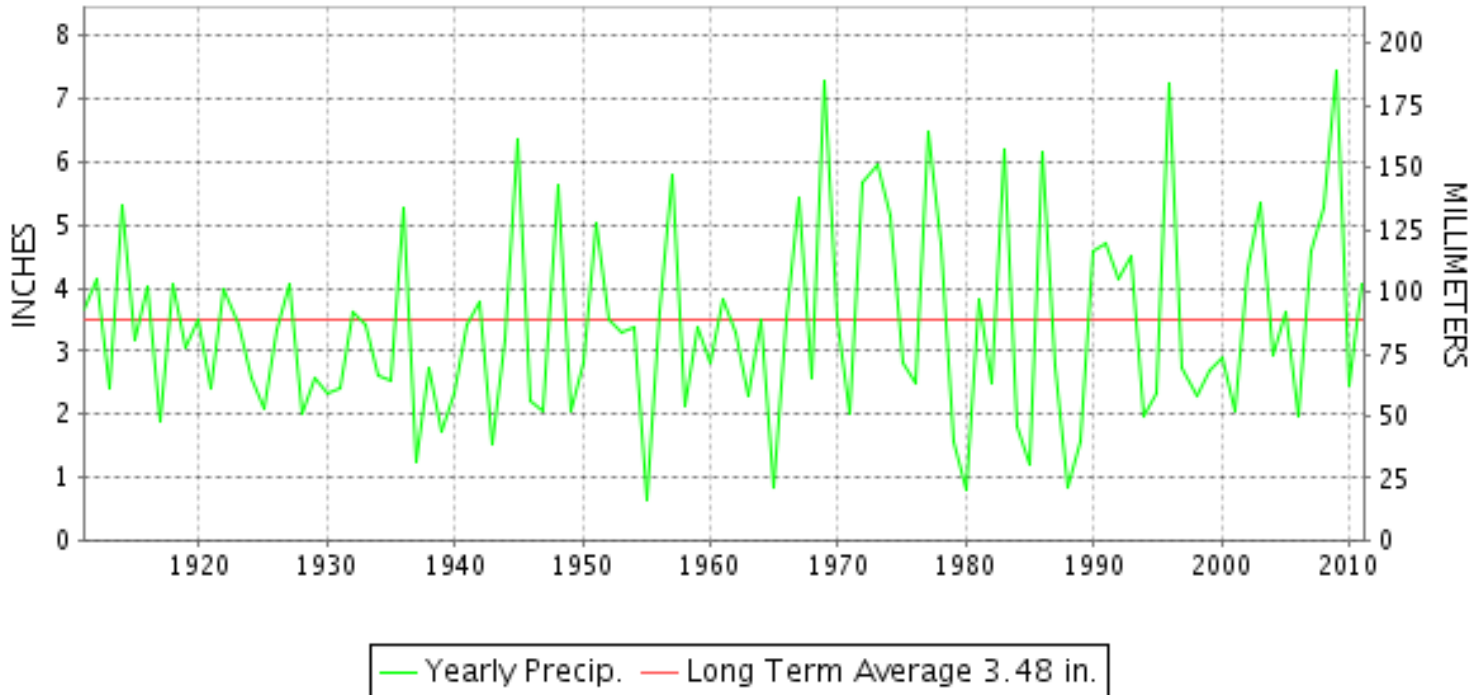
DECEMBER 2011

VOLUME 115 NUMBER 12

ISSN 0145-0549

GHCND Ver: 2.92-upd-2012061209

DECEMBER PRECIPITATION BY YEAR



TEMPERATURE AND PRECIPITATION EXTREMES

MARYLAND

HIGHEST TEMPERATURE	79	DECEMBER 23	ASSATEAGUE
LOWEST TEMPERATURE	8	DECEMBER 11	OAKLAND 1 SE
GREATEST TOTAL PRECIPITATION	5.23		OXON HILL
LEAST TOTAL PRECIPITATION	1.18		ASSATEAGUE
GREATEST 1 DAY PRECIPITATION	2.38	DECEMBER 07+	2 STATIONS
GREATEST TOTAL SNOWFALL	9.4		OAKLAND 1 SE
GREATEST DEPTH OF SNOW OR ICE	3		SINES DEEP CREEK

"I certify that this is an official publication of the National Oceanic and Atmospheric Administration (NOAA) It is compiled using information from weather observing sites supervised by NOAA/National Weather Service and received at the National Climatic Data Center(NCDC), Asheville, North Carolina 28801."

Director
National Climatic Data Center

noaa

National
Oceanic and
Atmospheric Administration

National
Environmental Satellite, Data
and Information Service

National
Climatic Data Center
Asheville, North Carolina

DELAWARE

HIGHEST TEMPERATURE	65	DECEMBER 06	DOVER
LOWEST TEMPERATURE	20	DECEMBER 12+	2 STATIONS
GREATEST TOTAL PRECIPITATION	5.61		WILMINGTON PORTER RES
LEAST TOTAL PRECIPITATION	4.37		DOVER
GREATEST 1 DAY PRECIPITATION	2.54	DECEMBER 07	DOVER
GREATEST TOTAL SNOWFALL	0.1		2 STATIONS

MONTHLY STATION AND DIVISION SUMMARY

STATION	TEMPERATURE (°F)											PRECIPITATION (IN)												
	AVERAGE MAXIMUM	AVERAGE MINIMUM	AVERAGE	DEPARTURE FROM NORMAL	HIGHEST	DATE	LOWEST	DATE	HEATING DEG. DAYS	COOLING DEG. DAYS	NO. OF DAYS				TOTAL	DEPARTURE FROM NORMAL	GREATEST 24 HOURS	DATE	ICE PELLETS, SNOW			NO. OF DAYS		
											MAX		MIN						TOTAL	MAX DEPTH ON GROUND	DATE	.10 OR MORE	.50 OR MORE	1.00 OR MORE
											>=90	<=32	<=32	<=0										
WESTMINSTER	48.6	31.6	40.1	3.9	62	06	20	13+	763	0	0	0	19	0	3.34	0.13	1.30	08	0.0	0		4	3	1
--DIVISIONAL DATA----->			40.0	4.2											3.91	0.41								
APPALACHIAN MOUNTAIN 07																								
CUMBERLAND 2	47.5	28.6	38.1	3.9	64	16	18	12	828	0	0	0	23	0	2.89	0.28	1.09	08	0.0			4	3	1
FROSTBURG 2	41.1	27.1	34.1	4.6	60	06	13	12	950	0	0	5	25	0	3.14	-0.02	1.16	08	M 3.3	M 1	30	4	3	1
SHARPSBURG 5 S	M	M	M												M				M 0.0					
WILLIAMSPORT	48.9M	29.5M	39.2M		62	16	20	13+	793E	0	0	0	17	0	M 3.53		1.38	08	M 0.0	0		6	3	1
--DIVISIONAL DATA----->			37.1	3.6											3.19	0.32								
ALLEGHENY PLATEAU 08																								
OAKLAND 1 SE	43.1	24.5	33.8	2.5	64	05	8	11	963	0	0	7	25	0	3.16	-0.51	0.73	31	9.4	1	28	9	2	0
SAVAGE RIVER DAM	43.1	27.6	35.4	4.4	61	06	15	12+	913	0	0	1	23	0	3.00	0.26	1.06	08	0.0			5	3	1
SINES DEEP CREEK	41.0	23.9	32.5		61	06	11	12+	1002	0	0	6	26	0	4.39		1.16	08	M 6.1	M 3	29	8	3	2
--DIVISIONAL DATA----->			33.9	3.5											3.52	-0.06								
DELAWARE NORTHERN 01																								
BEAR 2 SW	51.0	31.1	41.1		63	22	20	12	735	0	0	0	21	0	4.48		2.20	07	0.1	0		5	3	1
WILMINGTON NEW CASTLE CO AP	50.8	31.9	41.4	5.0	62	22+	20	12	728	0	0	0	20	0	4.44	1.04	1.94	07	0.1	0		5	3	2
WILMINGTON PORTER RES	50.5	32.5	41.5		60	21	25	29	723	0	0	0	15	0	5.61		2.38	27	0.0			6	3	3
--DIVISIONAL DATA----->			41.3	4.7											4.84	1.22								
SOUTHERN 02																								
DOVER	55.3	34.6	45.0	5.1	65	06	22	12	614	0	0	0	18	0	4.37	0.87	2.54	07	0.0			6	3	1
LEWES	M	M	M												M				0.0					
--DIVISIONAL DATA----->			45.0	6.0											4.37	0.83								

MARYLAND AND DELAWARE
201112

DAILY PRECIPITATION (INCHES)

STATION	TOTAL	DAY OF MONTH																																
		01	02	03	04	05	06	07	08	09	10	11	12	13	14	15	16	17	18	19	20	21	22	23	24	25	26	27	28	29	30	31		
MARYLAND																																		
SOUTHERN																																		
EASTERN SHORE 01																																		
ASSATEAGUE	1.18							0.07	0.01		0.01					0.18	0.01					0.32	0.01	0.01						0.43			0.13	
PRINCESS ANNE	M			-	-						0.49	-	-									-	-	-	-	-	-	-	-	-	-	-	-	
SALISBURY 2N	M	-	-	-	-																													
SALISBURY FAA AP	1.69					T	0.01	0.39	0.01	T						0.05					T	0.49	0.22	0.01					0.51			T		
SNOW HILL 4 N	1.49										0.02						0.15					0.39	0.14	0.08				0.20	0.30			0.02		
CENTRAL																																		
EASTERN SHORE 02																																		
FEDERALSBURG R	M	-	-	-	-																													
ROYAL OAK 2 SSW	4.17						0.27	1.53	1.10						0.02			T		0.04	0.18		0.67	0.01				0.25	0.10					
LOWER SOUTHERN 03																																		
MECHANICSVILLE 5 NE	4.66							T	1.03	2.34						0.01	T			T	T	0.21	0.63						0.44	T		T		
SOLOMONS	2.69					0.01		0.27	1.13								0.05				0.02	0.01	0.18	0.48					0.54					
UPPER SOUTHERN 04																																		
BALTIMORE WASH INTL AP	4.50						0.25	2.38							0.01						T	0.09	0.58	0.47	T			0.72				T		
BELTSVILLE R	4.75						0.03	1.09	2.02							0.02							0.09	0.83	0.01		0.01		0.65					
DALECARLIA RSVR	4.46							1.15	1.67														0.10	0.87	0.02				0.65					
LAUREL 3 W	3.87						0.30	2.00							0.42								0.12	0.16				0.86				0.01		
MARYLAND SCIENCE CENTER	4.39						0.24	2.38														0.06	0.70	0.29				0.72						
NATL ARBORETUM DC	M 4.84	-					0.01	1.42	1.84							T							0.07	0.85	T				0.65					
OXON HILL	5.23						T	1.40	2.31							0.01							0.12	0.75	0.01				0.63		T	T		
UPPER MARLBORO 3 NNW	5.01						0.02	1.56	2.02														0.14	0.70					0.56		0.01			
NORTHERN CENTRAL 06																																		
ABERDEEN PHILLIPS FLD R	4.36						0.06	0.31	1.82							0.03							0.06	1.23				0.02	0.83					
BRIGHTON DAM	4.30						0.15	1.25	0.90							0.10							0.10	0.05	1.15		0.55	0.02	0.83					
CATOCTIN MTN PARK	3.50						0.16	0.71	0.75	0.30	0.06	0.02				0.03	0.05		0.03			0.06	0.01	0.55			0.76		0.01					
CONOWINGO DAM	4.58							0.21	1.98								0.05							1.25					1.09					
CYLBURN	4.52						0.05	0.38	2.02							0.01								*	1.17 _a				0.89			T		
DAMASCUS 3 SSW	4.22						0.32	1.66	0.05						0.01		T	T				0.15	0.20	1.07	0.02			0.68	T	0.03		0.03		
EMMITSBURG 2 SE	3.54						0.02	0.16	1.51							0.06							T	0.07	0.74				0.98		T	T		
FREDERICK 2 NNE	3.41						0.11	0.31	1.23							0.04							0.12	0.83					0.72		0.02	0.03		
MILLERS 4 NE R	3.72						0.21	0.77	0.78						0.03	T	T	0.04	T	0.02		0.07	0.94				0.82	0.01	0.03	T				
SMITHSBURG 2NW	3.54						0.02	0.27	1.57							0.10							0.05	0.08	0.75				0.70					
WESTMINSTER	3.34						0.07	0.29	1.30							0.02								0.06	0.94				0.66					
APPALACHIAN																																		
MOUNTAIN 07																																		
CUMBERLAND 2	2.89						0.04	0.58	1.09							0.01				0.01				0.45				0.68	0.02	T				
FROSTBURG 2	3.14	0.01					0.04	0.65	1.16						T	0.03		0.03		0.03	0.01	T	0.38	0.02				0.73		0.02	0.03			
SHARPSBURG 5 S	M						0.05	-	-	-	-	-	-	-	-	-	-	-	-	-	-	-	-	-	-	-	-	-	-	-	-	-	-	
WILLIAMSPORT	M 3.53	0.03					0.03	0.18	1.38														0.08	0.70					0.65	0.24	0.24			

DAILY PRECIPITATION (INCHES)

STATION	TOTAL	DAY OF MONTH																																		
		01	02	03	04	05	06	07	08	09	10	11	12	13	14	15	16	17	18	19	20	21	22	23	24	25	26	27	28	29	30	31				
ALLEGHENY PLATEAU 08																																				
OAKLAND 1 SE	3.16						0.15	0.72	0.10							0.05	0.40		0.10	0.10	0.15	0.01	0.07	0.43	0.05				0.05	0.05				0.73		
SAVAGE RIVER DAM	3.00						0.02	0.82	1.06							T	0.10		T	T	T	T	T	0.37	0.03				0.60	T	T		T	0.73		
SINES DEEP CREEK	4.39	0.07					0.15	0.78	1.16							0.03	0.42		0.05	0.02	0.10		0.10	0.33	0.07				1.03					0.08		
DELAWARE																																				
NORTHERN 01																																				
BEAR 2 SW	4.48						0.12	2.20	0.05							0.03		T	0.01		0.01	0.04	0.46	0.91					0.65					T		
NEWARK UNIV FARM R	M	-	-	-	-	-	-	-	-	-	-	-	-	-	-	-	-	-	-	-	-	-	-	-	-	-	-	-	-	-	-	-	-	-	-	
WILMINGTON NEW CASTLE CO AP	4.44						0.14	1.94	0.08						T	0.03			T	T	0.04	0.08	0.32	1.08					0.73							
WILMINGTON PORTER RES	5.61						0.09	1.28	0.10												0.10	0.06	0.10	1.50					2.38							
SOUTHERN 02																																				
DOVER	4.37						0.20	2.54	0.07	0.03											0.02	0.29	0.55	0.14					0.53							
LEWES	M	-	-	-	-	-	-	-	-	-	-	-	-	-	-	-	-	-	-	-	-	-	-	-	-	-	-	-	-	-	-	-	-	-	-	

DAILY TEMPERATURES (°F)

STATION	OB. TIME	MAX/MIN	DAY OF MONTH																															AVERAGE			
			01	02	03	04	05	06	07	08	09	10	11	12	13	14	15	16	17	18	19	20	21	22	23	24	25	26	27	28	29	30	31				
CATOCTIN MTN PARK	07	MAX	45	50	43	51	58	56	57	42	45	39	38	39	43	45	51	56	35	34	45	48	53	56	49	39	46	41	43	43	43	43	32	51	50	45.9	
		MIN	30	31	26	35	42	53	42	26	26	31	18	22	28	35	39	35	29	25	26	41	40	43	37	31	28	35	28	28	24	31	39	32.4			
CONOWINGO DAM	07	MAX	51	52	56	47	56	55	58	57	50	55	45	44	43	47	49	55	54	55	40	45	45	48	61	50	44	48	46	55	46	37	50	49.8			
		MIN	35	27	26	27	34	29	45	33	26	26	22	22	22	23	32	44	35	30	22	22	40	38	40	36	22	23	32	31	22	23	26	29.5			
CYLBURN	08	MAX	46	51	55	51	53	55	61	57	42	49	42	39	42	47	48	60	44	39	42	50	50	60	59	48	43	45	46	52	43	37	48	48.5			
		MIN	33	27	29	30	37	50	55	32	27	30	22	22	23	24	37	43	33	28	25	42	42	45	46	35	29	38	32	38	25	26	30	33.4			
DAMASCUS 3 SSW	22	MAX	46	53	46	52	58	60	60	40	48	41	38	42	46	47	59	59	37	38	47	58	58	57	47	41	44	44	43	36	54	54	48.3				
		MIN	29	31	31	32	43	53	35	31	30	29	22	24	27	37	42	37	28	27	28	46	47	46	39	32	29	38	33	29	26	33	40	34.0			
EMMITSBURG 2 SE	07	MAX	47	49	55	46	54	56	60	55	42	48	42	38	41	49	47	58	43	40	40	51	49	58	60	48	42	48	46	43	41	34	52	47.8			
		MIN	34	25	24	24	33	34	55	32	25	24	20	19	19	20	33	40	33	29	24	25	38	39	42	34	24	25	28	33	23	25	25	29.3			
FREDERICK 2 NNE	07	MAX	48	50	56	56	56	59	61	55	43	51	43	40	43	49	48	63	43	39	42	51	51	58	60	50	43	47	47	45	42	35	55	49.3			
		MIN	35	26	26	26	33	37	55	33	27	27	22	21	21	22	34	41	33	29	21	27	40	41	42	38	25	24	31	37	28	27	29	30.9			
MILLERS 4 NE	18	MAX	49	54	48	55	60	59	60	43	48	42	40	42	47	49	53	57	37	36	49	48	57	59	49	41	48	46	47	45	33	56	55	48.8			
		MIN	33	26	26	33	39	50	43	31	26	31	19	20	22	32	40	37	32	26	24	42	39	42	38	31	25	34	28	30	21	28	40	31.9			
SMITHSBURG 2NW	08	MAX	57	45	50	45	51	60	60	53	51	45	38	35	39	43	49	59	39	36	37	50	47	58	55	45	41	40	42	41	39	39	53	46.5			
		MIN	26	23	22	25	36	38	51	51	30	28	17	17	18	19	33	37	33	25	25	27	37	38	38	32	23	28	28	35	20	20	26	29.2			
WESTMINSTER	07	MAX	46	49	56	48	54	62	61	56	42	51	42	40	44	48	50	59	42	38	37	50	48	59	59	48	41	51	47	46	41	35	57	48.6			
		MIN	33	27	27	27	35	41	56	32	28	32	21	20	20	23	36	41	34	27	26	31	42	44	45	35	27	28	31	36	22	25	29	31.6			
APPALACHIAN MOUNTAIN 07																																					
CUMBERLAND 2	18	MAX	43	52	56	49	55	60	56	46	39	48	41	42	40	53	47	64	41	38	37	52	48	59	59	42	41	53	47	44	37	41	43	47.5			
		MIN	29	25	26	26	27	35	46	30	23	23	19	18	19	20	35	35	34	30	22	22	42	42	42	32	22	22	32	32	25	25	27	28.6			
FROSTBURG 2	07	MAX	34	44	47	41	46	60	55	42	28	38	31	34	36	44	44	58	33	29	30	46	44	56	51	36	34	43	38	40	30	38	43	41.1			
		MIN	27	27	23	23	27	40	42	23	22	21	14	13	17	28	35	31	27	24	22	30	38	40	35	27	24	28	29	30	21	22	31	27.1			
SHARPSBURG 5 S	07	MAX	47	50	55	48	56	63																												M	
		MIN	26	23	23	24	36	36																												M	
WILLIAMSPORT	06	MAX	45	51	57	48	56	57	59	53	43	50		41	42	50	47	62		39		49	49	60	49	43	54	48	45	41	36	45	48.9				
		MIN	33	26	25	26	28	28	49	33	25	25		20	20	21	34	36		28		39	39	38	38	25	24	29	34	24	23	27	29.5				
ALLEGHENY PLATEAU 08																																					
OAKLAND 1 SE	07	MAX	31	43	47	47	64	62	57	44	31	38	31	37	43	45	54	57	30	27	30	43	47	57	50	37	34	43	39	48	29	40	51	43.1			
		MIN	27	18	18	19	25	32	43	22	11	12	8	9	10	15	33	30	23	23	17	30	39	43	36	27	22	29	27	28	23	26	33	24.5			
SAVAGE RIVER DAM	08	MAX	37	44	48	43	48	61	54	44	33	40	34	33	36	44	43	58	36	32	34	48	47	60	54	39	37	45	39	44	35	41	45	43.1			
		MIN	31	25	23	23	27	33	44	28	21	21	15	15	16	22	33	36	31	29	22	24	39	42	39	31	24	25	29	33	24	25	27	27.6			
SINES DEEP CREEK	07	MAX	47	39	43	45	55	61	54	41	28	34	30	32	37	41	41	54	33	28	30	43	42	55	50	36	39	40	36	41	31	38	46	41.0			
		MIN	27	21	21	21	26	31	41	24	17	17	11	11	12	12	13	33	28	24	18	19	35	39	36	28	23	24	28	30	20	23	28	23.9			
DELAWARE NORTHERN 01																																					
BEAR 2 SW	24	MAX	51	54	48	57	58	62	61	45	51	45	42	44	49	51	61	58	42	38	48	48	62	63	52	42	47	48	58	46	38	52	59	51.0			
		MIN	31	26	27	28	38	58	38	30	26	28	22	20	22	29	46	41	28	24	22	41	40	49	33	26	23	28	28	29	21	27	36	31.1			
WILMINGTON NEW CASTLE CO AP	24	MAX	51	54	48	55	58	62	61	45	51	46	42	46	50	50	61	56	42	37	49	48	62	62	52	41	48	48	55	46	38	50	60	50.8			
		MIN	34	28	28	28	42	53	38	32	27	26	23	20	22	32	46	40	28	26	25	40	39	48	34	30	24	30	29	27	23	28	38	31.9			

DAILY TEMPERATURES (°F)

STATION	OB. TIME	MAX/MIN	DAY OF MONTH																															AVERAGE	
			01	02	03	04	05	06	07	08	09	10	11	12	13	14	15	16	17	18	19	20	21	22	23	24	25	26	27	28	29	30	31		
WILMINGTON PORTER RES	24	MAX MIN	49 34	51 33	45 33	53 33	55 33	59 33	59 37	42 32	49 30	40 30	38 26	42 26	46 29	48 36	58 44	56 39	39 30	40 27	47 27	48 27	60 41	59 47	59 37	59 29	59 27	59 27	54 33	46 28	45 25	45 35	56 41	50.5 32.5	
SOUTHERN 02	16	MAX MIN	51 37	56 32	55 30	56 31	61 42	65 58	62 41	60 32	53 30	51 31	47 25	46 22	49 28	51 32	62 46	61 42	59 32	43 26	50 26	53 40	62 46	61 47	62 37	60 29	49 29	49 32	60 33	58 32	48 26	53 33	60 45	55.3 34.6	
DOVER	08	MAX MIN																																	M M
LEWES																																			

SNOWFALL AND SNOW ON GROUND (INCHES)

STATION		DAY OF MONTH																															
		01	02	03	04	05	06	07	08	09	10	11	12	13	14	15	16	17	18	19	20	21	22	23	24	25	26	27	28	29	30	31	
MARYLAND																																	
SOUTHERN																																	
EASTERN SHORE 01																																	
ASSATEAGUE	SNOWFALL																																
PRINCESS ANNE	SNOWFALL																																
SALISBURY 2N	SNOWFALL																																
SALISBURY FAA AP	SNOWFALL																																
SNOW HILL 4 N	SNOWFALL																																
CENTRAL																																	
EASTERN SHORE 02																																	
ROYAL OAK 2 SSW	SNOWFALL																																
UPPER SOUTHERN 04																																	
BALTIMORE WASH INTL AP	SNOWFALL																																
	SN ON GND																																
BELTSVILLE R	SNOWFALL																																
	SN ON GND																																
DALECARLIA RSVR	SNOWFALL																																
	SN ON GND																																
	WTR EQUIV																																
LAUREL 3 W	SNOWFALL																																
	SN ON GND																																
MARYLAND SCIENCE CENTER	SNOWFALL																																
NATL ARBORETUM DC	SNOWFALL	-		-																													
OXON HILL	SNOWFALL																																
	SN ON GND																																
UPPER MARLBORO 3 NNW	SNOWFALL																																
	SN ON GND																																
NORTHERN CENTRAL 06																																	
CATOCTIN MTN PARK	SNOWFALL	-	-	-	-	-	-	-																									
CONOWINGO DAM	SNOWFALL																																
CYLBURN	SNOWFALL																																
DAMASCUS 3 SSW	SNOWFALL	-	-	-	-	-	-																										
	SN ON GND	-	-	-	-	-	-																										
EMMITSBURG 2 SE	SNOWFALL																																
	SN ON GND																																
	WTR EQUIV																																
FREDERICK 2 NNE	SNOWFALL																																
	SN ON GND																																
MILLERS 4 NE R	SNOWFALL																																
	SN ON GND																																
	WTR EQUIV																																
SMITHSBURG 2NW	SNOWFALL																																

Snowfall: Includes snow and ice. Values for NWS stations (J index note) are Mid-Mid (LST).

Snow on ground: Includes snow, sleet, ice, and hail. Values for NWS stations (J index note) are observed at 12 UTC (GMT).

Water Equivalent: Given for NWS stations (J index note) only, when snow depth is 2 inches or more, and is measured at 18 UTC (GMT)

SNOWFALL AND SNOW ON GROUND (INCHES)

STATION		DAY OF MONTH																														
		01	02	03	04	05	06	07	08	09	10	11	12	13	14	15	16	17	18	19	20	21	22	23	24	25	26	27	28	29	30	31
WESTMINSTER	SN ON GND																															
	SNOWFALL																															
	SN ON GND																															
APPALACHIAN MOUNTAIN 07																																
FROSTBURG 2	SNOWFALL	T	-	-	-	-	-	-	1.2	-	-	-	-	-	-	-	-	1.1	-	-	-	-	-	0.1	-	-	-	-	0.7	-	0.2	-
	SN ON GND	-	-	-	-	-	-	-	1	1	T	T	T	T	-	-	-	1	1	-	-	-	-	T	-	-	-	-	1	1	1	-
SHARPSBURG 5 S	SNOWFALL																															
WILLIAMSPORT	SNOWFALL																															
	SN ON GND																															
	WTR EQUIV																															
ALLEGHENY PLATEAU 08																																
OAKLAND 1 SE	SNOWFALL								5.0									1.8	1.0					0.1					1.5			
	SN ON GND																	1										1				
SAVAGE RIVER DAM	SNOWFALL																															
SINES DEEP CREEK	SNOWFALL	1.0	-	-	-	-	-	-	3.0	-	-	-	-	-	-	-	-	1.0	0.2	-	-	-	-	0.4	-	-	-	0.5	-	-	-	
	SN ON GND	1	-	-	-	-	-	-	3	-	1	-	1	-	-	-	-	1	1	-	-	-	-	T	-	-	-	T	T	-	-	
DELAWARE NORTHERN 01																																
BEAR 2 SW	SNOWFALL																		0.1													
	SN ON GND																															
NEWARK UNIV FARM R	SNOWFALL																															
WILMINGTON NEW CASTLE CO AP	SNOWFALL																		0.1													
	SN ON GND																															
WILMINGTON PORTER RES	SNOWFALL																															

Snowfall: Includes snow and ice. Values for NWS stations (J index note) are Mid-Mid (LST).

Snow on ground: Includes snow, sleet, ice, and hail. Values for NWS stations (J index note) are observed at 12 UTC (GMT).

Water Equivalent: Given for NWS stations (J index note) only, when snow depth is 2 inches or more, and is measured at 18 UTC (GMT)

PAN EVAPORATION AND WIND

STATION		DAY OF MONTH																															TOTAL OR AVERAGE		
		01	02	03	04	05	06	07	08	09	10	11	12	13	14	15	16	17	18	19	20	21	22	23	24	25	26	27	28	29	30	31			
MARYLAND UPPER SOUTHERN 04 BELTSVILLE	WIND	-	-	-	-	-	-	-	-	-	-	-	-	-	-	-	-	-	-	-	-	-	-	-	-	-	-	-	-	-	-	-	-	-	M
	EVAP	-	-	-	-	-	-	-	-	-	-	-	-	-	-	-	-	-	-	-	-	-	-	-	-	-	-	-	-	-	-	-	-	-	M
	MAX	-	-	-	-	-	-	-	-	-	-	-	-	-	-	-	-	-	-	-	-	-	-	-	-	-	-	-	-	-	-	-	-	-	M
	MIN	-	-	-	-	-	-	-	-	-	-	-	-	-	-	-	-	-	-	-	-	-	-	-	-	-	-	-	-	-	-	-	-	-	M
UPPER MARLBORO 3 NNW	WIND	-	-	-	-	-	-	-	-	-	-	-	-	-	-	-	-	-	-	-	-	-	-	-	-	-	-	-	-	-	-	-	-	-	M
	EVAP	-	-	-	-	-	-	-	-	-	-	-	-	-	-	-	-	-	-	-	-	-	-	-	-	-	-	-	-	-	-	-	-	-	M
	MAX	-	-	-	-	-	-	-	-	-	-	-	-	-	-	-	-	-	-	-	-	-	-	-	-	-	-	-	-	-	-	-	-	-	M
	MIN	-	-	-	-	-	-	-	-	-	-	-	-	-	-	-	-	-	-	-	-	-	-	-	-	-	-	-	-	-	-	-	-	-	M
ALLEGHENY PLATEAU 08 SAVAGE RIVER DAM	WIND	-	-	-	-	-	-	-	-	-	-	-	-	-	-	-	-	-	-	-	-	-	-	-	-	-	-	-	-	-	-	-	-	-	M
	EVAP	-	-	-	-	-	-	-	-	-	-	-	-	-	-	-	-	-	-	-	-	-	-	-	-	-	-	-	-	-	-	-	-	-	M
	MAX	-	-	-	-	-	-	-	-	-	-	-	-	-	-	-	-	-	-	-	-	-	-	-	-	-	-	-	-	-	-	-	-	-	M
	MIN	-	-	-	-	-	-	-	-	-	-	-	-	-	-	-	-	-	-	-	-	-	-	-	-	-	-	-	-	-	-	-	-	-	M

Evaporation: Is measured in hundreths of inches.

Wind: Is measured in miles.

Max and Min: The maximum and minimum temperatures (Fahrenheit) of the water in the evaporation pan.

STATION INDEX

STATION	INDEX NO.	DIVISION	COUNTY	LATITUDE	LONGITUDE	ELEVATION (IN FEET)	OBSERVATION TIME AND TABLES			
							LOCAL STD TIME			
							TEMP	PRECIP	EVAP	SPECIAL SEE (NOTES)
MARYLAND										
ABERDEEN PHILLIPS FLD R	0015	06	HARFORD	39 28	76 10W	57	07	07		CH
ASSATEAGUE	0335	01	WORCESTER	38 4	75 13W	10	24	24		H
BALTIMORE WASH INTL AP R	0465	04	ANNE ARUNDEL	39 10	76 41W	156	24	24		CHJ
BELTSVILLE R	0700	04	PRINCE GEORGE'S	39 2	76 56W	145	08	08	08	CH
BRIGHTON DAM	1125	06	MONTGOMERY	39 11	77 0W	330		07		H
CATOCTIN MTN PARK	1530	06	FREDERICK	39 39	77 29W	1610	07	07		H
CONOWINGO DAM	2060	06	HARFORD	39 39	76 11W	40	07	07		H
CUMBERLAND 2	2282	07	ALLEGANY	39 39	78 45W	730	18	18		H
CYLBURN	2308	06	BALTIMORE	39 21	76 39W	235	08	08		H
DALECARLIA RSVR	2325	04	PRINCE GEORGE'S	38 56	77 6W	150	08	08		H
DAMASCUS 3 SSW	2336	06	MONTGOMERY	39 15	77 13W	700	22	22		H
EMMITSBURG 2 SE	2906	06	FREDERICK	39 41	77 17W	403	07	07		H
FREDERICK 2 NNE	3353	06	FREDERICK	39 26	77 24W	280	07	07		H
FROSTBURG 2	3415	07	ALLEGANY	39 40	78 56W	2170	07	07		H
LAUREL 3 W	5111	04	PRINCE GEORGE'S	39 5	76 54W	400	24	24		H
MARYLAND SCIENCE CENTER R	5718	04	BALTIMORE (CITY)	39 17	76 37W	20	24	24		CH
MECHANICSVILLE 5 NE	5865	03	ST. MARY'S	38 28	76 42W	100	07	07		H
MILLERS 4 NE R	5934	06	CARROLL	39 43	76 48W	860	18	18		CH
NATL ARBORETUM DC	6350	04	DISTRICT OF COLUMBIA	38 55	76 58W	50	07	07		H
OAKLAND 1 SE	6620	08	GARRETT	39 25	79 24W	2420	07	07		H
OXON HILL	6800	04	PRINCE GEORGE'S	38 47	76 60W	120	08	08		H
PRINCESS ANNE	7330	01	SOMERSET	38 13	75 41W	20	17	17		H
ROYAL OAK 2 SSW	7806	02	TALBOT	38 43	76 11W	10	17	17		H
SALISBURY 2N	8004	01	WICOMICO	38 24	75 36W	20	17	17		H
SALISBURY FAA AP	8005	01	WICOMICO	38 20	75 31W	48	24	24		H
SAVAGE RIVER DAM R	8065	08	GARRETT	39 31	79 8W	1495	08	08	08	CH
SHARPSBURG 5 S	8207	07	WASHINGTON	39 24	77 43W	500	07	07		H
SINES DEEP CREEK	8315	08	GARRETT	39 31	79 25W	2040	07	07		H
SMITHSBURG 2NW	8371	06	WASHINGTON	39 40	77 35W	670	08	08		H
SNOW HILL 4 N	8380	01	WORCESTER	38 14	75 23W	30	17	17		H
SOLOMONS	8405	03	CALVERT	38 19	76 27W	12	08	08		H
UPPER MARLBORO 3 NNW	9070	04	PRINCE GEORGE'S	38 51	76 46W	130	08	08	08	H
WESTMINSTER	9440	06	CARROLL	39 34	76 59W	750	07	07		H
WILLIAMSPORT	9570	07	WASHINGTON	39 36	77 50W	360	06	06		H
DELAWARE										
BEAR 2 SW	1200	01	NEW CASTLE	39 36	75 44W	80	24	24		H
DOVER	2730	02	KENT	39 15	75 31W	30	16	16		H
LEWES	5320	02	SUSSEX	38 47	75 8W	15	08	08		H
WILMINGTON NEW CASTLE CO AP R	9595	01	NEW CASTLE	39 40	75 36W	79	24	24		CHJ
WILMINGTON PORTER RES	9605	01	NEW CASTLE	39 46	75 32W	270	24	24		H

REFERENCE NOTES

STATION NAMES: Name of the city, town or locality. Figures and letters following the station names indicate the distance in miles and direction from the post office or town community center.

DIVISIONS: Areas within a state of similar climatological characteristics. Division averages are calculated using data from stations that record both temperature and precipitation (i.e. not precipitation alone).

NORMALS: The average value of the meteorological element over a time period. Effective 1 January 2002, the averaging period is 1971 to 2000. The normals for National Weather Service localities have been adjusted so as to be representative for the current observation site.

MONTHLY DEGREE DAY TOTALS: One heating (cooling) degree day is accumulated for each whole degree that the daily mean temperature is below (above) 65 degrees Fahrenheit.

PRECIPITATION: Values shown in hundredths of inches are water equivalent totals, i.e., total of liquid and melted frozen precipitation. In the "Monthly Summarized Data" table the total snow and sleet values shown in tenths of inches are unmelted amounts. The max depth on ground values of snow and sleet shown in whole inches are cumulative unmelted amounts. The number of days with .10, .50, 1.00 or more refers to water equivalents.

PRECIPITATION QUALITY CONTROL: The NCDC quality control process may flag precipitation data that are spatially inconsistent, exceed climatological limits, or are inconsistent with prevailing weather patterns.

TEMPERATURE: Original temperature values are given in the "Daily Temperature" table. Summary temperature information (averages, departures, extremes, monthly degree day totals) is based on the values labeled MAX/MIN.

WIND: (As shown in the "Evaporation and Wind" table) the total wind movement in miles over the evaporation pan as determined by an anemometer recorder located 6-8 inches above the pan.

SYMBOLS AND LETTERS USED IN THE STATION INDEX TABLE

- C Station is equipped with recording rain gage (R) but values in this bulletin are from a non-recording rain gage unless indicated by an R.
- G Observations appear in the "Soil Temperatures" table.
- H Observations appear in the "Snowfall and Snow on the Ground" table.
- J Station also published as a Local Climatological Data publication.
- VAR Observation time varies.
- SR Observation time near sunrise.
- SS Observation time near sunset.

SYMBOLS AND LETTERS USED IN THE DATA TABLES

(DAILY DATA ARE FOR THE 24 HOURS IMMEDIATELY PRECEDING OBSERVATION TIME.)

BLANK Entries in the "Monthly Summarized Data" table indicate no record.
BLANK Entries in the "Daily Precipitation" and "Snowfall and Snow on the Ground" tables indicate zero.
BLANK Entries in the "Daily Temperature" table indicate a missing record

- No record. Data not recorded or not received in time for publication.
- + Precipitation or temperature extremes occurred on one or more previous dates during the month.

* Rain gage not read. Precipitation is included in the amount following the asterisks. Time distribution may not be known. A * preceding the monthly total indicates precipitation amount is being carried forward to next month's total, and may include amounts from the previous month(s).

a As a subscript, indicates accumulated total.

A Amount of precipitation is the total of observer's entries for the current month. It may include precipitation that occurred during the previous month. Refer to earlier bulletin to determine date of last reading. (Hawaii stations)

E Normalized HDD/CDD Calculation. E is appended to the HDD/CDD Calculation when 1-9 individual daily TMAX and/or TMIN values are missing and a Normalized HDD/CDD Calculation is provided. M appears alone if 10 or more daily values are missing.

F Monthly calculation flagged value. F is appended to average and/or total values computed which exclude one or more daily data values that have been flagged by the GHCN-Daily Dataset

M Insufficient or partial data. M is appended to average and/or total values computed with 1-9 daily values missing. M appears alone if 10 or more daily values are missing, (8 or more for wind and evaporation).

N Indicates snow fall or Snowdepth totals are computed with one or more missing days.

R Amounts from recording rain gage.

T Trace. An amount too small to measure.

SEASONAL TABLES: Monthly and seasonal snowfall and heating degree days for the 12 months ending with the June data are published in the July issue of this bulletin. Cooling degree days for the calendar year are published in the "Climatological Data Annual Summary."

Information concerning the history of changes in locations, exposure, etc. of substations is kept on file at the National Climatic Data Center. Historical information of regular National Weather Service Offices may be obtained from the "Local Climatological Data" annual publication. The contents of this publication may be reprinted or otherwise used freely, with proper credit to the National Climatic Data Center. The data are also available digitally.

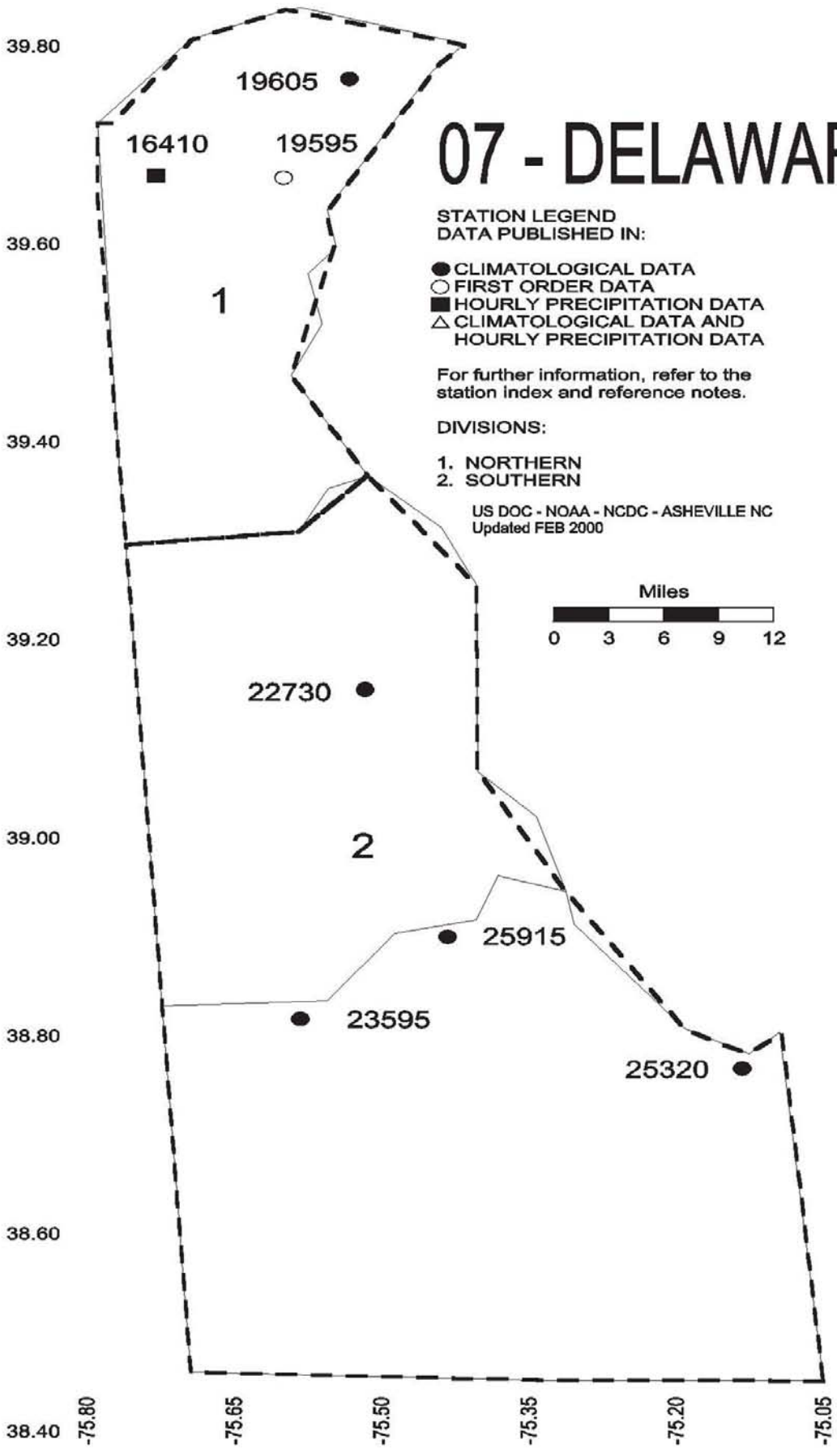
Effective with the January 2011 Data-Month, COOP Observer Names are no longer included in the Monthly and Annual Climatological Data Publications. This information is not published to ensure the privacy of personal information pursuant to Section 208 of the E-Government Act of 2002 (44 USC 3601).

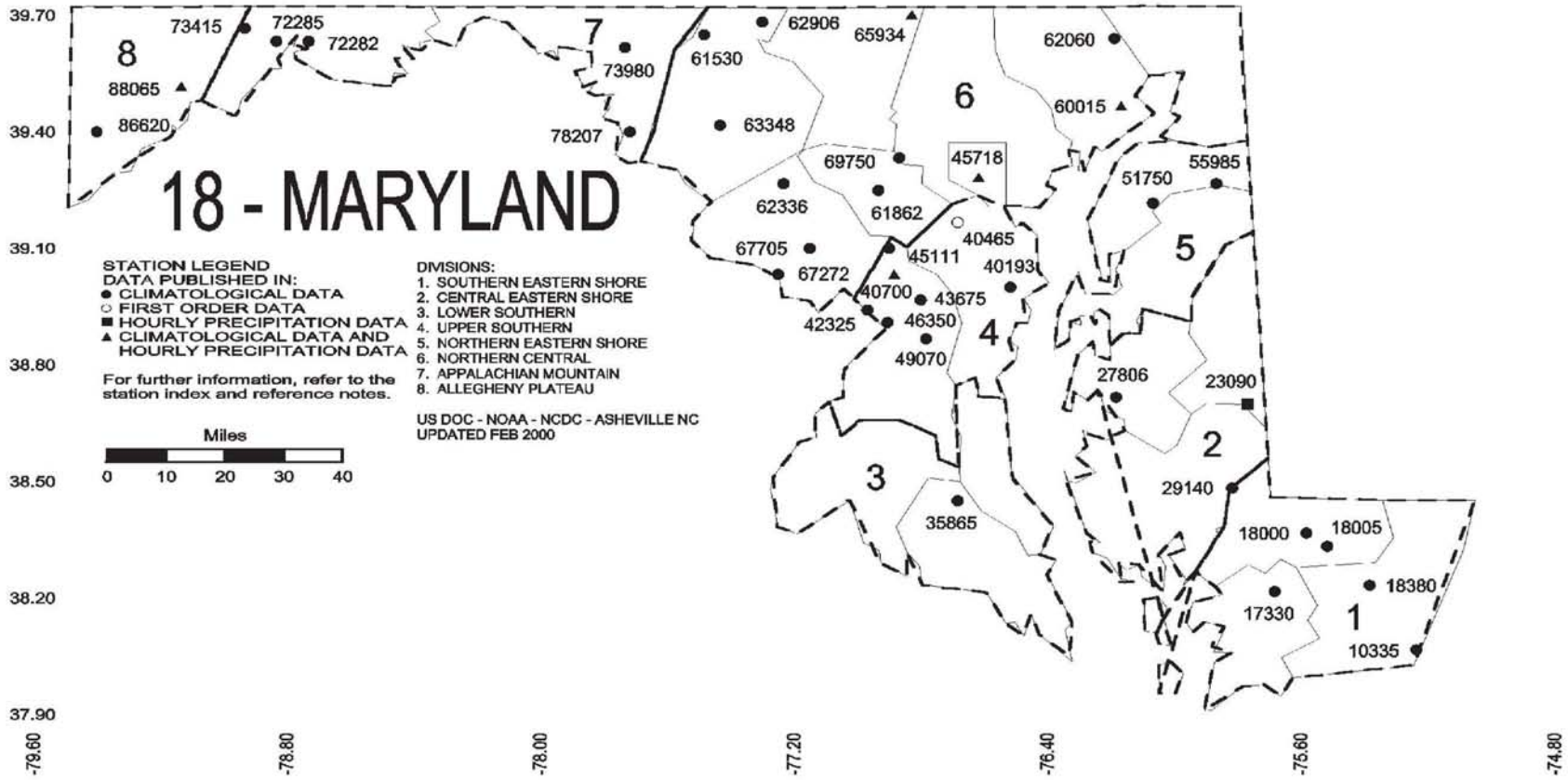
The GHCN-Daily Quality Control Flags shown below are displayed as superscripts with the data. For more Information on Global Historical Climatology Network - Daily and flags, see:
<http://www.ncdc.noaa.gov/oa/climate/ghcn-daily/>
and

Comprehensive Automated Quality Assurance of Daily Surface Observations.
Durre, Imke, Matthew J. Menne, Byron E. Gleason, Tamara G. Houston, Russell S. Vose, 2010: J. Appl. Meteor. Climatol., 49, 16151633.
doi: 10.1175/2010JAMC2375.1

Blank = Passed All checks	N = failed naught check
D = failed duplicate check	O = failed climatological outlier check
G = failed gap check	R = failed lagged range check
I = failed internal consistency check	S = failed spatial consistency check
K = failed streak/frequent-value check	T = failed temporal consistency check
L = failed check on length of multiday period	W = temperature too warm for snow
M = failed megaconsistency check	X = failed bounds check

07 - DELAWARE





NOAA\National Climatic Data Center
Attn: User Engagement & Services Branch
151 Patton Avenue
Asheville, NC 28801-5001

Customer Services Number: (828) 271-4800, option 2
TDD : (828) 271-4010
Fax number: (828) 271-4876

NCDC now offers free online access to the *Climatological Data* publication.
Go to : www.ncdc.noaa.gov and choose Most Popular.