



# CLIMATOLOGICAL DATA

## MARYLAND AND DELAWARE

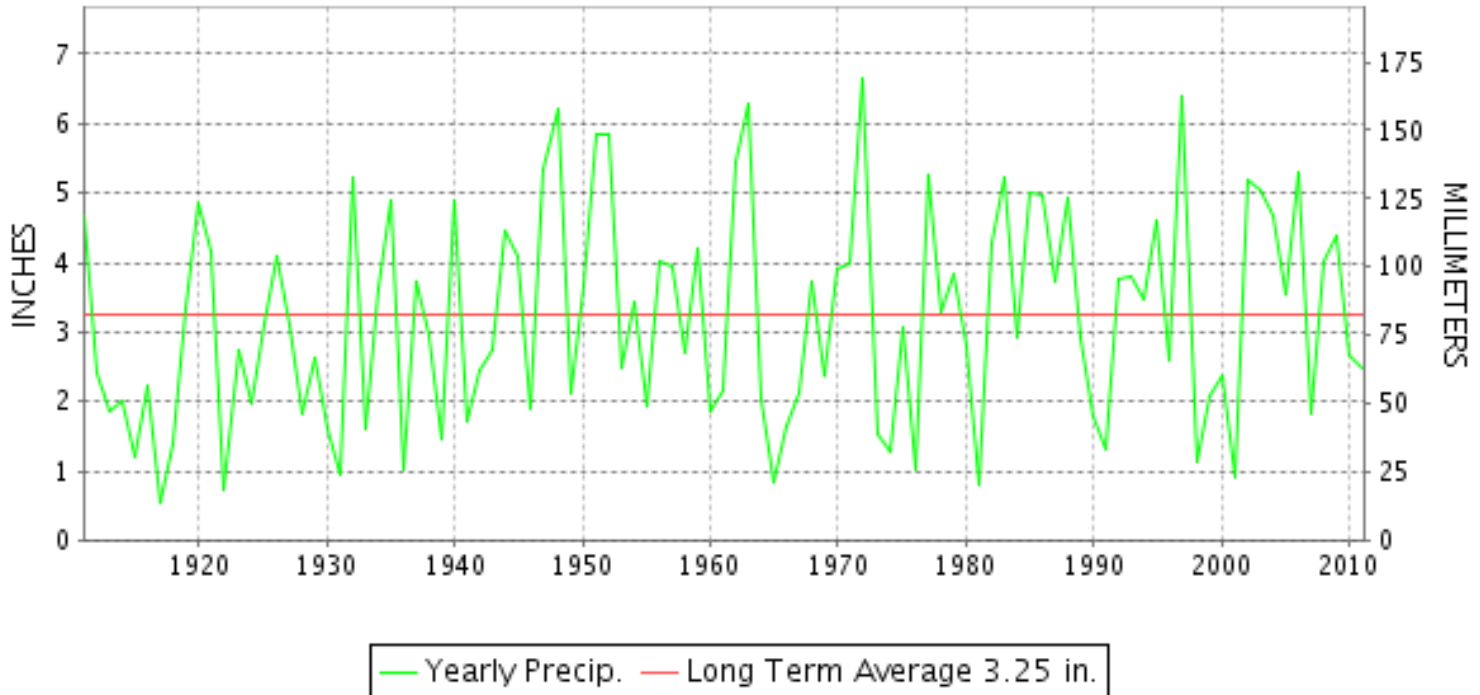
NOVEMBER 2011

VOLUME 115 NUMBER 11

ISSN 0145-0549

GHCND Ver: 2.92-upd-2012052114

### NOVEMBER PRECIPITATION BY YEAR



#### TEMPERATURE AND PRECIPITATION EXTREMES

##### MARYLAND

HIGHEST TEMPERATURE	79	NOVEMBER 15	CUMBERLAND 2
LOWEST TEMPERATURE	20	NOVEMBER 19	SINES DEEP CREEK
GREATEST TOTAL PRECIPITATION	5.23		MILLERS 4 NE
LEAST TOTAL PRECIPITATION	1.95		BELTSVILLE
GREATEST 1 DAY PRECIPITATION	2.79	NOVEMBER 23+	2 STATIONS
GREATEST TOTAL SNOWFALL	0.7		OAKLAND 1 SE
GREATEST DEPTH OF SNOW OR ICE	4		CATOCTIN MTN PARK

"I certify that this is an official publication of the National Oceanic and Atmospheric Administration (NOAA) It is compiled using information from weather observing sites supervised by NOAA/National Weather Service and received at the National Climatic Data Center(NCDC), Asheville, North Carolina 28801."

Director  
National Climatic Data Center

noaa

National  
Oceanic and  
Atmospheric Administration

National  
Environmental Satellite, Data  
and Information Service

National  
Climatic Data Center  
Asheville, North Carolina

**DELAWARE**

HIGHEST TEMPERATURE	74	NOVEMBER 08	WILMINGTON NEW CASTLE CO AP
LOWEST TEMPERATURE	25	NOVEMBER 19	BEAR 2 SW
GREATEST TOTAL PRECIPITATION	4.48		WILMINGTON PORTER RES
LEAST TOTAL PRECIPITATION	4.01		BEAR 2 SW
GREATEST 1 DAY PRECIPITATION	1.64	NOVEMBER 22	WILMINGTON NEW CASTLE CO AP



## MONTHLY STATION AND DIVISION SUMMARY

STATION	TEMPERATURE (°F)											PRECIPITATION (IN)												
	AVERAGE MAXIMUM	AVERAGE MINIMUM	AVERAGE	DEPARTURE FROM NORMAL	HIGHEST	DATE	LOWEST	DATE	HEATING DEG. DAYS	COOLING DEG. DAYS	NO. OF DAYS				TOTAL	DEPARTURE FROM NORMAL	GREATEST 24 HOURS	DATE	ICE PELLETS, SNOW			NO. OF DAYS		
											MAX		MIN						TOTAL	MAX DEPTH ON GROUND	DATE	.10 OR MORE	.50 OR MORE	1.00 OR MORE
											>=90	<=32	<=32	<=0										
WESTMINSTER --DIVISIONAL DATA-----> APPALACHIAN MOUNTAIN 07	58.9	37.6	48.3	2.7	72	09	28	07	492	0	0	0	9	0	5.00	1.76	2.79	23	0.0	0		7	3	1
			48.3	3.4										4.32	0.70									
CUMBERLAND 2	60.3	34.9	47.6	4.0	79	15	25	19	513	0	0	0	12	0	3.09	0.18	1.01	23	0.0			7	2	1
FROSTBURG 2	54.0	35.0	44.5	5.4	72	15	22	19+	606	0	0	0	13	0	3.28	-0.48	1.10	23	M 0.4	M 1	11	6	3	1
SHARPSBURG 5 S	59.5	33.9	46.7		72	15	23	19+	540	0	0	0	19	0	3.82		1.65	23	M 0.0	M T	01	6	3	1
WILLIAMSPORT	58.8M	34.9M	46.9M		70	09	25	20+	501	0	0	0	16	0	M 4.05		1.75	23	M 0.0	0		6	3	1
--DIVISIONAL DATA-----> ALLEGHENY PLATEAU 08			46.4	3.7										3.56	0.29									
OAKLAND 1 SE	55.5	31.4	43.5	3.5	71	15+	21	18	639	0	0	0	23	0	3.99	0.31	1.38	23	0.7	0		8	3	1
SAVAGE RIVER DAM	54.6	33.9	44.3	3.9	72	15	24	19	614	0	0	0	14	0	3.39	0.39	1.15	23	0.0			6	4	1
SINES DEEP CREEK	53.7M	31.2M	42.5M		70	15	20	19	648	0	0	0	22	0	M 4.44		1.34	23	M 0.3	M T	18	8	2	1
--DIVISIONAL DATA----->  DELAWARE NORTHERN 01			43.4	3.8										3.94	0.38									
BEAR 2 SW	59.6	38.5	49.1		71	14	25	19	471	0	0	0	7	0	4.01		1.54	22	0.0	0		5	3	2
WILMINGTON NEW CASTLE CO AP	59.8	39.3	49.6	3.7	74	08	28	19+	457	0	0	0	6	0	4.13	0.94	1.64	22	0.0	0		6	3	2
WILMINGTON PORTER RES	57.6	41.6	49.6		67	29+	32	19	454	0	0	0	1	0	4.48		1.45	22	0.0			6	4	2
--DIVISIONAL DATA-----> SOUTHERN 02			49.4	3.6										4.21	0.83									
DOVER	62.4	41.4	51.9	2.7	72	14	29	19	383	0	0	0	4	0	F 0.55		0.55	29	0.0			1	1	0
LEWES	M	M	M											M					0.0					
--DIVISIONAL DATA----->			51.9	4.2										0.55	-2.74									

DAILY PRECIPITATION (INCHES)

STATION	TOTAL	DAY OF MONTH																																	
		01	02	03	04	05	06	07	08	09	10	11	12	13	14	15	16	17	18	19	20	21	22	23	24	25	26	27	28	29	30	31			
<b>MARYLAND</b>																																			
<b>SOUTHERN</b>																																			
<b>EASTERN SHORE 01</b>																																			
ASSATEAGUE	2.43	0.16		0.01						0.03						0.61	0.66				0.01		0.30							0.04	0.61				
PRINCESS ANNE	M				-	-					0.09	-	-			0.60	0.28		-	-		0.05	0.43	-	-	-	-	-	0.00 <sup>L</sup>	0.74 <sup>L</sup>					
SALISBURY 2N	M	-	-	-	-	-	-	-	-	-	-	-	-	-	-	-	-	-	-	-	-	-	-	-	-	-	-	-	-	-	-	-	-		
SALISBURY FAA AP	2.31	0.10		0.01						0.03						0.55	0.28				0.08	0.02	0.64						0.01	0.59					
SNOW HILL 4 N	2.33	0.24		0.01						0.02	0.01					0.03	0.89				0.08	0.03	0.47	0.01						0.27	0.27				
<b>CENTRAL</b>																																			
<b>EASTERN SHORE 02</b>																																			
FEDERALSBURG R	M	-	-	-	-	-	-	-	-	-	-	-	-	-	-	-	-	-	-	-	-	-	-	-	-	-	-	-	-	-	-	-	-		
ROYAL OAK 2 SSW	3.95	0.52									0.06				T	0.77	0.89					0.09		1.11	0.01					0.40	0.10				
<b>LOWER SOUTHERN 03</b>																																			
MECHANICSVILLE 5 NE	3.74	0.24			T						0.03					T	1.42	0.11				0.06	0.27	1.15	0.01					T	0.45				
SOLOMONS	3.30	0.10		0.02						0.03	T					0.22	1.13	0.26				0.05	0.19	0.74						0.37	0.19				
<b>UPPER SOUTHERN 04</b>																																			
BALTIMORE WASH INTL AP R	2.45	0.07									0.05				0.01	0.37	T				0.06	0.15	1.17	0.16						0.41					
BELTSVILLE R	1.95								0.01		0.10					0.11	0.21					0.18	0.14	0.78						0.04	0.38				
DALECARLIA RSVR	2.05										0.08					0.10	0.32						0.30	0.73	0.03					0.01	0.48				
LAUREL 3 W	2.61										0.10					0.35	0.05				0.09	0.23	0.98	0.26						0.54	0.01				
MARYLAND SCIENCE CENTER R	3.09									0.05						0.31					0.04	0.16	1.73	0.38						0.42					
NATL ARBORETUM DC	M 2.31	0.30									-					0.11	0.44	T				0.10	0.12	0.75	T				0.03	0.46					
OXON HILL	2.38										0.05					0.11	0.64	T				0.08	0.22	0.69	0.02					0.02	0.55				
UPPER MARLBORO 3 NNW	2.34										0.11					*	*	0.70 <sub>a</sub>				0.09	0.16	0.77	0.03					0.06	0.42				
<b>NORTHERN CENTRAL 06</b>																																			
ABERDEEN PHILLIPS FLD	3.93	0.13	0.01								0.13					0.22	0.32	T				0.24	0.13	1.90						0.11	0.74				
BRIGHTON DAM	M 3.10										0.15					0.45	0.10					0.15	0.90	0.70	-					0.65					
CATOCTIN MTN PARK	F 3.78								0.00 <sup>L</sup>	0.00 <sup>L</sup>	0.10 <sup>L</sup>	0.00 <sup>L</sup>			0.04	0.58 <sup>L</sup>	0.12 <sup>L</sup>					0.42	1.09	1.47						0.71	0.05				
CONOWINGO DAM	4.94			0.01							0.12					0.32	0.47					0.32	0.20	2.60	0.04					0.09	0.77				
CYLBURN	M 3.76										0.05					0.20	0.28					-	0.33	2.38	0.04					0.09	0.39				
DAMASCUS 3 SSW	3.73										0.11					T	0.87	0.02			0.03	0.24	1.10	0.74						0.62					
EMMITSBURG 2 SE	4.90										0.14					T	0.20	0.68				0.38	0.25	2.79	0.04					0.02	0.40				
FREDERICK 2 NNE	M	-	-	-	-	-	-	-	-	-	-	-	-	-	-	-	-	-	-	-	-	-	-	-	-	-	-	-	-	-	-	-	-		
MILLERS 4 NE R	5.23										0.11					T	0.75	0.13				0.47	1.24	1.88						0.62	0.03				
SMITHSBURG 2NW	4.82															0.12	0.15	0.80				0.40	0.25	2.50						0.05	0.55				
WESTMINSTER	5.00										0.11					T	0.28	0.53				0.32	0.30	2.79	0.08					0.55	0.04				
<b>APPALACHIAN</b>																																			
<b>MOUNTAIN 07</b>																																			
CUMBERLAND 2	3.09										0.07	0.01				0.11	0.11	0.70				0.47	0.28	1.01						0.08	0.25				
FROSTBURG 2	3.28	T									0.01	0.01	T			0.07	0.14	0.55				0.37	0.34	1.10	0.01					T	0.68				
SHARPSBURG 5 S	3.82											0.08				0.02	0.39	0.54				0.32	0.16	1.65	0.02					0.02	0.62				
WILLIAMSPORT	M 4.05										-	-				0.08	0.10	0.75	0.03			0.40	0.25	1.75	0.03					0.03	0.63				

DAILY PRECIPITATION (INCHES)

STATION	TOTAL	DAY OF MONTH																															
		01	02	03	04	05	06	07	08	09	10	11	12	13	14	15	16	17	18	19	20	21	22	23	24	25	26	27	28	29	30	31	
<b>ALLEGHENY PLATEAU 08</b>																																	
OAKLAND 1 SE	3.99	0.12									0.05				0.38	0.30	0.57				0.09	0.59	0.20	1.38						0.03	0.28		
SAVAGE RIVER DAM	3.39										T				0.07	0.11	0.52					0.38	0.52	1.15						T	0.64		
SINES DEEP CREEK	M 4.44	0.03								0.06	0.09				0.40	0.33	0.58	0.02			0.03	0.49	0.47	1.34	0.21	-			0.02		0.37		
<b>DELAWARE</b>																																	
<b>NORTHERN 01</b>																																	
BEAR 2 SW	4.01									0.08						0.64	0.01				0.07	0.16	1.54	0.32					T	1.19			
NEWARK UNIV FARM R	M	-	-	-	-	-	-	-	-	-	-	-	-	-	-	-	-	-	-	-	-	-	-	-	-	-	-	-	-	-	-		
WILMINGTON NEW CASTLE CO AP R	4.13									0.08					T	0.62	0.01				0.10	0.12	1.64	0.48					0.03	1.05			
WILMINGTON PORTER RES	4.48							0.05		0.14						0.67	T				T	0.18	1.45	0.76					T	1.23			
<b>SOUTHERN 02</b>																																	
DOVER	F 0.55															0.00 <sup>L</sup>	1.36 <sup>L</sup> <sub>a</sub>					0.00 <sup>L</sup>	0.52 <sup>L</sup>	0.00 <sup>L</sup>	0.84 <sup>L</sup> <sub>a</sub>						0.55		
LEWES	M	-	-	-	-	-	-	-	-	-	-	-	-	-	-	-	-	-	-	-	-	-	-	-	-	-	-	-	-	-	-		



DAILY TEMPERATURES (°F)

STATION	OB. TIME	MAX/MIN	DAY OF MONTH																															AVERAGE
			01	02	03	04	05	06	07	08	09	10	11	12	13	14	15	16	17	18	19	20	21	22	23	24	25	26	27	28	29	30	31	
CATOCTIN MTN PARK	07	MAX	54	58	63	52	47	53	64	69	61	54	42	59	60	63	63	56	52	40	51	62	59	46	55	54	62	60	63	64	59	46		56.4
		MIN	32	36	41	43	30	33	38	47	44	42	33	32	41	48	55	52	36	26	29	42	43	42	35	45	49	45	54	46	36		40.6	
CONOWINGO DAM	07	MAX	54	59	60	61	57	56	58	62	69	60	57	49	60	61	71	63	57	50	50	54	62	55	58	58	59	65	54	65	66	61		59.0
		MIN	34	35	34	35	35	28	29	37	38	40	37	28	30	38	46	52	46	28	24	24	42	48	50	32	33	33	35	34	47	38		36.3
CYLBURN	08	MAX	56	56	58	62	53	52	61	64	66	66	59	51	59	66	71	63	55	44	43	61	64	53	58	57	63	67	65	66	64	64		59.6
		MIN	40	33	41	46	33	29	34	40	36	44	31	37	51	58	53	43	30	31	32	53	46	48	34	46	36	36	49	57	38		40.7	
DAMASCUS 3 SSW	22	MAX	55	58	61	52	49	55	62	68	62	51	44	59	60	69	65	56	50	41	51	58	52	56	56	55	65	66	67	68	61	46		57.3
		MIN	36	36	40	41	32	32	38	43	40	42	35	34	40	53	56	50	34	28	30	43	46	46	41	36	40	46	46	60	46	36		40.9
EMMITSBURG 2 SE	07	MAX	51	56	60	62	54	50	55	65	68	64	52	47	60	58	65	60	56	44	44	52	59	51	54	58	66	60	66	67	64		57.5	
		MIN	27	31	30	35	32	25	28	30	31	30	36	29	31	32	51	52	43	30	24	25	45	45	46	33	43	33	33	35	52	39		35.2
FREDERICK 2 NNE	07	MAX																																M
		MIN																																M
MILLERS 4 NE	18	MAX	56	60	63	57	51	55	66	71	63	51	45	60	59	69	65	57	53	42	52	59	55	51	59	57	64	64	66	69	63	47		58.3
		MIN	36	33	38	43	29	29	35	42	40	42	35	30	33	50	57	52	37	26	28	41	45	44	31	39	43	40	51	46	36		39.2	
SMITHSBURG 2NW	08	MAX	49	55	59	64	64	51	54	64	67	63	50	44	61	60	67	59	56	42	41	51	60	53	57	55	59	61	63	65	62		57.0	
		MIN	29	28	29	35	28	28	29	31	32	34	32	30	33	39	55	52	41	26	26	27	51	44	45	29	33	34	44	56	37		35.5	
WESTMINSTER	07	MAX	53	57	62	65	54	53	57	67	72	65	52	45	62	61	69	61	56	43	44	54	60	53	61	59	57	66	62	67	68	63		58.9
		MIN	36	32	32	40	31	29	28	34	35	36	35	31	35	34	53	54	43	29	29	31	46	46	47	34	35	37	41	45	54	37		37.6
<b>APPALACHIAN MOUNTAIN 07</b>																																		
CUMBERLAND 2	18	MAX	50	60	65	71	59	55	60	73	71	68	50	47	67	64	79	59	56	44	48	56	62	54	54	53	62	70	67	59	66	61		60.3
		MIN	29	31	31	35	30	27	27	30	33	33	35	27	26	38	51	52	40	29	25	27	41	46	46	34	34	33	34	36	48	39		34.9
FROSTBURG 2	07	MAX	41	54	59	64	53	46	52	66	65	64	42	37	58	61	72	53	53	36	39	54	58	49	52	49	50	60	59	59	61	55		54.0
		MIN	28	30	31	37	27	27	27	38	38	37	28	26	31	43	51	48	33	22	22	26	49	41	41	33	34	39	40	43	49	32		35.0
SHARPSBURG 5 S	07	MAX	52	58	62	65	56	53	58	67	70	65	53	47	65	62	72	61	57	44	46	53	59	55	57	58	60	65	65	68	69	63		59.5
		MIN	28	29	29	36	25	25	25	30	32	32	32	26	27	31	50	53	42	23	23	26	47	46	46	30	30	31	35	37	57	34		33.9
WILLIAMSPORT	06	MAX	51	60	63	56	58	54	58	67	70			48	66	63	69	59	59	45	47	53	51	54	50	59	61	64	62	68	68	63		58.8
		MIN	30	32	32	37	33	27	27	30	30			29	29	31	49	52	44	31	25	25	38	45	46	31	33	32	32	34	55	39		34.9
<b>ALLEGHENY PLATEAU 08</b>																																		
OAKLAND 1 SE	07	MAX	47	55	62	64	56	47	61	63	71	71	41	38	57	61	71	54	55	34	39	56	56	58	57	46	48	60	56	62	62	56		55.5
		MIN	28	25	26	30	27	25	26	26	25	27	27	27	30	36	50	49	32	21	23	25	25	47	43	30	31	30	30	37	53	30		31.4
SAVAGE RIVER DAM	08	MAX	45	51	58	62	56	45	52	62	64	62	45	40	58	64	72	56	55	38	38	54	57	53	53	52	51	58	59	59	63	57		54.6
		MIN	30	31	31	34	28	26	29	31	30	31	33	25	26	36	53	50	37	25	24	25	45	44	44	36	33	33	34	34	45	35		33.9
SINES DEEP CREEK	07	MAX	47	51	59	61	53	46	58	59	65	67	41	35	55	60	70	52	52	36	52	53	52	55	49		56	56	51	58	56		53.7	
		MIN	29	28	28	31	25	24	24	27	28	28	28	25	26	26	51	48	33	22	20	24	47	44	43	30		29	31	32	42	31		31.2
<b>DELAWARE NORTHERN 01</b>																																		
BEAR 2 SW	24	MAX	59	60	63	58	53	56	62	70	63	60	49	58	61	71	67	57	53	45	54	63	57	53	62	58	63	63	66	70	64	51		59.6
		MIN	36	31	34	40	30	28	32	37	34	44	37	29	37	55	55	53	38	28	25	44	49	49	41	33	35	33	35	44	47	41		38.5
WILMINGTON NEW CASTLE CO AP	24	MAX	60	59	63	58	53	55	62	74	60	59	49	58	61	70	67	58	53	46	54	65	56	52	61	58	64	65	66	68	68	52		59.8
		MIN	36	32	36	42	32	28	34	39	36	43	37	34	34	54	57	53	36	32	28	45	50	49	40	33	38	32	36	46	48	40		39.3



## DAILY TEMPERATURES (°F)

STATION	OB. TIME	MAX/MIN	DAY OF MONTH																															AVERAGE
			01	02	03	04	05	06	07	08	09	10	11	12	13	14	15	16	17	18	19	20	21	22	23	24	25	26	27	28	29	30	31	
WILMINGTON PORTER RES	24	MAX	56	57	60	54	49	53	59	67	59	58	46	56	59	67	57	53	42	51	63	57	52	59	55	62	64	63	67	67	49	57.6		
		MIN	42	37	40	42	34	33	40	44	42	42	36	34	40	52	52	53	37	33	32	45	49	47	40	36	39	45	42	52	47		40	
<b>SOUTHERN 02</b>	16	MAX	58	59	63	62	56	56	63	69	69	61	59	60	63	72	69	67	59	45	56	65	63	62	66	56	66	66	69	71	66	56	62.4	
DOVER		MIN	38	34	42	41	36	32	36	38	36	44	37	32	46	57	55	54	36	32	29	45	49	50	41	36	41	40	44	56	47	39		
LEWES	08	MAX																															41.4	
		MIN																																M
																																		M

## SNOWFALL AND SNOW ON GROUND (INCHES)

STATION		DAY OF MONTH																														
		01	02	03	04	05	06	07	08	09	10	11	12	13	14	15	16	17	18	19	20	21	22	23	24	25	26	27	28	29	30	31
<b>MARYLAND</b>																																
<b>SOUTHERN</b>																																
<b>EASTERN SHORE 01</b>																																
ASSATEAGUE	SNOWFALL																															
PRINCESS ANNE	SNOWFALL																															
SALISBURY 2N	SNOWFALL																															
SALISBURY FAA AP	SNOWFALL																															
SNOW HILL 4 N	SNOWFALL																															
<b>APPALACHIAN</b>																																
<b>MOUNTAIN 07</b>																																
FROSTBURG 2	SNOWFALL	-	-	-	-	-	-	-	-	-	0.4	T	-	-	-	-	-	-	-	-	-	-	-	-	-	-	-	-	-	-	-	
	SN ON GND	1		-	-	-	-	-	-	-	T		-	-	-	-	-	-	-	-	-	-	-	-	-	-	-	-	-	-	-	
SHARPSBURG 5 S	SNOWFALL			-	-																											
	SN ON GND	T		-	-	-	-	-	-	-	-	-	-	-	-	-	-	-	-	-	-	-	-	-	-	-	-	-	-	-	-	
WILLIAMSPORT	SNOWFALL																															
	SN ON GND																															
	WTR EQUIV																															
<b>ALLEGHENY PLATEAU 08</b>																																
OAKLAND 1 SE	SNOWFALL										0.5																					
	SN ON GND																															0.2
SAVAGE RIVER DAM	SNOWFALL																															
SINES DEEP CREEK	SNOWFALL	-	-	-	-	-	-	-	-	-	0.3	-	-	-	-	-	-	T	-	-	-	-	-	-	-	-	-	-	-	-	-	
	SN ON GND	-	-	-	-	-	-	-	-	-	T	-	-	-	-	-	-	T	-	-	-	-	-	-	-	-	-	-	-	-	-	
<b>DELAWARE</b>																																
<b>NORTHERN 01</b>																																
BEAR 2 SW	SNOWFALL																															
	SN ON GND																															
NEWARK UNIV FARM R	SNOWFALL																															
WILMINGTON NEW CASTLE CO AP	SNOWFALL																															
	SN ON GND																															
WILMINGTON PORTER RES	SNOWFALL																															

Snowfall: Includes snow and ice. Values for NWS stations (J index note) are Mid-Mid (LST).

Snow on ground: Includes snow, sleet, ice, and hail. Values for NWS stations (J index note) are observed at 12 UTC (GMT).

Water Equivalent: Given for NWS stations (J index note) only, when snow depth is 2 inches or more, and is measured at 18 UTC (GMT)

# PAN EVAPORATION AND WIND

STATION		DAY OF MONTH																															TOTAL OR AVERAGE	
		01	02	03	04	05	06	07	08	09	10	11	12	13	14	15	16	17	18	19	20	21	22	23	24	25	26	27	28	29	30	31		
MARYLAND UPPER SOUTHERN 04 BELTSVILLE	WIND	42	-	-	-	-	-	-	-	-	-	-	-	-	-	-	-	-	-	-	-	-	-	-	-	-	-	-	-	-	-	-	-	42
	EVAP	0.08	-	-	-	-	-	-	-	-	-	-	-	-	-	-	-	-	-	-	-	-	-	-	-	-	-	-	-	-	-	-	-	0.08
	MAX	-	-	-	-	-	-	-	-	-	-	-	-	-	-	-	-	-	-	-	-	-	-	-	-	-	-	-	-	-	-	-	-	57.0
	MIN	37	-	-	-	-	-	-	-	-	-	-	-	-	-	-	-	-	-	-	-	-	-	-	-	-	-	-	-	-	-	-	-	37.0
UPPER MARLBORO 3 NNW	WIND	-	-	-	-	-	-	-	-	-	-	-	-	-	-	-	-	-	-	-	-	-	-	-	-	-	-	-	-	-	-	-	M	
	EVAP	3.61	-	-	-	-	-	-	2.87	-	3.68	2.70	2.61	-	-	-	-	-	-	-	-	2.42	2.53	3.28	-	-	-	-	2.99	3.01	3.33	-	33.03	
	MAX	60	60	63	63	59	56	58	65	66	64	58	51	58	57	70	63	59	49	49	52	63	63	60	61	56	61	55	64	66	61	-	59.5	
	MIN	38	40	40	42	38	38	39	40	42	41	37	36	36	40	50	56	48	35	35	36	46	51	51	39	39	39	39	42	52	40	-	41.5	
ALLEGHENY PLATEAU 08 SAVAGE RIVER DAM	WIND	-	-	-	-	-	-	-	-	-	-	-	-	-	-	-	-	-	-	-	-	-	-	-	-	-	-	-	-	-	-	-	M	
	EVAP	-	-	-	-	-	-	-	-	-	-	-	-	-	-	-	-	-	-	-	-	-	-	-	-	-	-	-	-	-	-	-	-	M
	MAX	-	-	-	-	-	-	-	-	-	-	-	-	-	-	-	-	-	-	-	-	-	-	-	-	-	-	-	-	-	-	-	-	-
	MIN	-	-	-	-	-	-	-	-	-	-	-	-	-	-	-	-	-	-	-	-	-	-	-	-	-	-	-	-	-	-	-	-	M

Evaporation: Is measured in hundreths of inches.

Wind: Is measured in miles.

Max and Min: The maximum and minimum temperatures (Fahrenheit) of the water in the evaporation pan.

STATION INDEX

STATION	INDEX NO.	DIVISION	COUNTY	LATITUDE	LONGITUDE	ELEVATION (IN FEET)	OBSERVATION TIME AND TABLES			
							LOCAL STD TIME			
							TEMP	PRECIP	EVAP	SPECIAL SEE (NOTES)
MARYLAND										
ABERDEEN PHILLIPS FLD R	0015	06	HARFORD	39 28	76 10W	57	07	07		CH
ASSATEAGUE	0335	01	WORCESTER	38 4	75 13W	10	24	24		H
BALTIMORE WASH INTL AP R	0465	04	ANNE ARUNDEL	39 10	76 41W	156	24	24		CHJ
BELTSVILLE R	0700	04	PRINCE GEORGE'S	39 2	76 56W	145	08	08	08	CH
BRIGHTON DAM	1125	06	MONTGOMERY	39 11	77 0W	330		07		H
CATOCTIN MTN PARK	1530	06	FREDERICK	39 39	77 29W	1610	07	07		H
CONOWINGO DAM	2060	06	HARFORD	39 39	76 11W	40	07	07		H
CUMBERLAND 2	2282	07	ALLEGANY	39 39	78 45W	730	18	18		H
CYLBURN	2308	06	BALTIMORE	39 21	76 39W	235	08	08		H
DALECARLIA RSVR	2325	04	PRINCE GEORGE'S	38 56	77 6W	150	08	08		H
DAMASCUS 3 SSW	2336	06	MONTGOMERY	39 15	77 13W	700	22	22		H
EMMITSBURG 2 SE	2906	06	FREDERICK	39 41	77 17W	403	07	07		H
FREDERICK 2 NNE	3353	06	FREDERICK	39 26	77 24W	280	07	07		H
FROSTBURG 2	3415	07	ALLEGANY	39 40	78 56W	2170	07	07		H
LAUREL 3 W	5111	04	PRINCE GEORGE'S	39 5	76 54W	400	24	24		H
MARYLAND SCIENCE CENTER R	5718	04	BALTIMORE (CITY)	39 17	76 37W	20	24	24		CH
MECHANICSVILLE 5 NE	5865	03	ST. MARY'S	38 28	76 42W	100	07	07		H
MILLERS 4 NE R	5934	06	CARROLL	39 43	76 48W	860	18	18		CH
NATL ARBORETUM DC	6350	04	DISTRICT OF COLUMBIA	38 55	76 58W	50	07	07		H
OAKLAND 1 SE	6620	08	GARRETT	39 25	79 24W	2420	07	07		H
OXON HILL	6800	04	PRINCE GEORGE'S	38 47	76 60W	120	08	08		H
PRINCESS ANNE	7330	01	SOMERSET	38 13	75 41W	20	17	17		H
ROYAL OAK 2 SSW	7806	02	TALBOT	38 43	76 11W	10	17	17		H
SALISBURY 2N	8004	01	WICOMICO	38 24	75 36W	20	17	17		H
SALISBURY FAA AP	8005	01	WICOMICO	38 20	75 31W	48	24	24		H
SAVAGE RIVER DAM R	8065	08	GARRETT	39 31	79 8W	1495	08	08	08	CH
SHARPSBURG 5 S	8207	07	WASHINGTON	39 24	77 43W	500	07	07		H
SINES DEEP CREEK	8315	08	GARRETT	39 31	79 25W	2040	07	07		H
SMITHSBURG 2NW	8371	06	WASHINGTON	39 40	77 35W	670	08	08		H
SNOW HILL 4 N	8380	01	WORCESTER	38 14	75 23W	30	17	17		H
SOLOMONS	8405	03	CALVERT	38 19	76 27W	12	08	08		H
UPPER MARLBORO 3 NNW	9070	04	PRINCE GEORGE'S	38 51	76 46W	130	08	08	08	H
WESTMINSTER	9440	06	CARROLL	39 34	76 59W	765	07	07		H
WILLIAMSPORT	9570	07	WASHINGTON	39 36	77 50W	360	06	06		H
DELAWARE										
BEAR 2 SW	1200	01	NEW CASTLE	39 36	75 44W	80	24	24		H
DOVER	2730	02	KENT	39 15	75 31W	30	16	16		H
LEWES	5320	02	SUSSEX	38 47	75 8W	15	08	08		H
WILMINGTON NEW CASTLE CO AP R	9595	01	NEW CASTLE	39 40	75 36W	79	24	24		CHJ
WILMINGTON PORTER RES	9605	01	NEW CASTLE	39 46	75 32W	270	24	24		H

# REFERENCE NOTES

**STATION NAMES:** Name of the city, town or locality. Figures and letters following the station names indicate the distance in miles and direction from the post office or town community center.

**DIVISIONS:** Areas within a state of similar climatological characteristics. Division averages are calculated using data from stations that record both temperature and precipitation (i.e. not precipitation alone).

**NORMALS:** The average value of the meteorological element over a time period. Effective 1 January 2002, the averaging period is 1971 to 2000. The normals for National Weather Service localities have been adjusted so as to be representative for the current observation site.

**MONTHLY DEGREE DAY TOTALS:** One heating (cooling) degree day is accumulated for each whole degree that the daily mean temperature is below (above) 65 degrees Fahrenheit.

**PRECIPITATION:** Values shown in hundredths of inches are water equivalent totals, i.e., total of liquid and melted frozen precipitation. In the "Monthly Summarized Data" table the total snow and sleet values shown in tenths of inches are unmelted amounts. The max depth on ground values of snow and sleet shown in whole inches are cumulative unmelted amounts. The number of days with .10, .50, 1.00 or more refers to water equivalents.

**PRECIPITATION QUALITY CONTROL:** The NCDC quality control process may flag precipitation data that are spatially inconsistent, exceed climatological limits, or are inconsistent with prevailing weather patterns.

**TEMPERATURE:** Original temperature values are given in the "Daily Temperature" table. Summary temperature information (averages, departures, extremes, monthly degree day totals) is based on the values labeled MAX/MIN.

**WIND:** (As shown in the "Evaporation and Wind" table) the total wind movement in miles over the evaporation pan as determined by an anemometer recorder located 6-8 inches above the pan.

## SYMBOLS AND LETTERS USED IN THE STATION INDEX TABLE

- C Station is equipped with recording rain gage (R) but values in this bulletin are from a non-recording rain gage unless indicated by an R.
- G Observations appear in the "Soil Temperatures" table.
- H Observations appear in the "Snowfall and Snow on the Ground" table.
- J Station also published as a Local Climatological Data publication.
- VAR Observation time varies.
- SR Observation time near sunrise.
- SS Observation time near sunset.

## SYMBOLS AND LETTERS USED IN THE DATA TABLES

(DAILY DATA ARE FOR THE 24 HOURS IMMEDIATELY PRECEDING OBSERVATION TIME.)

**BLANK** Entries in the "Monthly Summarized Data" table indicate no record.

**BLANK** Entries in the "Daily Precipitation" and "Snowfall and Snow on the Ground" tables indicate zero.

**BLANK** Entries in the "Daily Temperature" table indicate a missing record

- No record. Data not recorded or not received in time for publication.
- + Precipitation or temperature extremes occurred on one or more previous dates during the month.

\* Rain gage not read. Precipitation is included in the amount following the asterisks. Time distribution may not be known. A \* preceding the monthly total indicates precipitation amount is being carried forward to next month's total, and may include amounts from the previous month(s).

a As a subscript, indicates accumulated total.

A Amount of precipitation is the total of observer's entries for the current month. It may include precipitation that occurred during the previous month. Refer to earlier bulletin to determine date of last reading. (Hawaii stations)

F Monthly calculation flagged value. F is appended to average and/or total values computed which exclude one or more daily data values that have been flagged by the GHCN-Daily Dataset

g Indicates there were no stations reporting within climate division.

Spatial interpolation based on stations in surrounding climate divisions was used to estimate the divisional value.

M Insufficient or partial data. M is appended to average and/or total values computed with 1-9 daily values missing. M appears alone if 10 or more daily values are missing, (8 or more for wind and evaporation).

N Indicates snow fall or Snowdepth totals are computed with one or more missing days.

R Amounts from recording rain gage.

T Trace. An amount too small to measure.

**SEASONAL TABLES:** Monthly and seasonal snowfall and heating degree days for the 12 months ending with the June data are published in the July issue of this bulletin. Cooling degree days for the calendar year are published in the "Climatological Data Annual Summary."

Information concerning the history of changes in locations, exposure, etc. of substations is kept on file at the National Climatic Data Center. Historical information of regular National Weather Service Offices may be obtained from the "Local Climatological Data" annual publication. The contents of this publication may be reprinted or otherwise used freely, with proper credit to the National Climatic Data Center. The data are also available digitally.

Effective with the January 2011 Data-Month, COOP Observer Names are no longer included in the Monthly and Annual Climatological Data Publications. This information is not published to ensure the privacy of personal information pursuant to Section 208 of the E-Government Act of 2002 (44 USC 3601).

The GHCN-Daily Quality Control Flags shown below are displayed as superscripts with the data. For more information on Global Historical Climatology Network - Daily and flags, see:

<http://www.ncdc.noaa.gov/oa/climate/ghcn-daily/>  
and

Comprehensive Automated Quality Assurance of Daily Surface Observations.

Durre, Imke, Matthew J. Menne, Byron E. Gleason, Tamara G. Houston,

Russell S. Vose, 2010: J. Appl. Meteor. Climatol., 49, 16151633.

doi: 10.1175/2010JAMC2375.1

Blank = Passed All checks

D = failed duplicate check

G = failed gap check

I = failed internal consistency check

K = failed streak/frequent-value check

L = failed check on length of multiday period

M = failed megaconsistency check

N = failed naught check

O = failed climatological outlier check

R = failed lagged range check

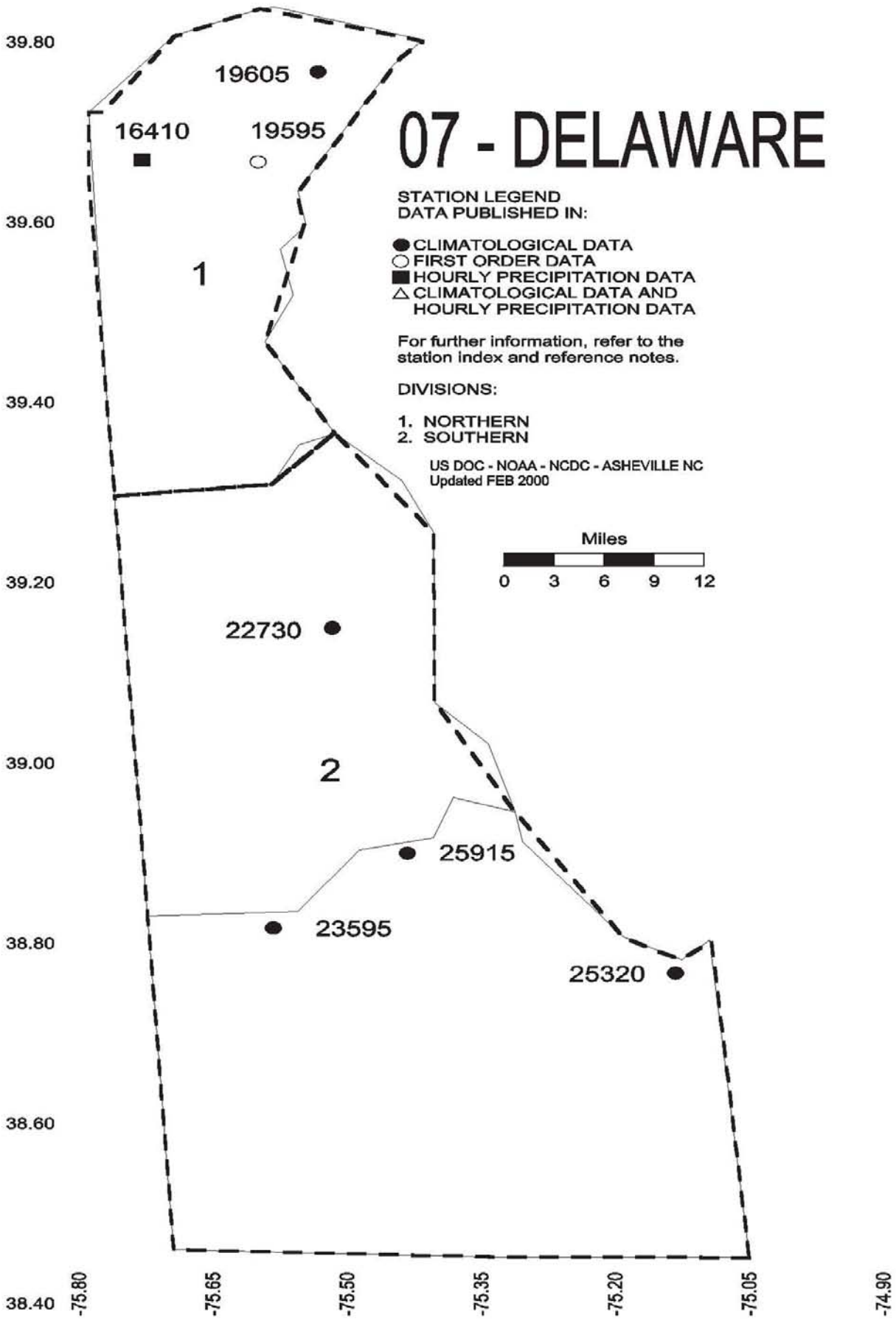
S = failed spatial consistency check

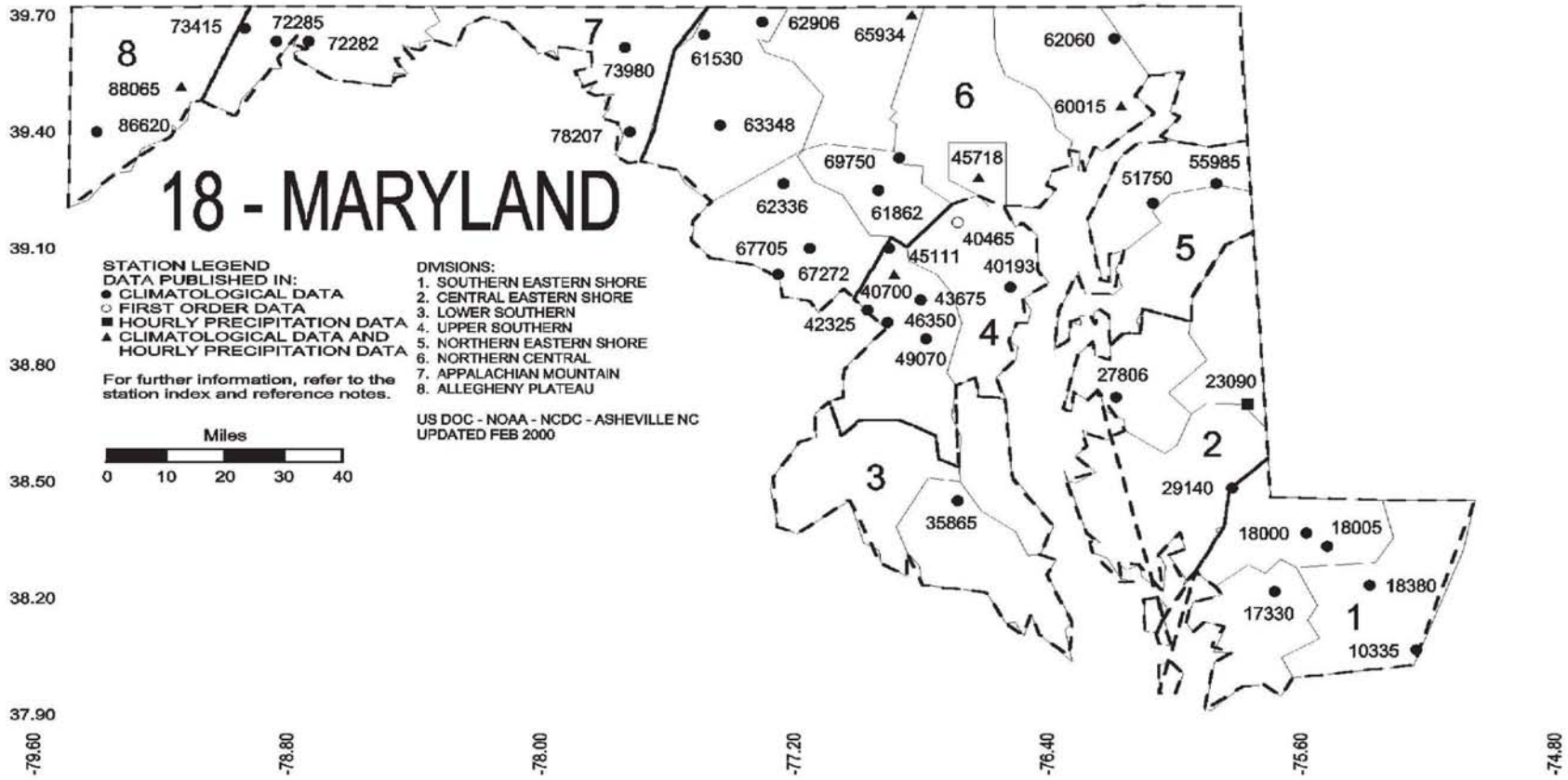
T = failed temporal consistency check

W = temperature too warm for snow

X = failed bounds check

# 07 - DELAWARE





## **These and other publications are available from the National Climatic Data Center**

### **Hourly Precipitation Data**

This publication contains hourly precipitation amounts obtained from recording rain gages located at National Weather Service, Federal Aviation Administration, and cooperative observer stations. Published data are displayed in inches and tenths or inches and hundredths at local standard time. HPD includes maximum precipitation for nine (9) time periods from 15 minutes to 24 hours, for selected stations.

### **Climatological Data**

Monthly editions contain station daily maximum and minimum temperatures and precipitation. Some Stations provide daily snowfall, snow depth, evaporation, and soil temperature data. Each edition also contains monthly summaries for heating and cooling degree days (65 degree F base). The July issue contains a recap of monthly heating degree days and snow data for the preceding July through June.

The Annual issue contains monthly and annual averages of temperature, precipitation, temperature extremes, freeze data, soil temperatures, evaporation, and a recap of monthly cooling degree days.

### **Storm Data**

Monthly issues contain a chronological listing, by states, of occurrences of storms and unusual weather phenomena. Reports contain information on storm paths, deaths, injuries, and property damage. An "Outstanding storms of the month" section highlights severe weather events with photographs, illustrations, and narratives. The December issue includes annual tornado, lightning, flash flood, and tropical cyclone summaries.

### **Monthly Climatic Data for the World**

This publication contains monthly means for temperature, pressure, precipitation, vapor pressure, and sunshine for approximately 2,000 surface data collection stations worldwide and monthly mean upper air temperatures, dew point depressions, and wind velocities for approximately 500 observing sites.

### **Local Climatological Data**

LCD publications summarize temperature, relative humidity, precipitation, cloudiness, wind speed and direction observations for several hundred cities in the U.S. and its territories. Each monthly publication also contains 3 hourly weather observations for that month and a hourly summary of precipitation. Annual LCD publications contain a summary of the past calendar year as well as historical averages and extremes.

For Information Call:

(828) 271-4800 Option 2

(828) 271-4010 (TDD)

(828) 271-4876 (Fax)



NOAA\National Climatic Data Center  
Attn: User Engagement & Services Branch  
151 Patton Avenue  
Asheville, NC 28801-5001

Customer Services Number: (828) 271-4800, option 2  
TDD : (828) 271-4010  
Fax number: (828) 271-4876

NCDC now offers free online access to the *Climatological Data* publication.  
Go to : [www.ncdc.noaa.gov](http://www.ncdc.noaa.gov) and choose Most Popular.