



# CLIMATOLOGICAL DATA MARYLAND AND DELAWARE



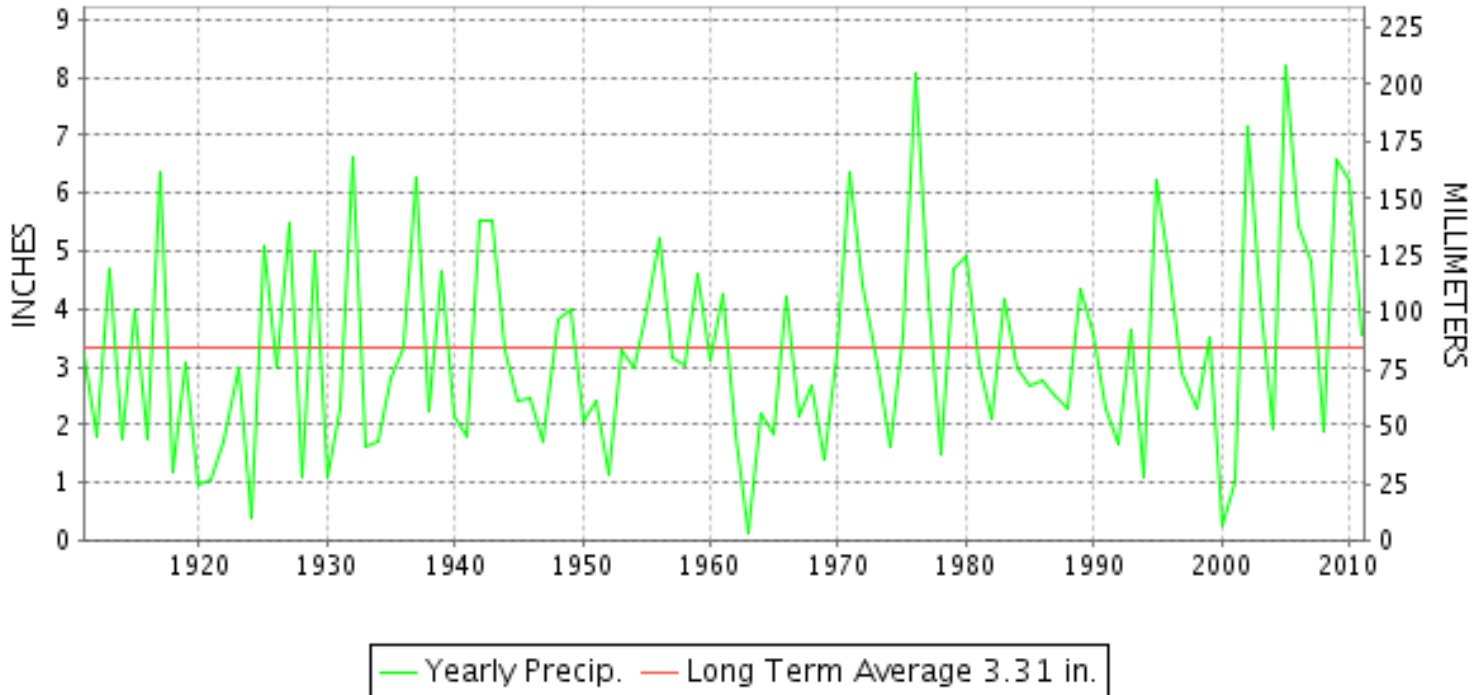
OCTOBER 2011

VOLUME 115 NUMBER 10

ISSN 0145-0549

GHCND Ver: 2.92-upd-2012041805

## OCTOBER PRECIPITATION BY YEAR



### TEMPERATURE AND PRECIPITATION EXTREMES

#### MARYLAND

HIGHEST TEMPERATURE	87	OCTOBER 11	NATL ARBORETUM DC
LOWEST TEMPERATURE	20	OCTOBER 31	SMITHSBURG 2NW
GREATEST TOTAL PRECIPITATION	6.73		OAKLAND 1 SE
LEAST TOTAL PRECIPITATION	2.00		SALISBURY FAA AP
GREATEST 1 DAY PRECIPITATION	1.63	OCTOBER 12	CONOWINGO DAM
GREATEST TOTAL SNOWFALL	15.0		CATOCTIN MTN PARK
GREATEST DEPTH OF SNOW OR ICE	14		CATOCTIN MTN PARK

"I certify that this is an official publication of the National Oceanic and Atmospheric Administration (NOAA) It is compiled using information from weather observing sites supervised by NOAA/National Weather Service and received at the National Climatic Data Center(NCDC), Asheville, North Carolina 28801."

Director  
National Climatic Data Center

noaa

National  
Oceanic and  
Atmospheric Administration

National  
Environmental Satellite, Data  
and Information Service

National  
Climatic Data Center  
Asheville, North Carolina

**DELAWARE**

HIGHEST TEMPERATURE	85	OCTOBER 09	WILMINGTON NEW CASTLE CO AP
LOWEST TEMPERATURE	27	OCTOBER 31	BEAR 2 SW
GREATEST TOTAL PRECIPITATION	3.75		WILMINGTON PORTER RES
LEAST TOTAL PRECIPITATION	3.05		WILMINGTON NEW CASTLE CO AP
GREATEST 1 DAY PRECIPITATION	1.57	OCTOBER 30	DOVER
GREATEST TOTAL SNOWFALL	1.3		WILMINGTON PORTER RES

MARYLAND AND DELAWARE  
201110

# MONTHLY STATION AND DIVISION SUMMARY

STATION	TEMPERATURE (°F)										PRECIPITATION (IN)													
	AVERAGE MAXIMUM	AVERAGE MINIMUM	AVERAGE	DEPARTURE FROM NORMAL	HIGHEST	DATE	LOWEST	DATE	HEATING DEG. DAYS	COOLING DEG. DAYS	NO. OF DAYS				TOTAL	DEPARTURE FROM NORMAL	GREATEST 24 HOURS	DATE	ICE PELLETS, SNOW			NO. OF DAYS		
											MAX		MIN						TOTAL	MAX DEPTH ON GROUND	DATE	.10 OR MORE	.50 OR MORE	1.00 OR MORE
											>=90	<=32	<=32	<=0										
	<b>MARYLAND SOUTHERN EASTERN SHORE 01</b>																							
ASSATEAGUE	71.1	51.6	61.4	1.8	81	10	34	31	141	37	0	0	0	0	2.01	-1.29	1.25	29	0.0	0		3	2	1
PRINCESS ANNE	M	M	M											M					0.0	0				
SALISBURY 2N	M	M	M											M					0.0	0				
SALISBURY FAA AP	69.8	47.8	58.8	1.2	85	10	29	31	212	28	0	0	2	0	2.00	-1.64	0.92	29	0.0	0		2	2	0
SNOW HILL 4 N	71.5	46.8	59.2	0.8	85	10	26	31	203	32	0	0	1	0	M 2.42		1.11	29	0.0	0		4	2	1
--DIVISIONAL DATA----->			59.8	1.5											2.14	-1.23								
<b>CENTRAL EASTERN SHORE 02</b>																								
ROYAL OAK 2 SSW	68.4	50.0	59.2	-0.6	82	10	31	31	189	16	0	0	1	0	2.44	-1.02	1.43	29	0.0	0		6	1	1
--DIVISIONAL DATA----->			59.2	1.0											2.44	-0.80								
<b>LOWER SOUTHERN 03</b>																								
MECHANICSVILLE 5 NE	65.0	45.8	55.4	-1.3	77	11	29	31	294	4	0	0	2	0	F 3.05		1.18	29	M T	0		5	2	1
SOLOMONS	68.2	53.6	60.9		81	01	35	30	151	32	0	0	0	0	FM 0.77		0.23	13	0.0	0		3	0	0
--DIVISIONAL DATA----->			58.2	1.3											1.91	-1.57								
<b>UPPER SOUTHERN 04</b>																								
BALTIMORE WASH INTL AP	66.3	47.0	56.7	1.3	85	10	30	31	261	9	0	0	2	0	3.31	0.15	1.09	29	T	0		8	2	1
BELTSVILLE	65.7	47.3	56.5	0.4	82	11+	29	31	265	11	0	0	1	0	4.42	0.86	0.93	14	0.0	0		10	5	0
DALECARLIA RSVR	64.0	46.6	55.3	-2.0	75	19+	31	31	298	6	0	0	2	0	F 3.89		1.13	14	0.0	0		8	4	1
LAUREL 3 W	65.5	48.0	56.8	-0.8	84	10	32	30+	264	15	0	0	2	0	4.26	0.64	1.10	29	0.0	0		8	3	1
MARYLAND SCIENCE CENTER	68.4	53.5	61.0		86	10	37	30	160	46	0	0	0	0	2.67		0.90	29	0.0	0		7	2	0
NATL ARBORETUM DC	69.6M	47.0M	58.3M		87	11	31	31	202	24	0	0	1	0	M 3.68		0.90	30	M 0.0	0		8	4	0
OXON HILL	66.3	48.0	57.2		81	11	32	31	246	10	0	0	1	0	3.80		0.81	30	M 0.1	0		11	3	0
UPPER MARLBORO 3 NNW	67.0	45.6	56.3	1.0	83	10	28	31	270	7	0	0	2	0	3.58	-0.08	1.50	30	T	0		9	1	1
--DIVISIONAL DATA----->			57.3	0.9											3.70	0.22								
<b>NORTHERN EASTERN SHORE 05</b>																								
CHESTERTOWN	M	M	M												M				0.0	0				
--DIVISIONAL DATA----->			57.0g	0.5											3.06g	-0.31								
<b>NORTHERN CENTRAL 06</b>																								
ABERDEEN PHILLIPS FLD	65.4	46.6	56.0	-1.3	83	10	29	31	277	4	0	0	1	0	3.37	-0.02	0.55	13	T	T	30	7	1	0
BRIGHTON DAM	M	M	M												4.28	0.67	0.98	14	M 0.0	0		8	3	0
CATOCTIN MTN PARK	60.5	44.6	52.6	-1.9	78	09	27	30	378	0	0	0	4	0	6.53	2.64	1.11	02	M 15.0	14	30	11	6	2
CONOWINGO DAM	67.1M	45.4M	56.3M		80	10	31	31	256	1	0	0	1	0	M 5.96		1.63	12	0.0	0		10	4	2
CYLBURN	62.6	46.4	54.5		76	10	29	31	317	1	0	0	2	0	3.83		0.62	20	0.0	0		7	3	0
DAMASCUS 3 SSW	61.5	46.6	54.1		77	09	28	30	331	0	0	0	2	0	5.74		1.25	29	M 3.8	M 3	31	8	6	2

# MONTHLY STATION AND DIVISION SUMMARY

STATION	TEMPERATURE (°F)											PRECIPITATION (IN)												
	AVERAGE MAXIMUM	AVERAGE MINIMUM	AVERAGE	DEPARTURE FROM NORMAL	HIGHEST	DATE	LOWEST	DATE	HEATING DEG. DAYS	COOLING DEG. DAYS	NO. OF DAYS				TOTAL	DEPARTURE FROM NORMAL	GREATEST 24 HOURS	DATE	ICE PELLETS, SNOW			NO. OF DAYS		
											MAX		MIN						TOTAL	MAX DEPTH ON GROUND	DATE	.10 OR MORE	.50 OR MORE	1.00 OR MORE
											>=90	<=32	<=32	<=0										
EMMITSBURG 2 SE	62.0	44.1	53.1	-1.8	77	11	27	31	362	0	0	0	2	0	5.04	1.56	1.15	20	3.0	0		8	4	2
FREDERICK 2 NNE	64.3	45.1	54.7		79	10	29	31	312	0	0	0	2	0	4.51		1.05	20	M 0.5	0		9	4	1
MILLERS 4 NE	63.2	44.6	53.9	-1.1	81	09	27	31+	337	0	0	0	3	0	4.66	1.22	1.22	29	6.1	6	31	9	3	2
SMITHSBURG 2NW	62.8M	42.4M	52.6M		75	11+	20	31	339	0	0	0	2	0	M 5.60		1.30	27+	M 4.5	5	27	9	5	3
WESTMINSTER	M	M													M				0.0	0				
--DIVISIONAL DATA----->			54.2	-1.1											4.95	1.44								
<b>APPALACHIAN</b>																								
<b>MOUNTAIN 07</b>																								
CUMBERLAND 2	63.2	44.2	53.7	-0.2	77	10+	29	31+	342	0	0	0	4	0	3.84	1.15	0.78	02	M 3.0	2	30	11	2	0
FROSTBURG 2	57.4	41.1	49.3	0.0	77	11+	26	31+	481	0	0	0	4	0	6.12	2.91	1.62	02	M 9.1	7	30	12	4	1
SHARPSBURG 5 S	63.0	42.1	52.6		77	10	24	31+	377	0	0	0	4	0	5.53		1.26	30	M 3.0	3	30	8	3	1
WILLIAMSPORT	64.0	44.5	54.3		78	10	29	31	327	0	0	0	2	0	4.98		0.90	02	0.0	0		10	4	0
--DIVISIONAL DATA----->			52.5	-0.2											5.12	2.04								
<b>ALLEGHENY PLATEAU 08</b>																								
OAKLAND 1 SE	57.9	38.6	48.3	-1.7	78	10	27	30+	512	0	0	0	6	0	6.73	3.61	1.13	27	5.8	5	29	15	5	1
SAVAGE RIVER DAM	58.5	41.9	50.2	0.2	73	11	29	31	451	0	0	0	6	0	4.47	1.66	0.74	02	0.0	0		12	2	0
SINES DEEP CREEK	56.1M	38.1M	47.1M		75	10	29	31+	531	0	0	0	6	0	M 7.58		1.30	27	M 5.0	5	30	16	5	2
--DIVISIONAL DATA----->			48.5	-0.7											6.26	3.23								
<b>DELAWARE</b>																								
<b>NORTHERN 01</b>																								
BEAR 2 SW	65.2	45.7	55.5		83	09	27	31	291	1	0	0	2	0	3.51		1.43	29	0.3	0		7	3	1
WILMINGTON NEW CASTLE CO AP	65.4	46.8	56.1	0.3	85	09	28	31	276	8	0	0	1	0	3.05	-0.03	1.26	29	0.3	0		6	3	1
WILMINGTON PORTER RES	63.3	48.1	55.7		79	09	32	31+	293	12	0	0	2	0	3.75		1.39	29	1.3	0		8	2	1
--DIVISIONAL DATA----->			55.8	0.0											3.44	0.08								
<b>SOUTHERN 02</b>																								
DOVER	68.1	48.4	58.3	-0.5	82	09	32	31	217	13	0	0	1	0	3.17	-0.09	1.57	30	0.0	0		5	2	1
LEWES	M	M	M												M				M 0.0	0				
--DIVISIONAL DATA----->			58.3	1.0											3.17	-0.21								

DAILY PRECIPITATION (INCHES)

STATION	TOTAL	DAY OF MONTH																															
		01	02	03	04	05	06	07	08	09	10	11	12	13	14	15	16	17	18	19	20	21	22	23	24	25	26	27	28	29	30	31	
<b>MARYLAND</b>																																	
<b>SOUTHERN</b>																																	
<b>EASTERN SHORE 01</b>																																	
ASSATEAGUE	2.01	0.02										0.02								0.54											1.25		0.18
PRINCESS ANNE	M	-	-						-	-		0.00 <sup>L</sup>	1.20 <sup>L</sup>		-	-												0.02 <sup>L</sup>	1.01 <sup>L</sup>				0.22
SALISBURY 2N	M	-	-	-																													
SALISBURY FAA AP	2.00	0.02	T	0.06								0.01	0.01	0.03						0.88				0.01		T	0.02	0.03	0.92			0.01	
SNOW HILL 4 N	M 2.42	0.40	0.03	0.04								T	T	0.02	0.10					0.62	0.05								1.11	0.05			
<b>CENTRAL</b>																																	
<b>EASTERN SHORE 02</b>																																	
FEDERALSBURG R	M	-	-	-	-	-	-	-	-	-	-	-	-	-	-	-	-	-	-	-	-	-	-	-	-	-	-	-	-	-	-	-	-
ROYAL OAK 2 SSW	2.44	0.09	0.03	0.10								0.20	0.01	0.15						0.18	0.02					0.10		0.05	0.03	1.43	0.05		
<b>LOWER SOUTHERN 03</b>																																	
MECHANICSVILLE 5 NE	F 3.05	0.02 <sup>L</sup>	0.03	0.09	T							T	0.88	0.06	0.38					0.09	0.10					T		T	0.07	1.18	0.17		
SOLOMONS	FM 0.77	0.19	*	0.06 <sub>a</sub>	0.01					*	0.00 <sub>a</sub>	0.05	0.23	0.01	-					0.13	0.08						0.01		0.00 <sup>L</sup>	1.57 <sup>L</sup> <sub>a</sub>			
<b>UPPER SOUTHERN 04</b>																																	
BALTIMORE WASH INTL AP	3.31	0.21	0.12	0.02							T	0.40	0.27	0.18						0.76				T		0.06	0.15	0.05	1.09				
BELTSVILLE R	4.42		0.36	0.01	0.03					0.01		0.04	0.52	0.93	0.26					0.57	0.16			0.01	0.03		0.22	0.10	0.51	0.66			
DALECARLIA RSVR	F 3.89		0.50	0.04	0.03							0.04	0.70	1.13	0.26					0.56	0.22						0.29	0.12	0.60 <sup>L</sup>	0.80 <sup>L</sup> <sub>a</sub>			
LAUREL 3 W	4.26	0.42	0.24	0.05								0.37	0.49	0.67						0.72							0.20		1.10				
MARYLAND SCIENCE CENTER	2.67	0.02	0.11	0.02								0.31	0.17	0.29						0.56					0.05	0.21	0.03	0.90					
NATL ARBORETUM DC	M 3.68		0.42		0.01							T	0.64	0.61	-				-	-	0.17				0.07		0.19	0.17	0.50	0.90			
OXON HILL	3.80		0.45	0.15	T							0.01	0.54	0.26	0.23					0.31	0.14				0.16		0.05	0.14	0.55	0.81			
UPPER MARLBORO 3 NNW	3.58		0.39	T	0.02								0.31	0.10	0.46					0.26	0.11				0.09	0.02	0.12	0.08		1.50	0.12		
<b>NORTHERN</b>																																	
<b>EASTERN SHORE 05</b>																																	
CHESTERTOWN	M	-	-	-	-	-	-	-	-	-	-	-	-	-	-	-	-	-	-	-	-	-	-	-	-	-	-	-	-	-	-	-	-
<b>NORTHERN CENTRAL 06</b>																																	
ABERDEEN PHILLIPS FLD	3.37		*	0.32 <sub>a</sub>	0.03							0.16	0.55	0.06	0.33					0.23	0.26					0.02	0.10	0.13	*	1.18 <sub>a</sub>			
BRIGHTON DAM	4.28	0.36	0.57	0.07								0.25	0.45	0.98													0.35		0.95				
CATOCTIN MTN PARK	6.53	0.24	1.11	0.03								0.41	0.75	0.55						0.21	0.94	0.05		0.01	0.03		0.21	0.01	1.10	0.78	0.10		
CONOWINGO DAM	M 5.96	0.90	0.38	0.04								1.63	0.26	0.17	1.16					0.28	0.70				0.03	0.01	0.05	0.13	0.22	-			
CYLBURN	3.83		*	*	0.22 <sub>a</sub>							0.04	0.53	*	0.69 <sub>a</sub>					0.43	0.62	T					0.17	0.13	0.41	0.59			
DAMASCUS 3 SSW	5.74	0.50	0.65	0.07							T	0.26	1.10	0.70						0.90	0.05		0.02		T		0.17	0.03	1.25				
EMMITSBURG 2 SE	5.04		1.03	0.13	T							T	0.69	0.42	0.28					T	1.15				0.05		0.07	0.04	0.27	0.91			
FREDERICK 2 NNE	4.51		0.61	0.03	0.02							0.02	0.57	0.42	0.23					0.17	1.05				0.02		0.09	0.12	0.31	0.85			
MILLERS 4 NE R	4.66	0.07	0.53	0.10	0.01							0.17	0.48	1.14						T	0.39	0.27		0.01	0.05	T	0.20	T	1.22	0.02			
SMITHSBURG 2NW	M 5.60		1.05	0.10								0.07	0.60	0.10	0.75										0.11	0.18	1.30	-	-	-	-		
WESTMINSTER	M	-	-	-	-	-	-	-	-	-	-	-	-	-	-	-	-	-	-	-	-	-	-	-	-	-	-	-	-	-	-	-	-
<b>APPALACHIAN</b>																																	
<b>MOUNTAIN 07</b>																																	
CUMBERLAND 2	3.84		0.78	0.30	0.14							0.25	0.32	0.44	0.18											0.02		0.14		0.34	0.53		

DAILY PRECIPITATION (INCHES)

STATION	TOTAL	DAY OF MONTH																														
		01	02	03	04	05	06	07	08	09	10	11	12	13	14	15	16	17	18	19	20	21	22	23	24	25	26	27	28	29	30	31
FROSTBURG 2	6.12	0.04	1.62	0.39	0.17	0.01						0.35	0.64	0.39	0.28		0.14				0.56	0.09	0.04			0.06		0.38	0.04	0.54	0.38	
SHARPSBURG 5 S	5.53	*	1.26 <sub>a</sub>	0.26	0.05							0.02	0.73	0.18	*		0.23 <sub>a</sub>		0.03	0.82					0.03		0.15	0.11	0.40	1.26		
WILLIAMSPORT	4.98	0.02	0.90	0.25	0.02							0.03	0.58	0.73	0.23				0.08	0.60	0.02	0.05			0.13		0.08	0.06	0.24	0.48		
<b>ALLEGHENY PLATEAU 08</b>																																
OAKLAND 1 SE	6.73	0.22	0.81	0.55	0.30	0.03						0.33	0.10	0.54	0.46		0.56			0.33	0.20	0.05			0.09		1.13	0.35	0.40	0.28		
SAVAGE RIVER DAM	4.47		0.74	0.15	T							0.34	0.31	0.52	0.31		0.28			0.40	0.04				0.12		0.46	0.03	0.44	0.33		
SINES DEEP CREEK	M 7.58	0.25	1.19	0.56	0.20	0.06				-		0.32	0.11	0.47	0.43		0.70			0.42	0.24	0.03			0.24		1.30	0.42	0.50	0.14		
<b>DELAWARE</b>																																
<b>NORTHERN 01</b>																																
BEAR 2 SW	3.51	0.04	0.51	0.01								0.39	0.05	0.14					0.57	0.01				0.11		T	0.25		1.43			
NEWARK UNIV FARM R	M	-	-	-	-	-	-	-	-	-	-	-	-	-	-	-	-	-	-	-	-	-	-	-	-	-	-	-	-	-	-	
WILMINGTON NEW CASTLE CO AP R	3.05	0.01	0.53	0.01								0.29	0.03	0.02					0.60					0.15			0.15	T	1.26			
WILMINGTON PORTER RES	3.75	0.08	0.42									0.28	0.10	0.43					0.67					0.10			0.21		1.39	0.07		
<b>SOUTHERN 02</b>																																
DOVER	3.17		0.06	0.03								0.18	0.23	0.36					0.62	0.06							0.06			1.57		
LEWES	M	-	-	-	-	-	-	-	-	-	-	-	-	-	-	-	-	-	-	-	-	-	-	-	-	-	-	-	-	-	-	

DAILY TEMPERATURES (°F)

STATION	OB. TIME	MAX/MIN	DAY OF MONTH																															AVERAGE	
			01	02	03	04	05	06	07	08	09	10	11	12	13	14	15	16	17	18	19	20	21	22	23	24	25	26	27	28	29	30	31		
<b>MARYLAND SOUTHERN EASTERN SHORE 01</b>																																			
ASSATEAGUE	24	MAX	72	57	63	70	78	72	74	74	79	81	70	74	78	76	72	73	76	76	74	71	68	68	68	69	71	75	76	70	60	58	62	71.1	
		MIN	55	51	44	49	55	49	43	49	48	51	55	66	65	66	59	55	63	57	64	57	52	50	46	41	47	48	61	44	39	37	34	51.6	
PRINCESS ANNE	17	MAX			62	70	74	72	75			85	82	75	81	79			73	77	75		65			68	68	73	74	72			59	M	
		MIN			45	52	56	49	43			52	56	65	66	57			54	53	64		46			41	48	49	48	41			30	M	
SALISBURY 2N	17	MAX																																M	
		MIN																																M	
SALISBURY FAA AP	24	MAX	65	55	61	68	75	72	74	76	83	85	73	75	83	75	72	72	73	79	75	72	66	64	67	69	68	74	75	50	55	55	59	69.8	
		MIN	50	46	45	46	54	46	42	45	47	50	58	67	66	56	48	43	53	55	65	53	43	44	37	40	47	49	47	42	38	31	29	47.8	
SNOW HILL 4 N	17	MAX	81	60	61	68	73	75	74	75	83	85	81	75	81	75	73	73	74	78	74	73	66	64	67	70	67	73	76	72	55	54	60	71.5	
		MIN	54	45	41	42	46	51	37	41	44	46	54	66	61	58	44	41	61	51	63	56	45	41	33	37	45	44	61	42	43	33	26	46.8	
<b>CENTRAL EASTERN SHORE 02</b>																																			
ROYAL OAK 2 SSW	17	MAX	67	52	54	68	74	69	74	74	79	82	73	69	78	74	72	72	72	77	73	71	63	62	67	69	66	72	70	68	46	53	59	68.4	
		MIN	52	46	44	47	55	48	45	46	48	51	59	63	65	61	57	57	58	53	60	56	51	42	40	45	50	48	57	39	38	37	31	50.0	
<b>LOWER SOUTHERN 03</b>																																			
MECHANICSVILLE 5 NE	07	MAX	75	54	49	54	64	71	66	69	68	75	77	68	66	74	69	68	68	68	71	69	60	61	59	65	64	65	71	68	66	43	51	65.0	
		MIN	50	44	44	46	46	46	43	43	43	45	50	52	63	63	49	46	46	52	56	52	45	42	37	37	44	44	53	39	39	31	29	45.8	
SOLOMONS	08	MAX	81	62	55	67	69	72	71	71	70	79	79	70	71	74	72	71	72	69	72	71	70	62	62	65	67	66	74	75	50	48	57	68.2	
		MIN	54	46	49	51	56	55	53	55	55	59	63	66	66	66	55	56	61	58	61	55	49	49	48	51	52	56	62	44	38	35	39	53.6	
<b>UPPER SOUTHERN 04</b>																																			
BALTIMORE WASH INTL AP	24	MAX	59	51	56	71	76	72	72	75	83	85	72	65	71	70	71	71	72	74	71	69	61	60	65	67	68	63	64	50	42	54	56	66.3	
		MIN	49	44	43	45	50	45	45	46	49	52	59	62	63	56	51	49	50	48	60	51	45	42	38	42	44	53	43	38	33	31	30	47.0	
BELTSVILLE	08	MAX	76	53	51	52	68	74	71	74	75	82	82	71	64	72	69	71	71	72	73	70	60	59	59	64	68	66	63	64	50	39	53	65.7	
		MIN	53	44	42	45	49	48	44	47	47	51	57	62	62	62	51	44	55	49	56	54	45	42	38	43	42	47	53	36	37	29	47.3		
DALECARLIA RSVR	08	MAX	69	51	51	51	65	71	68	70	73	75	72	72	69	75	66	69	72	72	75	68	58	60	56	62	67	64	66	63	47	37	50	64.0	
		MIN	51	43	43	44	49	46	45	48	49	51	59	59	61	63	49	46	46	53	50	53	45	42	39	40	44	44	47	37	36	32	31	46.6	
LAUREL 3 W	24	MAX	61	50	50	69	75	71	74	74	81	84	72	66	71	69	71	70	72	74	70	69	59	57	63	67	66	61	63	51	41	53	55	65.5	
		MIN	46	42	43	43	42	47	45	50	56	62	62	60	60	56	50	49	56	52	58	52	44	46	41	46	48	49	48	35	32	32	35	48.0	
MARYLAND SCIENCE CENTER	24	MAX	64	53	58	71	78	72	74	76	85	86	75	68	74	73	74	74	75	74	71	63	61	67	68	69	67	67	53	44	54	58	68.4		
		MIN	53	48	47	50	55	55	54	56	58	63	68	65	65	60	57	54	60	58	63	56	51	49	48	53	52	55	47	43	39	37	40	53.5	
NATL ARBORETUM DC	07	MAX	80	54	55	55	73	79	75	78	79	82	87	82	78	79																			
		MIN	54	44	44	48	50	47	46	46	50	45	52	61	59	63																			
OXON HILL	08	MAX	75	60	51	53	68	74	71	74	75	79	81	70	65	77	71	70	71	71	72	69	61	61	60	64	68	67	68	65	50	41	52	66.3	
		MIN	57	47	44	49	50	49	47	47	49	49	53	61	63	64	49	48	50	52	53	54	46	42	40	40	46	46	53	39	37	33	32	48.0	
UPPER MARLBORO 3 NNW	08	MAX	78	53	51	57	70	74	72	74	75	83	82	70	65	74	70	70	72	72	73	70	61	63	61	66	70	68	70	65	52	41	54	67.0	
		MIN	53	44	42	45	48	44	43	44	46	47	51	59	63	64	47	46	50	50	51	52	42	39	36	37	41	43	54	36	36	32	28	45.6	
<b>NORTHERN EASTERN SHORE 05</b>																																			
CHESTERTOWN	23	MAX																																M	

DAILY TEMPERATURES (°F)

STATION	OB. TIME	MAX/MIN	DAY OF MONTH																															AVERAGE	
			01	02	03	04	05	06	07	08	09	10	11	12	13	14	15	16	17	18	19	20	21	22	23	24	25	26	27	28	29	30	31		
<b>NORTHERN CENTRAL 06</b>		MIN																																	M
ABERDEEN PHILLIPS FLD	07	MAX	77	60	48	54	67	74	70	70	74	83	81	71	63	68	69	71	69	72	73	72	63	61	59	63	65	67	63	63	49	38	51	65.4	
		MIN	53	46	42	43	45	47	43	43	45	47	52	61	61	62	56	49	49	48	51	60	47	42	39	39	43	46	47	39	38	34	29	46.6	
CATOCTIN MTN PARK	07	MAX	58	45	47	60	69	66	71	73	78	76	67	63	62	65	63	66	66	67	62	61	50	52	59	59	63	61	61	45	41	50	48	60.5	
		MIN	44	38	39	44	48	39	45	46	49	52	52	54	55	57	48	49	50	49	53	48	44	42	39	45	45	48	44	30	31	27	30	44.6	
CONOWINGO DAM	07	MAX	78	70	51	55	68	72	72	73	74	80	72	73	64	69	66	65	73	75	72	70	69	62	60	63	62	66	65	65	54		54	67.1	
		MIN	52	46	42	43	45	42	42	44	45	50	46	46	59	60	65	45	45	45	45	58	42	39	39	41	41	43	44	38	38		31	45.4	
CYLBURN	08	MAX	73	53	48	49	66	68	64	67	74	76	75	69	61	68	64	67	68	68	69	69	59	56	58	61	62	62	60	61	48	46	51	62.6	
		MIN	52	42	41	44	45	44	43	44	47	54	57	58	58	60	50	48	55	48	50	54	44	43	38	44	47	48	51	34	34	32	29	46.4	
DAMASCUS 3 SSW	22	MAX	56	48	47	64	70	66	70	72	77	76	68	62	67	67	67	69	68	70	64	62	54	55	61	61	63	60	60	46	39	45	51	61.5	
		MIN	45	43	40	44	51	44	46	48	49	53	55	60	60	56	51	49	55	50	57	51	45	42	39	46	47	49	43	34	32	28	33	46.6	
EMMITSBURG 2 SE	07	MAX	69	51	48	50	65	71	65	70	71	76	77	70	62	67	66	66	68	68	71	63	58	53	56	61	60	64	64	61	49	34	48	62.0	
		MIN	51	42	43	44	45	43	41	41	43	45	47	53	57	57	51	49	49	46	46	53	47	46	34	34	43	45	47	35	33	29	27	44.1	
FREDERICK 2 NNE	07	MAX	72	51	48	51	67	74	71	74	76	79	77	70	64	67	69	68	71	72	73	65	59	56	60	64	61	67	63	67	49	36	51	64.3	
		MIN	51	44	44	45	46	45	43	43	46	47	50	54	57	53	54	47	49	47	48	54	48	47	36	36	43	47	47	35	33	31	29	45.1	
MILLERS 4 NE	18	MAX	64	48	49	66	71	68	73	75	81	78	72	66	64	67	66	68	67	72	65	67	55	55	63	62	64	64	61	49	43	47	50	63.2	
		MIN	48	41	42	42	50	42	43	45	47	52	53	56	57	58	50	44	52	44	55	50	41	39	34	44	41	48	46	33	32	27	27	44.6	
SMITHSBURG 2NW	08	MAX	68	48	45	50	63	71	67	72	73	75	75	69	60	67	65	65	68	67	70	65	57	57	56	60	64	64	60				37	62.8	
		MIN	46	40	40	40	44	38	38	41	44	43	46	50	55	55	49	48	49	44	45	50	45	45	33	33	38	38	30			20	42.4		
WESTMINSTER	07	MAX																																M	
		MIN																																M	
<b>APPALACHIAN MOUNTAIN 07</b>																																			
CUMBERLAND 2	18	MAX	60	48	48	52	62	76	72	76	77	77	75	65	60	62	66	66	75	71	74	63	54	49	63	66	66	71	67	62	47	37	52	63.2	
		MIN	46	42	42	43	48	48	47	47	48	48	48	48	56	57	51	52	48	47	49	49	46	46	35	35	43	41	41	31	31	29	29	44.2	
FROSTBURG 2	07	MAX	58	42	39	47	53	66	66	70	73	77	77	64	54	59	57	58	67	62	69	56	45	42	56	60	62	62	59	55	41	35	47	57.4	
		MIN	40	36	35	38	47	45	43	46	46	47	50	49	51	53	43	44	42	42	43	43	39	39	34	34	43	43	50	29	28	26	26	41.1	
SHARPSBURG 5 S	07	MAX	71	48	47	52	66	73	68	73	75	77	72	67	62	68	68	67	71	71	72	66	60	54	59	63	62	67	62	61	49	35	47	63.0	
		MIN	48	42	42	42	45	42	41	41	45	44	48	54	57	57	46	40	41	41	45	51	44	44	35	34	39	38	50	31	30	24	24	42.1	
WILLIAMSPORT	06	MAX	71	51	48	53	65	76	70	74	75	78	75	71	61	63	69	68	71	72	73	66	61	54	61	64	64	69	66	60	49	36	51	64.0	
		MIN	51	43	43	43	42	47	44	44	45	47	49	50	56	57	51	46	46	45	46	52	50	46	37	37	44	43	45	37	33	30	29	44.5	
<b>ALLEGHENY PLATEAU 08</b>																																			
OAKLAND 1 SE	07	MAX	56	41	41	50	54	66	71	71	74	78	75	64	59	62	58	58	67	62	73	57	43	43	56	59	61	61	59	55	39	40	43	57.9	
		MIN	37	36	35	40	48	39	40	42	40	40	41	42	54	51	44	45	44	36	39	41	37	37	27	27	38	37	50	27	27	27	28	38.6	
SAVAGE RIVER DAM	08	MAX	61	46	43	51	57	66	65	68	70	72	73	65	57	60	61	60	71	62	68	59	49	49	56	59	64	60	62	58	40	34	46	58.5	
		MIN	44	41	40	42	51	47	45	44	44	45	45	45	55	55	44	49	46	41	43	46	43	43	32	32	42	38	38	31	30	30	29	41.9	
SINES DEEP CREEK	07	MAX	57	42	39	47	52	63	68		73	75	71	66	56	62	58	57	67	59	70	59	44	42	53	56	59	57	55	59	40	35	42	56.1	
		MIN	36	37	35	38	46	41	40		41	41	41	41	52	52	42	40	42	36	38	42	38	38	30	29	37	35	37	30	30	29	29	38.1	
<b>DELAWARE NORTHERN 01</b>																																			



# DAILY TEMPERATURES (°F)

STATION	OB. TIME	MAX/MIN	DAY OF MONTH																															AVERAGE	
			01	02	03	04	05	06	07	08	09	10	11	12	13	14	15	16	17	18	19	20	21	22	23	24	25	26	27	28	29	30	31		
BEAR 2 SW	24	MAX	64	52	54	66	73	69	69	74	83	79	73	63	69	74	69	69	70	71	69	70	59	60	62	65	65	66	63	51	45	50	55	65.2	
		MIN	52	48	46	42	49	41	41	44	47	51	56	60	61	57	56	54	47	44	59	56	41	38	36	40	41	41	43	34	34	31	27	45.7	
WILMINGTON NEW CASTLE CO AP	24	MAX	65	52	54	66	73	69	70	75	85	80	73	64	70	74	69	69	70	71	69	68	60	60	63	65	65	63	51	44	50	54	65.4		
		MIN	52	47	46	43	50	44	42	46	51	56	59	60	61	55	55	50	51	47	60	54	44	38	38	42	44	45	41	36	34	33	28	46.8	
WILMINGTON PORTER RES	24	MAX	63	51	54	63	70	64	65	72	79	77	77	62	67	73	66	66	66	70	69	70	57	57	60	64	61	64	63	48	44	47	54	63.3	
		MIN	50	46	45	45	50	47	48	50	57	61	62	58	59	55	51	50	54	49	58	54	46	41	42	45	44	48	41	37	33	32	32	48.1	
<b>SOUTHERN 02</b>																																			
DOVER	16	MAX	75	64	56	65	72	72	70	73	82	80	76	70	68	74	72	70	71	70	72	70	60	62	66	65	70	71	66	50	51	55	68.1		
		MIN	51	47	43	45	54	45	46	47	51	56	59	62	64	56	51	54	55	48	63	52	46	42	42	44	48	50	44	36	34	34	32	48.4	
LEWES	08	MAX			83																													M	
		MIN			43																														M

## SNOWFALL AND SNOW ON GROUND (INCHES)

STATION		DAY OF MONTH																																			
		01	02	03	04	05	06	07	08	09	10	11	12	13	14	15	16	17	18	19	20	21	22	23	24	25	26	27	28	29	30	31					
<b>MARYLAND</b>																																					
<b>SOUTHERN</b>																																					
<b>EASTERN SHORE 01</b>																																					
ASSATEAGUE	SNOWFALL																																				
PRINCESS ANNE	SNOWFALL																																				
SALISBURY 2N	SNOWFALL																																				
SALISBURY FAA AP	SNOWFALL																																				
SNOW HILL 4 N	SNOWFALL																																				
<b>LOWER SOUTHERN 03</b>																																					
MECHANICSVILLE 5 NE	SNOWFALL	-	-	-	-							-	-	-	-																					T	
SOLOMONS	SNOWFALL																																				
<b>UPPER SOUTHERN 04</b>																																					
BALTIMORE WASH INTL AP	SNOWFALL																																			T	
	SN ON GND																																				
BELTSVILLE R	SNOWFALL																																				
	SN ON GND																																				
DALECARLIA RSVR	SNOWFALL																																				
	SN ON GND																																				
	WTR EQUIV																																				
LAUREL 3 W	SNOWFALL																																				
MARYLAND SCIENCE CENTER	SNOWFALL																																				
NATL ARBORETUM DC	SNOWFALL	-	-	-	-																																
	SN ON GND	-	-	-	-	-	-	-	-	-	-	-	-	-	-	-	-	-	-	-	-	-	-	-	-	-	-	-	-	-	-	-	-	-	-	-	
OXON HILL	SNOWFALL		-	-																																	0.1
	SN ON GND	-	-	-																																	
UPPER MARLBORO 3 NNW	SNOWFALL																																				T
	SN ON GND																																				
<b>NORTHERN CENTRAL 06</b>																																					
ABERDEEN PHILLIPS FLD	SNOWFALL																																				T
	SN ON GND																																				T
BRIGHTON DAM	SNOWFALL	-																																			
CATOCTIN MTN PARK	SNOWFALL	-	-	-	-	-	-	-	-	-	-	-	-	-	-	-	-	-	-	-	-	-	-	-	-	-	-	-	-	-	-	-	-	-	-		
	SN ON GND	-	-	-	-	-	-	-	-	-	-	-	-	-	-	-	-	-	-	-	-	-	-	-	-	-	-	-	-	-	-	-	-	-	-	12.0	3.0
	WTR EQUIV	-	-	-	-	-	-	-	-	-	-	-	-	-	-	-	-	-	-	-	-	-	-	-	-	-	-	-	-	-	-	-	-	-	-	12	14
	WTR EQUIV	-	-	-	-	-	-	-	-	-	-	-	-	-	-	-	-	-	-	-	-	-	-	-	-	-	-	-	-	-	-	-	-	-	-	1.1	-
CONOWINGO DAM	SNOWFALL																																				
CYLBURN	SNOWFALL																																				
DAMASCUS 3 SSW	SNOWFALL	-	-	-	-	-	-	-	-	-	-	-	-	-	-	-	-	-	-	-	-	-	-	-	-	-	-	-	-	-	-	-	-	-	-	3.8	-
	SN ON GND	-	-	-	-	-	-	-	-	-	-	-	-	-	-	-	-	-	-	-	-	-	-	-	-	-	-	-	-	-	-	-	-	-	-	3	T
EMMITSBURG 2 SE	SNOWFALL																																				3.0
	SN ON GND																																				-
	WTR EQUIV																																				-
FREDERICK 2 NNE	SNOWFALL		-	-	-	-	-	-	-	-	-	-	-	-	-	-	-	-	-	-	-	-	-	-	-	-	-	-	-	-	-	-	-	-	-	-	0.5

Snowfall: Includes snow and ice. Values for NWS stations (J index note) are Mid-Mid (LST).

Snow on ground: Includes snow, sleet, ice, and hail. Values for NWS stations (J index note) are observed at 12 UTC (GMT).

Water Equivalent: Given for NWS stations (J index note) only, when snow depth is 2 inches or more, and is measured at 18 UTC (GMT)

## SNOWFALL AND SNOW ON GROUND (INCHES)

STATION		DAY OF MONTH																																
		01	02	03	04	05	06	07	08	09	10	11	12	13	14	15	16	17	18	19	20	21	22	23	24	25	26	27	28	29	30	31		
MILLERS 4 NE R	SNOWFALL																															5.9	0.2	
	SN ON GND																														6	2	T	
	WTR EQUIV																														1.0	0.7		
SMITHSBURG 2NW	SNOWFALL																											4.5	-	-	-	-		
	SN ON GND																											5	-	-	-	-		
WESTMINSTER	SNOWFALL																																	
<b>APPALACHIAN MOUNTAIN 07</b>																																		
CUMBERLAND 2	SNOWFALL	-	-	-	-	-	-	-	-	-	-	-	-	-	-	-	-	-	-	-	-	-	-	-	-	-	-	-	-	0.1	2.9	-		
	SN ON GND	-	-	-	-	-	-	-	-	-	-	-	-	-	-	-	-	-	-	-	-	-	-	-	-	-	-	-	-	-	2	-		
FROSTBURG 2	SNOWFALL	-	-	-	-	-	-	-	-	-	-	-	-	-	-	-	-	-	-	-	-	-	-	-	-	-	-	-	-	6.6	2.5	-		
	SN ON GND	-	-	-	-	-	-	-	-	-	-	-	-	-	-	-	-	-	-	-	-	-	-	-	-	-	-	-	-	7	7	3		
SHARPSBURG 5 S	SNOWFALL	-	-	-	-	-	-	-	-	-	-	-	-	-	-	-	-	-	-	-	-	-	-	-	-	-	-	-	-	-	-	3.0		
	SN ON GND	-	-	-	-	-	-	-	-	-	-	-	-	-	-	-	-	-	-	-	-	-	-	-	-	-	-	-	-	-	3	1		
WILLIAMSPORT	SNOWFALL																																	
	SN ON GND																																	
	WTR EQUIV																																	
<b>ALLEGHENY PLATEAU 08</b>																																		
OAKLAND 1 SE	SNOWFALL																														5.8			
	SN ON GND																													5	3			
SAVAGE RIVER DAM	SNOWFALL																																	
SINES DEEP CREEK	SNOWFALL	-	-	-	-	-	-	-	-	-	-	-	-	-	-	-	-	-	-	-	-	-	-	-	-	-	-	-	-	3.0	2.0	-		
	SN ON GND	-	-	-	-	-	-	-	-	-	-	-	-	-	-	-	-	-	-	-	-	-	-	-	-	-	-	-	-	-	5	-	-	
<b>DELAWARE NORTHERN 01</b>																																		
BEAR 2 SW	SNOWFALL																															0.3		
	SN ON GND																																	
NEWARK UNIV FARM R	SNOWFALL																																	
WILMINGTON NEW CASTLE CO AP	SNOWFALL																															0.3		
	SN ON GND																																	
WILMINGTON PORTER RES	SNOWFALL																																1.3	
	SN ON GND																																	

Snowfall: Includes snow and ice. Values for NWS stations (J index note) are Mid-Mid (LST).

Snow on ground: Includes snow, sleet, ice, and hail. Values for NWS stations (J index note) are observed at 12 UTC (GMT).

Water Equivalent: Given for NWS stations (J index note) only, when snow depth is 2 inches or more, and is measured at 18 UTC (GMT)

PAN EVAPORATION AND WIND

STATION		DAY OF MONTH																															TOTAL OR AVERAGE	
		01	02	03	04	05	06	07	08	09	10	11	12	13	14	15	16	17	18	19	20	21	22	23	24	25	26	27	28	29	30	31		
MARYLAND UPPER SOUTHERN 04 BELTSVILLE	WIND	76	89	49	20	60	56	16	15	10	12	9	44	58	38	80	82	10	29	34	91	120	58	19	22	29	46	23	74	61	93	36	1459	
	EVAP	0.18	0.05	0.03	0.03	0.12	0.16	0.12	0.12	0.13	0.12	0.07	0.08	0.06	0.12	0.15	0.21	0.22	0.13	0.12	0.01	0.18	0.12	0.02	0.10	0.06	0.13	0.03	0.05	0.07	0.03	0.07	3.09	
	MAX	55	55	54	55	71	76	76	78	79	82	81	72	65	72	72	70	70	73	73	68	63	63	58	65	67	69	59	63	54	40	56	67.0	
	MIN	51	44	43	43	46	50	49	49	52	53	56	60	61	60	48	46	45	52	52	57	43	42	48	40	45	45	46	38	37	33	33	47.3	
UPPER MARLBORO 3 NNW	WIND	-	-	-	-	-	-	-	-	-	-	-	-	-	-	-	-	-	-	-	-	-	-	-	-	-	-	-	-	-	-	-	M	
	EVAP	-	-	3.50	3.48	3.39	3.26	3.16	-	-	2.87	-	2.72	-	3.08	-	-	3.01	2.90	3.04	3.12	2.98	-	-	2.26	2.28	-	-	2.20	-	-	-	47.25	
	MAX	57	57	54	62	73	78	77	78	79	82	81	70	65	75	71	69	70	74	72	67	63	65	59	67	68	68	64	63	55	41	55	67.7	
	MIN	55	47	45	45	50	53	51	51	53	53	57	62	63	64	50	47	47	54	54	56	44	44	42	42	46	48	49	39	39	35	35	49.0	
ALLEGHENY PLATEAU 08 SAVAGE RIVER DAM	WIND	-	-	-	-	-	-	-	-	-	-	-	-	-	-	-	-	-	-	-	-	-	-	-	-	-	-	-	-	-	-	-	M	
	EVAP	-	-	-	-	-	-	-	-	-	-	-	-	-	-	-	-	-	-	-	-	-	-	-	-	-	-	-	-	-	-	-	M	
	MAX	-	-	-	-	-	-	-	-	-	-	-	-	-	-	-	-	-	-	-	-	-	-	-	-	-	-	-	-	-	-	-	-	M
	MIN	-	-	-	-	-	-	-	-	-	-	-	-	-	-	-	-	-	-	-	-	-	-	-	-	-	-	-	-	-	-	-	-	M

Evaporation: Is measured in hundredths of inches.

Wind: Is measured in miles.

Max and Min: The maximum and minimum temperatures (Fahrenheit) of the water in the evaporation pan.

# STATION INDEX

STATION	INDEX NO.	DIVISION	COUNTY	LATITUDE	LONGITUDE	ELEVATION (IN FEET)	OBSERVATION TIME AND TABLES			
							LOCAL STD TIME			
							TEMP	PRECIP	EVAP	SPECIAL SEE (NOTES)
MARYLAND										
ABERDEEN PHILLIPS FLD R	0015	06	HARFORD	39 28	76 10W	57	07	07		CH
ASSATEAGUE	0335	01	WORCESTER	38 4	75 13W	10	24	24		H
BALTIMORE WASH INTL AP R	0465	04	ANNE ARUNDEL	39 10	76 41W	156	24	24		CHJ
BELTSVILLE R	0700	04	PRINCE GEORGE'S	39 2	76 56W	145	08	08	08	CH
BRIGHTON DAM	1125	06	MONTGOMERY	39 11	77 0W	330		07		H
CATOCTIN MTN PARK	1530	06	FREDERICK	39 39	77 29W	1610	07	07		H
CHESTERTOWN	1750	05	KENT	39 13	76 3W	40	23	23		H
CONOWINGO DAM	2060	06	HARFORD	39 39	76 11W	40	07	07		H
CUMBERLAND 2	2282	07	ALLEGANY	39 39	78 45W	730	18	18		H
CYLBURN	2308	06	BALTIMORE	39 21	76 39W	235	08	08		H
DALECARLIA RSVR	2325	04	PRINCE GEORGE'S	38 56	77 6W	150	08	08		H
DAMASCUS 3 SSW	2336	06	MONTGOMERY	39 15	77 13W	700	22	22		H
EMMITSBURG 2 SE	2906	06	FREDERICK	39 41	77 17W	403	07	07		H
FREDERICK 2 NNE	3353	06	FREDERICK	39 26	77 24W	280	07	07		H
FROSTBURG 2	3415	07	ALLEGANY	39 40	78 56W	2170	07	07		H
LAUREL 3 W	5111	04	PRINCE GEORGE'S	39 5	76 54W	400	24	24		H
MARYLAND SCIENCE CENTER R	5718	04	BALTIMORE (CITY)	39 17	76 37W	20	24	24		CH
MECHANICSVILLE 5 NE	5865	03	ST. MARY'S	38 28	76 42W	100	07	07		H
MILLERS 4 NE R	5934	06	CARROLL	39 43	76 48W	860	18	18		CH
NATL ARBORETUM DC	6350	04	DISTRICT OF COLUMBIA	38 55	76 58W	50	07	07		H
OAKLAND 1 SE	6620	08	GARRETT	39 25	79 24W	2420	07	07		H
OXON HILL	6800	04	PRINCE GEORGE'S	38 47	76 60W	120	08	08		H
PRINCESS ANNE	7330	01	SOMERSET	38 13	75 41W	20	17	17		H
ROYAL OAK 2 SSW	7806	02	TALBOT	38 43	76 11W	10	17	17		H
SALISBURY 2N	8004	01	WICOMICO	38 24	75 36W	20	17	17		H
SALISBURY FAA AP	8005	01	WICOMICO	38 20	75 31W	48	24	24		H
SAVAGE RIVER DAM R	8065	08	GARRETT	39 31	79 8W	1495	08	08	08	CH
SHARPSBURG 5 S	8207	07	WASHINGTON	39 24	77 43W	500	07	07		H
SINES DEEP CREEK	8315	08	GARRETT	39 31	79 25W	2040	07	07		H
SMITHSBURG 2NW	8371	06	WASHINGTON	39 40	77 35W	670	08	08		H
SNOW HILL 4 N	8380	01	WORCESTER	38 14	75 23W	30	17	17		H
SOLOMONS	8405	03	CALVERT	38 19	76 27W	12	08	08		H
UPPER MARLBORO 3 NNW	9070	04	PRINCE GEORGE'S	38 51	76 46W	130	08	08	08	H
WESTMINSTER	9440	06	CARROLL	39 34	76 59W	765	07	07		H
WILLIAMSPORT	9570	07	WASHINGTON	39 36	77 50W	360	06	06		H
DELAWARE										
BEAR 2 SW	1200	01	NEW CASTLE	39 36	75 44W	80	24	24		H
DOVER	2730	02	KENT	39 15	75 31W	30	16	16		H
LEWES	5320	02	SUSSEX	38 47	75 8W	15	08	08		H
WILMINGTON NEW CASTLE CO AP R	9595	01	NEW CASTLE	39 40	75 36W	79	24	24		CHJ
WILMINGTON PORTER RES	9605	01	NEW CASTLE	39 46	75 32W	270	24	24		H

# REFERENCE NOTES

**STATION NAMES:** Name of the city, town or locality. Figures and letters following the station names indicate the distance in miles and direction from the post office or town community center.

**DIVISIONS:** Areas within a state of similar climatological characteristics. Division averages are calculated using data from stations that record both temperature and precipitation (i.e. not precipitation alone).

**NORMALS:** The average value of the meteorological element over a time period. Effective 1 January 2002, the averaging period is 1971 to 2000. The normals for National Weather Service localities have been adjusted so as to be representative for the current observation site.

**MONTHLY DEGREE DAY TOTALS:** One heating (cooling) degree day is accumulated for each whole degree that the daily mean temperature is below (above) 65 degrees Fahrenheit.

**PRECIPITATION:** Values shown in hundredths of inches are water equivalent totals, i.e., total of liquid and melted frozen precipitation. In the "Monthly Summarized Data" table the total snow and sleet values shown in tenths of inches are unmelted amounts. The max depth on ground values of snow and sleet shown in whole inches are cumulative unmelted amounts. The number of days with .10, .50, 1.00 or more refers to water equivalents.

**PRECIPITATION QUALITY CONTROL:** The NCDC quality control process may flag precipitation data that are spatially inconsistent, exceed climatological limits, or are inconsistent with prevailing weather patterns.

**TEMPERATURE:** Original temperature values are given in the "Daily Temperature" table. Summary temperature information (averages, departures, extremes, monthly degree day totals) is based on the values labeled MAX/MIN.

**WIND:** (As shown in the "Evaporation and Wind" table) the total wind movement in miles over the evaporation pan as determined by an anemometer recorder located 6-8 inches above the pan.

## SYMBOLS AND LETTERS USED IN THE STATION INDEX TABLE

- C Station is equipped with recording rain gage (R) but values in this bulletin are from a non-recording rain gage unless indicated by an R.
- G Observations appear in the "Soil Temperatures" table.
- H Observations appear in the "Snowfall and Snow on the Ground" table.
- J Station also published as a Local Climatological Data publication.
- VAR Observation time varies.
- SR Observation time near sunrise.
- SS Observation time near sunset.

## SYMBOLS AND LETTERS USED IN THE DATA TABLES

(DAILY DATA ARE FOR THE 24 HOURS IMMEDIATELY PRECEDING OBSERVATION TIME.)

**BLANK** Entries in the "Monthly Summarized Data" table indicate no record.

**BLANK** Entries in the "Daily Precipitation" and "Snowfall and Snow on the Ground" tables indicate zero.

**BLANK** Entries in the "Daily Temperature" table indicate a missing record

- No record. Data not recorded or not received in time for publication.

+ Precipitation or temperature extremes occurred on one or more previous dates during the month.

\* Rain gage not read. Precipitation is included in the amount following the asterisks. Time distribution may not be known. A \* preceding the monthly total indicates precipitation amount is being carried forward to next month's total, and may include amounts from the previous month(s).

a As a subscript, indicates accumulated total.

A Amount of precipitation is the total of observer's entries for the current month. It may include precipitation that occurred during the previous month. Refer to earlier bulletin to determine date of last reading. (Hawaii stations)

F Monthly calculation flagged value. F is appended to average and/or total values computed which exclude one or more daily data values that have been flagged by the GHCN-Daily Dataset

g Indicates there were no stations reporting within climate division.

Spatial interpolation based on stations in surrounding climate divisions was used to estimate the divisional value.

M Insufficient or partial data. M is appended to average and/or total values computed with 1-9 daily values missing. M appears alone if 10 or more daily values are missing, (8 or more for wind and evaporation).

N Indicates snow fall or Snowdepth totals are computed with one or more missing days.

R Amounts from recording rain gage.

T Trace. An amount too small to measure.

**SEASONAL TABLES:** Monthly and seasonal snowfall and heating degree days for the 12 months ending with the June data are published in the July issue of this bulletin. Cooling degree days for the calendar year are published in the "Climatological Data Annual Summary."

Information concerning the history of changes in locations, exposure, etc. of substations is kept on file at the National Climatic Data Center. Historical information of regular National Weather Service Offices may be obtained from the "Local Climatological Data" annual publication. The contents of this publication may be reprinted or otherwise used freely, with proper credit to the National Climatic Data Center. The data are also available digitally.

Effective with the January 2011 Data-Month, COOP Observer Names are no longer included in the Monthly and Annual Climatological Data Publications. This information is not published to ensure the privacy of personal information pursuant to Section 208 of the E-Government Act of 2002 (44 USC 3601).

The GHCN-Daily Quality Control Flags shown below are displayed as superscripts with the data. For more information on Global Historical Climatology Network - Daily and flags, see:

<http://www.ncdc.noaa.gov/oa/climate/ghcn-daily/>  
and

Comprehensive Automated Quality Assurance of Daily Surface Observations.

Durre, Imke, Matthew J. Menne, Byron E. Gleason, Tamara G. Houston,

Russell S. Vose, 2010: J. Appl. Meteor. Climatol., 49, 16151633.

doi: 10.1175/2010JAMC2375.1

Blank = Passed All checks

D = failed duplicate check

G = failed gap check

I = failed internal consistency check

K = failed streak/frequent-value check

L = failed check on length of multiday period

M = failed megaconsistency check

N = failed naught check

O = failed climatological outlier check

R = failed lagged range check

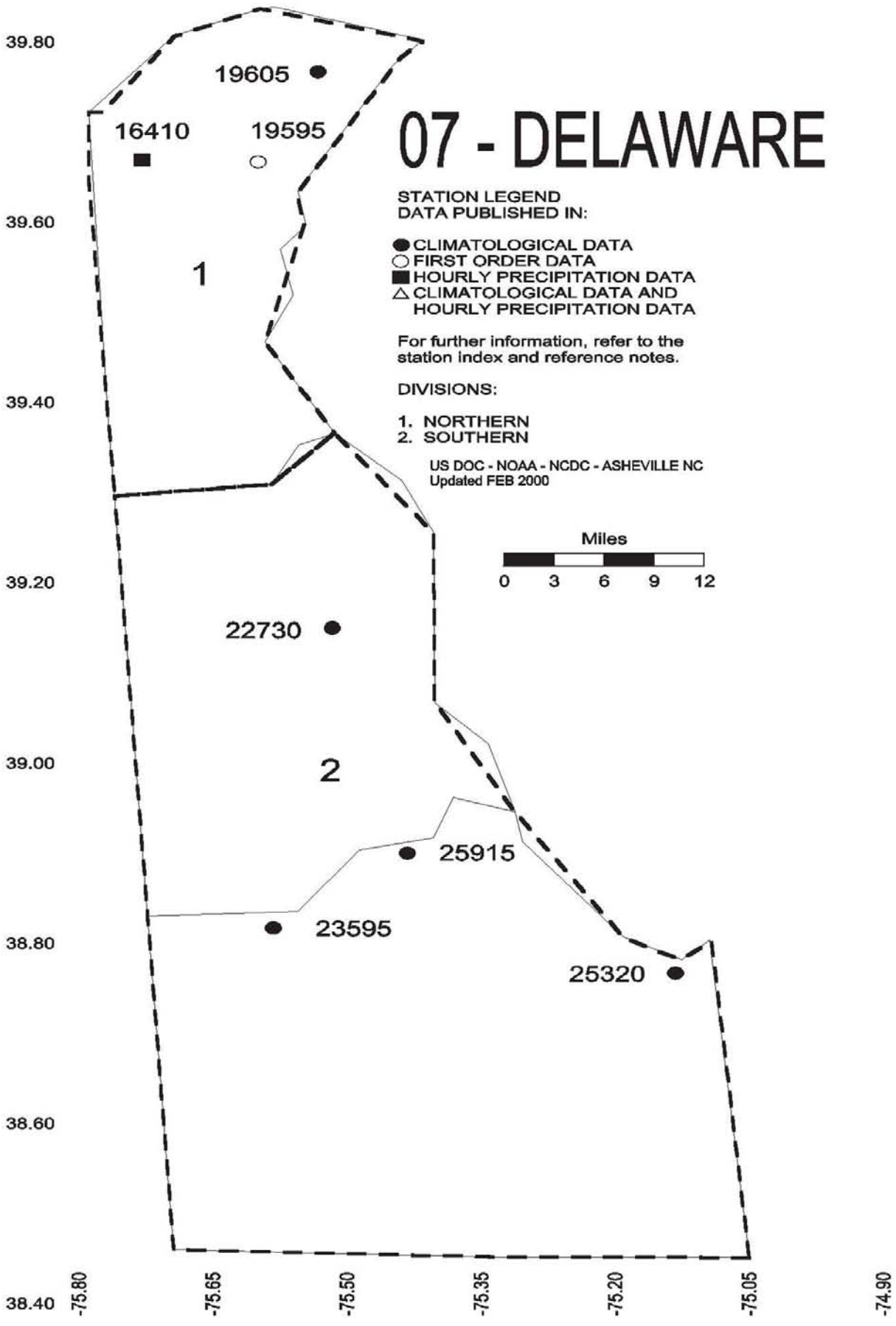
S = failed spatial consistency check

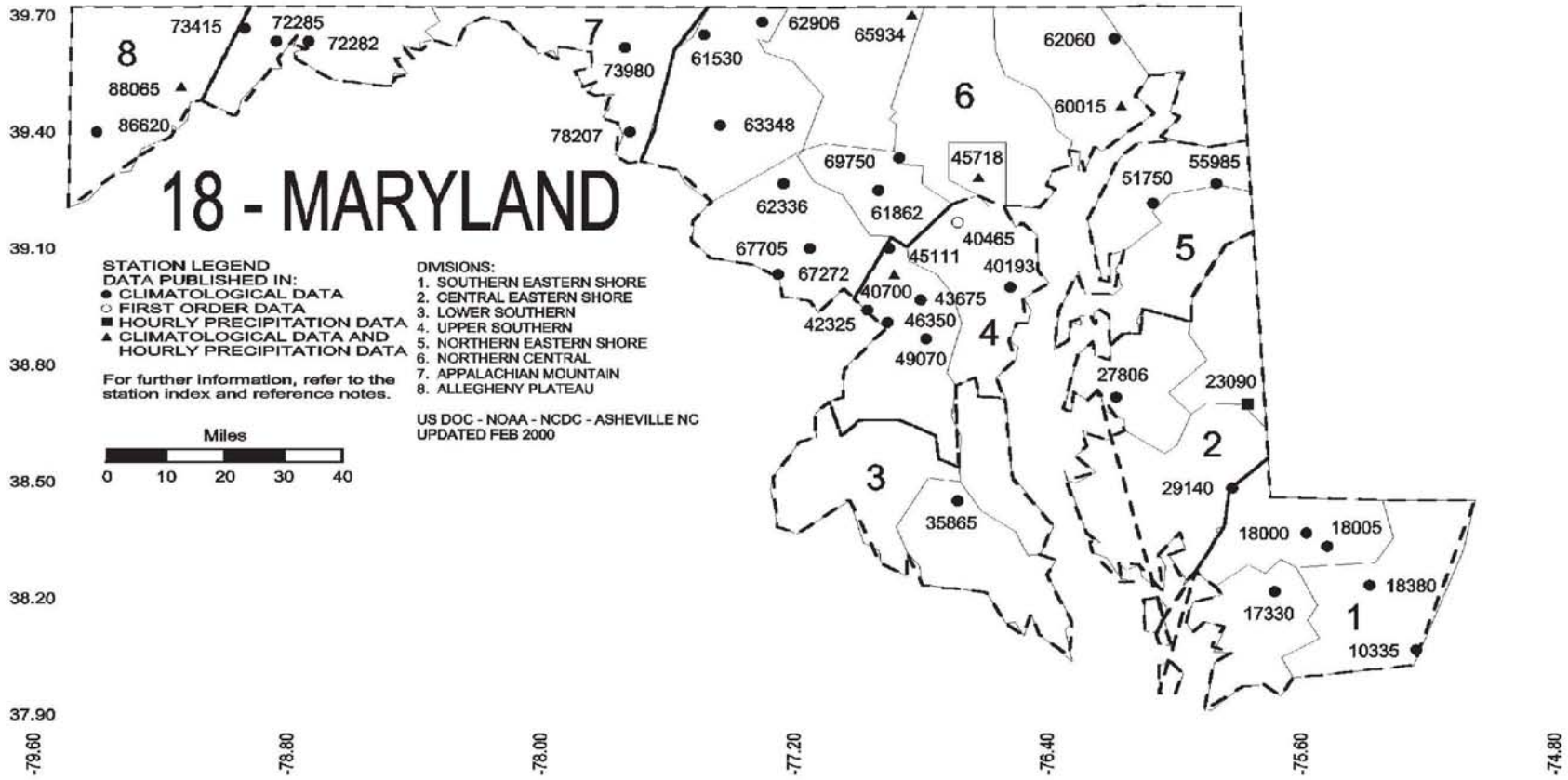
T = failed temporal consistency check

W = temperature too warm for snow

X = failed bounds check

# 07 - DELAWARE







NOAA\National Climatic Data Center  
Attn: User Engagement & Services Branch  
151 Patton Avenue  
Asheville, NC 28801-5001

Customer Services Number: (828) 271-4800, option 2  
TDD : (828) 271-4010  
Fax number: (828) 271-4876

NCDC now offers free online access to the *Climatological Data* publication.  
Go to : [www.ncdc.noaa.gov](http://www.ncdc.noaa.gov) and choose Most Popular.