



<http://www.jhuapl.edu/weather/education/ACONdata.html>

ATLANTIC COAST OBSERVER NETWORK, MD / DE / DC CHAPTER WITH DATA FROM NEARBY AREAS

EXTREME HEAT ABATES SCATTERED STRONG STORMS

August temperatures averaged above normal, but the heat was more typical for a warm August. As with July, the minimum temperatures rarely dropped below the 60° mark. Showers and thunderstorms brought ample amounts of rain to many but not all locations. There were numerous daily amounts over one inch. Rainfall totals ranged from less than three inches to over ten inches. No tropical storms affected the region this month.

The hottest period was the first nine days. Maximum temperatures were generally in the upper 80's to mid 90's with the highest temperatures in the southern areas. Temperatures during this period peaked around the 5th in the mid ninety's. The only 100° occurred on the 5th at **Joe Manfre's** urban **Baltimore 2 SE** station.

Following are some notable storm events which occurred during the first 9 days. An intense thunderstorm, which may have been a downburst, occurred at **Jeff Stoudt's Laurel 2 E** station on the 2nd. The only strong thunderstorms in New Castle County DE this month occurred on the 5th. The greatest amount of 1.39" was reported by **David Legates of Middletown 6 N DE**. **Ron Berger of Norbeck 1 SE** had a thunderstorm on the 9th with 12 minutes of hail. The largest stone was 7/8" in diameter. Pictures on page 4.

Numerous thunderstorms on the 10th brought one inch plus amounts to many stations. **Marty Brumback of Bryans Road 2 ESE**, reported 2.39", **Roy Lamberton of West Seaford DE**. 2.06", and **Greg Keefer of Hagerstown 1 E** 1.97".

"More seasonable" temperatures occurred from 11th to the 30th. This allowed **John Zyla of Ridge** to turn off his air conditioner and open his windows from the 19th to the 26th.

Evening thunderstorms occurred on the 14th. **Marty Sharrow of Owings Mills 2 SE** reported 2.51" and **Ray Muller of Reisterstown** 1.19". A possible Ball

Lightning sighting was reported near Finksburg. See page 3 for more details.

The coolest maximum temperatures occurred from the 18th to the 21st. Upper 70's to low 80's were common. The first sub 60° minimum temperatures since June occurred on the 19th at some stations in the northern half of the region.

Training rain events on the 25th and 26th brought heavy flash flooding rains to two regions. The first one occurred the night of the 25th and morning of the 26th in eastern Sussex County DE southwards along the coast to Virginia. **U of D DEOS Harbeson 8 S DE** reported 6.83" of rain with 1.17", 1.58", & 1.95" falling in three consecutive pre-dawn hours of the 26th. **U of D DEOS Rehoboth Beach** reported 6.10" with 1.54" & 1.92" falling during two consecu-

EXTREMES REPORTED BY

ACON OBSERVERS

MAXIMUM TEMPERATURE

Baltimore 2 SE	101
West Seaford DE	97
Bryans Road 2 ESE	97

MINIMUM TEMPERATURE

Davis 3 SE WV	46
Frostburg	51
LaVale	54

WARMEST AVG. TEMP.

Baltimore 2 SE	82.8
Ridge	79.1
West Seaford DE	78.9

COLDEST AVG. TEMP.

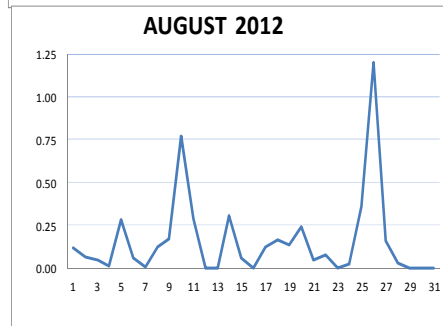
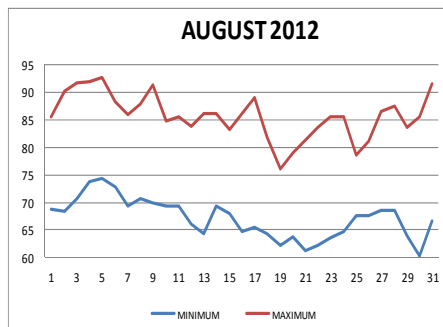
Davis 3 SE WV	64.5
Frostburg	68.1
LaVale	73.0

MAXIMUM PRECIPITATION

UofD DEOS Harbeson 8S DE	10.61
UofD DEOS Rehoboth Bch DE	9.35
Owings Mills 2 SE	9.07

MINIMUM PRECIPITATION

Davis 3 SE WV	2.15
Frostburg	2.43
Forest Glen	2.78



ACON MD/DE Network

Daily average temperatures and precipitation based on observation times, not calendar days.

five hours on the 25th. The other heavy training rain occurred along the Chesapeake Bay north to the MD/PA line. ACON observers **Marty Sharrow of Owings Mills** reported 4.21", **John Zyla of Ridge** 3.05", **Dan Hanson of Pasadena 2 N** 2.86", and **Jug Bay Wetlands of Lothian** 2.62". A waterspout was reported on the Potomac River near Cobb Island, Charles County.

The month ended hot with temperatures ranging from near 90 in the extreme north to the mid 90's in the southern areas on the 31st.

OBSERVER COMMENTS FOR AUGUST 2012

Gary Gallaher of Bear 2 SW, DE

Summer 2012 average temp 75.1°, 15th hottest of 46. Precip 14.70", 11th wettest of 44.

Typical August humidity without extreme heat. Winds were the lightest since 2009.

5th - Strong thunderstorm.

31st - Dense fog with visibility reduced to a few hundred feet around sunrise,

David Legates of Middletown 6N, DE

At least we got some rain this month but is too late for Kent and Sussex County farmers.

Nate Mullins of LaVale

The stifling heat from July finally faded in August. Temperatures were slightly above normal for the 10th consecutive month.

9th - Severe thunderstorm blew up directly overhead around 1:30 PM. Heavy downpours, frequent lightning, some hail and high winds also reported. Quarter size hail and flash flooding reported 2 to 3 miles NE around Corriganville.

26th - Daily record rainfall of 1.97". Old record 0.54" in 2003.

Jeff Stoudt of Laurel 2 E

This August provided favorably distributed rainfall which totaled slightly above normal. The frequent rains contributed toward blunting the heat of July, but it was still a very warm and muggy August. Thunderstorms were numerous.

2nd - Intense thunderstorm 1415-1500. Had 20 minutes of torrential rain and winds which rivaled the 29 June derecho in velocity and only caused minor damage in the immediate vicinity. This high wind event in all likelihood was a microburst.

Marty Sharrow of Owings Mills

3rd - Hazy sun giving way to billowing clouds.

14th - Warm & humid. Pounding evening storms 2.51" of rain.

26th - Very unsettled, frequent training storms, heavy rains, 4.21" of rain, flooding occurred in nearby Jones Falls.

Joe Manfre of Baltimore 2SE

5th - Very hot, humid, light afternoon & evening t'storms.

11th - Strong evening thunderstorm. 1.61" of rain today.

Ralph Hartsock of Westminster 4 SSE

4th - Gusty PM thunderstorm, 49 mph wind gust.

14th - Late evening heavy thunderstorms.

Bobby Miller of Millers 4 NE

28th - Morning shower, PM scattered CU - beautiful!

Marty Brumback of Bryans Road 2 ESE

The heat continues but starts to abate. Had ten 90° days. The only sign that cooler weather is to come was the 63° minimum on the 30th.

Eric Glass of Emmitsburg 2 SE

Fog of different visibilities occurred at obs times on 11 days:

2nd, 3rd, 4th, 9th, 15th, 17th, 18th, 21st, 23rd, 25th, & 31st.

Ron Berger of Norbeck 1 SE

9th - Hail storm 7:15 PM to 7:27 PM. The largest stone was 7/8" in diameter. Most stones were around 1/2" in diameter.

Rob Cohen of Potomac 4 N

Temperatures 1.2° above normal, rain 2.03" above normal. Several days with thunder but no strong storms. Four days with over 1" of rain.

8th - Heavy rain 9 - 10 AM.

22nd - Heavy rain 6 - 7:30 PM.

Rich Giannola of Olney 1 S

9th - Evening thunderstorms. Pea size hail 7:32 - 7:36PM.

Richard Holden of Clarksburg 2 ENE

Thunder reported on eight days: 1st, 5th, 8th, 9th, 14th, 19th, 20th, & 26th.

Alexander McGinnis of Rockville 2 W

16th - FROPA yields beautiful sunny day.

21st - Light fog at sunrise, particularly in low lying areas.

Kevin Shaw of Gaithersburg 2 WNW

A bit of a different pattern this month: 1.) wetter than normal (7th wettest of 34) and 2.) the average maximum temp was 0.6° below normal. Minimum temps 3.0° above average. This was the first August in 34 years of records with no minimums below 60°. 15 days with measurable rain set a record for August.

Joe Terry of Forest Glen

There was a noticeable cool-down between the first and second halves of the month. There were no minimums in the 70's after the 14th.

31st - Last day of meteorological summer. Hottest day of the month, however moderate humidity made the day tolerable.

Brian Smith of Oxon Hill

5th - Dissipating -TSRA.

26th - +TSRA 1600-1630 0.52". +SHRA 1810-1820 0.14".

Wes Gleason of Hollywood 3 ENE

13th - 69°, 1st time below 70° since June 28th.

John Zyla of Ridge

2nd - Clear and pleasant. A massive TS sat over the Potomac River off Pt. Lookout this afternoon for hours, never moving with lots of thunder heard, but no rain.

26th - Four t'storms between 2:35 AM & 8:10 PM with some additional light rain after 8:10 PM. Total rain 3.05".

Max Hutto of Smithsburg 1.5 SW

3rd to 5th - Hot, humid, heat index 102° to 104°.

10th - Overnight TS, sunny, humid, windy PM TS. 1.97" day rain total.

31st - Sunny, hot, breezy.

Greg Kefer of Hagerstown 1 E

Summer of 2012 average temp 74.7°, 12th hottest since 1898. Hottest is 77.7 set in 2010.

10th - Intense TS between 5:30 PM & 6:0 PM began with ominous dark clouds and sharp close lightning and strong winds gusting to 35 MPH. Very heavy rain with over an inch falling in 20 minutes. 0.45" fell in 5 minutes.

Jim Vaughn of Smithsburg 2 NE

2nd to 5th - Heat index 100° to 104°.

4th - Record max min temp of 75°.

Compiled by Gary Gallaher, MD/DE ACON Data Collector and Report Writer, from data received from dedicated observers. Without your observations each month this report will not be possible.

AUGUST 2012 MD/DE/DC ACON REPORT

Possible Ball Lightning Sighted near Finksburg, MD August 14th

ACON member **Herb Close** of **Manchester 1 SW** reported that his Mother may have seen ball lightning. Below is an excerpt from his email and a newspaper article:

Last night around 9:00pm, Tuesday night August 14, 2012 during very intense thunderstorms occurring at Finksburg 2 NW in east central Carroll County, Maryland, my mom was looking out at the large bay window in the living room of her house. Mom told me that she saw lots of sheet lighting, then as she looked up in the sky she saw a large white translucent ball or sphere about 8 feet in diameter go horizontally across the NW sky from SW to N just above the roofs. For a second she had to stop and think if she really saw something. But then she realized that she did see something that she had never seen before. She had no idea what it was, but she knows she saw it. Mom said that the storms last night were the worst and most intense she had seen in a long time. Some of the most intense storms she had ever seen. The lightning she said was almost continuous.



© Carroll County Times

August 26th flash flooding in Western Baltimore County

Below are two pictures **Herb Close** of **Manchester 1 SW** took of the flooding.



Black Rock Road, Maryland Route 88, between Hampstead and Butler, MD.



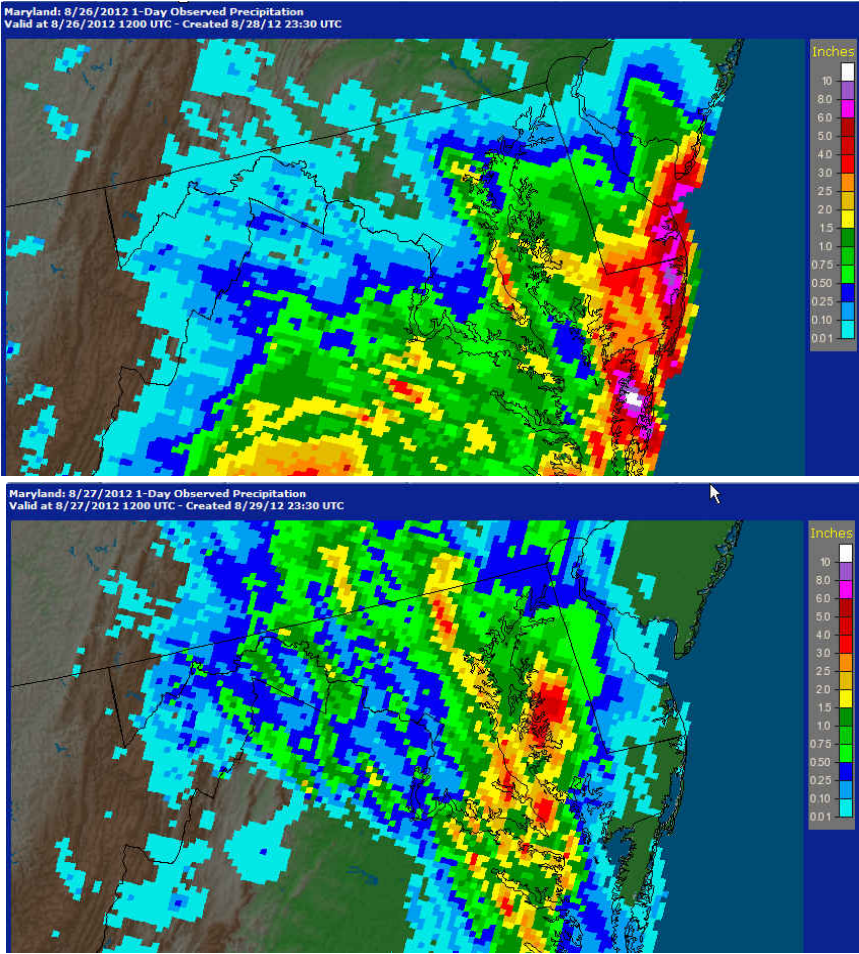
Mt Zion Road southeast of Hampstead, MD

AUGUST 2012 MD/DE/DC ACON REPORT



August 9th hail stones which fell during an evening thunderstorm. The largest stone was 7/8" in diameter. Most stones were around 1/2" in diameter.

The four pictures to the left were submitted by **Ron Berger of Norbeck**



To the left are two radar estimations of precipitation which fell over Maryland and Delaware August 25th - 27th.

The top picture is for the 24 hours ending 8/26/12 at 1200 UTC (8 AM EDT). Upwards of 8 inches fell in eastern Sussex County DE and upwards of 10 inches fell west of Ocean City, MD. Also shown is the beginnings of the heavy rains which fell along the western shore of the Chesapeake Bay to north of Baltimore.

The bottom picture is for the 24 hours ending 8/27/12 at 1200 UTC (8 AM EDT). It shows the heavy rains which fell along the western shore of the Chesapeake Bay northwards into PA. Heavy rains also fell on Maryland's Eastern Shore east of Annapolis.

**ACON MD / DE / DC
AUGUST 2012 SUMMARY**

OBSERVER	STATION COUNTY, STATE	TEMPERATURE									PEAK WIND			PRECIPITATION					SNOWFALL				OBS TIME ****	
		AVG MAX	AVG MIN	MEAN	MAX	DAY	MIN	DAY	MAX >=90	MAX <=32	MIN <=32	GUST	DIR	DAY	TOTAL	MAX DAY	DATE	YEAR	DAYS >=.01"	DAYS >=1"	TOTAL	MAX DAY		DATE
<i>New Castle, Delaware</i>																								
Gallaher, Gary	Bear 2 SW	85.0	66.0	75.5	93	5	58	30	3	0	0	40	WNW	5	4.10	1.21	5	25.07	12	1	0.0	0.0	0.0	2400
Legates, David	Middletown 6 N	85.5	66.8	76.2	93	5	59	30	4	0	0	24		5	4.03	1.39	5	24.87	14	1				2400
NWS Wilmington	New Castle Co. Apt.	85.5	67.3	76.4	94	5	59	30	5	0	0	36	W	14	2.81	0.75	5	19.87	11	0	0.0	0.0	0.0	2400
UofDE AG FARM DEOS***	Newark	84.8	66.2	75.5	92	5	59	19	4	0	0	21		5	4.89	1.02	14	22.69	12	1				2400
U of D REC DEOS***	Townsend 4 W	84.6	66.1	75.4	94	3	59	19+	5	0	0	47		3	5.71	1.52	3	21.61	14	1				2400
<i>Sussex, Delaware</i>																								
Lamberton, Roy	West Seaford	88.8	68.9	78.9	97	9	57	17	15	0	0	40		10	5.53	2.06	10	14.85	11	2				2400
NWS Georgetown	Sussex Co. Airport	86.2	69.3	77.8	93	3	63	19	7	0	0	36	W	10	6.30	1.66	10	20.59	12	3				2400
U of D REC DEOS***	Georgetown 5 SW	84.5	67.2	75.9	93	3	59	19	4	0	0	32		10	4.93	1.77	10	19.87	9	3				2400
U of D REC DEOS***	Harbeson 8 S	83.9	66.6	75.3	92	5	59	19	3	0	0	24		9	10.61	4.83	26	26.79	10	4				2400
U of D DEOS***	Rehoboth Beach Bwk	M	M		92	31	M					25		25	9.35	5.32	25	26.29	13	2				2400
<i>Allegany, Maryland</i>																								
Latta, Greg	Frostburg	78.4	57.7	68.1	86	4	51	21+	0	0	0				2.43	0.75	10	27.33	12	0	0.0	0.0	0.0	0700
Mullins, Nate**	LaVale	83.5	62.5	73.0	92	31	54	30	3	0	0				4.93	1.97	26	26.09	11	1	0.0	0.0	0.0	2400
<i>Anne Arundel, Maryland</i>																								
Hanson, Dan	Pasadena 2 N	87.1	67.3	77.2	95	5	60	22	8	0	0	30	W	5	4.69	2.86	26	21.34	16	1	0.0	0.0	0.0	2400
Jug Bay Wetlands	Lothian	87.8	66.4	77.1	96	31	60	22	11	0	0	17		2	4.25	2.62	26	23.33	14	1	0.0	0.0	0.0	2400
NWS Baltimore	BWI Airport	87.0	67.6	77.3	96	5	61	21+	8	0	0	44	W	5	5.82	3.36	26	22.47	13	1	0.0	0.0	0.0	2400
Stoudt, Jeff	Laurel 2 E	85.2	69.1	77.2	93	31	62	21	6	0	0				4.47	1.36	2	23.43	14	1	0.0	0.0	0.0	2400
<i>Baltimore, Maryland</i>																								
Muller, Ray	Reisterstown	84.9	67.5	76.2	93	4+	59	21	5	0	0	29	WSW+	5+	4.77	1.65	26	24.34	9	2	0.0	0.0	0.0	2100
Sharrow, Marty	Owings Mills 2 SE	85.3	65.6	75.5	94	9	59	19+	7	0	0				9.07	4.21	26	26.95	9	2	0.0	0.0	0.0	2400
<i>Baltimore City, Maryland</i>																								
Manfre, Joe	Baltimore 2 SE	90.8	74.8	82.8	101	5	68	21	22	0	0				6.36	3.41	26	18.51	12	2	0.0	0.0	0.0	2400
Maryland Science Ctr	Baltimore Inner Harbor	90.1	74.5	82.3	99	5	67	21	19	0	0				5.89	3.37	26	23.75	12	2				2400
<i>Carroll, Maryland</i>																								
Close Jr, Herb	Manchester 1 SW	84.3	65.3	74.8	91	3+	56	21	4	0	0				3.09	0.78	26	26.91	13	0	0.0	0.0	0.0	2300
Hartsock, Ralph	Westminster 4 SSE	86.5	66.1	76.3	96	2	59	21	4	0	0	49		4	3.86	1.16	15	28.25	9	2	0.0	0.0	0.0	1900
Miller, Bobby	Millers 4 NE	83.5	62.9	73.2	91	3	55	19	2	0	0	41	WSW	5	5.03	1.92	26	29.60	15	1	0.0	0.0	0.0	1800
<i>Charles, Maryland</i>																								
Brumback, Marty	Bryans Road 2 ESE	88.3	68.4	78.4	97	9	63	22+	10	0	0	26	SSW	5	3.29	2.39	10	17.95	11	1	0.0	0.0	0.0	2359
<i>Frederick, Maryland</i>																								
Glass, Eric	Emmitsburg 2 SE	82.4	62.9	72.7	90	4	57	19+	1	0	0				4.05	0.92	11	26.33	15	0	0.0	0.0	0.0	0700
<i>Howard, Maryland</i>																								
Giannola, Rich	Laurel JHU / APL																	1.83						2400

**ACON MD / DE / DC
AUGUST 2012 DAILY TEMPERATURES**

STATION	1	2	3	4	5	6	7	8	9	10	11	12	13	14	15	16	17	18	19	20	21	22	23	24	25	26	27	28	29	30	31	AVG	OBS TIME	
BEAR 2 SW, DE GALLAHER	82 69	88 65	92 70	89 70	93 73	88 72	84 66	87 68	89 69	83 70	86 73	84 66	85 61	85 70	83 65	88 64	81 62	76 59	79 65	81 61	84 60	85 62	86 62	86 68	79 70	84 68	86 66	87 61	83 58	84 63	90 66	85.0 66.0	2400 EDT	
MIDDLETOWN 6 N DE LEGATES	83 69	89 66	91 71	89 71	93 73	88 70	84 70	87 69	90 70	84 73	85 67	86 63	84 69	83 70	86 64	89 65	82 62	76 60	79 64	82 61	86 62	87 64	86 63	87 68	79 69	83 67	88 66	83 59	85 65	81 61	85.5 66.8	2400 EDT		
WILMINGTON , DE NWS NEW CASTLE CO APT	81 69	88 68	90 73	91 74	94 73	90 74	83 68	87 71	89 70	83 71	85 74	86 67	83 63	84 69	86 70	89 65	82 67	76 60	78 64	83 61	85 60	85 64	87 64	87 68	80 70	86 71	88 67	84 63	85 59	92 66	85.5 67.3	2400 EST		
NEWARK AG FARM, DE U OF DE DEOS	81 67	90 66	91 70	89 70	92 72	87 72	85 66	87 69	89 68	83 70	86 72	84 69	85 63	83 68	82 69	84 66	87 65	81 64	75 59	79 64	82 60	85 60	85 63	87 63	79 67	84 68	86 69	86 68	82 64	84 60	84.8 66.2	2400 EDT		
TOWNSEND 4 W, DE U of D REC DEOS	82 67	91 64	94 67	89 70	92 71	87 72	84 68	85 69	88 70	84 72	85 67	83 62	82 68	82 68	84 65	88 65	80 62	76 59	79 64	80 60	83 61	84 62	84 63	84 67	87 69	82 65	86 61	86 81	84 81	84 59	84.6 66.1	2400 EDT		
LAMBERTON, ROY WEST SEAFORD	85 71	95 69	95 72	96 75	94 76	91 75	87 72	92 73	97 73	88 69	87 73	89 70	91 65	90 70	89 68	92 57	93 68	86 63	83 66	83 65	86 65	88 65	88 65	86 66	86 66	67 67	83 75	90 70	88 66	90 70	95 68.9	2400 EDT		
GEORGETOWN, DE NWS SUSSEX CO APT	85 69	90 68	93 73	92 74	92 73	88 72	86 73	89 74	92 71	86 73	86 70	87 67	86 68	86 72	88 69	90 68	80 66	82 63	78 60	82 66	84 65	85 64	84 65	84 65	78 68	82 69	86 65	88 66	83 64	87 71	86.2 69.3	2400 EST		
GEORGETOWN, DE U of D REC DEOS	81 68	89 65	93 71	90 73	90 75	86 71	86 69	87 71	90 72	84 70	83 72	83 69	87 64	85 68	85 70	86 66	79 65	80 59	83 65	83 63	82 61	83 62	82 63	75 66	81 66	85 73	86 68	82 63	85 61	89 69	84.5 67.2	2400 EDT		
HARBESON 8 S, DE U of D REC DEOS	83 67	86 65	91 71	90 71	92 76	87 71	85 68	85 71	88 70	82 70	83 71	83 69	84 63	86 66	85 69	86 67	88 64	77 59	79 63	76 63	81 61	80 61	81 62	81 62	77 66	80 66	85 74	87 67	80 64	85 61	83.9 66.6	2400 EDT		
REHOBOTH BEACH BWK U of D DEOS	82 66	M M	M M	M M	M M	M M	M M	M M	M M	M M	M M	M M	M M	M M	M M	M M	M M	M M	M M	M M	M M	M M	M M	M M	M M	M M	M M	M M	M M	M M	78 68	81 73	M M	2400 EDT
FROSTBURG LATTA	77 62	80 61	84 61	86 64	83 65	81 65	79 60	81 58	84 58	83 62	79 58	74 57	74 55	78 55	79 59	73 57	79 59	76 55	74 56	75 55	72 51	75 51	76 51	80 55	80 55	77 60	73 62	83 56	78 52	76 52	81 57.7	0700 EDT		
LAVALLE MULLINS**	85 67	88 68	90 67	90 68	87 69	85 70	86 63	88 62	89 67	81 65	80 61	79 68	84 62	83 65	79 57	85 60	80 59	79 65	75 60	76 56	80 55	83 58	85 58	88 60	88 66	81 65	82 66	89 69	89 54	84 54	86 62.5	2400 EDT		
PASADENA 2 N HANSON	86 70	91 68	91 72	91 76	95 75	90 73	87 70	89 70	92 71	87 70	87 67	87 63	86 72	87 68	86 64	89 65	92 64	84 61	76 65	80 61	83 60	85 64	88 64	88 69	81 68	82 67	89 67	89 64	84 62	86 69	87.1 67.3	2400 EDT		
LOTHIAN JUG BAY	88 68	90 67	92 69	94 73	95 74	91 73	85 71	89 70	95 69	87 72	89 69	88 65	87 65	89 65	88 67	91 63	81 64	77 62	80 60	84 62	84 60	87 62	87 62	80 67	78 67	90 65	92 61	84 61	89 69	96 66.4	2400 EDT			
BALTIMORE NWS BWI APT	88 71	90 69	92 71	93 76	96 73	92 70	87 71	89 70	92 72	86 69	85 68	88 65	86 69	88 65	88 64	92 64	84 61	80 64	83 61	84 61	84 64	86 66	87 66	87 68	79 68	80 68	89 68	89 64	86 64	93 69	87.0 67.6	2400 EST		
LAUREL 2 E STOUDT	88 72	88 71	90 71	91 77	92 76	87 76	87 72	88 73	91 73	82 71	87 70	83 67	85 66	85 73	83 70	87 68	90 67	82 65	75 64	80 64	78 62	84 64	85 66	86 68	78 71	78 68	83 68	86 70	83 65	93 71	85.2 69.1	2400 EST		
REISTERSTOWN MULLER	88 68	88 69	90 73	93 70	86 73	86 69	88 71	90 72	85 72	85 68	86 65	85 66	85 70	79 65	83 63	86 68	84 64	80 63	82 65	79 59	84 62	86 64	86 68	76 68	77 68	85 67	87 71	84 64	85 62	90 68	84.9 67.5	2100 EDT		
OWINGS MILLS 2SE SHARROW	87 68	92 69	92 70	90 74	93 74	88 71	86 68	90 68	94 68	83 67	84 68	86 62	87 65	87 66	88 64	85 63	81 59	74 63	80 59	82 59	84 59	85 62	86 64	86 68	75 66	86 66	86 69	83 62	86 60	91 65	85.3 65.6	2400 EDT		
BALTIMORE 2SE MANFRE	90 77	93 77	95 78	96 81	101 80	94 80	90 77	93 79	95 79	91 74	92 73	91 74	92 74	91 76	88 74	91 73	96 74	86 72	80 69	85 68	85 71	89 74	90 76	92 72	85 70	79 73	94 77	93 73	89 73	91 76	90.8 74.8	2400 EDT		
BALT INNER HARBOR MD SCIENCE CENTER	89 77	93 77	95 78	97 82	99 79	93 80	90 77	92 79	94 79	90 74	92 74	89 74	90 76	90 74	87 73	91 74	96 72	86 79	79 68	84 72	85 70	88 73	88 75	91 72	84 70	83 73	92 77	92 73	88 72	90 75	90.1 74.5	2400 EST		
MANCHESTER 1SW CLOSE	83 66	90 67	91 70	88 73	91 72	87 70	86 68	88 70	90 69	80 67	84 67	83 61	87 62	85 67	79 64	84 62	89 67	81 61	72 62	80 59	79 56	83 61	86 63	84 66	76 67	78 65	86 67	86 68	82 60	85 66	89 65.3	2300 EDT		
WESTMINSTER 4 SSE HARTSOCK	89 68	96 68	89 69	88 72	90 71	88 70	86 66	89 72	90 70	84 65	86 63	86 69	87 65	90 63	85 64	86 64	89 60	82 59	80 64	83 59	83 61	88 63	88 63	89 68	82 69	89 69	87 70	84 62	84 60	88 64	86.5 66.1	1900 EDT		
MILLERS 4NE MILLER	83 65	87 64	91 67	88 71	85 71	84 70	86 62	89 66	85 67	83 67	82 60	83 58	84 65	80 62	83 60	86 61	79 61	76 55	78 61	80 57	81 57	85 58	81 60	84 64	79 65	84 65	84 68	84 65	82 56	88 61	83.5 62.9	1800 EDT		
BRYANS ROAD 2 ESE BRUMBACK	92 69	95 69	94 71	96 76	96 75	90 74	87 73	88 71	97 70	88 69	88 68	87 65	89 73	89 68	86 65	89 66	90 66	86 64	76 65	81 64	85 63	85 66	88 66	87 68	77 68	82 67	89 67	91 65	86 63	95 70	88.3 68.4	2359 EDT		
EMMITSBURG 2 SE GLASS	84 67	82 64	87 64	90 66	88 72	89 72	85 64	83 64	86 66	86 67	82 67	82 61	79 59	82 60	83 64	79 61	82 61	84 62	79 57	69 60	76 58	81 57	85 58	87 58	77 62	82 68	89 68	91 61	86 58	80 59	82.4 62.9	0700 EDT		

**ACON MD / DE / DC
AUGUST 2012 DAILY TEMPERATURES**

STATION	1	2	3	4	5	6	7	8	9	10	11	12	13	14	15	16	17	18	19	20	21	22	23	24	25	26	27	28	29	30	31	AVG	OBS TIME		
LAUREL JHU / APL GIANNOLA																																		2400 EDT	
NORBECK 1 SE BERGER	86 69	91 68	92 70	92 73	92 73	88 73	87 68	87 71	92 65	85 67	86 68	83 64	86 63	87 71	82 67	86 64	89 64	81 64	74 61	78 63	81 59	84 63	85 61	85 64	77 68	82 68	87 67	86 71	82 62	85 61	93 67	85.5 66.4	2200 EDT		
POTOMAC 4N COHEN	87 70	91 69	93 72	94 76	93 76	88 74	87 71	80 72	90 68	81 68	85 68	80 65	85 65	86 72	82 69	87 66	88 65	82 65	74 64	76 65	82 61	84 64	80 62	83 64	75 65	81 70	87 68	88 71	86 63	88 63	93 66	85.0 67.6	2100 EDT		
OLNEY 1 S GIANNOLA	87 69	91 69	91 71	92 75	92 74	86 73	85 69	86 72	91 67	82 67	85 68	82 64	86 63	86 72	80 67	86 64	89 66	81 64	73 63	77 60	79 73	83 72	86 65	85 68	76 68	81 68	87 68	87 71	83 62	87 63	92 68	85.0 67.7	2400 EDT		
CLARKSBURG 2ENE HOLDEN	84 66	89 67	90 69	90 73	91 72	86 71	84 67	86 71	91 66	82 66	85 66	81 62	84 65	85 68	80 65	83 66	86 64	79 64	74 60	78 59	82 61	85 62	85 66	76 66	82 66	85 66	84 69	81 63	83 61	90 66	83.9 65.6	2400 EST			
ROCKVILLE 2 W McGINNIS	85 69	90 70	91 72	92 77	92 75	88 74	87 70	86 72	90 70	83 68	85 68	82 66	85 65	87 71	80 68	83 65	87 66	80 66	74 65	77 64	80 61	83 64	84 64	85 66	77 68	81 68	85 67	85 68	82 65	84 63	90 68	84.5 67.8	2400 EST		
GLENMONT 1NNE ROSSEN																																		2400 EST	
BETHESDA SCAFIDE																																			2400 EDT
GAITHERSBURG 2WNW SHAW	86 69	90 69	91 72	92 77	93 74	87 73	87 69	87 71	90 68	82 68	85 68	81 64	85 65	85 71	80 67	84 64	87 65	81 65	75 63	77 63	80 61	83 64	83 61	84 65	77 69	79 69	84 69	85 68	81 62	84 62	90 66	84.3 67.1	2400 EDT		
FOREST GLEN TERRY	91 70	93 70	95 72	95 77	95 74	91 74	89 71	91 73	95 70	87 70	90 68	87 67	91 64	91 71	86 69	90 64	92 65	85 64	75 62	82 63	85 60	89 63	88 64	89 65	81 69	84 68	90 68	91 68	89 62	90 62	96 68	89.1 67.6	2400 EDT		
OXON HILL SMITH	89 70	93 70	94 71	96 71	95 75	91 76	86 73	89 73	95 72	87 70	88 69	86 68	89 68	89 71	84 69	88 68	92 67	83 67	75 66	81 65	84 63	83 63	86 66	86 66	79 69	82 69	89 67	89 69	87 67	88 64	95 70	87.7 68.8	2300 EDT		
HOLLYWOOD 3 ENE GLEASON	86 72	90 73	90 75	91 78	92 79	88 79	82 73	85 74	90 73	85 74	84 73	83 72	85 69	87 75	84 73	87 70	89 73	83 70	78 68	78 68	80 67	82 67	84 70	83 70	77 69	80 68	86 70	88 72	83 69	84 68	91 74	85.0 71.8	2400 EDT		
RIDGE ZYLA	87 69	90 73	92 73	91 77	93 78	87 77	85 76	88 75	91 76	87 73	85 72	86 70	88 69	91 75	85 73	91 69	92 73	83 70	78 69	80 69	82 66	82 69	87 70	81 69	75 70	81 66	89 71	91 73	85 69	88 70	93 74	86.6 71.6	2400 EDT		
SMITHSBURG 1.5 SW HUTTO	86 64	88 64	90 66	91 70	91 74	86 68	85 62	88 65	89 66	82 67	82 66	80 59	82 58	83 66	80 64	83 59	86 61	79 59	71 56	77 60	79 60	81 59	85 58	84 61	80 66	80 69	85 66	84 64	81 57	82 56	90 57	83.5 62.8	2400 EDT		
HAGERSTOWN 1E KEEFER	86 65	91 66	92 68	93 73	92 74	88 70	86 64	91 67	91 68	84 67	84 67	83 62	84 59	84 67	80 65	84 60	87 63	81 61	70 58	78 61	80 59	83 59	86 59	84 62	80 66	80 66	86 67	85 66	82 58	84 58	92 59	84.9 64.0	2400 EDT		
SMITHSBURG 3 NE VAUGHN	88 65	93 66	95 68	94 75	93 72	87 68	86 65	91 68	92 67	84 64	83 68	80 61	85 60	86 69	80 64	84 60	86 63	78 61	70 59	78 60	80 58	85 60	88 60	85 64	79 67	80 67	87 67	84 66	81 59	83 62	92 62	85.1 64.2	2400 EDT		
SALISBURY NWS WICOMICO CO APT	85 70	92 69	94 73	95 74	95 77	90 73	87 73	90 74	95 74	91 76	86 74	87 69	90 68	88 72	89 66	91 66	92 66	85 61	84 66	81 66	85 64	86 65	86 65	87 65	75 69	85 70	87 74	90 70	87 67	88 70	92 69.4	2400 EST			
WASH NATIONAL NWS ASOS	91 73	96 75	96 75	96 79	98 78	93 78	90 77	91 77	95 76	88 72	89 71	88 72	90 72	90 73	86 69	91 72	94 69	86 69	78 69	82 69	86 66	86 68	89 70	88 72	82 71	84 71	88 75	91 69	87 69	89 73	97 72.4	2400 EST			
WASH DULLES NWS ASOS	88 69	92 68	91 71	94 75	94 73	90 72	89 71	89 68	94 69	86 67	88 69	85 65	88 66	88 66	84 66	87 65	93 66	84 66	76 64	80 62	83 62	85 62	87 63	87 69	79 68	82 66	88 66	89 66	85 61	89 63	95 66.8	2400 EST			
STERLING 4 N SHAFFER	81 72	85 71	89 72	91 75	86 76	84 73	87 71	90 73	82 69	84 70	80 68	80 72	86 73	87 68	86 65	84 65	87 68	81 65	78 66	80 62	81 63	82 66	85 66	86 67	82 65	90 66	87 65	90 65	85 64	86 62	90 64	85.6 68.4	2400 EDT		
DAVIS 3 SE WV LESHER	76 58	79 57	80 61	81 62	82 66	75 62	75 57	75 52	79 53	79 60	74 54	69 51	70 50	75 52	74 60	69 52	74 53	72 49	69 52	69 52	69 46	73 46	74 50	76 53	75 53	72 56	73 56	79 57	75 49	72 53	79 53	74.6 54.4	0700 EDT		

**ACON MD / DE / DC
AUGUST 2012 DAILY PRECIPITATION**

STATION	1	2	3	4	5	6	7	8	9	10	11	12	13	14	15	16	17	18	19	20	21	22	23	24	25	26	27	28	29	30	31	TOTAL	OBS TIME		
BEAR 2 SW, DE GALLAHER	0.04			0.07	1.21	0.03				0.78	T			0.69			0.11	0.48	T	0.07					T	0.18	0.36	0.08				4.10	2400		
MIDDLETOWN 6 N DE LEGATES	0.04		0.01	0.06	1.39	0.10				0.85				0.16			0.51	0.47		0.04	0.01						0.09	0.22	0.08				4.03	2400	
WILMINGTON, DE NWS NEW CASTLE CO APT	0.10		T		0.75	0.04				0.55	T			0.54	T		0.16	0.21	T	0.02					T	0.19	0.16	0.09				2.81	2400		
NEWARK AG FARM, DE U OF DE DEOS	0.86				0.32	0.30				0.54				1.02	0.02		0.12	0.49		0.05							0.35	0.73	0.09				4.89	2400	
TOWNSEND 4 W, DE U of D REC DEOS	0.12		1.52	0.07	0.50	0.72				0.61				0.65			0.08	0.67		0.02						0.05	0.51	0.16	0.03				5.71	2400	
LAMBERTON, ROY WEST SEAFORD	0.09	0.01			0.51					2.06	0.09			0.02				0.84	0.01	0.01						1.88		0.01					5.53	2400	
GEORGETOWN, DE NWS SUSSEX CO APT	0.02	0.75	0.08		T	T		T		1.66	0.13			0.44			T	0.26	0.04	0.01						1.40	1.36	0.15					6.30	2400	
GEORGETOWN, DE U of D REC DEOS	0.06		0.38					0.01		1.77	0.13							0.31	0.05							1.22	1.00						4.93	2400	
HARBESON 8 S, DE U of D REC DEOS	0.58	0.11							1.30	1.00	0.02							0.24	0.07							2.00	4.83	0.46					10.61	2400	
REHOBOTH BEACH BWK U of DE DEOS	0.48	0.09				0.05		1.10	0.01	0.71	0.09				0.25			0.19	0.02							5.32	0.78	0.26					9.35	2400	
FROSTBURG LATTA	0.13				0.44	0.17				0.75	0.02			0.03	0.08			0.06				0.17	0.18				0.04	0.36						2.43	0700
LAVALE MULLINS**	0.32			0.16	0.09	0.01		0.89	0.38					0.12			0.06			0.62	0.31						1.97							4.93	2400
PASADENA 2N HANSON	0.01				0.19	0.01				0.45	0.29			0.04		0.01	0.26	0.21	0.06	0.18	0.01					0.07	2.86	0.01	0.03					4.69	2400
LOTHIAN JUG BAY	0.01	0.01					0.01			0.43	0.56						0.13	0.02	0.22	0.05	0.01					0.15	2.62		0.02		0.01			4.25	2400
BWI NWS ASOS	T	0.06			T	0.01			0.19	0.29	0.71			0.16			0.18	0.08	0.03	0.71						0.01	3.36		0.03					5.82	2400
LAUREL 2 E STOUDT	0.01	1.36		0.05	0.12				T	0.36	0.80			0.07			0.17	0.17	0.02	0.48	T					0.05	0.78		0.03					4.47	2400
REISTERSTOWN MULLER				T	0.19				T	0.63	0.07			1.16				0.05	0.05	0.90						T	1.65		0.07					4.77	2100
OWINGS MILLS 2SE SHARROW				T	0.73	0.05			T	0.86	0.18			2.51	T		0.07	0.11	T	0.35						T	4.21							9.07	2400
BALTIMORE 2SE MANFRE	0.02	0.10			0.04				0.01	0.28	1.61			0.02			0.13	0.10	T	0.62							3.41		0.02					6.36	2400
BALT INNER HARBOR MD SCIENCE CENTER	0.09	0.17			0.04				0.01	0.28	1.05			0.02			0.09	0.12		0.63							3.37		0.02					5.89	2400
MANCHESTER 1SW CLOSE					0.40	0.02			0.06	0.33	0.01			0.63	0.01		0.04	0.05	0.01	0.69						T	0.78		0.06					3.09	2300
WESTMINSTER 4 SSE HARTSOCK				0.16						0.66				0.18	1.16			0.14	0.04	0.47							1.00		0.05					3.86	1900
MILLERS 4NE MILLER	0.22	T		0.01	0.12	0.16		0.01		0.33	0.42			0.21	0.67		T	0.11	T	0.14	0.57					T	1.92	0.04	0.10					5.03	1800
BRYANS ROAD 2 ESE BRUMBACK					0.02	0.01				2.39	0.05			0.02				0.03	0.03	0.29						0.30	0.14	0.01	T					3.29	2359
EMMITSBURG 2 SE GLASS	0.07	0.01	0.01		0.23	0.62				0.10	0.92			0.24	0.32			0.22		0.12	0.38					T	0.04	0.71	0.06					4.05	0700

ACON MD / DE / DC
AUGUST 2012 DAILY PRECIPITATION

STATION	1	2	3	4	5	6	7	8	9	10	11	12	13	14	15	16	17	18	19	20	21	22	23	24	25	26	27	28	29	30	31	TOTAL	OBS TIME			
LAUREL JHU / APL GIANNOLA																																		2400 EDT		
NORBECK 1 SE BERGER					0.59			0.34	1.16	0.88	0.14	0.04		0.06			0.06	0.23	0.06	0.46		0.14			T	0.40		0.03					4.59 0.0	2200 EDT		
POTOMAC 4N COHEN	0.02				0.16	0.02		1.09	0.02	1.08	1.13			0.08			T	0.15	0.37	0.09		1.10			T	0.39							5.70 0.0	2100 EDT		
OLNEY 1 S GIANNOLA	0.03				0.42	0.07			0.71	0.82	0.31			0.05			0.19		0.08	0.38		0.06			T	0.36		0.03					3.51 0.0	2400 EDT		
CLARKSBURG 2ENE HOLDEN	0.03				0.41	0.01		0.34	1.58	0.37	0.07			0.21			0.02	0.01	0.40	0.31		T			T	0.85	0.01	0.09					4.71 0.0	2400 EST		
ROCKVILLE 2 W McGINNIS	0.02				0.13	T		0.81	T	1.22	0.96			0.07			0.11		0.42	0.06		0.46			T	0.30		0.03					4.59 0.0	2400 EST		
GLENMONT 1NNE ROSSEN																																			2400 EST	
BETHESDA SCAFIDE																																			2400 EDT	
GAITHERSBURG 2WNW SHAW					0.21	0.01		0.13	0.79	0.59	0.28			0.16			0.08	0.01	0.55	0.55	0.01	0.66			T	1.16	T	0.05					5.24 0.0	2400 EDT		
FOREST GLEN TERRY					0.50			T	0.23	0.23	0.11			0.10			0.20	0.11	0.58	0.38		0.01			T	0.27		0.06						2.78 0.0	2400 EDT	
OXON HILL SMITH	0.01				0.05	T				1.12	0.16			0.36			T	0.10	0.23	0.02					0.15	0.66	0.01	T						2.87 0.0	2300 EDT	
HOLLYWOOD 3 ENE GLEASON		0.09					0.01	1.27		0.01	0.46	0.04						0.06		0.01	0.01	0.08					1.70	2.87						6.61 0.0	0700 EDT	
RIDGE ZYLA	0.73						0.33			0.04	0.54							0.17	0.01	0.02						0.44	3.05	0.06						5.39 0.0	2400 EDT	
SMITHSBURG 1.5 SW HUTTO	0.01				0.62	0.01			0.01	1.97				0.97			0.96	0.01	0.57	0.50		0.01					0.53		0.05						6.22 0.0	2400 EDT
HAGERSTOWN 1E KEEFER					0.48				0.02	1.84				0.45			0.61		0.24	0.42	0.01	0.11		1.06	T	0.87		0.04							6.15 0.0	2400 EDT
SMITHSBURG 3 NE VAUGHN			0.07		0.76				0.08	1.13				0.80		0.02	0.49	0.02	0.53	0.27	0.03						0.70								4.90 0.0	2400 EDT
SALISBURY NWS WICOMICO CO APT	0.10					T	T	0.09	0.01	0.31	0.21	0.01		0.13	0.01			0.33	0.03	0.05						1.96	1.02	0.04	0.01						4.31 -	2400 EST
WASH NATIONAL NWS ASOS	T				0.03	0.02	T	T		0.59	0.10		T	0.20			0.01	0.16	0.36	T	0.59	0.35				0.06	0.28		0.03						2.78 0.0	2400 EST
WASH DULLES NWS ASOS	0.56	T			0.15	T		0.01	0.07	0.55	0.26			0.13			0.32	T	0.32	0.20					0.12	0.32		0.01							3.02 0.0	2400 EST
STERLING 4 N SHAFFER	0.21				0.17		0.02	T	0.10	0.75	0.22			0.26			0.04		0.41	0.02		0.14			0.02	0.30		0.02							2.68 0.0	2400 EDT
DAVIS 3 SE WV LESHER	0.91			T		0.34				0.55	0.02			0.01	T	T		0.15		0.02	T					0.04	0.04	0.06	0.01						2.15 0.0	0700 EDT

EVAPORTRANSPIRATION (PER MANUAL INSTRUMENT, NOT COMPUTER GENERATED)

BRYANS ROAD 2 ESE BRUMBACK	0.10	0.30	0.15	0.25	0.40	0.10	0.10	0.10	0.20	0.22	0.18	0.10	0.25	0.15	0.20	0.18	0.22	0.20	0.20	0.02	0.08	0.26	0.04	0.22	0.13	0.05	0.02	0.18	0.20	0.18	0.17	5.15	0700 EDT
-------------------------------	------	------	------	------	------	------	------	------	------	------	------	------	------	------	------	------	------	------	------	------	------	------	------	------	------	------	------	------	------	------	------	------	-------------