



<http://www.jhuapl.edu/weather/education/ACONdata.html>

# ATLANTIC COAST OBSERVER NETWORK, MD / DE / DC CHAPTER WITH DATA FROM NEARBY AREAS

## NEAR RECORD WARMTH, CONTINUED DRYNESS IN EASTERN AREAS

May continued the 2012 trend of above normal temperatures. Minimum temperatures, which averaged further above normal than the maximums, was the main reason that this was one of the warmest May on record. Rainfall amounts varied across the region with Delaware being the driest. Areas from Carroll County westward in Maryland were the wettest. All four National Weather Service stations recorded their warmest spring season on record. The remnants of tropical storm Beryl passed off the coast of North Carolina as a post tropical cyclone on the 30th.

The first week plus saw more clouds than sun. Showers and some thundershowers deposited daily amounts generally less than a quarter of an inch during this period. The wettest day during this period was the 9th when half inch plus amounts were common. The heaviest daily amount of 1.15" fell at **Georgetown UofD DEOS** station.

The coolest temperatures of the month occurred on the 7th and from the 10th to the 12th when temperatures fell into the 40's at most ACON stations.

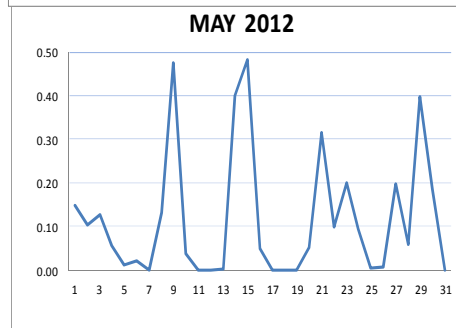
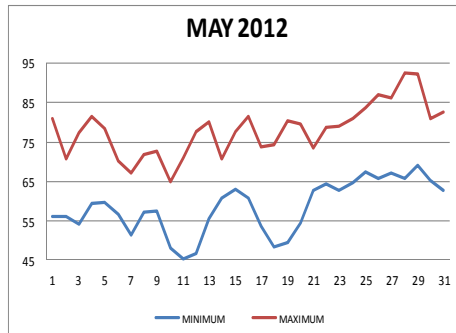
A day long plus soaking rain event occurred on the 14th & 15th. The heaviest amounts fell from Central Maryland westward. **Dave Leshner of Davis 3 SE WV** reported 3.06", and **Ray Muller of Reisterstown 2.19"** and **Bobby Miller of Millers 4 NE 1.87"**.

The period from the 16th to the 20th was mostly sunny and pleasant. Minimum daily relative humidity fell below 40% from the 17th to the 20th.

Showers and thunderstorms occurred on the 21st. Amounts ranged from a few hundreds of an inch in New Castle County Delaware to over an inch in Washington and Frederick Counties in Maryland. More heavy storms occurred on the 23rd and the 24th in portions of Baltimore, Carroll, Montgomery and Washington counties in Maryland. **Jim Vaughn of Smithburg 3 NE** reported 1.52" on the 23rd. Thunderstorms on the 27th brought 1.65" of rain to

**LaVale.** **Greg Latta** of **Frostburg** reported 2.11" on the 27th & 28th (obs days) and pea size hail on the 27th (obs day).

The warmest period of the month occurred during the last week plus of the month. From the 26th to the 29th maximum temperatures ranged from the mid 80's to the mid 90's. **Joe Manfre of Baltimore 2 SE** observed 97°. **Jug Bay Wetlands of Lothian** and **Joe Terry of Forest Glen** each reported 94°. The heat was broken on the 29th by evening thunderstorms associated with the passage of a cold front. Over an inch of rain fell in Washington County and portions of Montgomery County Maryland. This trough and cold front helped steer the remnants of Tropical Storm Beryl into the central Atlantic. The only effects to the region were clouds in the far southeastern areas.



ACON MD/DE Network  
Daily average temperatures and precipitation based on observation times, not calendar days.

### EXTREMES REPORTED BY

#### ACON OBSERVERS

##### MAXIMUM TEMPERATURE

Baltimore 2 SE	97
Jug Bay Wetlands	94
Westminster 4 SSE	94
Forest Glen	94

##### MINIMUM TEMPERATURE

Davis 3 SE WV	31
Frostburg	38
Smithsburg 1.5 SW	38
Bear 2 SW DE	39
Hagerstown 1 E	39

##### WARMEST AVG. TEMP.

Baltimore 3 SE	73.3
West Seaford DE	70.3
Forest Glen	70.2
Westminster 4 SSE	69.3

##### COLDEST AVG. TEMP.

Davis 3 SE WV	59.9
Frostburg	62.7
DEOS Harbeson 8 S DE	65.9

##### MAXIMUM PRECIPITATION

Hagerstown 1 E	7.24
Reisterstown	7.01
Smithsburg 1.5 SW	6.90
Smithsburg 3 NE	6.13

##### MINIMUM PRECIPITATION

Pasadena 2 N	1.86
Bear 2 SW DE	2.04
DEOS Harbeson 8 S DE	2.07
West Seaford DE	2.12

### NEW ACON MEMBER

**Roy Lamberton** has joined. His station, West Seaford, is located in the western neighborhoods of Seaford, Delaware.

**Welcome Roy!!**

**DON'T FORGET HERB'S PARTY - JULY 28, 2PM TILL ?? AT HIS HOME IN MANCHESTER 1 SW, MD RSVF**

# OBSERVER COMMENTS FOR MAY 2012

## Gary Gallaher of Bear 2 SW, DE

Second warmest May in 46 years. Very dry during the last half of the month, 0.12" fell. Many days with winds with an easterly component.

**Jan - May** was the warmest beginning to a year in 46 years of records and the driest in 44 years of records.

**Spring 2012:** Warmest spring in 46 years (56.8°) and the second driest in 44 years (5.65").

## Greg Latta of Frostburg

**27th** - Heavy fog at obs time. Thunder and hail during the 24 hours ending at obs time (7 AM).

## Nate Mullins of LaVale

Second warmest May with an average temperature of 67.5°. The warmest May is 67.8° in 1991. Record May mean min temperature of 57.6°. Previous record was 56.5° set in 1991.

**Spring 2012:** Warmest spring on record (57.4°). Previous record was 55.4° set in 1991 and 2010.

**22nd - 28th** - Very hot week. 5 record high minimums set or tied plus 2 record high maximums tied.

**27th** - A line of intense thunderstorms prompting severe warnings around 7 PM. Storms were not severe here, but we got heavy rain, frequent lightning & gusty winds with some scattered minor tree damage. Another heavy thunderstorm moved through late around 10-11PM with wicked almost continuous lightning & more heavy downpours. Today 1.65" of rain fell breaking the record of 1.54" set in 2011.

## Jeff Stoudt of Laurel 2 E

Although extreme heat was absent, it was consistently warm.

**3rd** - Brief heavy thunderstorm late evening.

**27th** - Brief heavy thunderstorm after dusk.

## Marty Sharrow of Owings Mills

Warmer (+4.4°) than normal. Rain was plentiful (+0.6").

**15th** - Early rain, partly sunny, warmer, humid.

**28th** - Sunny, hot and humid.

**29th** - Sunny, hot and humid, evening thunderstorms.

## Joe Manfre of Baltimore 2SE

**1st** - Cloudy, warm, AM rain.

**3rd** - AM thunderstorm.

**27th** - Variable clouds, hot, humid, few sprinkles.

## Ralph Hartsock of Westminster 4 SSE

**4th** - Heavy thunderstorm, warm and humid.

**14th** - Numerous showers and humid.

**15th** - Early heavy rains, clearing, warm & humid.

## Bobby Miller of Millers 4 NE

Seven days with thunder: 3rd, 4th, 5th, 22nd, 23rd, 29th, and the 30th.

**3rd** - AM storm, 0.32" in 5 minutes.

**21st** - Band of rain from ESE. PM max temp 68°

## Marty Brumback of Bryans Road 2 ESE

**29th** - TRW+ CCCG B2113E2137.

**30th** - Lowest daily PWG (7 MPH) in recent memory.

## Eric Glass of Emmitsburg 2 SE

**29th** - Sunny with patchy fog at obs time.

## Rob Cohen of Potomac 4 N

5th consecutive month with above normal temperatures and below normal precipitation this year.

## Rob Cohen of Potomac 4 N Cont.

Thunder on the 2nd, 23rd, 27th, and 29th.

## Rich Giannola of Olney 1 S

**14th** - RASH during the day and evening.

## Kevin Shaw of Gaithersburg 2 WNW

3rd warmest May with an average temperature of 68.5. The two warmest Mays are 69.6° in 2004 and 68.9° in 1991. Average minimum temperature set of 59.2° broke the existing warmest of 58.8° set in 2004.

**14th** - Record daily precipitation of 1.04".

**29th** - Record daily precipitation of 1.61".

## Joe Terry of Forest Glen

Well above normal temperatures and the wettest month of the year so far. The bulk of the precipitation came in the second half of the month.

**23rd** - First thunderstorm since March 28th. Two distinct thunderstorms moved S to N during the late afternoon and early evening.

## Brian Smith of Oxon Hill

**4th** - Brief +TSRA between 1100 - 1200.

**12th** - Brilliant halo at 1610.

**29th** - +TSRA 2130 - 2200 otherwise -SHRA 2030-2400.

## Wes Gleason of Hollywood 3 ENE

Maximum barometric pressure 30.20" on the 12th  
Minimum barometric pressure 29.51" on the 10th.

## John Zyla of Ridge

**17th** - Clearing and much cooler.

**23rd** - Thunderstorm. Dime size hail 11:20-11:25 PM.

## Max Hutto of Smithsburg 1.5 SW

**26th** - Partly sunny, very warm & humid. Heat index 98°.

**29th** - Mostly sunny, hot and humid, PM thunderstorms & flash flooding, breezy.

## Greg Keefer of Hagerstown 1 E

3rd warmest May with an average of 67.9°. The two warmer Mays are 69.4° in 1991 and 68.6° in 2004.

**4th** wettest May. Wettest May is 8.21" in 2003.

**3rd** - Slow moving severe thunderstorms this evening were hovering just to the northwest, west, and south between 8 & 10 PM. The storms fell apart as they finally moved across this station but did produce some downpours with 0.28" of rain. Large hail, frequent lightning, and strong winds were reported from storms in nearby areas.

**21st** - Heavy downpours fell this evening between 7:30 & 9:30 PM with well over an inch falling in this period.

**29th** - Hot & humid. Very intense T'stm between 5:30 & 6:30 PM with very heavy downpours. 1.5" of rain fell in 25 minutes. 0.39" fell in 5 minutes. Storm total 1.64".

## Jim Vaughn of Smithsburg 2 NE

3rd warmest May with an average temperature of 69.0°. behind 70.9° in 1991 and 69.2° in 2004.

**23rd** - Daily precip. record of 1.52" surpassing 1.17" in 1988.

**27th** - Wind gust of 69 mph is a new May PWG surpassing 67 mph set on May 25, 2004.

**29th** - Daily precipitation record of 1.38" surpassing 1.26" in 1990.

Compiled by Gary Gallaher, MD/DE ACON Data Collector and Report Writer, from data received from dedicated observers. Without your observations each month this report will not be possible.



**ACON MD / DE / DC  
MAY 2012 SUMMARY**

OBSERVER	STATION COUNTY, STATE	TEMPERATURE									PEAK WIND			PRECIPITATION					SNOWFALL				OBS TIME	
		AVG MAX	AVG MIN	MEAN	MAX	DAY	MIN	DAY	MAX >=90	MAX <=32	MIN <=32	GUST	DIR	DAY	TOTAL	MAX DAY	DATE	YEAR	DAYS >=.01"	DAYS >=1"	TOTAL	MAX DAY		DATE
<i>Montgomery, Maryland</i>																								
Berger, Ron	Norbeck 1 SE	78.2	59.0	68.6	91	28+	44	11	2	0	0				4.01	0.66	21	13.45	14	0	0.0	0.0	3.1	2200
Cohen, Rob	Potomac 4 N	76.8	59.5	68.2	89	28	42	11	0	0	0				3.66	0.59	14	12.15	16	0	0.0	0.0	2.0	2100
Giannola, Rich	Olney 1 S	77.3	58.8	68.1	89	28+	41	11	0	0	0				4.43	1.17	14	13.36	12	1	0.0	0.0	4.2	2400
Holden, Richard	Clarksburg 2 ENE																						11.8	2400
McGinnis, Alex	Rockville 2 W	78.0	59.1	68.6	90	29	45	11	1	0	0				4.14	0.80	29	13.10	14	0	0.0	0.0	3.9	2400
Rossen, Stan	Glenmont 1 NNE				92	28+	42	11	<u>Data delayed. Extremes and totals only.</u>						3.29	0.56	29	12.54			0.0	0.0	2.7	2400
Scafide, Tony	Bethesda																							2400
Shaw, Kevin	Gaithersburg 2 WNW	77.7	59.2	68.5	90	28	43	11	1	0	0	21	SW	10	6.05	1.61	29	14.35	12	3	0.0	0.0	5.0	2400
Terry, Joe	Forest Glen	81.5	58.9	70.2	94	28	42	11	2	0	0	23	WNW	10	3.57	0.62	29	12.77	14	0	0.0	0.0	3.0	2400
<i>Prince Georges, Maryland</i>																								
Smith, Brian	Oxon Hill	79.2	59.4	69.3	91	28	48	12	1	0	0				3.70	0.91	29	11.39	15	0	0.0	0.0	2.8	2300
<i>St. Marys, Maryland</i>																								
Gleason, Wes	Hollywood 3 ENE	76.6	61.7	69.2	87	29	51	12	0	0	0	30	W	10	3.02	1.01	15	12.35	13	1	0.0	0.0	1.1	2400
Zyla, John	Ridge	77.9	61.3	69.6	89	28+	50	11	0	0	0	20	SW	29	2.39	0.57	15	14.54	11	0	0.0	0.0	1.7	2400
<i>Washington, Maryland</i>																								
Hutto, Max	Smithsburg 1.5 SW	78.3	56.5	67.4	91	29	38	11	2	0	0	36		27	6.90	1.31	29	19.80	16	3	0.0	0.0	12.8	2400
Keefer, Greg	Hagerstown 1 E	78.0	57.7	67.9	90	28+	39	11	2	0	0	46	NW	27	7.24	1.64	29	17.53	15	2	0.0	0.0	9.4	2400
Vaughn, Jim	Smithsburg 3 NE	79.6	58.3	69.0	93	28	42	11	3	0	0	69	NW	27	6.13	1.52	23	17.72	15	2	0.0	0.0	17.1	2400
<i>Wicomico, Maryland</i>																								
NWS Salisbury	Wicomico Co. Apt	79.2	59.0	69.1	90	29	46	11	1	0	0	32	NW	10	2.61	1.15	9	12.39	11	1				2400
<i>Arlington, Virginia</i>																								
NWS Washington Nationa	National Airport	80.1	62.7	71.4	91	29	52	11+	2	0	0	40	NW	9	3.28	1.22	15	10.74	13	1	0.0	0.0	2.0	2400
<i>Loudon, Virginia</i>																								
NWS Washington Dulles	Dulles Airport	78.8	58.1	68.5	90	28	39	11	1	0	0	52	N	27	5.38	1.41	23	12.81	15	1	0.0	0.0	3.7	2400
Shaffer, Lance	Sterling 4 N																						<u>3.8</u>	2400
<i>Tucker, West Virginia</i>																								
Leshner, Dave	Davis 3 SE WV	69.5	50.3	59.9	81	29	31	11+	0	0	2				5.48	1.85	15	25.73	14	2	0.0	0.0	110.4	0700
<b>SECTION AVERAGE*</b>		<b>78.1</b>	<b>58.6</b>	<b>68.3</b>											<b>3.74</b>			<b>12.60</b>					<b>7.2</b>	

**NOTES:**

\*SECTIONAL AVERAGE DOES NOT INCLUDE DATA FROM WEST VIRGINIA.

\*\*OBSERVER FOR LAVALLE IS SCOTT LOHR. DATA COMPILED BY NATE MULLINS.

\*\*\* DATA FROM DEOS (DELAWARE ENVIROMENTAL OBSERVING SYSTEM) PERMISSION GRANTED FOR USE OF DATA

\*\*\* REC= UNIVERSITY OF DELAWARE RESEARCH AND EDUCATION CENTER

M OR UNDERLINE= MISSING DATA

> = INCLUDED IN NEXT DAYS DATA

*ITALIC* = ESTIMATED DATA

+ = FIRST OF SEVERAL OCCURANCES

WINTER TYPE PRECIPITATION FROM STATIONS WITH

TIPPING BUCKET RAIN GAUGE MAY SHOW UNDER CATCH.

ALSO AMOUNTS CAUGHT MAY BE NOTED IN THE FOLLOWING

DAYS AS IT MELTS.

National Weather Service station data listed herein is preliminary and may be subject to change. The data has not been certified and cannot be used in legal actions.

Only reports certified by the National Climatic Data Center in Asheville, NC may be used for these purposes.

Accuracy of Data from ACON Observers not guaranteed.

GARY GALLAHER 06/28/12

**ACON MD / DE / DC  
MAY 2012 DAILY TEMPERATURES**

STATION	1	2	3	4	5	6	7	8	9	10	11	12	13	14	15	16	17	18	19	20	21	22	23	24	25	26	27	28	29	30	31	AVG	OBS TIME	
BEAR 2 SW, DE	79	60	69	79	73	66	63	73	75	67	71	77	80	69	78	81	73	75	80	79	73	75	78	80	82	86	86	89	90	78	82	76.3	2400	
GALLAHER	55	54	52	58	59	52	48	51	57	45	39	43	50	62	64	62	53	46	45	49	62	61	59	66	67	63	66	63	69	63	59	56.2	EDT	
MIDDLETOWN 6 N DE	81	61	69	80	73	66	65	72	75	67	71	78	81	70	80	82	74	75	80	75	80	77	79	80	82	86	87	90	90	79	82	77.0	2400	
LEGATES	55	54	52	58	60	52	48	51	57	46	42	44	52	62	63	63	53	48	47	53	62	62	60	66	67	63	67	64	70	65	59	56.9	EDT	
WILMINGTON , DE	80	62	67	76	71	65	64	71	76	68	71	78	80	69	76	81	74	75	80	80	73	76	78	81	81	85	86	91	91	78	84	76.4	2400	
NWS NEW CASTLE CO APT	56	52	51	57	59	51	49	57	56	48	44	48	56	62	63	64	54	48	47	51	61	63	63	65	67	67	69	64	69	67	61	57.7	EST	
NEWARK AG FARM, DE	79	61	68	78	71	65	62	72	75	66	70	77	79	69	77	82	72	74	80	80	72	77	78	80	81	85	85	90	89	78	81	75.9	2400	
U OF DE DEOS	55	53	52	57	60	52	49	52	57	49	46	47	60	63	63	63	56	48	48	52	62	62	59	65	67	64	67	64	69	66	61	57.5	EDT	
TOWNSEND 4 W, DE	79	64	59	77	74	67	64	72	74	66	69	76	79	70	78	80	71	73	79	77	72	76	77	81	82	85	86	89	89	77	81	75.6	2400	
U of D REC DEOS	55	53	52	57	60	51	48	53	56	49	47	45	56	61	64	63	53	49	49	53	61	62	61	65	66	66	68	65	68	66	62	57.5	EDT	
LAMBERTON, ROY	89	64	86	87	83	78	89	84	75	M	77	87	82	78	84	87	76	75	82	76	79	79	83	85	88	89	88	91	89	73	88	82.3	2400	
WEST SEAFORD	59	54	54	56	57	48	44	56	53	M	41	44	57	60	66	64	53	48	48	54	62	63	64	63	68	65	67	71	73	67	65	58.2	EDT	
GEORGETOWN, DE	82	65	76	84	74	67	71	78	71	68	72	79	81	78	81	83	73	72	77	72	74	77	81	85	85	89	89	92	91	73	84	78.2	2400	
NWS SUSSEX CO APT	60	54	54	56	58	49	46	59	59	49	47	49	57	62	66	64	50	46	51	55	63	63	64	62	67	64	66	70	72	66	65	58.5	EST	
GEORGETOWN, DE	80	63	74	79	73	65	70	75	69	66	69	76	78	74	79	82	71	70	75	71	74	76	79	81	82	86	86	88	87	74	84	76.0	2400	
U of D REC DEOS	57	50	49	53	55	47	42	57	58	50	45	47	56	61	64	63	50	46	46	50	62	62	63	60	67	62	66	70	73	66	63	56.7	EDT	
HARBESON 8 S, DE	81	62	69	80	70	63	66	74	68	67	70	77	79	76	78	82	68	68	73	69	70	74	76	81	81	86	67	90	89	75	81	74.5	2400	
U of D REC DEOS	58	52	52	55	56	48	43	59	59	51	45	47	54	62	64	64	49	45	47	57	61	61	63	60	66	63	65	68	72	67	64	57.2	EDT	
REHOBOTH BEACH BWK	81	66	57	63	62	52	58	66	M	M	M	M	M	M	M	M	M	M	M	M	M	M	M	M	M	M	M	M	M	M	M	M	M	2400
U of D DEOS	56	49	49	52	48	46	40	51	M	M	M	M	M	M	M	M	M	M	M	M	M	M	M	M	M	M	M	M	M	M	M	M	M	EDT
FROSTBURG	69	77	79	85	80	71	73	73	68	62	57	65	71	70	58	67	76	67	72	76	79	63	75	73	74	80	74	79	84	84	77	72.8	0700	
LATTA	44	57	58	58	56	57	58	56	53	43	38	40	43	52	53	53	43	42	45	46	53	57	56	57	57	60	62	60	64	53	53	52.5	EDT	
LAVALA	78	83	88	84	76	74	71	68	66	64	69	76	73	59	72	82	72	72	81	80	70	80	78	78	89	91	87	90	90	82	80	77.5	2400	
MULLINS**	56	61	62	61	58	62	63	59	57	46	42	44	51	55	59	54	52	44	46	54	63	65	61	67	65	67	67	62	67	58	56	57.5	EDT	
PASADENA 2 N	85	64	75	84	79	71	68	71	76	69	74	80	83	71	78	80	75	76	82	81	74	77	81	81	84	86	85	93	93	82	86	78.8	2400	
HANSON	58	56	54	59	60	57	50	61	58	47	41	44	55	63	65	62	52	47	46	52	63	62	62	67	70	65	67	64	69	65	63	58.1	EDT	
LOTHIAN	85	68	79	85	81	71	72	74	75	71	75	80	82	73	82	86	73	75	81	79	79	78	80	82	85	88	88	94	91	81	87	80.0	2400	
JUG BAY	57	56	54	60	61	59	50	57	57	47	40	44	55	62	63	59	48	46	45	49	64	62	61	65	67	64	65	65	69	63	60	57.2	EDT	
BALTIMORE	83	65	77	85	80	72	69	72	76	68	73	79	82	70	81	83	75	75	83	83	74	77	80	81	83	89	89	93	91	83	85	79.2	2400	
NWS BWI APT	58	56	54	60	60	59	53	59	58	45	44	50	54	62	65	62	53	47	49	51	64	62	63	67	69	66	68	66	69	66	64	58.8	EST	
LAUREL 2 E	81	69	82	82	80	70	69	71	72	66	73	79	82	69	75	79	74	75	82	81	72	74	77	80	83	86	87	88	90	79	81	77.7	2400	
STOUDT	58	57	55	62	63	59	54	59	58	51	48	51	57	63	64	63	55	50	52	57	64	64	64	68	71	68	70	66	70	68	65	60.5	EST	
OWINGS MILLS 2SE	80	67	79	80	80	69	68	70	72	66	71	79	82	70	77	82	75	78	83	82	70	75	76	81	84	88	88	90	92	81	81	77.9	2400	
SHARROW	53	56	52	58	60	57	53	56	58	50	43	47	53	60	62	61	55	47	49	53	61	61	61	62	68	65	67	62	68	65	62	57.6	EDT	
BALTIMORE 2SE	87	69	77	81	82	74	71	73	79	70	75	82	85	74	80	84	78	78	86	85	76	80	83	85	86	93	93	96	97	88	89	81.8	2400	
MANFRE	59	58	58	62	66	63	55	62	63	57	53	59	64	65	68	66	62	60	61	66	67	68	70	69	73	72	73	73	72	73	72	64.8	EDT	
BALT INNER HARBOR	86	68	76	82	82	73	M	73	78	70	75	82	84	73	80	86	77	79	85	85	77	82	83	87	87	92	91	98	97	87	87	82.1	2400	
MD SCIENCE CENTER	59	58	57	62	65	61	M	62	61	57	53	59	62	65	68	66	62	60	60	67	67	68	70	69	73	71	73	73	72	73	72	64.8	EST	
MANCHESTER 1SW	79	66	79	82	79	69	65	67	72	62	68	77	82	66	76	81	69	73	79	80	66	74	78	78	83	88	86	88	89	81	78	76.1	2300	
CLOSE	53	51	50	57	60	57	51	54	55	46	40	49	55	58	60	60	50	52	49	57	60	60	60	62	64	65	64	61	64	63	61	56.4	EDT	
WESTMINSTER 4 SSE	82	75	83	86	82	79	73	73	81	68	72	81	84	69	84	84	73	76	79	82	70	82	82	78	85	92	92	94	92	89	82	80.8	1900	
HARTSOCK	55	60	54	62	61	60	56	57	64	50	43	47	53	62	62	61	55	46	49	53	63	63	62	64	67	65	67	63	69	67	64	58.8	EDT	
MILLERS 4NE	79	77	80	82	82	74	66	67	72	65	70	76	79	74	77	80	79	75	80	81	78	76	78	80	82	85	86	89	88	82	78	78.0	1800	
MILLER	54	56	52	58	58	57	52	56	62	49	43	46	50	58	60	59	51	43	46	51	62	61	59	62	65	65	67	61	68	64	60	56.6	EDT	
BRYANS ROAD 2 ESE	84	75	82	83	82	71	71	74	73	68	72	78	80	73	80	82	75	74	80	78	75	78	81	81	85	86	86	91	89	81	84	79.1	2359	
BRUMBACK	59	57	55	62	59	59	54	58	56	50	44	45	60	61	64	60	54	47	48	53	64	64	64	64	68	66	67	66	70	67	63	59.0	EDT	
EMMITSBURG 2 SE	59	80	70	80	81	79	68	67	66	71	63	70	75	79	64	76	80	69	75	80	82	67	74	77	79	83	85	85	87	87	83	75.5	0700	
GLASS	41	53	54	54	60	61	57	56	58	51	46	44	51	54	59	59	54	46	46	53	60	63	63	64	65	66	67	63	65	63	62	56.7	EDT	

**ACON MD / DE / DC  
MAY 2012 DAILY TEMPERATURES**

STATION	1	2	3	4	5	6	7	8	9	10	11	12	13	14	15	16	17	18	19	20	21	22	23	24	25	26	27	28	29	30	31	AVG	OBS TIME	
LAUREL JHU / APL GIANNOLA																																		2400 EDT
NORBECK 1 SE BERGER	81 57	76 58	81 55	81 62	81 61	69 60	68 55	69 58	73 57	66 50	70 44	78 45	79 54	70 61	77 62	80 61	72 58	73 48	83 48	83 54	71 63	75 64	79 63	81 66	84 68	88 66	88 68	91 65	91 69	82 65	83 64	78.2 59.0	2200 EDT	
POTOMAC 4N COHEN	82 58	75 62	81 56	80 62	78 60	71 61	69 58	69 59	71 58	64 51	70 42	75 46	80 55	67 62	74 63	79 61	72 58	73 49	80 50	80 54	71 64	73 64	77 63	81 65	84 69	85 67	86 68	89 65	88 69	78 64	79 63	76.8 59.5	2100 EDT	
OLNEY 1 S GIANNOLA	80 56	74 57	79 54	80 62	78 61	68 59	68 55	68 58	70 57	65 50	70 41	76 46	79 55	69 61	77 62	81 60	72 56	> >	> >	> >	> >	82 48	77 63	80 66	83 68	86 67	86 67	89 64	89 68	79 65	81 62	77.3 58.8	2400 EDT	
CLARKSBURG 2ENE HOLDEN																																		2400 EST
ROCKVILLE 2 W McGINNIS	81 55	77 57	80 54	81 63	83 62	70 59	69 57	68 57	72 56	64 48	69 45	77 47	81 56	67 60	78 63	80 62	72 55	76 50	80 52	83 56	70 62	76 63	79 63	82 66	85 68	86 67	87 67	89 66	90 68	82 64	83 65	78.0 59.1	2400 EST	
GLENMONT 1NNE ROSSEN											42																		92	92				2400 EST
BETHESDA SCAFIDE																																		2400 EDT
GAITHERSBURG 2WNW SHAW	82 57	77 59	81 55	81 62	79 62	69 61	69 58	68 59	72 57	64 49	72 43	76 45	79 55	68 61	77 63	81 61	73 55	75 48	81 50	81 54	70 64	77 64	76 64	80 66	85 68	86 68	86 67	90 65	88 68	82 64	83 64	77.7 59.2	2400 EDT	
FOREST GLEN TERRY	86 58	79 57	85 54	84 63	83 61	72 60	72 56	72 59	75 56	70 47	74 42	81 45	83 56	70 61	83 63	85 61	78 53	78 48	85 48	85 53	73 63	82 64	82 64	84 66	89 68	89 68	89 68	94 65	92 69	86 65	85 64	81.5 58.9	2400 EDT	
OXON HILL SMITH	83 58	72 56	83 54	81 62	82 61	70 58	71 53	73 57	72 57	68 53	73 50	78 48	80 58	72 61	80 64	81 61	76 54	75 49	82 51	79 55	76 63	78 64	80 64	83 64	85 67	87 66	87 67	91 66	89 69	82 67	85 65	79.2 59.4	2300 EDT	
HOLLYWOOD 3 ENE GLEASON	82 62	70 57	70 55	81 63	78 62	73 58	68 56	75 60	71 58	67 53	71 52	76 51	78 64	72 62	78 64	79 63	72 60	74 54	78 57	77 59	74 65	75 66	77 65	79 66	81 65	82 66	82 65	86 70	87 68	87 71	78 68	83 65	76.6 61.7	2400 EDT
RIDGE ZYLA	85 61	71 57	71 55	80 62	81 62	74 57	71 54	78 60	73 57	68 54	71 50	79 55	81 62	72 60	81 66	81 63	70 61	76 57	80 54	75 59	76 64	74 63	78 65	81 64	83 69	84 67	85 69	89 72	89 73	89 67	75 65	84 65	77.9 61.3	2400 EDT
SMITHSBURG 1.5 SW HUTTO	80 55	80 58	86 56	85 60	79 58	71 61	68 57	68 59	70 57	62 48	72 38	76 40	80 51	63 59	76 61	82 54	73 49	77 42	84 47	83 51	68 63	79 63	77 61	82 63	84 64	89 64	87 65	90 62	91 67	86 62	80 58	78.3 56.5	2400 EDT	
HAGERSTOWN 1E KEEFER	81 54	80 59	85 56	84 61	78 60	72 63	67 59	67 58	71 57	63 50	71 39	76 42	79 53	64 60	76 62	82 56	72 51	75 44	82 48	82 53	68 64	78 63	80 62	82 64	85 65	89 66	88 66	90 64	90 68	84 62	78 60	78.0 57.7	2400 EDT	
SMITHSBURG 3 NE VAUGHN	78 53	78 58	88 54	83 62	78 60	70 61	65 58	68 55	69 57	72 42	72 45	81 46	84 61	72 62	81 57	84 52	76 47	75 49	83 52	84 64	70 65	82 62	82 63	81 67	88 68	92 67	88 65	93 65	90 67	83 62	77 61	79.6 58.3	2400 EDT	
SALISBURY NWS WICOMICO CO APT	84 62	65 55	79 55	83 58	84 59	71 50	72 47	78 59	71 60	69 52	72 46	78 48	81 55	78 62	82 66	84 65	76 52	74 50	79 55	74 65	77 64	77 64	81 62	83 66	84 66	87 62	89 62	89 63	90 73	78 73	87 68	79.2 59.0	2400 EST	
WASH NATIONAL NWS ASOS	84 60	74 58	81 56	84 65	83 64	72 61	73 57	75 61	75 59	70 56	73 52	78 52	80 62	73 62	79 67	82 63	77 61	76 55	84 56	81 59	75 66	81 66	81 66	83 69	86 71	86 71	87 70	90 70	91 70	83 69	85 69	80.1 62.7	2400 EST	
WASH DULLES NWS ASOS	84 57	77 59	84 55	84 60	80 60	71 61	70 58	70 57	73 56	66 50	73 39	77 42	81 57	67 61	80 64	83 57	73 50	75 45	81 48	82 51	70 64	80 63	80 62	81 63	85 66	86 66	86 67	90 66	88 69	85 65	82 64	78.8 58.1	2400 EST	
STERLING 4 N SHAFFER																																		2400 EDT
DAVIS 3 SE WV LESHER	76 48	71 53	71 53	79 59	67 54	67 52	71 53	69 55	59 49	56 39	53 31	60 31	68 45	68 50	59 50	64 46	69 45	67 42	69 46	71 48	72 53	69 51	70 54	70 55	70 58	78 57	79 60	79 61	81 60	78 53	73 47	69.5 50.3	0700 EDT	

**ACON MD / DE / DC**  
**MAY 2012 DAILY PRECIPITATION**

STATION	1	2	3	4	5	6	7	8	9	10	11	12	13	14	15	16	17	18	19	20	21	22	23	24	25	26	27	28	29	30	31	TOTAL	OBS TIME
BEAR 2 SW, DE GALLAHER	0.11	0.14	0.34	T				0.07	0.63	0.06				0.14	0.43					0.01	T		0.03	T				0.07	0.01		2.04 0.0	2400 EDT	
MIDDLETOWN 6 N DE LEGATES	0.10	0.51	0.42			0.01		0.03	0.50	0.07				0.13	0.48				0.01	0.02	0.01							0.09	0.02		2.40 -	2400 EDT	
WILMINGTON, DE NWS NEW CASTLE CO APT	0.16	0.44	0.21	0.01				0.05	0.38	0.02				0.13	0.54	T				0.10	0.04		T				0.16	0.01		2.25 0.0	2400 EST		
NEWARK AG FARM, DE U OF DE DEOS	0.08	0.24	0.35		0.01			0.08	0.48	0.06				0.12	0.55	0.05				0.05	0.01		0.07				0.16	0.03		2.34 -	2400 EDT		
TOWNSEND 4 W, DE U of D REC DEOS	0.01	0.36	0.15					0.02	1.06	0.07				0.26	0.41					0.01	0.01						0.46	0.04		2.86 -	2400 EDT		
LAMBERTON, ROY WEST SEAFORD	0.27	0.04	0.02					0.43	0.05					0.06	0.27					0.21	0.02		0.01				0.04	0.69	0.01	2.12 0.0	2400 EDT		
GEORGETOWN, DE NWS SUSSEX CO APT	0.10	0.02	0.04					0.44	0.06					T	0.23					0.15	0.02	T					0.19	0.37		1.62 -	2400 EST		
GEORGETOWN, DE U of D REC DEOS	0.21	0.04	0.02					1.15	0.05					0.25						0.85	0.05	0.01						0.58	0.01	3.22 -	2400 EDT		
HARBESON 8 S, DE U of D REC DEOS	0.31	0.02	0.03					0.84	0.10					0.29						0.12		0.01						0.35		2.07 -	2400 EDT		
REHOBOTH BEACH BWK U of DE DEOS	0.14	0.01	0.12					0.71	0.09					0.49						0.20	0.08							0.33	0.01	2.18 -	2400 EDT		
FROSTBURG LATTA	0.19	0.21	0.06	0.08		0.79	0.01	0.17	0.45	0.13				0.47	0.90					0.13	0.15		T	0.16		0.77	1.34	0.06	6.07 0.0	0700 EDT			
LAVALE MULLINS**	0.18	0.03	T	0.02	0.04		0.02	0.37	0.07				0.11	1.16						T	0.09		0.18		0.27	1.65		0.45		4.64 0.0	2400 EDT		
PASADENA 2N HANSON	0.05		0.02	0.04		0.01		0.01	0.43	0.02				0.10	0.46	0.02				0.05	0.30	0.03	0.01	0.01		0.08		0.20	0.02	1.86 0.0	2400 EDT		
LOTHIAN JUG BAY	0.10	0.05	0.18	0.75				0.05	0.40	0.03				0.12	0.42					0.07	0.23				0.06		0.23	0.03	0.01	2.73 0.0	2400 EDT		
BWI NWS ASOS	0.07	T	0.04	T	0.02	T	T	0.10	0.26	T				0.15	0.39					0.04	0.56	T	T	T	T	0.24		0.12	T	1.99 0.0	2400 EST		
LAUREL 2 E STOUDT	0.10	0.02	0.48	T		0.02		0.11	0.26	0.01				0.45	0.55					0.15	0.21	0.04	0.02	T		0.35		0.26	0.02	3.05 0.0	2400 EST		
REISTERSTOWN MULLER	0.06	0.01	0.10	0.06	0.09	T		0.61	0.65	0.09			T	1.36	0.83					0.67		0.03	1.58		0.21	0.03		0.63		7.01 0.0	2100 EDT		
OWINGS MILLS 2SE SHARROW	0.03	0.27	0.10	0.01	T	T		0.48	0.66	0.02			T	0.47	0.66					0.90		T	T	T			0.74	T	4.34 0.0	2400 EDT			
BALTIMORE 2SE MANFRE	0.13	0.02	0.31		T	0.01		0.09	0.66	0.01				0.13	0.36					0.01	0.34	0.01			T		0.18		2.26 0.0	2400 EDT			
BALT INNER HARBOR MD SCIENCE CENTER	0.19	0.03	0.31		0.06	0.01	M	0.08	0.65	0.01				0.11	0.34					0.01	0.33	0.02				0.01		0.28		2.44 -	2400 EST		
MANCHESTER 1SW CLOSE		0.13	0.47	0.01	T	0.01	0.01	0.39	0.23	0.02			0.01	1.00	0.39					0.86	T	0.39	0.02		0.01	0.27	0.01	0.79	0.01	5.03 0.0	2300 EDT		
WESTMINSTER 4 SSE HARTSOCK	0.08	0.08	0.09	0.64		0.01		0.27	0.23	0.22				0.82	0.90					0.57		0.04	0.45			0.21		0.46		5.07 0.0	1900 EDT		
MILLERS 4NE MILLER	0.05	0.11	0.64	T	0.04	0.01	T	0.29	0.11	0.20				0.82	1.05					0.86	T	0.02	0.10	T		0.20		0.62		5.12 0.0	1800 EDT		
BRYANS ROAD 2 ESE BRUMBACK	0.43	0.08	T	0.09	T	T		0.05	0.54					0.26	0.99					0.01	0.15		0.16	0.12		0.12		0.76		3.76 0.0	2359 EDT		
EMMITSBURG 2 SE GLASS	0.05	0.17	0.12	0.06	0.02			T	0.40	0.08				0.16	1.05	0.01				0.05	1.38		0.34	0.04		0.01	0.54		0.40		4.88 0.0	0700 EDT	

**ACON MD / DE / DC  
MAY 2012 DAILY PRECIPITATION**

STATION	1	2	3	4	5	6	7	8	9	10	11	12	13	14	15	16	17	18	19	20	21	22	23	24	25	26	27	28	29	30	31	TOTAL	OBS TIME		
LAUREL JHU / APL GIANNOLA																																		2400 EDT	
NORBECK 1 SE BERGER	0.11			0.08		T		0.16	0.64	0.02				0.61	0.44						0.66	0.01	0.24	0.04			0.28	T	0.64	0.08		4.01 0.0	2200 EDT		
POTOMAC 4N COHEN	0.10	0.01		0.02				0.17	0.53	0.03				0.59	0.35	0.03					0.55	0.07	0.13	0.05			0.35		0.56	0.12		3.66 0.0	2100 EDT		
OLNEY 1 S GIANNOLA	0.11	0.01	0.12			0.01		>	0.75					1.17	0.38			>	>	>	>	0.56	0.23	0.01			0.31		>	0.77		4.43 0.0	2400 EDT		
CLARKSBURG 2ENE HOLDEN																																		2400 EST	
ROCKVILLE 2 W McGINNIS	0.11	T	0.01	T				0.32	0.52	0.02				0.74	0.30						0.04	0.52	T	0.12	0.05	T		0.53		0.80	0.06		4.14 0.0	2400 EST	
GLENMONT 1NNE ROSSEN																														0.56				3.29 0.0	2400 EST
BETHESDA SCAFIDE																																			2400 EDT
GAITHERSBURG 2WNW SHAW	0.06	T	0.04			T		0.22	0.57					1.04	0.63						0.66	0.03	1.08	0.06			0.05		1.61			6.05 0.0	2400 EDT		
FOREST GLEN TERRY	0.13	0.03	0.01					0.09	0.33	T				0.37	0.61						0.01	0.58	0.02	0.58	0.02			0.17		0.62	T		3.57 0.0	2400 EDT	
OXON HILL SMITH	0.12	0.04	0.01	0.23		0.01		0.09	0.67	0.01				0.31	0.88						T	0.06	T	0.15	T			0.19		0.91	0.02		3.70 0.0	2300 EDT	
HOLLYWOOD 3 ENE GLEASON	0.74	0.08			0.04				0.37	0.01				0.02	1.01							0.04	0.01		0.03			0.03	0.42	0.22			3.02 0.0	2400 EDT	
RIDGE ZYLA	0.38	0.28							0.18	0.01				0.10	0.57	0.02						0.01		0.34	0.01						0.49		2.39 0.0	2400 EDT	
SMITHSBURG 1.5 SW HUTTO	0.23	0.13	0.05	0.01				0.34	0.08					1.14	0.40							1.30	0.21	0.81	0.09			0.75	0.01	1.31	0.04		6.90 0.0	2400 EDT	
HAGERSTOWN 1E KEEFER	0.16	0.14	0.28		T			0.29	0.05				T	0.92	0.21							1.33	0.55	0.57	0.22		0.01	0.85		1.64	0.02		7.24 0.0	2400 EDT	
SMITHSBURG 3 NE VAUGHN	0.29	0.20	0.04					0.29	0.09				0.02	0.78	0.02							0.56	0.12	1.52	0.20			0.56		1.38	0.06		6.13 0.0	2400 EDT	
SALISBURY NWS WICOMICO CO APT	0.08	0.31	0.01	0.03	0.11				1.15	0.02				T	0.31						0.21	T		0.01	T					0.37			2.61 -	2400 EST	
WASH NATIONAL NWS ASOS	0.15	0.02	T	0.12	T	T		0.03	0.58						0.24	1.22					0.01	0.03	0.01	0.31	T	T		0.05		0.51	T		3.28 0.0	2400 EST	
WASH DULLES NWS ASOS	0.09	0.01	T	0.05	0.01	T		0.09	0.37					0.46	0.68						0.01	0.37	0.44	1.41	0.16			0.30		0.93			5.38 0.0	2400 EST	
STERLING 4 N SHAFFER																																			2400 EDT
DAVIS 3 SE WV LESHER	0.23	0.55	0.03		0.65	T		0.04	0.56	0.13				1.21	1.85	T							0.03	0.13	T	T		0.02	0.01	T	0.04		5.48 0.0	0700 EDT	

EVAPORTRANSPIRATION (PER MANUAL INSTRUMENT, NOT COMPUTER GENERATED)

BRYANS ROAD 2 ESE BRUMBACK	0.02	0.10	0.10	0.17	0.08	0.10	0.15	0.08	0.12	0.05	0.15	0.20	0.20	0.20	0.04	0.15	0.16	0.17	0.13	0.25	0.25	0.10	0.20	0.15	0.10	0.30	0.10	0.40	0.30	0.20	0.15	4.87	0700 EDT
-------------------------------	------	------	------	------	------	------	------	------	------	------	------	------	------	------	------	------	------	------	------	------	------	------	------	------	------	------	------	------	------	------	------	------	-------------