



<http://www.jhuapl.edu/weather/education/ACONdata.html>

# ATLANTIC COAST OBSERVER NETWORK, MD / DE / DC CHAPTER WITH DATA FROM NEARBY AREAS

## WARM MONTH CAPPED OFF A WARM WINTER

The following excerpt was taken from **Jeff Stoudt's** of **Laurel 2 E** monthly summary. "This February completed a trifecta of mild months this meteorological winter and when combined produced one of the warmest winters on record. Leap Day accounted for 63% of February's precipitation and decided between February being only a slightly sub normal in precipitation rather than being significantly sub-normal." Another result of the mild winter temperatures came from **Rich Giannola** of **Olney 1 S**. On the 5th Rich reported the earliest crocus bloom since he began keeping records in 1991.

February began with unseasonably warm temperatures. Maximums were in the mid 60's to around 70° while minimums ranged from the mid 40's to lower 50's. This was the warmest day at a majority of locations.

Temperatures declined from the 2nd till they reached their coldest around the 12th. Minimums on the 12th ranged from the mid teens to around 20°. Maximums on 12th failed to rise above freezing at all but a few stations, the only day when the temperature failed to rise above freezing at most locations.

The cold spell was brief, which was typical for the winter 2011-12. Temperatures quickly rebounded.

There was a general uptrend of temperatures for the balance of the month. 60° plus temperature returned for the 22nd to 24th and the 27th.

Precipitation this month was below normal. If it wasn't for the storm which occurred on the 29th a majority of stations would have totals of less than an inch. Snowfall totals were also below normal.

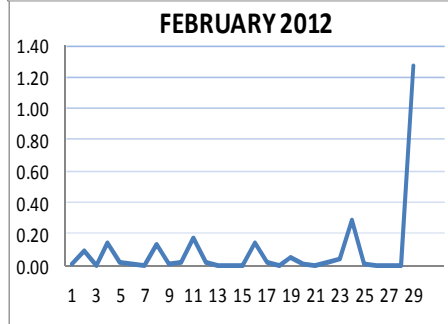
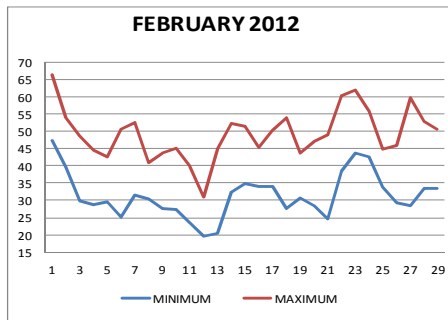
Precipitation events were frequent but except for the 29th they were all generally less than a quarter of an inch liquid. The second heaviest amounts occurred on the 24th. Totals varied across the region from 2/3's of an inch at **Georgetown DE DEOS** and at **Lothian Jug Bay Wetland** to around a tenth of an inch in portions of

the Washington DC suburbs. Thunder was reported by some observers. Also a tornado watch was issued for extreme Southern Maryland.

Snowfall was concentrated to two periods, the 4th to the 12th and the 25th. Amounts of upwards of an inch fell west of Baltimore / Washington on the 4th. Light snows of an inch or less fell on the 8th across the region except in Carroll County where amounts ranged upwards to 2" while Washington County snowfall amounts were in the 1" plus range.

Snow again fell on the 11th & 12th. One to three plus inches fell across northern DE & MD. An inch and a quarter or less fell in the Central and Southern regions.

The last snowfall of the month occurred on the 25th. A trace to a few tenths of an inch fell in central and southern areas.



ACON MD/DE Network  
Daily average temperatures and precipitation based on observation times, not calendar days.

### EXTREMES REPORTED BY

#### ACON OBSERVERS

##### MAXIMUM TEMPERATURE

Bryans Road 2 ESE	71
Forest Glen	71
Pasadena 2 N	70
Lothian	70
Glenmont 1 NNE	70
Ridge	70

##### MINIMUM TEMPERATURE

Davis 3 SE WV	0
Frostburg	9
Smithsburg 3 NE	11

##### WARMEST AVG. TEMP.

Ridge	44.1
Hollywood 3 ENE	43.5
Bryans Road 2 ESE	43.2

##### COLDEST AVG. TEMP.

Davis 3 SE WV	29.6
Frostburg	33.4
LaVale	37.6
Smithsburg 3 NE	37.6

##### MAXIMUM PRECIPITATION

Davis 3 SE WV	3.88
Ridge	3.74
Lothian	3.21

##### MINIMUM PRECIPITATION

Emmitsburg 2 SE	0.93
Frostburg	1.65

##### MAXIMUM SNOWFALL

Davis 3 SE WV	25.0
Frostburg	9.1
Manchester 1 SW	8.0

Please submit your data by the **20th** of the following month. Requesting data from observers delays issuing the report. If there are any situations which may delay your data please contact Gary Gallaher or Kevin Shaw.

# OBSERVER COMMENTS FOR FEBRUARY 2012

## Gary Gallaher of Bear 2 SW, DE

This was the third warmest of 46 Februarys' here. The longest consecutive days with minimum temperature  $\leq 32^\circ$  this winter occurred from the 3rd to the 21st. Total miles of wind was the lowest since this type of record began in 2006.

**Winter 2011-12:** Avg. max 48.8°, Avg. min 29.4°, Avg. mean 39.1° (each the 2nd warmest out of 45 winter seasons). It was also the first winter without a temperature below 20°. Precipitation 9.20", Snowfall 4.9". Normal winter average temperature 34.1°, precipitation 9.82", snowfall 19.8".

## Greg Latta of Frostburg

5th - Max snow depth for the month at obs. time was 4".

24th - Fog with visibility of  $< \frac{1}{2}$  mile at obs. time.

29th - Periods of rain, heavy at times, after daybreak.

## Nate Mullins of LaVale

February's average minimum temperature of 30.1° set a new record high for February.

**Winter 2011-12** Average temperature of 36.4° is the 4th warmest on record. 9.2" of snow is the 3rd lowest in 64 years of local records.

1st - Record high minimum temperature of 49°. Old record was 43° set in 1988.

4th & 5th - SN during PM hours of the 4th, SHSN (snow flurries) on the 5th. 2" of slushy SN fell.

23rd - Record high minimum temperature of 45°. Old record was 42° set in 1996..

## Jeff Stoudt of Laurel 2 E

4th - Mid afternoon -RA mixed with evening wet -SN.

25th - "Feeble" -SHSN (snow flurries) at times.

## Marty Sharrow of Owings Mills

1st - Clearing and warmer.

8th - Inc. clouds with -SN in afternoon and early evening.

11th - Cloudy, cold with -SN.

12th - Variable clouds, very windy, frigid.

21st - Frosty start, variable clouds, windy & mild.

25th - Variable clouds, very windy, colder, snow flurries.

29th - Rainy, fog, evening thunderstorms.

## Herb Close of Manchester 1 SW

Seven days with measurable snow. At least a trace of snow cover for 8 consecutive days between the 8th to the 15th.

## Ralph Hartsock of Westminster 4 SSE

4th - PM SN ends early evening.

8th - SN arrived @ noon, ends in the evening.

11th - Early SN, colder & windy late.

16th - Some RA ended early.

24th - Foggy, some SHRA, windy late.

## Bobby Miller of Millers 4 NE

4th - Afternoon and evening wet SN.

6th - Heavy AM frost.

8th - Afternoon / evening light to moderate SN. Light SG (snow grains) during evening.

11th - 4 PM SNSQ (snow squall)

18th - Virga.

29th - At 6 PM +FG, visibility zero.

## Marty Brumback of Bryans Road 2 ESE

16th - -FG began ~10 PM & became +FG with visibility  $< \frac{1}{4}$  mile by 11:30 PM.

17th - +FG @ 7 AM obs.

19th - -BR (mist) 7:02 PM switched over to SN at 8:15 PM. SWE ratio 7:1. Temperature  $\geq 33^\circ$  at all times.

## Rob Cohen of Potomac 4 N

8th - Mixed -RA & -SN 2-8 PM.

11th - -RA to -SN predawn, SNSQ 3:30PM, SHSN 10-12PM.

25th - Quite windy, SHSN 8 AM.

29th - +RA 8-12 AM, Thunder 2 PM.

## Rich Giannola of Olney 1 S

1st - Predawn -SHRA.

4th - RA began mid afternoon, changing to RASN then all SN by 4:45 PM. SN ended in early evening. -DZ at 8:45PM.

11th - Four snow events: Overnight RA changed to SN and ended before dawn brought 0.7" SN & .21" liquid. -SNSN 9:15AM to 1:00PM brought a trace of snow and .01 liquid. +SHSN began 3:00 PM was accompanied by strong, gusty winds, SN ended by 4:00PM brought 0.3" snow and .02" liquid. Late evening SHSN brought .3" more SN and .02" liquid.

29th - RA during day. TSRA 6:40-7PM. RA ended 8PM, totaled 1.57". More RA in evening brought another 0.18".

## Alexander McGinnis of Rockville 2 W

6th - Moderate frost.

8th - -RA began late PM, mixed with wet -SN before midnight....

9th - ... and ended ~7AM (0.6"). AM min 33°. Occasional -SN 9:25AM-12:20PM, then -SHSN & SHSN 2:44-3:31PM as temp 39° to 31° (0.5" fluffy SN), few flakes ~4:10PM, finally -SHSN / SHSN ~9PM-midnight (0.2").

16th - Late evening -FG.

17th - Early AM -FG.

29th - RA 7:20-11:40AM (1.12") TSRA 1:50-2:50PM (0.06") -RA & RA 4-9PM (0.43").

## Stan Rossen of Glenmont 1 NNE

1st - A couple of -SHRA showers moved in after 4:40AM and were over by 6:30AM.

8th - -RA began shortly before 2 PM and mixed with and changed to SN as the afternoon progressed. As the precip tapered off there was a period of -PL around 6:45 PM as it transitioned back to light sprinkles that continued past 8 PM. Also like the 4th the snow melted by my midnight obs time.

11th - -RA changed to -SN and ended as flurries after 7AM (0.3"). The snow melted by midday. Intermittent sprinkles fell during the midday hours. The cold front arrived at just about 3 PM with gusty breezes and a shower that was initially a moderate mix of snow pellets and snow. After a few minutes the snow pellets disappeared.

Continued on Page 3

Compiled by Gary Gallaher, MD/DE ACON Data Collector and Report Writer, from data received from dedicated observers. Without your observations each month this report will not be possible.

## MD/DE ACON Report February 2012

Continued from Page 2

### **Stan Rossen of Glenmont 1 NNE (Cont.)**

**11th (Cont.)** The SN continued until 4:15 PM adding another 0.2" on non-pavement surfaces before melting off. Another 0.1" of SN fell mid evening through obs.

**29th** - The barometer was quite erratic throughout its day long fall with quite a few brief rapid rises and falls. One notable example was a fall from 29.93" at 2:10 PM to 29.79" at 2:42 PM. It edged up to 29.88 at 2:55 PM, then shot up to 29.85 at 3:05 PM and to 29.67" a short time later before leveling off. 60% of the months rain fell today. Today's precipitation was a daily record as it became the last date in my 35 ½ years of records to record measurable precipitation.

### **Kevin Shaw of Gaithersburg 2 WNW**

February's average mean temperature of 41.2° was the warmest ever. The old record was 41.0° in 1990. The average minimum of 32.2° surpassed the previous record of 30.5° in 1998. The average maximum of 50.2° was the 3rd warmest and only the 4th February with a 50° or warmer February average maximum temperature. Snowfall, while anemically low once again in this virtually snowless winter, actually wound up as only the 16th least snowy February.

**1st** - AM sprinkles, partly cloudy very warm rest of the day.

**11th** - SN midnight to 4 AM (0.7"), SNSQ 2:30-3:15 PM (0.4"), SHSN 11PM to midnight (0.2").

**15th** - Mostly sunny, mild.

**19th** - Cloudy, colder, snow just to south missing station.

**29th** - Foggy at times, rain most of the day, heavy at times, TSRA ~2 PM and 6 PM.

### **Joe Terry of Forest Glen**

**1st** - Mostly sunny and unusually warm, 71°. Though warm for Feb 1st, it was still 4 degrees below the record for the date (records go back to 1995).

**23rd** - Rather frequent lightning south and southeast just before midnight and continuing into early on the 24th.

**24th** - Brief TSRA between 1400 and 1500. One impressive cloud-to-ground discharge observed west at 2:10PM.

Cold FROPA occurred around 7 PM followed by a 20° dew point drop in 40 minutes.

### **Brian Smith of Oxon Hill**

**11th** - -RA 0000-1300; -SHSN 1500-1700; -SN 2200-2400

**12th** - -SN 0000-0100. Amounts estimated due to strong winds.

**19th** - -RA -SN 2000-2300, 0.1" SN.

### **Wes Gleason of Hollywood 3 ENE**

**2nd** - Rain early, then sunny.

**21st** - 1% ice cover on creek, shallow areas only.

**25th** - Wind 10 minute average 20 to 25 mph for 8 hours.

### **John Zyla of Ridge**

**6th** - Mostly clear, Hard Freeze this morning, Heavy Frost on grass and everywhere else, looked like snow!

**11th** - -RA 4:47-7 AM, 0.05", 7-10:27am, 0.05", Sleet 2:54-3pm, 0.01, +SN 4:54-5:15 PM, 0.2" (0.02"), then melted, occasional -SN flurries thru midnight.

**12th** - SN midnight to 2AM, 0.3" (0.01"), then clearing skies & sunny.

**13th** - Clear sky. Snow covering much of the lawn.

**24th** - TSRA, 0.02" from 12:55-1:10 AM. Cloudy skies in am, Sunny & warmer w/ afternoon +TSRA, 3:10-4:30pm, 0.33". +TSRA w/thunder and lightning at 4:20-4:30 PM.

**29th** - Cloudy, 1st TSRA 9:15 AM-12:50 PM, 0.83", 2nd TSRA, 6:45-11:25pm, 0.78".

### **Max Hutto of Smithsburg 1.5 SW**

**16th** - Cloudy, RA mid-AM through mid-afternoon, Cool, Windy.

**24th** - Overnight RA (0.31"), (2 day RA event total 0.44"), Slightly cooler, Very Windy.

**25th** - Partly cloudy, colder, very windy.

### **Greg Keefer of Hagerstown 1 E**

**1st** - Partly cloudy, warm, windy. 63° not even close to the record of 75 set in 1989.

**4th** - RA began ~2 PM, then began mixing with SN later in the afternoon then to all SN by 5 PM and fell till ~7 PM. A few -SHSN (flurries) fell later in the evening.

**8th** - Wet SN fell between 11 AM and 7 PM was briefly moderate at times toward evening.

**11th** - Periods of snow today: Midnight to 2 AM, 0.2", 9:30 AM to noon, 0.3", SHSN ~2 PM, T. Windy and colder afternoon and evening. SNSQ (snow squall) 10-11 PM, 0.1", windy with BLSN (blowing snow) and temperatures falling into upper teens.

**18th** - Sunny, mild, windy.

**29th** - Late evening lightning and thunder.

Winter 2011-12 was the 6th warmest since 1898. The winter average temperature was 37.4°. The warmest winter was 40.2° in 1931-32. Precipitation 9.08", Snowfall 5.7". A normal winter average temperature is 33.0°, precipitation 8.71", snowfall 22.2".

### **Jim Vaughn of Smithsburg 2 NE**

Winds gusted > 40 MPH on the 16th, 22nd to 25th.

Winter 2011-12 was the 4th warmest. The winter average temperature was 37.4°. The warmest winter was 39.5° in 1997-98. Precipitation 9.68", Snowfall 9.6".

A normal winter average temperature is 31.8°, precipitation 9.09", snowfall 25.5".

### **Lance Shaffer of Sterling 4 N VA**

**25th & 26th** - Gusty winds.

## MD/DE ACON Report February 2012

**PUBLIC INFORMATION STATEMENT...CORRECTED**  
**NATIONAL WEATHER SERVICE BALTIMORE MD/**  
**WASHINGTON DC**  
**347 PM EST THU MAR 1 2012**

...PUBLIC INFORMATION STATEMENT...  
...PRELIMINARY CLIMATE STATS FOR 2011-12 METEOROLOGICAL WINTER...

IN THE FOLLOWING SUMMARY...METEOROLOGICAL WINTER IS DEFINED AS THE CONTIGUOUS PERIOD SPANNING DECEMBER 1ST THROUGH THE LAST DAY OF THE FOLLOWING FEBRUARY...A PERIOD HEREAFTER DENOTED AS DJF WINTER.

FOR THIS SUMMARY...THE MID-ATLANTIC SNOWFALL SEASON SPANS A PERIOD FROM OCTOBER 1ST THROUGH MAY 1ST.

...AVERAGE TEMPERATURES THIS METEOROLOGICAL WINTER 2011-12...

FOR WASHINGTON DC...MEASURED AT REAGAN NATIONAL AIRPORT...DCA...

THE AVERAGE DJF WINTER TEMPERATURE OF 43.4F RANKS AS THE 3RD WARMEST WINTER...ON RECORD BEHIND ONLY THE DJF WINTERS OF 1931-32...44.6F AND 1889-90...44.3F.

FOR BALTIMORE MD...MEASURED AT BWI THURGOOD MARSHALL AIRPORT...BWI...

THE AVERAGE DJF WINTER TEMPERATURE OF 40.7F RANKS AS THE 7TH WARMEST WINTER ON RECORD...THE WARMEST DJF WINTER SINCE 1949-50. THE WARMEST DJF WINTER IN BALTIMORE WAS 1931-32...45.3F.

FOR DULLES AIRPORT...IAD...

THE AVERAGE DJF WINTER TEMPERATURE OF 40.1F RANKS AS WARMEST ON RECORD ...BREAKING THE PREVIOUS WARMEST DJF WINTER OF 39.8F SET IN 2001-02. THE PERIOD OF RECORD AT DULLES GOES BACK TO 1962.

...SNOWFALL...

...WASHINGTON DC...MEASURED AT DCA...

THE DJF WINTER SNOWFALL OF 2.0 INCHES IN WASHINGTON IS TIED WITH 2008-09 FOR THE 8TH LEAST SNOWIEST DJF WINTER ON RECORD. THE LOWEST DJF WINTER SNOWFALL TOTALS WERE BOTH 0.1 INCHES MEASURED DURING BOTH 1972-73 AND 1997-98.

IF NO ADDITIONAL SNOWFALL IS MEASURED THROUGH MAY 1ST AT DCA...THE CURRENT SNOWFALL SEASON WOULD RANK AS THE 3RD LEAST SNOWIEST ON RECORD...BEHIND ONLY THE 0.1 INCH DURING THE 1972-73 AND 1997-98 SNOWFALL SEASONS.

...BALTIMORE MD...MEASURED AT BWI...

THE DJF WINTER SNOWFALL OF 1.8 INCHES IN BALTIMORE RANKS AS THE 5TH LEAST SNOWIEST DJF WINTER ON RECORD. THE LOWEST DJF WINTER SNOWFALL TOTAL AT BALTIMORE IS 0.5 INCH IN 1949-50.

IF NO ADDITIONAL SNOWFALL IS MEASURED THROUGH MAY 1ST AT BWI...THE CURRENT SNOWFALL SEASON WOULD RANK AS THE 3RD LEAST SNOWIEST ON RECORD...BEHIND ONLY THE 0.7 INCH IN 1949-50 AND 1.2 INCHES IN 1972-73.

...DULLES AIRPORT...IAD...

THE DJF WINTER SNOWFALL OF 3.1 INCHES AT DULLES RANKS AS THE 5TH LEAST SNOWIEST DJF WINTER ON RECORD. THE LOWEST DJF WINTER SNOWFALL TOTAL AT DULLES IS 0.3 INCH IN 1972-73.

IF NO ADDITIONAL SNOWFALL IS MEASURED THROUGH MAY 1ST AT IAD...THE CURRENT SNOWFALL SEASON WOULD RANK AS THE 3RD LEAST SNOWIEST ON RECORD...BEHIND ONLY THE 2.2 INCHES IN 1972-73 AND 2.6 INCHES IN 2001-02.

...OTHER MISCELLANEOUS DJF WINTER STATS...

REALLY COLD DAYS THIS PAST WINTER WERE RARE. THE DAILY MAX TEMP AT DCA WAS ABOVE FREEZING THIS DJF WINTER ON ALL BUT ONE DAY...JAN 22ND...JOINING THE RANKS OF ONLY FOUR OTHER DJF WINTERS WITH ONE SUCH DAY. DURING THE WARM WINTERS OF 1931-32 AND 1997-98...EACH DAY FEATURED A MAX TEMP THAT EXCEEDED 32F.

AT DCA...AVERAGE DAILY TEMPERATURES OF 5F OR MORE BELOW NORMAL OCCURRED ON 7 DAYS THIS DJF WINTER...1 IN DEC...4 IN JAN AND 2 IN FEB. AT BWI...ONLY 6 DAYS AVERAGED 5F OR MORE BELOW NORMAL...1 IN DEC...4 IN JAN AND 1 IN FEB.

CORRECTED TO CLARIFY TERMINOLOGY OF SEASONAL VS METEOROLOGICAL WINTER AVERAGING PERIODS.

JRK/SMZ/MRK

## MD/DE ACON Report February 2012

SXUS71 KPHI 021421  
RERILG

**RECORD EVENT REPORT**  
**NATIONAL WEATHER SERVICE MOUNT HOLLY NJ**  
**922 AM EST FRI MAR 2 2012**

...FIFTH WARMEST FEBRUARY ON RECORD AT WILMINGTON...

...THIRD WARMEST METEOROLOGICAL WINTER ON RECORD AT WILMINGTON...

FEBRUARY, 2012 WAS THE FIFTH WARMEST FEBRUARY ON RECORD WITH AN AVERAGE TEMPERATURE OF 39.9 DEGREES. THE WARMEST ON RECORD OCCURRED IN 1976, WHEN THE AVERAGE TEMPERATURE WAS 41.2 DEGREES.

METEOROLOGICAL WINTER (DECEMBER, JANUARY AND FEBRUARY), 2011/2012 WAS THE THIRD WARMEST ON RECORD WITH AN AVERAGE TEMPERATURE OF 39.5 DEGREES. THE WARMEST ON RECORD OCCURRED IN 1931/1932, WHEN THE AVERAGE TEMPERATURE WAS 41.6 DEGREES.

RECORDS DATE BACK TO 1894.

\$\$

THE TWELVE WARMEST FEBRUARYS AT WILMINGTON DATING BACK TO 1894:

RANK	TEMPERATURE (DEGREES F)	YEAR
1	41.2	1976
2	41.1	1990
3	40.9	1998
4	40.4	1954
5	39.9	2012
6	39.7	1925
6	39.7	1991
8	39.4	2002
9	38.9	1997
10	38.6	1939
10	38.6	1949
10	38.6	1984

THE ELEVEN WARMEST METEOROLOGICAL WINTERS AT WILMINGTON DATING BACK TO 1894:

RANK	TEMPERATURE (DEGREES F)	YEAR
1	41.6	1931/1932
2	39.9	2001/2002
3	39.5	2011/2012

4	39.4	1997/1998
5	38.3	1990/1991
6	38.1	1949/1950
7	38.0	1948/1949
8	37.8	1932/1933
9	37.7	1952/1953
10	37.6	1972/1973
10	37.6	1998/1999

MPD

\*\*\*\*\*

SXUS71 KPHI 201522  
RERILG

**RECORD EVENT REPORT**  
**NATIONAL WEATHER SERVICE MOUNT HOLLY NJ**  
**1122 AM EDT TUE MAR 20 2012**

...SEVENTH LEAST SNOWY COLD SEASON AT WILMINGTON...

THE COLD SEASON OF 2011/2012 WAS THE SEVENTH LEAST SNOWY WITH 5.2 INCHES. THE LEAST SNOWY COLD SEASON OCCURRED IN 1949/1950, WHEN 1.0 INCH FELL.

RECORDS DATE BACK TO 1894.

\$\$

THE TEN LEAST SNOWY COLD SEASONS AT WILMINGTON DATING BACK TO 1894:

RANK	MEASURABLE SNOWFALL (INCHES)	YEARS
1	1.0	1949/1950
2	1.2	1972/1973
3	2.4	2001/2002
4	3.5	1991/1992
5	4.3	1918/1919
6	4.8	1950/1951
7	5.2	2011/2012
8	5.7	1930/1931
9	7.3	1958/1959
10	7.4	1937/1938

MPD

**MD/DE ACON Report February 2012**



**Morning of February 11 , 2012**  
**Pictures supplied by Herb Close of Manchester 1 SW, MD**

**ACON MD / DE / DC  
FEBRUARY 2012 SUMMARY**

OBSERVER	STATION COUNTY, STATE	TEMPERATURE									PEAK WIND			PRECIPITATION					SNOWFALL				OBS TIME					
		AVG MAX	AVG MIN	MEAN	MAX	DAY	MIN	DAY	MAX >=90	MAX <=32	MIN <=32	GUST	DIR	DAY	TOTAL	MAX DAY	DATE	YEAR	DAYS >=.01"	DAYS >=1"	TOTAL	MAX DAY		DATE	SEA- SON			
<u>New Castle, Delaware</u>																												
Gallagher, Gary	Bear 2 SW	49.0	29.6	39.3	67	1	20	12	0	0	22	44	W	25	1.88	1.02	29	4.72	7	1	2.3	2.0	11	5.2	2400			
Legates, David	Middletown 6 N	49.2	30.5	39.9	68	1	20	12	0	1	21	30		25	2.08	1.00	29	4.63	12	1					2400			
NWS Wilmington	New Castle Co. Apt.	48.9	31.0	40.0	67	1	18	12	0	1	21	46	W	25	2.09	1.14	29	4.64	7	1	2.3	2.0	11	5.2	2400			
UofDE AG FARM DEOS***	Newark	48.0	30.7	39.4	67	1	19	12	0	1	21	28		25	1.97	1.11	29	4.90	8	1					2400			
U of D REC DEOS***	Townsend 4 W	47.8	30.1	39.0	66	1	19	12	0	1	21	30		25	1.79	0.93	29	4.40	10	0					2400			
<u>Sussex, Delaware</u>																												
NWS Georgetown	Sussex Co. Airport	51.9	32.1	42.0	66	1	22	12+	0	1	20	56	SSE	10	2.61	0.80	29	4.52	11	0					2400			
U of D REC DEOS***	Georgetown 5 SW	49.7	30.6	40.2	65	1	20	13	0	1	23	33		25	3.05	1.21	29	4.66	13	1					2400			
U of D REC DEOS***	Harbeson 8 S	49.8	30.5	40.2	65	1	20	13	0	1	22	28		29	2.98	1.15	29	4.92	12	1					2400			
U of D DEOS***	Rehoboth Beach Bwk	49.2	35.3	42.3	66	1	21	12	0	1	6	28		20	2.56	1.15	29	4.40	12	1					2400			
<u>Allegany, Maryland</u>																												
Latta, Greg	Frostburg	42.1	24.6	33.4	58	1	9	12	0	4	25				1.65	0.46	24	5.03	10	0	9.1	4.1	5	31.2	0700			
Mullins, Nate**	LaVale	45.0	30.1	37.6	62	27	15	12	0	1	20				2.75	1.43	29	5.99	10	1	4.8	2.0	4	16.2	2400			
<u>Anne Arundel, Maryland</u>																												
Hanson, Dan	Pasadena 2 N	50.1	30.8	40.5	70	1	18	13	0	1	19	33	WNW	25	2.35	1.49	29	4.62	10	1	0.0	0.0		0.7	2400			
Jug Bay Wetlands	Lothian	51.6	30.4	41.0	70	1	17	13	0	1	19	22		17	3.21	1.48	29	5.29	13	1					2400			
NWS Baltimore	BWI Airport	51.1	32.1	41.6	70	1	20	13	0	1	16	48	W	24+	2.42	1.64	29	4.96	8	1	0.5	0.5	11	1.8	2400			
Stoudt, Jeff	Laurel 2 E	50.9	32.8	41.9	68	1	20	13	0	1	14				2.54	1.59	29	4.95	11	1	0.7	0.6	11	2.9	2400			
<u>Baltimore, Maryland</u>																												
Sharrow, Marty	Owings Mills 2 SE	48.0	30.4	39.2	64	1	17	12	0	1	20				1.85	1.21	29	3.76	8	1	2.7	1.2	11	5.4	2400			
<u>Baltimore City, Maryland</u>																												
Manfre, Joe	Baltimore 2 SE	STATION TEMPORARLY CLOSED																						2400				
Maryland Science Ctr	Baltimore Inner Harbor	53.0	38.8	45.9	71	1	25	12+	0	0	3				2.39	1.56	29	4.14	7	1					2400			
<u>Carroll, Maryland</u>																												
Close Jr, Herb	Manchester 1 SW	46.6	29.3	38.0	64	1	14	12	0	1	20				2.46	1.20	29	4.73	7	1	8.0	3.4	11	21.6	2300			
Hartsock, Ralph	Westminster 4 SSE	47.7	31.1	39.4	63	1	17	12	0	1	22	52	WNW	25	1.73	0.85	29	4.03	6	0	3.4	1.2	11	7.9	1900			
Miller, Bobby	Millers 4 NE	47.7	29.9	38.8	64	1	16	12	0	1	21	52	WSW	25	2.32	0.90	29	5.05	11	0	6.4	2.0	8	18.1	1800			
<u>Charles, Maryland</u>																												
Brumback, Marty	Bryans Road 2 ESE	52.3	34.0	43.2	71	1	19	13	0	1	12	36	WNW	12	2.82	1.39	29	4.45	13	1	1.1	0.9	19	2.7	2355			
<u>Frederick, Maryland</u>																												
Glass, Eric	Emmitsburg 2 SE	48.1	27.9	38.0	63	1+	19	12	0	1	22				0.93	0.31	24	3.37	8	0	2.0	1.0	9	7.0	0700			
<u>Howard, Maryland</u>																												
Giannola, Rich	Laurel JHU / APL	STATION CLOSED 2/1/2012													1.83												1.8	2400

**ACON MD / DE / DC  
FEBRUARY 2012 SUMMARY**

OBSERVER	STATION COUNTY, STATE	TEMPERATURE									PEAK WIND			PRECIPITATION					SNOWFALL				OBS TIME		
		AVG MAX	AVG MIN	MEAN	MAX	DAY	MIN	DAY	MAX >=90	MAX <=32	MIN <=32	GUST	DIR	DAY	TOTAL	MAX DAY	DATE	YEAR	DAYS >=.01"	DAYS >=1"	TOTAL	MAX DAY		DATE	SEA- SON
<i>Montgomery, Maryland</i>																									
Berger, Ron	Norbeck 1 SE	49.8	32.1	41.0	66	1	20	12+	0	1	17				2.49	1.55	29	4.74	9	1	1.2	0.5	11	3.1	2200
Cohen, Rob	Potomac 4 N	50.3	32.7	41.5	67	1	20	13	0	1	17				2.38	1.36	29	4.76	9	1	0.7	0.5	11	2.0	2100
Giannola, Rich	Olney 1 S	49.2	31.2	40.2	65	1	18	12	0	1	15				2.53	1.75	29	4.65	7	1	1.9	1.3	11	4.2	2400
Holden, Richard	Clarksburg 2 ENE	48.5	32.1	40.3	65	1	19	11+	0	1	17	49	W	24	3.03	2.00	29	4.96	8	1	5.6	2.3	11	11.8	2400
McGinnis, Alex	Rockville 2 W	50.3	32.5	41.4	68	1	19	11+	0	1	15				2.49	1.51	29	5.05	9	1	1.5	1.3	11	3.9	2400
Rossen, Stan	Glenmont 1 NNE	52.0	31.3	41.7	70	1	19	13	0	1	17	27		11	2.46	1.45	29	4.73	9	1	0.9	0.6	11	2.7	2400
Scafide, Tony	Bethesda	50.1	33.5	41.8	68	1	20	12	0	1	14	29		12	2.45	1.39	29	5.02	10	1					2400
Shaw, Kevin	Gaithersburg 2 WNW	50.2	32.2	41.2	66	1	21	11+	0	1	17	32	SW	24	2.62	1.81	29	4.69	7	1	2.7	1.3	11	5.0	2400
Terry, Joe	Forest Glen	52.8	33.0	42.9	71	1	21	11+	0	0	15	39	SW	25	2.33	1.43	29	4.97	10	1	0.5	0.5	11	3.0	2400
<i>Prince Georges, Maryland</i>																									
Smith, Brian	Oxon Hill	51.9	34.0	43.0	69	1	21	11+	0	1	12				2.55	1.40	29	4.65	11	1	0.4	0.2	11	2.8	2300
<i>St. Marys, Maryland</i>																									
Gleason, Wes	Hollywood 3 ENE	51.3	35.6	43.5	68	1	22	13	0	0	8	40	W	25	3.14	1.39	29	4.57	15	1	0.0	0.0		0.1	2400
Zyla, John	Ridge	51.6	36.5	44.1	70	24	21	13	0	0	9	29	NE	20	3.74	1.61	29	5.68	13	1	1.4	0.8	19	1.7	2400
<i>Washington, Maryland</i>																									
Hutto, Max	Smithsburg 1.5 SW	47.3	28.2	37.8	63	27	19	12	0	1	21	33		24	2.90	1.61	29	6.27	10	1	3.7	1.5	8	12.8	2400
Keefer, Greg	Hagerstown 1 E	47.6	29.0	38.3	64	27	19	11+	0	1	19	53	W	24	2.71	1.44	29	5.47	8	1	2.9	1.2	8	9.4	2400
Vaughn, Jim	Smithsburg 3 NE	46.1	29.0	37.6	62	27	11	12	0	1	21	52	NE	24	2.64	1.51	29	5.72	9	1	6.1	1.9	8	16.9	2400
<i>Wicomico, Maryland</i>																									
NWS Salisbury	Wicomico Co. Apt	53.4	31.8	42.6	77	24	18	13	0	1	21	48	WSW	24	3.60	1.54	29	5.69	12	1					2400
<i>Arlington, Virginia</i>																									
NWS Washington National	National Airport	52.4	36.3	44.4	72	1	23	11+	0	0	5	49	NNW	12	2.33	1.44	29	4.52	10	1	0.3	0.2	11	2.0	2400
<i>Loudon, Virginia</i>																									
NWS Washington Dulles	Dulles Airport	51.1	30.8	41.0	69	1	17	13	0	1	17	51	WNW	24	2.24	1.35	29	4.09	9	1	1.4	1.2	11	3.7	2400
Shaffer, Lance	Sterling 4 N	50.7	33.2	42.0	69	1	20	12	0	0	13				<u>1.21</u>	1.00	29	<u>2.71</u>	3	1	1.2	1.2	11	3.8	2400
<i>Tucker, West Virginia</i>																									
Leshner, Dave	Davis 3 SE WV	38.3	20.9	29.6	55	25	0	12	0	9	26				3.88	0.55	24	9.49	17	0	25.0	8.5	12	101.2	0700
<b>SECTION AVERAGE*</b>		<b>49.6</b>	<b>31.6</b>	<b>40.6</b>											<b>2.45</b>		<b>4.79</b>				<b>2.5</b>		<b>7.1</b>		

**NOTES:**

\*SECTIONAL AVERAGE DOES NOT INCLUDE DATA FROM WEST VIRGINIA.

\*\*OBSERVER FOR LAVALE IS SCOTT LOHR. DATA COMPILED BY NATE MULLINS.

\*\*\* DATA FROM DEOS (DELAWARE ENVIRONMENTAL OBSERVING SYSTEM) PERMISSION GRANTED FOR USE OF DATA

\*\*\* REC= UNIVERSITY OF DELAWARE RESEARCH AND EDUCATION CENTER

M OR UNDERLINE= MISSING DATA

> = INCLUDED IN NEXT DAYS DATA

*ITALIC* = ESTIMATED DATA

+ = FIRST OF SEVERAL OCCURANCES

ANY PRECIP. WHICH FELL AFTER OBS. ON THE 29th IS INCLUDED IN 3/1 PRECIP.DATA.

WINTER TYPE PRECIPITATION FROM STATIONS WITH TIPPING BUCKET RAIN GAUGE MAY SHOW UNDER CATCH. ALSO AMOUNTS CAUGHT MAY BE NOTED IN THE FOLLOWING DAYS AS IT MELTS.

National Weather Service station data listed herein is preliminary and may be subject to change. The data has not been certified and cannot be used in legal actions.

Only reports certified by the National Climatic Data Center in Asheville, NC may be used for these purposes.

Accuracy of Data from ACON Observers not guaranteed.

GARY GALLAHER 3/30/12



**ACON MD / DE / DC**  
**FEBRUARY 2012 DAILY TEMPERATURES**

STATION	1	2	3	4	5	6	7	8	9	10	11	12	13	14	15	16	17	18	19	20	21	22	23	24	25	26	27	28	29			AVG	OBS TIME		
BEAR 2 SW, DE GALLAHER	67	50	47	45	44	51	51	40	43	45	38	33	46	54	51	44	52	53	45	47	51	60	63	51	44	47	59	53	48			49.0	2400		
MIDDLETOWN 6 N DE LEGATES	68	50	47	45	44	52	52	40	44	46	37	32	46	54	52	43	52	54	45	47	51	61	64	51	45	48	60	52	48			49.2	2400		
WILMINGTON , DE NWS NEW CASTLE CO APT	67	50	47	45	45	52	52	40	43	45	38	32	45	51	51	43	52	53	46	48	49	60	63	51	45	47	60	53	45			48.9	2400		
NEWARK AG FARM, DE U OF DE DEOS	46	39	28	27	30	26	30	30	29	23	25	18	23	32	32	30	35	30	27	28	26	38	45	42	35	29	29	35	32			31.0	EST		
TOWNSEND 4 W, DE U of D REC DEOS	66	49	45	44	41	49	50	40	42	43	36	31	43	53	50	44	51	52	43	45	49	59	62	51	43	46	59	50	51			47.8	2400		
GEORGETOWN, DE NWS SUSSEX CO APT	49	42	29	26	28	24	33	31	30	30	27	22	22	32	32	32	31	27	34	28	23	44	47	47	36	30	30	34	32			32.1	EST		
GEORGETOWN, DE U of D REC DEOS	65	51	45	46	42	49	52	44	43	49	41	31	43	54	52	49	53	54	42	45	50	60	63	63	45	47	58	53	57			49.7	2400		
HARBESON 8 S, DE U of D REC DEOS	47	40	27	25	26	22	32	29	29	31	26	21	20	32	30	29	30	25	32	26	20	41	44	45	35	29	31	32	31			30.6	EST		
HARBESON 8 S, DE U of D REC DEOS	65	50	46	49	41	49	52	44	43	50	41	31	43	53	50	49	53	54	44	46	50	61	63	60	46	47	58	53	57			49.8	2400		
REHOBOTH BEACH BWK U of D DEOS	47	41	27	25	27	22	31	30	27	28	27	21	20	32	29	29	29	25	34	25	21	43	46	46	35	29	28	32	31			30.5	EST		
REHOBOTH BEACH BWK U of D DEOS	66	56	44	48	41	51	50	43	45	51	44	32	44	51	48	46	52	50	44	45	49	59	65	50	46	42	60	50	56			49.2	2400		
FROSTBURG LATTA	49	42	33	33	31	28	38	36	33	34	26	21	23	36	38	36	37	35	37	34	31	45	46	42	35	33	37	40	39			35.3	EST		
FROSTBURG LATTA	58	51	43	47	37	36	44	44	31	34	33	31	18	35	40	42	42	43	50	36	42	45	53	53	51	29	43	58	53			42.1	0700		
LAVALE MULLINS**	48	38	25	25	28	22	23	25	20	20	25	9	10	15	27	30	32	25	22	21	21	25	35	38	23	20	20	23	23			24.6	EST		
LAVALE MULLINS**	58	50	51	36	36	47	48	36	40	37	35	26	41	44	47	38	46	52	39	45	46	56	60	49	38	46	62	55	42			45.0	2400		
PASADENA 2 N HANSON	49	31	30	30	33	22	32	29	26	28	17	15	23	32	37	34	35	26	28	28	25	39	45	36	29	28	23	29	34			30.1	EST		
PASADENA 2 N HANSON	70	53	49	43	44	54	55	39	45	44	39	32	47	54	54	45	53	52	44	48	48	61	65	52	45	49	62	54	51			50.1	2400		
LOTHIAN JUG BAY	47	40	27	27	26	24	31	28	28	25	24	22	18	32	34	33	30	26	34	27	22	36	46	43	34	32	28	35	32			30.8	EST		
LOTHIAN JUG BAY	70	55	51	45	43	52	55	41	46	48	42	31	48	57	55	47	54	57	43	49	51	64	66	53	47	50	65	56	56			51.6	2400		
BALTIMORE NWS BWI APT	49	37	28	27	27	24	30	27	28	26	22	22	17	32	33	34	32	26	33	26	22	35	46	45	35	27	28	34	32			30.4	EST		
BALTIMORE NWS BWI APT	70	57	50	45	45	53	55	40	45	46	41	32	48	55	54	45	53	57	44	49	49	63	65	54	45	49	64	56	53			51.1	2400		
LAUREL 2 E STOUDT	50	39	31	29	30	27	32	31	30	27	24	22	20	33	36	35	34	28	34	29	23	36	48	43	34	32	25	36	34			32.1	EST		
LAUREL 2 E STOUDT	68	54	49	45	44	53	55	40	46	47	41	30	48	53	54	46	53	58	44	49	50	63	65	55	44	49	64	56	52			50.9	2400		
OWINGS MILLS 2SE SHARROW	48	40	31	29	30	27	35	34	29	29	23	21	20	34	37	36	38	28	34	29	24	40	47	43	35	31	28	36	34			32.8	EST		
OWINGS MILLS 2SE SHARROW	64	51	47	42	41	50	51	38	41	43	37	29	44	53	50	43	48	57	45	47	47	60	61	52	42	48	61	53	47			48.0	2400		
BALTIMORE 2SE MANFRE	45	36	29	27	32	24	30	28	25	26	23	17	18	31	36	32	36	28	30	27	22	37	44	40	34	29	27	32	36			30.4	EST		
BALTIMORE 2SE MANFRE																																		2400	EST
BALT INNER HARBOR MD SCIENCE CENTER	71	59	51	47	46	56	56	44	47	49	43	34	49	56	55	48	54	59	48	49	52	65	66	57	47	51	67	57	53			53.0	2400		
BALT INNER HARBOR MD SCIENCE CENTER	52	44	39	38	38	34	41	37	34	36	27	25	25	40	45	43	41	38	39	37	35	44	51	47	38	37	36	41	43			38.8	EST		
MANCHESTER 1SW CLOSE	64	50	47	40	41	49	50	35	41	40	37	28	42	51	50	41	49	54	42	44	44	59	61	50	39	46	61	51	45			46.6	2300		
MANCHESTER 1SW CLOSE	45	34	26	31	28	25	30	29	21	24	17	14	18	32	34	34	35	27	28	26	26	38	45	37	29	27	27	28	35			29.3	EST		
WESTMINSTER 4 SSE HARTSOCK	63	53	45	45	45	47	49	38	40	46	44	31	42	52	48	45	46	54	45	44	47	59	61	49	43	45	61	51	46			47.7	1900		
WESTMINSTER 4 SSE HARTSOCK	47	42	29	29	31	26	31	30	25	26	29	17	20	31	35	31	38	29	29	29	25	37	45	42	31	29	27	31	31			31.1	EST		
MILLERS 4NE MILLER	64	56	47	40	41	49	50	41	41	40	36	28	43	51	49	41	49	54	49	45	45	59	60	52	47	46	61	55	45			47.7	1800		
MILLERS 4NE MILLER	46	40	27	30	31	23	30	27	23	24	27	16	17	30	35	29	37	26	27	28	23	36	44	38	32	28	28	31	34			29.9	EST		
BRYANS ROAD 2 ESE BRUMBACK	71	58	52	45	43	53	56	41	46	49	42	32	48	54	55	46	54	58	45	48	50	63	68	66	48	49	65	55	58			52.3	2355		
BRYANS ROAD 2 ESE BRUMBACK	51	41	33	32	29	26	38	34	29	30	23	21	19	35	38	36	38	29	33	31	26	43	45	45	36	31	35	39	39			34.0	EST		
EMMITSBURG 2 SE GLASS	63	63	51	48	41	42	51	52	35	42	42	38	30	45	49	49	43	50	56	42	47	47	59	62	50	41	45	61	52			48.1	0700		
EMMITSBURG 2 SE GLASS	34	36	31	26	32	22	23	27	23	24	26	19	21	25	33	30	33	25	27	30	20	21	35	40	33	31	25	27	30			27.9	EST		

**ACON MD / DE / DC  
FEBRUARY 2012 DAILY TEMPERATURES**

STATION	1	2	3	4	5	6	7	8	9	10	11	12	13	14	15	16	17	18	19	20	21	22	23	24	25	26	27	28	29		AVG	OBS TIME
LAUREL JHU / APL GIANNOLA																																2400 EST
NORBECK 1 SE BERGER	66	55	50	43	43	52	53	40	44	45	39	28	46	52	53	44	50	57	45	48	48	61	64	55	45	48	64	55	51		49.8	2200 EST
POTOMAC 4N COHEN	67	56	50	43	43	53	53	40	45	45	40	28	47	54	52	45	51	57	46	48	50	63	65	55	44	49	64	55	50		50.3	2100 EST
OLNEY 1 S GIANNOLA	65	54	50	42	42	53	53	38	43	44	38	28	46	52	52	43	>	>	>	56	46	60	63	54	41	48	62	54	51		49.2	2400 EST
CLARKSBURG 2ENE HOLDEN	47	39	27	30	29	25	29	29	27	26	23	18	19	33	35	36	>	>	>	28	25	37	44	41	35	30	30	35	35		48.5	2400 EST
ROCKVILLE 2 W McGINNIS	68	56	51	43	42	55	53	39	44	45	39	28	47	55	53	43	52	58	44	48	48	63	65	54	44	49	64	56	53		50.3	2400 EST
GLENMONT 1NNE ROSSEN	49	40	32	31	34	25	34	32	28	31	19	19	20	33	38	37	36	30	33	30	26	38	44	41	31	29	30	35	38		32.5	2400 EST
BETHESDA SCAFIDE	70	56	51	44	44	55	55	40	47	48	40	31	50	56	54	45	54	60	44	49	51	64	67	55	47	51	67	58	55		52.0	2400 EST
BETHESDA SCAFIDE	45	40	30	29	28	24	29	30	29	27	22	21	19	32	35	35	35	28	34	28	23	38	45	42	34	30	27	36	34		31.3	2400 EST
BETHESDA SCAFIDE	68	55	49	44	42	53	54	40	44	46	40	30	48	53	51	45	52	58	43	47	48	61	64	55	43	48	65	54	55		50.1	2400 EST
GAITHERSBURG 2WNW SHAW	49	41	31	32	30	26	34	33	29	30	21	20	22	34	39	40	37	31	34	31	28	40	46	43	33	30	31	37	39		33.5	2400 EST
GAITHERSBURG 2WNW SHAW	66	55	49	44	43	53	54	39	45	44	41	29	47	52	52	44	52	58	43	48	49	62	64	55	44	48	65	55	54		50.2	2400 EST
FOREST GLEN TERRY	47	41	30	29	29	25	29	30	29	27	21	21	23	32	36	36	37	28	34	29	25	37	47	42	34	32	29	36	39		32.2	2400 EST
FOREST GLEN TERRY	71	59	53	45	45	55	57	42	48	49	43	33	50	50	56	46	56	59	46	52	50	65	67	57	46	51	66	59	56		52.8	2400 EST
OXON HILL SMITH	47	39	29	31	29	26	33	31	30	28	21	21	21	36	39	40	36	30	34	30	27	39	47	43	33	31	32	36	37		33.0	2400 EST
OXON HILL SMITH	69	58	51	45	44	52	55	42	46	47	42	30	48	54	54	46	54	58	49	50	51	63	66	57	47	49	65	57	57		51.9	2300 EST
HOLLYWOOD 3 ENE GLEASON	48	41	34	31	31	26	37	34	31	31	21	21	21	36	40	40	40	29	33	32	27	40	44	44	35	32	33	38	37		34.0	2400 EST
HOLLYWOOD 3 ENE GLEASON	68	54	50	45	43	50	56	42	46	46	42	33	46	53	55	49	54	53	46	47	52	61	65	63	48	47	62	53	58		51.3	2400 EST
RIDGE ZYLA	51	42	34	33	31	29	37	37	35	33	26	23	22	37	37	37	37	30	33	31	28	45	48	48	37	33	37	41	41		35.6	2400 EST
RIDGE ZYLA	68	57	47	47	42	51	54	42	45	44	44	35	48	55	54	48	55	54	46	45	51	62	66	70	48	48	63	51	58		51.6	2400 EST
SMITHSBURG 1.5 SW HUTTO	51	45	35	36	32	38	38	37	32	36	24	22	21	39	41	41	40	36	32	32	31	44	46	47	36	30	37	40	40		36.5	2400 EST
SMITHSBURG 1.5 SW HUTTO	61	49	48	42	42	51	50	37	43	41	36	27	45	50	47	44	50	57	44	46	47	60	60	52	39	47	63	52	43		47.3	2400 EST
HAGERSTOWN 1E KEEFER	40	36	27	25	27	22	27	25	23	21	19	22	30	31	31	33	24	25	25	21	36	44	37	33	29	24	29	33		28.2	2400 EST	
HAGERSTOWN 1E KEEFER	63	49	48	42	42	51	52	37	43	41	36	29	46	47	48	44	50	57	43	46	47	60	61	52	40	46	64	52	43		47.6	2400 EST
SMITHSBURG 3 NE VAUGHN	41	37	28	26	27	23	27	26	23	22	19	19	19	30	36	33	37	25	27	25	22	35	39	39	33	31	27	29	35		29.0	2400 EST
SMITHSBURG 3 NE VAUGHN	60	47	47	41	40	49	49	37	42	39	34	26	43	47	45	45	48	56	41	44	48	57	58	51	39	44	62	50	48		46.1	2400 EST
SMITHSBURG 3 NE VAUGHN	45	33	31	28	30	20	31	28	24	25	12	11	17	32	33	35	37	29	26	24	27	39	43	32	27	26	32	29	35		29.0	2400 EST
SALISBURY NWS WICOMICO CO APT	68	54	50	51	45	50	57	48	46	52	45	32	45	57	56	52	56	57	45	48	53	63	67	77	49	49	60	56	60		53.4	2400 EST
SALISBURY NWS WICOMICO CO APT	50	40	29	27	27	24	32	29	27	27	23	18	33	32	32	28	34	28	22	45	47	49	36	29	28	31	30		31.8	2400 EST		
WASH NATIONAL NWS ASOS	72	58	52	46	45	53	56	43	47	47	43	33	50	56	55	47	54	59	45	50	50	63	67	57	47	49	64	56	56		52.4	2400 EST
WASH NATIONAL NWS ASOS	48	42	37	35	35	29	40	37	33	33	23	23	24	37	40	41	39	34	35	34	32	43	47	46	35	34	36	40	40		36.3	2400 EST
WASH DULLES NWS ASOS	69	57	50	44	43	52	56	41	46	45	42	31	49	53	53	45	53	59	43	48	50	62	66	58	45	48	64	54	56		51.1	2400 EST
WASH DULLES NWS ASOS	50	41	29	26	26	22	34	29	29	29	21	20	17	31	34	34	32	26	35	26	22	35	43	42	33	28	27	37	34		30.8	2400 EST
STERLING 4 N SHAFFER	69	58	51	45	44	44	51	42	47	46	43	42	49	54	54	55	54	59	44	49	51	62	M	M	M	M	M	M	M		50.7	2400 EST
STERLING 4 N SHAFFER	52	47	31	27	36	27	24	31	30	30	34	20	22	32	38	36	39	30	36	32	26	36	M	M	M	M	M	M	M		33.2	2400 EST
DAVIS 3 SE WV LESHER	53	43	40	47	39	32	40	41	30	30	28	23	13	27	38	42	41	34	44	31	40	43	47	49	55	20	39	49	52		38.3	0700 EST
DAVIS 3 SE WV LESHER	39	39	23	23	26	16	16	25	18	15	19	0	3	13	25	25	25	25	20	17	17	30	30	33	16	12	12	21	22		20.9	2400 EST

**ACON MD / DE / DC  
FEBRUARY 2012 DAILY PRECIPITATION**

STATION	1	2	3	4	5	6	7	8	9	10	11	12	13	14	15	16	17	18	19	20	21	22	23	24	25	26	27	28	29	TOTAL	OBS TIME	
BEAR 2 SW, DE GALLAHER	T			0.11				0.09 0.3	T	0.01	0.27 2.0			T	T	0.14					T			0.24					1.02	1.88 2.3	2400 EST	
MIDDLETOWN 6 N DE LEGATES	0.01			0.14			0.01	0.06	0.05	0.01	0.33			0.02		0.12	0.01							0.32					1.00	2.08 -	2400 EST	
WILMINGTON, DE NWS NEW CASTLE CO APT	T	T		0.08				0.16 0.3	T	0.01	0.30 2.0			T		0.13						T	T	0.27					1.14	2.09 2.3	2400 EST	
NEWARK AG FARM, DE U OF DE DEOS				0.10				0.08	0.08	0.01	0.25					0.14								0.20					1.11	1.97 -	2400 EST	
TOWNSEND 4 W, DE U of D REC DEOS	0.02			0.19				0.09	0.01		0.33	0.01				0.09								0.11	0.01				0.93	1.79 -	2400 EST	
GEORGETOWN, DE NWS SUSSEX CO APT	T	0.34		0.14				0.22			0.10	T				0.08			0.09	0.02		0.08	0.21	0.53					0.80	2.61 -	2400 EST	
GEORGETOWN, DE U of D REC DEOS	0.01	0.26		0.12				0.20	0.01		0.10					0.05			0.10	0.08		0.06	0.18	0.67					1.21	3.05 -	2400 EST	
HARBESON 8 S, DE U of D REC DEOS	0.01	0.31		0.14				0.27			0.12					0.10			0.06	0.02		0.11	0.24	0.45					1.15	2.98 -	2400 EST	
REHOBOTH BEACH BWK U of DE DEOS		0.23		0.14				0.19			0.12					0.11	0.01		0.02	0.01		0.05	0.25	0.28					1.15	2.56 -	2400 EST	
FROSTBURG LATTA	T	T			0.43 4.1	0.02 T			0.18 1.5		0.07 0.8	0.01 1.0	T 0.1			0.02 0.2	T 0.35						0.05	0.46	0.06 1.4	T T				1.65 9.1	0700 EST	
LAVALE MULLINS**				0.39 2.0	T T			0.15 0.5		0.02 0.5	0.02 0.8					0.01	0.29					T	0.01	0.31	0.12 1.0	T			1.43	2.75 4.8	2400 EST	
PASADENA 2N HANSON	0.02	0.04		0.15	0.01			0.08			0.26			0.01		0.07								0.22					1.49	2.35 0.0	2400 EST	
LOTHIAN JUG BAY	0.04	0.20		0.16		0.01		0.10		0.01	0.27					0.10	0.02		0.12	0.02				0.68					1.48	3.21 0.0	2400 EST	
BWI NWS ASOS	0.01	T		0.17 T	T T			0.09 T		0.01	0.22 0.5	T T		T		0.12							T	0.16	T T				1.64	2.42 0.5	2400 EST	
LAUREL 2 E STOUDT	0.04	0.06		0.12 0.1	0.05 T			0.12 T		0.01	0.23 0.6			0.01		0.14							T	0.17	T T				1.59	2.54 0.7	2400 EST	
OWINGS MILLS 2SE SHARROW	0.01	T		0.13 1.0	T T			0.07 0.5		0.01	0.16 1.2			T		0.19								0.07	T T				1.21	1.85 2.7	2400 EST	
BALTIMORE 2SE MANFRE																																2400 EST
BALT INNER HARBOR MD SCIENCE CENTER				0.21				0.07			0.23			0.02		0.13								0.17						1.56	2.39 -	2400 EST
MANCHESTER 1SW CLOSE	T	T		0.18 1.4				0.19 2.1	T 0.2	0.09 0.8	0.25 3.4	T T		T		0.16							0.39	T 0.1					1.20	2.46 8.0	2300 EST	
WESTMINSTER 4 SSE HARTSOCK				0.25 1.0				0.14 1.0			> 1.2	0.13 0.2				0.20								0.16						0.85	1.73 3.4	1900 EST
MILLERS 4NE MILLER	T			0.13 1.1	0.03 0.3			0.23 2.0	0.02 0.2	T T	0.22 1.8	0.05 0.7		T T	T T	0.20	0.01							0.51	0.02 0.3				0.90	2.32 6.4	1800 EST	
BRYANS ROAD 2 ESE BRUMBACK	0.01	0.16		0.10	0.01	0.01		0.14			0.21	0.02 0.2				0.13			0.15 0.9				0.03	0.46	T T				1.39	2.82 1.1	2355 EST	
EMMITSBURG 2 SE GLASS					0.10 1.0	0.03			0.01 1.0		0.01	0.20				T	0.25							0.31	0.02					0.93 2.0	0630 EST	

**ACON MD / DE / DC  
FEBRUARY 2012 DAILY PRECIPITATION**

STATION	1	2	3	4	5	6	7	8	9	10	11	12	13	14	15	16	17	18	19	20	21	22	23	24	25	26	27	28	29	TOTAL	OBS TIME	
LAUREL JHU / APL GIANNOLA																															2400 EST	
NORBECK 1 SE BERGER	0.02	0.08		0.17 0.3	T T			0.12 0.1		T	0.23 0.5	0.02 0.3				0.18								0.12					1.55	2.49 1.2	2200 EST	
POTOMAC 4N COHEN	0.02	0.10		0.15 T	T T			0.16 T			0.18 0.5	0.05 0.2		T		0.22								0.14 T	T				1.36	2.38 0.7	2100 EST	
OLNEY 1 S GIANNOLA	0.01			0.16 0.4	T T			0.11 0.2		>	0.26 1.3			T		0.16								0.08					1.75	2.53 1.9	2400 EST	
CLARKSBURG 2ENE HOLDEN	T	T		0.27 1.6	0.01 0.2			0.17 1.2		0.03 0.2	0.21 2.3	T 0.1		T		0.30								0.04 T	T				2.00	3.03 5.6	2400 EST	
ROCKVILLE 2 W McGINNIS		0.08		0.17 0.1	0.01 T			0.15 0.1		0.05 T	0.23 1.3			T		0.17								T	0.12 T				1.51	2.49 1.5	2400 EST	
GLENMONT 1NNE ROSSEN	0.02	0.09		0.15 0.1	T T			0.11 0.1		0.02	0.17 0.6	T 0.1		T		0.15								T	0.30				1.45	2.46 0.9	2400 EST	
BETHESDA SCAFIDE	0.01	0.15		0.14		0.01		0.12		0.02	0.18					0.16									0.27					1.39	2.45 -	2400 EST
GAITHERSBURG 2WNW SHAW	T	T		0.18 0.4	T T			0.14 1.0		0.03 T	0.19 1.3	T T		T		0.22								0.05 T	T				1.81	2.62 2.7	2400 EST	
FOREST GLEN TERRY	0.02	0.11		0.13	T			0.10 T		0.01	0.15 0.5	T T		T		0.15								0.01	0.22				1.43	2.33 0.5	2400 EST	
OXON HILL SMITH	0.05	0.12		0.11 T	0.01 T			0.12 T		T	0.19 0.2	0.01 0.1				0.11								T	0.30 T				1.40	2.55 0.4	2300 EST	
HOLLYWOOD 3 ENE GLEASON		0.21		0.07	0.02	0.02		0.06			0.10					0.06	0.01			0.24	0.06	0.00	0.21	0.14	0.54	0.01			1.39	3.14 0.0	2400 EST	
RIDGE ZYLA		0.42		0.08	0.01			0.05			0.13 0.2	0.01 0.3				0.11				0.63 0.8	0.10 0.1		0.15	0.09	0.35				1.61	3.74 1.4	2400 EST	
SMITHSBURG 1.5 SW HUTTO				0.12 0.3	0.09 0.2			0.19 1.5		0.08 0.8	0.06 0.9					0.30	0.01							0.13	0.31				1.61	2.90 3.7	2400 EST	
HAGERSTOWN 1E KEEFER				0.21 0.6	T T			0.21 1.2		0.09 0.5	0.09 0.6	T T				0.25								0.14	0.28 T	T			1.44	2.71 2.9	2400 EST	
SMITHSBURG 3 NE VAUGHN				0.14 1.5				0.19 1.9		0.16 1.6	0.10 1.0					0.26								0.06	0.21 0.1	0.01			1.51	2.64 6.1	2400 EST	
SALISBURY NWS WICOMICO CO APT	T	0.33		0.10	0.01			0.19			0.07	T				0.08				0.38	0.10		0.11	0.07	0.62				1.54	3.60 0.0	2400 EST	
WASH NATIONAL NWS ASOS	0.02	0.09		0.08	T			0.11 T		T	0.10 0.2	0.01 0.1				0.09								T	0.31 T	T			1.44	2.33 0.3	2400 EST	
WASH DULLES NWS ASOS	T	0.09		0.09 T	0.01 T			0.10 0.2		0.03	0.17 1.2	T T		T		0.20								T	0.20 T	T			1.35	2.24 1.4	2400 EST	
STERLING 4 N SHAFFER	DAILY PRECIPITATION INCOMPLETE FOR MONTH										0.12 1.2													0.09					1.00	1.21 1.2	2400 EST	
DAVIS 3 SE WV LESHER	0.11	0.23			0.34 1.7	0.02 0.3			0.33 3.3		0.22 2.0	0.54 8.5	0.09 1.3			0.19 1.6	0.07	0.44						0.04 T	0.21 0.2	0.55 3.3	0.29 2.8	0.16		0.05	3.88 25.0	0700 EST