



<http://www.jhuapl.edu/weather/education/ACONdata.html>

ATLANTIC COAST OBSERVER NETWORK, MD / DE / DC CHAPTER WITH DATA FROM NEARBY AREAS

SANDY - "WE DODGED A BULLET"

October saw dense fog, humid / muggy conditions, scattered heavy showers, first freeze of the season, a tornado, and was capped off by Post Tropical Storm Sandy.

The month began warm with dense fog on several days. Rains, mostly light, fell on many of the first nine days. Heavy rains upwards of three inches fell on the 2nd from Montgomery County northwards into Carroll County. **Kevin Shaw** of **Gaithersburg 2 WNW** reported 3.07", **Ralph Hartsock** of **Westminster 4 SSE** 2.53", and **Bobby Miller** of **Millers 4 NE** 2.50".

The 3rd and the 5th were the warmest days of the month at many locations. Temperatures on those two days rose close to or above 80°. The 3rd was quite humid. Minimum temperatures on the 3rd in the eastern portions were in the upper 60's to mid 70's.

Dry air, a cloudless sky, and light winds the evening of the 12th and morning of the 13th made for ideal radiation cooling conditions which permitted temperatures to fall into 30's or below the morning of the 13th. This was the coldest temperature of the month.

The cold was short lived as mild temperatures returned on the 14th and would last for two weeks. There were two periods of rain during this period: 15th and the 18th-19th. Rainfall amounts on the 15th ranged to upwards of 0.77" at **Rob Cohen's Potomac 4 N** station. Heavy showers moved eastwards during the evening of the 18th and on the 19th. An EF-0 tornado with winds of 80 mph was confirmed 2 miles NW of Jarrettsville, Harford County, Maryland on the 18th at 7:07 PM. It caused tree and minor roofing damage along its 5 minute, 100 yard wide 1.2 mile long path. An EF-1 tornado was reported in Paradise Township across the state line in Pennsylvania less than a hour later.

The last unseasonably warm temperatures occurred on the 24th. Mid 70's to low 80's were reported by many ACON observers.

On the evening of the 29th Sandy moved onshore just south of Atlantic City, NJ as a huge Post Tropical Storm. Post Tropical Storm Sandy, also dubbed Superstorm Sandy, continued northwest and passed between Wilmington, DE and Philadelphia, PA. It then slowed and weakened as it continued generally WNW to western Pennsylvania before it turned northwards into Canada.

The strongest damaging winds occurred north of its path while the heaviest rains fell south of its path. The highest storm surges occurred along the New Jersey Coast, and New York Harbor region. Being on the southern side of the storm, the storm surge damage along the

EXTREMES REPORTED BY

ACON OBSERVERS

MAXIMUM TEMPERATURE

Seaford, DE	87
Rehoboth Beach DE DEOS	86
Baltimore 2 SE	86

MINIMUM TEMPERATURE

Davis 3 SE WV	24
Frostburg	28
Millers 4 NE	28
Smithsburg 1.5 SW	28

WARMEST AVG. TEMP.

Baltimore 2 SE	63.1
Ridge	61.7

COLDEST AVG. TEMP.

Davis 3 SE WV	48.0
Frostburg	50.6
LaVale	53.3

MAXIMUM PRECIPITATION

Rehoboth Beach DE DEOS	12.11
Millers 4 NE	12.09
Owings Mills 2 SE	11.90

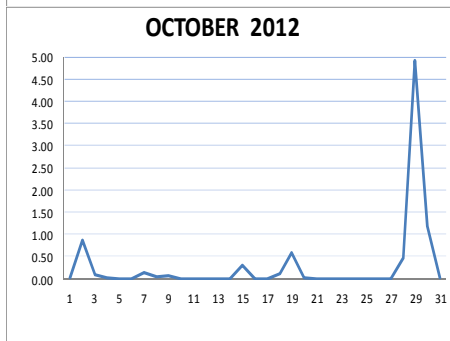
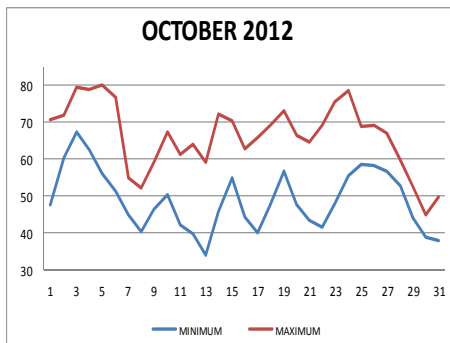
MINIMUM PRECIPITATION

LaVale	4.53
Frostburg	4.89

MAXIMUM SNOWFALL

Davis 3 SE WV	30.6
Frostburg	5.7
LaVale	T
Owings Mills 2 SE	T
Manchester 1 SW	T
Clarksburg 2 ENE	T

CONTINUED ON PAGE 3



ACON MD/DE Network
Daily average temperatures and precipitation based on observation times, not calendar days.

Additional information on how Sandy effected Delaware can be found on the following link from the Delaware State Climatologist:
www.climate.udel.edu/storm-events/hurricane-sandy-impacts-delaware

OBSERVER COMMENTS FOR OCTOBER 2012

Gary Gallaher of Bear 2 SW, DE

Wettest October, 8.36", in 45 years station history. Old record was 7.93" in 2005. October was dry before Post Tropical Storm Sandy.

13th - Heavy frost, 30°.

29th - 5.27" of rain broke the existing October daily rainfall record of 3.63" set 10/19/1966".

29th - All-time record minimum barometric pressure of 28.20" set. Old record was 28.41" set 3/13/1993.

28th-30th - Storm total 6.88".

David Legates of Middletown 6 N

29th - Minimum barometric pressure 28.24".

28th-30th - Storm total 6.05".

Nate Mullins of LaVale

29th - 3.07" of precipitation most for any October day since records began in 1992.

28th-30th - Storm total 3.47". Rains became heavy on the 29th along with some thunder and sleet. Power lost the evening of the 29th and was restored on the 30th. Barometer dropped 29.00" for the first time since 3/13/1993.

Dan Hanson of Pasadena 2 N

28th-30th - Storm total 6.93". Minimum barometric pressure 28.47".

Jeff Stoudt of Laurel 2 E

15th - Rain late morning till early night, very heavy around 1620 hours.

28th-30th - Storm total 6.47". Non-stop rain frequently moderate heavy but never very heavy on the 29th into predawn (30th) with gale winds at times, then persistent light rain / drizzle into late evening of the 30th. Unusual flooding and moderate wind damage occurred in the Laurel area.

Joe Manfre of Baltimore 2SE

3rd - Min temp 71°, Mostly cloudy, warm, AM drizzle & fog.

28th-30th - Storm total 6.48".

Marty Sharrow of Owings Mills

There were 3 distinct heavy rainfall dates, namely on the 2nd, 19th, and at the end of the month with Sandy. Each of these rain events precipitated flooding along the Jones Falls, a stream that begins near my house, and then meanders through Baltimore, emptying into Baltimore Harbor.

28th-30th - Storm total 7.00", Snow T.

Herb Close of Manchester 1 SW

28th-30th - Storm total 6.64", Snow T.

Ralph Hartsock of Westminster 4 SSE

2nd - Very heavy rain, 2.50"

11th - Sunny "For Once".

13th - 1st freeze, heavy frost.

28th-31st - Storm total 6.09".

Bobby Miller of Millers 4 NE

Wettest October (12.19") and the second wettest month in station history.

2nd - AM +RA, local flooding, evening +FG.

28th-31st - Storm total 7.58", Minimum pressure 28.41".

Power was out for 47 hours, 54 minutes

Marty Brumback of Bryans Road 2 ESE

28th-30st - Storm total 7.69".

Eric Glass of Emmitsburg 2 SE

29th-31st - Storm total 4.03".

Ron Berger of Norbeck 1 SE

Second wettest October and fourth wettest month since 1994.

28th-30th - Storm total 6.15".

Rob Cohen of Potomac 4 N

October's rainfall just missed the record for the month at 9.63".

28th-30th - Storm total 6.08".

Rich Giannola of Olney 1 S

27th - Solar halo at 3:30 PM.

28th-30th - Storm total 5.67".

Richard Holden of Clarksburg 2 ENE

2nd - Heavy rain, 2.11".

29th - 5.27" was the greatest daily total in 25 years of records. Barometric pressure of 28.59" was the lowest beating the 28.63" of 3/13/1993.

28th-30th - Storm total 6.36", Snow T.

Stan Rossen of Glenmont 1 NNE

The months precipitation of 9.67" fell short of the record 11.52" set in 2005.

29th - 5.36" broke the old October daily record of 5.35" set 10/7/2005.

28th-30th - Storm precipitation 6.45", Minimum barometric pressure 28.60" (preliminary) which fell short record minimum of the 28.52" set on 3/13/1993. Record October storm rainfall is 9.01" from "Tammy" on 10/6-10/8/2005.

Kevin Shaw of Gaithersburg 2 WNW

This October was full of spectacular events with many records set. Most all of these events and records on the precipitation side. 11.50" made this the wettest October on record. The previous record was 7.91" in 1979.

2nd - 3.07" made this the 4th wettest October day.

8th - Record low max temp 50°.

29th - 5.20" made this the wettest October day and tied 9/30/2011 for the second wettest day at my station.

28th-30th - Storm total 6.39", minimum barometric pressure 28.63".

Joe Terry of Forest Glen

Second wettest October in 18 year station history.

29th - 5.23" of rain was the second highest daily rain in station history.

28th-30th - Storm total 6.56". Minimum barometric pressure 28.62". Power was out for 4½ hours.

Wes Gleason of Hollywood 3 ENE

28th-31st - Storm total 7.05".

OBSERVER COMMENTS CONTINUED
ON PAGE 3

Compiled by Gary Gallaher, MD/DE ACON Data Collector and Report Writer, from data received from dedicated observers. Without your observations each month this report will not be possible.

MD/DE/DE OCTOBER 2012 ACON REPORT

OBSERVER COMMENTS CONTINUED FROM PAGE 2

John Zyla of Ridge

3rd - Clear, much warmer and humid.

28th-30th - Storm total 8.57". Minimum pressure 28.69" lowest in 18 year station history.

Max Hutto of Smithsburg 1.5 SW

3rd & 10th - AM dense fog.

18th - PM thunderstorms with heavy downpours, windy.

28th-31st - Storm total 6.62", Record low barometric pressure 28.63" on the 30th.

Greg Keefe of Hagerstown 1 E

4th wettest October with 8.18". Wettest is 12.36" in 1976.

1st - Very dense fog overnight through mid morning.

Greg Keefe of Hagerstown 1 E (Cont.)

13th - First freeze of season. Temp below freezing for 4½ hours.

30th - Record low barometric pressure of 28.62". Old record was 28.64" on 3/13/1993.

28th-31st - Storm total 6.04". Minor to moderate flooding and minor wind damage reported.

Jim Vaughn of Smithsburg 2 NE

29th - Daily rainfall record of 3.49".

30th - Daily rainfall record of 1.05".

28th-31st - Storm total 4.68". Minimum barometric pressure 28.66", PWG 43 mph. Sandy was kind to my homestead in the hills.

Dave Leshner of Davis 3 SE WV

28th-31st - Storm total 4.54", Snow 29.6". Power out for 117 hours as a result of the storm.

MONTHLY SUMMARY CONTINUED FROM PAGE 1

Maryland and Delaware coast was nothing compared to New Jersey and New York. High pressure to the north forced Sandy to make a turn to the west into the New Jersey coast. Being on the western and southern side of the storm as it moved up the coast winds backed from the NE towards the NW and then to the S. These wind directions along with coastal beach replenishment projects generally did their job protecting our coasts from major damage even though water level rose to record or near record levels. Water levels also rose to record or near record levels in the Delaware Bay / River northwards into southeastern Pennsylvania.

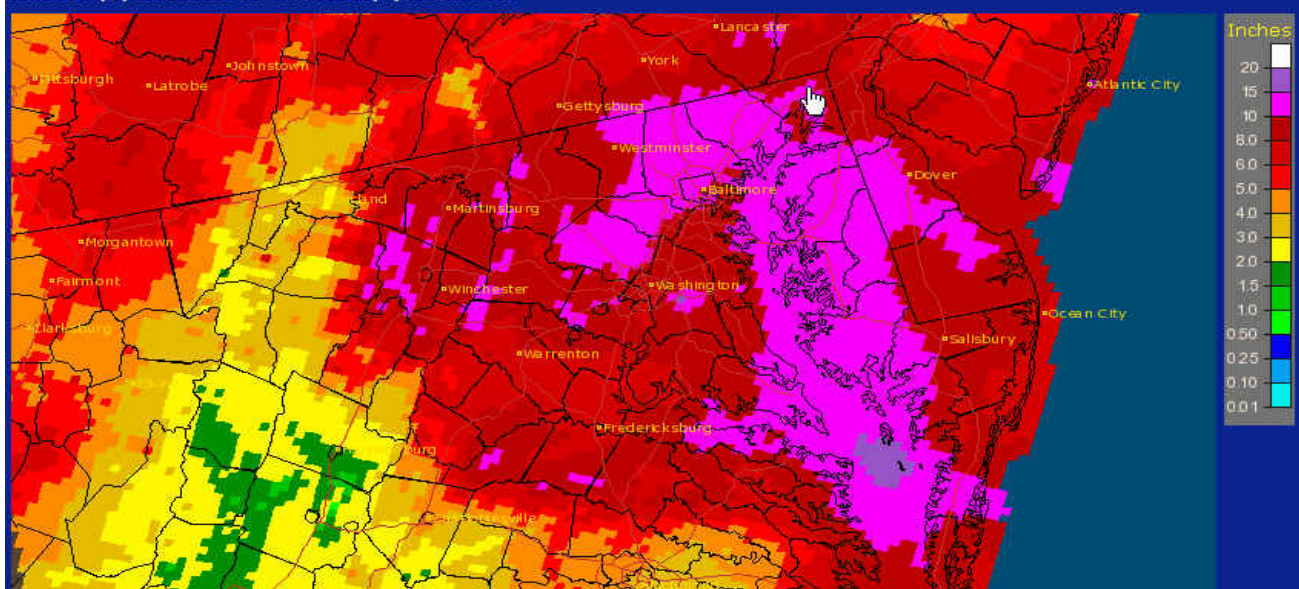
Heavy snow fell in the far Western Maryland and West Virginia mountains when Sandy's moisture

collided with cold air. Snowfall amounts upwards of 2½ feet plus were reported.

Sandy brought very low barometric pressure readings, many at record levels. As Sandy made landfall south of Atlantic City, NJ her pressure was 27.93". Nearby Philadelphia, PA reported a station record low pressure of 28.12". Minimum pressures from other airports and NWS sites were: Atlantic City, NJ 28.00", Wilmington, DE 28.18", Dover AFB, DE 28.26", Georgetown, DE 28.41", Baltimore Inner Harbor, MD 28.44", Baltimore BWI, MD 28.47", Salisbury, MD 28.56", and Washington National 28.62".

Storm precipitation totals along with minimum barometric pressures reported by ACON observers can be found in the Observer Comments section. Peak wind gusts can be found in the Monthly Summary section unless it was exceeded during another event then it is noted in the Observer Comment section.

Maryland: October, 2012 Monthly Observed Precipitation
Valid at 11/1/2012 1200 UTC - Created 11/3/12 21:36 UTC



Sandy Batters the Northeast, Makes History

Sandy, a nearly unprecedented late-season storm with both tropical (figures 1 and 2) and non-tropical origins, moved ashore around 8 pm EDT on October 29, 2012, near Atlantic City, NJ. Hours before landfall, the storm still exhibited a partial eye (figure 3), but while moving ashore Sandy was officially classified as a post-tropical cyclone, with sustained winds near 80 mph and a central pressure of 27.93 inches (946 millibars). That value was on par with the Long Island Express (Hurricane) of September 21, 1938, as the storm with the lowest-ever barometric pressure in the northeastern U.S. During the 1938 storm, a record-low pressure of 27.94 inches (946.2 millibars) was reported at Bellport, NY. The 1938 storm, however, was a full-fledged accelerating hurricane, and produced a wind gust to 186 mph at the Blue Hill Observatory in Milton, MA.

During the afternoon of October 29, hours before landfall, Sandy's sustained winds had reached 90 mph and the pressure had fallen to 940 millibars (27.76 inches). By that time, however, Sandy had already begun to entrain cold air, allowing the storm to exhibit characteristics associated with both tropical and winter storms—as well as a non-tropical lowering of its central pressure. Among Sandy's unusual aspects were the broadening of the wind field, more typical of a nor'easter, and the development of heavy snow in the Appalachians.

So-called snow hurricanes, while exceedingly rare, have been noted in the past. One of the most famous such storms ravaged the Northeast from October 8-11, 1804, with a probable hurricane or post-hurricane landfall occurring in New Jersey—although that storm apparently did not move as far inland as Sandy.

Had Sandy officially made landfall as a hurricane, it would have represented the first such occurrence along the Atlantic Coast north of Florida in late October or beyond since October 31, 1899. On that date, a category 2 hurricane struck near the North Carolina-South Carolina border. Before Hurricane Irene on August 28, 2011, the last time a hurricane officially made landfall on the New Jersey coast was September 16, 1903.

More information on Sandy will appear next week.



Figure 2. Wind swaths, October 22-29, 2012, provided by the National Hurricane Center. Approximate tropical storm- and hurricane-force wind swaths associated with Hurricane Sandy are shown in orange and red, respectively.



Figure 1. GOES East Visible, October 28, 2012, 1:35 pm EDT. Visible satellite imagery clearly shows the eye of Hurricane Sandy while the storm was centered about 270 miles southeast of Cape Hatteras, North Carolina. At the time, maximum sustained winds were near 75 mph.

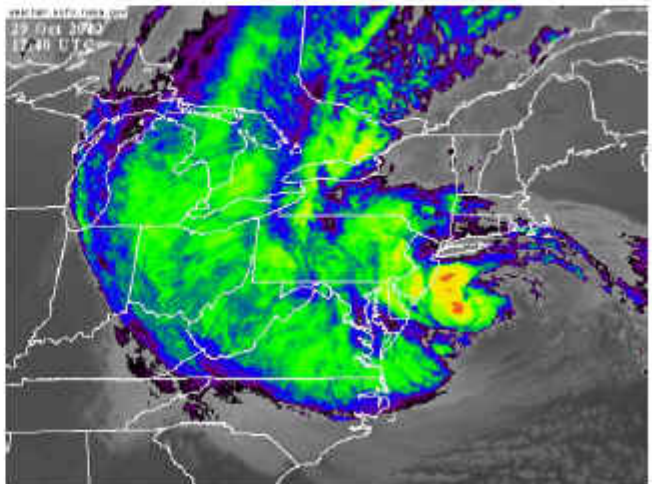
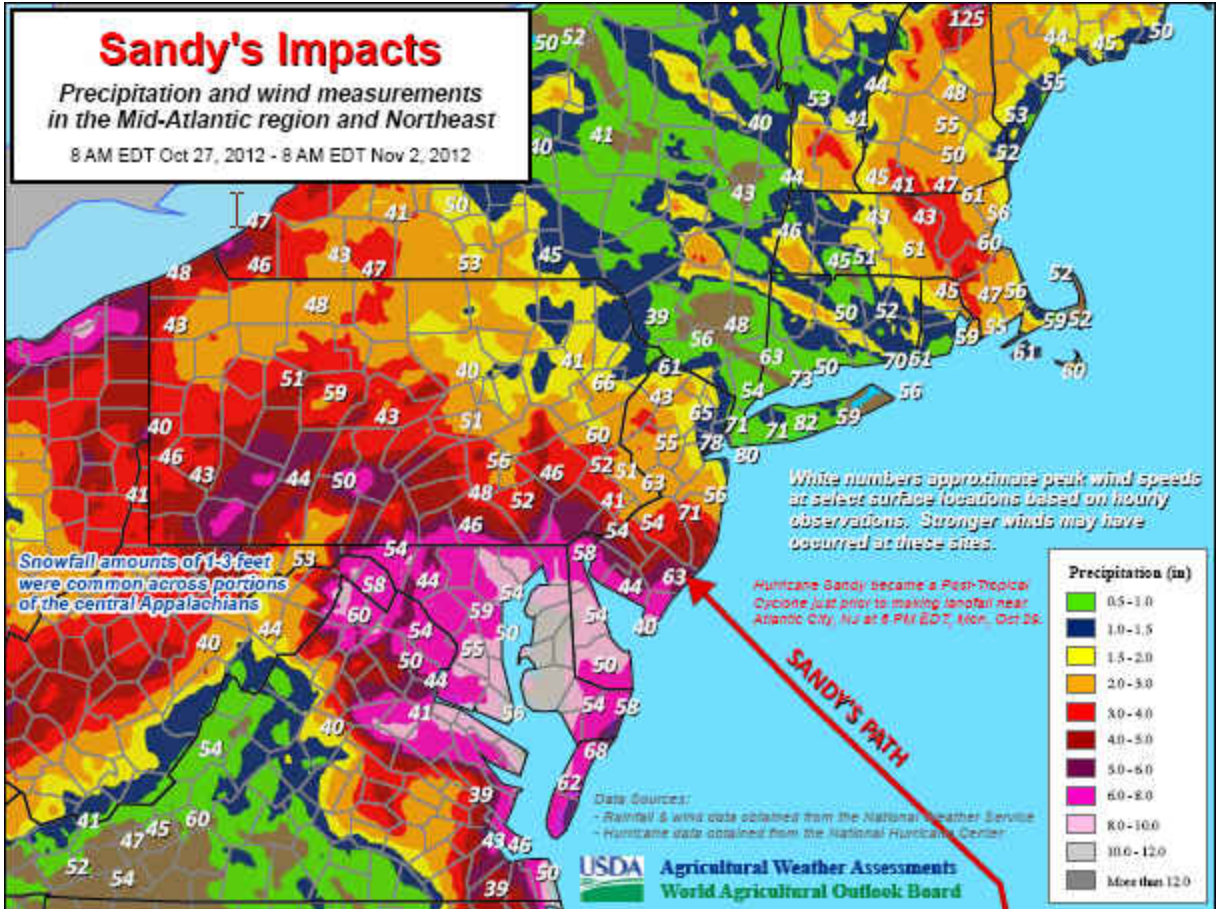


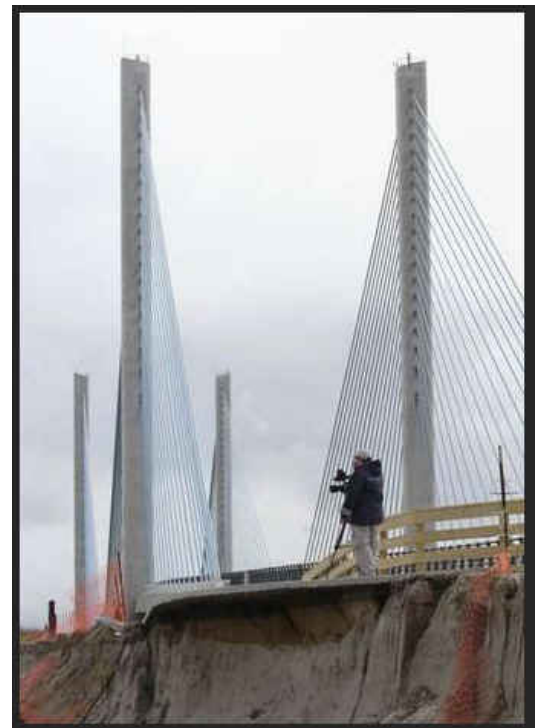
Figure 3. GOES East IR, October 29, 2012, 1:40 pm EDT. Infrared satellite imagery shows what is left of Hurricane Sandy's eyewall (bright colors near the coast) just over 6 hours before the hurricane made landfall near Atlantic City, NJ. At the time, maximum sustained winds were near 90 mph.

MD/DE/DE OCTOBER 2012 ACON REPORT



Sandy precipitation and peak wind gust map. Source: Weekly Weather and Crop Bulletin 11/07/2012

Dunes north of the Indian River Inlet Bridge were severely damaged.



Above: Northern roadway to old Indian River Inlet Bridge which is being dismantled just east of the new bridge which opened spring 2012. Right: East side of the new bridge's northbound roadway just to the west of the above picture. Both pictures © Delawareonline.com

**ACON MD / DE / DC
OCTOBER 2012 SUMMARY**

OBSERVER	STATION COUNTY, STATE	TEMPERATURE									PEAK WIND			PRECIPITATION					SNOWFALL				OBS TIME		
		AVG MAX	AVG MIN	MEAN	MAX	DAY	MIN	DAY	MAX >=90	MAX <=32	MIN <=32	GUST	DIR	DAY	TOTAL	MAX DAY	DATE	YEAR	DAYS >=.01"	DAYS >=1"	TOTAL	MAX DAY		DATE	SEA- SON
<i>New Castle, Delaware</i>																									
Gallagher, Gary	Bear 2 SW	66.3	47.8	57.1	81	5	30	13	0	0	1	44	NW	29	8.36	5.27	29	39.02	12	1	0.0	0.0	0.0	2400	
Legates, David	Middletown 6 N	66.5	48.8	57.7	81	3+	37	13	0	0	0	32		29	7.64	4.44	29	37.98	16	2				2400	
NWS Wilmington	New Castle Co. Apt.	66.5	49.5	58.0	82	5	33	13	0	0	0	58	SSE	29	6.25	3.79	29	31.41	11	1	0.0	0.0	0.0	2400	
UofDE AG FARM DEOS***	Newark	65.6	48.4	57.0	81	5	32	13	0	0	1	29		29	7.71	4.69	29	34.90	14	1				2400	
U of D REC DEOS***	Townsend 4 W	65.8	48.8	57.3	80	3	31	13	0	0	1	40		29	9.21	5.85	29	34.33	13	2				2400	
<i>Sussex, Delaware</i>																									
Lamberton, Roy	Seaford	<u>74.6</u>	<u>51.8</u>	<u>63.2</u>	87	3+	33	13	0	0	0	40		29	8.79	8.10	28-30	<u>31.64</u>	9	1				2400	
NWS Georgetown	Sussex Co. Airport	69.6	51.3	60.5	85	3	34	13	0	0	0	50	WNW	29	9.63	6.60	29	33.00	10	2				2400	
U of D REC DEOS***	Georgetown 5 SW	67.9	49.6	58.8	83	3	30	13	0	0	1	39		29	<u>8.60</u>	6.60	29	<u>31.43</u>	9	1				2400	
U of D REC DEOS***	Harbeson 8 S	68.0	50.0	59.0	85	3	31	13	0	0	1	38		29	10.30	7.09	29	40.12	9	2				2400	
U of D DEOS***	Rehoboth Beach Bwk	67.7	55.0	61.4	86	4	41	31	0	0	0	38		29	12.11	9.16	29	41.36	10	2				2400	
<i>Allegany, Maryland</i>																									
Latta, Greg	Frostburg	60.1	41.1	50.6	75	15	28	13+	0	0	4				4.89	2.61	30	35.97	15	1	5.7	3.6	30	5.7	0700
Mullins, Nate**	LaVale	61.9	44.7	53.3	79	24	29	13	0	0	1				4.53	3.07	29	33.83	11	1	T	T	29	T	2400
<i>Anne Arundel, Maryland</i>																									
Hanson, Dan	Pasadena 2 N	66.6	48.4	57.5	81	3+	37	13	0	0	0	39	WNW	29	8.52	5.83	29	35.30	17	1	0.0	0.0	0.0	2400	
Jug Bay Wetlands	Lothian	68.6	47.1	57.9	84	3	31	13	0	0	1	19		28	9.81	6.75	29	<u>36.24</u>	22	2	0.0	0.0	0.0	2400	
NWS Baltimore	BWI Airport	67.3	49.3	58.3	81	5+	35	13	0	0	0	60	WNW	29	8.92	5.51	29	33.60	11	1	0.0	0.0	0.0	2400	
Stoudt, Jeff	Laurel 2 E	66.1	49.7	57.9	80	5+	34	13	0	0	0				9.03	5.20	29	34.83	12	2	0.0	0.0	0.0	2400	
<i>Baltimore, Maryland</i>																									
Muller, Ray	Reisterstown	Station Closed Till Spring																	<u>28.00</u>					2100	
Sharrow, Marty	Owings Mills 2 SE	64.4	47.1	55.8	80	5	31	13	0	0	1				11.90	5.86	29	42.19	10	4	T	T	30	T	2400
<i>Baltimore City, Maryland</i>																									
Manfre, Joe	Baltimore 2 SE	70.5	55.7	63.1	86	3	41	30	0	0	0				8.63	5.62	29	<u>28.72</u>	10	1	0.0	0.0	0.0	2400	
Maryland Science Ctr	Baltimore Inner Harbor	70.0	55.2	62.6	85	3+	44	30+	0	0	0				9.36	6.08	29	36.11	11	1				2400	
<i>Carroll, Maryland</i>																									
Close Jr, Herb	Manchester 1 SW	63.9	47.3	55.6	80	5	33	13	0	0	0	44		29	9.97	4.92	29	41.56	18	3	T	T	30	T	2300
Hartsock, Ralph	Westminster 4 SSE	66.5	49.3	57.9	82	3	30	13	0	0	1	55		29	9.82	3.34	29	41.50	12	3	0.0	0.0	0.0	1900	
Miller, Bobby	Millers 4 NE	65.1	47.9	56.5	79	24	28	13	0	0	1	56		29	12.09	4.05	29	46.94	16	3	0.0	0.0	0.0	1800	
<i>Charles, Maryland</i>																									
Brumback, Marty	Bryans Road 2 ESE	68.3	49.3	58.8	84	3	33	13	0	0	0	40	W	29	8.64	6.01	29	29.82	15	2	0.0	0.0	0.0	2359	
<i>Frederick, Maryland</i>																									
Glass, Eric	Emmitsburg 2 SE	63.7	44.5	54.1	78	25	29	13+	0	0	2				7.59	3.10	30	40.33	12	2	0.0	0.0	0.0	0700	
<i>Howard, Maryland</i>																									
Giannola, Rich	Laurel JHU / APL	Station Closed 2/1/12																	<u>1.83</u>					2400	

**ACON MD/DE/DC
OCTOBER 2012 SUMMARY**

OBSERVER	STATION COUNTY, STATE	TEMPERATURE									PEAK WIND			PRECIPITATION					SNOWFALL				OBS TIME		
		AVG MAX	AVG MIN	MEAN	MAX	DAY	MIN	DAY	MAX >=90	MAX <=32	MIN <=32	GUST	DIR	DAY	TOTAL	MAX DAY	DATE	YEAR	DAYS >=.01"	DAYS >=1"	TOTAL	MAX DAY		DATE	SEA- SON
<i>Montgomery, Maryland</i>																									
Berger, Ron	Norbeck 1 SE	65.5	48.2	56.9	80	3+	32	13	0	0	1				10.23	4.76	29	38.48	11	4	0.0	0.0	0.0	2200	
Cohen, Rob	Potomac 4 N	65.1	48.5	56.8	80	24	34	13	0	0	0				9.63	4.37	29	38.60	12	3	0.0	0.0	0.0	2100	
Giannola, Rich	Olney 1 S	65.9	48.6	57.3	81	5+	32	13	0	0	1				9.32	5.67	28-30	36.75	10	3	0.0	0.0	0.0	2400	
Holden, Richard	Clarksburg 2 ENE	64.2	48.0	56.1	78	5+	33	13	0	0	0	65	WNW	29	9.69	5.27	29	42.20	14	2	T	T	30	T	2400
McGinnis, Alex	Rockville 2 W																	<u>30.60</u>						2400	
Rossen, Stan	Glenmont 1 NNE				84	24	33	13	0	0	0	18		30	9.67	5.36	29	24.82	13	2	0.0	0.0	0.0	2400	
Scafide, Tony	Bethesda																	<u>22.07</u>						2400	
Shaw, Kevin	Gaithersburg 2 WNW	65.2	48.5	56.9	79	5	34	13	0	0	0	31	NE	29	11.50	5.20	29	39.76	12	3	0.0	0.0	0.0	2400	
Terry, Joe	Forest Glen	68.4	48.5	58.5	84	24	33	13	0	0	0	37	W	29	9.15	5.23	29	35.58	12	3	0.0	0.0	0.0	2400	
<i>Prince Georges, Maryland</i>																									
Smith, Brian	Oxon Hill																	<u>25.52</u>						2300	
<i>St. Marys, Maryland</i>																									
Gleason, Wes	Hollywood 3 ENE	67.6	54.2	60.9	83	3	40	30+	0	0	0				8.53	4.63	30	32.70	13	2	0.0	0.0	0.0	2400/0700	
Zyla, John	Ridge	69.0	54.4	61.7	85	3	41	30	0	0	0	39	SW	29	9.44	5.88	29	42.23	10	2	0.0	0.0	0.0	2400	
<i>Washington, Maryland</i>																									
Hutto, Max	Smithsburg 1.5 SW	63.5	44.8	54.2	77	5+	28	13	0	0	1	38		29	9.34	5.21	29	47.45	14	3	0.0	0.0	0.0	2400	
Keefer, Greg	Hagerstown 1 E	63.5	45.6	54.6	78	5+	29	13	0	0	1	48	NW	29	8.18	4.55	29	42.74	13	2	0.0	0.0	0.0	2400	
Vaughn, Jim	Smithsburg 3 NE	62.7	46.9	54.8	77	4+	35	13+	0	0	0	47	S	13	6.69	3.47	29	40.84	14	2	0.0	0.0	0.0	2400	
<i>Wicomico, Maryland</i>																									
NWS Salisbury	Wicomico Co. Apt	71.2	51.5	61.4	87	3	35	13	0	0	0	55	WNW	29	9.23	5.80	29	39.53	13	2				2400	
<i>Arlington, Virginia</i>																									
NWS Washington Nationa	National Airport	68.9	53.0	61.0	84	24	41	13	0	0	0	61	NW	29	5.82	3.85	29	28.82	10	1	0.0	0.0	0.0	2400	
<i>Loudon, Virginia</i>																									
NWS Washington Dulles	Dulles Airport	66.8	46.7	56.8	81	5+	30	13	0	0	1	54	WNW	29	8.87	4.25	29	31.63	12	3	0.0	0.0	0.0	2400	
Shaffer, Lance	Sterling 4 N																	<u>19.54</u>						2400	
<i>Tucker, West Virginia</i>																									
Leshner, Dave	Davis 3 SE WV	56.9	39.0	48.0	74	3	24	31	0	2	8				6.48	3.15	30	44.67	16	1	30.6	22.9	30	30.6	0700
SECTION AVERAGE*		64.8	47.8	56.3											8.69	37.00			0.2		0.2				

NOTES:

M OR UNDERLINE = MISSING DATA

> = INCLUDED IN NEXT DAYS DATA

ITALIC = ESTIMATED DATA

+ = FIRST OF SEVERAL OCCURANCES

WINTER TYPE PRECIPITATION FROM STATIONS WITH

TIPPING BUCKET RAIN GAUGE MAY SHOW UNDER CATCH.

ALSO AMOUNTS CAUGHT MAY BE NOTED IN THE FOLLOWING

DAYS AS IT MELTS.

*SECTIONAL AVERAGE DOES NOT INCLUDE DATA FROM WEST VIRGINIA.

**OBSERVER FOR LAVALE IS SCOTT LOHR. DATA COMPILED BY NATE MULLINS.

*** DATA FROM DEOS (DELAWARE ENVIROMENTAL OBSERVING SYSTEM) PERMISSION GRANTED FOR USE OF DATA

*** REC= UNIVERSITY OF DELAWARE RESEARCH AND EDUCATION CENTER

National Weather Service station data listed herein is preliminary and may be subject to change. The data has not been certified and cannot be used in legal actions.

Only reports certified by the National Climatic Data Center in Asheville, NC may be used for these purposes.

Accuracy of Data from ACON Observers not guaranteed.

GARY GALLAHER 11/27/12

ACON MD / DE / DC
OCTOBER 2012 DAILY TEMPERATURES

STATION	1	2	3	4	5	6	7	8	9	10	11	12	13	14	15	16	17	18	19	20	21	22	23	24	25	26	27	28	29	30	31	AVG	OBS TIME	
BEAR 2 SW, DE GALLAHER	71	74	80	78	81	77	52	54	59	68	60	63	59	73	69	62	64	68	75	66	66	68	71	76	65	68	66	60	59	51	51	66.3	2400	
MIDDLETOWN 6 N DE LEGATES	72	75	81	78	81	78	52	53	59	68	61	63	60	73	68	62	67	69	74	67	65	69	72	77	65	68	66	60	59	49	53	66.5	2400	
WILMINGTON , DE NWS NEW CASTLE CO APT	47	61	69	62	55	48	44	40	49	54	40	38	37	47	57	42	39	43	60	47	42	41	45	52	60	57	56	53	49	42	41	48.8	EDT	
NEWARK AG FARM, DE U OF DE DEOS	72	71	81	79	82	78	53	54	59	68	61	64	57	74	68	62	63	70	74	67	67	69	69	76	66	68	67	60	61	49	52	66.5	2400	
TOWNSEND 4 W, DE U of D REC DEOS	47	61	67	60	55	49	44	39	48	52	41	37	32	45	57	43	38	42	59	46	45	41	44	52	59	59	53	53	50	41	41	48.4	EDT	
LAMBERTON, ROY SEAFORD	71	78	80	78	79	78	51	52	58	66	59	63	59	73	67	61	64	69	76	65	64	66	76	78	64	70	65	58	55	47	51	65.8	2400	
GEORGETOWN, DE NWS SUSSEX CO APT	48	60	68	61	56	50	44	41	48	54	42	40	31	47	58	41	37	50	62	46	46	41	45	53	59	53	54	52	47	41	41	48.8	EDT	
GEORGETOWN, DE U of D REC DEOS	76	85	87	84	87	86	58	56	62	73	69	74	69	67	78	69	73	77	82	77	73	76	83	87	76	77	68	59	M	M	M	74.6	2400	
GEORGETOWN, DE NWS SUSSEX CO APT	55	63	73	64	58	58	47	50	49	56	43	41	33	45	58	44	40	46	65	50	42	41	46	55	59	56	58	54	M	M	M	51.8	EDT	
GEORGETOWN, DE U of D REC DEOS	73	83	85	83	82	82	56	55	61	68	63	69	63	76	78	65	66	71	78	71	67	69	80	79	67	73	67	61	56	55	55	69.6	2400	
HARBESON 8 S, DE U of D REC DEOS	49	65	74	66	61	57	49	44	53	55	42	41	34	44	59	42	41	44	63	50	44	45	47	59	61	54	58	56	50	43	40	51.3	EST	
GEORGETOWN, DE U of D REC DEOS	72	80	83	82	80	81	56	53	60	67	62	67	62	74	76	63	67	71	76	69	65	68	78	78	68	72	66	59	55	47	54	67.9	2400	
HARBESON 8 S, DE U of D REC DEOS	47	62	72	63	57	56	47	41	51	53	41	40	30	45	58	41	38	45	65	48	41	40	45	55	60	53	59	55	47	42	39	49.6	EDT	
REHOBOTH BEACH BWK U of D DEOS	73	81	85	83	80	82	58	54	60	67	62	66	59	75	77	63	66	69	76	70	65	68	78	76	65	70	66	60	56	47	54	68.0	2400	
REHOBOTH BEACH BWK U of D DEOS	47	62	72	65	59	58	48	43	53	53	40	40	31	42	57	41	37	43	65	48	41	44	44	57	62	58	60	56	47	42	38	50.0	EDT	
FROSTBURG LATTA	69	75	85	86	78	83	62	59	63	69	59	66	58	75	78	63	62	67	75	67	65	70	79	69	65	66	64	62	59	50	54	67.7	2400	
LAVALLE MULLINS**	53	67	73	68	62	61	49	47	55	58	47	47	47	54	57	49	45	54	65	54	47	50	55	61	62	63	61	58	48	43	41	55.0	EDT	
PASADENA 2 N HANSON	63	64	59	71	71	74	59	48	42	58	59	61	49	57	75	59	53	65	64	64	53	56	69	75	74	75	66	57	51	38	33	60.1	0700	
LOTHIAN JUG BAY	38	39	53	58	49	50	37	34	34	37	33	33	28	28	46	42	36	36	41	43	40	40	41	55	52	50	54	47	38	31	30	41.1	EDT	
BALTIMORE NWS BWI APT	65	63	74	78	78	56	52	49	55	63	56	54	57	68	63	57	65	66	66	56	59	73	75	79	77	70	62	55	48	40	39	61.9	2400	
LAUREL 2 E STOUDT	44	55	61	63	50	42	41	37	39	40	40	35	29	44	50	47	37	41	50	47	37	36	51	55	49	54	56	48	36	36	35	44.7	EDT	
PASADENA 2 N HANSON	71	70	81	79	81	80	54	54	60	68	61	66	57	73	67	62	65	69	75	68	66	69	74	77	66	71	67	61	54	46	53	66.6	2400	
LOTHIAN JUG BAY	45	60	69	61	55	47	45	40	48	52	42	39	37	50	53	42	39	51	57	45	42	40	46	54	55	55	57	53	46	40	38	48.4	EDT	
BALTIMORE NWS BWI APT	72	75	84	80	83	82	54	53	61	71	63	67	60	75	70	66	68	72	76	69	68	71	78	83	70	72	68	60	55	45	55	68.6	2400	
LAUREL 2 E STOUDT	48	60	69	59	54	46	44	39	46	50	39	37	31	41	51	41	37	46	56	46	39	37	46	53	59	58	53	53	45	39	37	47.1	EDT	
BALTIMORE NWS BWI APT	72	71	81	80	81	79	53	54	61	69	62	67	58	74	71	63	66	69	76	66	66	71	76	81	67	69	68	61	54	46	53	67.3	2400	
LAUREL 2 E STOUDT	48	63	70	62	59	48	45	41	47	50	43	39	35	45	53	43	41	44	55	48	45	43	48	54	61	60	58	54	46	41	40	49.3	EST	
REISTERSTOWN MULLER	69	69	76	76	80	77	52	52	60	67	63	64	60	75	70	62	67	68	73	65	64	70	78	80	69	68	67	60	53	45	49	66.1	2400	
REISTERSTOWN MULLER	48	62	69	64	57	48	45	41	46	57	45	40	34	45	53	45	41	46	55	48	47	45	50	56	61	58	55	53	45	41	40	49.7	EST	
OWINGS MILLS 2SE SHARROW																																	2100	EDT
OWINGS MILLS 2SE SHARROW	73	67	77	76	80	74	53	50	58	58	60	62	57	72	67	61	65	68	71	65	64	68	74	80	64	66	66	57	51	45	48	64.4	2400	
BALTIMORE 2SE MANFRE	45	58	65	61	54	51	45	37	43	38	39	38	31	44	57	43	38	48	56	46	43	41	48	53	57	58	54	51	42	38	38	47.1	EDT	
BALTIMORE 2SE MANFRE	76	75	86	84	85	82	59	59	63	68	67	70	60	79	74	67	70	74	81	68	67	74	76	82	69	72	72	64	56	49	56	70.5	2400	
BALTIMORE 2SE MANFRE	54	66	71	69	64	55	46	52	54	52	51	44	54	58	53	51	56	65	55	54	52	57	63	64	64	64	61	57	48	41	44	55.7	EDT	
BALTIMORE 2SE MANFRE	76	74	85	83	85	82	59	58	63	72	66	68	61	78	74	66	68	72	78	69	68	73	75	80	69	71	71	64	57	49	56	70.0	2400	
BALTIMORE 2SE MANFRE	54	66	72	69	65	53	50	47	51	55	49	49	45	51	58	53	50	55	61	54	51	52	57	62	64	64	61	57	49	44	44	55.2	EST	
MANCHESTER 1SW CLOSE	72	66	76	75	80	72	52	49	57	65	59	61	56	69	68	59	64	67	72	63	63	67	76	79	65	65	64	57	50	46	47	63.9	2300	
MANCHESTER 1SW CLOSE	46	57	65	59	57	46	42	36	41	45	39	42	33	42	51	44	42	48	55	46	42	41	57	58	56	57	54	49	43	37	37	47.3	EDT	
WESTMINSTER 4 SSE HARTSOCK	71	69	82	81	78	75	60	56	62	68	58	62	65	70	70	62	68	69	73	64	64	65	74	76	66	72	70	62	49	46	53	66.5	1900	
WESTMINSTER 4 SSE HARTSOCK	45	59	65	66	56	59	46	39	45	54	42	40	30	42	59	46	38	48	57	48	43	41	48	56	60	60	55	55	47	41	39	49.3	EDT	
MILLERS 4NE MILLER	70	65	77	76	77	74	57	48	58	65	62	61	57	70	68	61	66	67	73	67	63	68	75	79	73	66	66	61	51	51	46	65.1	1800	
MILLERS 4NE MILLER	45	57	63	65	55	56	44	37	43	51	41	39	28	44	58	47	36	47	56	46	42	42	50	55	55	57	55	51	47	38	36	47.9	EDT	
BRYANS ROAD 2 ESE BRUMBACK	71	77	84	80	82	81	54	53	61	69	62	67	60	75	70	65	68	72	76	69	66	71	80	83	73	70	69	60	53	44	54	68.3	2359	
BRYANS ROAD 2 ESE BRUMBACK	50	63	70	62	55	50	45	42	46	55	46	40	33	48	56	43	40	51	56	46	42	39	49	55	59	60	56	53	44	39	39	49.3	EDT	
EMMITSBURG 2 SE GLASS	67	68	63	76	75	77	69	51	48	59	66	58	60	56	71	65	60	64	68	66	62	63	67	72	78	64	66	66	57	50	42	63.7	0700	
EMMITSBURG 2 SE GLASS	42	42	58	63	53	54	44	36	41	45	40	36	29	29	48	49	36	34	41	47	41	38	38	47	51	57	55	49	40	39	44.5	EDT		

ACON MD / DE / DC
OCTOBER 2012 DAILY TEMPERATURES

STATION	1	2	3	4	5	6	7	8	9	10	11	12	13	14	15	16	17	18	19	20	21	22	23	24	25	26	27	28	29	30	31	AVG	OBS TIME		
LAUREL JHU / APL GIANNOLA																																		2400 EDT	
NORBECK 1 SE BERGER	69	68	80	78	80	75	53	50	59	68	60	62	58	73	67	61	66	68	71	64	63	69	78	80	68	67	67	59	52	44	53	65.5	2200 EDT		
POTOMAC 4N COHEN	70	67	74	73	77	73	54	51	60	68	60	62	58	72	67	62	67	70	68	63	65	69	78	80	69	68	68	59	52	44	50	65.1	2100 EDT		
OLNEY 1 S GIANNOLA	70	68	77	76	81	74	51	50	59	69	61	64	59	74	67	63	68	68	72	65	65	71	79	81	67	67	69	58	52	44	53	65.9	2400 EDT		
CLARKSBURG 2ENE HOLDEN	69	65	77	76	78	74	52	48	59	66	59	61	57	72	65	60	65	67	68	64	63	68	77	78	67	66	66	57	50	43	52	64.2	2400 EST		
ROCKVILLE 2 W McGINNIS																																		2400 EST	
GLENMONT 1NNE ROSSEN			68										33											84						45			2400 EST		
BETHESDA SCAFIDE																																		2400 EDT	
GAITHERSBURG 2WNW SHAW	69	68	76	77	79	74	54	50	60	67	60	61	58	72	67	61	66	68	69	64	68	68	76	78	68	68	68	59	52	45	53	65.2	2400 EDT		
FOREST GLEN TERRY	73	69	81	80	83	79	52	53	61	72	64	67	61	75	72	66	70	73	75	67	67	73	81	84	71	70	70	59	52	45	55	68.4	2400 EDT		
OXON HILL SMITH																																			2300 EDT
HOLLYWOOD 3 ENE GLEASON	68	79	83	78	81	80	59	55	60	68	62	66	60	74	70	64	68	68	75	68	66	69	79	76	69	72	66	60	56	46	52	67.6	2400 EDT		
RIDGE ZYLA	69	83	85	80	82	83	60	53	59	71	62	70	61	76	71	67	69	72	78	71	67	70	77	75	72	72	66	66	55	45	55	69.0	2400 EDT		
SMITHSBURG 1.5 SW HUTTO	68	67	75	76	77	69	52	48	61	67	58	58	56	71	66	59	65	67	66	61	62	68	71	77	69	67	68	59	50	44	47	63.5	2400 EDT		
HAGERSTOWN 1E KEEFER	68	66	75	77	78	68	51	47	61	66	60	57	57	71	67	60	66	66	65	62	62	69	71	78	68	66	66	58	50	44	47	63.5	2400 EDT		
SMITHSBURG 3 NE VAUGHN	67	67	75	77	77	69	50	47	61	65	58	56	55	70	66	59	65	66	66	59	60	67	71	76	67	66	65	58	51	44	45	62.7	2400 EDT		
SALISBURY NWS WICOMICO CO APT	73	85	87	85	84	83	59	56	62	70	64	71	65	77	80	66	69	74	79	73	69	70	79	81	73	77	70	62	58	47	58	71.2	2400 EST		
WASH NATIONAL NWS ASOS	72	72	82	81	83	80	56	55	64	71	63	67	60	76	72	65	69	72	76	69	67	73	78	84	71	71	70	62	55	46	55	68.9	2400 EST		
WASH DULLES NWS ASOS	70	67	81	80	81	77	52	51	62	69	61	64	59	74	70	64	67	71	72	67	65	72	79	81	70	69	69	59	52	43	54	66.8	2400 EST		
STERLING 4 N SHAFFER																																			2400 EDT
DAVIS 3 SE WV LESHER	59	60	74	69	66	66	56	43	35	57	50	57	47	63	71	56	51	66	61	60	44	49	64	68	67	73	69	57	46	32	27	56.9	0700 EDT		

**ACON MD / DE / DC
OCTOBER 2012 DAILY PRECIPITATION**

STATION	1	2	3	4	5	6	7	8	9	10	11	12	13	14	15	16	17	18	19	20	21	22	23	24	25	26	27	28	29	30	31	TOTAL	OBS TIME	
BEAR 2 SW, DE GALLAHER	T	0.09	0.03	0.04	0.01		0.19	0.02	0.08						0.22				0.80									0.93	5.27	0.68		8.36 0.0	2400 EDT	
MIDDLETOWN 6 N DE LEGATES	0.01	0.19	0.03	0.06		0.01	0.18	0.02	0.08						0.17	0.01			0.80	0.02								1.07	4.44	0.54	0.01	7.64 -	2400 EDT	
WILMINGTON, DE NWS NEW CASTLE CO APT	T	0.14	0.01	0.02			0.18	T	0.10						0.15			0.01	0.63				T					0.80	3.79	0.42	T	6.25 0.0	2400 EST	
NEWARK AG FARM, DE U OF DE DEOS	0.01	0.11	0.11	0.03			0.15	0.01	0.07						0.31				0.77	0.01								0.79	4.69	0.64	0.01	7.71 -	2400 EDT	
TOWNSEND 4 W, DE U of D REC DEOS	0.01	0.43	0.02		0.01		0.20	0.01	0.06	0.01					0.12				0.77									1.11	5.85	0.61		9.21 -	2400 EDT	
LAMBERTON, ROY WEST SEAFORD		0.07					0.32	0.02	0.04						0.17	0.01			0.05	0.01								>	>	8.10		8.79 0.0	2400 EDT	
GEORGETOWN, DE NWS SUSSEX CO APT	T	0.37		0.02		T	0.30	0.04	0.03						0.27				0.26									1.39	6.60	0.35		9.63 -	2400 EST	
GEORGETOWN, DE U of D REC DEOS	M	M	M	M	M	M	M	0.04	0.03						0.40	0.01			0.19						0.01			0.97	6.60	0.35		8.60 -	2400 EDT	
HARBESON 8 S, DE U of D REC DEOS		0.42					0.32	0.07	0.06						0.47				0.25									1.41	7.09	0.21		10.30 -	2400 EDT	
REHOBOTH BEACH BWK U of DE DEOS		0.36	0.01				0.21	0.06	0.02						0.67				0.18									1.34	9.16	0.10		12.11 -	2400 EDT	
FROSTBURG LATTA	0.20	0.26	0.33	0.01			T	0.10	0.19		0.05				0.07	0.13			0.27		0.05			T		0.03	T	0.41	2.61	0.18	0.18	4.89 3.6	0700 EDT	
LAVALE MULLINS**	T	0.38	0.03				0.11	0.08		T					0.09			0.32		0.03			0.02					0.12	3.07	0.28		4.53 T	2400 EDT	
PASADENA 2N HANSON	0.01	0.21	0.01	0.01	0.01		0.17	0.01	0.11	0.01					0.44	0.01		0.01	0.57	0.01								0.26	5.83	0.84		8.52 0.0	2400 EDT	
LOTHIAN JUG BAY	0.03	0.33		0.02	0.01	0.01	0.24	0.01	0.15	0.03		0.01		0.01	0.12	0.02	0.01	0.01	0.46	0.01	0.01		0.01					0.31	6.75	1.25		9.81 0.0	2400 EDT	
BWI NWS ASOS	T	0.54	0.01	0.01			0.15	T	0.08	T					0.53			0.01	0.92									0.24	5.51	0.92		8.92 0.0	2400 EST	
LAUREL 2 E STOUDT	T	0.51	0.01	0.02		T	0.16	0.01	0.11	0.02					0.89			T	0.83									0.19	5.20	1.08		9.03 0.0	2400 EST	
REISTERSTOWN MULLER																																		2100 EDT
OWINGS MILLS 2SE SHARROW	T	1.69	0.39	T			0.11	0.01	0.03						0.47				2.20				T		T			0.12	5.86	1.02	T	11.90 T	2400 EDT	
BALTIMORE 2SE MANFRE	T	0.65	0.01	0.01			0.14		0.05						0.35				0.94									0.18	5.62	0.68		8.63 0.0	2400 EDT	
BALT INNER HARBOR MD SCIENCE CENTER		0.73	0.01	0.01			0.13		0.03						0.30			0.01	0.96									0.20	6.08	0.90		9.36 -	2400 EST	
MANCHESTER 1SW CLOSE	0.02	2.04	0.04	0.04			0.06	0.03	0.05	0.03					0.25	0.01		0.07	0.64	0.01			0.03			T	0.10	4.92	1.62	0.01	9.97 T	2300 EDT		
WESTMINSTER 4 SSE HARTSOCK		2.50	0.16	0.04			0.05	0.01	0.04						0.24				0.44	0.25								T	3.34	2.63	0.12	9.82 0.0	1900 EDT	
MILLERS 4NE MILLER	0.03	2.53	0.05	0.02			0.04	0.06	0.02	0.05					0.27				0.50	0.88			0.06	T	T			0.02	4.05	3.36	0.15	12.09 0.0	1800 EDT	
BRYANS ROAD 2 ESE BRUMBACK	0.01	0.08	0.01				0.17	0.01	0.19	0.03					0.21			0.04	0.17						0.02			0.22	6.01	1.46	0.01	8.64 0.0	2359 EDT	
EMMITSBURG 2 SE GLASS	0.13	0.23	0.97	0.03			T	0.06	0.05	T	0.23								1.75						0.11		T		0.44	3.10	0.49		7.59 0.0	0700 EDT

ACON MD / DE / DC
OCTOBER 2012 DAILY PRECIPITATION

STATION	1	2	3	4	5	6	7	8	9	10	11	12	13	14	15	16	17	18	19	20	21	22	23	24	25	26	27	28	29	30	31	TOTAL	OBS TIME	
LAUREL JHU / APL GIANNOLA																																		2400 EDT
NORBECK 1 SE BERGER	T	1.87	0.06	0.01			0.11	0.01	0.11						0.52			T	1.39										0.18	4.76	1.21	T	10.23 0.0	2200 EDT
POTOMAC 4N COHEN		1.73	0.06	T			0.11	0.02		0.10					0.77			0.08	0.67					0.01				0.07	4.37	1.64	T	9.63 0.0	2100 EDT	
OLNEY 1 S GIANNOLA	0.01	1.77	0.03	0.01			0.11	0.01	0.08						0.52			>	1.11									>	>	5.67	T	9.32 0.0	2400 EDT	
CLARKSBURG 2ENE HOLDEN	0.02	2.11	0.04	0.01			0.09	0.01	0.02	0.02					0.46			0.47	0.08					T				0.16	5.27	0.93 T	T	9.69 T	2400 EST	
ROCKVILLE 2 W McGINNIS																																		2400 EST
GLENMONT 1NNE ROSSEN	0.01	1.48	0.06	0.01			0.13	0.01	0.07	T					0.36			0.11	0.98									0.16	5.36	0.93		9.67 0.0	2400 EST	
BETHESDA SCAFIDE																																		2400 EDT
GAITHERSBURG 2WNW SHAW	0.01	3.07	0.21	T			0.13	0.01	0.01						0.75			0.58	0.34					T				0.14	5.20	1.05		11.50 0.0	2400 EDT	
FOREST GLEN TERRY	0.01	0.99	0.01	0.01			0.12	0.01	0.09						0.15			T	1.20										0.13	5.23	1.20		9.15 0.0	2400 EDT
OXON HILL SMITH																																		2300 EDT
HOLLYWOOD 3 ENE GLEASON		0.05	0.61		0.01		0.01	0.20	0.04	0.02	T					0.29		T	0.25										0.02	2.23	4.63	0.17	8.53 0.0	0700 EDT
RIDGE ZYLA	T	0.08					0.28	0.07	0.11	0.05					0.11			T	0.17										2.20	5.88	0.49		9.44 0.0	2400 EDT
SMITHSBURG 1.5 SW HUTTO	0.01	0.66	0.01	0.03			0.06	0.14							0.22			1.12	0.36					0.11				0.14	5.21	1.21	0.06	9.34 0.0	2400 EDT	
HAGERSTOWN 1E KEEFER	0.01	0.66	T	0.03		T		0.07	0.14						0.15			0.69	0.26									0.29	4.55	1.17	0.03	8.18 0.0	2400 EDT	
SMITHSBURG 3 NE VAUGHN	0.03	0.48	0.02	0.04			0.04	0.17							0.18			0.83	0.13					0.09				0.11	3.47	1.05	0.05	6.69 0.0	2400 EDT	
SALISBURY NWS WICOMICO CO APT	T	0.21				0.03	0.47	0.07	0.02						0.65			0.01	0.21								0.02	1.23	5.80	0.50	0.01	9.23 -	2400 EST	
WASH NATIONAL NWS ASOS	T	0.43	T	0.01			0.11	0.04	0.09	T					0.06			T	0.24									T	0.15	3.85	0.84	T	5.82 0.0	2400 EST
WASH DULLES NWS ASOS	0.01	2.35	T	0.01			0.08	0.05	0.03	T					0.26			0.40	0.03								T	0.40	4.25	1.00	T	8.87 0.0	2400 EST	
STERLING 4 N SHAFFER																																		2400 EDT
DAVIS 3 SE WV LESHER	0.02	0.30	0.16			0.01	0.06	0.05	0.39 1.0		0.04				0.11	0.28			0.47		0.05							0.17	0.43 T	3.15 22.9	0.79 6.7	6.48 30.6	0700 EDT	

EVAPORTRANSPIRATION (PER MANUAL INSTRUMENT, NOT COMPUTER GENERATED)

BRYANS ROAD 2 ESE BRUMBACK	0.02	0.10	0.10	0.17	0.08	0.10	0.15	0.08	0.12	0.05	0.15	0.20	0.20	0.20	0.04	0.15	0.16	0.17	0.13	0.25	0.25	0.10	0.20	0.15	0.10	0.30	0.10	0.40	0.30	0.20	0.15	4.87	0700 EDT
-------------------------------	------	------	------	------	------	------	------	------	------	------	------	------	------	------	------	------	------	------	------	------	------	------	------	------	------	------	------	------	------	------	------	------	-------------