



<http://www.jhuapl.edu/weather/education/ACONdata.html>

ATLANTIC COAST OBSERVER NETWORK, MD / DE / DC CHAPTER WITH DATA FROM NEARBY AREAS

WARM, WET, CLOUDY MONTH TORNADIC THUNDERSTORMS

April was an active weather month. For a good part of the month fronts generally laid in an east-west direction across the region. When the front moved northwards warm southerly winds brought summer-like temperatures in the 80's and when it moved southwards cool damp winds with an easterly component brought cool maximum temperatures in the 40's and 50's. Clouds were abundant.

Temperatures averaged well above normal mainly due to quite warm minimums. **Gary Gallaher** of **Bear 2 SW DE** and **Kevin Shaw** of **Gaithersburg 2 WNW** both reported average minimums 1.5° warmer than their previous records.

Precipitation also averaged above normal across the region except for the Delmarva Peninsula where below normal amounts fell. The heaviest rains fell from Central Maryland westwards. Thunder was reported on around seven days. A few of these storms brought small hail. It was also a windy month. Wind gusts of 40 MPH or higher were reported at over half of the stations which report wind data.

There were numerous reports of severe weather - hail, strong winds, and tornadoes. More than a dozen tornadoes occurred on four days (4th, 16th, 27th, & 28th) in Maryland and none in Delaware. Most of the tornadoes occurred on the 27th and 28th in conjunction with the tornado outbreak which hit the southeast. **Wes Gleason** of **Hollywood 3 ENE** reported that a weak tornado / funnel cloud passed over his home on the 27th. For more details see page 3.

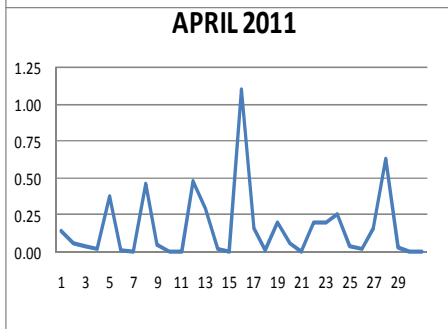
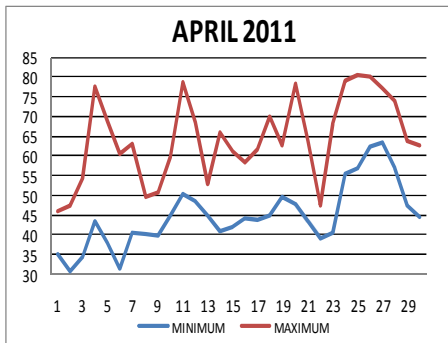
The month began cool with maximum temperatures remaining in the 40's. The coldest temperature occurred on either the 1st, 2nd, or 6th when temperatures fell to around freezing. Snow and sleet fell on the 1st and 2nd. **Herb Close** of **Manchester 1 SW** reported 3.2" of snow and **Bobby Miller** of **Millers 4 NE** 2.0" on the 1st. **Dave Leshner** of **Davis 3 SE WV** reported 19.7" of snow from the 1st to the 3rd.

The first warmth occurred on the 4th when 80's were common.

Heavy rains along with some thunderstorms occurred on the 16th. 1"+ amounts were common with the heaviest amounts falling in Washington County and the lightest amounts on the Delmarva Peninsula. **Jim Vaughn** of **Smithsburg 3 NE** reported 2.64", **Max Hutto** of **Smithsburg 1.5 SW** 1.85" and **Greg Keefer** of **Hagerstown 1 E** 1.83".

80° maximum temperatures occurred from the 24th to the 27th. Minimums on the 26th and 27th only fell to the mid to upper 60's setting records for the warmest minimum temperatures for April. **Stan Rossen** of **Glenmont 1 NNE** re-

Continued on Page 3



ACON MD/DE Network
Daily average temperatures and precipitation based on observation times, not calendar days.

EXTREMES REPORTED BY ACON OBSERVERS

MAXIMUM TEMPERATURE

Forest Glen	90
Jug Bay Wetlands	89
Baltimore 2 SE	89
Glenmont 1 NNE	89
Oxon Hill	89

MINIMUM TEMPERATURE

Davis 3 SE WV	23
Mont. Village 1 SW	27
Frostburg	28

WARMEST AVG. TEMP.

Baltimore 2 SE	61.3
Oxon Hill	59.9
Ridge	59.9

COLDEST AVG. TEMP.

Davis 3 SE WV	47.1
Frostburg	49.7
Manchester 1 SW	54.2

MAXIMUM PRECIPITATION

Davis 3 SE WV	10.99
Smithsburg 1.5 SW	9.64
Smithsburg 3 NE	9.38

MINIMUM PRECIPITATION

Harbeson DEOS 8 S DE	1.62
Rehoboth Beach DEOS DE	2.06
Georgetown DEOS 5 SW DE	2.67

MAXIMUM SNOWFALL

Davis 3 SE WV	23.3
Manchester 1 SW	3.2
Millers 4 NE	2.0

WEATHER PARTY

SATURDAY, JULY 30, 2011
HOME OF HERB CLOSE
MANCHESTER 1 SW
More information to follow.

OBSERVER COMMENTS FOR APRIL 2011

Gary Gallaher of Bear 2 SW, DE

Cloudy month, only 2 clear days. First April without a freezing temperature in 45 years of records. Average minimum temperature 1.5° warmer than the previous record set in 1994. Seven days with max temps in the 80's broke the old record of 5 days set in 1994, tied 2010.

27th - 68° tied max minimum temp for the month set 1977.

Greg Latta of Frostburg

Seven days with thunder. 2nd wettest April. Record is 9.28" set in 1964.

Nate Mullins of LaVale

Wet and mild. Temps 2.5° above normal almost entirely to well above normal overnight lows, and only a handful of sub-freezing lows, which is very unusual.

22nd - Record low max high only 48°. Some snowflakes fell on some nearby ridges.

26th - A line of severe thunderstorms to the west and north prompted a tornado warning but weakened as it approached.

28th - A fast moving line of severe storms passed through around 1 AM prompted a tornado warning.

Jeff Stoudt of Laurel 2 E

April was highlighted by frequent showers, some with thunder, but no really heavy rain resulting in a near normal rainfall. The warmth came in four brief spikes and reached summery levels on three of them.

5th - Gusty TSRA toward dawn (0.19").

16th - Periods of rain after daybreak.

Marty Sharrow of Owings Mills

April 2011 started off more like late winter with max/min temperatures running well below normal. The cold air did not stick around very long and temperatures warmed to near summertime values on the 4th. Overall, temperatures for the month were about 2° above normal. There was a spell of summer-like heat and humidity during the last week. Precipitation for the month was quite plentiful, namely some 1 ¾" above normal.

Joe Manfre of Baltimore 2SE

Seven days with thunder.

16th - Very windy, heavy rain.

Ralph Hartsock of Westminster 4 SSE

Daily PWG => 40MPH on the 5th (43 mph WNW), 16th (42 mph ESE) & 17th (40 mph WSW).

5th - Rain and thunderstorms early. Flakes mixed in at noon.

16th - Rain, thunderstorms, flooding, tornadoes, lots of damage.

28th - Tornado warnings all night and AM hours, flooding.

Bobby Miller of Millers 4 NE

Second wettest April in 29 years of records. Only 1983 was wetter with 8.18". Winds gusted to over 50 mph on the 4th (58 mph), 16th & 17th (each 52 mph), and 20th (51 mph). A lot of carry over temperatures. Usually April has the biggest difference in 6 PM vs. midnight data.

Bobby Miller of Millers 4 NE (Cont.)

4th & 5th - First time with two consecutive days with a range of 40+ degrees.

28th - AM storms, heavy rain local flooding.

Ray Muller of Reisterstown

Average temperature using the Bruce Watson method (9 PM temperatures averaged) 57.1°. Hourly maximum temperature 84° on the 4th (first occurrence) and, hourly minimum temperature 33° on the 1st & 2nd.

Eric Glass of Emmitsburg 2 SE

1st - Light drizzle, calm and cold at obs time.

19th - Dew on grass, slight breeze at obs time.

Rich Giannola of JHU/APL

Barometric pressure extremes: 30.43" 22nd, 29.25" 5th.

Winds gusted over 40 mph on 4th (42) 5th (40 mph) 16th (46 mph).

Ron Berger of Norbeck 1 SE

2nd - Small hail ⅛" diameter (rice size) 12:21-12:22 PM.

Rob Cohen of Potomac 4 N

4th - Record maximum temperature. Occasional thunder 9:30 - 12 PM.

11th - Record Maximum temperature.

28th - Morning minimum temperature 72°.

Rich Giannola of Olney 1 S

5th - Morning SHRA with TSRA at 4:50 AM. 0.28" fell by 6:20 AM. SHRA in morning and early afternoon with 0.06" more before clearing and turning cooler in the afternoon.

Richard Holden of Clarksburg 2 ENE

Winds gusted to 40+ mph on the 5th (46 mph), 16th (41 mph), 28th (48 mph).

3rd - Hail.

22nd - Moderate rain, light sleet.

Stan Rossen of Glenmont 1 NNE

I busted my April record for highest minimum temperature of 65° (4/30/83, 4/9/91, & 4/18/02) by 3° on 4/26 and then broke that by 1° the next day.

Kevin Shaw of Gaithersburg 2 WNW

Third wettest April surpassed only by 1983 (7.50") and 2008 (6.64"). My average minimum temperature of 47.4° set an all-time warmest average minimum for April breaking the old record of 45.9° set back in 2008.

22nd - Record low maximum temperature of 48°.

25th—27th - Record maximum minimum temp each day.

27th - 69° set all-time record maximum minimum temperature for April.

Joe Terry of Forest Glen

Warmest average minimum temperature and second warmest April in 16 years of station records.

Continued on Page 3

Compiled by Gary Gallaher, MD/DE ACON Data Collector and Report Writer, from data received from dedicated observers. Without your observations each month this report will not be possible.

APRIL 2011 MD / DE / DC ACON

OBSERVER COMMENTS CONTINUED FROM PAGE 2

Joe Terry of Forest Glen (Continued)

2nd - Two afternoon showers each with 12 degree temperature drops. The second was accompanied by 0.1" to 0.2" diameter hail from 1433 to 1436.

3rd - 0.2" diameter hail around 2140.

Brian Smith of Oxon Hill

2nd - ¼" hail 1458 to 1500.

5th - Brief strong TSRA around 0430.

16th - TSRA 1602-1800 not severe. Gale force SE winds brought down a ~6" diameter dead branch in neighbor's yard.

27th - +TSRA 1900-2000; tornadic thunderstorms just south, then just north of the area. GR (hail) B1931E1933, ½" diameter.

Wes Gleason of Hollywood 3 ENE

28th - The tornadoes in St Mary's and Calvert county went right over the house. Lucky they were not on the ground. It blew the top of my chimney cap off and downed a neighbors tree. It was amazing watching it happen. I did not see a funnel, but heard the high winds on the roof and looked at the wind gage to see less than 20 MPH but 30 to 50 feet off the ground they were moving pretty good. I looked out at the creek and it didn't seem windy. Then the power went out which was the neighbors tree falling on the power lines. Didn't realize there was a tornado until I saw the National Weather service post the Calvert storm a few days later. I had already sent in a weather report for SKYWARN about the wind and damage.

John Zyla of Ridge

22nd - Cloudy, cool, drizzle all day, most rain 6:30-9:00 PM.

28th - Thunderstorm 12:45-1:05 PM & 7:00-9:00 PM.

Max Hutto of Smithsburg 1.5 SW

16th - Rain throughout the day, heavy at times. Creek flooding, cool, very windy.

24th - Easter Sunday mostly sunny, warm, breezy.

28th - Overnight severe thunderstorms, heavy rain, pea size hail, extremely windy (46 mph)

Greg Keefer of Hagerstown 1 E

Four days with peak wind gusts =>40 mph: 16th (40 mph SE), 17th (51 mph W), 20th (50 mph SW), & 28th (51 mph SW).

Wettest April on record with 8.07" breaking the old record of 7.80" set in 1952.

3rd - Thunderstorms 8 PM to midnight with frequent lightning and thunder with some very close strikes and also some marble size hail which fell around 10:30 PM. Most storms passed N & NE of the city only 0.07" of rain fell here.

4th - Record high of 82°. The old record of 81° was set in 1956.

28th - Series of strong thunderstorms overnight between 2

AM and 7 AM with very heavy downpours, frequent lightning, and strong winds gusting up to 51 mph. 2.42" of rain fell in a very short time. Flash flooding reported on roads and in creeks and rivers. Wind gusts caused down trees and some power outages in the area.

Jim Vaughn of Smithsburg 3 NE

Wettest April with 9.38". Old record was 8.37" in 1952.

Winds gusted over 40 mph on 11 days with four of them over 50 mph: 16th (53 mph), 17th & 27th (each 56 mph), and 28th (61 mph).

Record low daily maximum temperatures set on the 1st, 22nd, & 29th.

25th & 26th - Record high daily minimum temperature.

Lance Shaffer of Sterling 4 N VA

Not many days without precipitation. Nice cool finish to the month.

27th - 70° at obs time.

Dave Leshner of Davis 3 SE WV

5th - 14 inch snow depth on the 3rd melted down to a Trace.

17th - Last day with snow on the ground (1") this month.

MONTHLY REPORT CONTINUED FROM PAGE 1

ported that he broke the old record of 65° on the 26th and on the 27th that broke the new record set the day earlier.

Severe storms associated with the storm system which brought a deadly tornado outbreak to the Southeast occurred on the 27th and 28th. Nearly a dozen tornadoes were reported in Maryland from southeast of Washington DC to west of Baltimore and in Western Maryland. Most of the storms were classified EF-0 but a couple of EF-1's were reported. Heavy rains fell in Carroll and Washington Counties Maryland resulted in some flooding. Over 2 inches were reported by the following ACON observers:

Mac Hutto of Smithsburg 1.5 SW 3.28"

Jim Vaughn of Smithsburg 3 NE 2.89"

Herb Close of Manchester 1 SW 2.44"

Greg Keefer of Hagerstown 1 E 2.42"

Bobby Miller of Millers 4 NE 2.38"

The month ended on a seasonal note with maximum temperatures generally in the 60's and minimums in the 40's.

April 5th

1 ENE Norwood, Charles County 38.65, -76.89 EF-0

A weak EF-0 tornado with peak winds of 65 MPH briefly causes some damage in North Waldorf before dissipating. Damage included a large pine tree pushed into a house roof.

2 SE Crofton, Prince Georges / Anne Arundel Counties 38.97, -76.72 EF-0

Brief weak tornado produced minor tree damage near the communities of Sherwood Manor and Patuxent Preserve.

April 16th

2 NNE New Market, Frederick County 39.41, -77.26 EF-1

Max winds 90-100 mph, numerous trees uprooted. Barns partially destroyed, Roof Damage to Residence.

3 NE New Market, Frederick County 39.41, -77.24 EF-1

Small barn destroyed. Roofs partially off of warehouses, numerous tree damage.

3 SE Unionville, Frederick County 39.44, -77.15 EF-0

Trees snapped and shingles removed from residence. Tornado ended in Carroll County.

1 SW Deep Run, Carroll County 39.68, -77.00 EF-0

Numerous trees uprooted and snapped. Tree into house. Two barns partially unroofed.

April 27th

1SE Friendly, Prince Georges County EF-0

A brief tornado occurred at Potomac Airfield. Six general aviation aircraft suffered minor to major damage.

Andrews AFB & Camp Springs 38.81, -76.90 EF-0

Numerous trees uprooted and snapped in a wooded area just SW of the intersection of Auth Road and Allentown Road onto Andrews AFB

April 28th

2 N Town Creek, Allegany County 39.55, -78.54 EF-0

Numerous trees uprooted along the hillside. A large tree three feet in diameter partially fell on a residence.

3 NW Green Ridge, Allegany County 39.60, -78.48 EF-0

Numerous trees were uprooted and / or topped in a small area of Mertens Road. Tree canopies showed evidence of convergent flow near the damage track.

N of Poolesville, Montgomery County 39.15, -77.42 EF-0

Spotty tree damage observed along the track on Beallsville Road, Elgin Road, and Jerusalem Road.

Westminster, Carroll County 39.57, -76.99 EF-0

Tracked from near Old Westminster Pike across Ralph and Center Street before lifting as it crossed Route 97. Uprooted and snapped several trees and downed large branches.

2 E Hampstead, Baltimore County 39.61, -76.83 EF-0

Tracked from near the Carroll County line along Mt Carmel Road for 1.1 miles. Snapped and uprooted several trees and downed large branches. The storm tracked across Marshall Mill Road.

2 WNW Hereford, Baltimore County 39.60, -76.71 EF-0

Touched down briefly just north of Evna Road in a heavily wooded area. Damage was limited to trees.

Breton Bay, St Marys County 38.26, -76.67 EF-1

The tornado tracked across Breton Bay. It snapped and uprooted numerous large trees and caused some home roofing and siding damage. The tornado passed over Camp Calvert

Lusby, Calvert County 38.37, -76.47 EF-0

Tracked briefly from near the intersection of Hilltop Road and Coster Road to the intersection of Solomons Island Road and Sweetwater Road. Six instances of damage noted along path including approximately a dozen trees uprooted.

Source of information: Sterling NWS Web Site & NOAA Severe Weather Prediction Web Site
Not all tornadoes may be listed. Detailed information can be found on the Sterling Web site for all except the tornadoes of the 16th.

**ACON MD / DE / DC
APRIL 2011 SUMMARY**

OBSERVER	STATION COUNTY, STATE	TEMPERATURE									PEAK WIND			PRECIPITATION					SNOWFALL				OBS TIME		
		AVG MAX	AVG MIN	MEAN	MAX	DAY	MIN	DAY	MAX >=90	MAX <=32	MIN <=32	GUST	DIR	DAY	TOTAL	MAX DAY	DATE	YEAR	DAYS >=.01"	DAYS >=1"	TOTAL	MAX DAY		DATE	SEA- SON
<i>New Castle, Delaware</i>																									
Gallaher, Gary	Bear 2 SW	66.3	46.9	56.6	84	25	34	2	0	0	0	44	ESE	16	4.37	1.59	16	14.72	14	1	0.0	0.0		27.0	2400
Legates, David	Middletown 6 N	66.6	46.8	56.7	84	24+	32	2	0	0	1	31		12	4.54	1.55	16	13.36	17	1					2400
NWS Wilmington	New Castle Co. Apt.	65.5	46.4	56.0	82	24+	34	2	0	0	0	54	SE	16	4.71	1.65	16	14.88	14	1	0.0	0.0		27.0	2400
UofD AG FARM DEOS***	Newark	65.2	46.6	55.9	83	25	34	1+	0	0	0	34		16	4.74	1.51	16	10.17	14	1					2400
U of D REC DEOS***	Townsend 4 W	65.9	46.9	56.4	84	25	35	1+	0	0	0	34		5	4.59	1.45	16	13.40	17	1					2400
<i>Sussex, Delaware</i>																									
NWS Georgetown	Sussex Co. Airport	68.3	48.1	58.2	85	24+	33	6	0	0	0	53	SSE	16	2.62	0.95	16	11.45	12	0					2400
U of D REC DEOS***	Georgetown 5 SW	67.6	47.4	57.5	84	24+	31	6	0	0	1	35		28	2.67	1.11	16	11.37	11	1					2400
U of D REC DEOS***	Harbeson 8 S	66.8	47.2	57.0	85	24+	32	6	0	0	1	31		16	1.62	0.32	28	10.82	13	0					2400
U of D DEOS***	Rehoboth Beach Bwk	64.9	48.2	56.6	86	20	37	1+	0	0	0	42		16	2.06	0.94	16	10.82	13	0					2400
<i>Allegany, Maryland</i>																									
Latta, Greg	Frostburg	59.8	39.6	49.7	84	26	28	2+	0	1	5				8.04	1.35	17	19.86	21	2	0.6	0.3	2+	50.1	0700
Mullins, Nate**	LaVale	64.2	44.3	54.3	84	27	31	6	0	0	1				6.07	1.19	16	16.46	14	2	T	T	1+	26.2	2400
<i>Anne Arundel, Maryland</i>																									
Hanson, Dan	Pasadena 2 N	68.3	47.0	57.7	88	20	32	6	0	0	1	36	S	16	3.46	0.93	16	13.20	18	0	0.0	0.0		12.3	2400
Jug Bay Wetlands	Lothian	70.5	47.0	58.8	89	24	30	2	0	0	2				5.58	1.31	24	16.57	16	2	0.0	0.0		6.8	2400
NWS Baltimore	BWI Airport	68.1	47.3	57.7	86	4+	32	2	0	0	1	54	SE	16	3.52	1.29	16	13.86	14	1	0.0	0.0		14.4	2400
Stoudt, Jeff	Laurel 2 E	68.3	48.1	58.2	86	20+	34	2+	0	0	0				3.41	0.86	16	12.96	14	0	0.0	0.0		13.7	2400
<i>Baltimore, Maryland</i>																									
Muller, Ray	Reisterstown														5.12	1.08	16	16.69	18	1	0.1	0.1	1	5.3	2100
Sharrow, Marty	Owings Mills 2 SE	65.9	45.2	55.6	87	11	31	2+	0	0	4	42	SE	16	4.78	1.42	16	17.36	13	1	T	T	1	28.1	2400
<i>Baltimore City, Maryland</i>																									
Manfre, Joe	Baltimore 2 SE	70.4	52.1	61.3	89	20	39	1+	0	0	0				4.20	1.24	16	13.64	14	1	0.0	0.0		13.9	2400
Maryland Science Ctr	Baltimore Inner Harbor	70.2	52.0	61.1	88	11+	39	1	0	0	0				4.15	1.24	16	14.05	13	1					2400
<i>Carroll, Maryland</i>																									
Close Jr, Herb	Manchester 1 SW	64.3	44.1	54.2	84	25	30	1	0	0	4				7.36	2.18	28	17.93	12	2	3.2	3.2	1	35.7	2300
Hartsock, Ralph	Westminster 4 SSE	67.6	46.8	57.2	86	25+	30	6	0	0	3	43	WNW	5	6.82	1.57	28	17.76	17	1	0.8	0.8	1	28.6	1800
Miller, Bobby	Millers 4 NE	67.4	44.7	56.1	83	11+	31	3	0	0	3	58	WSW	4	7.78	2.38	28	19.86	16	2	2.0	2.0	1	35.5	1800
<i>Charles, Maryland</i>																									
Brumback, Marty	Bryans Road 2 ESE																	4.97						10.7	2400
<i>Frederick, Maryland</i>																									
Glass, Eric	Emmitsburg 2 SE	64.1	44.4	54.3	85	26	31	7	0	0	3				6.94	2.37	17	18.74	16	1	0.0	0.0		24.0	0700

**ACON MD / DE / DC
APRIL 2011 SUMMARY**

OBSERVER	STATION COUNTY, STATE	TEMPERATURE									PEAK WIND			PRECIPITATION					SNOWFALL				OBS TIME		
		AVG MAX	AVG MIN	MEAN	MAX	DAY	MIN	DAY	MAX >=90	MAX <=32	MIN <=32	GUST	DIR	DAY	TOTAL	MAX DAY	DATE	YEAR	DAYS >=.01"	DAYS >=1"	TOTAL	MAX DAY		DATE	SEA- SON
<i>Howard, Maryland</i>																									
Giannola, Rich	Laurel JHU / APL	67.1	47.5	57.3	86	25	34	1	0	0	0	46	SE	16	3.92	1.02	16	13.72	14	1	T	T	1	18.7	2400
<i>Montgomery, Maryland</i>																									
Berger, Ron	Norbeck 1 SE	68.2	47.6	57.9	85	4	32	6	0	0	1				4.34	1.24	16	14.26	16	1	0.0	0.0		15.0	2200
Cohen, Rob	Potomac 4 N	69.0	47.9	58.5	86	25	30	2	0	0	2				5.23	1.53	16	15.89	17	1	0.0	0.0		13.8	2100
Giannola, Rich	Olney 1 S	67.8	46.7	57.3	85	25	31	2	0	0	2				4.32	1.04	16	14.13	13	1	T	T	22	17.2	2400
Holden, Richard	Clarksburg 2 ENE	65.9	46.4	56.2	84	25	33	1+	0	0	0	48	SE	28	6.68	1.24	16	17.25	16	1	0.1	0.1	1	27.4	2400
Roth, David	Montgomery Village 1SW	69.7	45.3	57.5	88	25	27	2	0	0	3				4.41	1.02	16	12.02	13	1	T	T	2	1.9	2400
Rossen, Stan	Glenmont 1 NNE	69.3	47.2	58.3	89	25	32	2+	0	0	2	30	S	16	4.11	1.12	16	13.99	14	1	T	T	1	13.5	2400
Scafide, Tony	Bethesda	68.6	48.3	58.5	86	4+	34	2+	0	0	0	20		3+	3.66	1.00	16	12.42	17	1					2400
Shaw, Kevin	Gaithersburg 2 WNW	68.4	47.4	57.9	86	25	32	2	0	0	1	28	NE	10	5.79	1.26	16	15.66	15	1	T	T	1	18.0	2400
Terry, Joe	Forest Glen	70.6	47.8	59.2	90	25	32	2	1	0	1	36	WSW	4	4.48	1.18	16	15.10	15	1	0.0	0.0		15.5	2400
<i>Prince Georges, Maryland</i>																									
Smith, Brian	Oxon Hill	70.7	49.1	59.9	89	25	34	2	0	0	0				5.68	1.39	27	15.79	15	1	0.0	0.0		14.3	2300
<i>St. Marys, Maryland</i>																									
Gleason, Wes	Hollywood 3 ENE	<u>72.2</u>	<u>51.2</u>	<u>61.7</u>	85	24+	35	1	0	0	0				3.55	1.16	17	11.73	16	1	0.0	0.0		5.9	0700/2400
Zyla, John	Ridge	69.4	50.3	59.9	88	25	37	6	0	0	0	41		16	3.72	1.03	12	11.26	13	1	0.0	0.0		13.9	2400
<i>Washington, Maryland</i>																									
Hutto, Max	Smithsburg 1.5 SW	66.5	45.4	56.0	87	25	32	2	0	0	1	46		28	9.64	3.28	28	19.47	15	3	T	T	1+	26.5	2400
Keefer, Greg	Hagerstown 1 E	66.0	45.5	55.8	85	11	31	2	0	0	2	51	W+	17+	8.07	2.42	28	17.27	14	2	T	T	1	23.4	2400
Vaughn, Jim	Smithsburg 3 NE	64.1	44.7	54.4	83	25	32	1	0	0	1	61	W	28	9.38	2.89	28	19.66	12	3	T	T	22	28.7	2400
<i>Wicomico, Maryland</i>																									
NWS Salisbury	Wicomico Co. Apt	69.8	48.5	59.2	85	24+	30	6	0	0	2	54	SW	5	1.70	0.47	16	9.95	11	0					2400
<i>Arlington, Virginia</i>																									
NWS Washington National	National Airport	68.6	49.0	58.8	86	20	36	2+	0	0	0	58	SE	16	3.20	0.74	24	11.97	14	0	0.0	0.0		10.1	2400
<i>Loudon, Virginia</i>																									
NWS Washington Dulles	Dulles Airport	68.7	45.9	57.3	86	25	30	6	0	0	4	43	W	16	5.21	1.33	27	14.36	13	2	0.0	0.0		12.6	2400
Shaffer, Lance	Sterling 4 N	67.7	48.6	58.2	85	25+	33	2	0	0	0				5.06	1.17	12	14.89	13	1	0.0	0.0		13.3	2400
<i>Tucker, West Virginia</i>																									
Leshner, Dave	Davis 3 SE WV	56.9	37.3	47.1	80	26	23	1+	0	4	13				10.99	1.68	20	28.02	19	5	23.3	10.8	3	214.3	0700
SECTION AVERAGE*		67.5	47.1	57.3											4.91		15.19				0.2			19.3	

NOTES:

*SECTIONAL AVERAGE DOES NOT INCLUDE DATA FROM WEST VIRGINIA.

**OBSERVER FOR LAVALLE IS SCOTT LOHR. DATA COMPILED BY NATE MULLINS.

*** DATA FROM DEOS (DELAWARE ENVIROMENTAL OBSERVING SYSTEM) PERMISSION GRANTED FOR USE OF DATA

*** REC= UNIVERSITY OF DELAWARE RESEARCH AND EDUCATION CENTER

M OR UNDERLINE= MISSING DATA

> = INCLUDED IN NEXT DAYS DATA

ITALIC = ESTIMATED DATA

+ = FIRST OF SEVERAL OCCURANCES

WINTER TYPE PRECIPITATION FROM STATIONS WITH

TIPPING BUCKET RAIN GAUGE MAY SHOW UNDER CATCH.

ALSO AMOUNTS CAUGHT MAY BE NOTED IN THE FOLLOWING

DAYS AS IT MELTS.

National Weather Service station data listed herein is preliminary and may be subject to change. The data has not been certified and cannot be used in legal actions.
Only reports certified by the National Climatic Data Center in Asheville, NC may be used for these purposes.
Accuracy of Data from ACON Observers not guaranteed.

GARY GALLAHER 1/27/12 Rev 2

**ACON MD / DE / DC
APRIL 2011 DAILY TEMPERATURES**

STATION	1	2	3	4	5	6	7	8	9	10	11	12	13	14	15	16	17	18	19	20	21	22	23	24	25	26	27	28	29	30	AVG	OBS TIME
LAUREL JHU / APL GIANNOLA	46	49	55	84	71	63	65	48	50	63	84	72	54	70	62	61	65	75	67	84	66	47	72	84	86	83	80	78	64	65	67.1	2400 EDT
NORBECK 1 SE BERGER	46	49	57	85	80	64	68	55	50	62	84	76	54	68	66	61	65	75	68	83	72	49	71	83	84	84	81	76	65	66	68.2	2200 EDT
POTOMAC 4N COHEN	48	50	58	85	77	65	70	54	49	63	85	76	55	69	67	61	67	75	70	84	70	52	73	83	86	86	81	78	65	67	69.0	2100 EDT
OLNEY 1 S GIANNOLA	47	>	57	83	71	63	68	50	50	63	84	70	53	70	66	60	65	74	62	83	65	47	72	83	85	84	80	78	65	67	67.8	2400 EDT
CLARKSBURG 2ENE HOLDEN	47	50	55	82	69	62	63	48	49	61	82	68	53	67	66	60	65	74	63	82	60	47	72	82	84	83	80	75	63	65	65.9	2400 EST
MONTGOMERY VILLAGE ROTH 1SW	50	53	61	84	72	65	70	54	53	66	86	72	56	70	69	61	68	76	66	86	66	49	75	86	88	87	84	78	70	69	69.7	2400 EDT
GLENMONT 1NNE ROSSEN	50	52	58	87	70	66	70	50	51	64	87	69	55	71	68	62	68	77	66	86	65	48	76	87	89	88	83	80	69	68	69.3	2400 EST
BETHESDA SCAFIDE	47	51	58	86	78	65	69	54	50	64	86	73	55	70	66	62	67	76	67	85	67	49	73	83	85	83	81	78	67	66	68.6	2400 EDT
GAITHERSBURG 2WNW SHAW	47	52	57	85	70	65	69	53	50	64	85	70	55	72	67	61	69	76	66	86	66	48	75	83	86	85	81	75	65	67	68.4	2400 EDT
FOREST GLEN TERRY	52	55	59	87	71	67	74	51	51	65	87	71	56	74	69	62	68	78	69	88	67	49	76	88	90	87	84	81	71	71	70.6	2400 EDT
OXON HILL SMITH	51	53	61	87	75	66	73	52	51	66	87	74	60	72	68	64	70	78	71	85	68	52	74	88	89	85	84	78	70	68	70.7	2300 EDT
HOLLYWOOD GLEASON	M	53	59	83	74	M	M	M	M	61	81	75	59	68	65	64	66	M	77	84	71	75	75	85	85	83	76	78	69	68	72.2	2400 EDT
RIDGE ZYLA	51	56	60	85	70	65	65	55	54	62	80	73	59	69	67	62	68	76	73	85	71	52	77	87	88	83	77	79	73	64	69.4	2400 EDT
SMITHSBURG 1.5 SW HUTTO	48	50	57	82	67	61	65	49	50	66	85	68	54	73	68	59	64	72	59	80	60	45	74	82	87	84	82	75	60	68	66.5	2400 EDT
HAGERSTOWN 1E KEEFER	47	50	56	82	67	62	64	50	49	64	85	68	54	70	66	60	64	71	58	81	61	45	72	81	85	84	81	76	61	65	66.0	2400 EDT
SMITHSBURG 3 NE VAUGHN	45	48	53	80	69	60	63	49	48	64	81	68	52	68	63	62	57	71	60	78	57	47	69	78	83	81	80	74	51	64	64.1	2400 EDT
SALISBURY NWS WICOMICO CO APT	48	54	57	80	69	59	70	56	59	68	78	76	63	70	67	66	64	78	75	85	70	51	75	85	85	83	82	83	73	64	69.8	2400 EST
WASH NATIONAL NWS ASOS	50	52	60	85	72	64	69	51	51	63	84	72	59	71	65	63	67	74	68	86	65	50	70	85	83	83	80	77	70	68	68.6	2400 EST
WASH DULLES NWS ASOS	50	51	59	85	71	64	70	51	50	66	85	70	57	70	67	63	69	76	68	86	64	49	73	85	86	84	82	78	66	66	68.7	2400 EST
STERLING 4 N SHAFFER	49	51	58	84	71	65	68	51	51	64	83	70	56	70	67	62	67	76	64	82	63	49	72	84	85	85	81	75	64	65	67.7	2400 EDT
DAVIS 3 SE WV LESHER	32	29	31	56	73	32	54	62	49	64	76	76	49	38	62	61	50	50	66	64	63	52	53	69	68	80	74	73	55	45	56.9	0700 EDT

ACON MD / DE / DC
APRIL 2011 DAILY PRECIPITATION

STATION	1	2	3	4	5	6	7	8	9	10	11	12	13	14	15	16	17	18	19	20	21	22	23	24	25	26	27	28	29	30	TOTAL	OBS TIME		
BEAR 2 SW, DE GALLAHER	0.22	T	0.01	0.00	0.22	0.00	0.00	0.92	0.00	0.00	0.00	0.46	0.09	0.00	0.00	1.59	0.02	0.00	0.15	0.00	0.00	0.08	0.39	0.08	0.03	0.00	T	0.11	T	0.00	4.37 0.0	2400 EDT		
MIDDLETOWN 6 N LEGATES	0.23		0.01	0.34				0.77	0.01			0.48	0.07			1.55	0.02		0.12	0.01	0.07	0.29	0.09	0.03		0.23	0.22				4.54	2400 EDT		
WILMINGTON , DE NWS NEW CASTLE CO APT	0.20		0.03	0.23				0.78			T	0.54	0.11	T		1.65	T		0.14			0.05	0.44	0.10	0.01	0.32	0.11	T			4.71 0.0	2400 EST		
NEWARK AG FARM, DE U OF DE DEOS	0.20		0.01	0.17				0.79				0.69	0.12			1.51	0.03		0.17			0.08	0.45	0.15	0.03	0.34					4.74	2400 EDT		
TOWNSEND 4 W, DE U of D REC DEOS	0.19	0.01	0.01		0.29			0.68	0.02			0.50	0.03			1.45	0.01		0.08			0.08	0.19	0.45	0.04	0.14	0.42				4.59	2400 EDT		
GEORGETOWN, DE NWS SUSSEX CO APT	0.03	0.01	0.11		0.40			0.29	0.01			0.15	0.01			0.95	T					0.10	0.06	T		T	0.50				2.62	2400 EST		
GEORGETOWN, DE U of D REC DEOS	0.02		0.12	0.39				0.23	0.01			0.16				1.11	0.01					0.09	0.07				0.46				2.67	2400 EDT		
HARBESON 8 S, DE U of D REC DEOS	0.09	0.02	0.12		0.19			0.26	0.03			0.12	0.03			0.30	0.01					0.07	0.06				0.32				1.62	2400 EDT		
REHOBOTH BEACH BWK U of D DEOS	0.13		0.03	0.01	0.14			0.25	0.01			0.09	0.02			0.94	0.01					0.03	0.06				0.34				2.06	2400 EDT		
FROSTBURG LATTA	T T	0.01 0.3	0.17 0.3	0.01	0.42	0.03 T		0.11	0.68	0.02		0.21	0.57	0.09		0.10	1.35	0.15		1.25			0.69	0.33	0.17		0.82	0.85		0.01		8.04 0.6	0700 EDT	
LAVALE MULLINS**	> T	0.20 T	0.03	0.19	0.07			0.59	T		>	0.95	T			1.19	0.05	T	1.14			0.19	0.54	0.04		0.41	T	0.48	T			6.07 T	2400 EDT	
PASADENA 2 N HANSON	0.14	0.07	0.05	0.01	0.38			0.33	0.02			0.25	0.17			0.93			0.06			0.21	0.14	0.39	0.01	0.11	0.18	0.01				3.46 0.0	2400 EDT	
LOTHIAN JUG BAY	0.15	0.35	0.01		0.48			0.39				0.13	0.14			1.21	0.01		0.03			0.37	0.22	1.31	0.29		0.48	0.01				5.58 0.0	2400 EDT	
BALTIMORE NWS BWI APT	0.14	0.04	0.01	T	0.25			0.35				0.34	0.16			1.29			0.07			0.21	0.08	0.52	0.02		T	0.04				3.52 0.0	2400 EST	
LAUREL 2 E STOUDT	0.19	0.05	0.03	T	0.33			0.41			T	0.39	0.26			0.86			0.06			0.35	0.08	0.29	0.02		T	0.09				3.41 0.0	2400 EST	
REISTERSTOWN MULLER	0.25 0.1	0.04	0.05	0.02	0.66		T	0.53	0.13			0.91	0.22			1.08	0.12		0.39	0.01			0.07	0.14	0.07		0.08	0.35				5.12 0.1	2100 EDT	
OWINGS MILLS 2SE SHARROW	0.19 T	T	0.03		0.55			0.47	T			0.39	0.21			1.42			0.31			0.15	0.15	0.11			0.25	0.55				4.78 T	2400 EDT	
BALTIMORE 2SE MANFRE	0.14	0.03	0.10		0.24			0.45				0.31	0.15			1.24			0.18			0.20	0.21	0.79	0.02		T	0.14				4.20 0.0	2400 EDT	
BALT INNER HARBOR MD SCIENCE CENTER	0.14	0.03	0.10		0.25			0.44				0.31	0.15			1.24			0.18			0.17	0.21	0.81			0.12					4.15 0.0	2400 EST	
MANCHESTER 1SW CLOSE	0.27 3.2		0.04		0.41			0.58				0.82	0.50			1.48	T		0.50			0.14 T	0.18	T			0.26	2.18				7.36 3.2	2300 EDT	
WESTMINSTER 4 SSE HARTSOCK	0.32 0.8	0.03		0.04	0.65 T			0.52	0.02			0.85	0.50			0.60	0.67		0.40	0.15		0.08	0.16	0.21	0.05			1.57				6.82 0.8	1800 EDT	
MILLERS 4NE MILLER	0.35 2.0	0.01 T		0.02	0.51			0.44	0.16	T		0.78	0.31			1.02	0.81	T	0.34	0.12		0.07	0.16	0.30	T		T	2.38				7.78 2.0	1800 EDT	
BRYANS ROAD 2 ESE BRUMBACK																																		2400 EDT
EMMITSBURG 2 SE GLASS	0.27	0.06		0.02	0.25	0.07		0.10	0.48			0.07	0.63	0.05			2.37						0.29	0.43			0.55	0.55				6.94 0.0	0700 EDT	

**ACON MD / DE / DC
APRIL 2011 DAILY PRECIPITATION**

STATION	1	2	3	4	5	6	7	8	9	10	11	12	13	14	15	16	17	18	19	20	21	22	23	24	25	26	27	28	29	30	TOTAL	OBS TIME	
LAUREL JHU / APL GIANNOLA	0.13 T	0.07		0.01	0.54			0.35				0.35	0.24			1.02			0.08			0.27	0.09	0.47	0.09		T	0.21			3.92 T	2400 EDT	
NORBECK 1 SE BERGER	0.13	0.11	0.02		0.29			0.52				0.39	0.65			1.24	0.01		0.07			0.34	0.11	0.16	0.15		0.04	0.11			4.34 0.0	2200 EDT	
POTOMAC 4N COHEN	0.15	0.13	T	0.03	0.35			0.36	0.03			0.50	0.69			1.53	0.05		0.06			0.46	0.15	0.13	0.10		0.26	0.25			5.23 0.0	2100 EDT	
OLNEY 1 S GIANNOLA	0.11	0.04	0.03		0.34			0.52				0.44	0.66			1.04		0.12				> T	0.48	0.10	0.04		>	0.40			4.32 T	2400 EDT	
CLARKSBURG 2ENE HOLDEN	0.19 0.1	0.02 T	0.08		0.73			0.48				0.87	0.68			1.24	0.01	T	0.35			0.31 T	0.21	0.64	0.01		0.31	0.55			6.68 0.1	2400 EST	
MONTGOMERY VILLAGE ROTH 1SW	0.27	0.04 T	0.03					0.52			T	0.55	0.67			1.02			0.14			0.36	0.14	0.15			0.20	0.32			4.41 T	2400 EDT	
GLENMONT 1NNE ROSSEN	0.09 T	0.19	0.01	T	0.46			0.44	T			0.35	0.57			1.12			0.04			0.42	0.05	0.18			0.01	0.18			4.11 T	2400 EST	
BETHESDA SCAFIDE	0.12	0.08	0.02		0.36			0.40	0.01			0.34	0.63			1.00	0.01		0.01			0.33	0.07	0.13	0.04		0.02	0.09			3.66	2400 EDT	
GAITHERSBURG 2WNW SHAW	0.17	0.06	0.01	T	0.59			0.50	T			0.77	0.64			1.26			0.13			0.33	0.11	0.28	0.05		0.49	0.40			5.79 T	2400 EDT	
FOREST GLEN TERRY	0.15	0.13	0.01		0.55			0.50				0.31	0.53			1.18	T		0.05			0.37	0.09	0.27	0.01		0.01	0.32			4.48 0.0	2400 EDT	
OXON HILL SMITH	0.09	0.13			0.59			0.44	0.01			0.10	0.32			0.85			0.03			0.31	0.17	0.86	0.05		1.39	0.34			5.68 0.0	2300 EDT	
HOLLYWOOD GLEASON	0.11		0.07	T	0.04	0.14	0.01		0.43		0.01	0.01	0.20	0.03			1.16						0.28	0.02				0.51	0.52	0.01		3.55 0.0	0700 EDT
RIDGE ZYLA	0.06	0.03	0.02		0.49			0.64				1.03	0.06			0.75						0.10	0.06			0.01	0.07	0.40				3.72 0.0	2400 EDT
SMITHSBURG 1.5 SW HUTTO	0.09 T	0.03 T	0.16	0.10	0.54			0.65				0.89	0.33			1.85			1.12	0.01		0.15	0.37			0.07		3.28				9.64 T	2400 EDT
HAGERSTOWN 1E KEEFER	0.07 T	0.04	0.06	0.06	0.42			0.49				0.78	0.39			1.83	T		0.92			0.14	0.44	T		0.01		2.42	T			8.07 T	2400 EDT
SMITHSBURG 3 NE VAUGHN			0.02	0.07	0.55			0.54			T	0.69	0.31			2.64	0.02		1.07			0.17 T	0.41					2.89				9.38 T	2400 EDT
SALISBURY NWS WICOMICO CO APT	0.01	0.12	0.03	0.01	0.11			0.25	T			0.10	T			0.47	T					0.11	0.05				T	0.44				1.70 0.0	2400 EST
WASH NATIONAL NWS ASOS	0.08	0.04	T		0.42			0.35	0.01		T	0.19	0.31			0.60			0.01			0.36	0.05	0.74	T		0.01	0.03				3.20 0.0	2400 EST
WASH DULLES NWS ASOS	0.07	0.02	T		0.31			0.42	T		T	0.69	0.30			1.24			0.02			0.40	0.08	0.01			1.33	0.32				5.21 0.0	2400 EST
STERLING 4 N SHAFFER	0.12	0.06		T	0.43			0.51	0.01			1.17		0.51		0.51			0.13			0.46	0.18	0.02			>	0.95				5.06 0.0	2400 EDT
DAVIS 3 SE WV LESHER	0.14 2.6	0.55 6.3	0.92 10.8	T T	1.03 T	0.35 2.9		T	0.51			0.43	0.79	0.06		0.03	1.16 0.7	0.02	T	1.68		T	0.57	1.01	0.20		0.17	1.35	T	0.02		10.99 23.3	0700 EDT